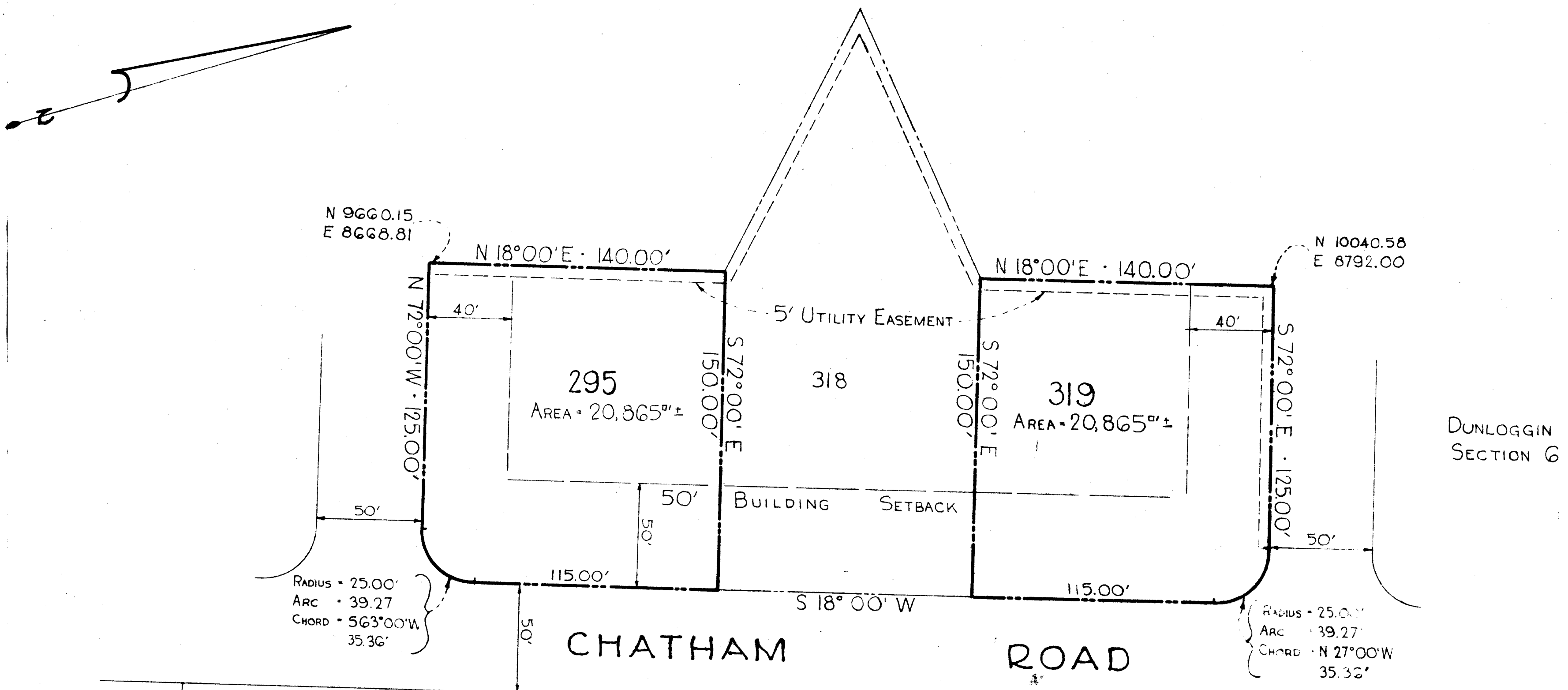


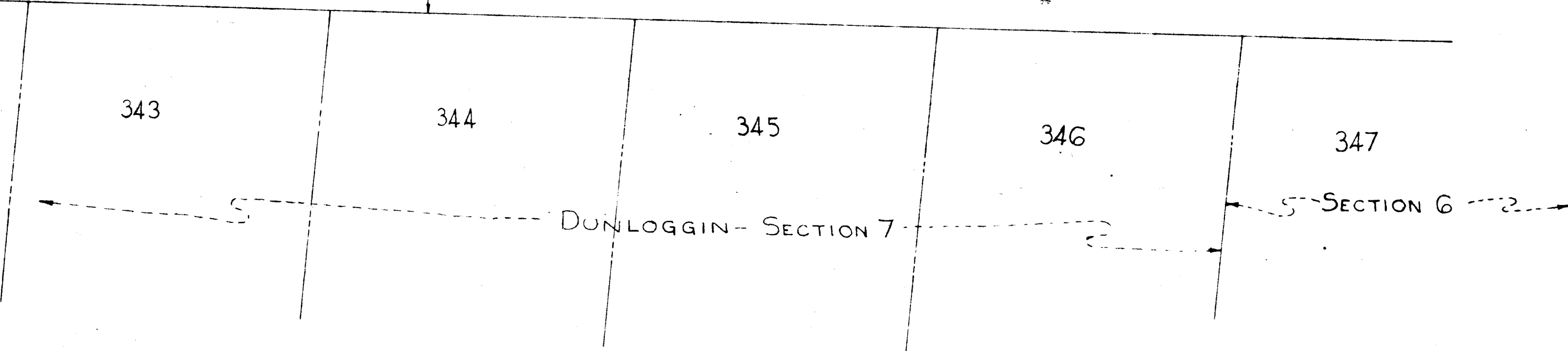
ORIGIN OF COORDINATES SHOWN
HEREON IS ASSUMED:

NOTE:
THE REVISION TO THIS PLAT
CHANGES THE SIDE STREET BUILDING
SETBACK LINE TO 40' MINIMUM.



DUNLOGGIN
SECTION 6

RECORDED PLAT BOOK 9 FOLIO 55
ON Nov. 19 1963 AMONG THE LAND RECORDS OF
HOWARD COUNTY, MD.



REVISED PLAT OF
LOTS 295 & 319
PART OF

DUNLOGGIN

SECTION 7

(AS RECORDED IN PLAT BOOK 3 AT FOLIO 3)
SECOND ELECTION DISTRICT
HOWARD COUNTY, MARYLAND

SCALE: 1" = 40'

OCTOBER 1963

APPROVED: HOWARD COUNTY PLANNING COMM.
William D. Hanna 11-6-63
CHAIRMAN DATE
James J. Harris Jr. 11-7-63
DIRECTOR DATE
APPROVED: HOWARD COUNTY HIGHWAYS DEPT.
Herman S. Hill 11-7-63
ROADS ENGINEER DATE
APPROVED: HOWARD COUNTY METROPOLITAN CODES
W. W. Hanger 11-7-63
ENGINEER DATE

OWNER'S CERTIFICATE:
I, Markus A. Wakefield Jr., President of M.A. Wakefield Jr. Inc., a body corporate, owner of the property shown and described hereon, adopt this plan of subdivision and reserve the fee simple title to the beds of the streets and/or roads shown hereon and in consideration of the plat by the Planning Commission of Howard County, I President of M.A. Wakefield Inc. or assigns do hereby give and grant unto the Board of County Commissioners of Howard County the right and option to acquire for the consideration of One Dollar the fee simple title to the beds of the streets and/or roads shown hereon within the period of five years from the date of the recording of this plat among the Land Records of Howard County, Maryland.
Witness my hand and seal this 5th day of Nov. 1963 *M. A. Wakefield Jr.*

ENGINEER'S CERTIFICATE:
I, Curt A. H. Jeschke, hereby certify that the plan shown hereon is correct, that it, a subdivision of a part of the land which by deed dated December 29, 1956 and recorded among the Land Records of Howard County in Liber 292 at folio 240, was granted and conveyed by Markus A. Wakefield Jr. and E. Virginia Wakefield his wife, to Markus A. Wakefield Jr. Inc. and that concrete monuments marked thus ■ are in place as shown.
I further certify that the requirements of Section 72 B, Article 17 of the Annotated Code of Maryland (as amended) as far as they relate to the making of this plat have been complied with.
Curt A. H. Jeschke

PURDUM & JESCHKE
ENGINEERS
24 PAUM AVENUE
ELLSWORTH CITY, MARYLAND

