

ENGINEER'S CERTIFICATE

I hereby certify that I have carefully surveyed this property and that the subdivision plan shown hereon is correct; that it is a subdivision of the lands conveyed by Henry M. Witt and Helen L. Witt, his wife, to Howard County Development Corporation by deed dated April 1, 1958 and recorded in Liber 312 of Folio 259 and also by Henry M. Witt and Helen L. Witt, his wife, to Howard County Development Corporation by deed dated August 21, 1953 and recorded in Liber 248 of Folio 267 all among the Land Records of Howard County, Maryland, and that all monuments shown thus and iron pipes shown thus actually exist, and that their location, size and material are correctly shown in accordance with Section 72-B of Article 17 of the Annotated Code of Maryland, 1947 Supplement. The total area included in this plan of subdivision is 25.36 Acres.

March 4, 1963

A. James O'Mara
A. JAMES O'MARA
Registered Engineer & Land
Surveyor - Md. No. 2066

OWNERS' DEDICATION

We Howard County Development Corporation, a Maryland Corporation, by Henry M. Witt, President, and Helen L. Witt, Secretary, owners of the property shown and described hereon, adopt this plan of subdivision and reserve the fee simple title to the beds of the streets and roads shown hereon, and in consideration of the approval of this plan by the Planning Commission of Howard County, we do further give and grant to the Board of County Commissioners of Howard County the right and option to acquire for the consideration of One Dollar, the fee simple title to the beds of the streets and roads shown hereon, within the period of five years from the date of recording of this plan among the Land Records of Howard County, Maryland.

There are no suits of action, leases, liens or trusts on the property included in this plan of subdivision.

March 4, 1963

HOWARD COUNTY DEVELOPMENT CORP.

Emil Heinisch WITNESS
Henry M. Witt HENRY M. WITT - President
Emil Heinisch WITNESS
Helen L. Witt HELEN L. WITT - Secretary

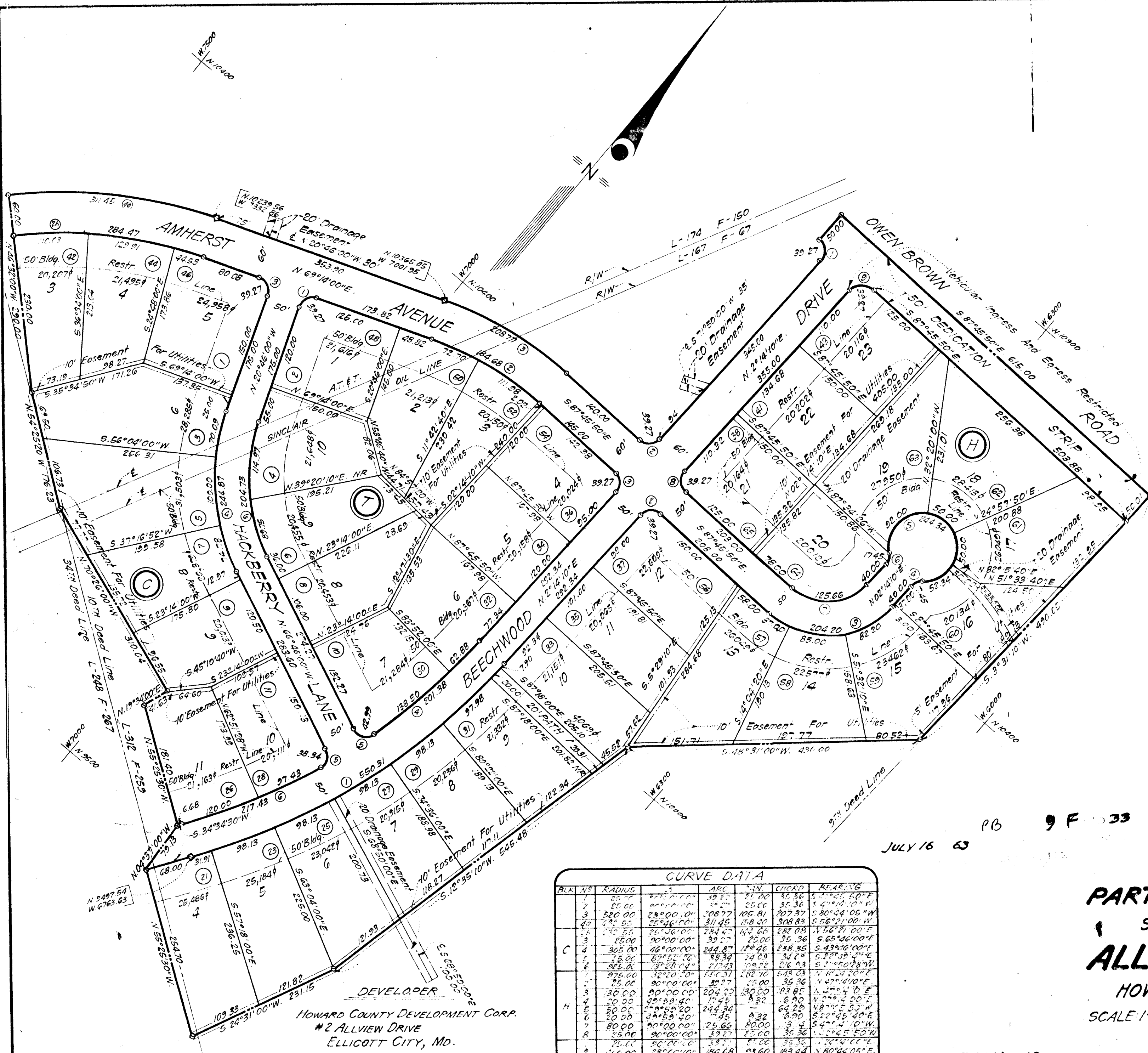
PB 9 F 33

JULY 16 63

BLOCK T AND PARTS OF BLOCKS C AND H
SIXTH ELECTION DISTRICT
ALLVIEW ESTATES
HOWARD COUNTY, MARYLAND
SCALE: 1"=100' MARCH, 1963

SECTION - 10

GREENHORNE & O'MARA
ENGINEERS & SURVEYORS
6715 KENILWORTH AVE.
RIVERDALE, MD.



CURVE DATA

BLK	NO.	RADIUS	ARC	CHORD	BEARING
1	1	25.00	39.27	21.00	S. 65° 46' 00" E
1	2	25.00	39.27	21.00	S. 24° 31' 00" W
1	3	520.00	28° 00' 00"	108.77	S. 80° 44' 05" W
1	4	28° 55'	25° 26' 00"	31.45	S. 56° 21' 00" W
1	5	25.00	39.27	21.00	S. 65° 46' 00" E
1	6	305.00	46° 00' 00"	244.87	S. 43° 36' 00" E
1	7	25.00	39.27	21.00	S. 24° 31' 00" W
1	8	28° 55'	25° 26' 00"	31.45	S. 56° 21' 00" W
1	9	25.00	39.27	21.00	S. 65° 46' 00" E
1	10	25.00	39.27	21.00	S. 24° 31' 00" W
1	11	25.00	39.27	21.00	S. 65° 46' 00" E
1	12	25.00	39.27	21.00	S. 24° 31' 00" W
1	13	25.00	39.27	21.00	S. 65° 46' 00" E
1	14	25.00	39.27	21.00	S. 24° 31' 00" W
1	15	25.00	39.27	21.00	S. 65° 46' 00" E
1	16	25.00	39.27	21.00	S. 24° 31' 00" W
1	17	25.00	39.27	21.00	S. 65° 46' 00" E
1	18	25.00	39.27	21.00	S. 24° 31' 00" W
1	19	25.00	39.27	21.00	S. 65° 46' 00" E
1	20	25.00	39.27	21.00	S. 24° 31' 00" W
1	21	25.00	39.27	21.00	S. 65° 46' 00" E
1	22	25.00	39.27	21.00	S. 24° 31' 00" W
1	23	25.00	39.27	21.00	S. 65° 46' 00" E
1	24	25.00	39.27	21.00	S. 24° 31' 00" W
1	25	25.00	39.27	21.00	S. 65° 46' 00" E
1	26	25.00	39.27	21.00	S. 24° 31' 00" W
1	27	25.00	39.27	21.00	S. 65° 46' 00" E
1	28	25.00	39.27	21.00	S. 24° 31' 00" W
1	29	25.00	39.27	21.00	S. 65° 46' 00" E
1	30	25.00	39.27	21.00	S. 24° 31' 00" W

HOWARD COUNTY PLANNING COMMISSION
APPROVED: *Wilma W. Jann*
DATE 7-10-63
Thomas H. Harris
PLANNING DIRECTOR

HOWARD COUNTY DEPARTMENT OF ROADS
APPROVED: 7-9-63
Kerman S. Neill
SUPERVISOR

APPROVED: *James O'Mara*
ENGINEER

Shown within the lots denotes House Nos.

Date 7-9-63