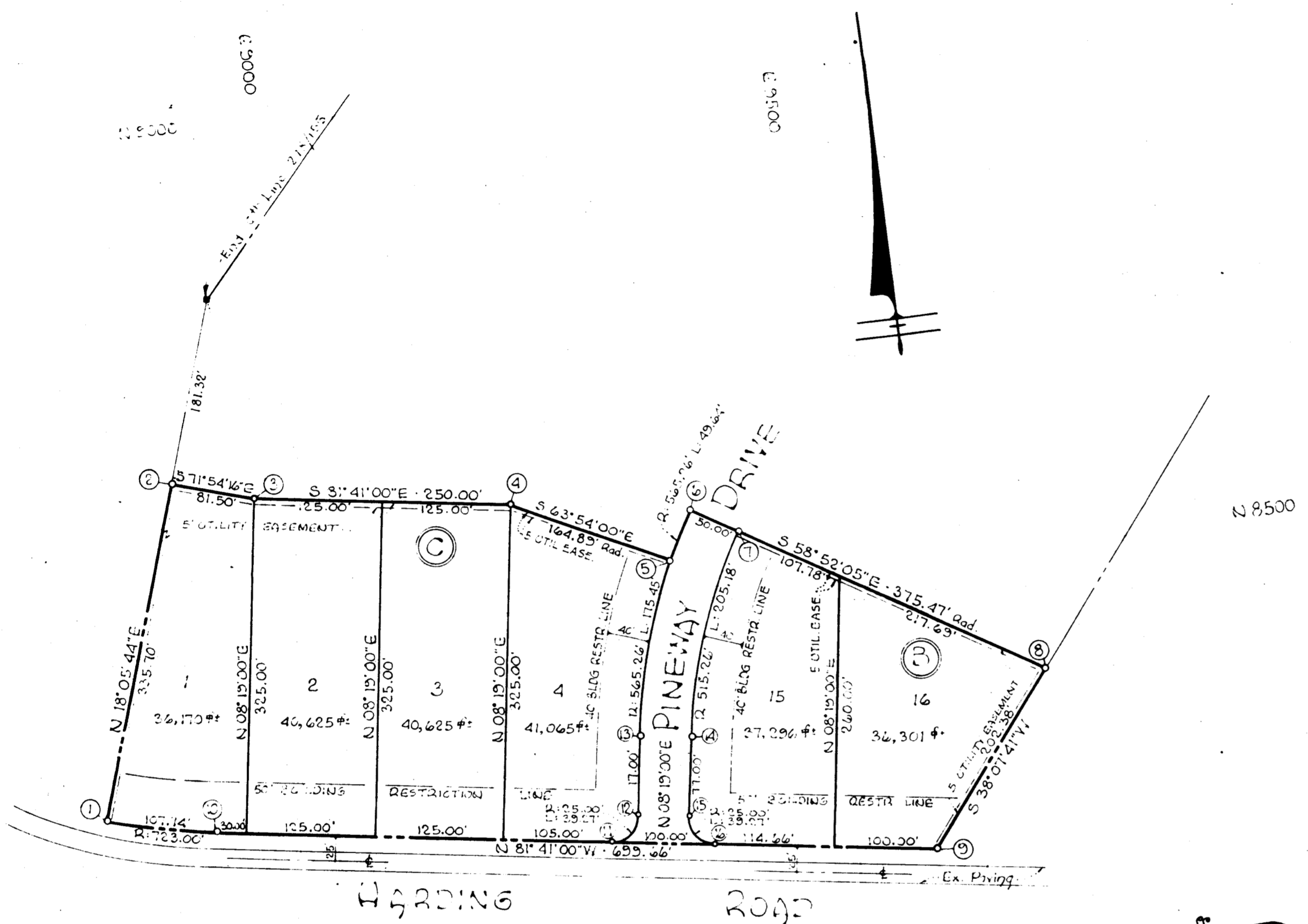


NOTE: TOTAL AREA SHOWN: 5.6635 Acres

NO. OF CURVE	RADIUS	LENGTH	TANGENT	DELTA	COORD. BEARING	CHORD DIST.
5-6	565.26'	49.64'	24.84'	25° 01' 55"	N 28° 36' 57" E	49.22'
10-1	723.00'	107.74'	53.97'	08° 32' 16"	N 71° 24' 52" W	107.24'
11-12	25.00'	39.27'	25.00'	90° 00' 00"	N 53° 19' 00" E	35.36'
13-5	565.26'	175.45'	88.43'	17° 47' 00"	N 77° 12' 30" E	174.74'
13-6	565.26'	225.09'	114.05'	22° 48' 55"	N 19° 43' 07" E	223.60'
14-14	515.26'	205.78'	103.97'	22° 48' 55"	S 5° 43' 07" W	203.82'
15-16	25.00'	39.27'	25.00'	90° 00' 00"	S 36° 41' 00" E	35.36'

COORDINATE TABLE		
NO.	NORTH	EAST
1	8348.46	8779.04
2	8367.55	8833.31
3	8672.24	8960.78
4	8606.08	9208.15
5	8533.55	9356.24
6	8577.11	9380.00
7	8551.25	9422.80
8	8382.98	9701.40
9	8223.80	9576.38
10	8325.00	8884.09
11	8269.31	9265.04
12	8290.43	9293.38
13	8366.62	9304.52
14	8359.39	9354.00
15	8283.20	9342.85
16	8254.85	9363.98



SECTION ONE
PINE VALLEY
 6th ELECTION DISTRICT · HOWARD COUNTY · MARYLAND
 FEBRUARY 14, 1963
 SCALE: 1"=100'

RECORDED PLAT BOOK 9 FOLIO 32
 ON July 12 1963 AMONG THE LAND RECORDS OF
 HOWARD COUNTY, MD.

OWNER & DEVELOPER
 THE S. AND C. CONSTRUCTION CORP.
 NO. 111 9TH STREET, LAUREL, MARYLAND

NOTE: The coordinates shown hereon are from Assumed Datum.

Approved: Howard County Planning Commission
 Chairman: *William J. ...* 7-10-63
 Director: *Thomas D. Harris, Jr.* 7-10-63
 Approved: Howard County Highways Department
 Roads Engineer: *Thomas S. ...* 7-12-63
 Approved: Howard County Metropolitan Comm.
 Chief Engineer: *Carl W. Meyer* 7-12-63

OWNER'S CERTIFICATE:
 We, The S. AND C. CONSTRUCTION CORPORATION, owner of the property shown and described hereon, accept this plan of subdivision and reserve the fee simple title to the beds of the streets and/or roads shown hereon and in consideration of the plat by the Planning Commission of Howard County, we for ourselves, our heirs or assigns do hereby give and grant unto the Board of County Commissioners of Howard County, the right and option to acquire for the consideration of One Dollar, the fee simple title to the beds of the streets and/or roads shown hereon within the period of 5 years from the date of the recording of this plat among the Land Records of Howard County, Maryland.
 Witness our hands and seals this 5th day of April, 1963.
Harry M. Susini
 HARRY M. SUSINI, Secretary

ENGINEER'S CERTIFICATE:
 I, Curt A. H. Jeschke, hereby certify that the plan shown hereon is correct, that it, a subdivision of the land which by deed dated June 24, 1963, and recorded among the Land Records of Howard County, Md in Liber W.H.H.402 at folio 675, was granted and conveyed by Harry M. Susini and Harry A. Susini, co-partners trading as Laurel Investment Company, et al., to the S. and C. Construction Corporation, and that Concrete Monuments marked thus ■ are in place as shown.
 I further certify that the requirements of Section 72B, Article 17 of the Annotated Code of Maryland (as amended) as far as they relate to the making of this plat have been complied with.
 DATE: April 9, 1963
Carl A. H. Jeschke
 REG. NO. 2381

PURDUM & JESCHKE
 ENGINEERS
 24 Park Avenue
 Ellicott City, Maryland