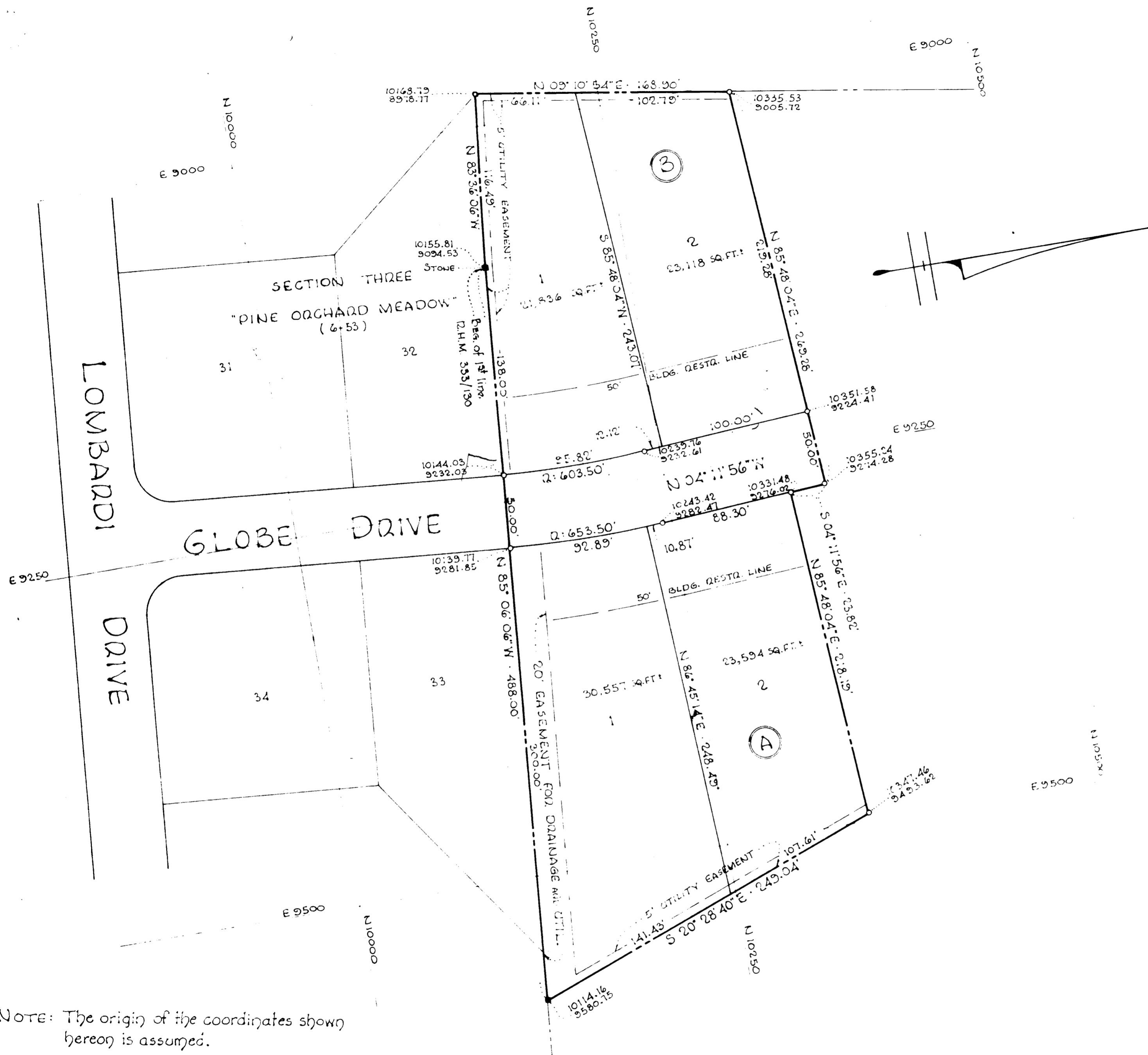


TOTAL AREA SHOWN: 2.518 Acres ±



SECTION ONE
"FAIRWAY HILL"

2ND ELECTION DISTRICT · HOWARD COUNTY · MD.

OCTOBER 30, 1962

SCALE: 1"=50'

DEVELOPER
 EDWARDS AND WILSON, INC.
 LOVENTREE DRIVE · ELLICOTT CITY, MD.

NOTE: The origin of the coordinates shown hereon is assumed.

RECORDED PLAT BOOK 2 FOLIO 13
 ON Feb 6 1963 AMONG THE LAND RECORDS OF
 HOWARD COUNTY, MD.

APPROVED: HOWARD COUNTY PLANNING COMM.
Wilma D. Lamm 1-30-63
 Chairman Date
Thomas A. Harris Jr. 1-30-63
 Director Date

APPROVED: HOWARD COUNTY HIGHWAYS DEPARTMENT
Harmon S. Crill 2-5-63
 Roads Engineer Date

APPROVED: HOWARD COUNTY METROPOLITAN COMM.
Carl W. Meyer 2-5-63
 Chief Engineer Date

OWNERS CERTIFICATE:

We, Kendale Enterprises, Inc., owner of the property shown and described hereon, adopt this plan of subdivision and reserve the fee simple title to the beds of the streets and/or roads shown hereon and in consideration of the plat by the Planning Commission of Howard County, we for ourselves, our heirs or assigns do hereby give and grant unto the Board of County Commissioners the right and option to acquire for the consideration of One Dollar, the fee simple title to the beds of streets and/or roads shown hereon within the period of five years from the date of the recording of this plat among the Land Records of Howard County, Maryland.
 Witness our hands and seals this 2nd day of January, 1963

Les J. Will, President

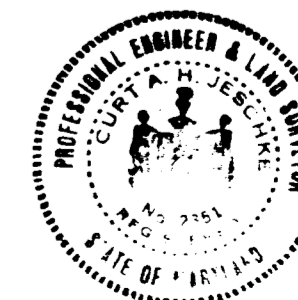
ENGINEERS CERTIFICATE:

I, Curt A. H. Deschke, hereby certify that the plan shown hereon is correct, that it is a subdivision of a part of the land which by deed dated May 22, 1959 and recorded among the Land Records of Howard County, Maryland in Liber D.H.M. 333 at Folio 130 was granted and conveyed by Joshua Sewell Cross, et al to Kendale Enterprises, Inc. and that stones or concrete monuments are in place as shown.

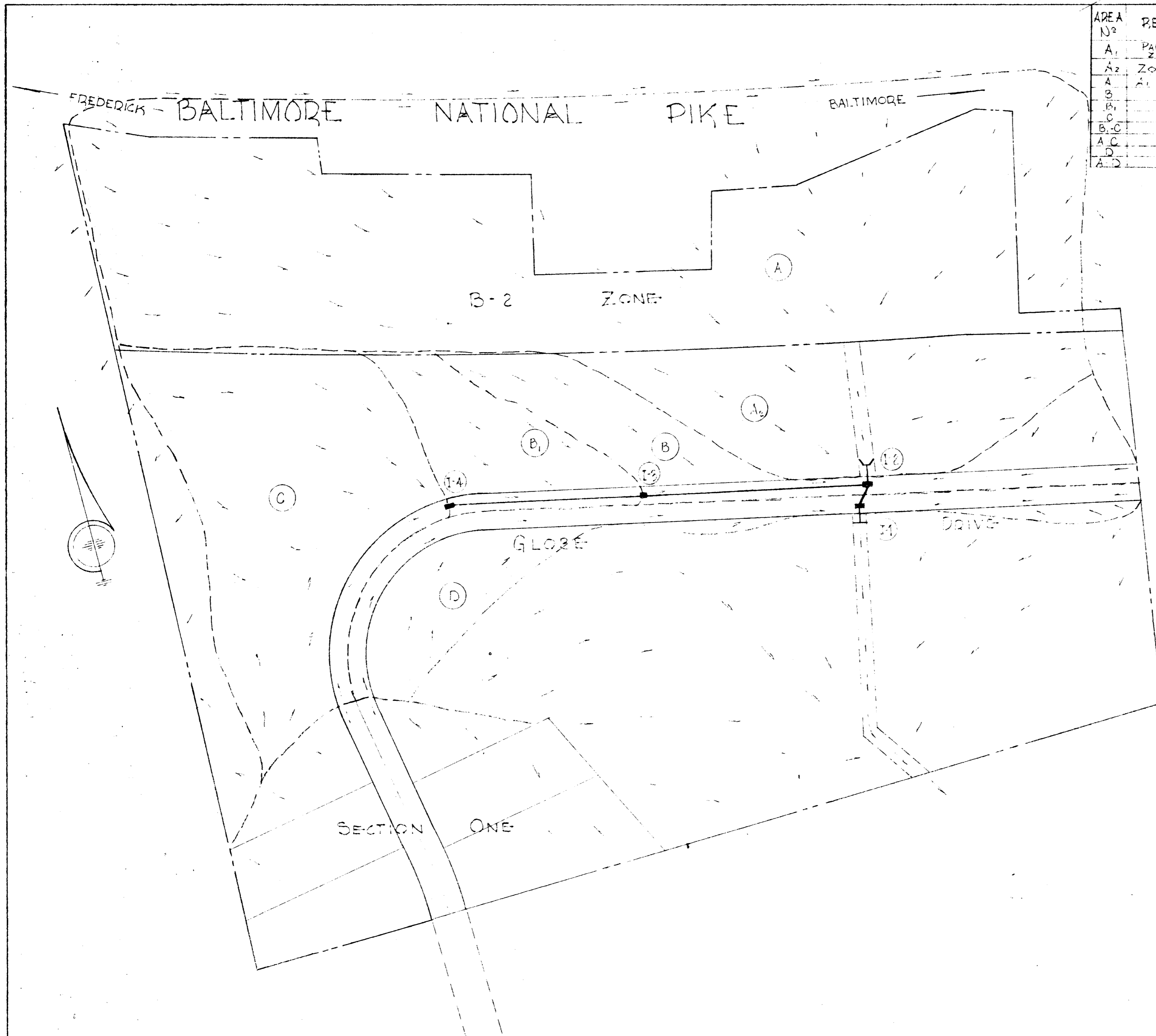
I further certify that the requirements of Section 72B, Article 17 of the Annotated Code of Maryland (as amended) as far as they relate to the making of this plat have been complied with.

January 11, 1963 *Curt A. H. Deschke*
 DATE

PURDUM & DESCHKE
 ENGINEERS
 24 Park Avenue
 Ellicott City, Maryland



FSP 166



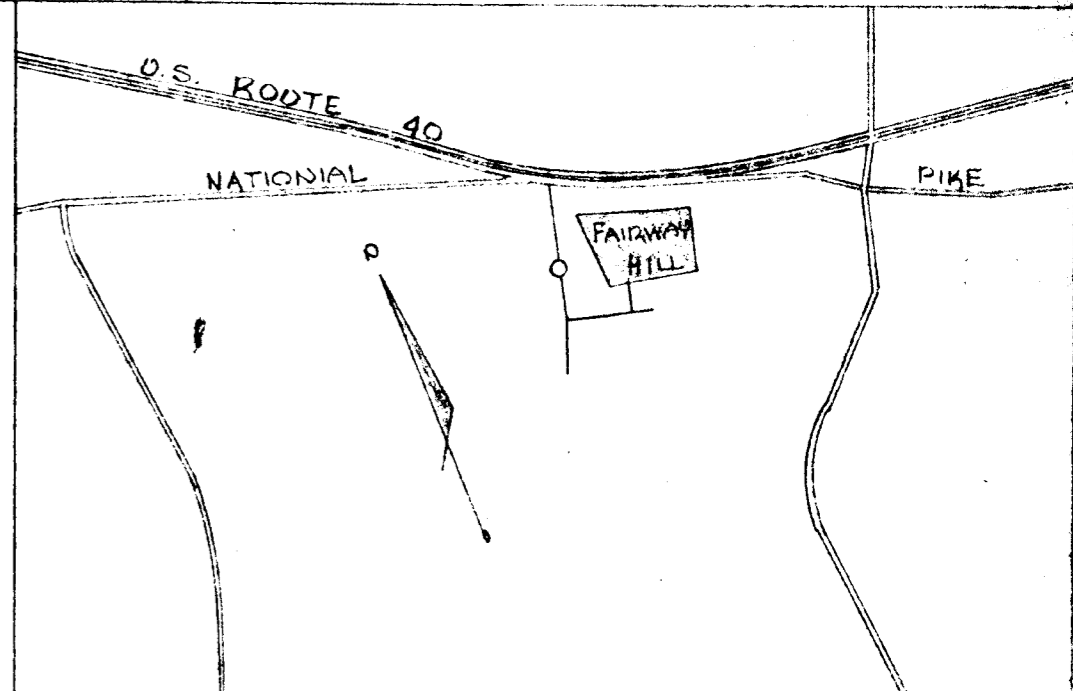
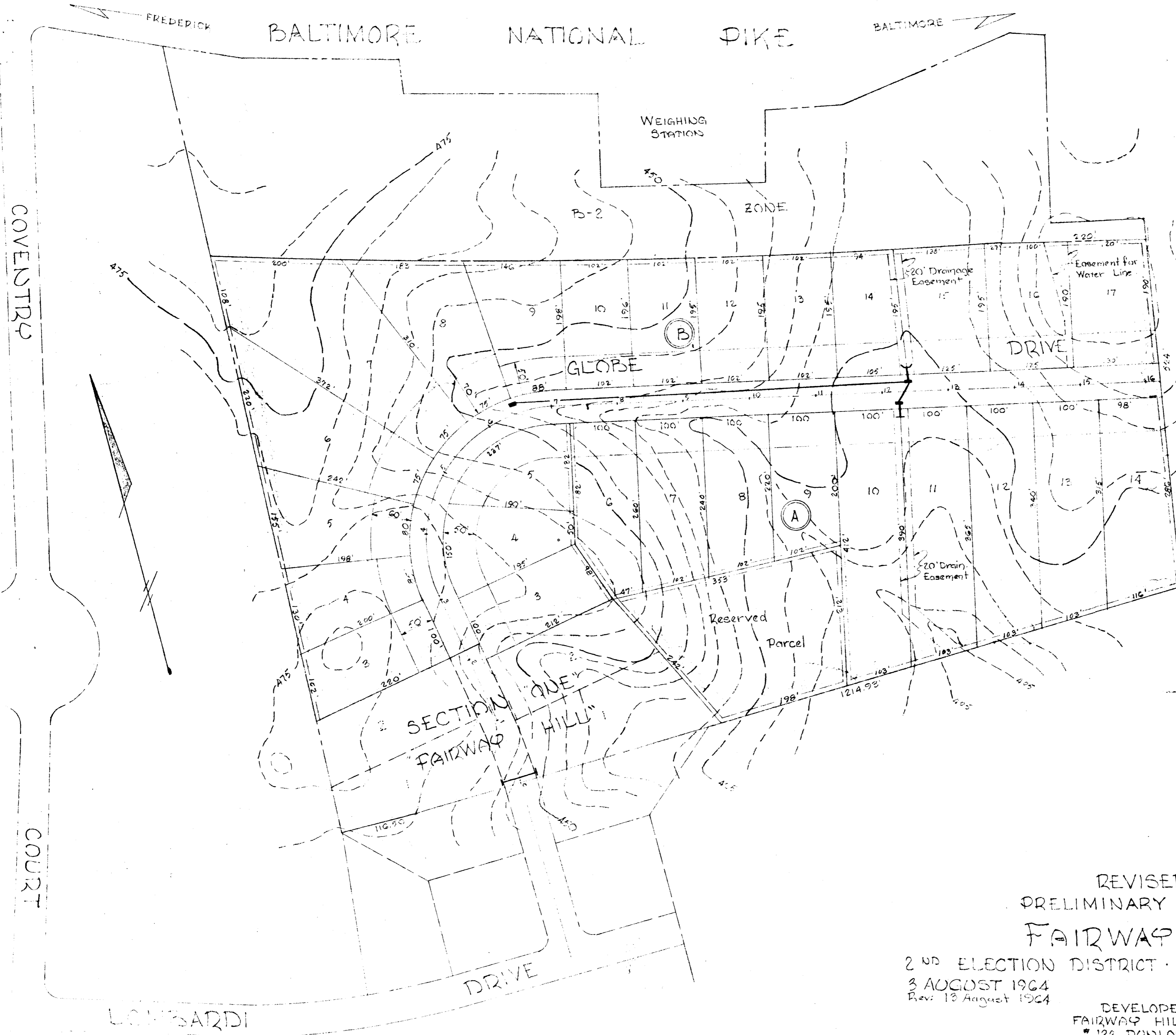
AREA No	REMARKS	INCR ACRES	TOTAL ACRES	'C'	'C-A'	ACCUM TIME C-A	I CONCENT in/hr	Q cfs	SLOPE Min	Act	VEL ft	L ft	PIPE SIZE
A1	PARTIALLY ZONED B-2	11.5	-	0.75	8.63	-	-	-	-	-	-	-	-
A2	ZONED R-20	2.3	-	0.40	0.92	-	-	-	-	-	-	-	-
A	A1 + A2	-	13.8	-	-	9.55	16	4.9	16.8	0.22	5.00	18	12" 42"
B1		1.0	-	0.40	0.64	-	10	5.8	3.7	-	-	-	-
B		3.5	-	0.40	1.40	-	8	6.1	2.4	-	-	-	-
C		-	4.5	0.40	-	1.60	12	5.4	7.6	1.80	6.00	11.1	28.5" 15"
B1-C		-	19.9	-	-	11.99	16	4.9	58.8	0.34	1.82	12.1	38" 42"
D		1.7	-	0.60	0.85	-	10	5.8	4.9	-	-	-	-
A-D		-	21.6	-	-	12.84	16	4.9	62.9	0.40	1.00	11.2	12" 42"

INLET AREA No	ACRES	TIME CONCENT in/hr	I	'C'	'C-A'	Q cfs	RDWAY SLOPE	INLET TYPE	INLET CAP	REMARKS
I-1	1.7	10	5.8	0.60	0.85	4.9	Sump	"A"	7.5	AREA - D
I-2	1.6	10	5.8	0.40	0.64	3.7	Sump	"E"	10.0	" B
I-3	1.0	8	6.1	0.40	0.40	2.4	5.00	"E"	4.1	" B1
I-4	3.5	12	5.4	0.40	1.40	7.6	6.50	"E"	7.7	" C

SEPT. 1964

DURDUM & JESCHKE
ENGINEERS
24 PARK AVENUE
ELLICOTT CITY, MD

REVISED
DRAINAGE AREA MAP
"FAIRWAY HILL"
2ND ELECTION DIST. - HOWARD CO. MD.
August 4, 1964
Rev. 31 August 1964
Scale: 1"=100'



LOCATION MAP
SCALE: 1"=200'

GENERAL NOTES

1. AREA: 23 ACRES.
2. TOTAL NO. LOTS: 31.
3. ZONED: R-20.
4. CONTOURS FROM AERIAL SURVEY.
5. ALL BUILDING LINES 50' UNLESS NOTED.
6. ALL UTILITY EASEMENTS 5' PER SIDE.

REVISED
PLANNING COMMISSION
CITY
RECEIVED

DATE AUG 13 1964

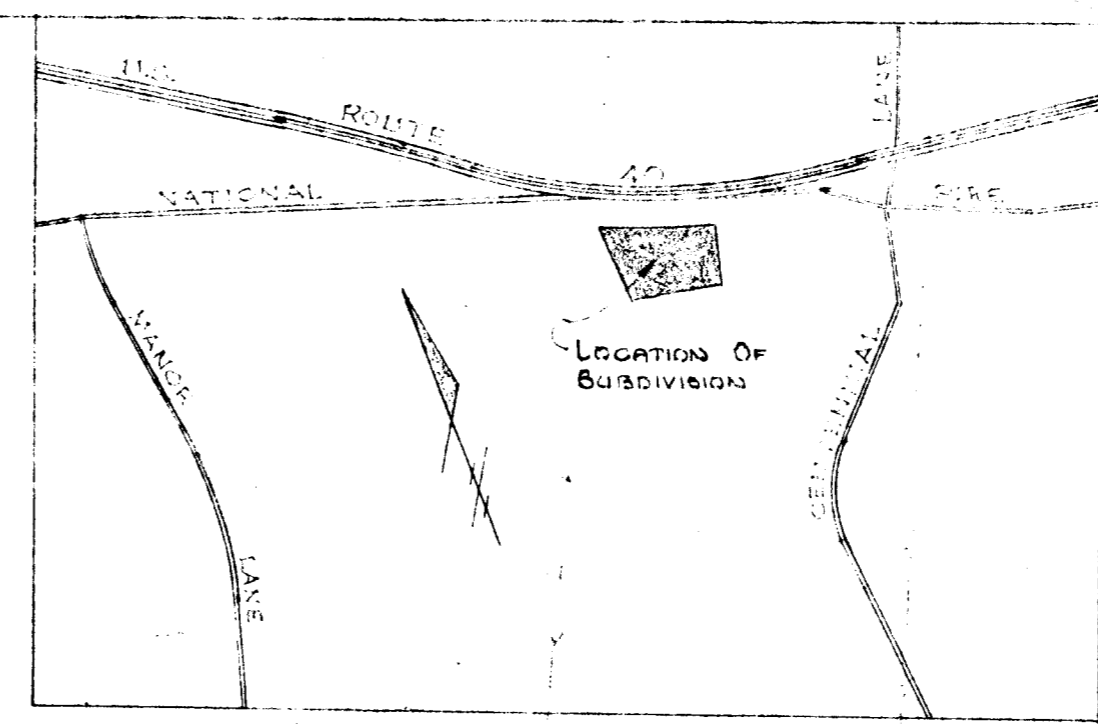
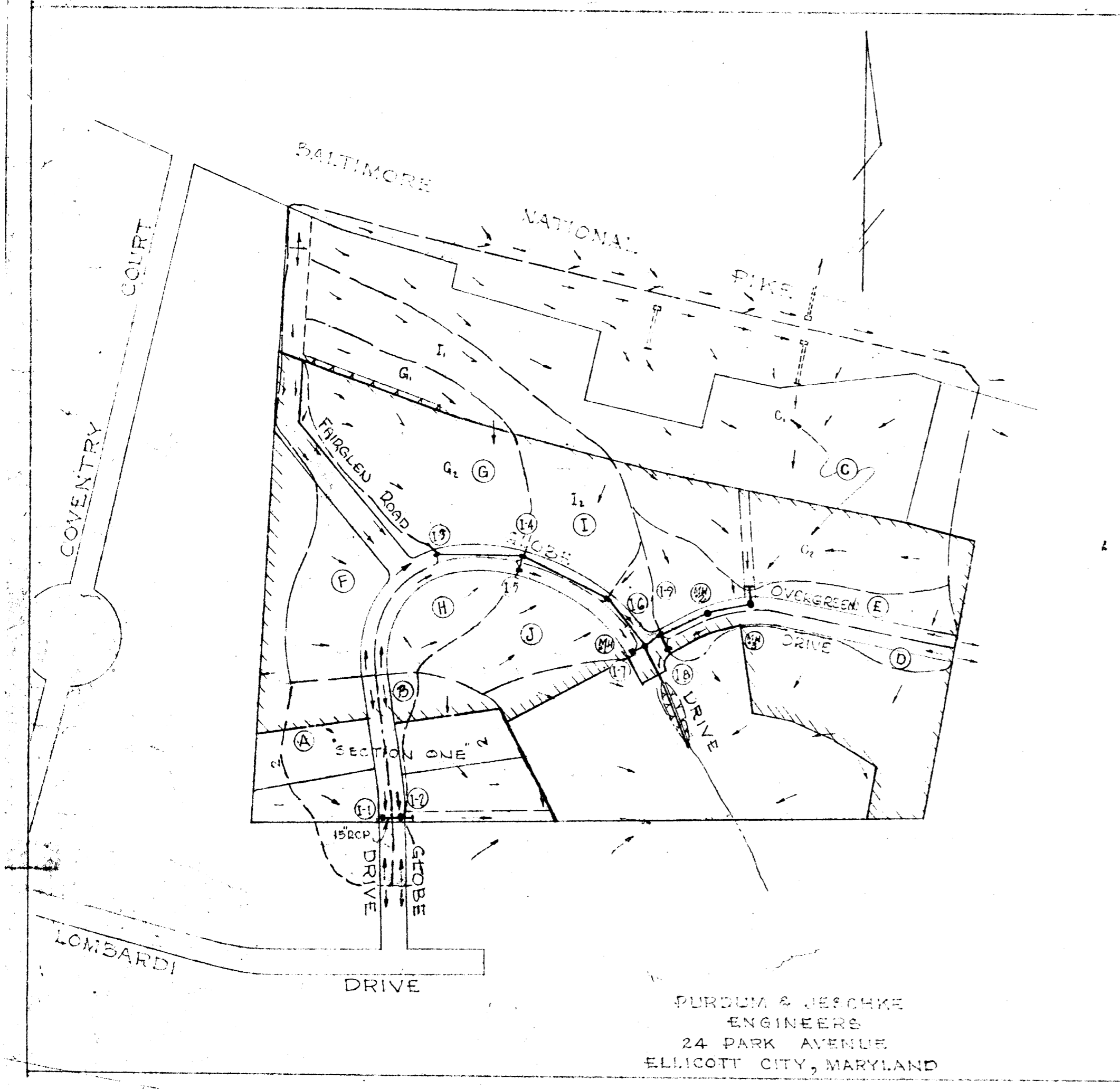
HOWARD COUNTY
PLANNING COMMISSION

REVISED
PRELIMINARY PLAN
FAIRWAY HILL

2ND ELECTION DISTRICT - HOWARD CO., MD.
3 AUGUST 1964
Rev: 13 August 1964
SCALE: 1"=100'

DEVELOPER
FAIRWAY HILL, INC.
122 DONLOGGINS RD
ELLCOTT CITY, MD. 1

9



VICINITY MAP
SCALE: 1" = 200'

RECEIVED
MAR 25 1964
HOWARD COUNTY
PLANNING COMMISSION

**DRAINAGE AREA MAP
FAIRWAY HILL**

SECOND ELECTION DISTRICT,
HOWARD COUNTY, MARYLAND

SCALE: 1" = 200'

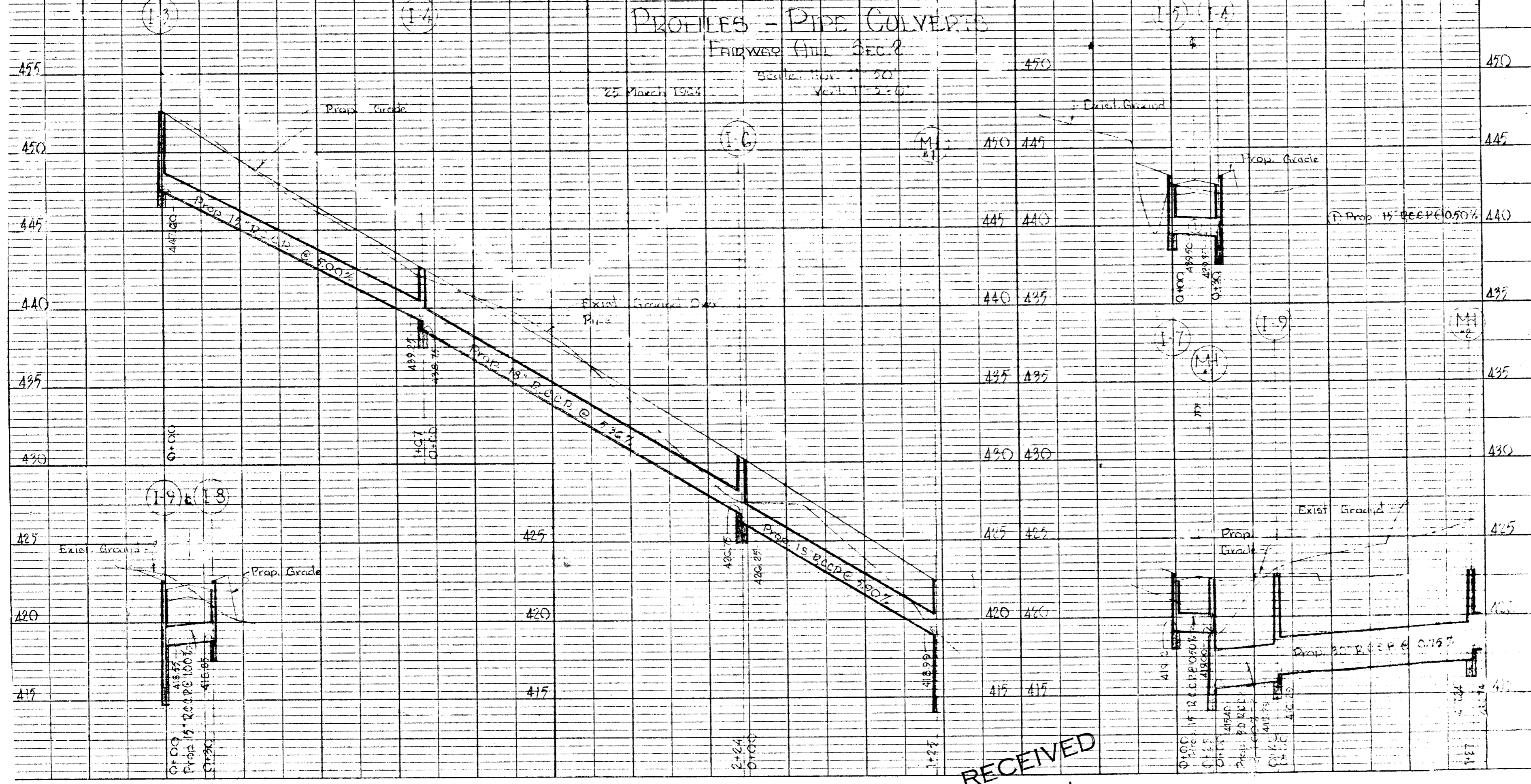
OCT. 5, 1962
JAN. 11, 1963
MAR. 25, 1964

PURDUM & JESCHKE
ENGINEERS
24 PARK AVENUE
ELLCOTT CITY, MARYLAND

PROFILES - PIPE CULVERTS

FAIRWAY Hill Sec 2

25 March 1924
 Scale: Hor. 1" = 50'
 Vert. 1" = 5'



RECEIVED

MAR 26 1924
 MARYLAND COUNTY COMMISSION

PLATE 1 - PLAN - PROFILE O. P. R. & R. E. STANDARD
 KEUFFEL & ESSER CO., NEW YORK.
 K & E CO., NO. 345-1 MADE IN U. S. A. 24025

PURDUM & JESSUP
 ENGINEERS
 24 PARK AVENUE
 ELLICOTT CITY, MARYLAND