

APPROVED BY

9-20-62 Wilmer M. Sanner  
 Date Wilmer M. Sanner, Chairman of Planning Commission

9-19-62 Thomas G. Harris Jr.  
 Date Thomas G. Harris Jr., Planning Director

9-25-62 Herman O'Neill  
 Date Herman O'Neill, County Roads Supervisor

9-19-62 Carl W. Meyers  
 Date Carl Meyers, Chief Engineer of the Metropolitan Commission

CURVE DATA

CURVE	RADIUS	ANGLE	ARC	TANGENT	CHORD
A	25.00'	90° 00'	39.27	25.00'	N 18° 50' W 35.36
B	25.00'	90° 00'	39.27	25.00'	S 71° 10' W 35.36
C	25.00'	83° 56'	37.36	22.48'	S 21° 52' E 33.43
D	1627.22	66° 15'	177.50'	88.84	S 16° 58' 30" W 177.42

OWNERS DEDICATION

I, Richard M. Hallowell, President of River Farms Inc. a body corporate of the State of Maryland owner of the property shown and described hereon, adopt this plan of subdivision and reserve the fee simple title to the beds of the streets and/or roads shown hereon, and in consideration of the approval of this plat by the Planning Commission of Howard County, I, or assigns do hereby give and grant unto the Board of County Commissioners of Howard County the right and option to acquire for the consideration of One Dollar the fee simple title to the beds of the streets and/or roads shown hereon within the period of Five years from the date of the recording of this plat among the Land Records of Howard County.

Witness my hand and seal this 20<sup>th</sup> day of August 1962

Richard M. Hallowell  
 Richard M. Hallowell, President  
 River Farms Inc.  
 131 Cornus Lane  
 Ellicott City, Maryland

ENGINEERS CERTIFICATE

I, hereby certify that the plan shown hereon is correct; that it is a subdivision of a part of of the land which by deed dated May 14, 1962 and recorded among the Land Records of Howard County in Liber No. 383, Folio 441 etc. was granted and conveyed by the Wheeler Holding Company and James B. Watriss to River Farms Inc. and that iron pipes marked thus  $\circ$  and concrete Monuments marked thus  $\bullet$  are in place as shown hereon.

I further certify that the requirements of Section 72 A to 72 D of the Annotated Code of Maryland Acts of 1951 (Title Clerk of Court - Subtitle Clerk of Circuit Court) as far as they relate to the marking of this plat and the setting of markers have been complied with.

Claude M. Skinner Jr.  
 Claude M. Skinner Jr. Reg. Engineer and Land Surveyor No. 2237  
 11 Court Place  
 Ellicott City, Maryland

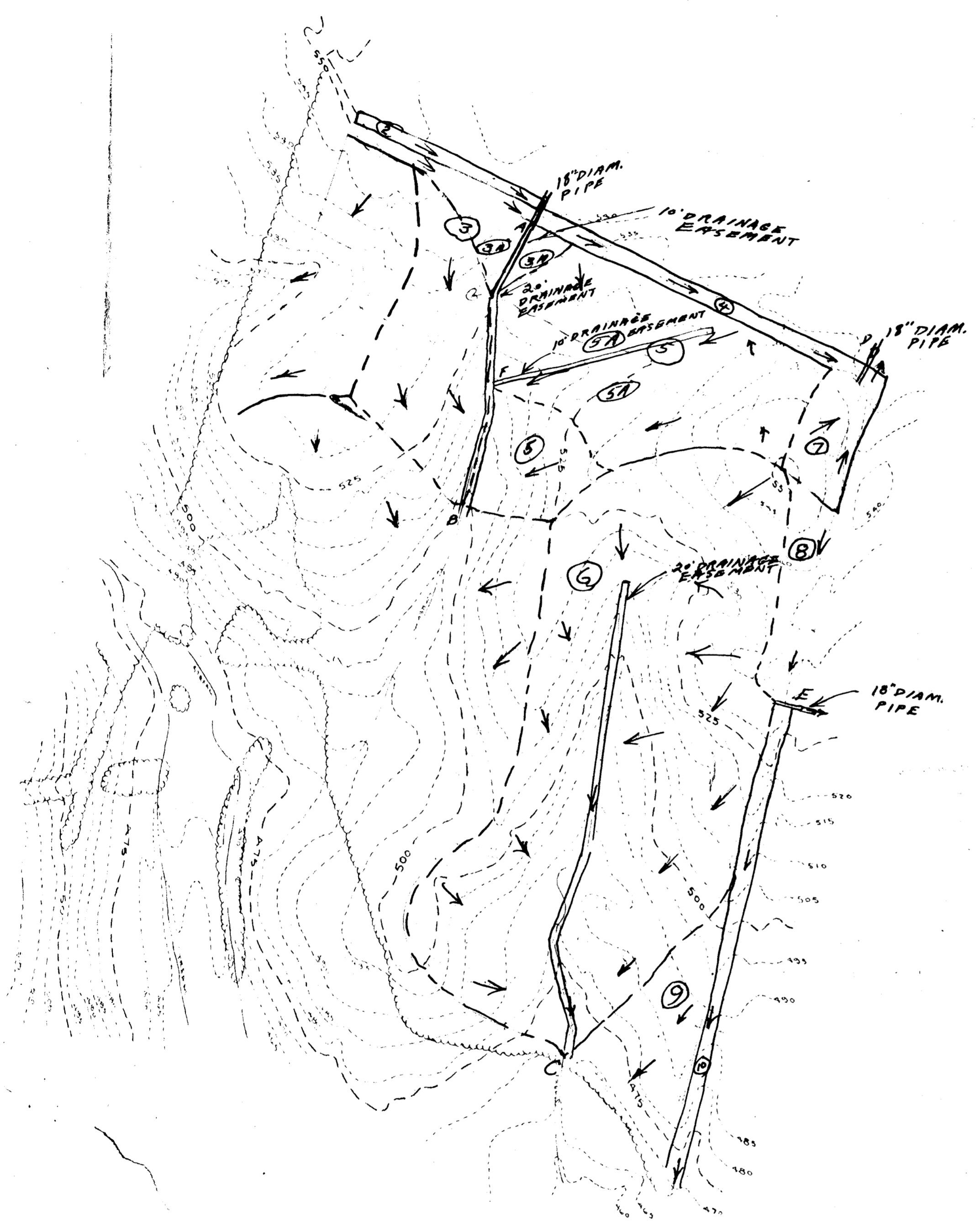
MAP OF  
 RIVER FARMS INC. SECTION I  
 FOURTH ELECTION DISTRICT OF HOWARD COUNTY  
 DAISY, MARYLAND  
 SCALE: 1 IN. = 200 FT. AUGUST 21, 1962

RECEIVED

OCT 2 1962  
 HOWARD COUNTY  
 PLANNING COMMISSION

229

RECORDED PLAT BOOK 8 FOLIO 93  
 ON 10/2 1962 AMONG THE LAND RECORDS OF  
 HOWARD COUNTY, M.D.



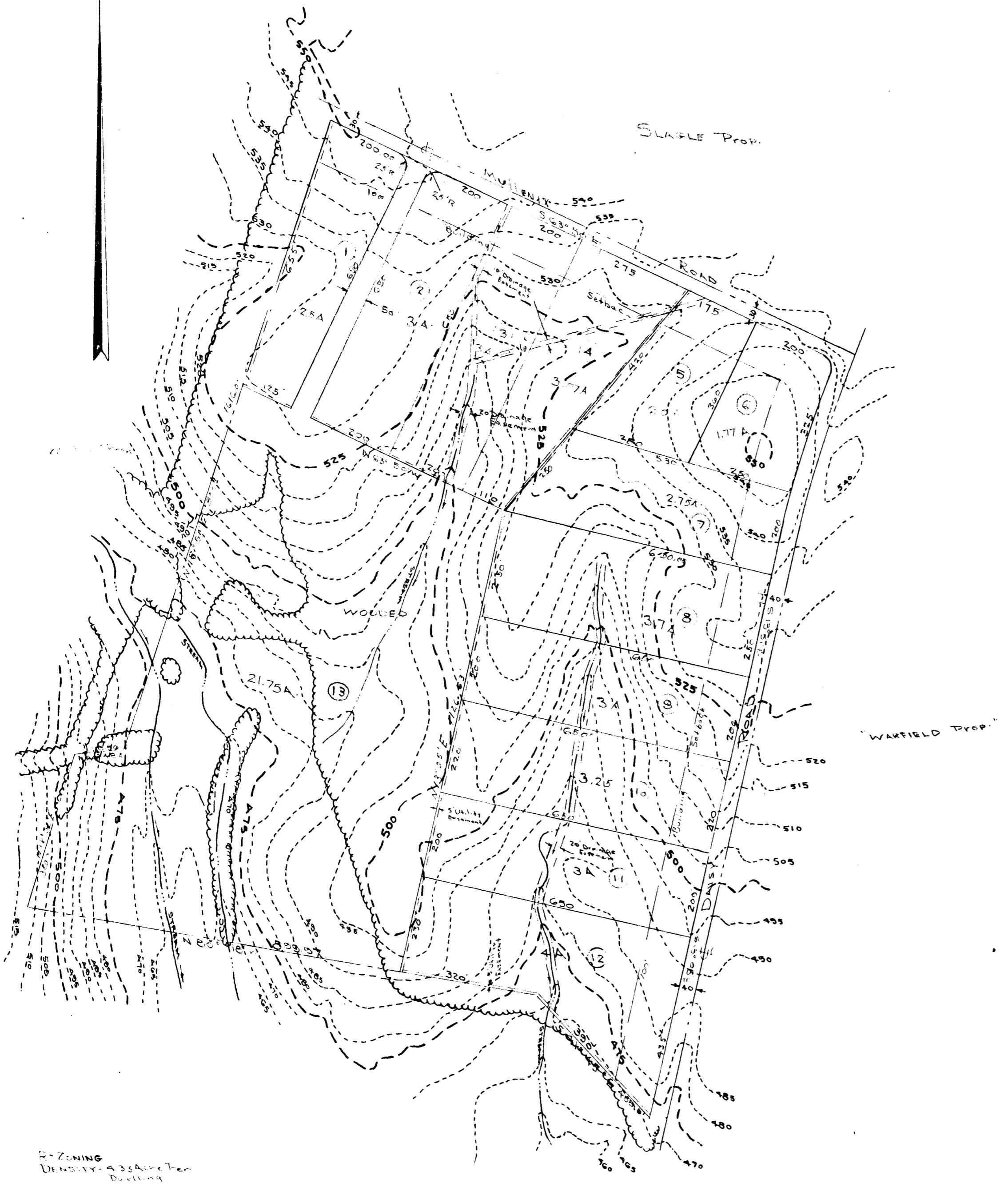
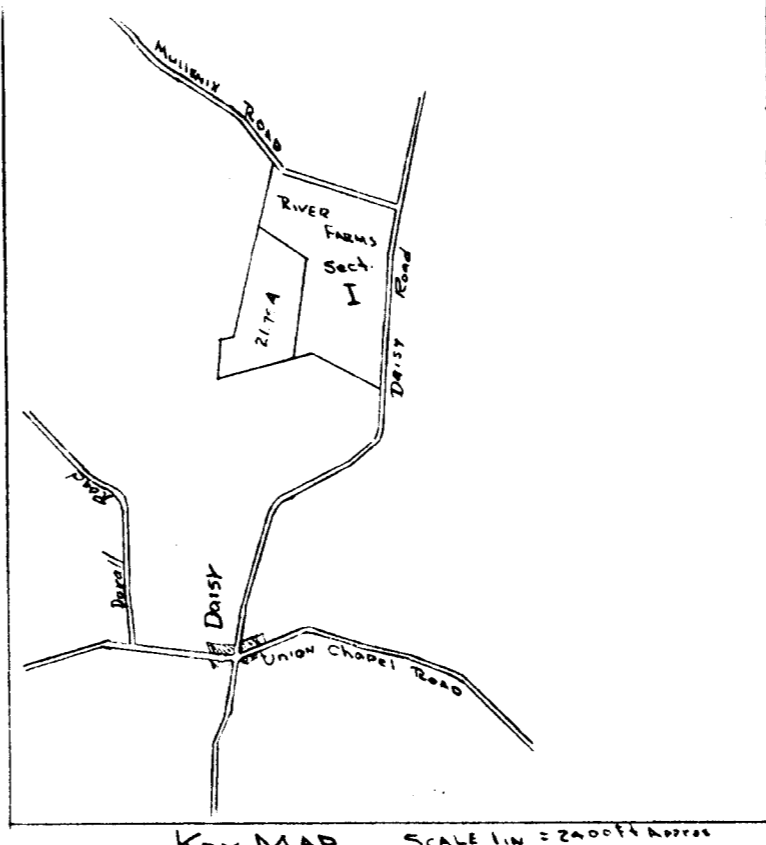
- AREAS**
- 1- 3.00 AC.
  - 2- 0.37 AC.
  - 3- 3.80 AC.
  - 4- 0.45 AC.
  - 5- 7.32 AC.
  - 6- 18.32 AC.
  - 7- 0.79 AC.
  - 8- 1.17 AC.
  - 9- 1.62 AC.
  - 10- 1.00 AC.
  - 5A- 5.83 AC.

DRAINAGE STUDY

Submitted by: John S. Johnson I  
 For: Howard County Planning Commission  
 Date: JULY 13, 1962

229

RECEIVED  
 JUL 16 1962  
 HOWARD COUNTY  
 PLANNING COMMISSION



PRELIMINARY PLAN  
 RIVER FARMS SECTION I  
 FOURTH ELECTION DISTRICT OF HOWARD COUNTY  
 DAISY, MARYLAND  
 SCALE 1 IN. = 200 FT.      JULY 3, 1962

DEVELOPER  
 RICHARD M. HALLOWELL, PRESIDENT  
 131 CORNUS LANE  
 ELLICOTT CITY, MARYLAND

ENGINEER  
 CLAUDE M. SKINNER JR. REG. P.E. (L.S. No. 2237)  
 11 COURT PLACE  
 ELLICOTT CITY, MARYLAND

229  
 RECEIVED

RECEIVED

JUL 16 1962  
 HOWARD COUNTY  
 PLANNING COMMISSION.