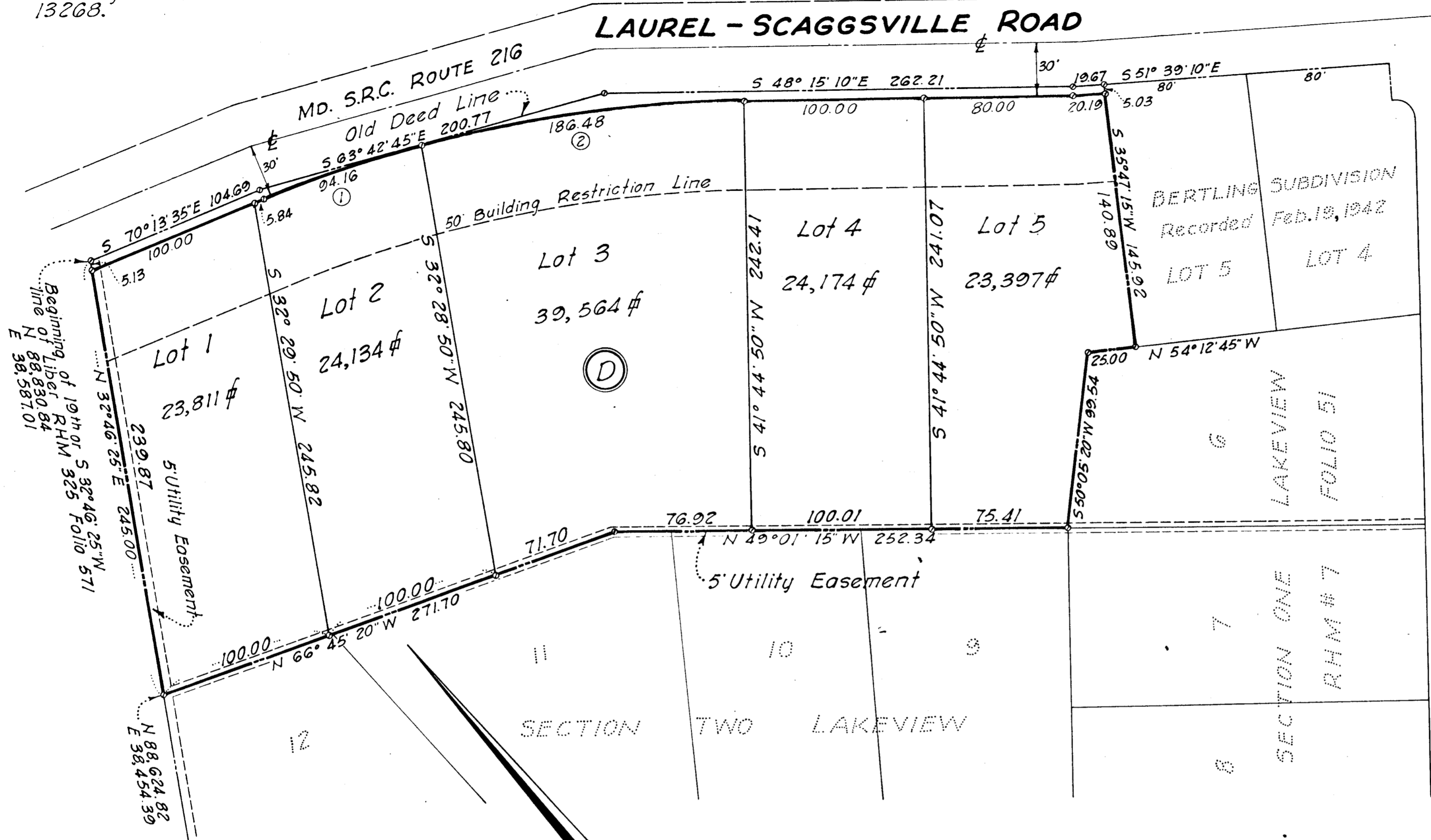


Note:  
Coordinate system and azimuth  
based on Washington Suburban  
Sanitary Commission stations 132674  
13268.

CURVE DATA						
NO	RADIUS	Δ	ARC	TAN.	CHORD	BEARING
1	731.78	07°22'21"	24.16	47.14	94.00	566°32'25"E
2	731.78	14°36'04"	186.48	93.74	185.96	555°33'12"E



HOWARD COUNTY PLANNING COMMISSION  
APPROVED:  
*William M. Hanner* 6-1-62  
CHAIRMAN DATE  
*Thomas J. Harris, Jr.* 5-29-62  
DIRECTOR DATE

HOWARD COUNTY METROPOLITAN COMMISSION  
APPROVED:  
*Carl W. Meyer* 5-29-62  
CHIEF ENGINEER DATE

HOWARD COUNTY HIGHWAYS DEPARTMENT  
APPROVED:  
*Harmon S. McMill* 5-29-62  
SUPERINTENDENT DATE

OWNER'S DEDICATION

We, the S. and C. Construction Corporation, a Maryland Corporation by Harry M. Susini, President, and Harry A. Susini, Secretary, owners of the property shown hereon and described in the Engineers Certificate hereby adopt this plan of subdivision and reserve the fee simple title to the beds of the streets and/or roads shown hereon, and in consideration of the approval of this plat by the Planning Commission of Howard County, We for ourselves, our heirs or assigns do hereby give and grant unto the Board of County Commissioners of Howard County the right and option to acquire for the consideration of One Dollar, the fee simple title to the beds of the streets and/or roads shown hereon, within the period of five years from the date of the recording of this plat among the Land Records of Howard County, Maryland. There are no suits of action, leases, liens or trusts on the property included in this plan of subdivision.

Date April 30<sup>th</sup> 1962  
S. and C. Construction Corp.

Attest *Harry A. Susini* By *Harry M. Susini*  
HARRY A. SUSINI, SECRETARY HARRY M. SUSINI, PRESIDENT

ENGINEER'S CERTIFICATE

I hereby certify that the plan shown hereon is correct; that it is a subdivision of all of the land conveyed to the S. and C. Construction Corporation by Harry M. Susini and Harry A. Susini copartners trading as Laurel Investment Company by deed dated April 18, 1962 and recorded in Liber 382 at Folio 279 among the land records of Howard County, Maryland. That iron pipes indicated thus: ⊙ have been placed as shown. The total area included in this plan of subdivision is 3.18 acres. I further certify that the requirements of section 72A to 72D of the Annotated Code of Maryland Acts of 1951 (Title Clerk of Court-Subtitle Clerk of Circuit Court) as far as they relate to the markings of this plat and the setting of markers have been complied with.

4-18-62  
DATE *Marius C. Jepsen*  
MARIUS C. JEPSESEN  
REGISTERED LAND SURVEYOR MD. NO 1535

SECTION THREE  
LAKEVIEW

LOTS 1, 2, 3, 4 AND 5, BLOCK "D"  
SOUTH SIDE - MD. ROUTE 216  
TWO MILES N.W. OF LAUREL  
SIXTH DISTRICT HOWARD COUNTY, MARYLAND  
SCALE 1"=50' OCTOBER, 1961

OFFICE OF  
JOHN W. MULLICAN  
BELL STATION ROAD  
GLENN DALE, MARYLAND

RECORDED PLAT BOOK 8 FOLIO 76  
ON 615 1962 AMONG THE LAND RECORDS OF  
HOWARD COUNTY, MD.

Owners: S. AND C. Construction Corp.  
111 9TH Street, Laurel, Md.

FSP 130