

**OWNERS DEDICATION**

We, Harry B. Giardina and Jessica A. Giardina, co-partners, trading as Giardina Company, and owners of the property shown and described hereon, adopt this plan of subdivision and reserve the fee simple title to the beds of the streets and/or roads shown hereon, and in consideration of the approval of this plat by the Planning Commission of Howard County, we for ourselves, our heirs or assigns hereby give unto the Board of County Commissioners of Howard County the right and option to acquire for the consideration of one dollar the fee simple title to the beds of the streets and/or roads shown hereon, within the period of five years from the date of the recording of this plat among the Land Records of Howard County.

Witness our hands and seals this 3<sup>rd</sup> day of Oct., 1961.

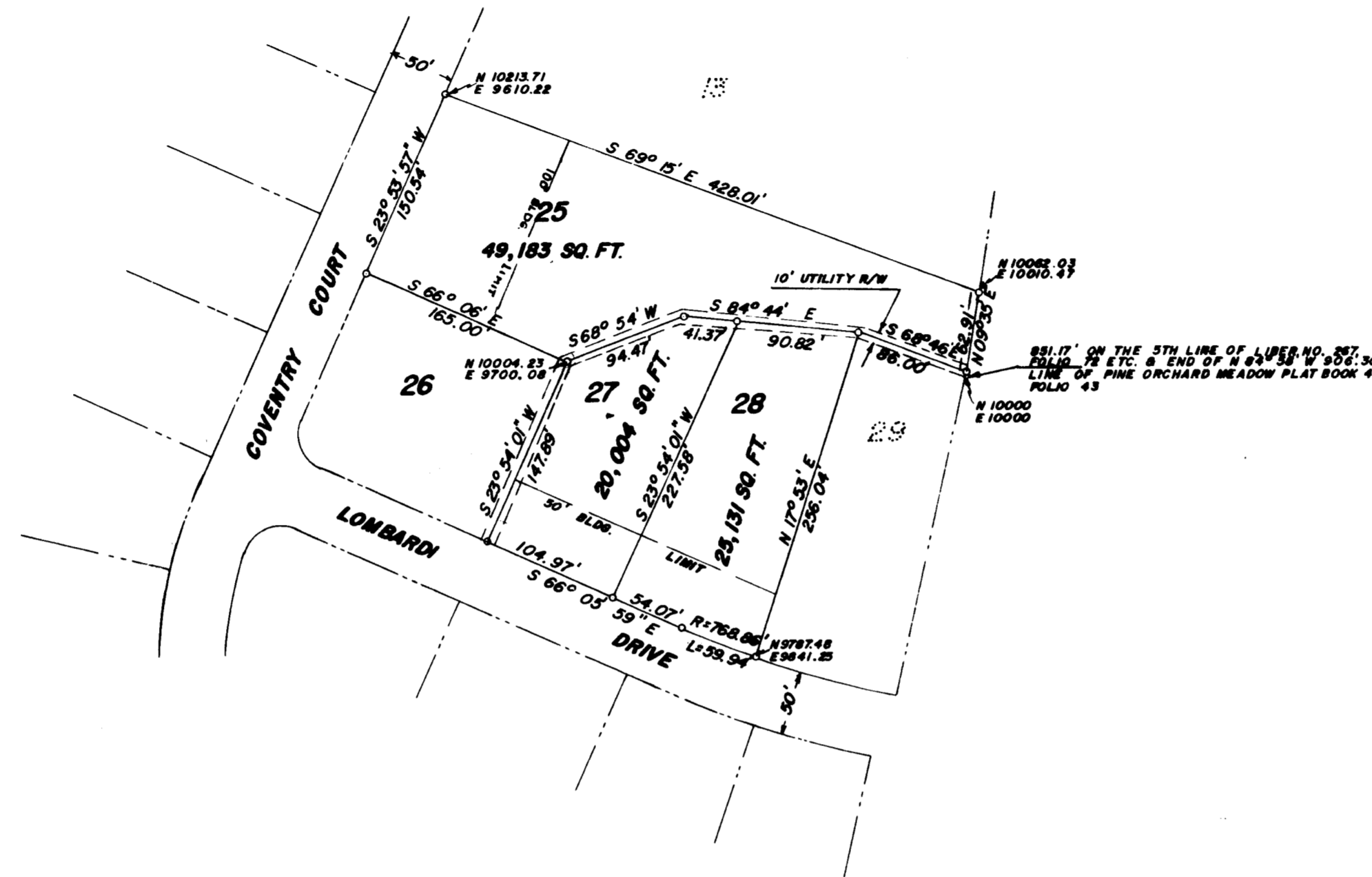
*Harry B. Giardina*  
 HARRY B. GIARDINA  
 Harry B. Giardina

*Jessica A. Giardina*  
 JESSICA A. GIARDINA  
 Jessica A. Giardina

**ENGINEERS CERTIFICATE**

I, hereby certify that the plan shown hereon is correct; that it is a subdivision of a part of the land which by deed dated April 23, 1954 and recorded among the Land Records of Howard County in Liber No. 253, folio 57B, was granted and conveyed by Harry R. Giardina & Son, Inc., and also a part of that land which by deed dated April 2, 1955 and recorded among the said Land Records in Liber No. 267, folio 72 etc. was granted and conveyed by Everett W. Ballew to Harry B. Giardina and Jessica A. Giardina, co-partners trading as Giardina Company, and that iron pipes marked thus  $\pi$  and concrete monuments marked thus  $\square$  are in place as shown hereon. I further certify that the requirements of Section 72A to 72D of the Annotated Code of Maryland (Title Clerk of Court-Subtitle Clerk of Circuit Court) as far as they relate to the marking of this plat and setting of markers have been complied with.

*Claude M. Skinner, Jr.*  
 Claude M. Skinner, Jr. Reg. Land Surveyor No. 2237



**REVISED MAP OF  
 LOTS NO. 25, 27, 28  
 PINE ORCHARD MEADOW  
 SECTION THREE  
 SECOND ELECTION DISTRICT OF HOWARD COUNTY  
 ELLICOTT CITY, MARYLAND  
 SCALE: 1 IN. = 100 FT. OCT. 1961**

**PLAT APPROVED  
 BY**

61 *Wilmer M. Sanner*  
 Wilmer M. Sanner, Chairman of Planning Commission

25-61 *Thomas G. Harris, Jr.*  
 Thomas G. Harris, Jr., Planning Director

31-61 *Herman S. O'Neill*  
 Herman S. O'Neill, County Roads Supervisor

*Paul W. Meyer*  
 Chief Engineer of the Metropolitan Commission

27

RECORDED PLAT BOOK 8 FOLIO 47A  
 ON Nov. 1 1961 AMONG THE LAND RECORDS OF  
 HOWARD COUNTY, M.D.

RECEIVED