

CURVE DATA						
No.	RADIUS	Δ	ARC	TAN	CHORD	L.C.B.
10	475.00	48°02'47"	398.32'	211.71'	386.75'	N 2°47'37.5"W

I, WILLIAM A. CASALE, PRESIDENT OF TOWN & RANCH HOME INC., A BODY CORPORATE OF THE STATE OF MARYLAND, OWNER OF THE PROPERTY SHOWN AND DESCRIBED HEREON, ADOPT THIS PLAN OF SUBDIVISION AND RESERVE THE FEE SIMPLE TITLE TO THE BEDS OF THE STREETS AND/OR ROADS SHOWN HEREON AND IN CONSIDERATION OF THE APPROVAL OF THIS PLAN BY THE PLANNING COMMISSION OF HOWARD COUNTY, I, OR ASSIGNS DO HEREBY GIVE AND GRANT INTO THE BOARD OF COUNTY COMMISSIONERS OF HOWARD COUNTY THE RIGHT AND OPTION TO ACQUIRE FOR THE CONSIDERATION OF ONE DOLLAR THE FEE SIMPLE TITLE TO THE BEDS OF THE STREETS AND/OR ROADS SHOWN HEREON, WITHIN THE PERIOD OF FIVE YEARS FROM THE DATE OF THE RECORDING OF THIS PLAN AMONG THE LAND RECORDS OF HOWARD COUNTY.

WITNESS MY HAND AND SEAL THIS 20TH DAY OF SEPTEMBER 1961.

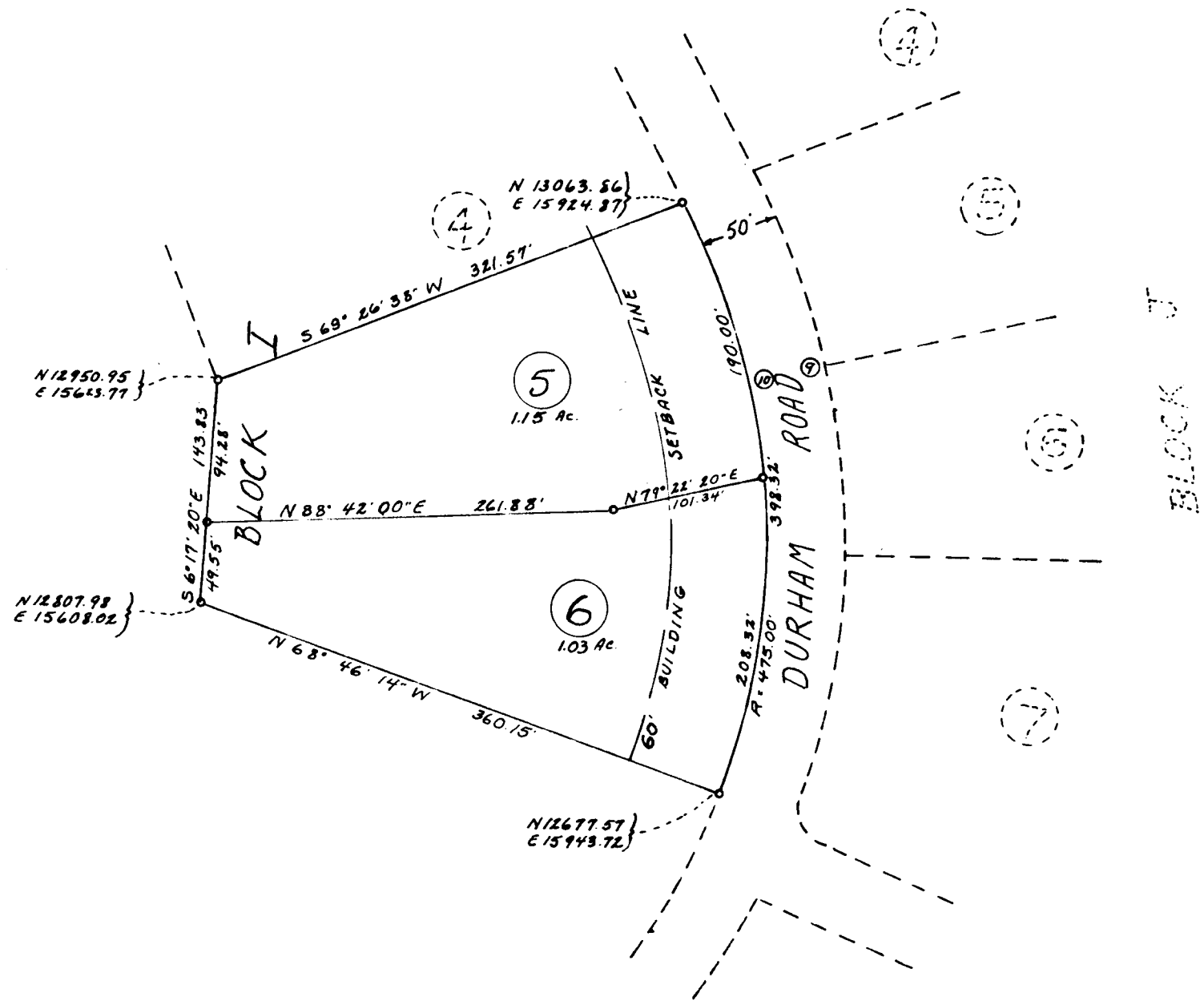
William A. Casale
WILLIAM A. CASALE PRES., TOWN & RANCH HOMES, INC.

I HEREBY CERTIFY THAT THIS PLAT REPRESENTS A SUBDIVISION OF LAND MADE BY ME, THAT ALL MARKERS SHOWN THEREON ACTUALLY EXIST, THAT THEIR LOCATION, SIZE AND MATERIAL ARE CORRECTLY SHOWN IN ACCORDANCE WITH SECTIONS 59A TO 6E OF ARTICLE 17 OF THE ANNOTATED CODE OF MARYLAND 1957, AS AMENDED 1959.

Engene F. Raphael 9-19-61
ENGENE F. RAPHAEL, REGISTERED SURVEYOR No. 2246 DATE

MARKER LEGEND:
• INDICATES EXISTING 1/8" O.D. IRON PIPE

COORDINATES SHOWN HEREON ARE ASSUMED AND BASED ON THE COORDINATES OF THE FINAL SUBDIVISION PLAT DATED SEPT. 1958 SHOWING THESE TWO LOTS AS ORIGINALLY LAYED OUT.



RECEIVED
SEP 20 1961
HOWARD COUNTY
PLANNING COMMISSION
PB 8 F 43

APPROVED	DATE
<u>Wilhelm D. Janner</u> CHAIRMAN, PLANNING COMMISSION	9-29-61
<u>Thomas J. Harris, Jr.</u> DIRECTOR, PLANNING COMMISSION	9-29-61
<u>Fleming S. Meill</u> COUNTY ROADS SUPERINTENDENT	9-29-61
<u>Carl W. Meyer</u> CHIEF ENGINEER, METROPOLITAN DISTRICT	9-29-61

PLAT BOOK 8 FOLIO 43
RECORDED
OCT 3 1961
H.C. 2246

RESUBDIVISION PLAT
REVISION TO LOTS 546 BLOCK I SECTION III
BEAVERBROOK
FIFTH ELECTION DISTRICT HOWARD COUNTY, MARYLAND
SCALE: 1" = 100' DRAWG NO. E59-1-13
DATE: SEPT. 20TH 1961
MULLER, RAPHAEL & ASSOCIATES, INC.
ENGINEERS & SURVEYORS
9 COURT AVE. - ELLICOTT CITY, MARYLAND.