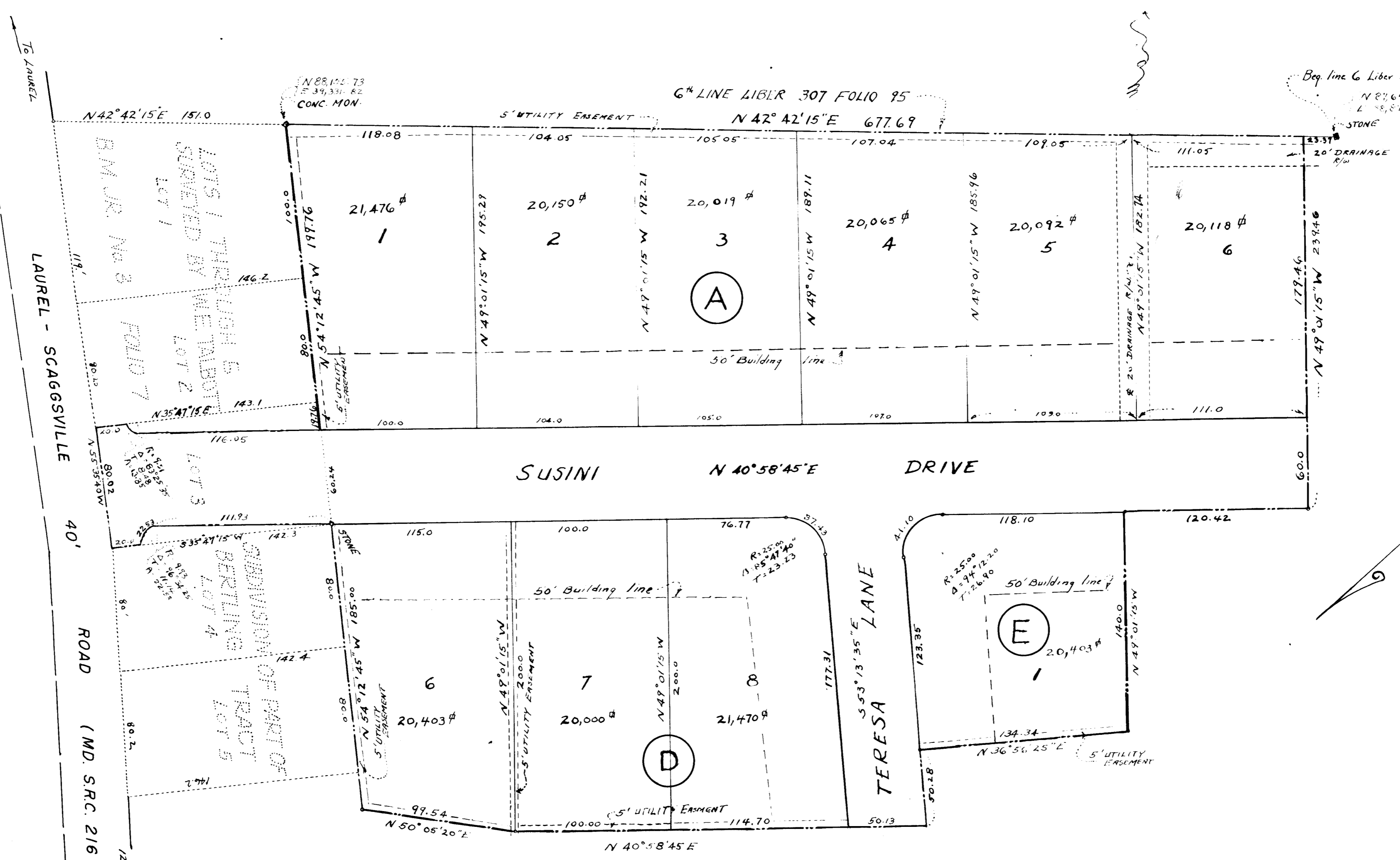


F.S.P.-130



**OWNERS DEDICATION**

We, Harry M. Susini and Harry A. Susini, copartners, trading as Laurel Investment Company, owners of the property shown and described hereon, adopt this plan of subdivision and reserve the fee simple title to the beds of the streets and/or roads shown hereon, and in consideration of the approval of this plat by the Planning Commission of Howard County, we for ourselves, our heirs or assigns do hereby give and grant unto the Board of County Commissioners of Howard County the right and option to acquire for the consideration of One Dollar, the fee simple title to the beds of the streets and/or roads shown hereon, within the period of five years from the date of the recording of this plat among the Land Records of Howard County.

"Witness our hands and seals this 22<sup>nd</sup> day of JUNE 1959"

Witness:  
*Vinton D. Cockey*  
*Harry M. Susini*  
*Vinton D. Cockey*  
*Harry A. Susini*

**ENGINEER'S CERTIFICATE**

I hereby certify that the plan shown hereon is correct; that it is a subdivision of part of the land conveyed by: Mary L. Bertling, widow to Harry M. Susini and Harry A. Susini by deed dated Dec. 31, 1957 recorded in Liber RHM 307 at Folio 95 and by confirmatory deed dated Dec. 9, 1958 to Harry M. Susini and Harry A. Susini, copartners trading as Laurel Investment Company recorded in Liber RHM 325 at Folio 571 among the Land Records of Howard County, Maryland.

I further certify that iron pipes shown thus and stones shown thus are in place as shown and that the total area included in this plan of subdivision is 5.98 acres.

JUNE 22, 1959.

*Vinton D. Cockey*  
 Vinton D. Cockey  
 Reg. Engineer & Land Surveyor  
 Maryland No. 4

**SECTION ONE LAKEVIEW**

SOUTH SIDE-ROUTE 216  
 TWO MILES N.W. OF LAUREL

SIXTH DISTRICT, HOWARD CO.-MD.  
 SCALE 1"=50' JUNE 1959

OFFICE OF  
 VINTON D. COCKEY  
 REGISTERED ENGINEER & L.S.  
 LAUREL, MD.

PLAT BOOK-7 Folio -51

LAUREL INVESTMENT CO.  
 111 9<sup>TH</sup> ST, LAUREL, MD.

**HOWARD COUNTY HIGHWAYS DEPT.**

APPROVED \_\_\_\_\_

SUPERVISOR \_\_\_\_\_ DATE \_\_\_\_\_

**HOWARD CO. PLANNING COMMISSION**

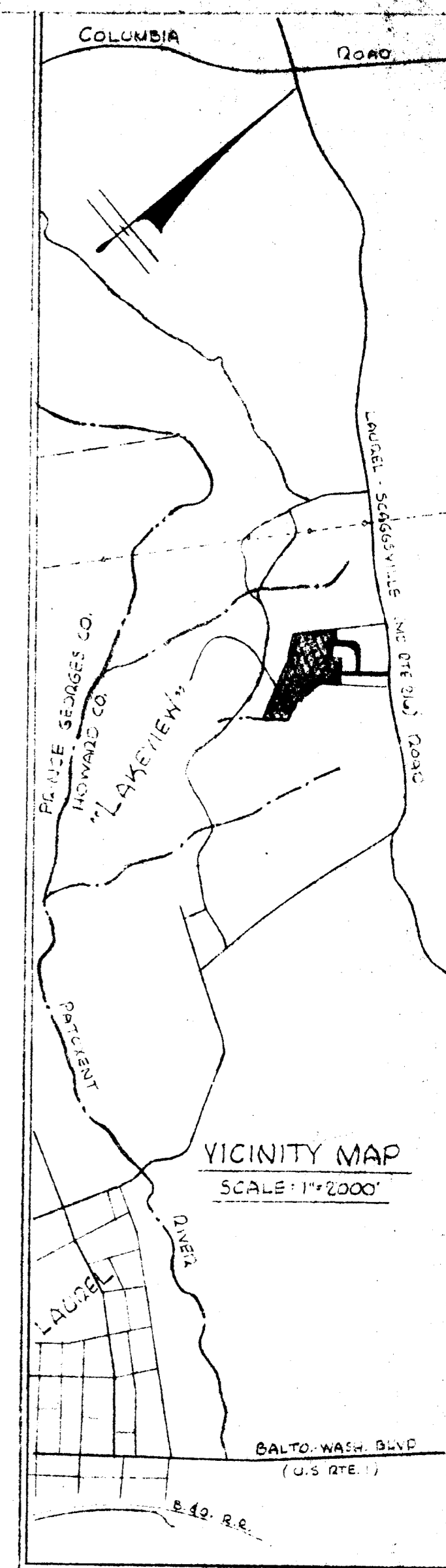
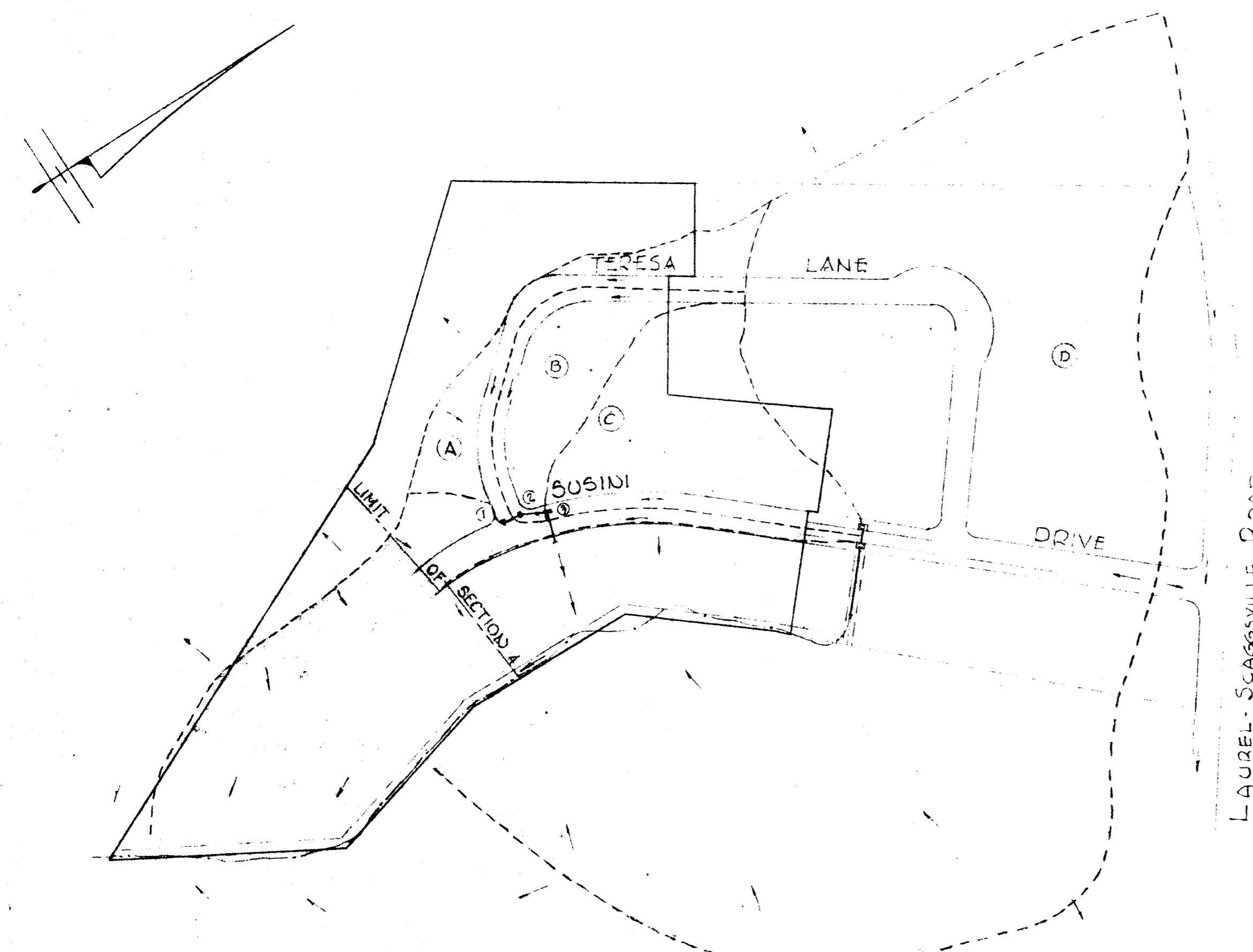
APPROVED \_\_\_\_\_

Chairman \_\_\_\_\_ Date \_\_\_\_\_

Director \_\_\_\_\_ Date \_\_\_\_\_

F.S.P. 130

AREA NO.	REMARKS	INCR. AREA	TOTAL AREA	C	C.A.	ACCUM. C.A.	TIME CONCEN.	I in./hr.	Q c.f.s.	PIPE SIZE	SLOPE%		VEL. ft.	TIME IN PIPE
											MIN	ACT.		
A		1.8		0.40	0.72		13	5.3	3.8	17"	0.5%	0.7%	3.9	35
B		2.1		0.40	0.84		13	5.3	4.5					
A-B			4.0	0.40		1.60	13	5.3	8.5	17"	0.7%	1.0%	4.5	44
C		3.6		0.40	1.44		15	5.0	7.2					
A-C			7.6	0.40		3.04	15	5.0	15.2	21"	1.1%	1.3%	6.7	60
D		37.6		0.40	15.04		20	4.4	66.2					
A-D			45.2	0.40		18.08	20	4.4	79.6					



INLET NO.	AREA AC	TIME CONCEN.	I in./hr.	C	C.A.	Q c.f.s.	STREET SLOPE	INLET TYPE	INLET CAP.	REMARKS
1	1.8	13	5.3	0.40	0.72	3.8	2.20	K		AREA 'A'
2	2.1	13	5.3	0.40	0.84	4.5	2.20	K		AREA 'B'
3	3.6	15	5.0	0.40	1.44	7.2	2.20	Dble 'E' Comb.	12	AREA 'C'

REVISED  
 PLANNING COMMISSION  
 OF HOWARD COUNTY  
 DATE 12/2/62

PURDUM & JESCHKE  
 ENGINEERS  
 22 PARK AVENUE - ELLICOTT CITY - MD.

STORM DRAINAGE AREA MAP  
 "LAKEVIEW"  
 6th ELECTION DISTRICT - HOWARD COUNTY - MARYLAND  
 JANUARY 22, 1963  
 PLAN SCALE: 1"=200'