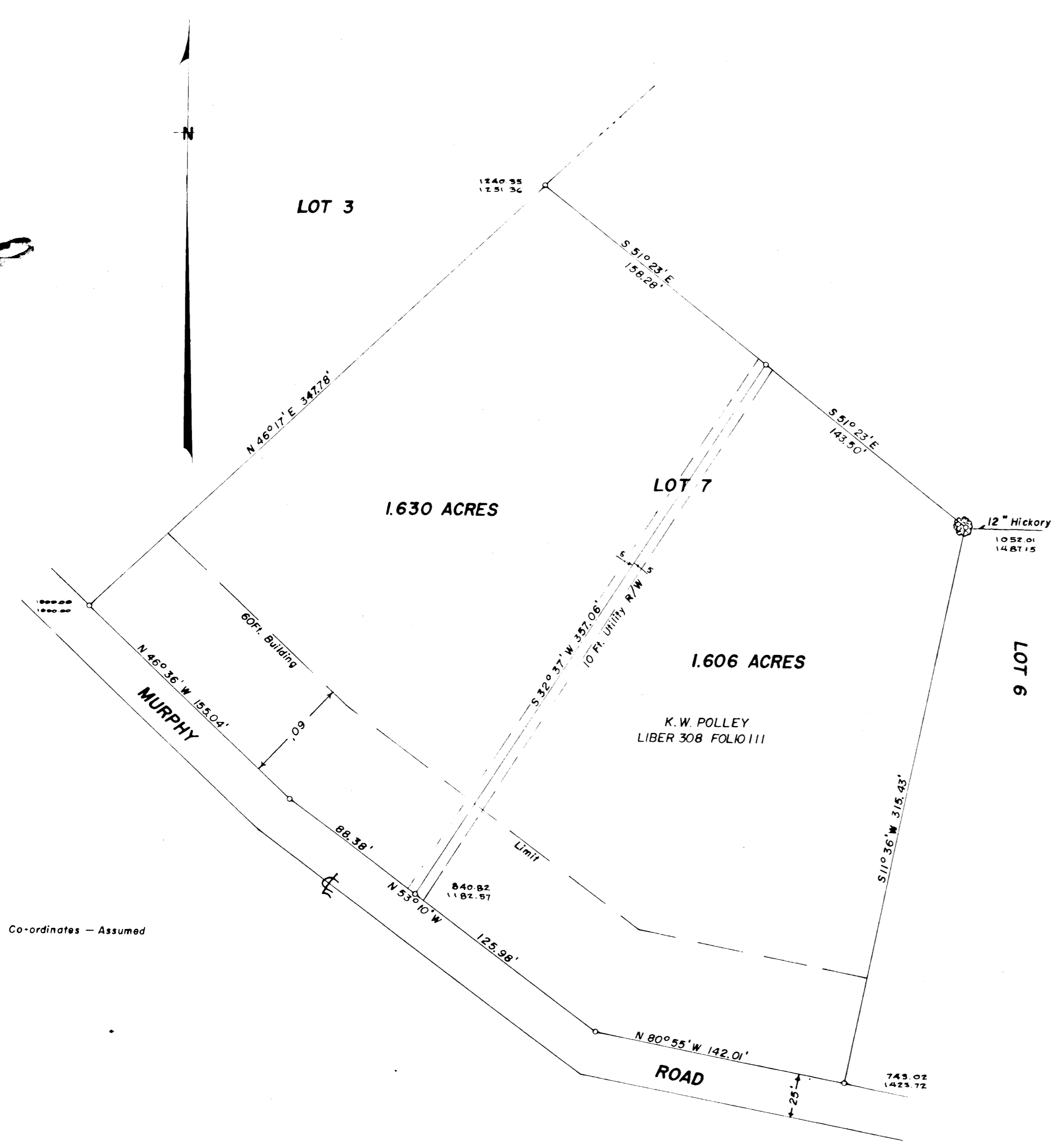


300



Co-ordinates - Assumed

OWNERS DEDICATION

We, Ella P. Kruhm and Frederick W. Kruhm her husband, owners of property shown and described hereon, adopt this plan of subdivision and reserve the fee simple title to the beds of the streets and/or roads shown hereon and in consideration of the approval of this plat by the Planning Commission of Howard County, we ourselves, our heirs or assigns do hereby give and grant unto the Board of County Commissioners of Howard County the right and option to acquire for the consideration of One Dollar the fee simple title to the beds of the street and/or roads shown hereon, within the period of Five years from the date of recording of this plat among the Land Records of Howard County.

Witness our hands and seals this day of September 1958

Ella P. Kruhm
 Ella P. Kruhm (individually and under power of Attorney from Albin F. Payne and wife)

Frederick W. Kruhm
 Frederick W. Kruhm

ENGINEERS CERTIFICATE

I hereby certify that the plan shown hereon is correct, that it is a subdivision of a part of the land which by deed dated August 18, 1942 and recorded among the Land Records of Howard County in Liber No. 175, Folio 490 etc. was granted and conveyed by Ida E. Murphy et al to Willie L. Payne et al, and that iron pipes marked thus are in place and concrete monuments marked thus are in place as shown hereon.

I further certify that the requirements of Section 72A to 72D of the Annotated Code of Maryland, Acts of 1951 (Title Clerk of Court Subtitle Clerk of Circuit Court), as far as they relate to the marking of this plat and the setting of markers have been complied with.

Claude M. Skinner Jr.
 Claude M. Skinner Jr. Reg. Engineer and Land Surveyor No. 2237

MAP OF
 RESUBDIVISION OF LOT NO 7
 OF
 ALBIN F. & SARAH E. PAYNE PROPERTY
 FIFTH ELECTION DISTRICT OF HOWARD COUNTY
 FULTON, MARYLAND
 SCALE: 1 IN. = 50 FT. SEPTEMBER, 1958

APPROVED
 PLANNING COMMISSION
 OF HOWARD COUNTY

DATE 10/1/58
 PER 20

PLAT BOOK 6 Folio 69

Herman O'Hille 4/6/60

Monitor Subdivision

Final recorded on 4/6/60

PLAT APPROVED BY

Date Wilmer M. Sanner, Chairman of Planning Commission

Date Eugene Wheeler Planning Commission

Date Herman O'Neill County Roads Supervisor

300

F.S.P. 3166