

F.S.P-29

CURVE DATA						CURVE DATA						CURVE DATA					
No.	RADIUS	LENGTH	TANGENT	Δ	CHORD BEG. CH. DIS.	No.	RADIUS	LENGTH	TANGENT	Δ	CHORD BEG. CH. DIS.	No.	RADIUS	LENGTH	TANGENT	Δ	CHORD BEG. CH. DIS.
7-8	144.04	105.50	55.20	42°00'00"	528.30 00 W 105.24	23-24	144.04	105.50	55.20	42°00'00"	528.30 00 W 105.24	45-46	144.04	105.50	55.20	42°00'00"	528.30 00 W 105.24
8-9	25.00	39.27	25.00	90°00'00"	542°30'00 E 35.56	24-25	25.00	39.27	25.00	90°00'00"	542°30'00 E 35.56	46-47	25.00	39.27	25.00	90°00'00"	542°30'00 E 35.56
9-10	25.00	39.27	25.00	90°00'00"	247°30'00 W 35.56	25-26	25.00	39.27	25.00	90°00'00"	247°30'00 W 35.56	47-48	25.00	39.27	25.00	90°00'00"	247°30'00 W 35.56
10-11	25.00	39.27	25.00	90°00'00"	309°30'00 W 112.12	26-27	25.00	39.27	25.00	90°00'00"	309°30'00 W 112.12	48-49	25.00	39.27	25.00	90°00'00"	309°30'00 W 112.12
11-12	25.00	39.27	25.00	90°00'00"	309°30'00 W 112.12	27-28	25.00	39.27	25.00	90°00'00"	309°30'00 W 112.12	49-50	25.00	39.27	25.00	90°00'00"	309°30'00 W 112.12
12-13	460.00	112.40	56.45	14°00'00"	509°30'00 W 112.12	28-29	460.00	112.40	56.45	14°00'00"	509°30'00 W 112.12	50-51	460.00	112.40	56.45	14°00'00"	509°30'00 W 112.12
13-14	460.00	112.40	56.45	14°00'00"	509°30'00 W 112.12	29-30	460.00	112.40	56.45	14°00'00"	509°30'00 W 112.12	51-52	460.00	112.40	56.45	14°00'00"	509°30'00 W 112.12
14-15	460.00	112.40	56.45	14°00'00"	509°30'00 W 112.12	30-31	460.00	112.40	56.45	14°00'00"	509°30'00 W 112.12	52-53	460.00	112.40	56.45	14°00'00"	509°30'00 W 112.12
15-16	460.00	112.40	56.45	14°00'00"	509°30'00 W 112.12	31-32	460.00	112.40	56.45	14°00'00"	509°30'00 W 112.12	53-54	460.00	112.40	56.45	14°00'00"	509°30'00 W 112.12
16-17	25.00	39.27	25.00	90°00'00"	327°51'50 E 35.56	32-33	25.00	39.27	25.00	90°00'00"	327°51'50 E 35.56	54-55	25.00	39.27	25.00	90°00'00"	327°51'50 E 35.56
17-18	25.00	39.27	25.00	90°00'00"	327°51'50 E 35.56	33-34	25.00	39.27	25.00	90°00'00"	327°51'50 E 35.56	55-56	25.00	39.27	25.00	90°00'00"	327°51'50 E 35.56
18-19	25.00	39.27	25.00	90°00'00"	327°51'50 E 35.56	34-35	25.00	39.27	25.00	90°00'00"	327°51'50 E 35.56	56-57	25.00	39.27	25.00	90°00'00"	327°51'50 E 35.56
19-20	25.00	39.27	25.00	90°00'00"	327°51'50 E 35.56	35-36	25.00	39.27	25.00	90°00'00"	327°51'50 E 35.56	57-58	25.00	39.27	25.00	90°00'00"	327°51'50 E 35.56
20-21	25.00	39.27	25.00	90°00'00"	327°51'50 E 35.56	36-37	25.00	39.27	25.00	90°00'00"	327°51'50 E 35.56	58-59	25.00	39.27	25.00	90°00'00"	327°51'50 E 35.56
21-22	25.00	39.27	25.00	90°00'00"	327°51'50 E 35.56	37-38	25.00	39.27	25.00	90°00'00"	327°51'50 E 35.56	59-60	25.00	39.27	25.00	90°00'00"	327°51'50 E 35.56
22-23	25.00	39.27	25.00	90°00'00"	327°51'50 E 35.56	38-39	25.00	39.27	25.00	90°00'00"	327°51'50 E 35.56	60-61	25.00	39.27	25.00	90°00'00"	327°51'50 E 35.56
23-24	25.00	39.27	25.00	90°00'00"	327°51'50 E 35.56	39-40	25.00	39.27	25.00	90°00'00"	327°51'50 E 35.56	61-62	25.00	39.27	25.00	90°00'00"	327°51'50 E 35.56
24-25	25.00	39.27	25.00	90°00'00"	327°51'50 E 35.56	40-41	25.00	39.27	25.00	90°00'00"	327°51'50 E 35.56	62-63	25.00	39.27	25.00	90°00'00"	327°51'50 E 35.56
25-26	25.00	39.27	25.00	90°00'00"	327°51'50 E 35.56	41-42	25.00	39.27	25.00	90°00'00"	327°51'50 E 35.56	63-64	25.00	39.27	25.00	90°00'00"	327°51'50 E 35.56
26-27	25.00	39.27	25.00	90°00'00"	327°51'50 E 35.56	42-43	25.00	39.27	25.00	90°00'00"	327°51'50 E 35.56	64-65	25.00	39.27	25.00	90°00'00"	327°51'50 E 35.56
27-28	25.00	39.27	25.00	90°00'00"	327°51'50 E 35.56	43-44	25.00	39.27	25.00	90°00'00"	327°51'50 E 35.56	65-66	25.00	39.27	25.00	90°00'00"	327°51'50 E 35.56

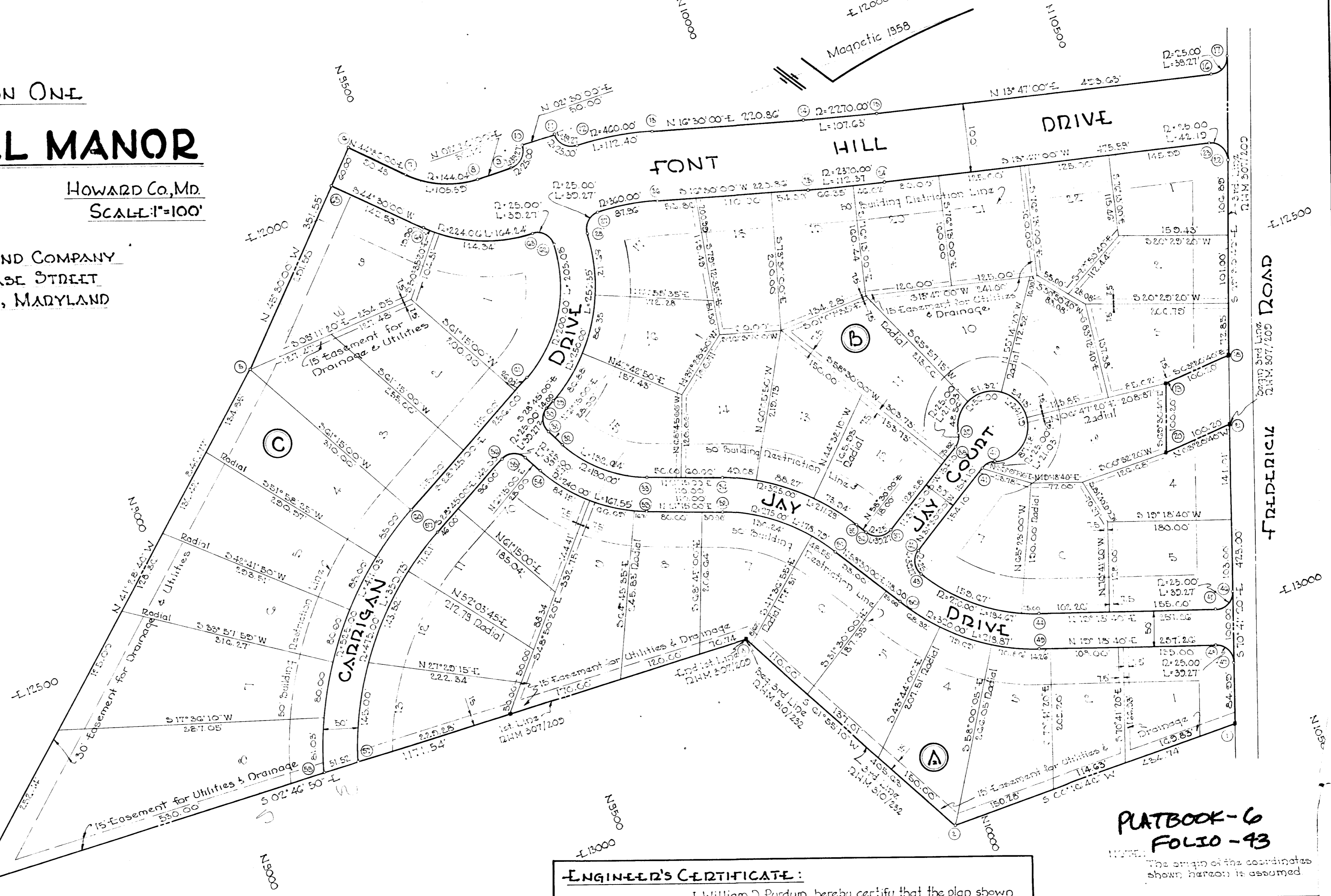
SECTION ONE

FONT HILL MANOR

2ND ELEC. DIST. HOWARD CO., MD.
FEBRUARY, 1958 SCALE: 1"=100'

FONT HILL LAND COMPANY
11 EAST CHASE STREET
BALTIMORE 2, MARYLAND

No.	NORTH	EAST	No.	NORTH	EAST
1	10701.16	15145.95	24	9825.90	12582.18
2	9935.45	13141.51	25	9081.12	10685.07
3	9075.72	11725.05	26	8374.52	9270.62
4	8325.21	10727.00	27	7774.52	8270.62
5	7725.00	10025.00	28	7274.52	7270.62
6	7225.00	9270.62	29	6874.52	6270.62
7	6825.00	8270.62	30	6474.52	5270.62
8	6425.00	7270.62	31	6074.52	4270.62
9	6025.00	6270.62	32	5674.52	3270.62
10	5625.00	5270.62	33	5274.52	2270.62
11	5225.00	4270.62	34	4874.52	1270.62
12	4825.00	3270.62	35	4474.52	270.62
13	4425.00	2270.62	36	4074.52	270.62
14	4025.00	1270.62	37	3674.52	270.62
15	3625.00	270.62	38	3274.52	270.62
16	3225.00	270.62	39	2874.52	270.62
17	2825.00	270.62	40	2474.52	270.62
18	2425.00	270.62	41	2074.52	270.62
19	2025.00	270.62	42	1674.52	270.62
20	1625.00	270.62	43	1274.52	270.62
21	1225.00	270.62	44	874.52	270.62
22	825.00	270.62	45	474.52	270.62
23	425.00	270.62	46	74.52	270.62
24	74.52	270.62	47	270.62	270.62
25	270.62	270.62	48	270.62	270.62
26	270.62	270.62	49	270.62	270.62
27	270.62	270.62	50	270.62	270.62
28	270.62	270.62	51	270.62	270.62
29	270.62	270.62	52	270.62	270.62
30	270.62	270.62	53	270.62	270.62
31	270.62	270.62	54	270.62	270.62
32	270.62	270.62	55	270.62	270.62
33	270.62	270.62	56	270.62	270.62
34	270.62	270.62	57	270.62	270.62
35	270.62	270.62	58	270.62	270.62
36	270.62	270.62	59	270.62	270.62
37	270.62	270.62	60	270.62	270.62
38	270.62	270.62	61	270.62	270.62
39	270.62	270.62	62	270.62	270.62
40	270.62	270.62	63	270.62	270.62
41	270.62	270.62	64	270.62	270.62
42	270.62	270.62	65	270.62	270.62
43	270.62	270.62	66	270.62	270.62
44	270.62	270.62	67	270.62	270.62
45	270.62	270.62	68	270.62	270.62
46	270.62	270.62	69	270.62	270.62
47	270.62	270.62	70	270.62	270.62
48	270.62	270.62	71	270.62	270.62
49	270.62	270.62	72	270.62	270.62
50	270.62	270.62	73	270.62	270.62
51	270.62	270.62	74	270.62	270.62
52	270.62	270.62	75	270.62	270.62
53	270.62	270.62	76	270.62	270.62
54	270.62	270.62	77	270.62	270.62
55	270.62	270.62	78	270.62	270.62
56	270.62	270.62	79	270.62	270.62
57	270.62	270.62	80	270.62	270.62
58	270.62	270.62	81	270.62	270.62
59	270.62	270.62	82	270.62	270.62
60	270.62	270.62	83	270.62	270.62
61	270.62	270.62	84	270.62	270.62
62	270.62	270.62	85	270.62	270.62
63	270.62	270.62	86	270.62	270.62
64	270.62	270.62	87	270.62	270.62
65	270.62	270.62	88	270.62	270.62
66	270.62	270.62	89	270.62	270.62
67	270.62	270.62	90	270.62	270.62



PLATBOOK-6
FOLIO-43

ENGINEER'S CERTIFICATE:
I, William D. Purdum, hereby certify that the plan shown hereon is correct, that it is a subdivision of all of the land which by deed dated February 11, 1958 and recorded among the Land Records of Howard County, Maryland, in Liber 241M, 510 at Folio 232 was granted and conveyed by Georgey Rosenkrantz & Anna Rosenkrantz, his wife to Font Hill Land Company and that it is a subdivision of a part of the land which by deed dated November 15, 1957 and recorded among the Land Records of Howard County, Maryland, in Liber 241M, 507 at Folio 208 was granted and conveyed by Lisha Dicks Jones and Dargia Lucille Jones, his wife to Font Hill Land Company and that concrete monuments marked thereon are in place as shown.
I further certify that the requirements of Section 12b, Article 17 of the annotated Code of Maryland (as amended) as far as they relate to the making of this plat have been complied with.
William D. Purdum Feb. 3, 1958
241, No. 1992

PURDUM & LESCHKE
ENGINEERS
27 CHURCH ROAD
ELLCOTT CITY, MD.

APPROVED: HOWARD COUNTY PLANNING COM. CHAIRMAN DATE DIRECTOR DATE
APPROVED: *F.S.P-29*
ROADS ENGINEER DATE

OWNER'S CERTIFICATE:
We, Font Hill Land Company, owners of the property shown and described hereon, adopt this plan of subdivision and reserve the fee simple title to the beds of the streets and/or roads shown hereon and in cooperation of the plat by the Planning Commission of Howard County, we for ourselves, our heirs or assigns do hereby give and grant unto the Board of County Commissioners of Howard County the right and option to acquire for the consideration of One Dollar, the fee simple title to the beds of the streets and/or roads shown hereon within the period of five years from the date of the recording of this plat among the Land Records of Howard County.
Witness our hands and seals this 12th day of Feb. 1958.
William B. Purdum
PRESIDENT - FONT HILL LAND COMPANY