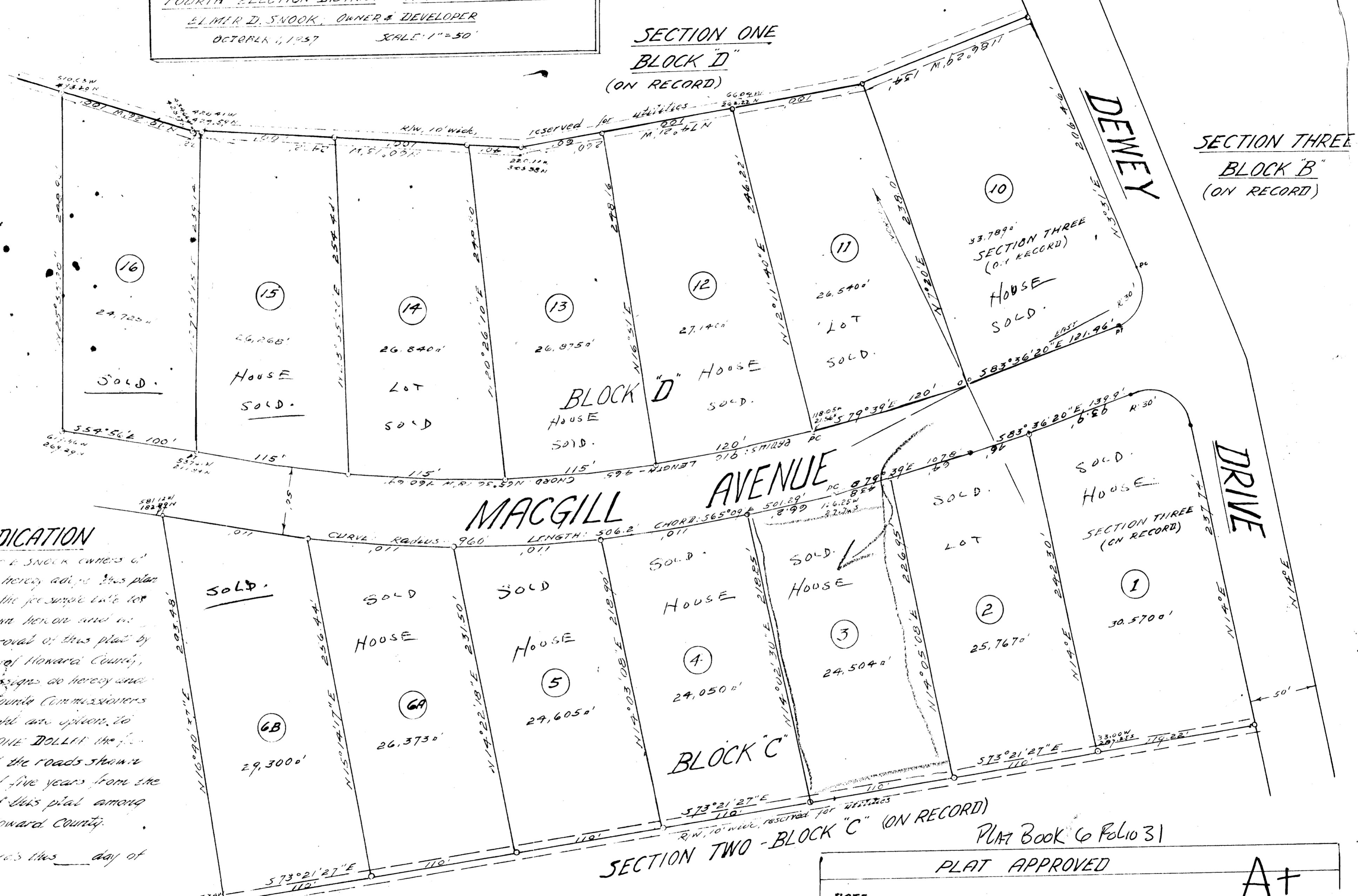


MAP OF SECTION FOUR ATHOLTON MANOR

FOURTH ELECTION DISTRICT HOWARD COUNTY, MD.
ELMER D. SNOOK, OWNER & DEVELOPER
OCTOBER 1, 1937 SCALE 1"=50'



OWNERS' DEDICATION

WE, ELMER D. SNOOK & FINN D. SNOOK OWNERS of the property shown herein hereby advise this plat of subdivision and reserve the fee simple title for the beds of the road shown herein and in consideration of the approval of this plat by the Planning Commission of Howard County, we, ourselves, our heirs, assigns, do hereby and grant unto the Board of County Commissioners of Howard County in right an option to acquire for the sum of ONE DOLLAR the fee simple title to the beds of the roads shown herein within a period of five years from the date of the recording of this plat among the Land Records of Howard County.

Witness our hands and seals this _____ day of October, 1937

ELMER D. SNOOK

FINN D. SNOOK

SEAL

SEAL

ENGINEERS' CERTIFICATE

This is to certify that the plan shown herein is correct and that the iron pipe marked thus \circ are in place where shown in accordance with Section 72 of Article 17 of the Annotated Code of Maryland, 1931 Supplement as amended.

October 1, 1937

Signed: *J. R. Curtis* P.E. & L.S. 16852
Elwood City, Md.

SECTION TWO - BLOCK "C" (ON RECORD)

PLAT BOOK 6 Folio 31

PLAT APPROVED

DATE _____	A+
APPROVED _____	Chairman of Planning Commission
PLANNING COMMISSION OF HOWARD COUNTY	
DATE <u>Oct. 15, 1937</u>	Planning Engineer
PER <i>Henry J. Rayburn</i>	Superintendent of Road
Howard County Planning Commission File # _____	