

MAP OF SECTION THREE ATHOLTON MANOR

FIFTH ELECTION DISTRICT, HOWARD COUNTY, MD

ELMER D. SNOOK, Owner & Developer

JANUARY, 1956 Scale: 1" = 50'

Elmer D. Snook
ELMER D. SNOOK

Anna E. Snook
ANNA E. SNOOK

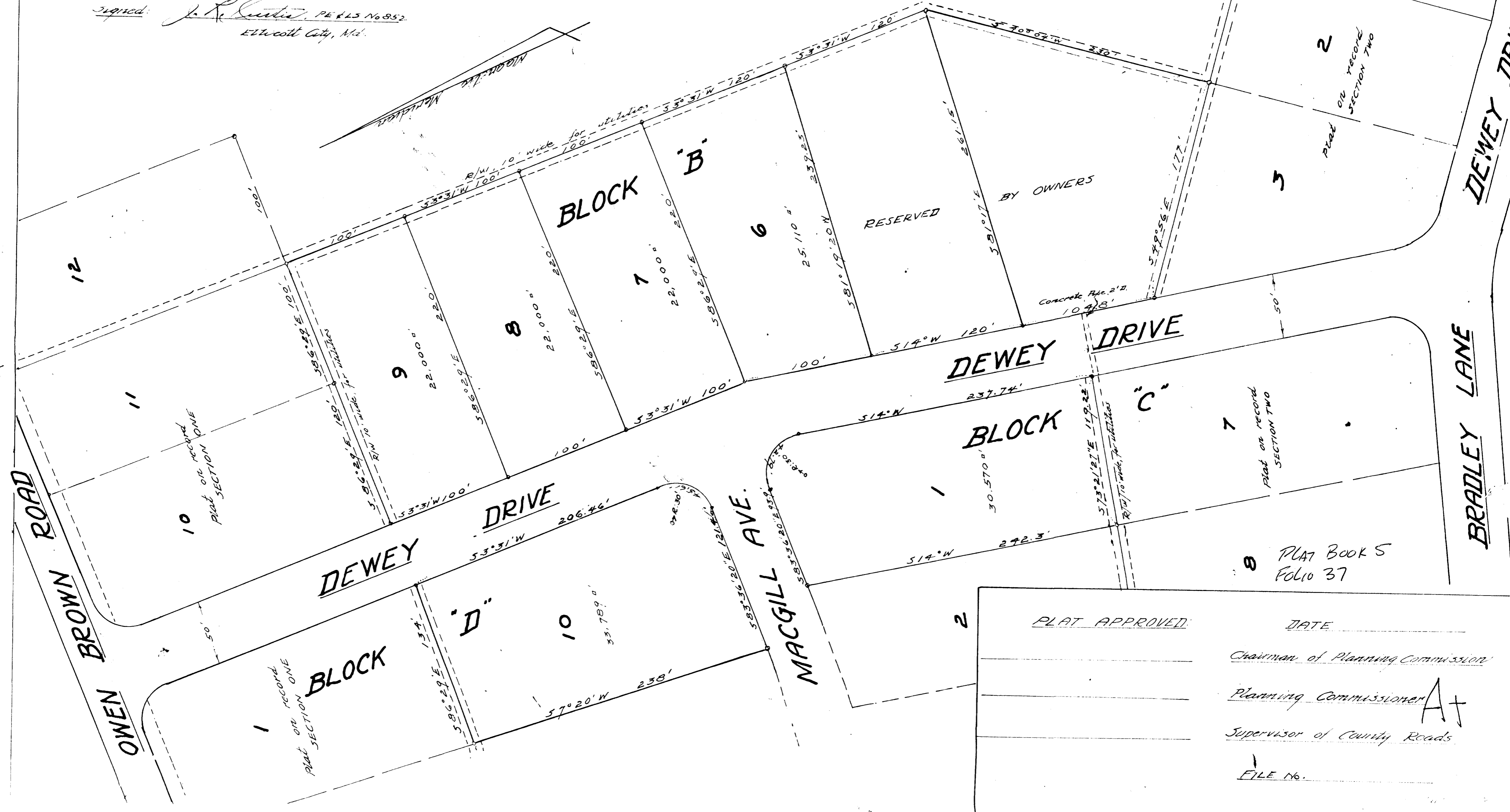
OWNERS

This is to certify that this is a plat of a survey made by me and that all monuments shown hereon, marked o, actually exist, and their size, location, and material are correctly shown in accordance with Section 72 of Article 17 of the Annotated Code of Maryland, 1951 Supplement.

Jan. 27, 1956

Signed: *J. R. Curtis*, PE #13 No. 852
Ellicott City, Md.

The roads shown hereon and the mention in the deeds are for description only and the same are intended for public use; the fee-simple title to the beds thereon is expressly reserved by the Grantors of the deeds to which this plat is attached, their heirs & assigns.



PLAT APPROVED: _____ DATE _____

Chairman of Planning Commission _____

Planning Commissioner *A* _____

Supervisor of County Roads _____

FILE NO. _____