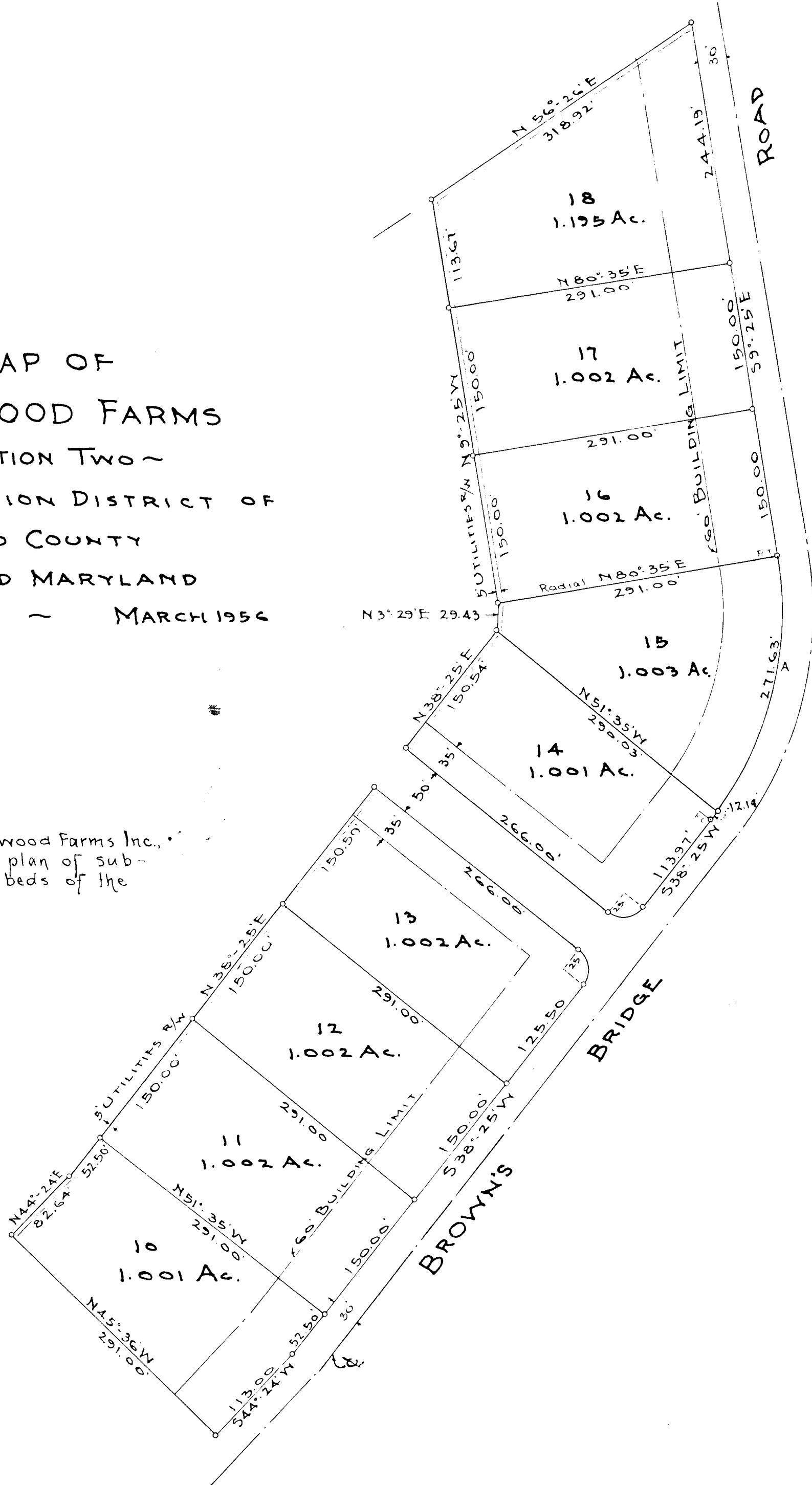




MAP OF  
GREENWOOD FARMS  
~ SECTION TWO ~  
FIFTH ELECTION DISTRICT OF  
HOWARD COUNTY  
HIGHLAND MARYLAND  
SCALE: 1"=100' ~ MARCH 1956



CURVE DATA						
CURVE	RADIUS	TAN. ARC.	CHORD BEARING			
A	340.00'	41° 43' 45"	150.77'	203.82'	275.64'	N14° 29' 50" E

ENGINEERS' CERTIFICATE

We hereby certify that the plan shown hereon is correct; that it is a subdivision of a part of the land, which by deed dated December 21, 1955 and recorded among the land records of Howard County in Liber R.H.M 277 folio 326 etc. was granted and conveyed by William H. H. Cecil et al to Greenwood Farms Inc, a body corporate of the State of Maryland, and that iron pipes marked thus "o" and concrete monuments marked thus "x" are in place as shown hereon.

We further certify that the requirements of Section 72-A to 72-D of the Annotated Code of Maryland (Title Clerk of Court-Subtitle Clerk of Circuit Court) as far as they relate to the marking of this plat and the setting of the markers, have been complied with.

*Claude M. Skinner, Jr.*  
Claude M. Skinner, Jr. Reg. Professional Engineer No. 2237.

*Guy B. Dukes*  
Guy B. Dukes, Reg. Professional Engr. and Land Surveyor No 1273

OWNERS DEDICATION

I, William A. Benjamin, President of Greenwood Farms Inc., owner of the property shown hereon, adopt this plan of subdivision and reserve the fee simple title to the beds of the streets and/or roads as shown hereon.

*William A. Benjamin*  
William A. Benjamin, President.

*Plan Book 5  
folio 28*

PLAT APPROVED	
BY	
Date	Wilmer Sanner, Chairman Planning Comm.
Date	Henri J. Raphael Jr, Planning Director
Date	Herman O'Neill, Co. Roads Supervisor