

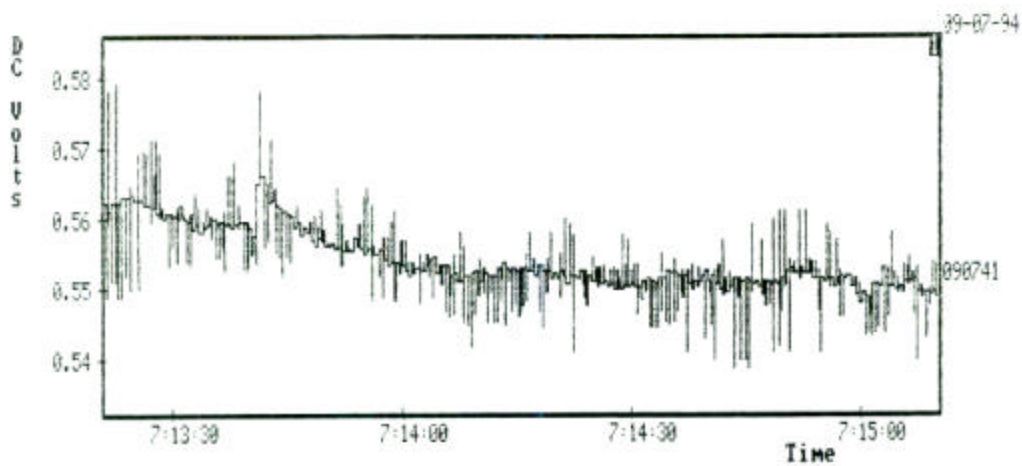
LOCATION MAP

Test Setup: DC volts between Cu/CuSO₄ and ARV-2; Cu/CuSO₄ 40'E of ARV-2.

Legend:

- Pipe Hookup
- Cu/CuSO₄ Electrode

Figure 11. Location Map for Site 4



Date: 9/7/94

Time: 1:20PM - 3:10PM

Stray Current Shifts: 0.12mA; (DC Potential Shifts - 42mV)

Current through Pipe: 1.56mA

Comments: Pipe hook up to ARV-2; Nearby Exxon service station

Figure 12. Current Interference Survey for Site 4

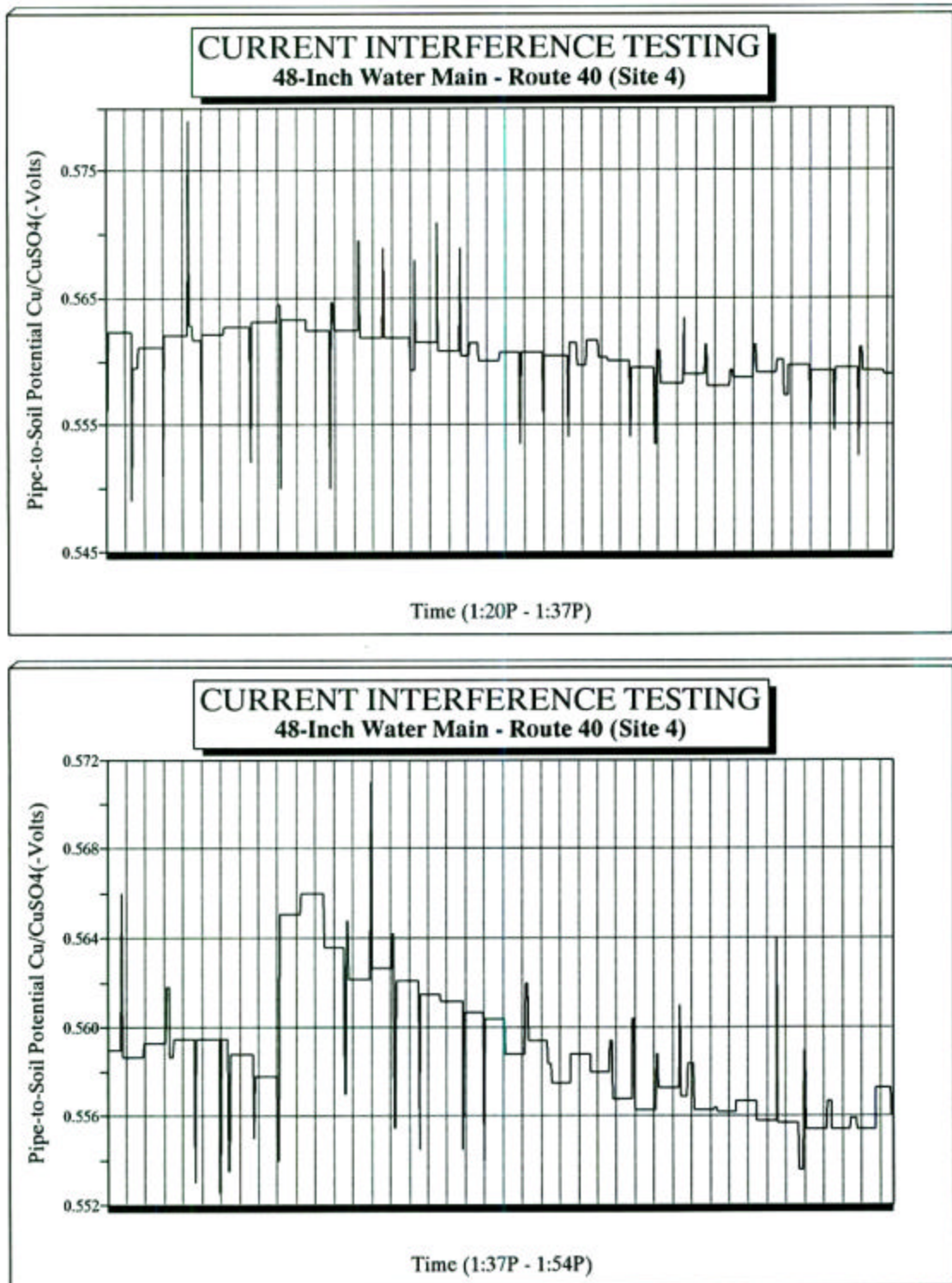


Figure 13. Detailed Current Interference Test Results for Site 4 from 1:20PM – 1:54PM

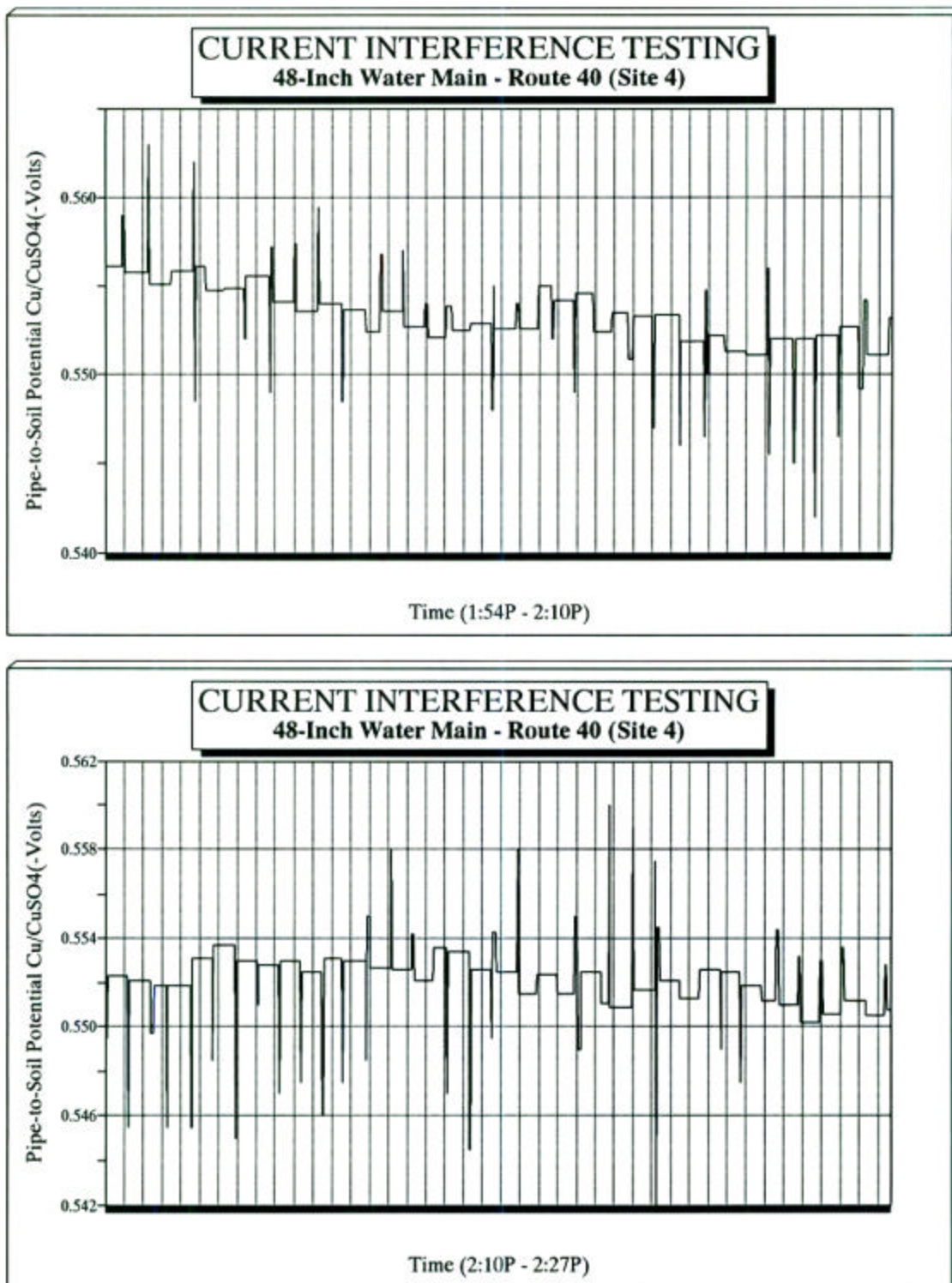


Figure 14. Detailed Current Interference Test Results for Site 4 from 1:54PM – 2:27PM

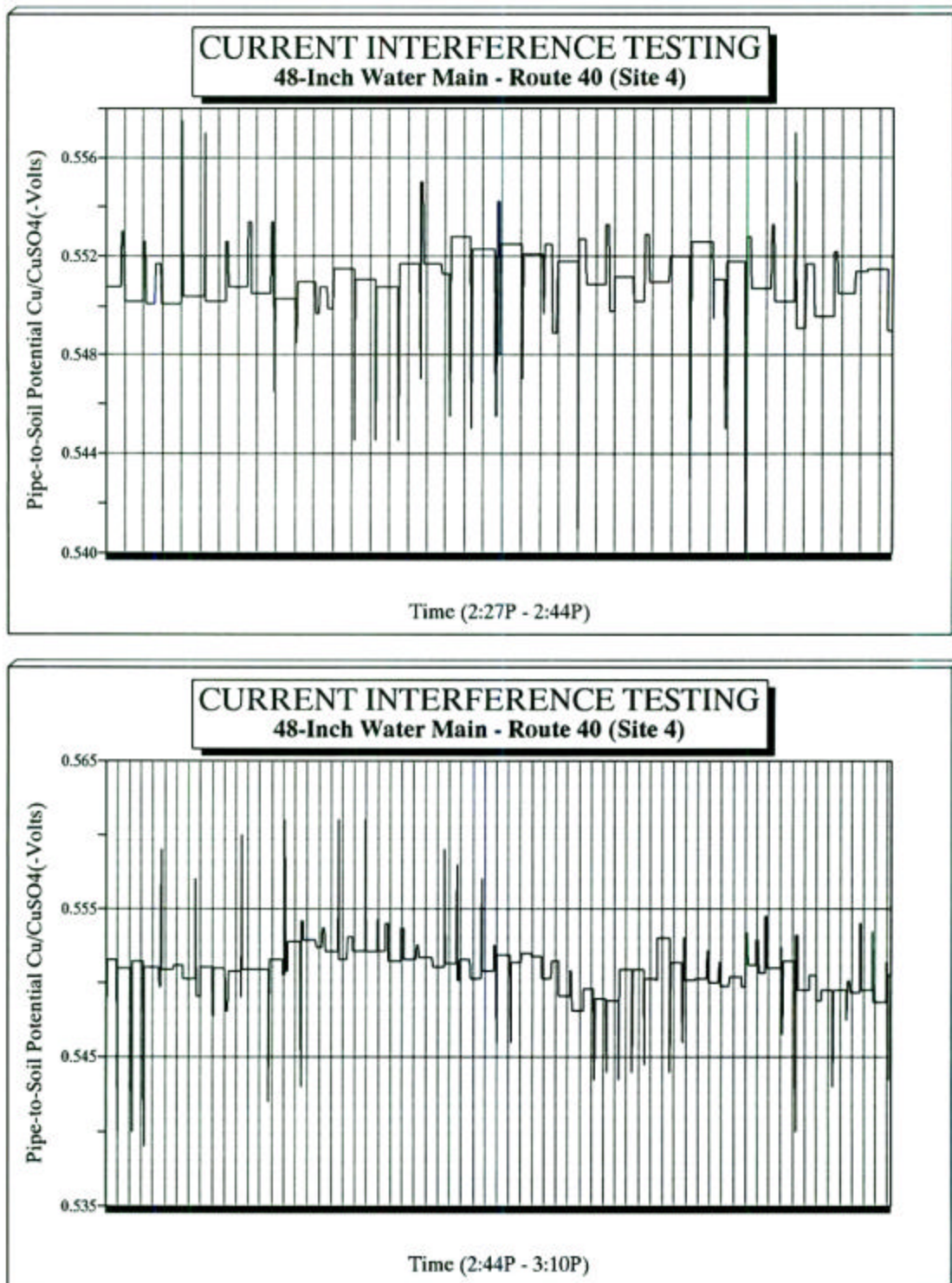


Figure 15. Detailed Current Interference Test Results for Site 4 from 2:27PM – 3:10PM