

Location:	Off of US Rt.1, opposite Ducketts Ln.	
GPS Location:	N 39° 11.705', W 76° 44.640'	
Output:	2.30 Volts / 1.30 Amps	
	North-South	East-West
Date:	7/11/2005	7/11/2005
Time:	12:14:45	12:14:45
Maximum (V):	0.39	0.22
Minimum (V):	-0.29	-0.22
DC Potential Shifts (V):	0.68	0.44

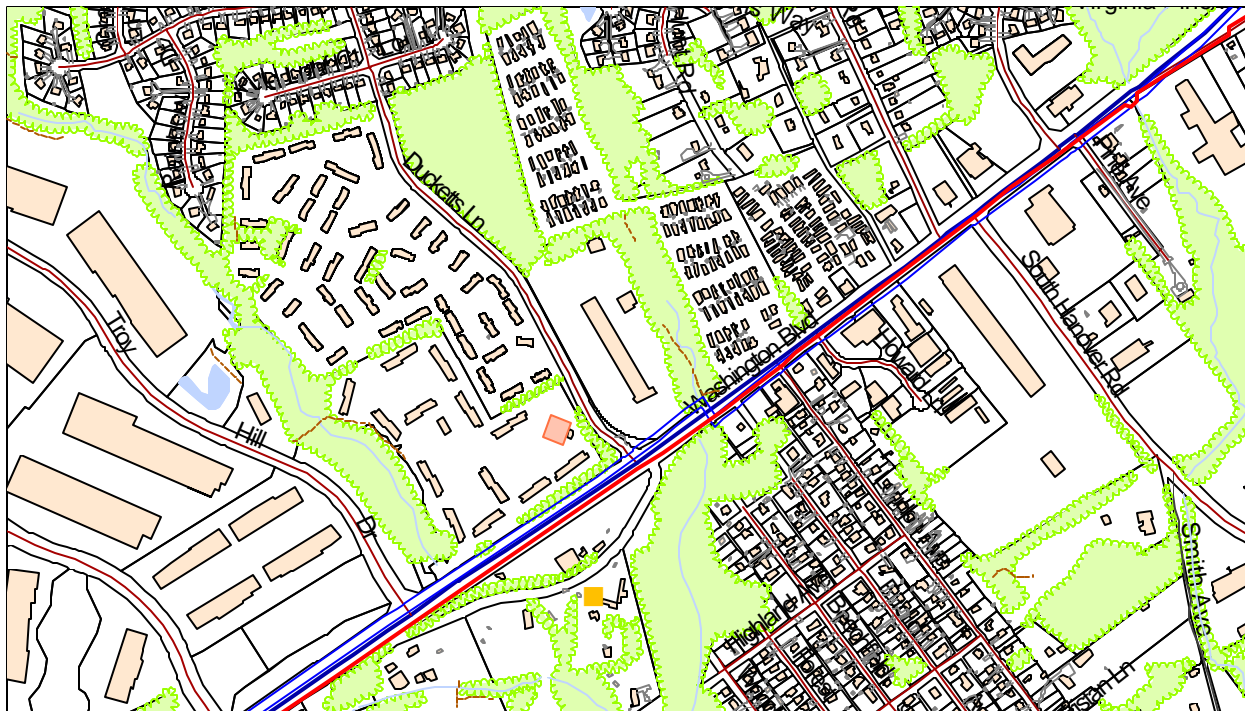


Figure 19 - Location of Impressed Current Rectifier BGE6



Figure 20 - Impressed Current Rectifier BGE6