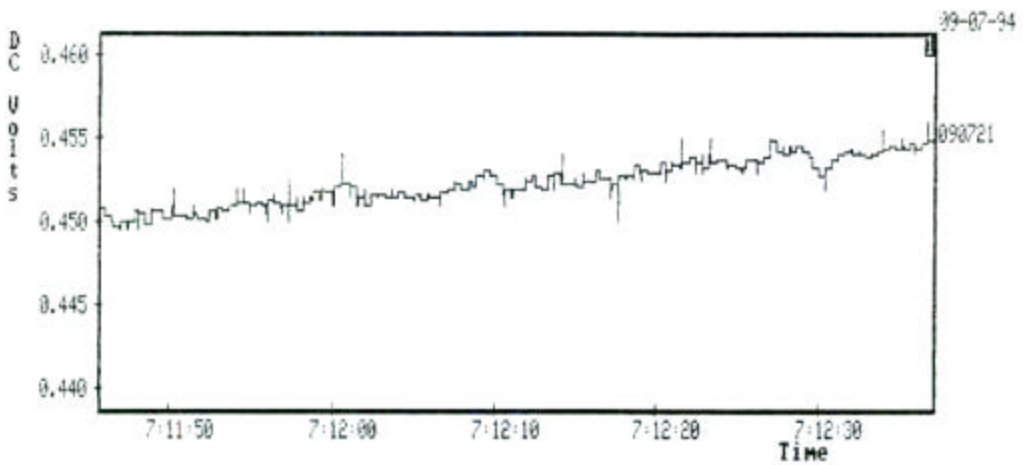
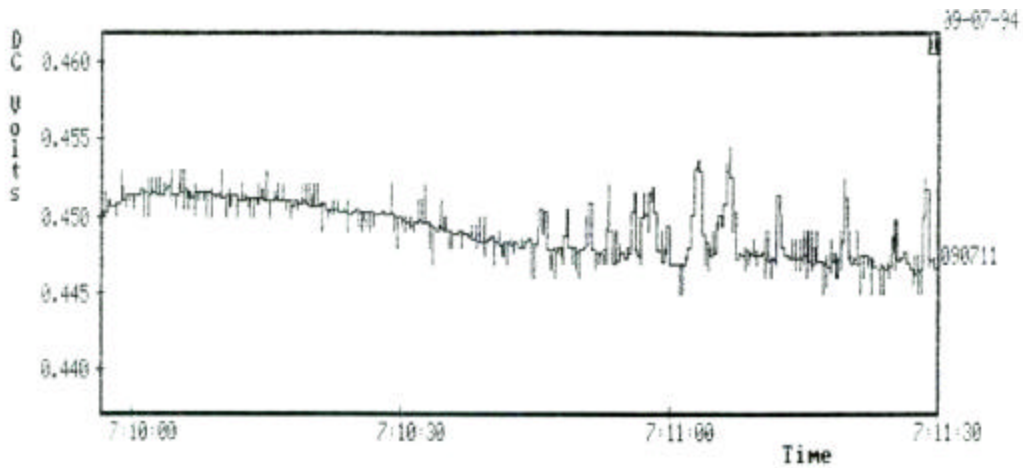


LOCATION MAP

Test Setup:	DC volts between ARV-1 and Cu/CuSO ₄ ; Session 1: Cu/CuSO ₄ 50'E of ARV-1; Session 2: Cu/CuSO ₄ 50'E and 13'N of ARV-1
Legend:	<ul style="list-style-type: none"> ● Pipe Hookup ● Cu/CuSO₄ Electrode

Figure 4. Location Map for Site 1



Date: 9/7/94

Time: 9:55AM - 12:40PM

Stray Current Shifts: 0.189 μ A; (DC Potential Shifts - 12mV)

Current through Pipe: 9.18mA

Comments: Very busy traffic intersections; nearby Amoco service station; O'Donnell car dealership

Figure 5. Current Interference Tests for Site 1

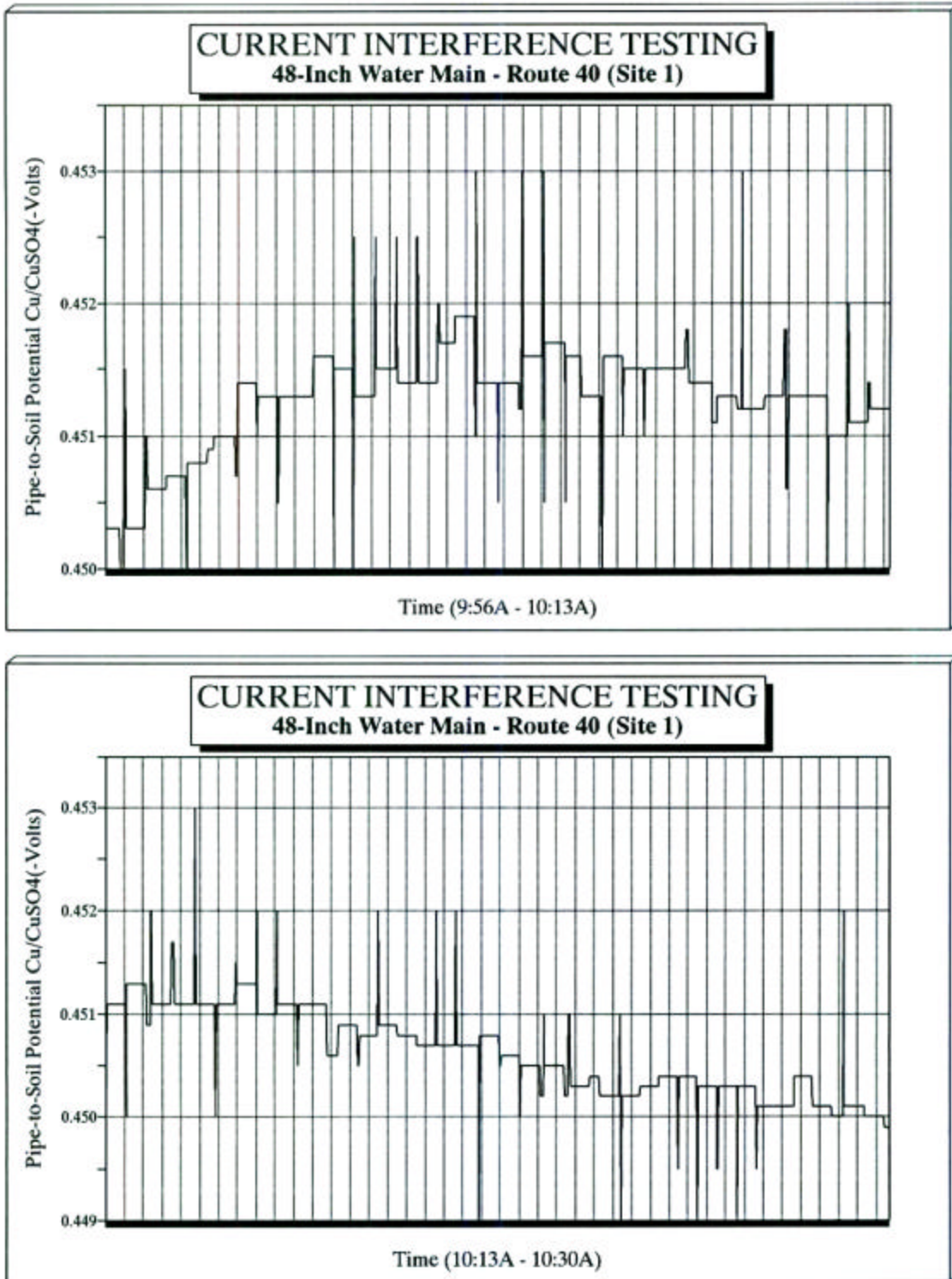


Figure 6. Detailed Current Interference Test Results for Site 1 from 9:56AM – 10:30AM

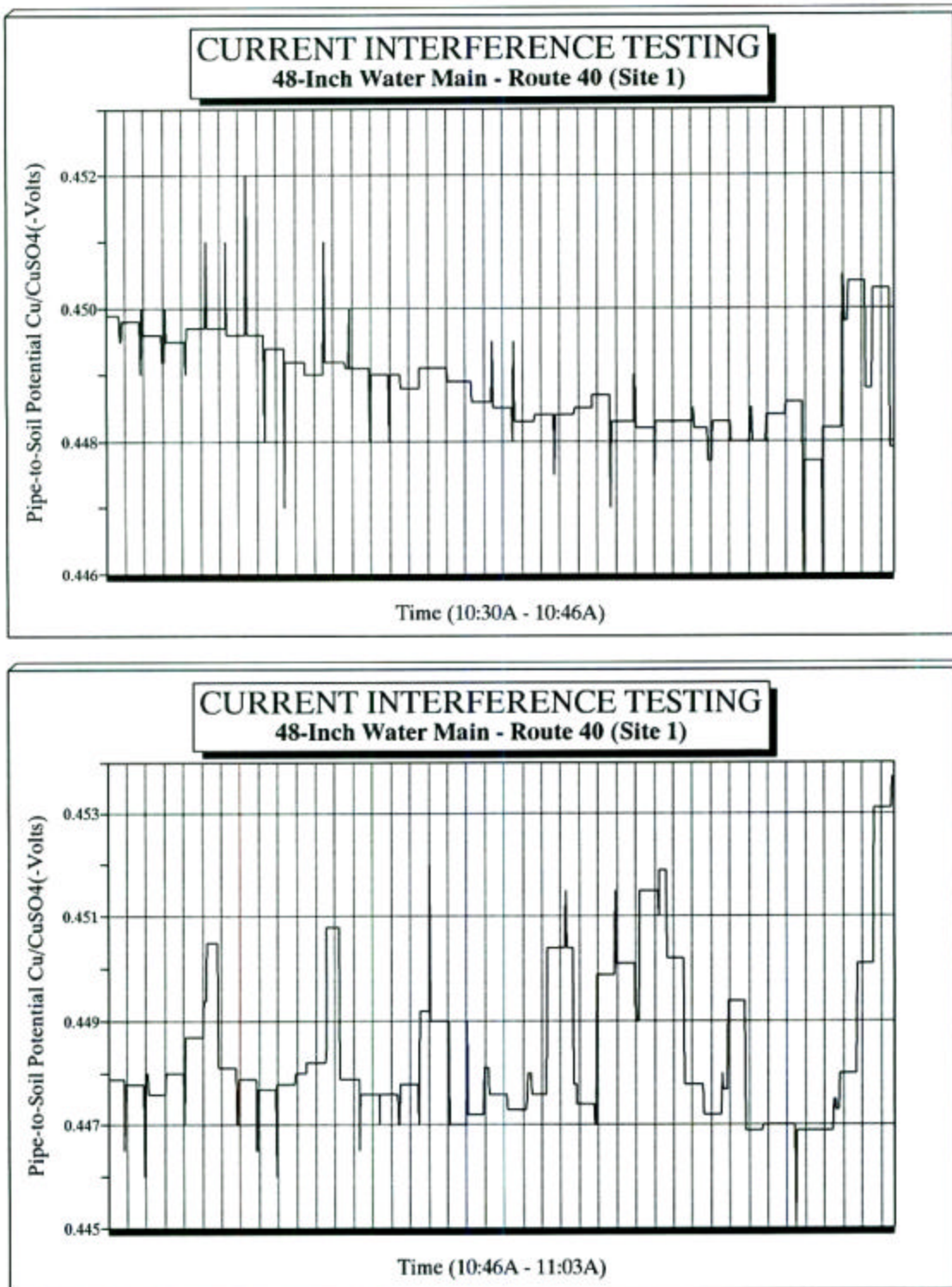


Figure 7. Detailed Current Interference Test Results for Site 1 from 10:30AM – 11:03AM

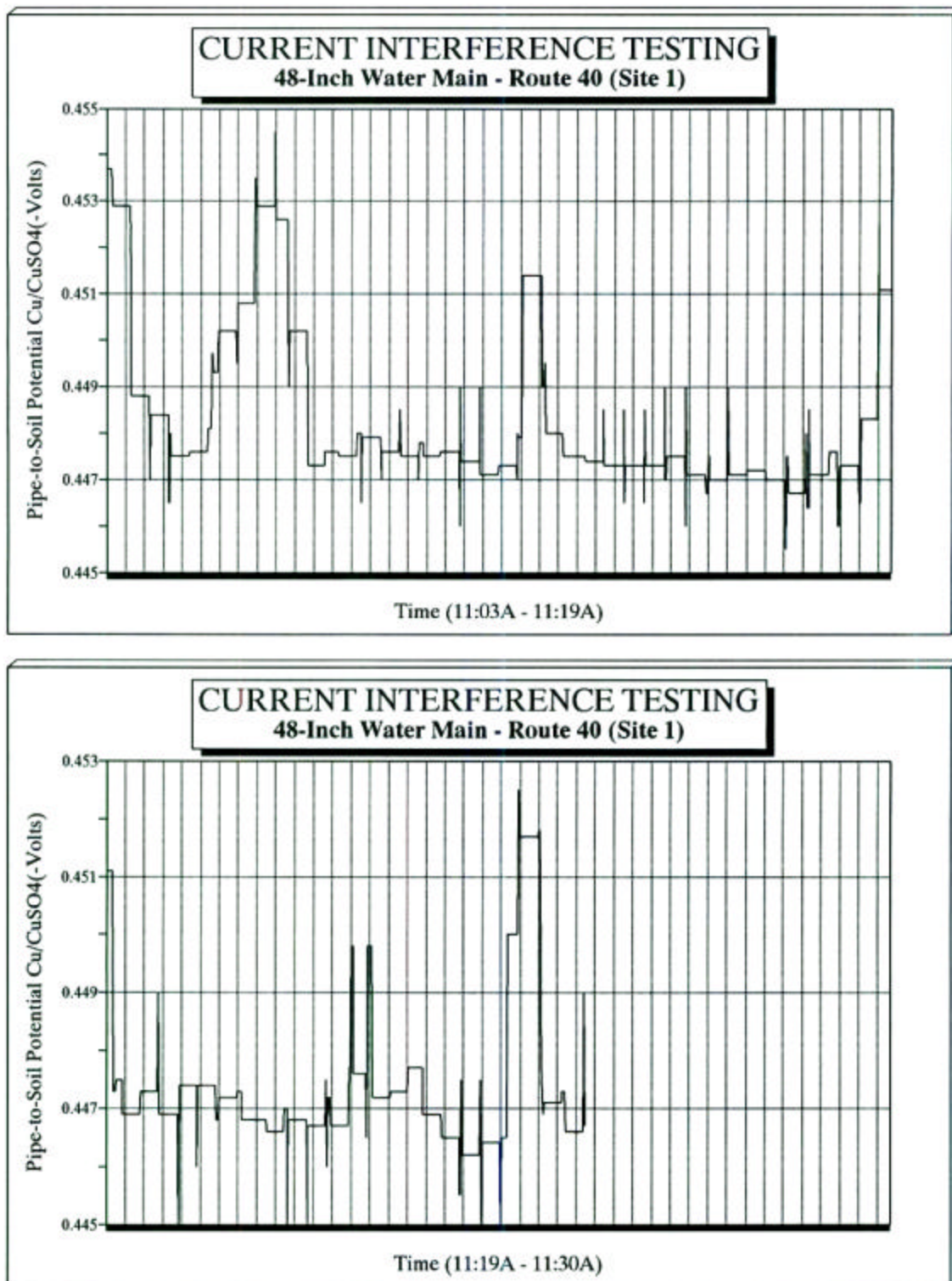


Figure 8. Detailed Current Interference Test Results for Site 1 from 11:03AM – 11:30AM

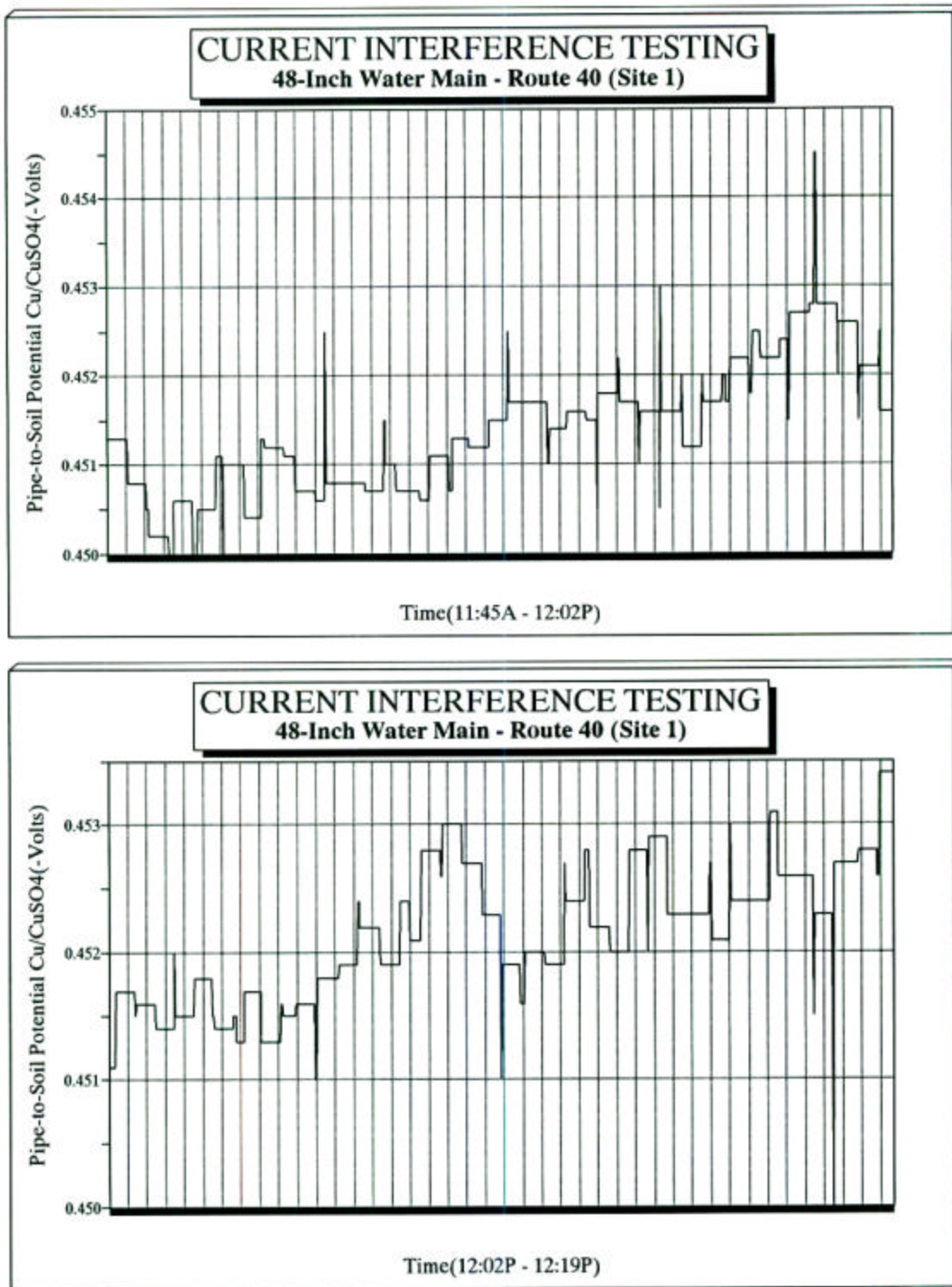


Figure 9. Detailed Current Interference Test Results for Site 1 from 11:45AM – 12:19PM

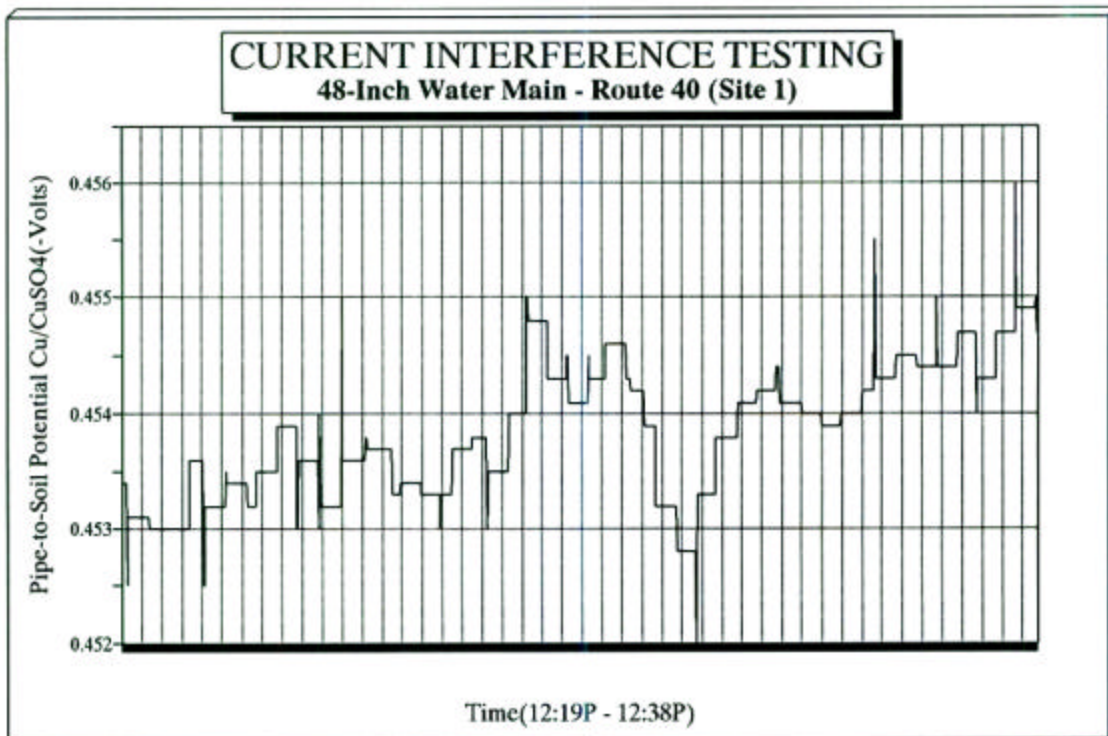


Figure 10. Detailed Current Interference Test Results for Site 1 from 12:19PM – 12:38PM