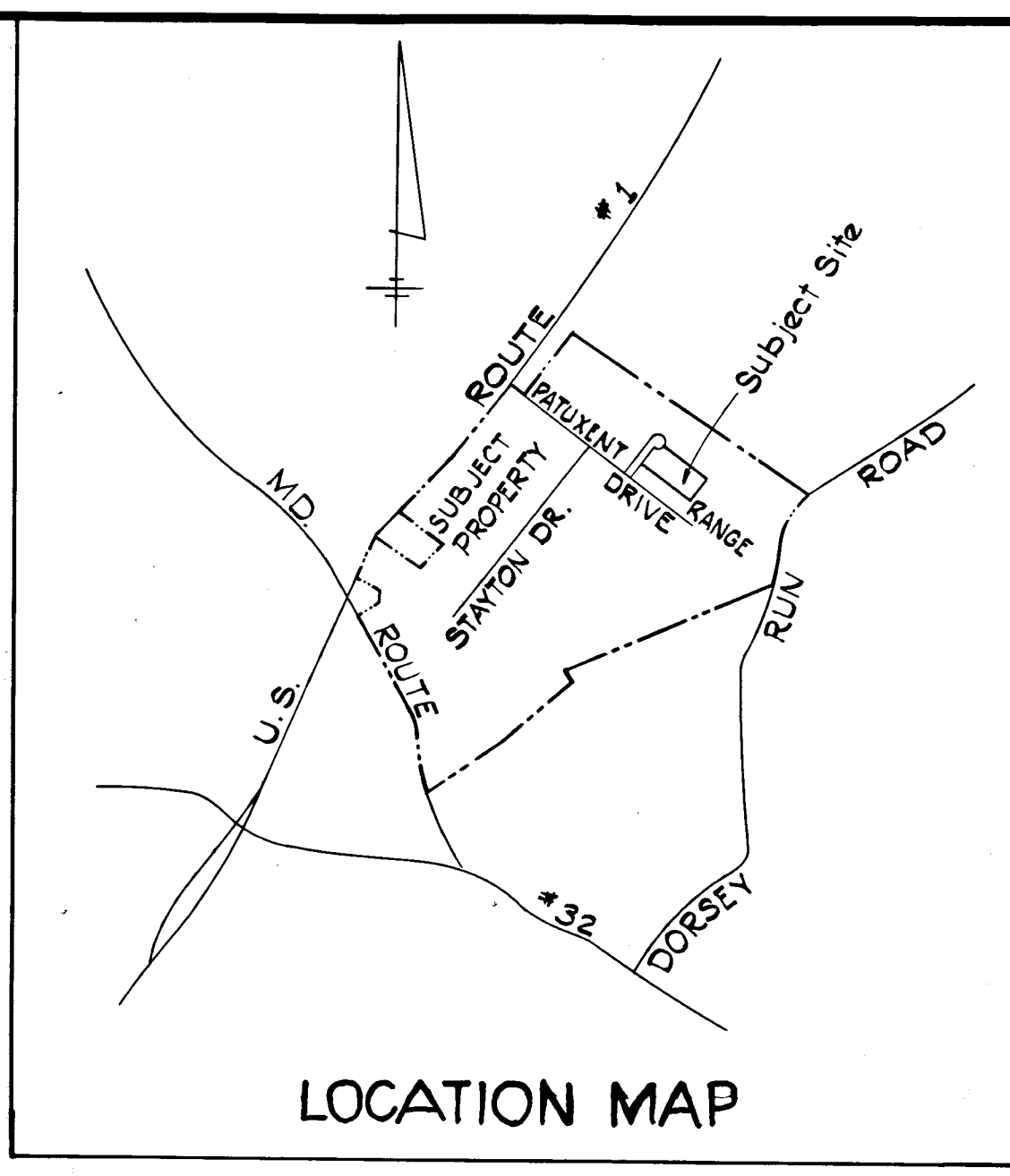
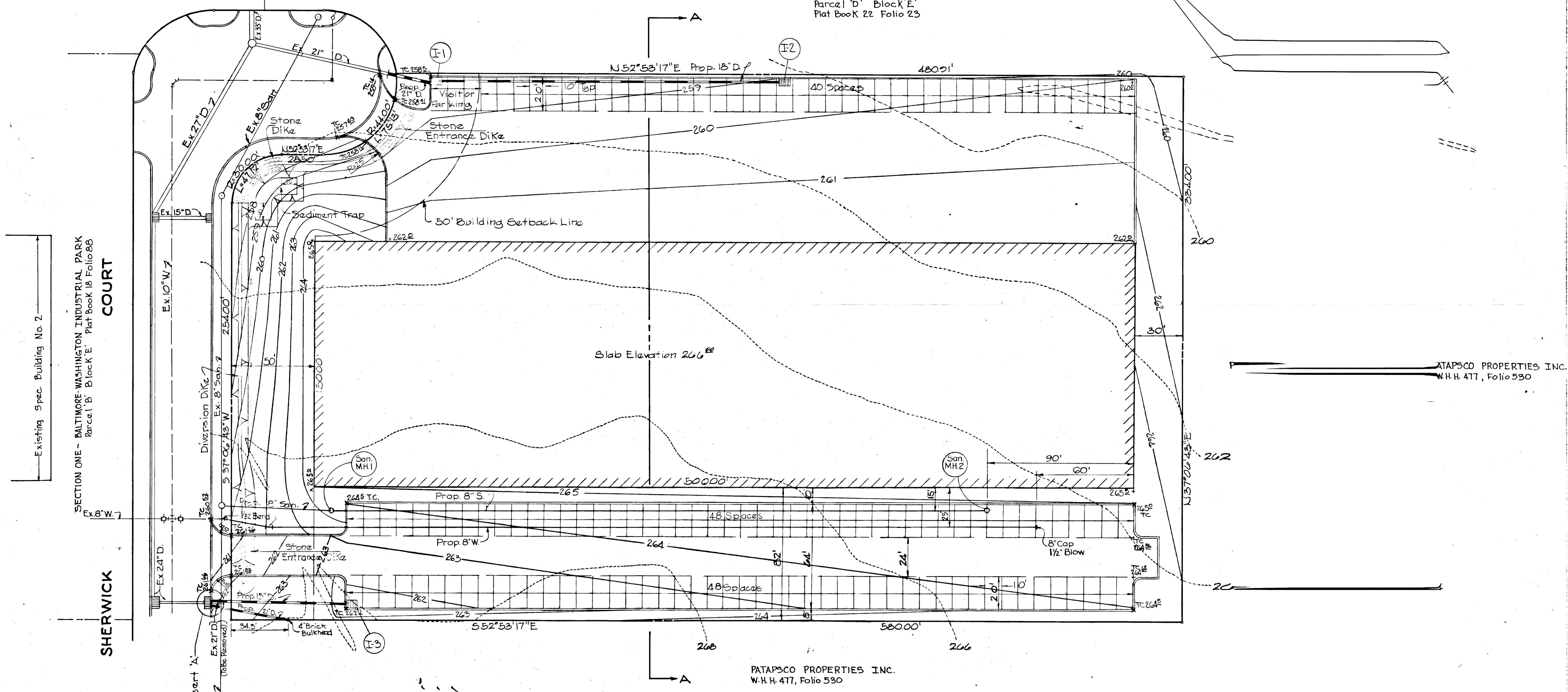


SECTION ONE - BALTIMORE-WASHINGTON INDUSTRIAL PARK
Parcel C Block E
Plat Book 18 Folio 88

SECTION ONE - BALTIMORE-WASHINGTON INDUSTRIAL PARK
Parcel D Block E
Plat Book 22 Folio 25

SECTION ONE - BALTIMORE-WASHINGTON INDUSTRIAL PARK
Parcel B Block E
Plat Book 18 Folio 88



CERTIFICATIONS

CERTIFICATION BY A PROFESSIONAL ENGINEER: I Certify that this Plan for Erosion and Sediment Control Represents a Practical and Workable Plan Based on my Personal Knowledge of the Site Conditions and that it was Prepared in Accordance With the Requirements of the Howard Soil Conservation District.

Charles E. Leis
Signature of Engineer 5048 7/10/72
Reg. No. Date

CERTIFICATION BY THE DEVELOPER: I Certify That All Development and/or Construction Will be Done According to this Plan of Development and Plan for Erosion and Sediment Control, and I also Authorize Periodic On-Site Inspection by the Howard Soil Conservation District or Their Authorized Agents, as and Deemed Necessary. Deviation from this Plan Will Not be Made Unless Authorized by the Howard Soil Conservation District.

D.S. Hamdy
Signature of Developer 7/7/72
Date

APPROVAL

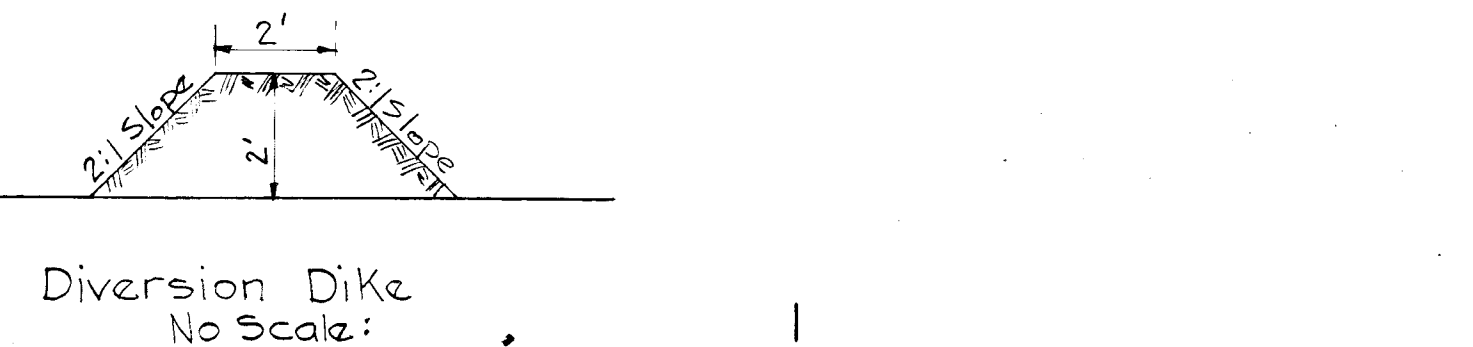
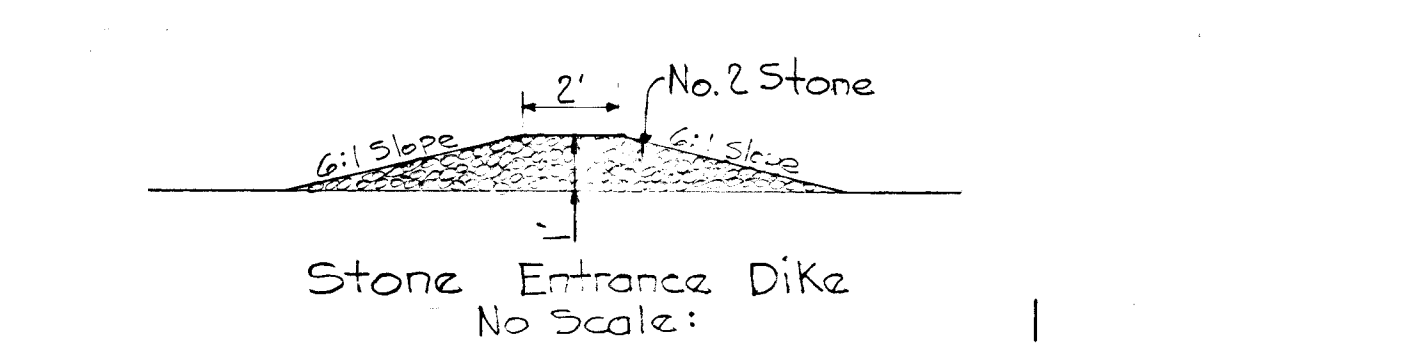
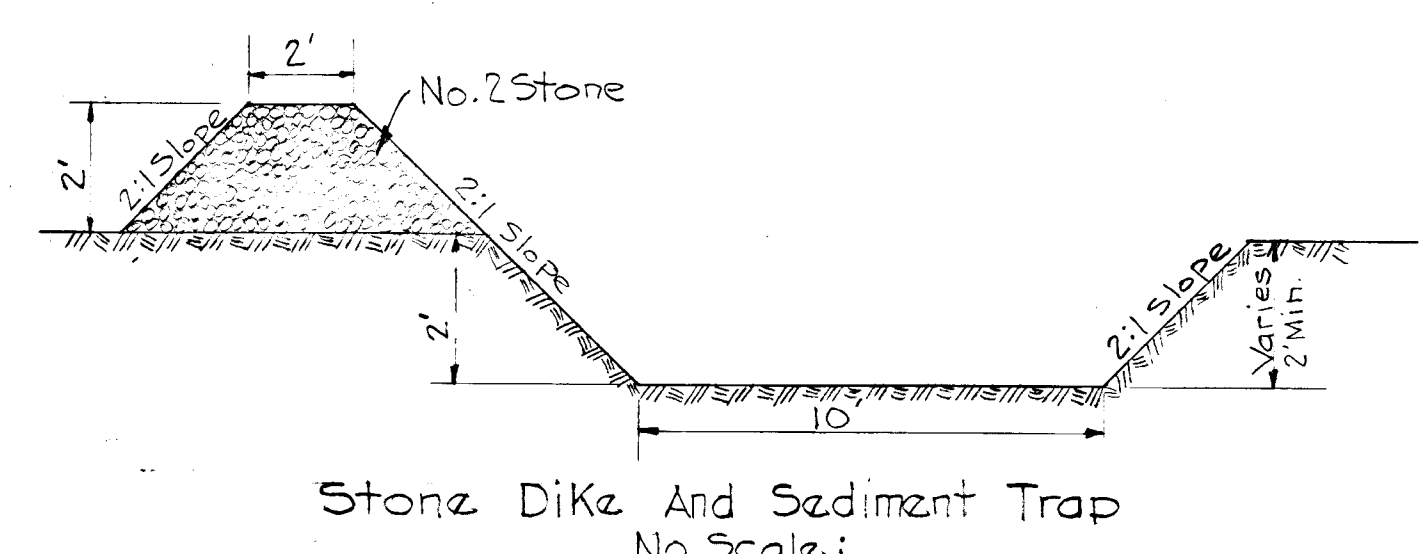
HOWARD COUNTY SOIL CONSERVATION DISTRICT: This Development Plan is Approved for Soil Erosion and Sediment Control by the Howard Soil Conservation District.

Reviewed: *James P. Niles* 7/16/72
District Conservationist Date

Approved: *Robert W. Zehner* 7/10/72
District Coordinator Date
Howard Soil Conservation District

SCHEDULE OF CONSTRUCTION FOR EROSION CONTROL

- 1) Contractor to Notify the Howard County Soil Conservation District Office (Phone 465-3180) 24 Hours Before Starting Work on this Project.
- 2) Diversion Dike, Stone Dike and Sediment Trap to be Constructed and Stabilized Before Site is Subgraded. Diversion Dike to be Stabilized as Follows: Use Iron Ryegrass at the Rate of 35#/Ac., Ground Limestone to be Applied at the Rate of 9#/Ac., and Commercial Fertilizer (5-10-10) at the Rate of 12#/Ac. Mulch to be Unweathered Chopped Small Grain Straw (Preferably Wheat) at the Rate of 1 1/2 T./Ac. and Should be Spread Uniformly Over Entire Area. Mulch to be Anchored With Asphalt Mulch Tie-Down Using Liquid Asphalt - Rapid Curing (RC-70, RC-250 or RC-800) at the Rate of 0.1 Gal./Sq. Yd.
- 3) All Proposed Paved Areas are to have Base Course Material and Storm Drain Systems Installed as soon as Possible After Grading Operation. Storm Drain Inlets are to be Capped Until the Stone Base is Applied Upgrade.
- 4) All Slope Areas 3:1 or Steeper are to be Sodded as soon as Possible After Grading Operation, as Follows: Commercial Fertilizer (5-10-10) to be Applied at the Rate of 3 1/2 T./Ac. and Ground Limestone at the Rate of 5#/000#. 5) All Remaining Areas are to be Stabilized as soon as Possible as Follows: Use a Seed Mixture of Annual Rye Grass (20%), Kentucky Blue Grass (20%) and Kentucky 31 Fescue (60%) at the Rate of 200#/Ac. Surface Preparation to Include Ground Limestone Over Topsoil Surface Area at the Rate of 1 1/2 T./Ac. (67/1000#), Commercial Fertilizer (5-10-10) at the Rate of 3 1/2 T./Ac. (387/1000#), and Super Phosphate at the Rate of 60#/Ac. (157/000#). Immediately After Seeding, Uniformly Mulch Area With Unweathered Small Grain Straw (Preferably Wheat) at the Rate of 1 1/2 T./Ac. Anchor With Asphalt Mulch Tie-Down Using Liquid Asphalt - Rapid Curing (RC-70, RC-250 or RC-800) at the Rate of 0.1 Gal./Sq. Yd.



EROSION CONTROL PLAN
SPEC BLDG #5
PARCELS BLOCK E
BALTIMORE-WASHINGTON INDUSTRIAL PARK
HOWARD CO., MD. ELECTION DIST #6
SCALE: 1"=30' DATE: APRIL 17, 1972
OWNER & DEVELOPER GEORGE WILLIAM STEPHENS, JR.
ATAPSCO PROPERTIES INC. AND ASSOCIATES, INC.
501 ST. PAUL STREET ENGINEERS
BALTIMORE, MARYLAND 21202 303 ALLEGHENY AVE.
TOWSON 4, MARYLAND