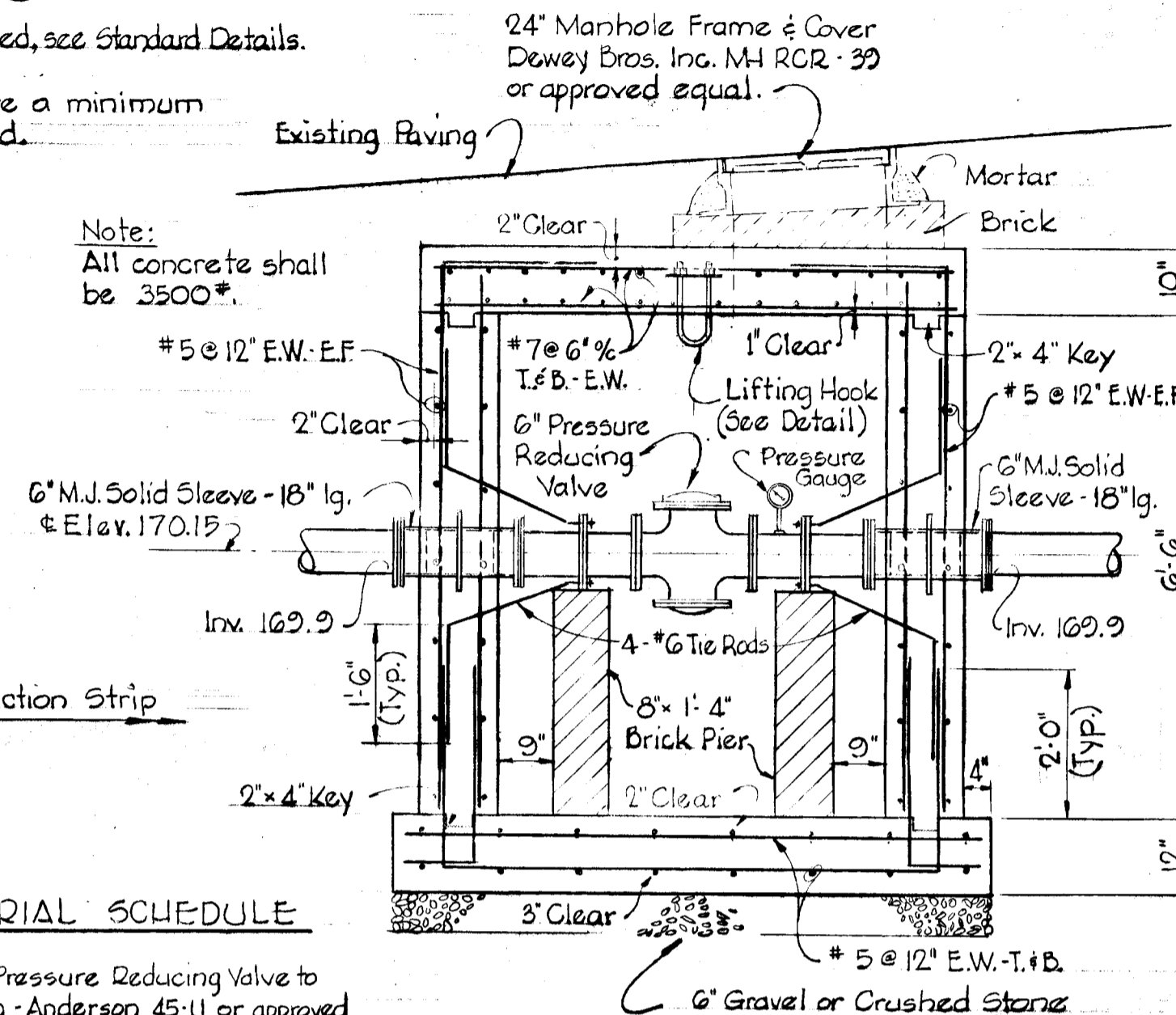


GENERAL NOTES

1. All pipe elevations shown are invert elevations.
2. Block all fittings with concrete if required, see Standard Details.
3. All 6" W to be Class 22 CIP and to have a minimum of 3/2" cover unless otherwise noted.
4. 2" W to be galvanized wrought iron.

24" Manhole Frame & Cover
Dewey Bros. Inc. MH RCR-39
or approved equal.

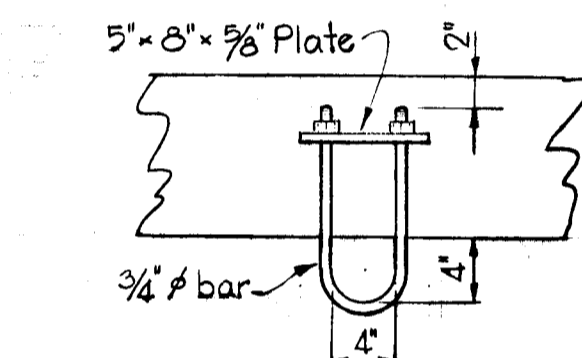
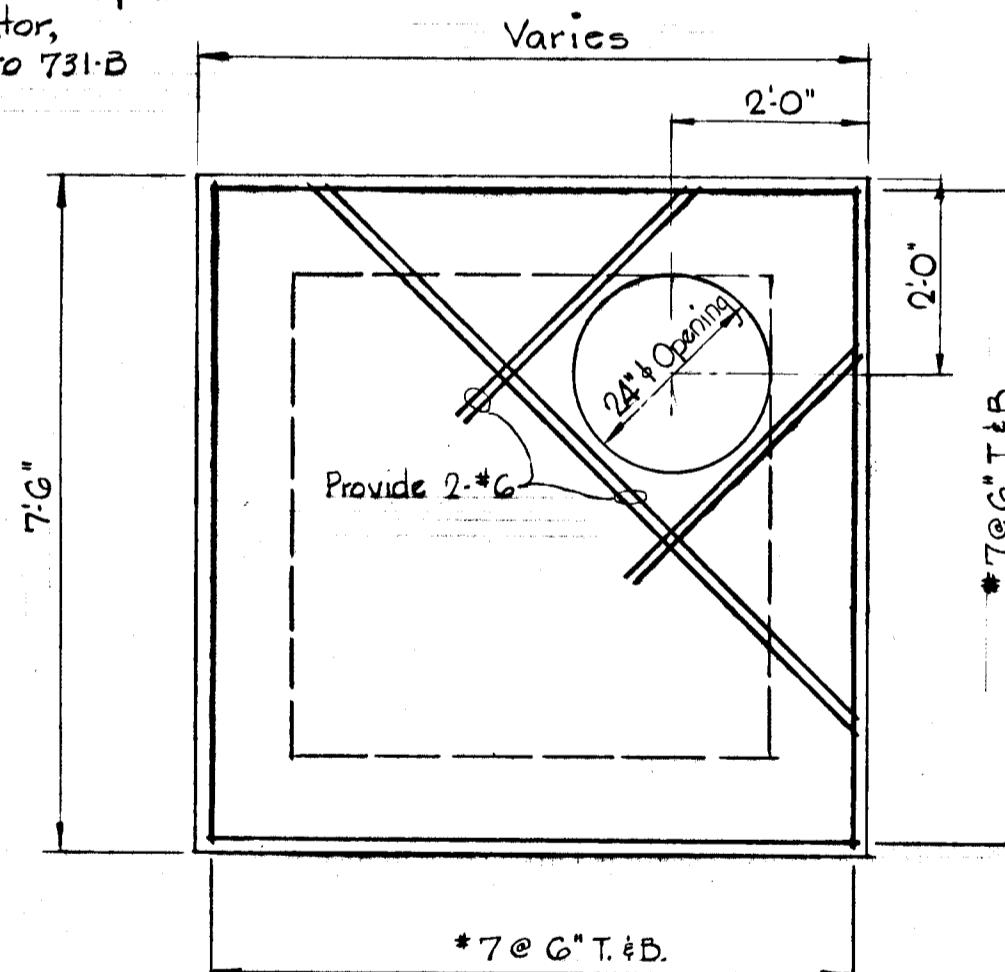
Note:
All concrete shall
be 3500*.



MATERIAL SCHEDULE

1. 6" Water Pressure Reducing Valve to be Golden-Anderson 45-U or approved equal.
2. 2" Water Pressure Reducing Valve to be Golden Anderson 43-U or approved equal.
3. Pressure Gauge, 0 to 300 psi. - Fox Boro Model MA or approved equal.
4. Pressure Recorder & Indicator, 0 to 300 psi, 7 day Fox Boro 731-B or approved equal.

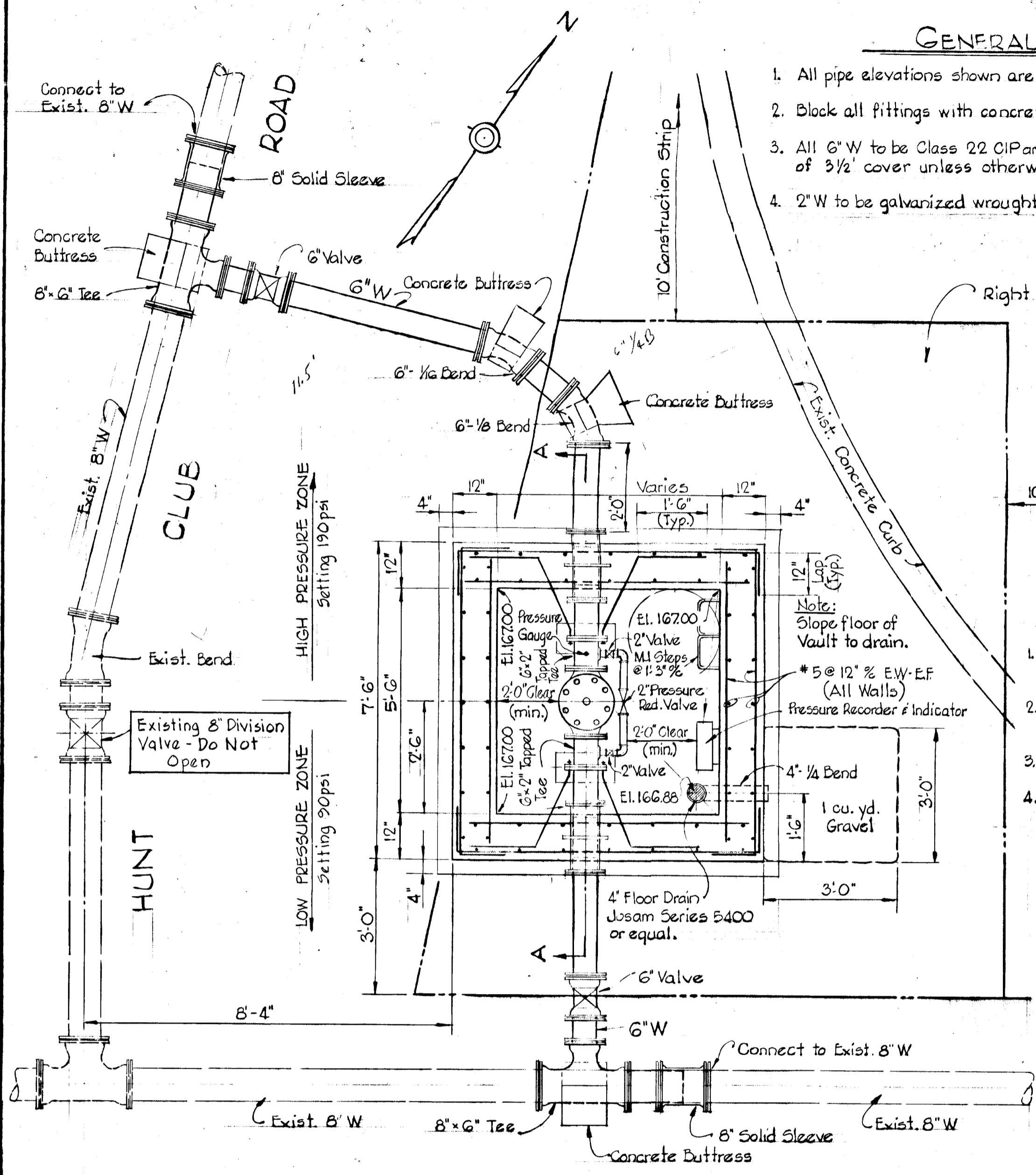
SECTION "A-A"



Note:
Assembly shall be hot dip galvanized.
Lifting Hook to be centered over
Pressure Reducing Valve.

LIFTING HOOK DETAIL

Scale: 1" = 1'-0"



BALTIMORE - WASHINGTON BOULEVARD U.S. ROUTE # 1

To Washington To Baltimore

PLAN

W.R. & A. B.M. # "Hunt Club" Elev. 175.52
Road side flange bolt - fire Hydrant, inter.
Hunt Club Road & Washington Blvd.

6" PRESSURE REDUCING VALVE VAULT

Scale: 1/2" = 1'-0"

PRESSURE REDUCING VALVE VAULT
BALTIMORE-WASHINGTON BLVD - HUNT CLUB ROAD
HOWARD COUNTY METROPOLITAN COMMISSION
ELKRIDGE SUB-DISTRICT

DRAWING 1 of 1

MAY 21, 1964

WHITMAN, REQUARDT & ASSOCIATES
ENGINEERS
BALTIMORE, MARYLAND