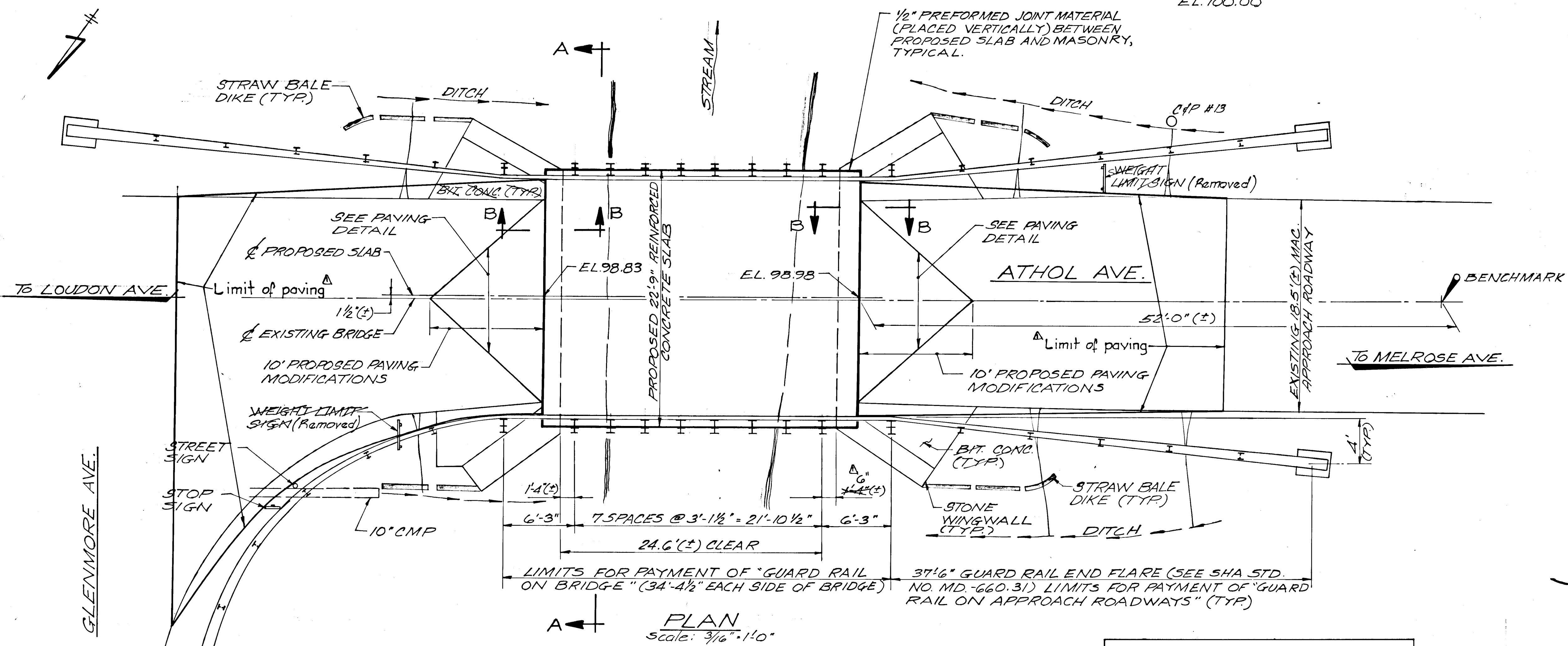


GENERAL NOTES

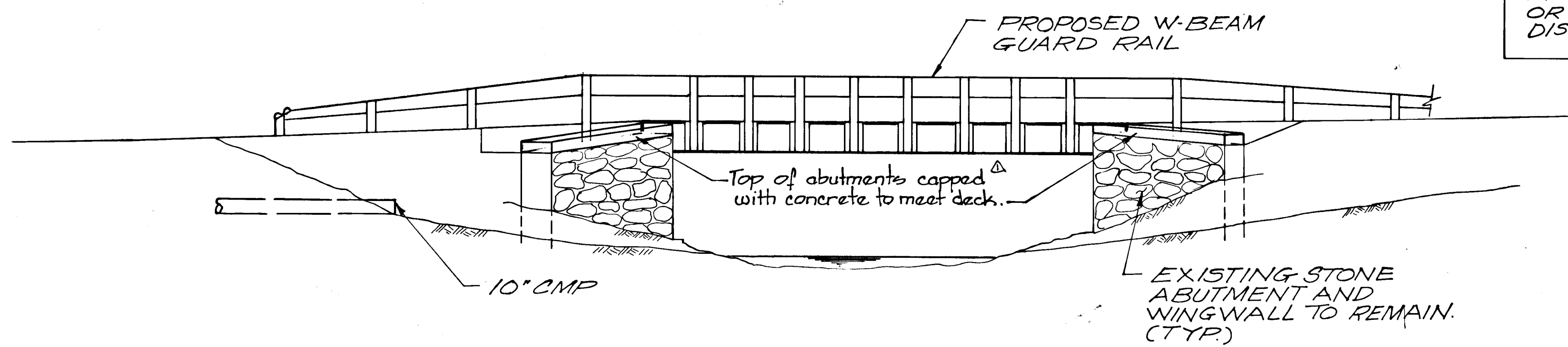
SPECIFICATIONS: HOWARD COUNTY STANDARD SPECIFICATIONS AND SHA SPECIFICATIONS DATED MARCH 1968, SUPPLEMENT TO SHA SPECIFICATIONS DATED AUGUST, 1980, REVISIONS THEREOF AND ADDITIONS THERETO AND SPECIAL PROVISIONS FOR MATERIALS AND CONSTRUCTION.
 AASHTO STANDARD SPECIFICATIONS FOR HIGHWAY BRIDGES DATED 1977 FOR DESIGN INCLUDING 1978 THROUGH 1982 INTERIM SPECIFICATIONS.
 LOADING: HS20-44, WITH PROVISION FOR FUTURE 2" WEARING SURFACE.
 CONCRETE: ALL CONCRETE FOR BRIDGE DECK SLAB SHALL BE MIX NO. 6 (4500 PSI). SEE SPECIAL PROVISIONS. ($f_c = 1350$ PSI)
 CHAMFER: ALL EXPOSED CORNERS OF CONCRETE SHALL BE CHAMFERED WITH 3/4" X 3/4" MILLED CHAMFER STRIPS.
 REINFORCING STEEL: REINFORCING STEEL SHALL CONFORM TO ASTM DESIGNATION A-615, GRADE 60. ALL SPLICES SHALL BE LAPPED A MINIMUM OF 40 BAR DIAMETERS. MINIMUM COVER FOR ANY BAR SHALL BE 2" UNLESS NOTED. ALL REINFORCING STEEL IN THE DECK SLAB SHALL BE EPOXY COATED. SEE SPECIAL PROVISIONS.
 DIMENSIONS: ALL DIMENSIONS AFFECTED BY THE GEOMETRICS, AND/OR LOCATION OF THE EXISTING STRUCTURE ARE TO BE CHECKED IN THE FIELD BY THE CONTRACTOR, BEFORE ANY CONSTRUCTION IS DONE AND BEFORE ANY REINFORCING STEEL, ETC., IS ORDERED OR FABRICATED. IT SHALL BE THE RESPONSIBILITY OF THE CONTRACTOR TO SUPPLY THE ENGINEER WITH ALL FIELD DIMENSIONS REQUIRED TO CHECK DETAIL DRAWINGS.
 REMOVAL OF EXISTING SUPERSTRUCTURE: THE CONTRACTOR SHALL BE RESPONSIBLE FOR THE REMOVAL AND DISPOSAL OF THE EXISTING BRIDGE SUPERSTRUCTURE TO A SITE APPROVED BY THE ENGINEER. THE CONTRACTOR SHALL REMOVE THE EXISTING BEAMS, GUARD RAIL, AND POSTS, AND DELIVER THEM TO THE COUNTY MAINTENANCE YARD ON MAYFIELD AVENUE. SEE SPECIAL PROVISIONS.
 GUARD RAIL: ALL W BEAM GUARD RAIL ELEMENTS, GROUND POSTS, CONNECTIONS, ETC. SHALL BE IN ACCORDANCE WITH HOWARD COUNTY STANDARDS. ALL BRIDGE MOUNTED GUARD RAIL POSTS, CONNECTION PLATES, AND ANCHOR BOLTS SHALL CONFORM TO ASTM DESIGNATION A-588 AND BE GALVANIZED. SEE SPECIAL PROVISIONS.

BENCHMARK: RAILROAD SPIKE SET FLUSH WITH SURFACE OF ROADWAY, ASSUMED EL. 100.00

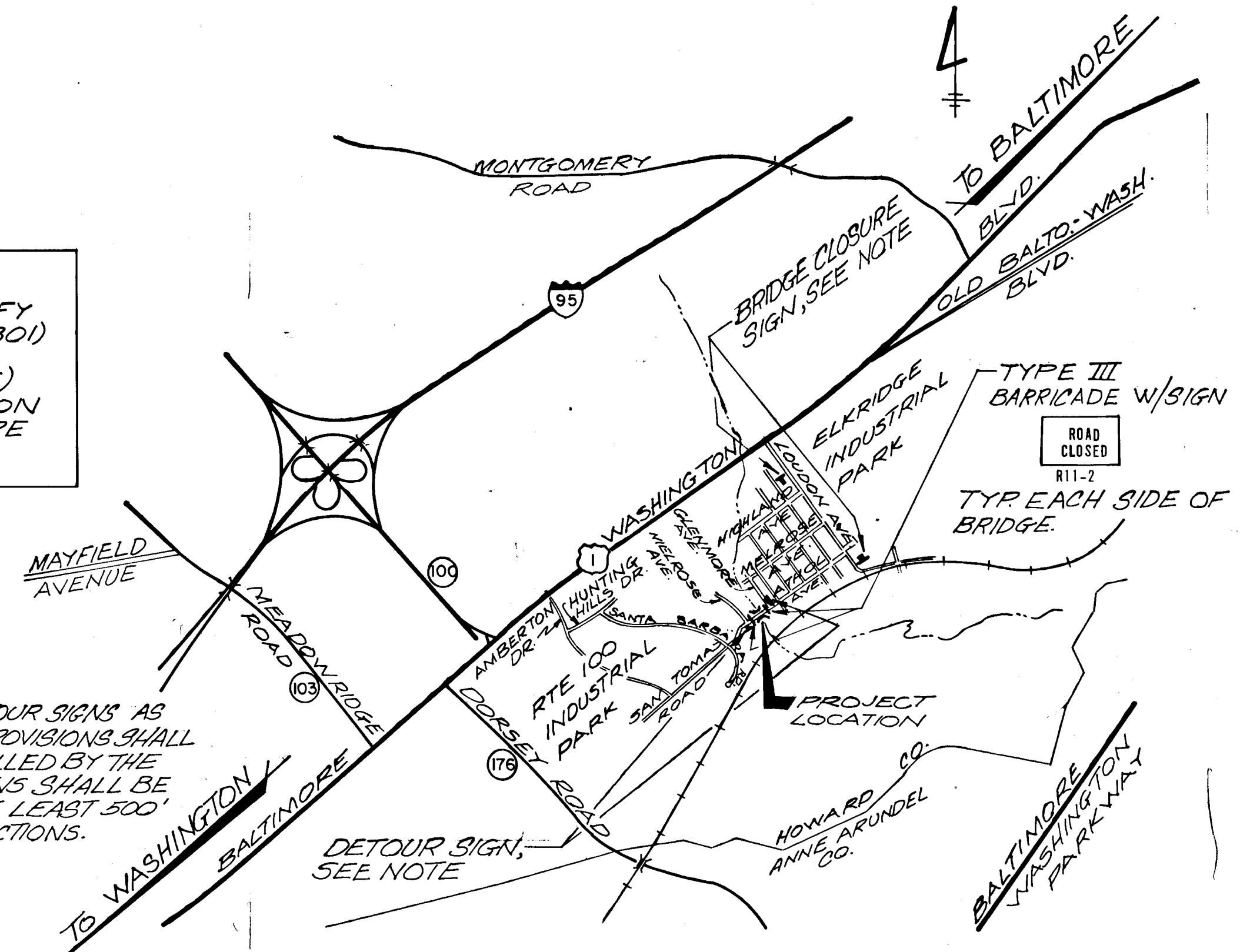


PLAN
Scale: 3/16" = 1'-0"

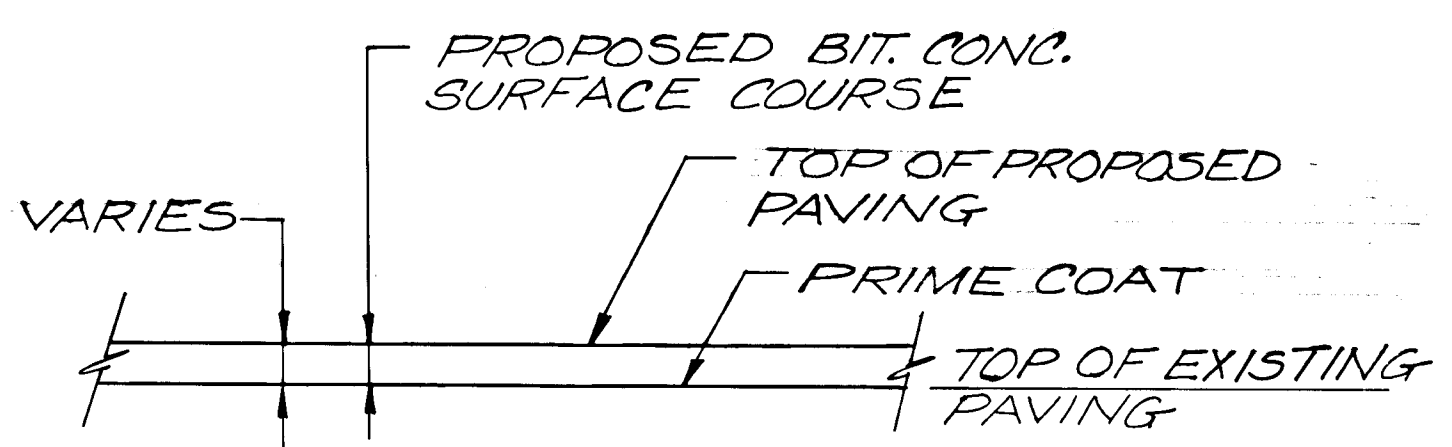
NOTE:
THE CONTRACTOR SHALL NOTIFY "MISS UTILITY" AT TELEPHONE (301) 559-0100 FORTY-EIGHT (48) HOURS (2 FULL WORKING DAYS) IN ADVANCE OF ANY EXCAVATION OR IF UNKNOWN UTILITIES ARE DISCOVERED.



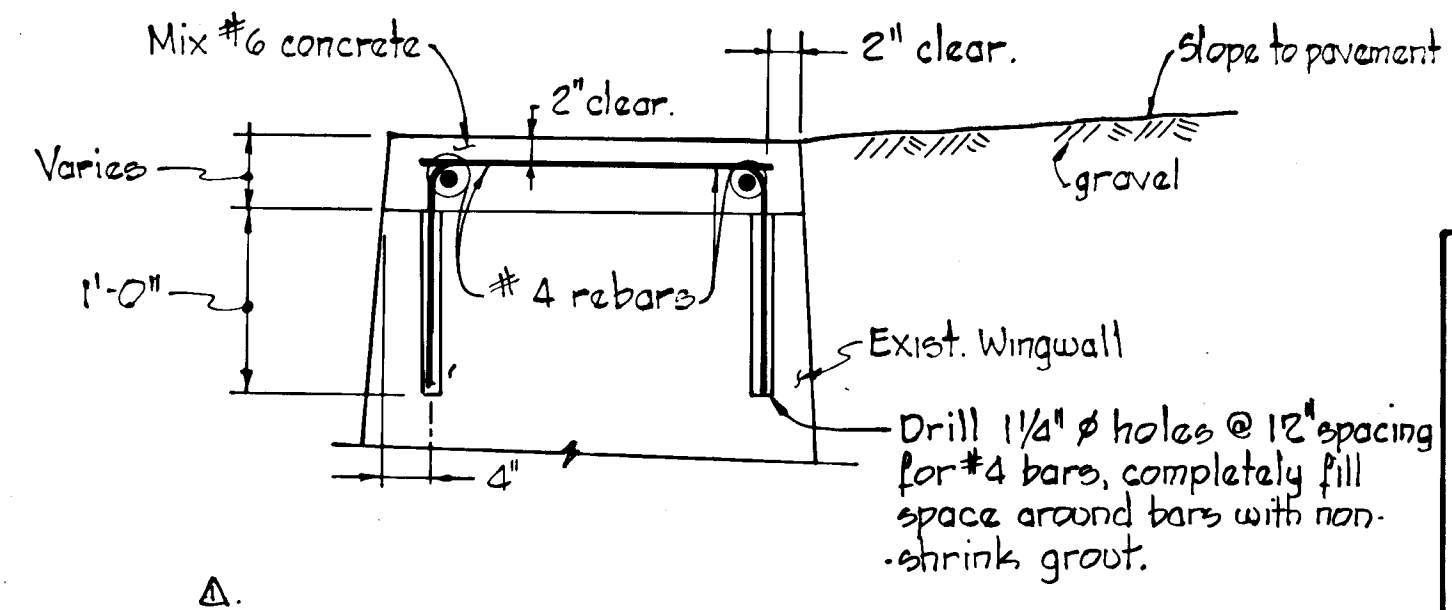
ELEVATION
Scale: 3/16" = 1'-0"



VICINITY MAP AND TRAFFIC PLAN
Scale: 1" = 2000'



PAVING DETAIL
Not to Scale



WINGWALL EXTENSION DETAIL
NO SCALE

KIDDE CONSULTANTS, INC.
CONSULTING ENGINEERS
BALTIMORE, MARYLAND

APPROVED: CHIEF DIVISION OF ROADS, BRIDGES & STORM DRNG.
Elizabeth Anderson Polcia 4/15/83 DATE

APPROVED: CHIEF, BUREAU OF ENGINEERING
James W. Shaffer 3/30/83 DATE

APPROVED: DIRECTOR, DEPARTMENT OF PUBLIC WORKS
James F. Nemmer 8-12-83 DATE

REVISIONS

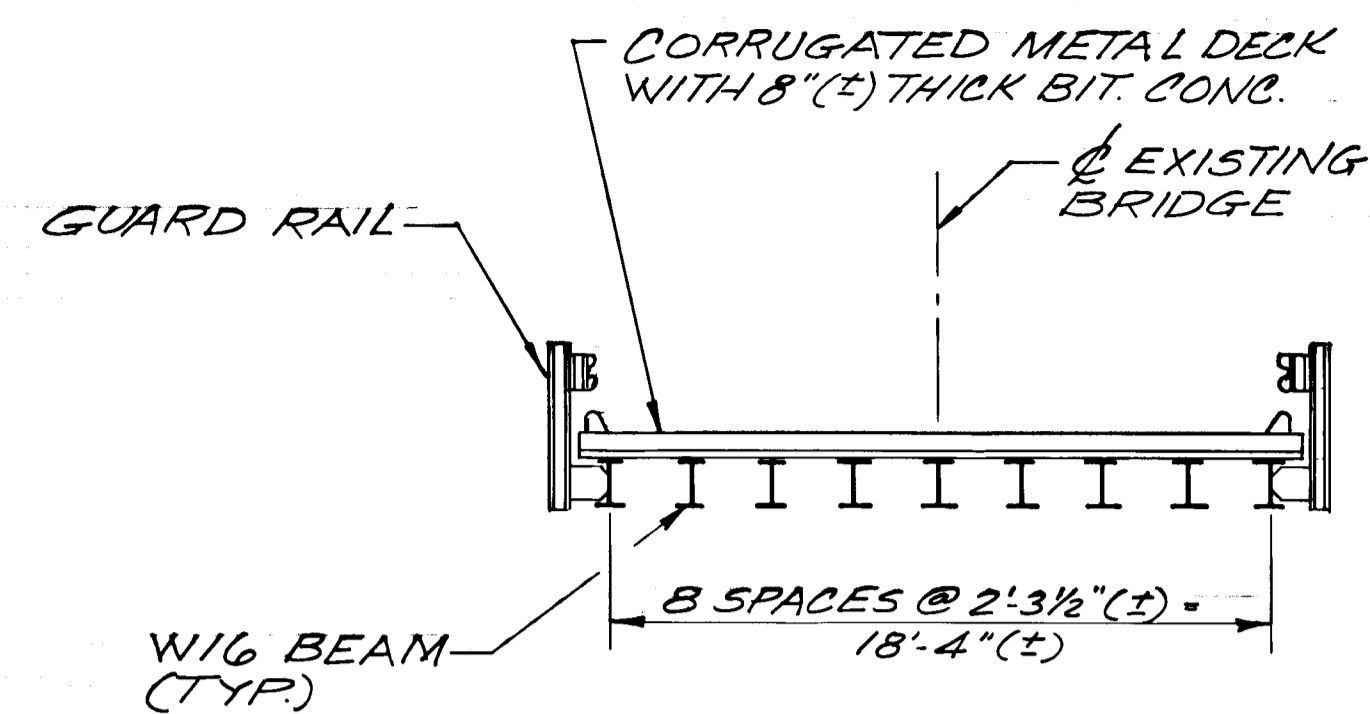
HOWARD COUNTY, MARYLAND
DEPARTMENT OF PUBLIC WORKS
BUREAU OF ENGINEERING
ATHOL AVE. BRIDGE HO-61
CAPITAL PROJECT NO. B-3809HH
REHABILITATION PLANS

SCALE: AS SHOWN DATE: 4/15/83 CONTRACT: HO-61 A

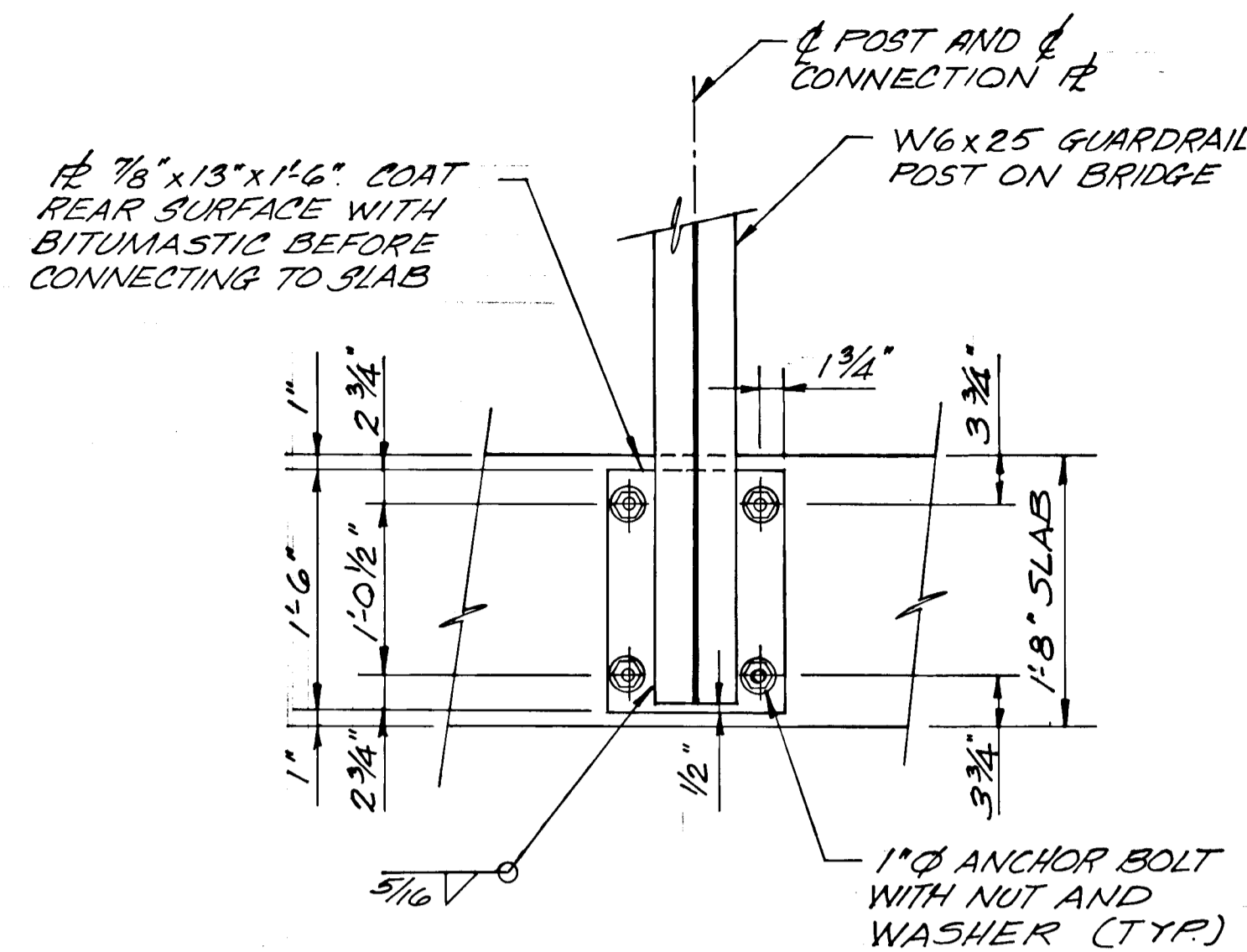
DESIGNED BY: E. B. W.
DRAWN BY: L. J. P.
CHECKED BY: J. W. H.

#105

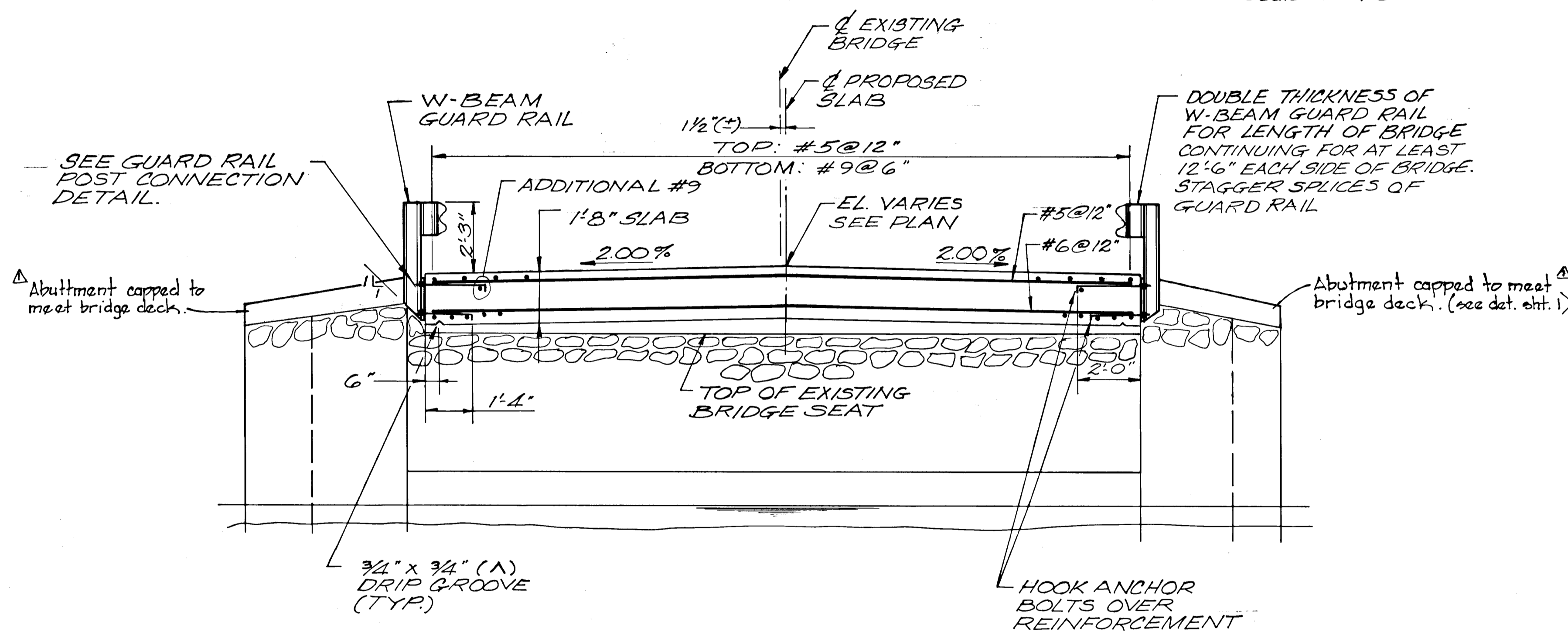
01-82159



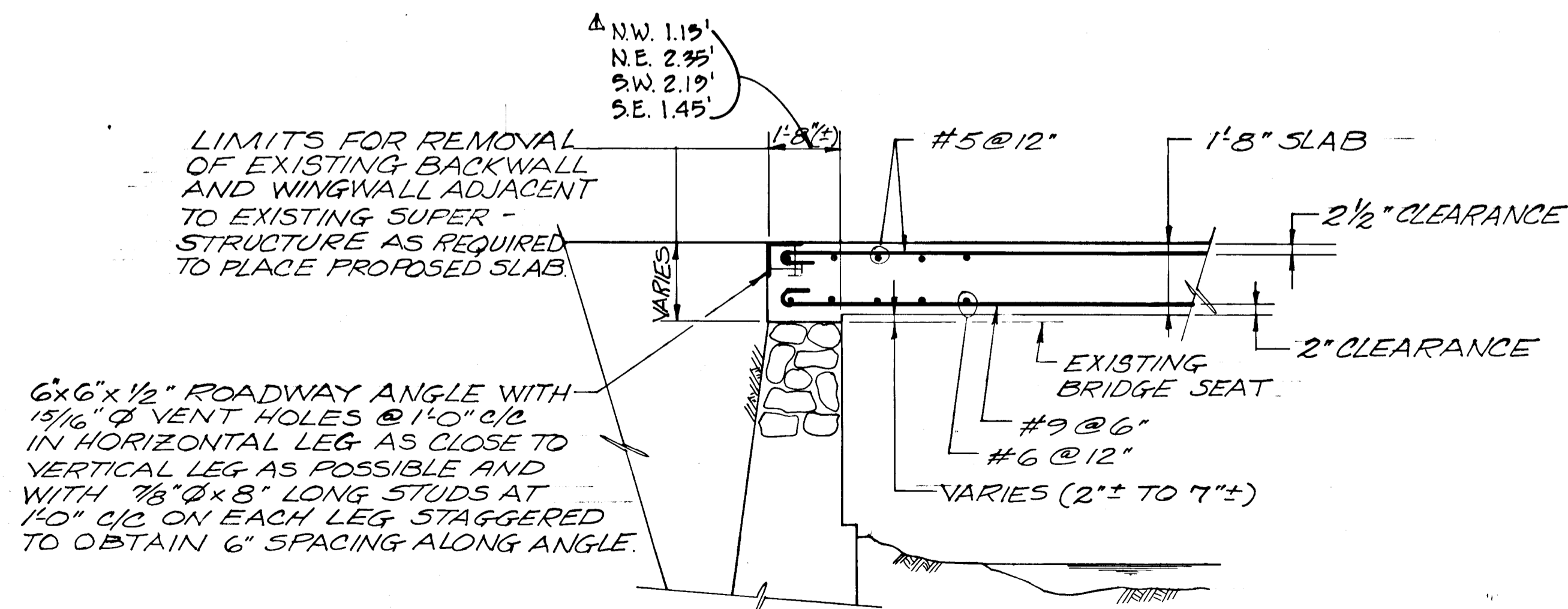
EXISTING SUPERSTRUCTURE TO BE REMOVED
Scale: 3/16" = 1'-0"



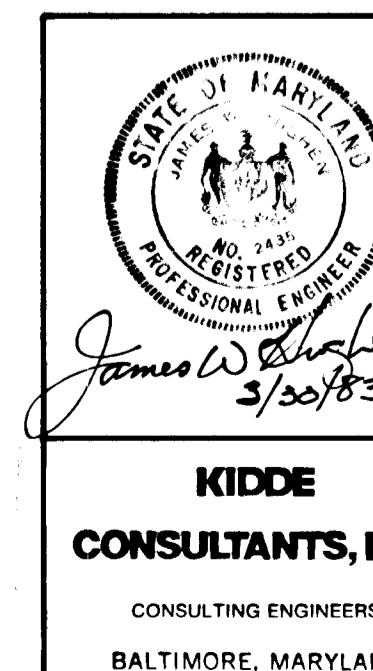
GUARD RAIL POST CONNECTION DETAIL
Scale: 1" = 1'-0"



SECTION A-A
Scale: 3/8" = 1'-0"



SECTION B-B
Scale: 3/8" = 1'-0"



APPROVED:
CHIEF, DIVISION OF ROADS, BRIDGES & STORM DRNG.
Elizabeth Anderson Calia 4/15/83
DATE

APPROVED:
CHIEF, BUREAU OF ENGINEERING
William S. Kelly 4-15-83
DATE

APPROVED:
DIRECTOR, DEPARTMENT OF PUBLIC WORKS
John F. Nimmey 8-12-83
DATE

REVISIONS	HOWARD COUNTY, MARYLAND DEPARTMENT OF PUBLIC WORKS BUREAU OF ENGINEERING ATHOL AVE. BRIDGE HO-61 CAPITAL PROJECT NO. B-3809 HH REHABILITATION PLANS
	SCALE: AS SHOWN DATE: 4/15/83 CONTRACT: HO-61A
	DESIGNED BY: E.B.W. DRAWN BY: L.J.P. CHECKED BY: J.W.H.
	SHEET NO. 2 OF 2

1015

61228-10