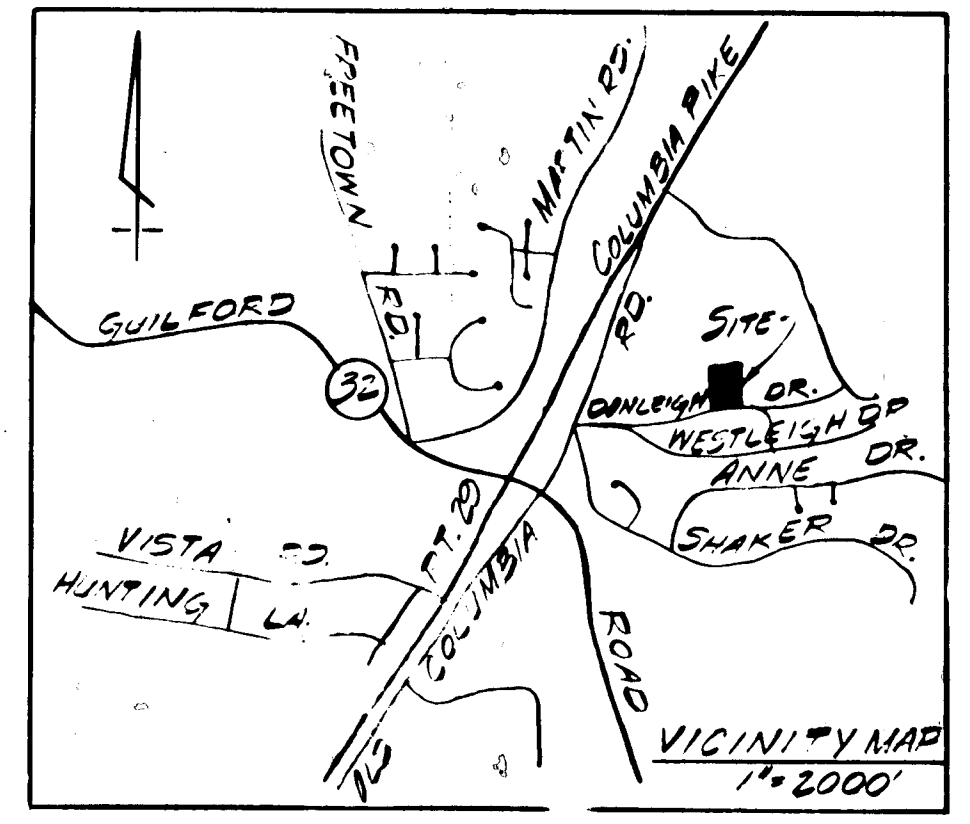
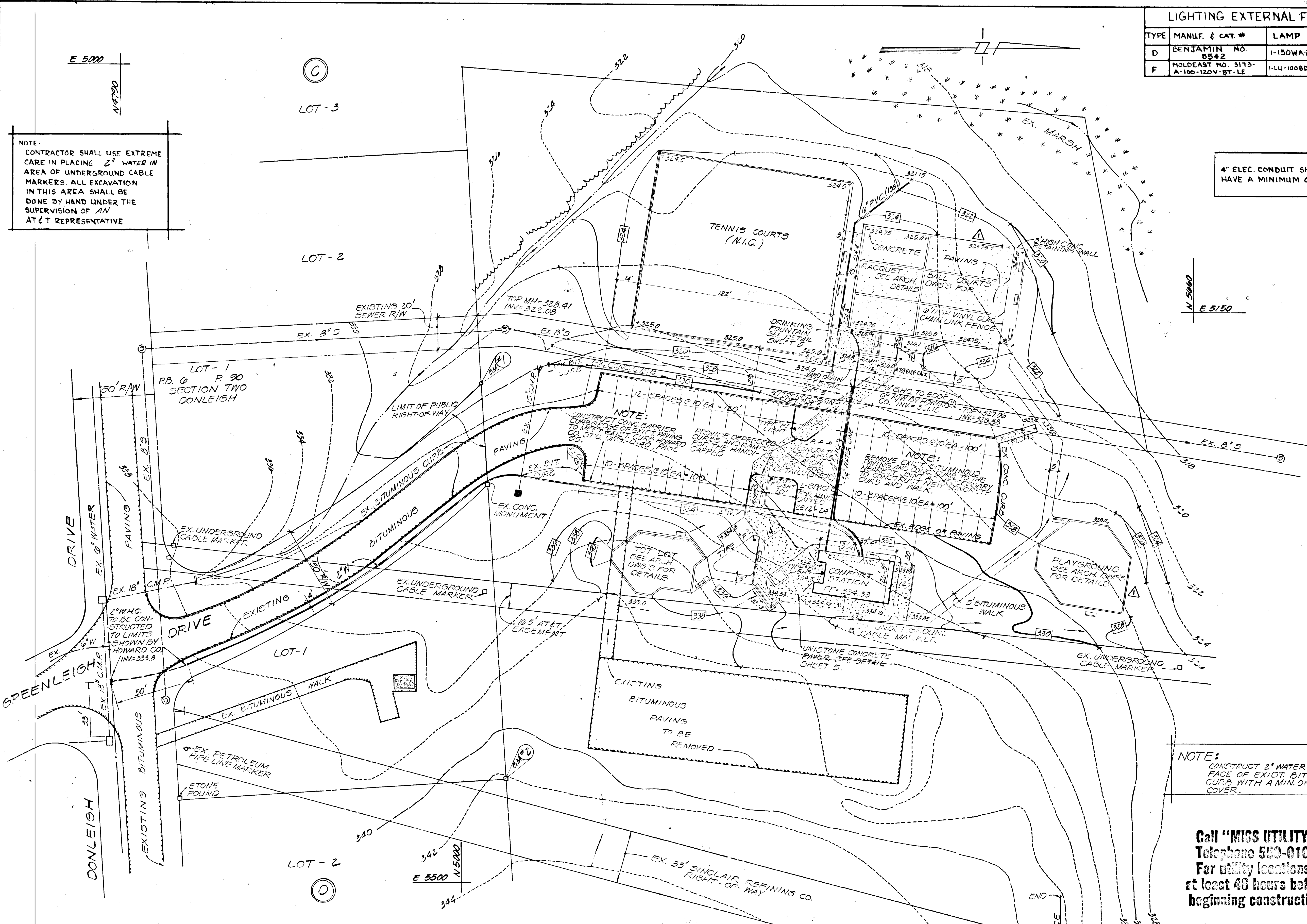


LIGHTING EXTERNAL FIXTURES			
TYPE	MANUF. & CAT. #	LAMP	REMARKS
D	BENJAMIN NO. 5542	1-150WA-23	ADJUST AS DIRECTED
F	MOLDEAST NO. 3173-A-100-120V-BT-LE	1-LU-100BD	BOLLARD MOUNTING



4" ELEC. CONDUIT SHALL HAVE A MINIMUM OF 1' COVER

NOTE: CONTRACTOR SHALL USE EXTREME CARE IN PLACING 2" WATER IN AREA OF UNDERGROUND CABLE MARKERS. ALL EXCAVATION IN THIS AREA SHALL BE DONE BY HAND UNDER THE SUPERVISION OF AN AT&T REPRESENTATIVE



LEGEND	
	EXISTING CONTOURS
	PROPOSED CONTOURS
	PROPOSED 4" BIT. PAVING
	PROPOSED UNISTONE CONCRETE PAVEMENT
	PROPOSED CONCRETE BARRIER CURB
	PROPOSED CONCRETE PAVING
	EXIST. BITUMINOUS PAVING

SITE ANALYSIS	
TOTAL AREA OF SITE	12.01 AC.
ZONING	R-20
TOTAL DISTURBED AREA	80,050 SQ. FT.
TOTAL REVEGETATED AREA	22,890 SQ. FT.
TOTAL BUILDING COVERAGE	1135.5 SQ. FT.
TOTAL NUMBER OF TENNIS COURTS	2
TOTAL NUMBER OF PROP. RACKETBALL COURTS	6

PARKING SCHEDULE	
PARKING REQUIRED - 2 SPACES/COURT	12 SPACES
RACQUET BALL	4 SPACES/COURT = 24 SPACES
TOTAL REQUIRED	36 SPACES
PARKING PROVIDED - 2 HANDICAPPED SPACES @ 12' x 20' = 2 SPACES	
10' x 20' SPACES = 42 SPACES	
TOTAL PROVIDED = 44 SPACES	

NOTE: CONSTRUCT 2" WATER 4'-0" OFF FACE OF EXIST. BITUMINOUS CURB WITH A MIN. OF 3.5' OF COVER.

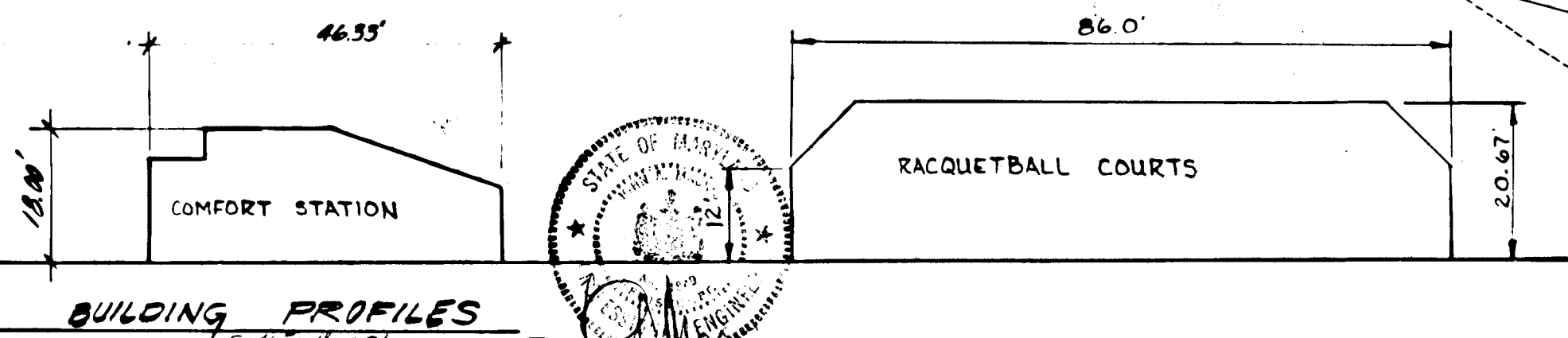
Call "MISS UTILITY" Telephone 563-0100 For utility locations at least 48 hours before beginning construction

OWNER
HOWARD COUNTY BOARD OF EDUCATION

DEVELOPER
HOWARD CO. DEPT. OF RECREATION AND PARKS
GEORGE HOWARD BUILDING
3430 COURT HOUSE DRIVE
ELLCOTT CITY, MD 21113
TEL: (301) 992-2480

NOTE: REVISION TO SDP 79-031	
APPROVED FOR PUBLIC WATER AND PUBLIC SEWERAGE SYSTEMS HOWARD COUNTY HEALTH DEPARTMENT	
SEE ORIGINAL APPROVAL COUNTY HEALTH OFFICER	7-10-79 DATE
APPROVED HOWARD COUNTY OFFICE OF PLANNING AND ZONING	
SEE ORIGINAL APPROVAL PLANNING DIRECTOR	7-12-79 DATE
SEE ORIGINAL APPROVAL CHIEF DIVISION OF LAND DEVELOPMENT	7-11-79 DATE
APPROVED FOR PUBLIC WATER AND PUBLIC SEWERAGE STORM DRAINAGE SYSTEMS AND PUBLIC ROADS HOWARD COUNTY DEPARTMENT OF PUBLIC WORKS	
George F. Neumann DIRECTOR	11-5-79 DATE
Allen J. Brannon CHIEF BUREAU OF ENGINEERING	11/5/79 DATE

BENCH MARKS	
#1 TOP OF PIPE 30' W OF GREENLEIGH 200' N OF DONLEIGH DR. EL. 328.07'	
#2 TOP OF STONE MONUMENT ELEV. 343.07'	



BENNETT - JOLSON & ASSOCIATES AIA ARCHITECTS
COLUMBIA, MARYLAND TEL. 301-730-1766

MACRIS, HENDRICKS AND WITMER P.A.
ENGINEERS, SURVEYORS, PLANNERS
2809 FREDERICK ROAD ROCKVILLE, MD 20850 TEL. (301)-340-8705

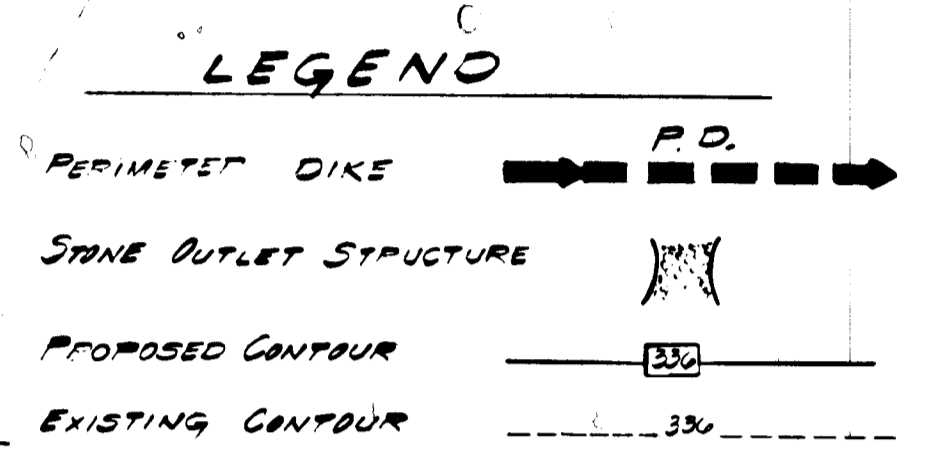
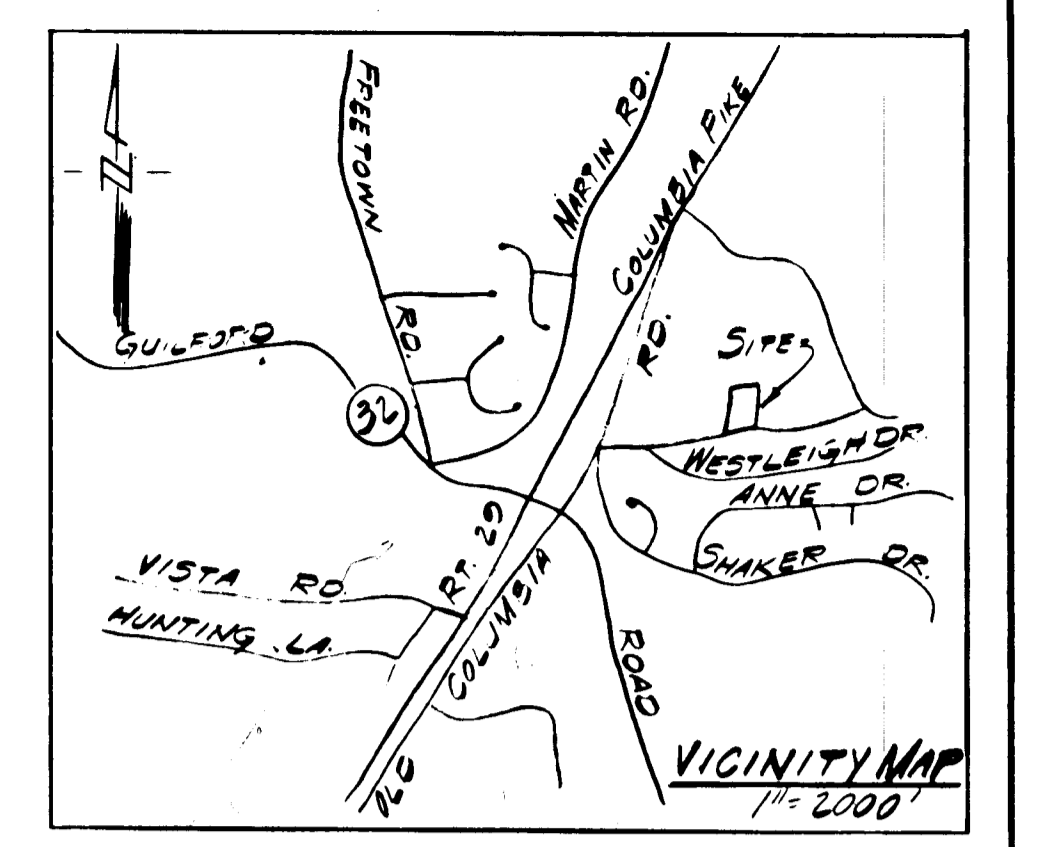
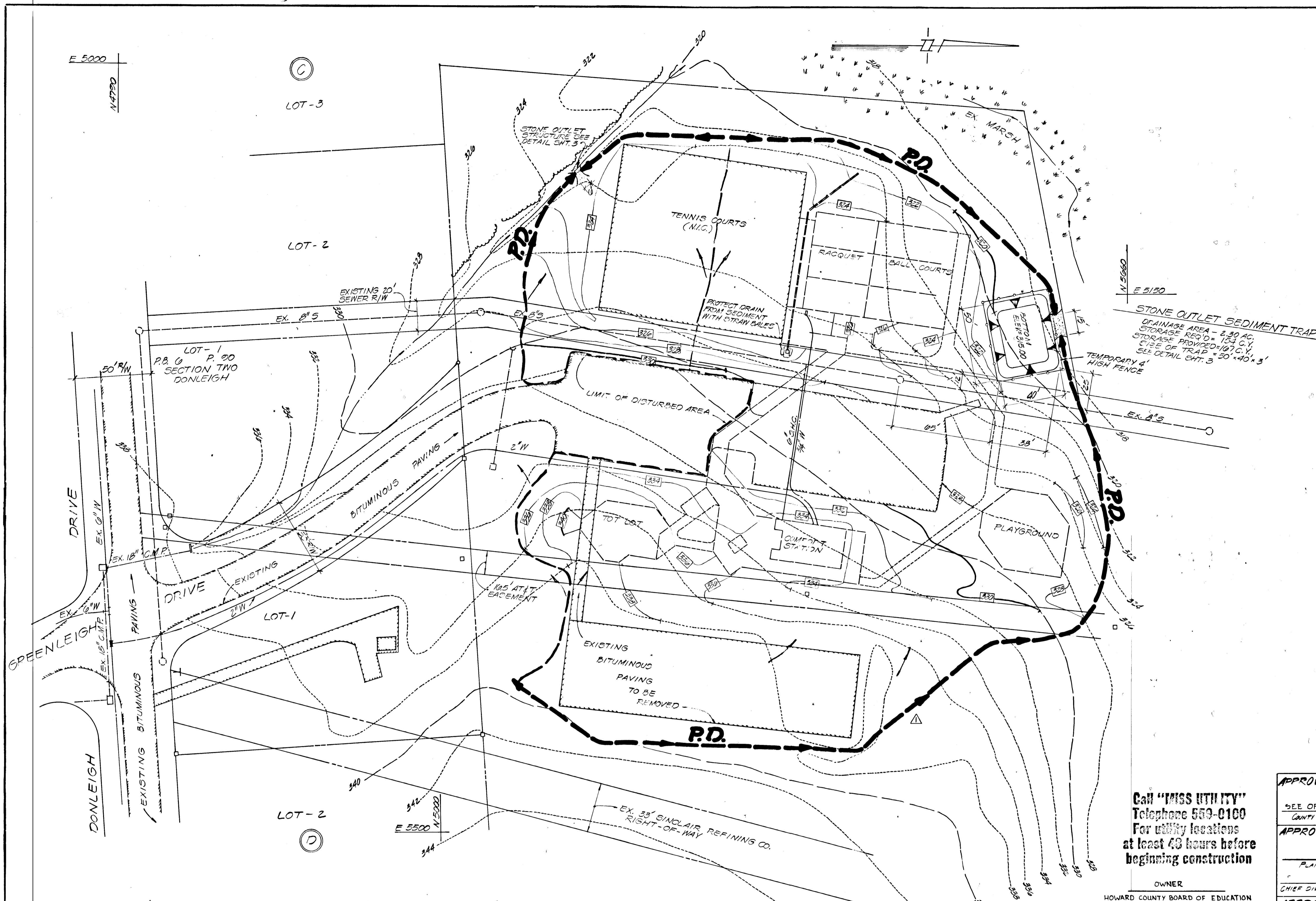
DEPARTMENT OF RECREATION & PARKS
HOWARD COUNTY, MARYLAND
11-5-79 DATE
Director

CAPITAL PROJECT N-7-3025

SITE DEVELOPMENT PLAN

ATHOLTON NEIGHBORHOOD PARK
TAX MAP 36 LIBER 346 ELECTION DISTRICT #5
PARCEL 240 FOLIO 487 COLUMBIA, MARYLAND

DRAWING	SCALE	DATE
NO. 1 OF 5	1"=30'	11/5/79



SITE ANALYSIS

TOTAL AREA OF SITE: 11.01 AC
 TOTAL DISTURBED AREA: 5.94 AC
 TOTAL EX. IMPERVIOUS AREA: 54 FT.
 TOTAL PROPOSED IMPERVIOUS AREA:
 NET INCREASE IMPERVIOUS AREA:
 TOTAL REVEGETATED AREA:

NOTE: REVISION TO SDP 79-81

THESE PLANS HAVE BEEN REVIEWED FOR THE HOWARD SOIL CONSERVATION DISTRICT AND MEET THE TECHNICAL REQUIREMENTS.

James Helms 11-6-79
 SIGNATURE DATE
 U.S. SOIL CONSERVATION SERVICE

THIS DEVELOPMENT PLAN IS APPROVED FOR SOIL EROSION AND SEDIMENT CONTROL BY THE HOWARD SOIL CONSERVATION DISTRICT.

APPROVED *Richard Zilber* 11-6-79
 SIGNATURE DATE
 HOWARD S.C.O.

Call "MISS UTILITY"
 Telephone 580-0100
 For utility locations
 at least 48 hours before
 beginning construction

OWNER
 HOWARD COUNTY BOARD OF EDUCATION

DEVELOPER
 HOWARD CO. DEPT. OF RECREATION AND PARKS
 GEORGE HOWARD BUILDING
 3430 COURT HOUSE DRIVE
 ELICOTT CITY, MD. 21043
 TEL: (301) 592-2480

DEVELOPER'S CERTIFICATION

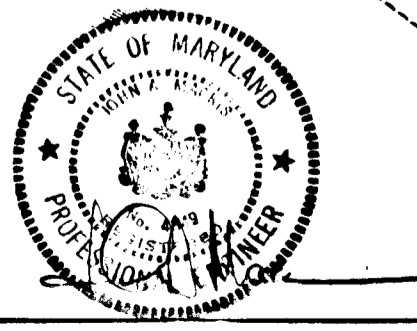
I CERTIFY THAT ALL DEVELOPMENT AND/OR CONSTRUCTION WILL BE DONE IN ACCORDANCE WITH THIS PLAN OF DEVELOPMENT AND PLAN FOR EROSION AND SEDIMENT CONTROL AND ALSO WITH THE PERIODIC ON-SITE INSPECTION BY HOWARD SOIL CONSERVATION DISTRICT AND THE SIGNATURE AGENTS AS AID DEEMED NECESSARY. DEVIATION FROM THIS PLAN WILL NOT BE MADE UNLESS AUTHORIZED BY THE HOWARD SOIL CONSERVATION DISTRICT.

W. J. Bennett 11-5-79
 SIGNATURE OF DEVELOPER DATE

ENGINEER'S CERTIFICATION

I CERTIFY THAT THIS PLAN FOR EROSION AND SEDIMENT CONTROL REPRESENTS A PRACTICAL AND MARKABLE PLAN BASED ON MY PERSONAL KNOWLEDGE OF THE SITE CONDITIONS AND THAT IT HAS BEEN PREPARED IN ACCORDANCE WITH THE REQUIREMENTS OF THE HOWARD SOIL CONSERVATION DISTRICT.

Q. Mac 10-25-79
 SIGNATURE OF ENGINEER DATE



10-24-79 Rev. to Perimeter Dike
 No. Date Revision

BENNETT - JOLSON & ASSOCIATES AIA ARCHITECTS PLANNERS
 COLUMBIA, MARYLAND TEL. 301-730-1766

MACRIS, HENDRICKS AND WITMER, P.A.
 ENGINEERS, SURVEYORS, PLANNERS
 15209 FREDERICK ROAD ROCKVILLE, MD 20850 TEL. (301)-340-8705

DEPARTMENT OF RECREATION & PARKS
 HOWARD COUNTY, MARYLAND
 11-5-79 DATE
 Director

CAPITAL PROJECT N-7-3025

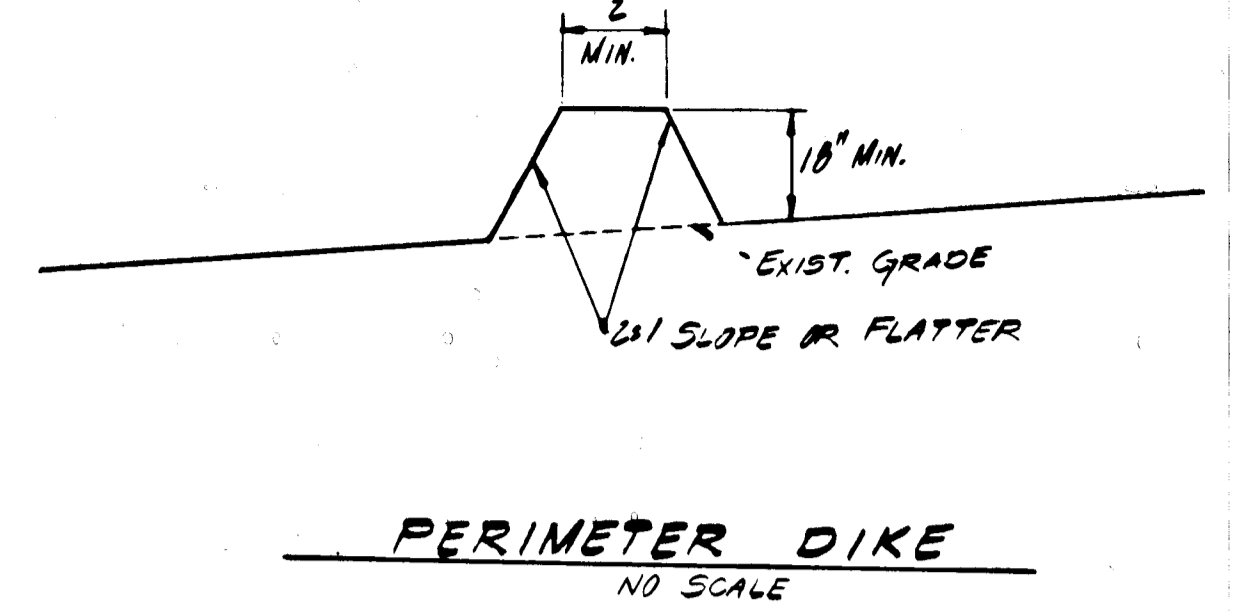
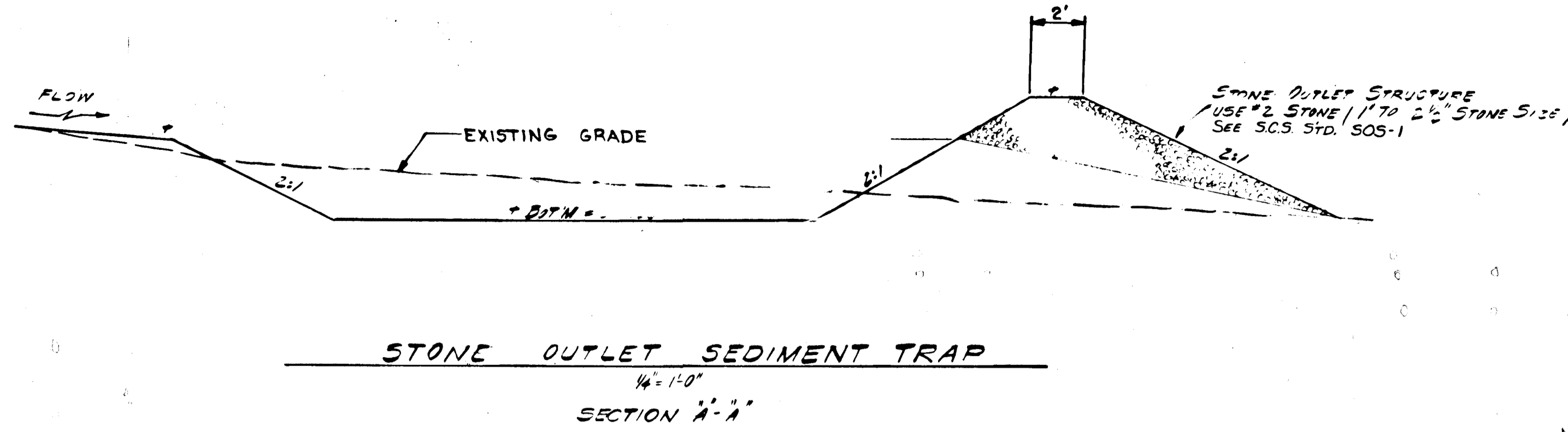
SITE DEVELOPMENT PLAN

ATHOLTON NEIGHBORHOOD PARK
 TAX MAP 36 LIBER 346 ELECTION DISTRICT #5
 PARCEL 240 FOLIO 487 COLUMBIA, MARYLAND

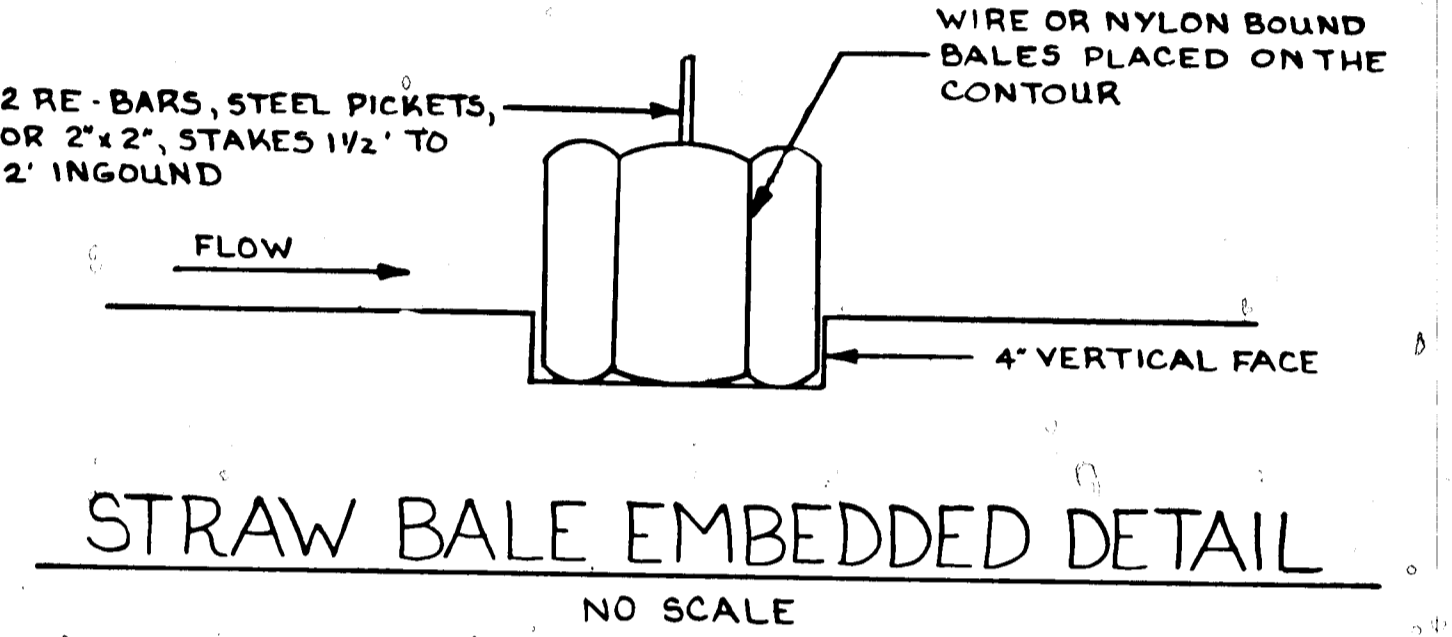
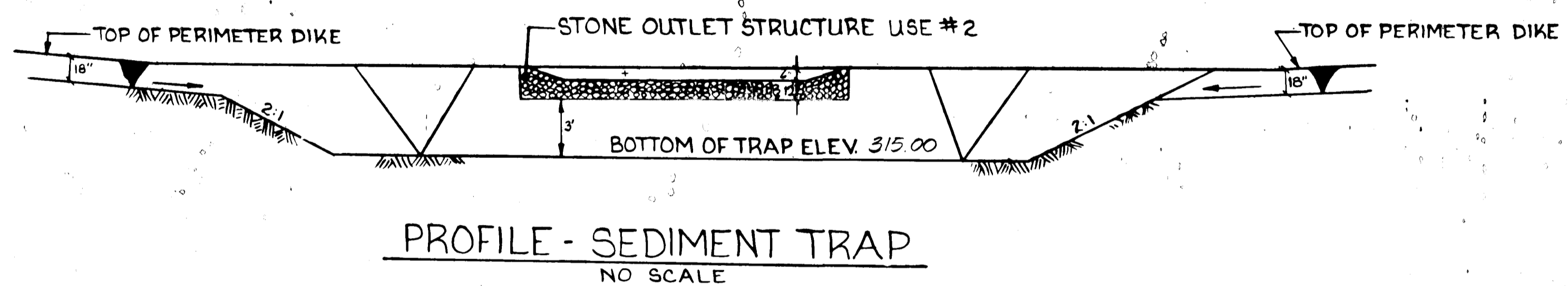
DRAWING NO. 2 OF 5 SCALE 1"=30' DATE 11-5-79

SOIL EROSION AND SEDIMENT CONTROL NOTES

1. ALL SOIL EROSION AND SEDIMENT CONTROL MEASURES SHALL BE CONSTRUCTED PRIOR TO ANY GRADING AT THE SITE.
2. ALL SEDIMENT CONTROL MEASURES ARE TO REMAIN IN PLACE UNTIL PERMISSION FOR THEIR REMOVAL HAS BEEN OBTAINED FROM THE BUREAU OF INSPECTIONS AND PERMITS PHONE 992-4435.
3. NOTIFY THE BUREAU OF INSPECTION AND PERMITS AT LEAST 24 HOURS BEFORE THE START OF ANY WORK. PHONE 992-2435.
4. CONTINUED INSPECTION AND MAINTENANCE WILL BE THE RESPONSIBILITY OF THE DEVELOPER.
5. ALL SEDIMENT CONTROL MEASURES SHALL CONFORM TO THE STANDARDS & SPECIFICATIONS IN URBANIZING AREAS AND AS SHOWN AND DETAILED ON THIS PLAN.
6. SEED OR SOO ALL EXPOSED SOIL IN GRASS AREAS WITHIN 72 HRS. OF GRADING TO FINISHED GRADE IN ACCORDANCE WITH M.S.C.D. STANDARDS AND SPECIFICATIONS AND THESE NOTES. LAY BASS COURSE IN PAVED AREAS OR PROTECT WITH BITUMINOUS MULCH OR OTHER METHODS APPROVED BY THE ENGINEER WITHIN 72 HOURS OF FINISH GRADING.
7. TEMPORARY SEEDING
 - GROUND LIMESTONE - 3500 LBS./AC. WORK INTO TOP 3" OF SOIL
 - FERTILIZER - 1300 LBS./AC. 10-10-10
 - MULCH - 3000 LBS./AC. STRAW (WHEAT PREFERRED)
 - SEED - 40 LBS./AC. RYE GRASS
 - BINDER - ASPHALT SPRAY OR MULCH @ RATE OF 1 GAL. PER 1000 SQ. FT.
 - ALTERNATE - MICROSEED FERTILIZER, SEED AND MULCH USING "TURFIBER" OR APPROVED EQUAL.
8. PERMANENT SEEDING
 - GROUND LIMESTONE - 1000 LBS./AC. WORK INTO TOP 3" OF SOIL
 - FERTILIZER - 1300 LBS./AC. 10-10-10
 - SEED - 90% KENTUCKY 31 TALL FESCUE
8% RYE GRASS
2% MERION BLUEGRASS
 - SEEDING RATE - 150 LBS./AC.
 - BINDER - MICROSEED FERTILIZER, SEED AND BINDER USING "TURFIBER" OR APPROVED EQUAL.
9. FOR ALL SLOPES STEEPER THAN 3:1 USE DOWN VEGETATION 15 LBS./AC. KENTUCKY 31 @ 40 LBS./AC.



- SODDING NOTES**
1. APPLY 10-10-10 FERTILIZER @ 1000 LBS./AC. (25 LBS./1000 SQ. FT.)
 2. APPLY GROUND AGRICULTURE LIMESTONE @ 2000 LBS./AC. (50-B./1000 SQ. FT.)
 3. INCORPORATE BOTH LIME AND FERTILIZER INTO SOIL BY DIGGING, FIRM UP AFTER INCORPORATION.
 4. LAY SOO TO A TIGHT FIT ROLL TO ENSURE CONTACT WITH UNDER LYING SOIL. WATER AS NECESSARY FOR FIRST TWO WEEKS (IN SUMMER) TO ENSURE ESTABLISHMENT.



SEQUENCE OF CONSTRUCTION

1. CONTRACTOR SHALL OBTAIN BUILDING PERMIT.
2. CONSTRUCT AND MAINTAIN ALL SOIL EROSION AND SEDIMENT CONTROL STRUCTURES PRIOR TO ANY OTHER SITE DISTURBANCE.
3. PROCEED WITH SITE GRADING AND BUILDING CONSTRUCTION.
4. AS VARIOUS AREAS ARE BROUGHT TO FINAL GRADE, PLACE TOP SOIL, SOO/SEED GRASSED AREAS AND HAVE OTHER AREAS IN CONFORMANCE WITH THESE PLANS AND THE "SOIL EROSION AND SEDIMENT CONTROL NOTES".
5. CONSTRUCT WATER AND SEWER CONNECTIONS AS SHOWN ON THESE PLANS.
6. UPON COMPLETION OF FINE GRADING AND STABILIZATION OF SITE, ALL SEDIMENT CONTROL STRUCTURES SHALL BE REMOVED.

NOTE: REVISION TO SDP 79-21

THESE PLANS HAVE BEEN REVIEWED FOR THE HOWARD SOIL CONSERVATION DISTRICT AND MEET THE TECHNICAL REQUIREMENTS.

James Helms 11-6-79
SIGNATURE DATE
U.S. SOIL CONSERVATION SERVICE

THIS DEVELOPMENT PLAN IS APPROVED FOR SOIL EROSION AND SEDIMENT CONTROL BY THE HOWARD SOIL CONSERVATION DISTRICT.

APPROVED *Robert J. Helms* 11-6-79
SIGNATURE DATE
HOWARD S.C.D.

APPROVED FOR PUBLIC WATER AND PUBLIC SEWERAGE SYSTEMS
HOWARD COUNTY HEALTH DEPARTMENT

SEE ORIGINAL APPROVAL
COUNTY HEALTH OFFICER 7-10-79
DATE

APPROVED HOWARD COUNTY OFFICE OF PLANNING AND ZONING
PLANNING DIRECTOR DATE

CHIEF DIVISION OF LAND DEVELOPMENT DATE

APPROVED FOR PUBLIC WATER AND PUBLIC SEWERAGE, STORM DRAINAGE SYSTEMS AND PUBLIC ROADS
COUNTY DEPARTMENT OF PUBLIC WORKS

George F. Neumann 11-5-79
DIRECTOR DATE

Allen S. Brown 11/5/79
CHIEF BUREAU OF ENGINEERING DATE



BENNETT - JOLSON & ASSOCIATES AIA ARCHITECTS
COLUMBIA, MARYLAND TEL 301-730-1766

MACRIS, HENDRICKS AND WITMER, P.A.
ENGINEERS, SURVEYORS, PLANNERS
15209 FREDERICK ROAD ROCKVILLE, MD 20850 TEL (301)-340-8705

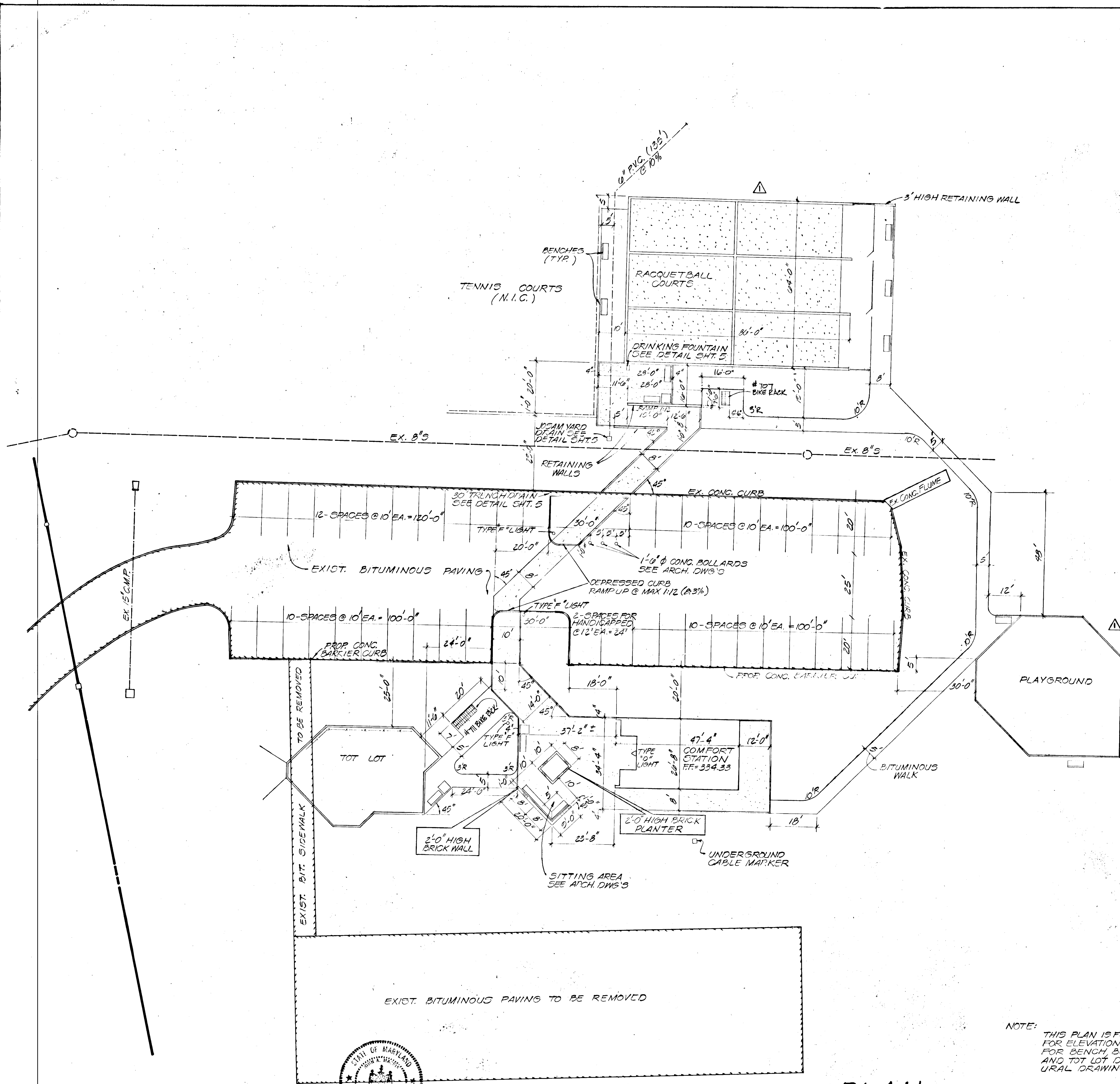
DEPARTMENT OF RECREATION & PARKS
HOWARD COUNTY, MARYLAND
11-5-79 DATE
Robert J. Helms DIRECTOR

CAPITAL PROJECT N-7-3025

SITE DEVELOPMENT PLAN

ATHOLTON NEIGHBORHOOD PARK
TAX MAP 36 PARCEL 240
LIBER 346 FOLIO 487
ELECTION DISTRICT #5 COLUMBIA, MARYLAND

DRAWING NO. 3 OF 5
SCALE 1" = 10'
DATE 10/24/79
SHOWN 78-311



LEGEND

PROPOSED 4" BITUMINOUS PAVING	[Pattern]
PROPOSED UNSTONE CONC. PAVER	[Pattern]
PROPOSED CONC. BARRIER CURB	[Pattern]
PROPOSED CONC. PAVING	[Pattern]

NOTE: REVISION TO SDP 79-81

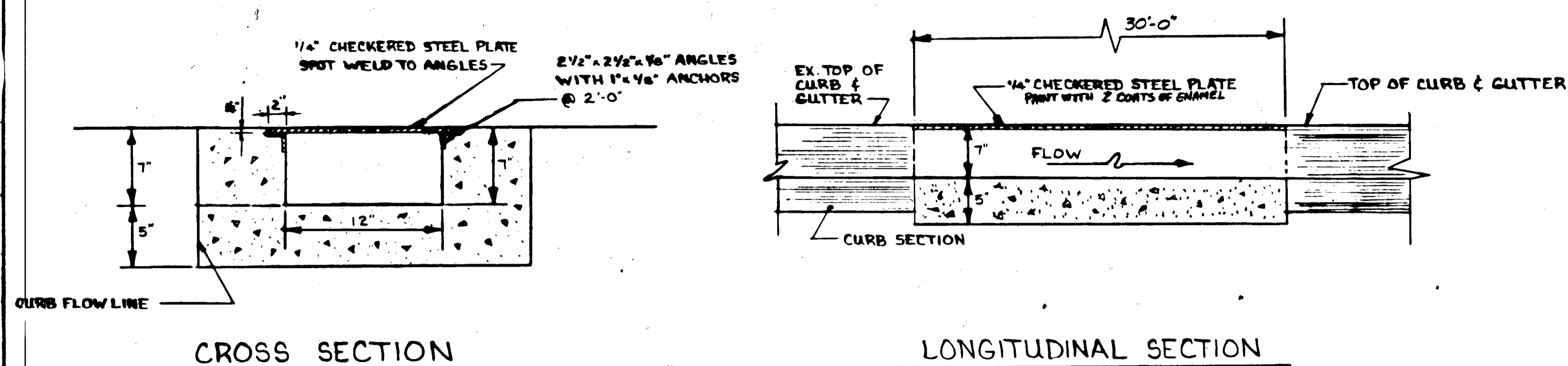
APPROVED FOR PUBLIC WATER AND PUBLIC SEWERAGE SYSTEMS HOWARD COUNTY HEALTH DEPARTMENT	7-10-79
SEE ORIGINAL APPROVAL COUNTY HEALTH OFFICER	DATE
APPROVED HOWARD COUNTY OFFICE OF PLANNING AND ZONING	7-12-79
SEE ORIGINAL APPROVAL PLANNING DIRECTOR	DATE
SEE ORIGINAL APPROVAL CHIEF DIVISION OF LAND DEVELOPMENT	7-11-79
DATE	
APPROVED FOR PUBLIC WATER AND PUBLIC SEWERAGE, STORM DRAINAGE SYSTEMS AND PUBLIC ROADS, HOWARD COUNTY DEPARTMENT OF PUBLIC WORKS	11-5-79
George F. Neumeier DIRECTOR	DATE
Allen J. Brown CHIEF BUREAU OF ENGINEERING	11/5/79
DATE	

NOTE: THIS PLAN IS FOR DIMENSIONS ONLY.
FOR ELEVATIONS SEE SHEET 1 OF 5.
FOR BENCH, BOLLARD, PLAYGROUND
AND TOT LOT DETAILS SEE ARCHITECT-
URAL DRAWING'S

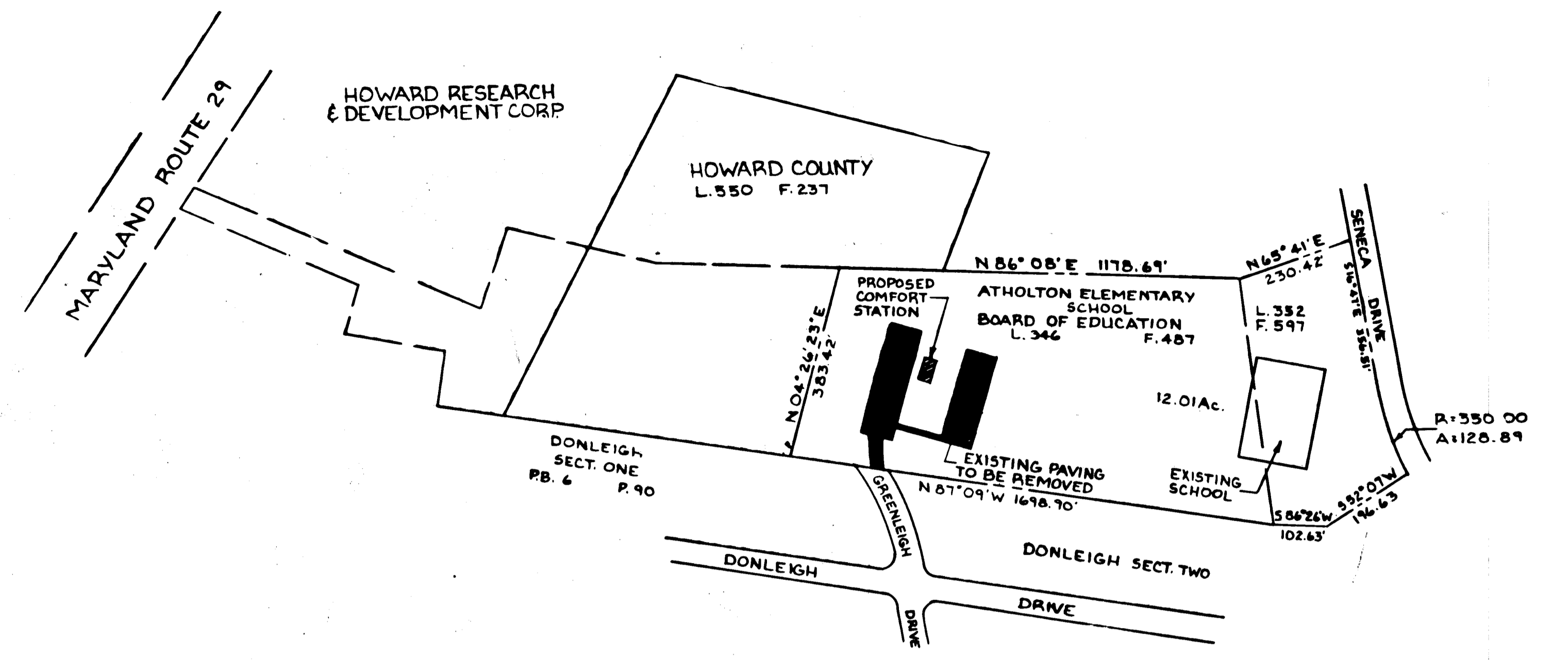
PLAN
SCALE: 1"=20'

10-24-79	Relocate Racquet Ball Cts & Playground
No.	Date
	Revision

BENNETT-JOLSON & ASSOCIATES AIA ARCHITECTS COLUMBIA, MARYLAND TEL. 301-730-1766	MACRIS, HENDRICKS AND WITMER, P.A. ENGINEERS, SURVEYORS, PLANNERS 15209 FREDERICK ROAD ROCKVILLE, MD. 20850 TEL. (301)-340-8705	DEPARTMENT OF RECREATION & PARKS HOWARD COUNTY, MARYLAND 11-5-79 DATE [Signature] DIRECTOR	CAPITAL PROJECT N-7-3025	SITE DEVELOPMENT PLAN	ATHOLTON NEIGHBORHOOD PARK TAX MAP 36 LIBER 346 ELECTION DISTRICT #5 PARCEL 240 FOLIO 487 COLUMBIA, MARYLAND	DRAWING NO. 4 OF 5 SCALE 1"=20' 78-501



TRENCH DRAIN DETAIL
 NO SCALE

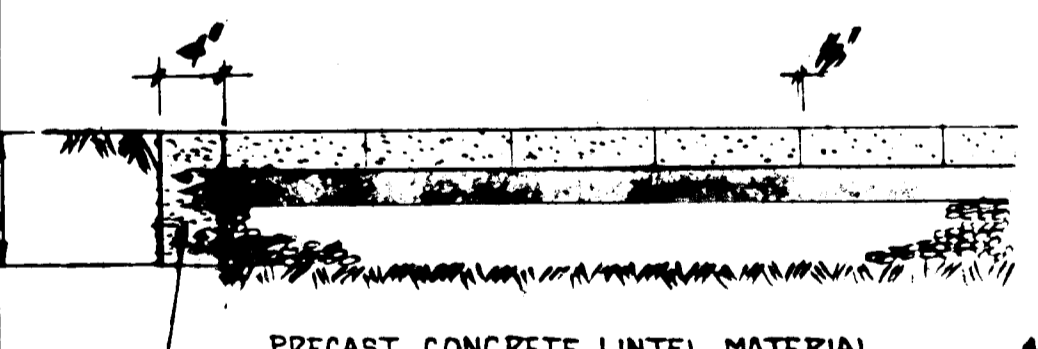


BOUNDARY OUTLINE
 SCALE: 1" = 2000'

1" BITUMINOUS CONCRETE SURFACE - BAND G-3
 3" BITUMINOUS CONCRETE BASE - BAND G-2 OR G-3
 NOTE: SEE HOWARD COUNTY STD. DETAIL DWG. D-13, Pg. 08

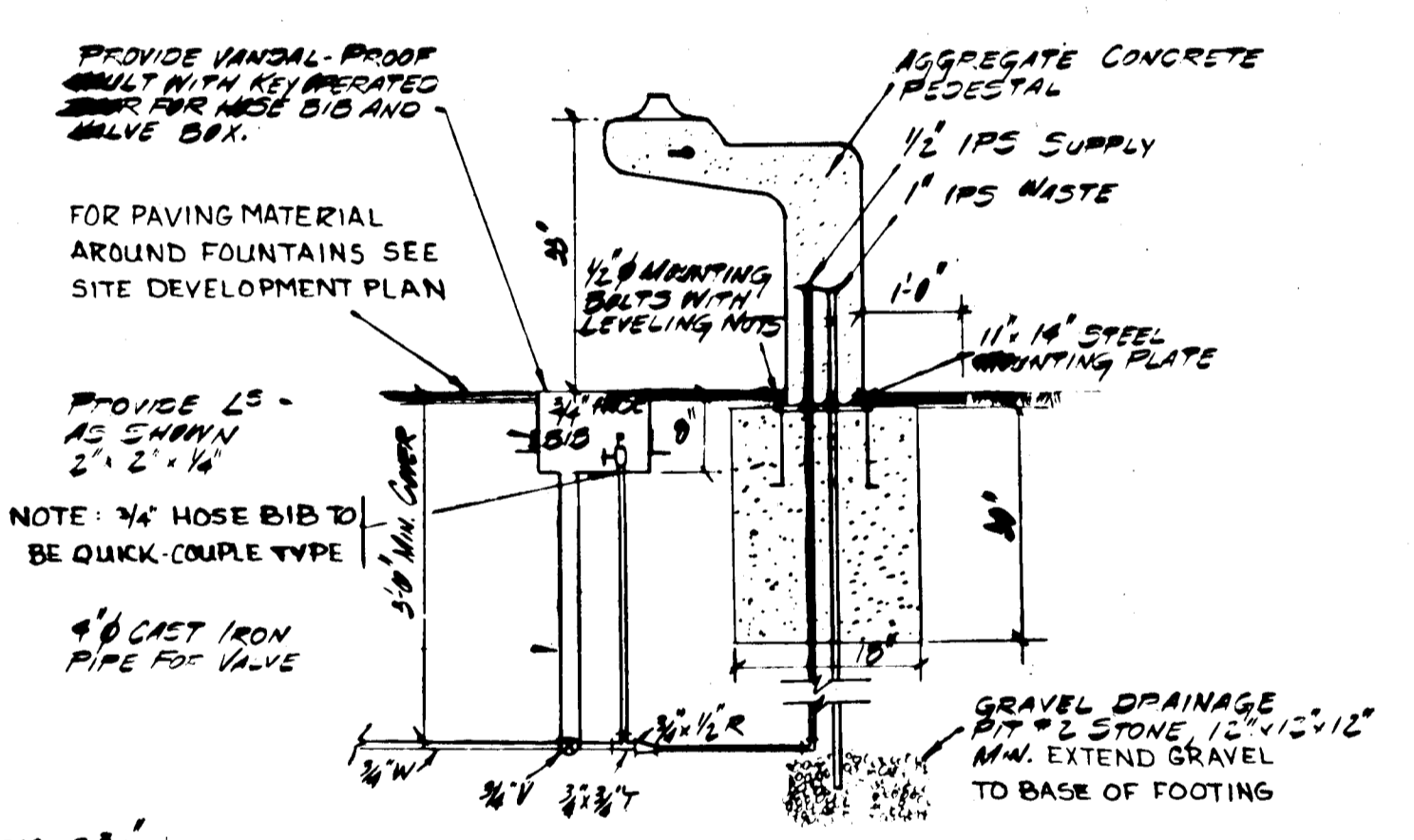
1. THE BASE SHALL BE PRIMED IN ACCORDANCE WITH SECTION C-30-3 AS PROVIDED IN THE MARYLAND ROAD CONSTRUCTION CODE AND STANDARD SPECIFICATIONS.
 2. TACK COAT IS REQUIRED IN ACCORDANCE WITH SECTION C-31-4 OF THE MARYLAND ROAD CONSTRUCTION CODE AND STANDARD SPECIFICATIONS.
 3. ALL CONSTRUCTION AND MATERIALS SHALL BE IN ACCORDANCE WITH THE REQUIREMENTS OF THE MARYLAND ROAD CONSTRUCTION CODE AND STANDARD SPECIFICATIONS.

BITUMINOUS PAVING DETAIL

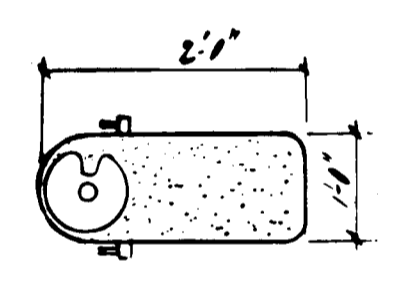


CONCRETE PAVER DETAIL
 NO SCALE

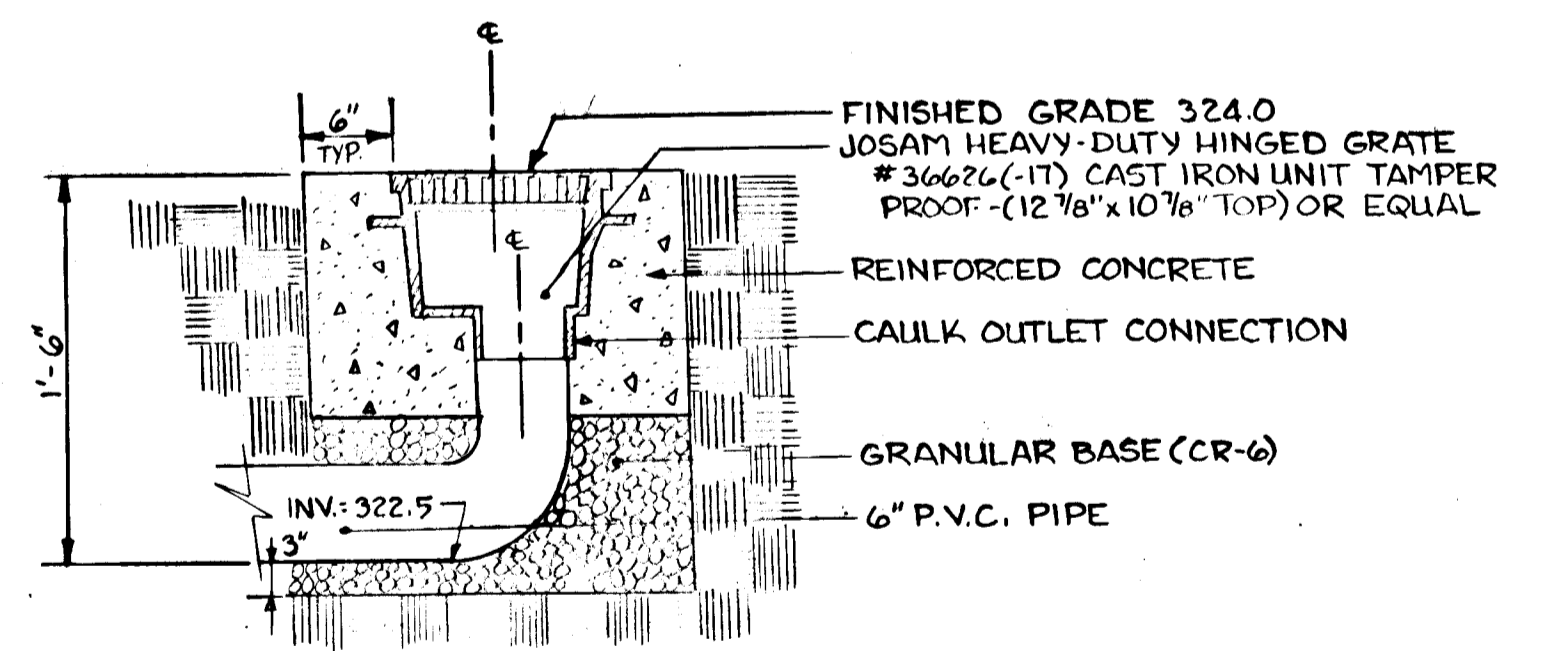
NOTE: 1. TAMP DOWN AND LEVEL THE PAVERS WITH MECHANICAL VIBRATORS UNTIL PAVERS ARE UNIFORMLY LEVEL TRUE TO GRADE AND FREE OF ANY MOVEMENT.
 2. FILL ALL VIDS IN THE PAVER JOINTS BY SWEEPING IN DRY, SHARP SAND.



DRINKING FOUNTAIN - HANDICAP
 NO SCALE

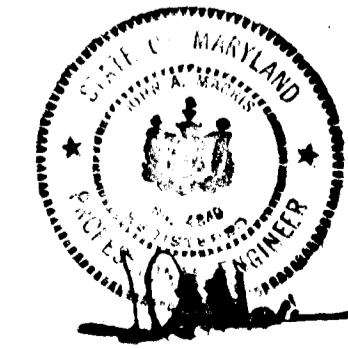


NOTE: WIRE MESH 317 1/2" NATURAL COLOR STAINLESS STEEL RECEPTOR OR BUZZER & BOTTOM PLATE VANDAL RESISTANT.



YARD DRAIN DETAIL
 NO SCALE

APPROVED FOR PUBLIC WATER AND PUBLIC SEWERAGE SYSTEMS HOWARD COUNTY HEALTH DEPARTMENT	SEE ORIGINAL APPROVAL COUNTY HEALTH OFFICER	7-10-79 DATE
APPROVED HOWARD COUNTY OFFICE OF PLANNING AND ZONING	SEE ORIGINAL APPROVAL PLANNING DIRECTOR	7-12-79 DATE
APPROVED FOR PUBLIC WATER AND PUBLIC SEWERAGE STORM DRAINAGE SYSTEMS AND PUBLIC ROADS HOWARD COUNTY DEPARTMENT OF PUBLIC WORKS	SEE ORIGINAL APPROVAL CHIEF DIVISION OF LAND DEVELOPMENT	7-11-79 DATE
George F. Neamey DIRECTOR	11-5-79 DATE	
Allen L. Brown CHIEF DIVISION OF ENGINEERING	11-5-79 DATE	



NOTE: REVISION TO SDP 79-81

BENNETT - JOLSON & ASSOCIATES AIA ARCHITECTS COLUMBIA, MARYLAND TEL. 301-730-1766	MACRIS, HENDRICKS AND WITMER, P.A. ENGINEERS, SURVEYORS, PLANNERS 15209 FREDERICK ROAD, ROCKVILLE, MD 20850 TEL. (301)-340-8705	DEPARTMENT OF RECREATION & PARKS HOWARD COUNTY, MARYLAND 11-5-79 DATE W. J. ... DIRECTOR	CAPITAL PROJECT N-7-3025 SITE DEVELOPMENT PLAN	ATHOLTON NEIGHBORHOOD PARK TAX MAP 36 LIBER 346 ELECTION DISTRICT #5 PARCEL 240 FOLIO 487 COLUMBIA, MARYLAND	DRAWING NO. 5 OF 5 SCALE A5 SHOWN 10/24/79 78-501
---	--	---	--	--	--

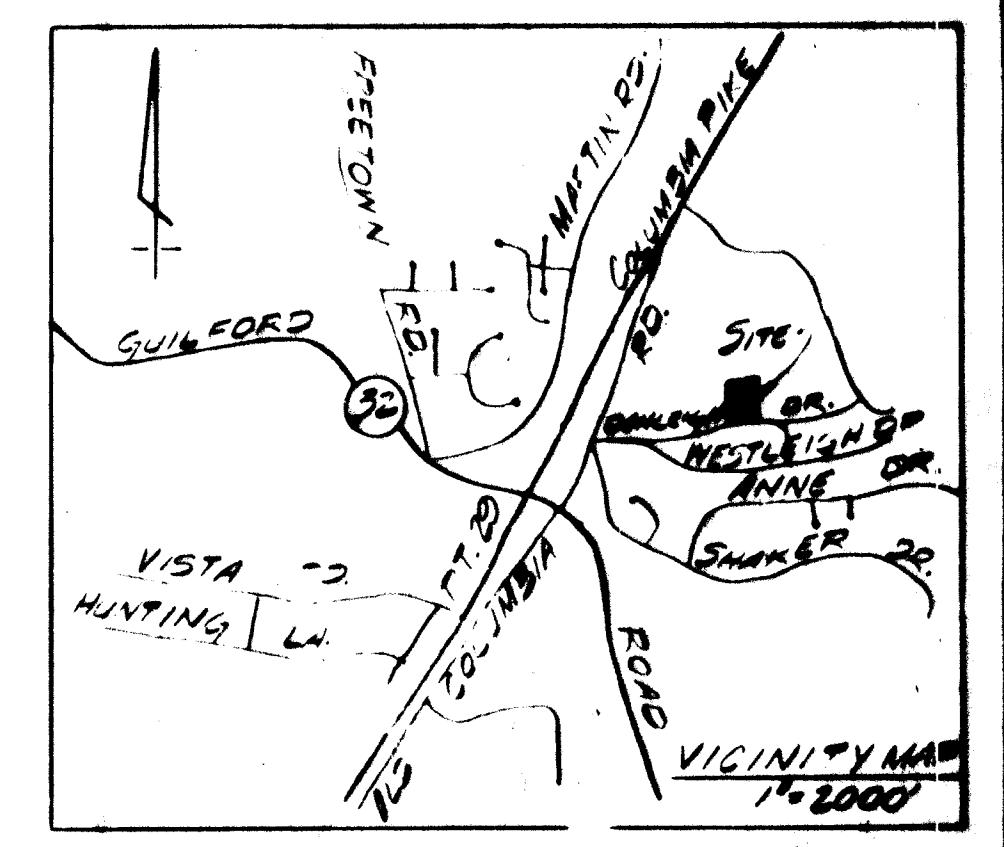
PLANT LIST

QUANTITY	NAME	BOTANICAL / COMMON	SIZE	ROOT	REMARKS
12	Acer saccharum	Green Mountain	2-2 1/2' ht.	B+B	Single Leader
10	Crataegus crusgalli	COCKSPUR HAWTHORN	5-6' ht.	B+B	Clump
4	Malus 'Pink Perfection'	Malus 'Pink Perfection'	6-8' ht.	B+B	Matched
24	Pinus strobus	WHITE PINE	5-6' ht.	B+B	---
1	Pinus thunbergii	JAPANESE BLACK PINE	6-7' ht.	B+B	Specimen
3	Pinus calleryana 'Bradford'	BRADFORD PEAR	8-10' ht.	B+B	Matched
3	Salix niobe	weeping Golden Willow	8-10' ht.	B+B	---
85	Barberis thunbergii 'Crimson Pigmy'	CRIMSON PYGMY BARBERIS	12-15" ht.	Can	---
36	Myrica pensylvanica	NORTHERN SWEETGUM	18-24" ht.	Can	---
30	Nandina domestica	HEAVENLY BAMBOO	24-30" ht.	Can	---
30	Viburnum plicatum 'Tomentosum'	MARIES DOUBLEFILE VIBURNUM	18-24" ht.	Can	---

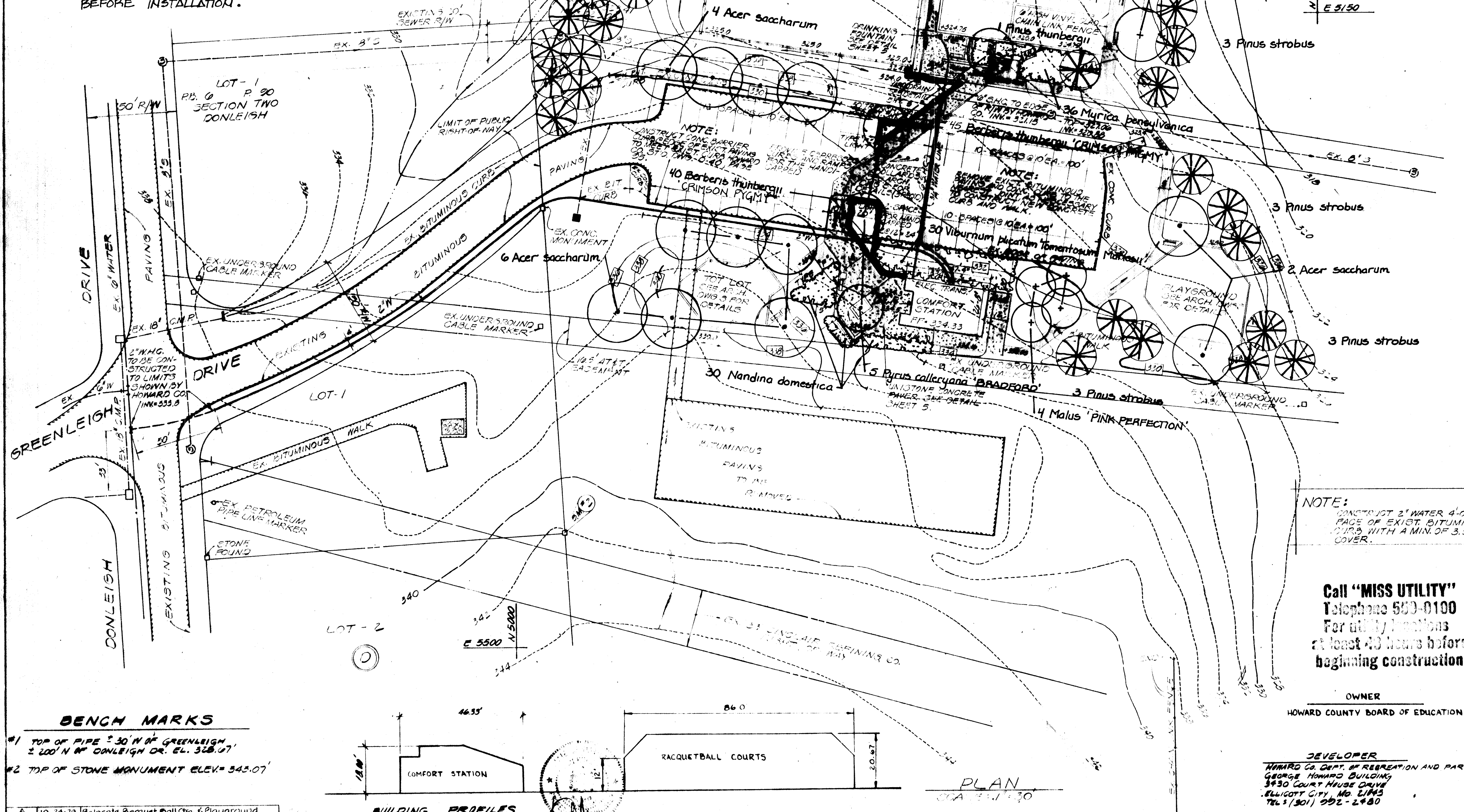
NOTE: ALL PLANT LOCATIONS ARE TO BE VERIFIED IN THE FIELD BEFORE INSTALLATION.

LIGHTING EXTERNAL FIXTURES

TYPE	MANUF. & CAT. #	LAMP	REMARKS
D	BENJAMIN NO. 8542	1-150WA-23	ADJUST AS DIRECTED
F	HOLDEAST NO. 3173-A-100-120V-87-LE	1-LU-100BD	BOLLARD MOUNTING



4" ELEC. CONDUIT SHALL HAVE A MINIMUM OF 1' COVER



LEGEND

- 3/8" --- EXISTING CONTOURS
- 3/8" --- PROPOSED CONTOURS
- PROPOSED 4" BIT. PAVING
- PROPOSED CONCRETE PAVEMENT
- PROPOSED CONCRETE BARRIER CURB
- PROPOSED CONCRETE PAVING
- EXIST. BITUMINOUS PAVING

SITE ANALYSIS

TOTAL AREA OF SITE 12.01 AC.
 ZONING R-20
 TOTAL DISTURBED AREA 80,050 SQ. FT.
 TOTAL REVEGETATED AREA 22,890 SQ. FT.
 TOTAL BUILDING COVERAGE 1135.5 SQ. FT.
 TOTAL NUMBER OF TENNIS COURTS - 2
 TOTAL NUMBER OF PROP. RACKETBALL COURTS - 6

PARKING SCHEDULE

PARKING REQUIRED - 4 SPACES/COURT = 24 SPACES
 RACKETBALL 4 SPACES/COURT = 24 SPACES

TOTAL REQUIRED 52 SPACES

PARKING PROVIDED - 2 HANDICAPPED SPACES @ 12' x 20' = 2 SPACES
 10' x 20' SPACES = 42 SPACES
 TOTAL PROVIDED = 44 SPACES

NOTE: REVISION TO SDP 79-81

APPROVED FOR PUBLIC WATER AND PUBLIC SEWERAGE SYSTEMS
 HOWARD COUNTY HEALTH DEPARTMENT

SEE ORIGINAL APPROVAL 7-10-79
 COUNTY HEALTH OFFICER DATE

APPROVED HOWARD COUNTY OFFICE OF PLANNING AND ZONING

SEE ORIGINAL APPROVAL 7-12-79
 PLANNING DIRECTOR DATE

SEE ORIGINAL APPROVAL 7-11-79
 CHIEF DIVISION OF LAND DEVELOPMENT DATE

APPROVED FOR PUBLIC WATER AND PUBLIC SEWERAGE SYSTEMS
 DRAINAGE SYSTEMS AND PUBLIC ROADS HOWARD COUNTY DEPARTMENT OF PUBLIC WORKS

11-5-79
 DIRECTOR DATE

11/5/79
 CHIEF BUREAU OF ENGINEERING DATE

NOTE: CONSTRUCT 2" WATER 4'-0" OFF FACE OF EXIST. BITUMINOUS CURB WITH A MIN. OF 3.5" OF COVER.

Call "MISS UTILITY" Telephone 500-0100 For utility locations at least 48 hours before beginning construction

OWNER
 HOWARD COUNTY BOARD OF EDUCATION

DEVELOPER
 HOWARD CO. DEPT. OF RECREATION AND PARKS
 GEORGE HOWARD BUILDING
 3930 COURT HOUSE DRIVE
 ELLICOTT CITY, MD. 21115
 TEL: (301) 992-2480

BENCH MARKS

#1 TOP OF PIPE ± 30' N OF GREENLEIGH ± 200' N OF DONLEIGH DR. EL. 328.07'
 #2 TOP OF STONE MONUMENT ELEV. = 543.07'

