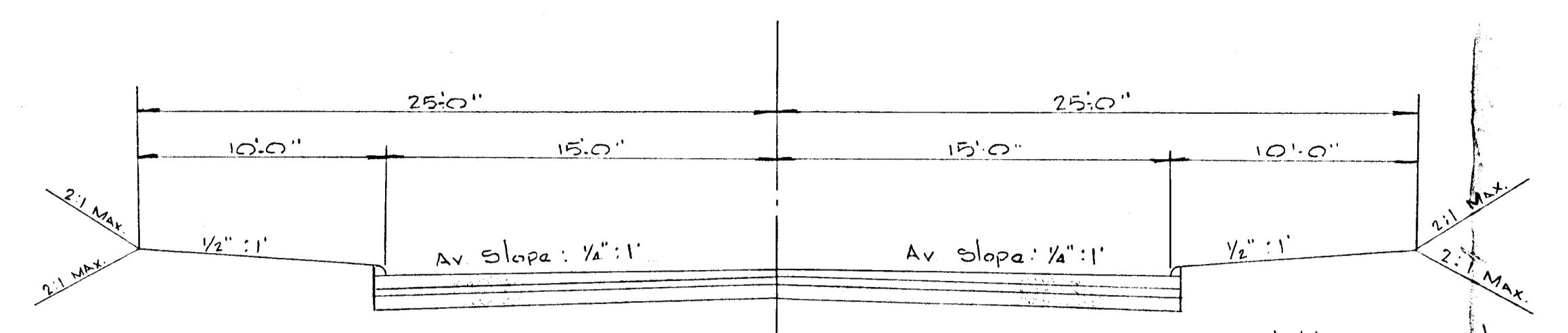
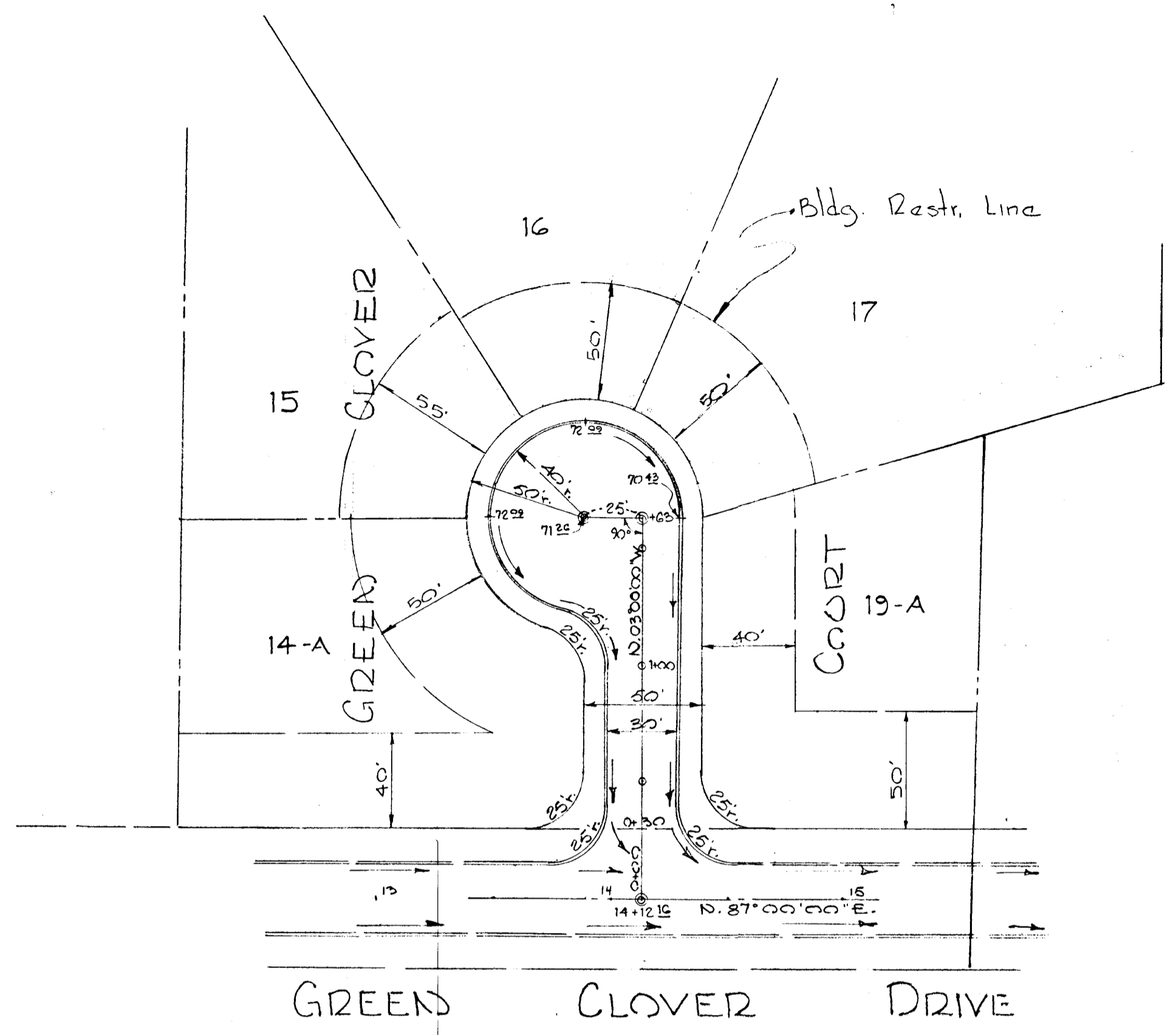


PLAN
 NOTES:
 1. SEE SPECIFICATIONS FOR ALL MATERIALS.
 2. SEE SPECIFICATIONS FOR ALL CONSTRUCTION METHODS.



A. Mountable Curb Sections
 Special P.C.I. Stone Mix
 Over 4%
 Min. 9" of Compacted Bank Run
 Gravel M.S.P.C. Spec. 2 lbs. Calcium
 Chloride Per Sq Yd. Leave 30 Days
 1 1/2" Comp. Spec. "B" Bit Concrete Base
 Course.
 1" Comp. Spec "B" Bit Concrete Surface
 Course. This surface type to be
 constructed in accordance with
 Article C-31 HOWARD COUNTY
 ROAD SPEC.)

GENERAL NOTES
 1) For details of "Bituminous Mountable Curb"
 See the HOWARD COUNTY ROAD CONSTRUCTION
 CODE AND STANDARD SPECS. DWG. D-33,
 Page No 94.

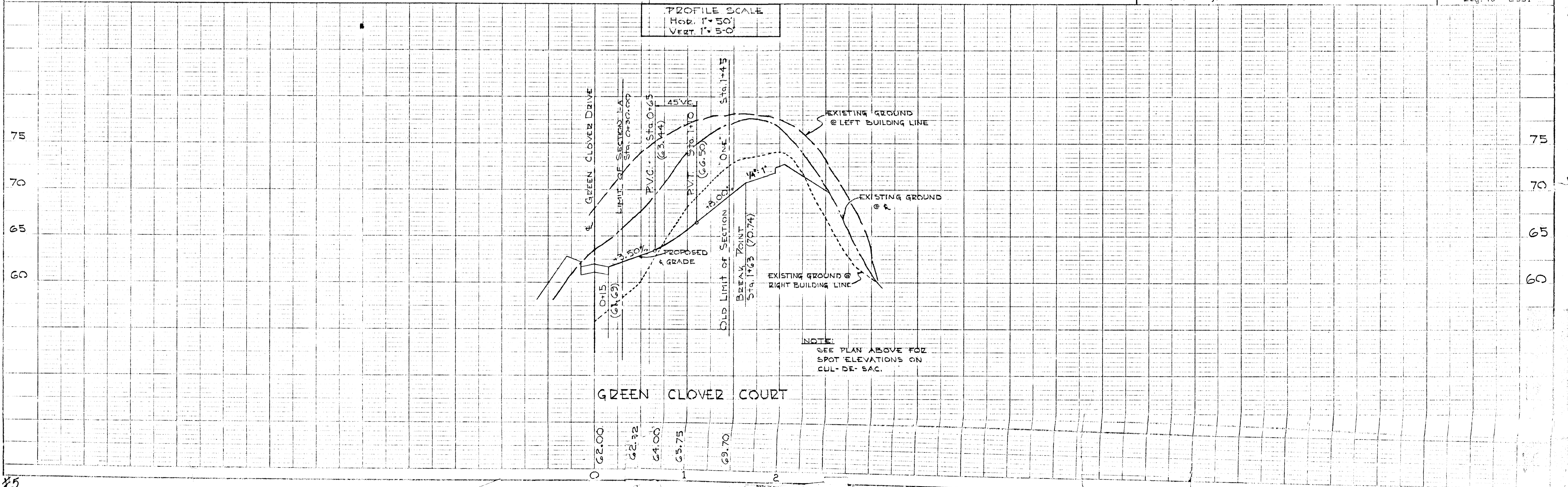
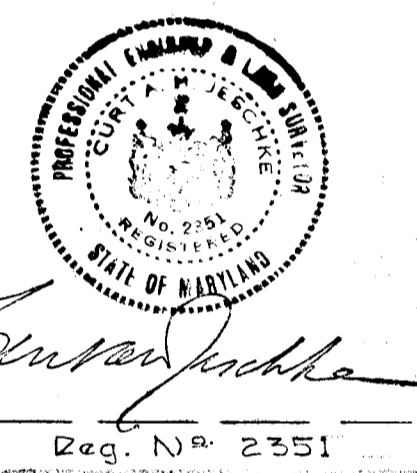
APPROVED: HOWARD COUNTY PLANNING COMM. <i>J. H. Lawson</i> 7-3-67 DATE	PURDUM & JESCHKE ENGINEERS & LAND SURVEYORS 24 PARK AVE. ELLICOTT CITY, MARYLAND
APPROVED: HOWARD COUNTY ROADS DEPT. <i>Hermon S. Hall</i> 6-23-67 DATE	
APPROVED: HOWARD COUNTY METROPOLITAN COMM. <i>W. O. Robert</i> 7-3-67 DATE	

OWNER & DEVELOPER
 The Chamberlea Company
 2620 Frederick Road
 Catonsville, Maryland

31 MAY 1967
 Date

APPROVED
 PLANNING COMMISSION
 OF HOWARD COUNTY
 DATE

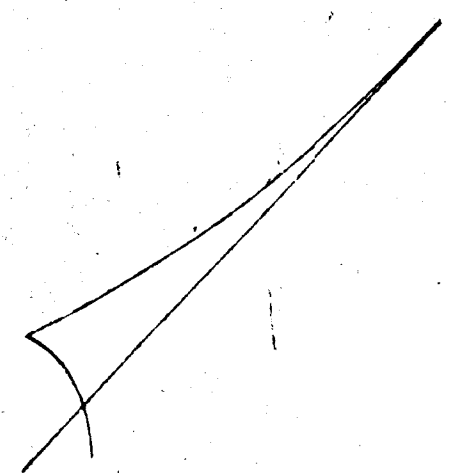
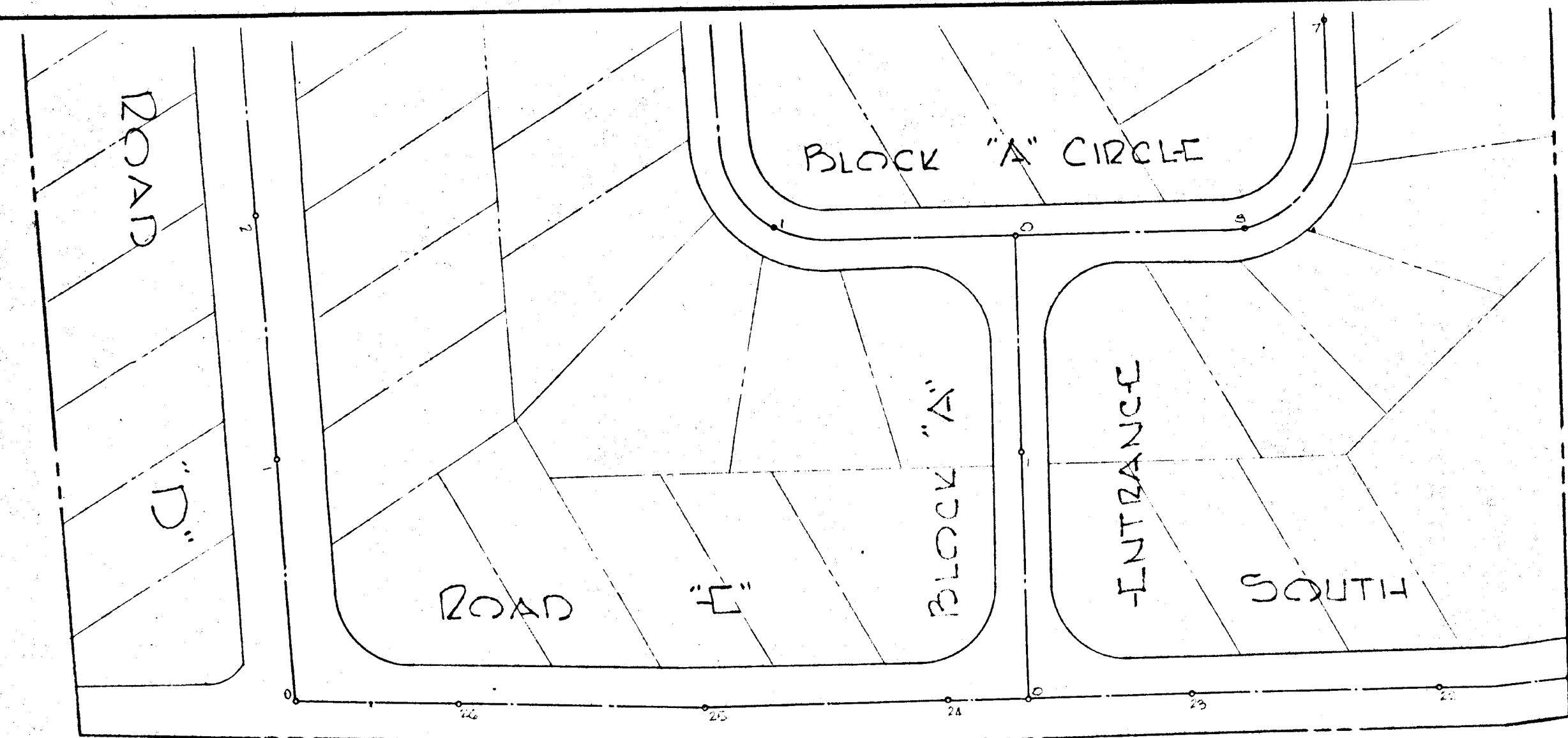
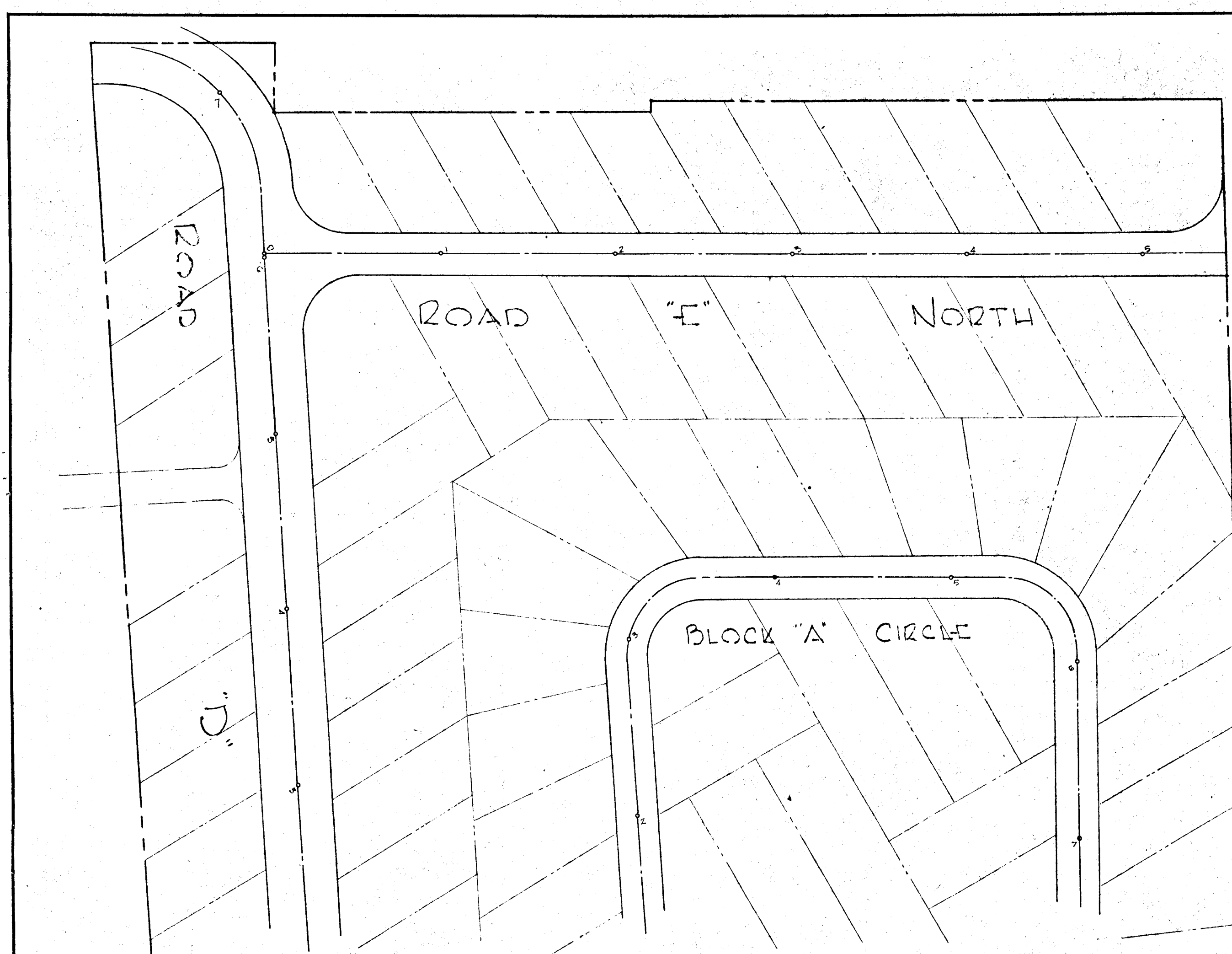
PLAN AND PROFILE: GREEN CLOVER COURT
 SECTION 1-A / RESUBDIVISION OF LOTS 14 & 19-B SECTION 1
 "ALLENFORD"
 SECOND ELECTION DISTRICT HOWARD COUNTY, MD.
 26, APRIL, 1967 SCALE: AS SHOWN



PROFILE
 NOTES:
 1. SEE SPECIFICATIONS FOR ALL MATERIALS.
 2. SEE SPECIFICATIONS FOR ALL CONSTRUCTION METHODS.

PLAN SURVEYED BY DATE
 PLOTTED BY
 NOTE BOOK NO. OF WAY CHECKED

PROFILE SURVEYED BY DATE
 PLOTTED BY
 GRADES CHECKED
 NOTE BOOK NO. OF WAY CHECKED

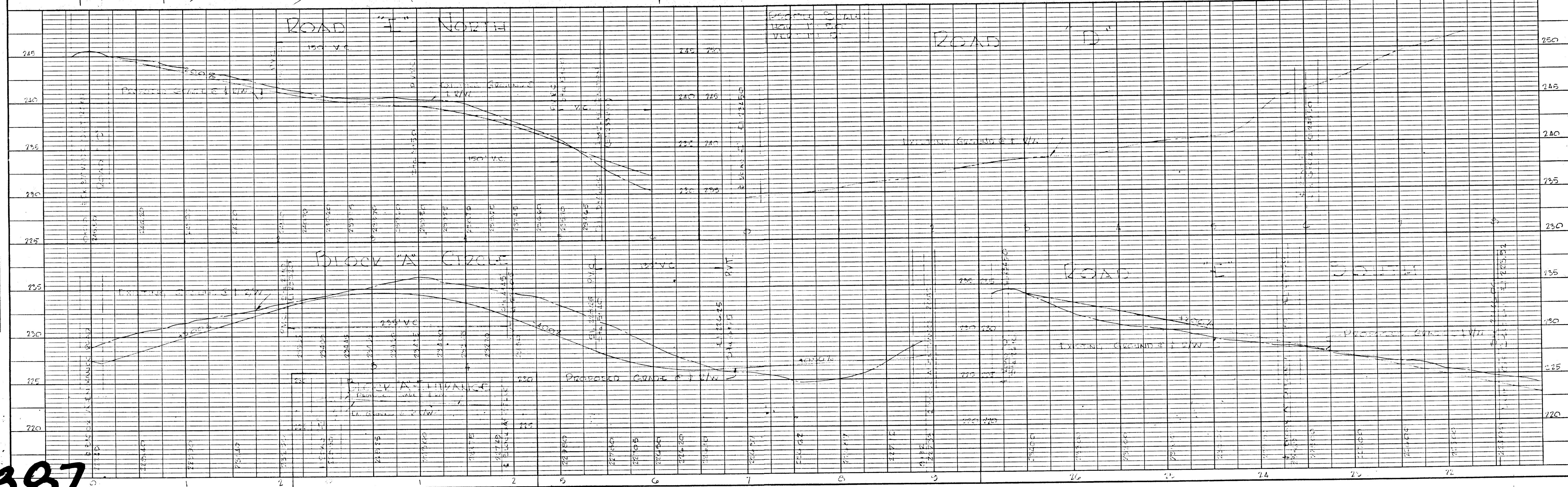
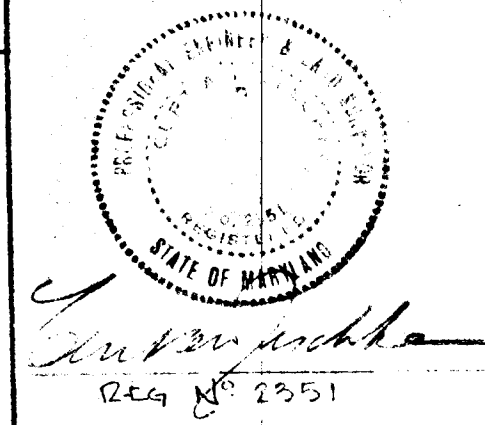


PLAN SCALE: 1" = 50'

RECEIVED
 APR 19 1967
 HOWARD COUNTY
 PLANNING COMMISSION

APPROVED HOWARD COUNTY PLANNING COMM.	DATE	PRUDUM & JESCHKE
Senior Engineer	DATE	ENGINEERS & LAND SURVEYORS
APPROVED HOWARD COUNTY METROPOLITAN AUTH.	DATE	24 PARK AVE.
Road Superintendent	DATE	ELLICOTT CITY, MD.
Chief Engineer	DATE	
OWNER & DEVELOPER CHARLES B. PLATZER & WIFE ALADDIN TRAILER VILLAGE BOX 272 - ROUTE 4 BALTIMORE, MARYLAND, 21227		19 APRIL 1967 DATE

PLAN AND PROFILE OF
 CHARLES B. PLATZER PROPERTY
 ADDITION TO
 ALADDIN TRAILER VILLAGE
 1ST ELECTION DIST. HOWARD COUNTY, MD.
 19 APRIL 1967 SCALE: AS SHOWN



387