

25.7 Ac crossing  
Columbia Pike

N 10.900  
M 8000

NOT INCLUDED IN THIS PLAN OF SUBDIVISION

RECEIVED  
MAY 22 1963  
HOWARD COUNTY  
PLANNING COMMISSION

NOTES:  
Elevations based on S.R.C. Datum  
Contour interval - Two Feet  
Total number of lots - 50  
Minimum lot size - 20,000 sq ft  
All dimensions are scaled and subject  
to adjustment on final plat  
Area of proposed subdivision = 638 acres excluding  
"not included area"  
Gross density =  $\frac{88}{638} = .125$  lots per acre

CHIEF ENGINEER OF THE  
METROPOLITAN COMMISSION OF HOWARD COUNTY

APPROVED BY HOWARD  
COUNTY PLANNING COMM.  
July 9, 1958

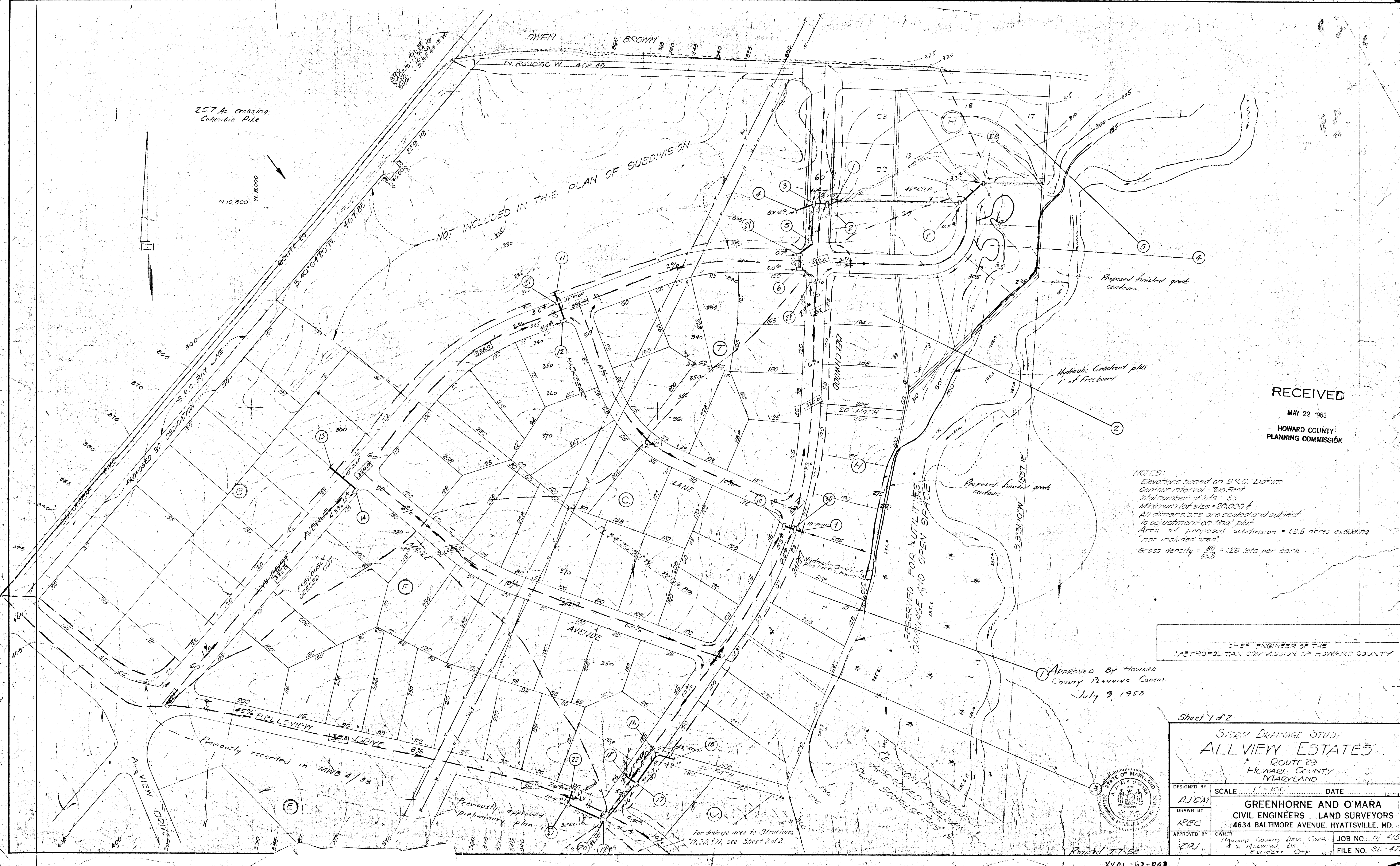
Sheet 1 of 2  
STORM DRAINAGE STUDY  
ALLVIEW ESTATES  
ROUTE 29  
HOWARD COUNTY  
MARYLAND

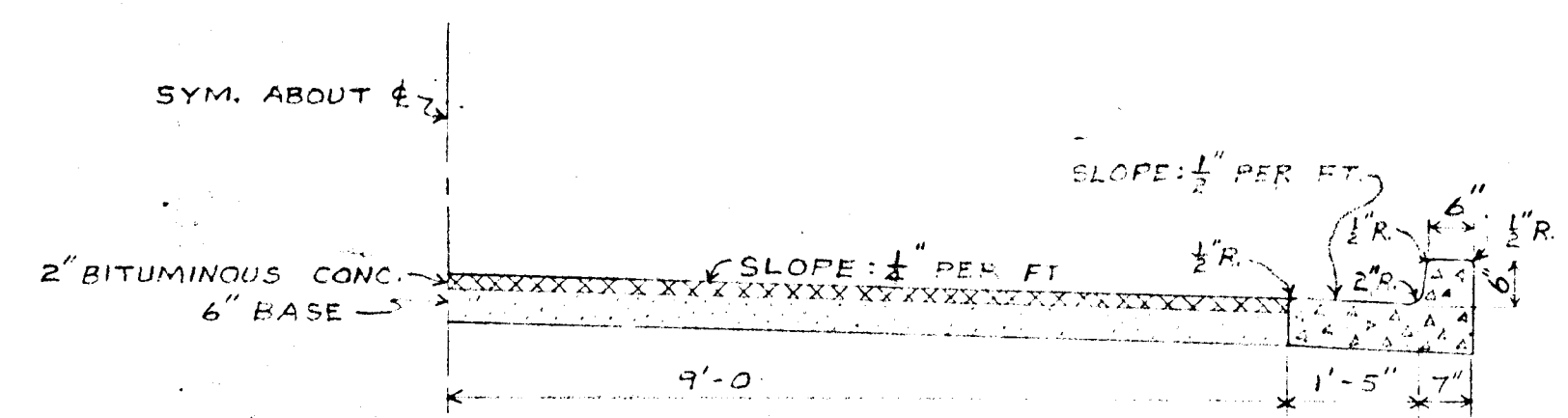
DESIGNED BY AJCAI	SCALE 1" = 100'	DATE
DRAWN BY REC	GREENHORNE AND O'MARA CIVIL ENGINEERS LAND SURVEYORS 4634 BALTIMORE AVENUE, HYATTSVILLE, MD.	
APPROVED BY CRJ	OWNER HOWARD COUNTY DEV. CORP. 2 ALLVIEW DR. ELICOTT CITY	JOB NO. 5-415 FILE NO. SD-422



Revised 7-7-58

XXAL-63-002



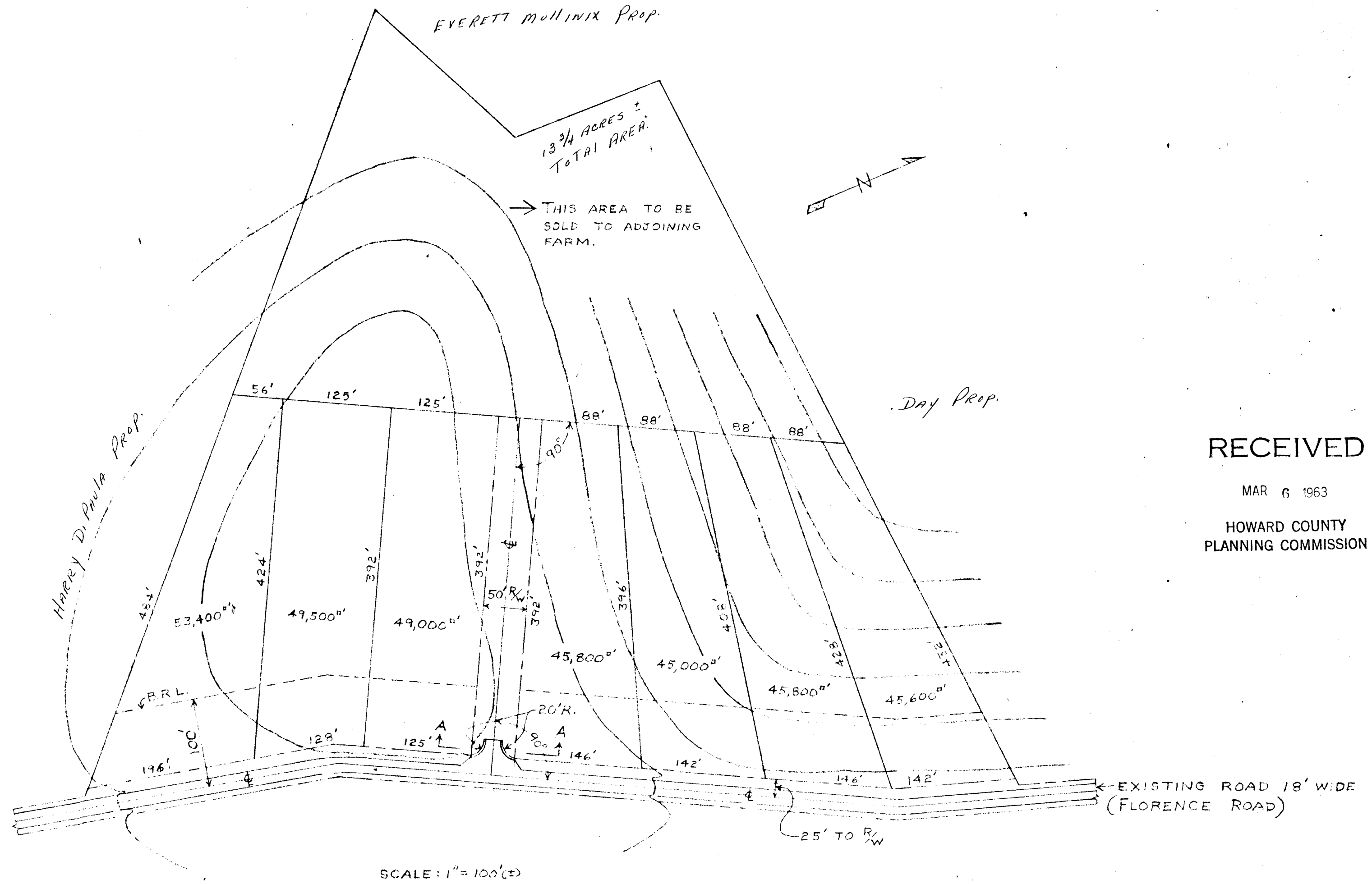


SCALE: 1/2" = 1'

SECTION A-A

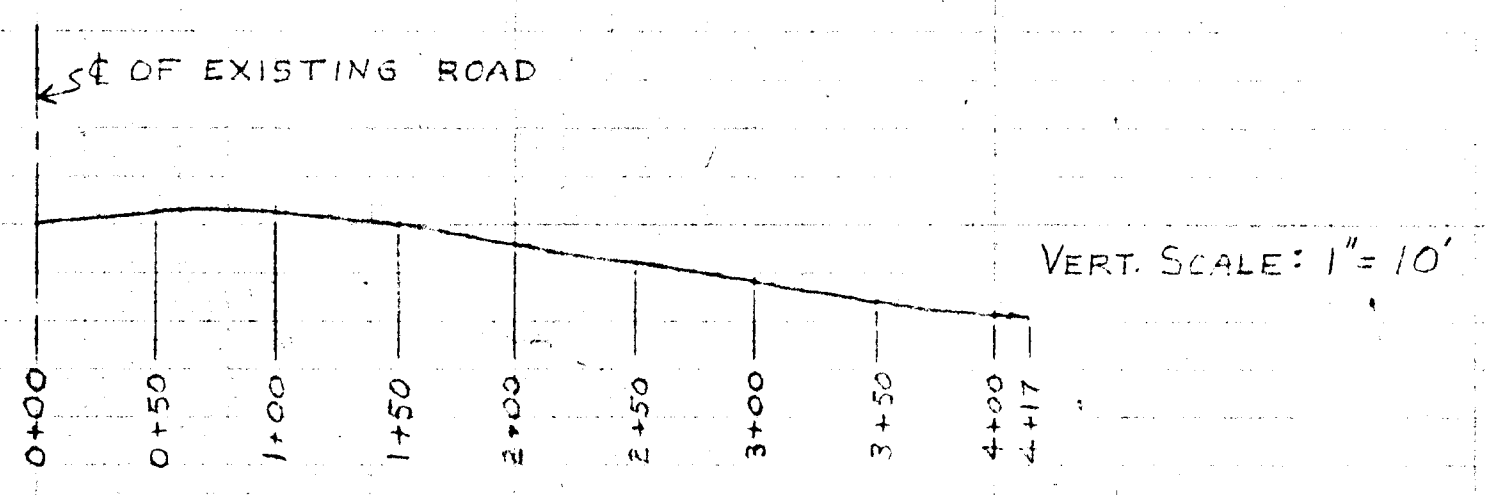
NOTES

1. PAVEMENT AND CURB & GUTTER WILL MEET MARYLAND STATE HIGHWAY SPECIFICATIONS.
2. DIMENSIONS AND AREAS GIVEN FOR LOTS ARE APPROXIMATE.
3. EACH LOT CONTAINS AT LEAST THE MINIMUM REQUIREMENT OF 1 ACRE.
4. CONTOUR INTERVAL IS 5 FEET.
5. BUILDING RESTRICTION LINE IS 100' FROM E OF ROAD.



SCALE: 1" = 100' (±)

RECEIVED  
MAR 6 1963  
HOWARD COUNTY  
PLANNING COMMISSION



PROFILE OF EXISTING GROUND  
ALONG E OF PROPOSED ROAD

PRELIMINARY  
Subdivision - ON PLATE HEIGHT -  
**PLAN OF LAND**  
BELONGING TO  
**ALBERT K & EDNA M. ROSS**  
HOWARD COUNTY, MD.  
SCALE: 1" = 100' (±) FEB. 16, 1963  
(UNLESS NOTED)  
4th ELECTION DIST.

ENGINEER - EARNEST HESTER  
FOET DETRIE  
FREDERICK, MD.  
DATE 6 MARCH 1963

XXAL-63-002

# 223

R.P. - 1215