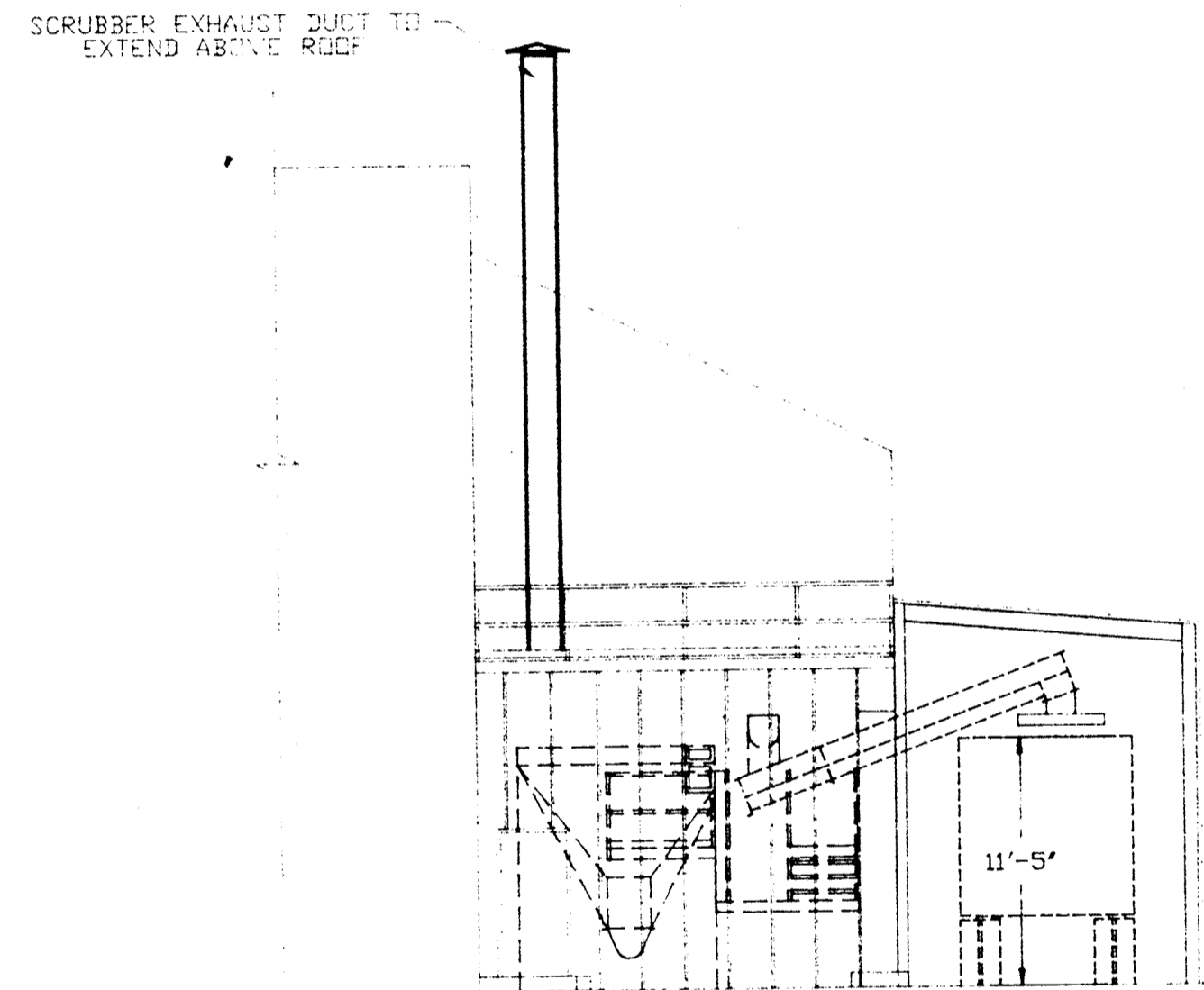
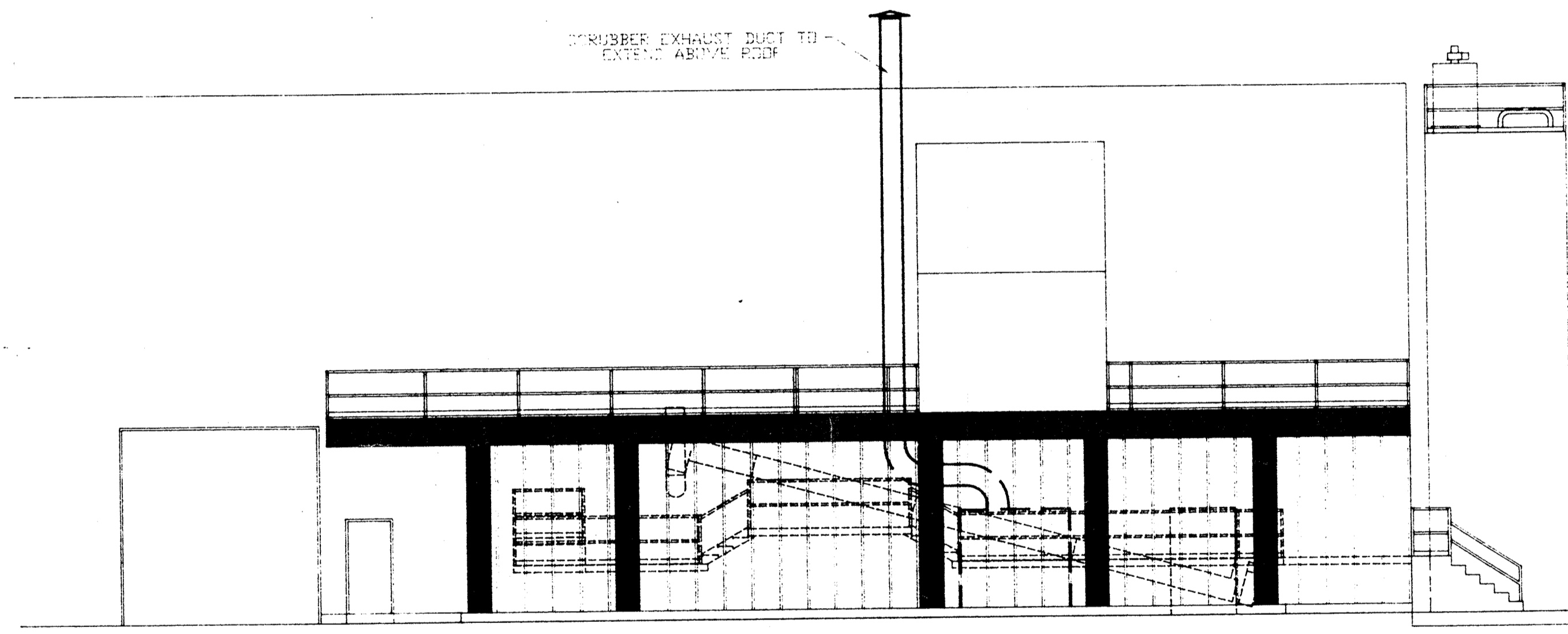


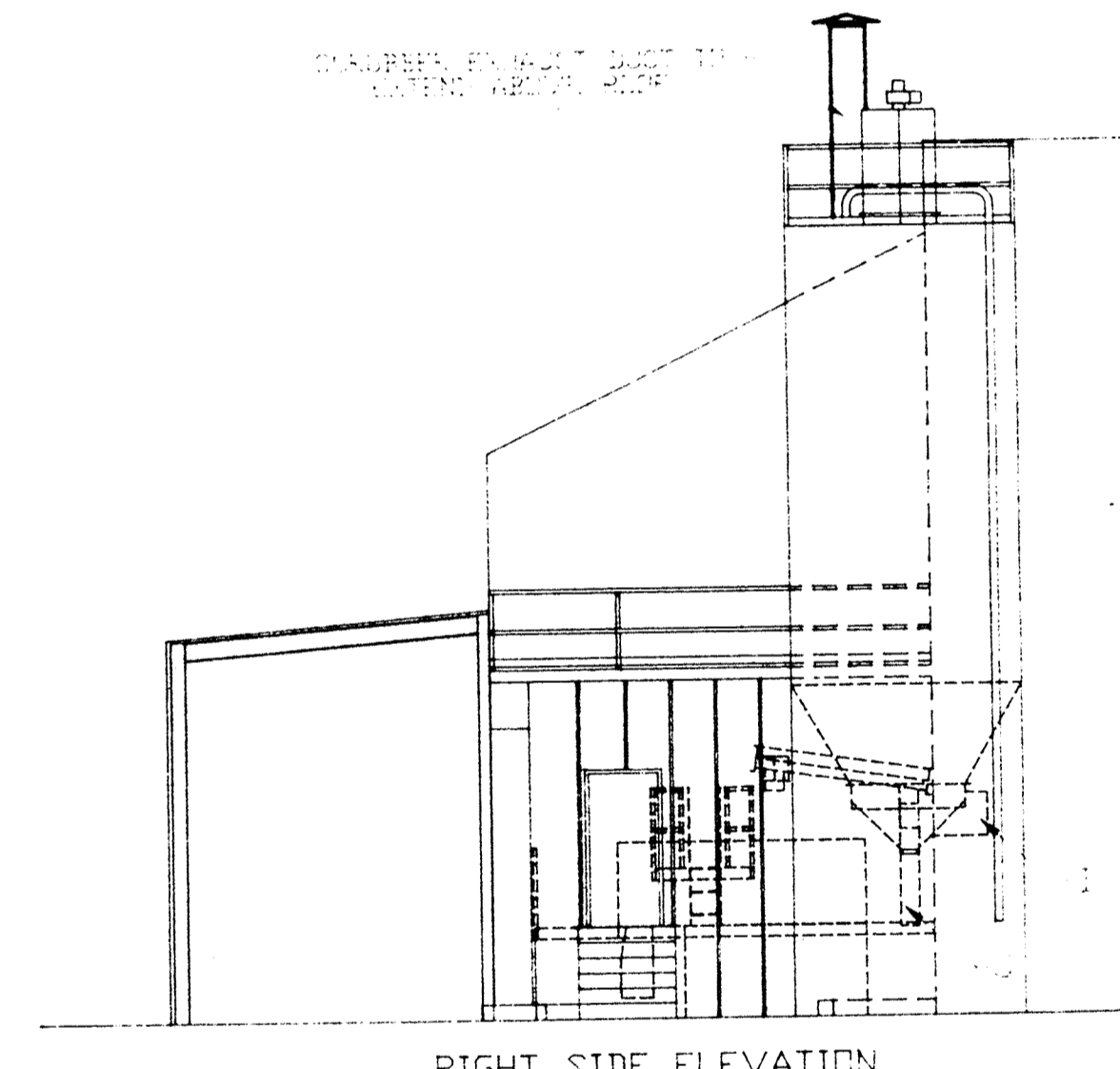
EQUIPMENT LIST		
A	RECEIVING CONVEYOR - 14' DIA. X 36' LONG	10 HP.
B	RECEIVING HOPPER 10 TON CAPACITY (APPROX)	20 HP.
C	RECEIVING HOPPER DISCHARGE CONVEYOR - 14' DIA. X 24' LONG	20 HP.
D	BLENDER FEED CONVEYOR - 14' DIA. X 22' LONG	10 HP.
E	LEIPOLD BLENDER MODEL B-3100 - (BY OTHERS)	25 HP.
F	BLENDER DISCHARGE CONVEYOR - 16' DIA. X 42' LONG	15 HP.
G	LOAD-OUT SCREW CONVEYOR - 16' DIA. X 16' LONG	10 HP.
H	SCREW 10 FT. DIA. 30 TON CAPACITY	
I	5' DIA. BIN ACTIVATOR	3 HP.
J	10' ROTOLICA	1.5 HP.
K	LOWE SILEN DISCHARGE CONVEYOR - 9' DIA. X 22' LONG	5 HP.
L	BLENDER TIME FEED CONVEYOR - 9' DIA. X 8' LONG	5 HP.
M	OFFICE TRAILER 8' X 16'	60 AMP.
N	SCRUBBER BY OTHERS	5 HP.
O	AIR COMPRESSOR	5 HP.
P	SILEN FILTER AND FAN	2 HP.



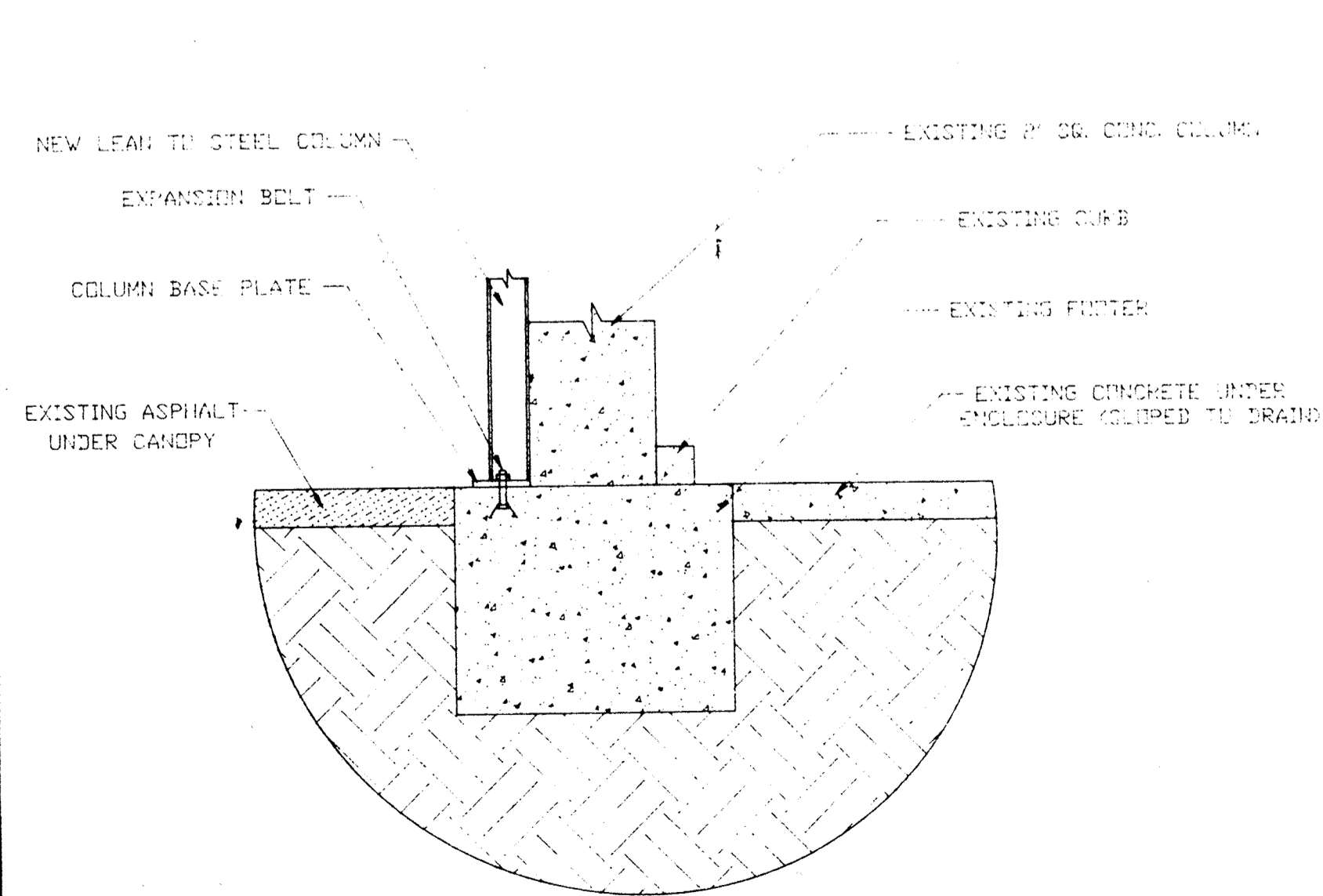
LEFT SIDE ELEVATION



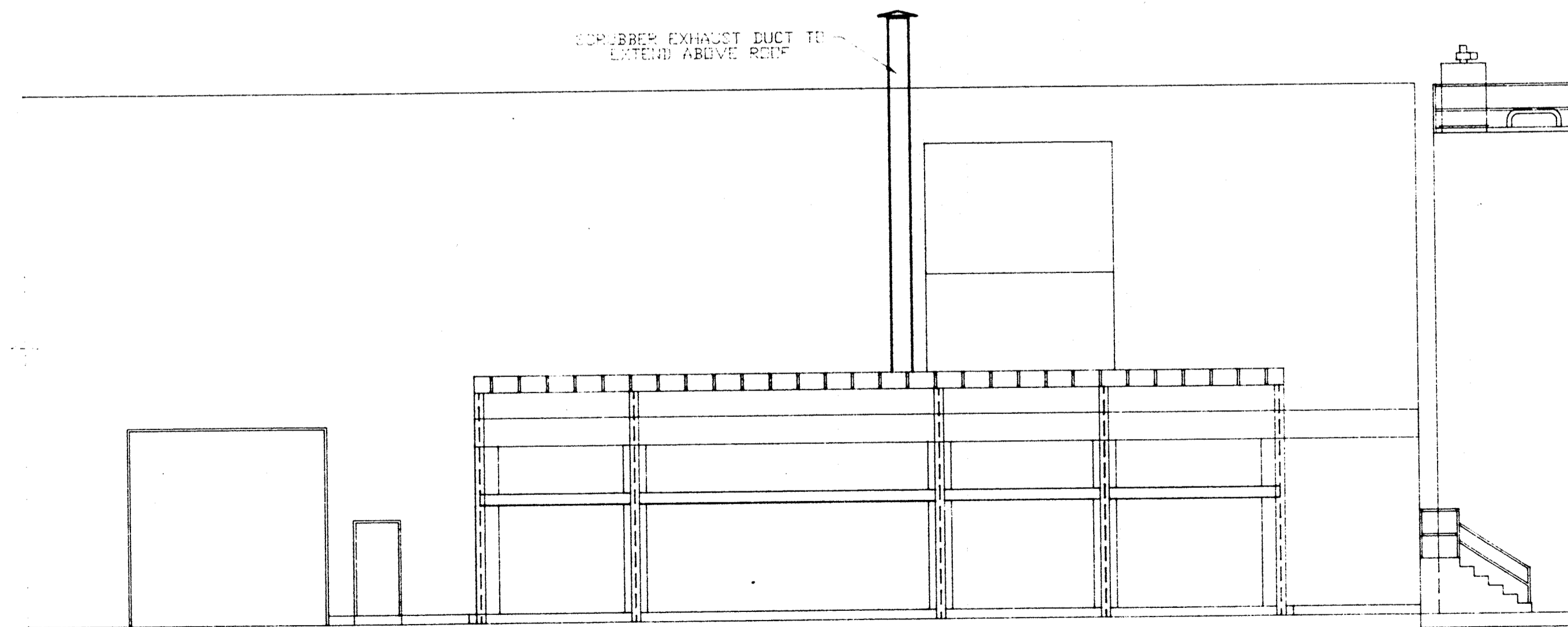
VIEW A-A ELEVATION OF EXISTING BUILDING MODIFICATIONS



RIGHT SIDE ELEVATION



SECTION B-B (CANOPY COLUMN @ CURB)



ELEVATION OF PROPOSED BUILDING

THE CONTENTS AND THE INFORMATION IT CONTAINS ARE THE PROPERTY OF BIO-GRO SYSTEM, INC. AND BE LOANED TO YOU FOR LIMITED USE ONLY AND MUST BE RETURNED TO BIO-GRO SYSTEM, INC. UPON COMPLETION OF THE PROJECT. REPRODUCTION OR DISTRIBUTION OF THIS DOCUMENT WITHOUT THE WRITTEN AUTHORIZATION FROM BIO-GRO SYSTEM, INC. IS PROHIBITED. CONTACT: BIO-GRO SYSTEM, INC. AT THE ADDRESS OR PHONE NUMBER LISTED.

Messick & Gray

R.D. 2, Box 150K Bridgetown, DE 19933
302-337-8777 Fax: 302-337-8121

Process Equipment
Material Handling
Systems
Industrial and
Agricultural Design
Services
Sheet Metal
Fabrication
Structural Fabrication
Steel Buildings

FOR: **BIO-GRO ANnapolis**

SCALE: 1/8" = 1'-0"

DATE: 7-9-93

DRAWN BY: W. K. D.
DWG #: HOWARD2

REV.	DATE	REVISION	REV. BY	CHK. BY

PLAN VIEW & ELEVATIONS OF PROPOSED SYSTEM & BUILDING