

HO-897

Milton and Nellie Murphy House

10546 Frederick Road

Ellicott City vicinity

Howard County, Maryland

Private

c. 1923-24

Description:

The Milton and Nellie Murphy House is located on the north side of the road, just west of the intersection with Route 40. The house faces south toward the road, and is a 2-1/2 story, three-bay by three-bay frame foursquare with aluminum siding, on a raised, parged foundation, and with a cross-gable roof that appears to be asbestos shingles in imitation of slate. There is an exterior brick chimney on the west elevation. The first story has a porch across all three bays, and it wraps around on the east, where it is enclosed as a one-story sun porch. The porch has a hipped roof and four wood Doric columns. The gable end has a round-arched six-over-one sash in the center, with a six-over-one sash to each side in a Serliana motif. The first story has a four-room plan, basically consisting of a hall-parlor plan with two rooms behind it, with an addition on the rear. The southeast room is the entrance vestibule and is now divided by a wall to separate the stairway from the rest of the room. The second story has a passage that runs east-west with two rooms and a closet to the south and a bathroom to the west. The passage turns to the north, leading to the northwest chamber. About 40 feet northeast of the house is a garage that is one story, and three bays by two bays. It is frame, with wood shingles, and has a gable roof with asbestos shingles and a north-south ridge. There is a shed roof addition on the north elevation that is two bays by two bays, has wood-shingle siding, and has inverted-V-seam metal roofing. The south elevation has three pairs of wood doors. There is a wagon shed about 30 feet north of the garage. It is a one-story, two-bay by one-bay frame structure with German siding, a concrete foundation, and a gable roof with a north-south ridge and asbestos shingles. The chicken houses are located about 35 feet northwest of the house. The east building is a one-story, two-bay by one-bay frame structure with V-groove vertical boards and a shed roof with inverted-V-seam metal that slopes down to the north. The west building is a one-story, two-bay by two-bay frame structure with beaded-edge-and-center vertical-board siding. It has a shed roof that slopes down to the north and is covered with inverted-V-seam metal.

Significance:

The Milton and Nellie Murphy House is located on part of what had been the site of St. Charles College. The land had been part of Doughoregan Manor and was donated to the college by Charles Carroll of Carrollton. The college was destroyed by fire in March 1911. Morris Shapiro, president of the C. A. Gambrill Mfg. Co. and a large landowner in Howard County, bought the college property in 1922 and was having it surveyed and subdivided. In June 1923 a large portion of the property was auctioned at prices of \$125-275 per acre. The subdivision had the simplest possible nature. Schapiro was merely

creating smaller lots without adding any new streets, giving everyone street frontage along Frederick Road. The character was much more rural than most suburban development of the period. The newspaper noted that the buyers included A. F. Gieske, H. T. Grimes, and M. A. Murphy. Murphy bought three lots, 30-32 and eight years later bought two more, lots 33 and 34, from Thaddeus Grimes. Murphy owned these lots until 1946, and the existing house is located on the three that he bought from Shapiro, so it would seem that he built the house c. 1923-24 as his own dwelling. The house is basically an early version of an American foursquare. The use of the cross gable and the Palladian windows in the gable ends are features generally found on the earliest foursquares in Maryland, from the late 1890s to the first decade or so of the twentieth century. It is unexpected to find them this late, when most foursquares had adopted the hip roof with dormers. The plan is typical for foursquares, divided into four rooms, one in each corner, with one serving as the entrance foyer and stairhall. The addition on the rear seems to be early. There are several farm outbuildings on the property that suggest that the Murphys were doing a little farming on their small lot, such as raising chickens, though Milton Murphy must have had another occupation. The house was scheduled to be demolished in late August 2007.

Maryland Historical Trust

Maryland Inventory of Historic Properties Form

Inventory No. HO-897

1. Name of Property (indicate preferred name)

historic Milton & Nellie Murphy House

other

2. Location

street and number 10546 Frederick Road not for publication

city, town Ellicott City vicinity

county Howard

3. Owner of Property (give names and mailing addresses of all owners)

name Ellicott Square LLC

street and number 5300 Dorsey Hall Drive, #102 telephone

city, town Ellicott City state MD zip code 21042

4. Location of Legal Description

courthouse, registry of deeds, etc. Howard County Courthouse tax map and parcel: 16, p. 63

city, town Ellicott City liber 9776 folio 554

5. Primary Location of Additional Data

- Contributing Resource in National Register District
- Contributing Resource in Local Historic District
- Determined Eligible for the National Register/Maryland Register
- Determined Ineligible for the National Register/Maryland Register
- Recorded by HABS/HAER
- Historic Structure Report or Research Report
- Other

6. Classification

Category	Ownership	Current Function	Resource Count	
			Contributing	Noncontributing
<input type="checkbox"/> district	<input type="checkbox"/> public	<input type="checkbox"/> agriculture		
<input checked="" type="checkbox"/> building(s)	<input checked="" type="checkbox"/> private	<input type="checkbox"/> commerce/trade	4	0
<input type="checkbox"/> structure	<input type="checkbox"/> both	<input type="checkbox"/> defense	0	0
<input type="checkbox"/> site		<input type="checkbox"/> domestic	1	0
<input type="checkbox"/> object		<input type="checkbox"/> education	0	0
		<input type="checkbox"/> funerary	5	0
		<input type="checkbox"/> government		
		<input type="checkbox"/> health care		
		<input type="checkbox"/> industry		
		<input type="checkbox"/> landscape		
		<input type="checkbox"/> recreation/culture		
		<input type="checkbox"/> religion		
		<input type="checkbox"/> social		
		<input type="checkbox"/> transportation		
		<input type="checkbox"/> work in progress		
		<input type="checkbox"/> unknown		
		<input checked="" type="checkbox"/> vacant/not in use		
		<input type="checkbox"/> other:		
			Number of Contributing Resources previously listed in the Inventory	
			5	

7. Description

Inventory No. HO-897

Condition

<input type="checkbox"/> excellent	<input type="checkbox"/> deteriorated
<input checked="" type="checkbox"/> good	<input type="checkbox"/> ruins
<input type="checkbox"/> fair	<input type="checkbox"/> altered

Prepare both a one paragraph summary and a comprehensive description of the resource and its various elements as it exists today.

The Milton and Nellie Murphy House is located at 10546 Frederick Road, on the north side of the road, just west of the intersection with Route 40. It is about five miles west of Ellicott City, in eastern Howard County, Maryland. The property consists of a house, a wagon shed, a garage, and two chicken houses.

House, Exterior

The house faces south toward the road, and is a 2-1/2 story, three-bay by three-bay frame foursquare with aluminum siding, on a raised, parged foundation, and with a cross-gable roof that appears to be asbestos shingles in imitation of slate. There is an exterior brick chimney on the west elevation. The south elevation has a six-over-one sash to the west and another in the center bay, and a door to the east with twelve lights over one panel. The door has sidelights with four lights over one panel. The first story has a porch across all three bays, and it wraps around on the east, where it is enclosed as a one-story sun porch. There is a door on the south side of the sun porch that has twelve lights over one panel and has a six-over-six sash to each side of the door. The porch has a hipped roof, a tongue-and-grooved wood deck, bead-board soffit, four wood Doric columns, railings with square balusters, and a boxed cornice. The second story has a six over one sash in both the west and center bays and a three-sided bay to the east that contains three six-over-one sash. There is a box cornice with returns. The gable end has a round-arched six-over one sash in the center, with a six-over -one sash to each side in a Serliana motif.

On the east elevation, the first-story south bay has the projecting sun porch with triple six-over-six double-hung sash. The center bay has two six-light casements above a cellar door that has four lights over two lying panels. The north bay has two six-over-one double-hung sash. The second story north and south bays have a single six-over-one double-hung sash, while the center bay has no opening. The gable end matches that of the south elevation. There is an enclosed porch on the north elevation, and the east elevation of this enclosed porch has a six-over-one sash.

The north elevation of the sun porch has paired six-over-six double-hung sash. The first story east bay has a new door and a one-over-one sash, with a new porch attached here. The center bay has a six-over-one double-hung sash, and the west bay has a smaller six-over-one. On the second story, the east bay has a six-over-one and a new one-over-one sash. There is no opening in the center bay, while the west bay also has a six-over-one double-hung sash. The gable end has two six-over-one sash. There is an interior brick chimney on the ridge at the north end.

The west elevation, on the first story, has a six-over-one sash on the north addition. The main block of the house is two bays, with a three-sided bay window in the north bay, containing three six-over-one sash. The south bay has a brick chimney, with a six-light casement to each side. The second story has three six-over-one double-hung sash. The gable end matches the south elevation, and has a steel fire escape attached to it and to the second story.

House, Interior

The basement has concrete floors and all new partitions. The floor joists are circular-sawn 2 x 10s.

The first story has a four-room plan, basically consisting of a hall-parlor plan with two rooms behind it, with an addition on the rear. The southeast room is the entrance vestibule and is now divided by a wall to separate the stairway from the rest of the room. This wall runs north-south to the east of the front door, creating a separate apartment in the second story. There is 2 1/4-inch tongue-and-grooved oak flooring with two strips of walnut inlay. The baseboard is plain, and the architrave is plain with a bead below the top piece and two ogees creating a cornice on the top of the top piece. The woodwork is painted over top of a varnish finish. The front door is hung on butt hinges with ball finials and has a brass mortise lock. There is a wide doorway on the west elevation and a door on the north elevation, set to the west.

The southwest room baseboard and architrave match the southeast room. There is a fireplace on the west elevation with a dark red

Maryland Historical Trust

Maryland Inventory of Historic Properties Form

Inventory No. HO-897

Name Milton & Nellie Murphy House
Continuation Sheet

Number 7 Page 1

brick mantel and the remains of later brick added to the front of it, as well as a later raised tile hearth. The firebox is constructed of firebrick. The northeast room is a kitchen with linoleum on the floor and typical baseboard and architrave. The wood cabinets appear to date to the 1950s or 1960s. There is a built-in cupboard on the west elevation of painted knotty pine. There is a narrow passage back to this space with two doors on the east wall. The south door could not be opened and is probably a closet beneath the stairway. The north door leads to a stairway down to a side door to the exterior, and also to stairs down to the cellar. These doors have two panels each, and butt hinges with ball finials.

The northwest room has typical flooring, baseboard, and architrave. The flooring is blind-nailed with wire nails over paper, over top of diagonal sub-flooring. There is a three-sided bay window centered on the west elevation. On the east is a new built-in closet. The north elevation has an original door. The northwest addition has linoleum, typical baseboard and architrave, and a typical door on the east elevation. This addition appears either to be original, or an early alteration. The northeast addition has modern trim and modern bathroom fixtures. The east end has 2 1/2-inch painted tongue-and-grooved wood flooring that indicates this was an open porch that was later enclosed.

The sun porch on the east end is now only accessible from the front porch. It has linoleum over painted 2 1/4-inch wide tongue-and-grooved wood flooring, and has typical baseboard and architrave with paint over an earlier varnished finish. There is a door on the west elevation with 15 lights, and typical hinges and lock for this house. It leads to a vestibule that was originally part of the entrance foyer in the southeast corner of the house. The east end of the vestibule has linoleum, and there is a closet on the south that has typical architrave but has a new door. The oak stairway ascends to the north on the east end, with a landing to the north, and then turns to the west. There is a square paneled newel post, rectangular balusters, and a moulded handrail, all with a natural finish. On the landing a door has been cut through on the north wall to give access to the service stair. The service stair is constructed of pine, but the landing stairway is oak, with a door on the north elevation of the service stair that has typical trim but is very low. It appears that the landing was added, converting what was originally a winder stairway.

The second story has a passage that runs east-west with two rooms and a closet to the south and a bathroom to the west. The passage turns to the north, leading to the northwest chamber. The southeast chamber has 2 1/4-inch tongue-and-grooved pine flooring that runs north-south, and is blind-nailed with cut nails. The joists are circular-sawn, are 2 inches by 9 inches, and are spaced 16 inches on centers, with bridging of tongue-and-grooved sub-floor fastened with wire nails. It has typical baseboard and architrave, an original light fixture, and a closet on the west elevation.

The southwest chamber has linoleum, typical baseboard and architrave, 1950s-era kitchen cabinets, and a closet on the east elevation, set to the south. This room was converted to a kitchen, possibly in the 1950s. The west-center chamber is a bathroom with linoleum, white tile on the walls, a white pedestal sink, a new water closet, and an original white bathtub. The room has typical architrave and an original closet to the east of the tub, in the northeast corner.

The northwest chamber has typical second-story flooring, baseboard, and architrave, of all natural pine. There is a closet on the east elevation, set to the north, and it has a doorway cut through the east side of the closet leading to the northeast chamber. The northeast chamber has typical flooring, baseboard and architrave. There is a doorway on the south elevation, set to the west, which has been closed off. There is a closet on the south elevation, set to the east. The service stairway leads to a landing with two doorways on the north elevation. The east door has been closed off, but led to the northeast chamber. The west door leads to the attic stairway.

The attic has a passage that runs from the north to the south, with carpeting and typical baseboard and architrave. The passage walls have plaster on circular-sawn lath. The stairway has a railing with square balusters, plain square newel posts, and a moulded handrail. There is a small door on the west elevation, set to the north, which leads to space beneath the eaves for storage. There are rooms to the south, west, east, and northeast, around a central hallway, and this appears to be an original or very early

Maryland Historical Trust

Maryland Inventory of Historic Properties Form

Inventory No. HO-897

Name Milton & Nellie Murphy House
Continuation Sheet

Number 7 Page 2

configuration. The east chamber has typical baseboard and architrave that has paint over a varnished finish. The northeast chamber has been converted to a kitchen, with a linoleum floor and typical baseboard and architrave. The south chamber also has typical baseboard and architrave, has an original light fixture, and has a closet on the east, set to the south. The west added chamber has linoleum and typical baseboard and architrave, and has been converted to a bathroom. It has a closet on the south elevation, set to the west. The rafters are dimensional 2 by 6s.

Garage

About 40 feet northeast of the house is a garage that is one story, and three bays by two bays. It is frame, with wood shingles, has a gable roof with asbestos shingles and a north-south ridge. There is a shed roof addition on the north elevation that is two bays by two bays, has wood shingle siding, and has inverted-V-seam metal roofing. The south elevation has three pairs of wood doors with eight lights above a crossbuck on each leaf of the doors. Beneath the crossbuck are V-groove vertical boards. The doors are hung on T hinges. There is a six-light fixed sash in the gable end, and all of the openings have head-cut trim. The building has a box cornice with returns. The east elevation has a six-over-one sash to the south, and nothing in the north bay. The addition has a large opening with a twelve-light sash stuck in it. On the north elevation, the east bay has a one-over-one sash and the rest of the elevation is covered by the addition. The gable end has a beaded-edge-end-center vertical-board door. The addition has a wide doorway with vertical-board doors that are off their hinges now. On the west elevation, the addition has beaded-edge-and-center vertical-board doors in the north and south bays. The north door is hung on machine-made strap hinges, while the south door is hung on T hinges. The north bay of the main block has a six-over-one double-hung sash, while the south bay has a door that is covered by horizontal bead board. The garage is of 2 by 4 construction with 2 by 6 rafters and joists.

Wagon Shed

There is a wagon shed about 30 feet north of the garage. It is a one-story, two-bay by one-bay frame structure with German siding, a concrete foundation, and a gable roof with a north-south roof, asbestos shingles and open eaves. The south elevation has a wagon doorway to the west that is closed off with plywood. There is a beaded-edge-and-center vertical-board door to the west that is hung on T hinges. The east and west elevations have no openings. The north elevation has a beaded-edge-and-center vertical-board door hung on rollers, set to the west, with nothing to the east. This building is of 2 by 4 construction.

Chicken Houses

The chicken houses are located about 35 feet northwest of the house. The east building is a one-story, two-bay by one-bay frame structure with V-groove vertical boards and a shed roof with inverted-V-seam metal that slopes down to the north. On the south elevation, the west bay has an eight-light casement above an altered eight-light casement. The east bay has a doorway that is missing its door. The east elevation has a doorway that is missing its door. The east elevation has a window opening. There are no openings on the north or west elevations. The structure is of 2 by 4 construction with a dirt floor.

The west building is a one-story, two-bay by two-bay frame structure with beaded-edge-and-center vertical-board siding. It has a shed roof that slopes down to the north and is covered with inverted-V-seam metal. The south elevation has a pair of large one-light sash in the west bay, with a small wood hatch above them. The east bay has one large one-light sash with a small wood hatch above it. The east elevation has a four-panel door in the south bay and a one-light sash to the north. The north elevation has a pair of new doors in the center. The west elevation has a new large opening. This building is of 2 by 4 construction and has a wood floor.

To the south of the chicken houses are a concrete trough and a grape arbor.

8. Significance

Inventory No. HO-897

Period	Areas of Significance	Check and justify below		
<input type="checkbox"/> 1600-1699	<input type="checkbox"/> agriculture	<input type="checkbox"/> economics	<input type="checkbox"/> health/medicine	<input type="checkbox"/> performing arts
<input type="checkbox"/> 1700-1799	<input type="checkbox"/> archeology	<input type="checkbox"/> education	<input type="checkbox"/> industry	<input type="checkbox"/> philosophy
<input type="checkbox"/> 1800-1899	<input checked="" type="checkbox"/> architecture	<input type="checkbox"/> engineering	<input type="checkbox"/> invention	<input type="checkbox"/> politics/government
<input checked="" type="checkbox"/> 1900-1999	<input type="checkbox"/> art	<input type="checkbox"/> entertainment/ recreation	<input type="checkbox"/> landscape architecture	<input type="checkbox"/> religion
<input type="checkbox"/> 2000-	<input type="checkbox"/> commerce	<input type="checkbox"/> ethnic heritage	<input type="checkbox"/> law	<input type="checkbox"/> science
	<input type="checkbox"/> communications	<input type="checkbox"/> exploration/ settlement	<input type="checkbox"/> literature	<input type="checkbox"/> social history
	<input type="checkbox"/> community planning		<input type="checkbox"/> maritime industry	<input type="checkbox"/> transportation
	<input type="checkbox"/> conservation		<input type="checkbox"/> military	<input type="checkbox"/> other:

Specific dates	N/A	Architect/Builder	N/A
Construction dates	c. 1923-24		

Evaluation for:

National Register Maryland Register not evaluated

Prepare a one-paragraph summary statement of significance addressing applicable criteria, followed by a narrative discussion of the history of the resource and its context. (For compliance reports, complete evaluation on a DOE Form - see manual.)

The Milton and Nellie Murphy House is located on part of what had been the site of St. Charles College. The land had been part of Doughoregan Manor and was donated to the college by Charles Carroll of Carrollton. The college was chartered in 1831, opened in 1848, and was destroyed by fire in March 1911. Other buildings on the site survived, but the college chose to rebuild in Catonsville and the land was used for a time as Brendel's Park. In May, 1923 the Ellicott City Times noted the sale of a farm by Col. Philip Carroll for development, and added that "plans are being made now for the sale of the old St. Charles site in the same manner." The editor then opined: "The disposition of these two tracts of land in small pieces probably means more to Howard county than any transaction in the last half century. This section of the county [sic], while it is as well located as any property in the state, has not been developed because of the fact that the land was held by the Carrolls and St. Charles [sic] College. No improvements of note have been made between Pine Orchard and Mayfield. It has been one of the most sparsely settled sections of the county and with the sale of small tracts promoters are of the hope that within the next few years notable improvements will be made in the line of home building." (1)

The newspaper was responding to the fact that Morris Shapiro, president of the C. A. Gambrell Mfg. Co. and a large landowner in Howard County, had bought the college property in 1922 and was having it surveyed and subdivided. In June 1923 a large portion of the property was auctioned at prices of \$125-275 per acre. The 250 acre site that held the ruins of the old college was reserved. Most of the lots faced onto Frederick Road. Those to the east of the property were small lots of about two acres, with deeper, narrow lots of roughly four acres in the center portion of the property. At the west end were some larger lots of 11 to 20 acres, one of 35 and one of 50. One piece of property was sold as a 110-acre farm, and some of the others were improved with dwellings, barns, and outbuildings. The editor again opined that there would be rapid development in this area in the near future and added: "The value of the breaking up of these farms is of inestimable value to Howard county, presenting opportunity to a large number of people to become landowners who hitherto had not been able to acquire desirable property in acreage to suit them." Forty years later similar arguments would be used for the development of Columbia. The subdivision had the simplest possible nature. Schapiro was merely creating smaller lots without adding any new streets, giving everyone street frontage along Frederick Road. The character was much more rural than most suburban development of the period, and unlike those neighborhoods on smaller lots, Schapiro did not try to control the appearance of the development. He did, however, place one covenant on the land that was common to most suburbs at the time, excluding its ownership "by a Negro, or person of Negro extraction." (2)

The newspaper noted that the buyers included A. F. Gieske, H. T. Grimes, and M. A. Murphy. Murphy bought three lots, 30-32 and eight years later bought two more, lots 33 and 34, from Thaddeus Grimes. Murphy owned these lots until 1946, and the existing house is located on the three that he bought from Shapiro, so it would seem that he built the house c. 1923-24 as his own dwelling. The house is basically an early version of an American foursquare. The use of the cross gable and the Palladian

Maryland Historical Trust

Maryland Inventory of Historic Properties Form

Inventory No HO-897

Name Milton & Nellie Murphy House

Continuation Sheet

Number 8 Page 1

windows in the gable ends are features generally found on the earliest foursquares in Maryland, from the late 1890s to the first decade or so of the twentieth century. It is unexpected to find them this late, when most foursquares had adopted the hip roof with dormers. The plan is typical for foursquares, divided into four rooms, one in each corner, with one serving as the entrance foyer and stairhall. The addition on the rear seems to be early. There are several farm outbuildings on the property that suggest that the Murphys were doing a little farming on their small lot, such as raising chickens, though Milton Murphy must have had another occupation.

The house was divided into apartments at an unknown date. The second story kitchen uses cabinets that probably date from the 1950s and could indicate that the change was made this early, but may also be reused. The house was scheduled to be demolished in late August 2007 since this lot is now considered large by Howard County standards and will be subdivided for more houses.

Notes:

(1). Joetta Cramm, *Howard County: A Pictorial History* rev. ed. (Virginia Beach, VA: The Donning Company, 2004), p. 72. *Ellicott City (Maryland) Times*, 3 May 1923, p. 1, col. 6.

(2). Howard County Land Records, plat HBN 117-600. *Ellicott City (Maryland) Times*, 14 June 1923, p. 1, col. 5-6. Howard County Land Records, HBN 118-242.

9. Major Bibliographical References

Inventory No. HO-897

See continuation sheet.

10. Geographical Data

Acreage of surveyed property 8.33 acres
Acreage of historical setting 8.33 acres
Quadrangle name Sykesville Quadrangle scale 1:24000

Verbal boundary description and justification

The boundaries consist of all of the property on map 16, p. 63, which encompasses all of the historic structures.

11. Form Prepared By

name/title	Ken Short		
organization	Howard County Dept. of Planning & Zoning	date	2/19/2008
street and number	3430 Courthouse Drive	telephone	410-313-4335
city or town	Ellicott City	state	MD zip code 21043

The Maryland Inventory of Historic Properties was officially created by an Act of the Maryland Legislature to be found in the Annotated Code of Maryland, Article 41, Section 181 KA, 1974 supplement.

The survey and inventory are being prepared for information and record purposes only and do not constitute any infringement of individual property rights.

return to: Maryland Historical Trust
DHCD/DHCP
100 Community Place
Crownsville MD 21032
410-514-7600

Maryland Historical Trust
Maryland Inventory of
Historic Properties Form

Inventory No. HO-897

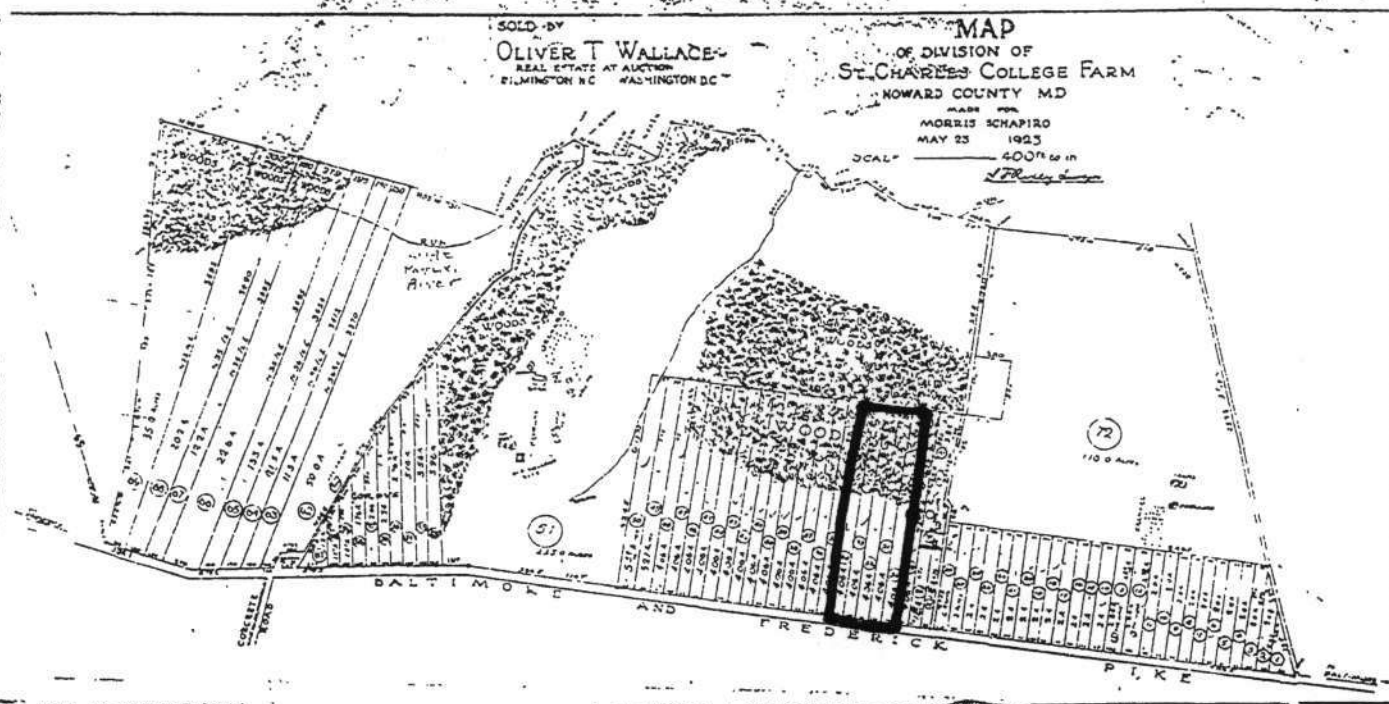
Name Milton & Nellie Murphy House

Continuation Sheet

Number 9 Page 1

See footnotes

Here is the Surveyor's Plat of the St. Charles College Farms divided into tracts and designated by numbers.



HO-897
 Milton and Nellie Murphy House
 10546 Frederick Road
 Plat HBN 117-600, St. Charles College

Milton & Nellie Murphy House (HO-897)
 10546 Frederick Road, Ellicott City
 CHAIN OF TITLE

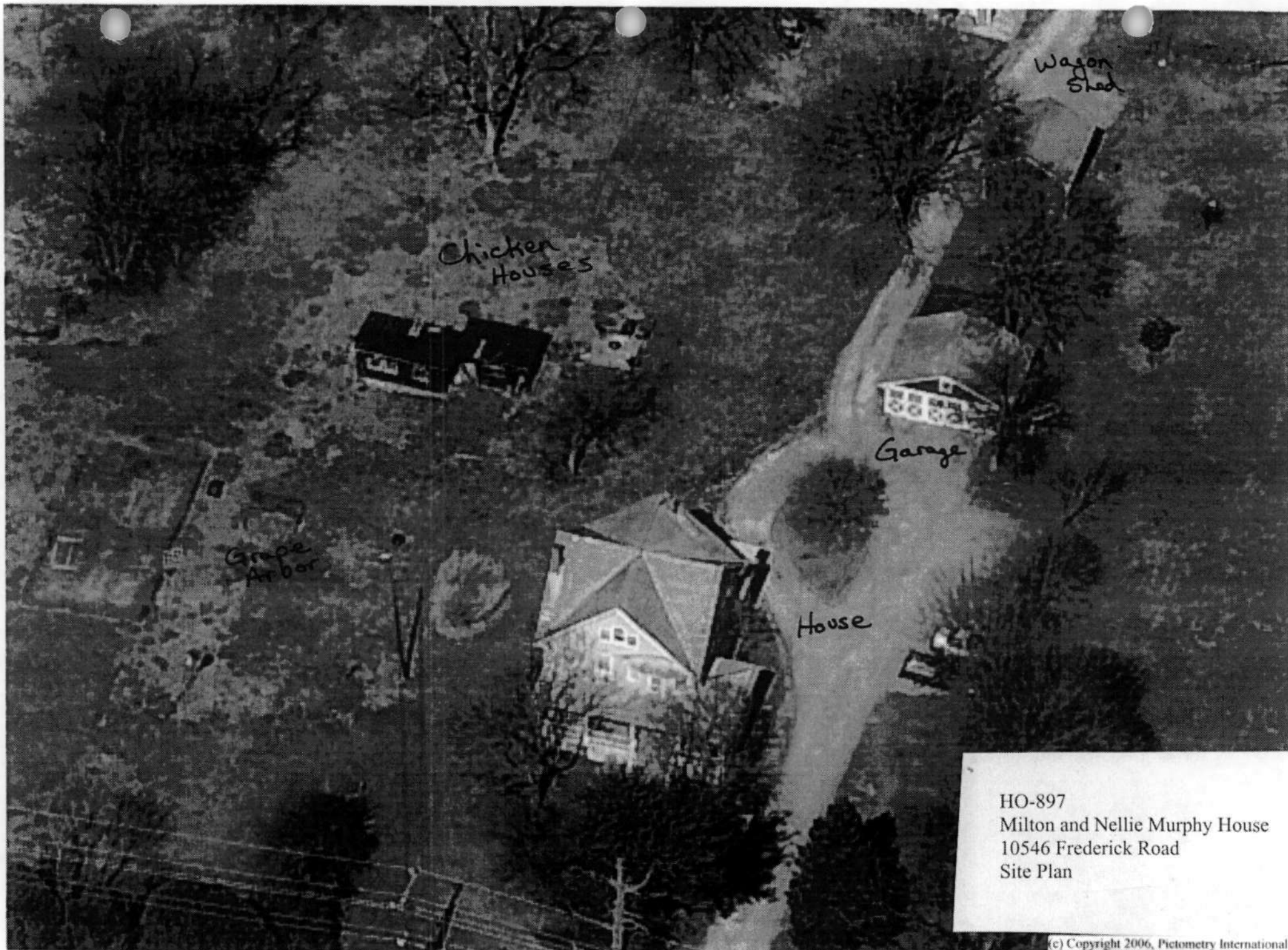
GRANTOR/HOME	GRANTEE/HOME	DATE	LIBER/ FOLIO	INSTRU- MENT	CONSIDER- -ATION	ACREAGE	NOTES
Charles J. & Ellen H. Nemphos	Ellicott Square LLC	1.6.2006	9776-554	Deed – fee simple	\$6,395,746.50	5.905 A	Part of Lots 30, 31, 32, 33 and 34
Charles H. Marcus & wf. Barbara F.	Charles and Ellen Nemphos, <i>et al</i>	1.5.1989	CMP 1990-750	Deed – fee simple	\$365,000	5.905 A	Part of Lots 30, 31, 32, 33 and 34
Harold L. Pruitt & Eleanor	Charles H. Marcus & Barbara F. Marcus (2/3 interest) & Bruce L. Marcus (1/3 interest)	8.12.1981	CMP 1067-687	Deed	\$150,000	5.905 A	Part of Lots 30, 31, 32, 33 and 34
H. Lee Ramsburg & Alva S. Ramsburg	Harold L. Pruitt & Eleanor Pruitt	5.27.1968	488-139	Deed	\$5.00	5.905 A	Part of Lots 30, 31, 32, 33 and 34
Ferol R. James, widow	Alva S. Ramsburg, Jr. & H. Lee Ramsburg	4.15.1964	416-641	Deed	\$5.00	5.905 A	Part of Lots 30, 31, 32, 33 and 34
Milton A. Murphy & Nellie B. Murphy (H/W)	Herschel M. James & Ferol R. James (H/W)	4.30.1946	BM, Jr. 189-469	Deed – fee simple	\$5.00	1) 12.18 A 2) 8.12 A	1) Part of Lots 30, 31, 32) 2) (33 and 34)
Thaddeus C. Grimes & Caroline Grimes (H/W)/Howard	Milton A. Murphy & Nellie B. Murphy (H/W)/Howard	3.2.1931	HSK 140-514	Deed – fee simple	\$5.00	8.12 A	Parts of Lots 33 and 34 2)
Morris Schapiro & Rebecca Schapiro (H/W)	Milton A. Murphy & Nellie B. Murphy (H/W)?	6.26.1923	HBN 118-242	Deed – fee simple	\$5.00	12.18 A	Lots 30, 31 and 32 in the subdivision of the Saint Charles College Farm. Covenants included: “that at no time shall the land hereby grant, or nay part thereof, be conveyed to, or owned by, a negro, or person of negro extraction, and that this covenant shall run with the lane, and bind the parties hereto, their heirs and assigns, forever. 1)
Morris Schapiro & Rebecca	Thaddeus C. Grimes/?	6.26.1923	HBN 118-292	Deed – fee simple	\$5.00	8.12 A	Lots 33 and 34 in the subdivision of the Saint

Milton & Nellie Murphy House (HO-897)
 10546 Frederick Road, Ellicott City
 CHAIN OF TITLE

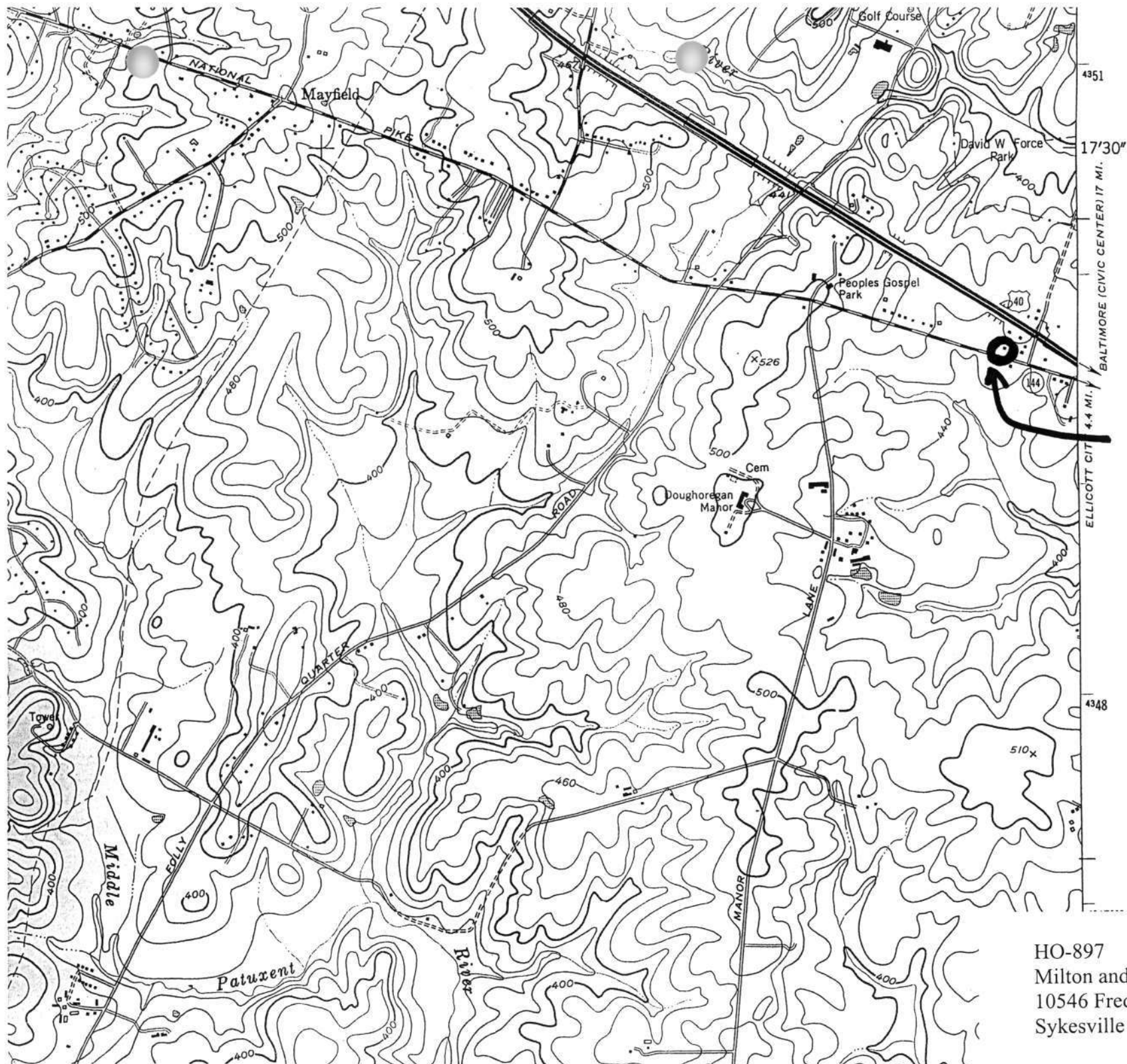
GRANTOR/HOME	GRANTEE/HOME	DATE	LIBER/ FOLIO	INSTRU- MENT	CONSIDER -ATION	ACREAGE	NOTES
Schapiro (H/W)							Charles College Farm. Covenants included: "that at no time shall the land hereby grant, or nay part thereof, be conveyed to, or owned by, a negro, or person of negro extraction, and that this covenant shall run with the lane, and bind the parties hereto, their heirs and assigns, forever. 2)
Trustees of St. Charles College	Morris Shapiro	8.22.1922	118-77	Deed - fee simple	\$5.00	8.22.1922	The property hereby conveyed comprising ten tracts of land conveyed to the said party of the first part by the following deeds: deed from Harry M. Benzinger and Edward M. Hammond, Trustees, dated April 27, 1914 and recorded as aforesaid in Liber 97, Folio 207; deed from Anita Cole and husband dated May 5, 1903 and recorded as aforesaid in Liber 78, Folio 197; deed from Royal G. Harper Carroll dated May 7, 1903 and recorded in Liber 78, Folio 195; Mary A. de la Bassetiere and husband dated January 30, 1897 and recorded in Liber 65, Folio 584; deed from John J. Vernay and wife dated

Milton & Nellie Murphy House (HO-897)
10546 Frederick Road, Ellicott City
CHAIN OF TITLE

GRANTOR/HOME	GRANTEE/HOME	DATE	LIBER/ FOLIO	INSTRU- MENT	CONSIDER -ATION	ACREAGE	NOTES
							October 15, 1884 and recorded in Liber 48, Folio 387; deed from Charles Gerwig and wife <i>et al</i> dated April 10, 1883 and recorded in Liber 46, Folio 176; deed from Michael C. Jenkins dated August 10, 1869 and recorded in Liber 29, Folio 420; deed from Charles Carroll <i>et al</i> dated December 10, 1960 and recorded in Liber 21, Folio 216; deed from John S. Tyson <i>et al</i> dated October 10, 1868 and recorded in Liber 46, Folio 155.



HO-897
Milton and Nellie Murphy House
10546 Frederick Road
Site Plan



HO-897
Milton and Nellie Murphy House
10546 Frederick Road
Sykesville quad

HO-897
Milton and Nellie Murphy House
10546 Frederick Road
Howard County, Maryland
Ken Short, photographer

Photo Log

Nikon D-70 camera
HP Premium Plus paper
HP Gray Photo print cartridge

HO-0897_20070824_01
House, south and east elevations

HO-0897_20070824_02
House, west and south elevations

HO-0897_20070824_03
House, north elevation

HO-0897_20070824_04
House, southwest room, west elevation

HO-0897_20070824_05
House, stairway

HO-0897_20070824_06
House, second story west chamber bathroom

HO-0897_20070824_07
Garage, west and south elevations

HO-0897_20070824_08
Wagon shed, west and south elevations

HO-0897_20070824_09
Chicken houses, south elevations



HO-897

Milton and Nellie Murphy House

10546 Frederick Rd

Howard County, MD

Ken Short

Aug 2007

MD SHPO

House, South and East Elevations

1/9



HO-897

Milton and Nellie Murphy House

10546 Frederick Rd

Howard County, MD

Ken Short

Aug 2007

MD SHPO

House, West and South Elevations

2/9



HO-897

Milton and Nellie Murphy House

10546 Frederick Rd

Howard County, MD

Ken Short

Aug 2007

MD SHPO

House, North Elevation



3/9



HO-897

Milton and Nellie Murphy House

10546 Frederick Rd.

Howard County, MD

Ken Short

Aug. 2007

MD SHPO

House, Southwest room, West Elevation

4/9



HO-897

Milton and Nellie Murphy House

10546 Frederick Road

Howard County MD

Ken Short

Aug 2007

MD SHPO

House, Stairway

5/9

HP Premium Plus



HO-897

Milton and Nellie Murphy House

10546 Frederick Rd

Howard County, MD

Ken Short

Aug 2007

MD SHPO

House, second story west chamber bathroom

6/9



HO- 897
Milton and Nellie Murphy House
10546 Frederick Rd.
Howard County, MD
Ken Short
Aug 2007
MD SHPO
Garage, West and South Elevations

7/9



HO-897

Milton and Nellie Murphy House

10546 Frederick Rd

Howard County, MD

Ken Short

Aug 2007

MD SHPO

Wagon Shed, west and South Elevations

8/9



HO-897

Milton and Nellie Murphy House

10546 Frederick Road

Howard County, MD

Ken Short

Aug 2007

MD SHPO

Chicken houses, south elevations

9/9

Milton A. Murphy House
HO-897
10546 Frederick Road, Ellicott City
Howard County
Ca. 1925
Private

The Murphy House property includes two of five houses located on a spit of land created by the intersection of Route 40 and Frederick Road about five miles west of downtown Ellicott City, Howard County, Maryland. Route 40 forms the rear (north) property boundary and Frederick Road forms the front (south) property boundary. Kiwanis Wallas Park is located across the street and Doughoregan Manor is located just west of the site. Although the property is bounded by two busy roadways, a wooded edge shields the site. The 6-acre lot has five buildings on the property. There are three contributing buildings on the property: a wood-frame house (ca. 1920s), a wood-frame garage (ca. 1930s), and a wood frame carriage house (ca. 1920s). There are two non-contributing buildings on the property: a wood frame house and shed, both constructed in the late 20th c.

The main house on the property is a 2 ½-story, 3-bay, wood-frame house (ca. 1920) with a square footprint and a cross-gable roof. The house has a concrete foundation, wood siding (now covered with aluminum siding), wood six-over-one windows, and a metal shingle roof. The pattern-book house displays characteristics of the Queen Anne style including the cross-gable roof form, use of bay windows, Palladian windows, and the broad porch. In Howard County, this type was most common in the late 19th century through WWI and visually this house initially appears to date from the turn of the century. However, no building appears at this site on the 1922 plat of the property. Additionally, features such as the concrete porch and the sunporch on the east façade suggest that house was in fact constructed in the 1920s, and is just stylistically retardaire.

The Murphy House is associated with events that have made a contribution to the broad patterns of Howard County history. In the period between WWI and WWII, many of the houses built in Howard County were pattern-book houses constructed for young local families and for families moving to the country from Baltimore City. These houses were often built alongside primary roadways on subdivided agricultural land. Generous lots that provided space for small-scale farming were common. The house also embodies the distinctive characteristics of its type, period, and method of construction. The house is a very intact example of a large pattern-book house, with some design elements taken from the Queen Anne style. While much larger than the Gieseke House next door, the houses do share similar detailing such as windows, doors, and porch columns that suggest they could have been constructed by the same builder.

Maryland Historical Trust Maryland Inventory of Historic Properties Form

Inventory No. HO-897

1. Name of Property (indicate preferred name)

historic Milton A. Murphy House

other n/a

2. Location

street and number 10546 Frederick Road not for publication

city, town Ellicott City vicinity

county Howard

3. Owner of Property (give names and mailing addresses of all owners)

name Charles J. and Ellen H. Nemphos, etal

street and number 7160 Columbia Gateway Drive telephone n/a

city, town Columbia state MD zip code 21046

4. Location of Legal Description

courthouse, registry of deeds, etc. Howard County Land Records liber 1997 folio 50

city, town Columbia tax map 16 tax parcel 63 tax ID number 02238020

5. Primary Location of Additional Data

- Contributing Resource in National Register District
- Contributing Resource in Local Historic District
- Determined Eligible for the National Register/Maryland Register
- Determined Ineligible for the National Register/Maryland Register
- Recorded by HABS/HAER
- Historic Structure Report or Research Report at MHT
- Other: _____

6. Classification

Category	Ownership	Current Function	Resource Count	
<input type="checkbox"/> district	<input type="checkbox"/> public	<input type="checkbox"/> agriculture	Contributing	Noncontributing
<input checked="" type="checkbox"/> building(s)	<input checked="" type="checkbox"/> private	<input type="checkbox"/> commerce/trade	3	2
<input type="checkbox"/> structure	<input type="checkbox"/> both	<input type="checkbox"/> defense	0	0
<input type="checkbox"/> site		<input checked="" type="checkbox"/> domestic	0	0
<input type="checkbox"/> object		<input type="checkbox"/> education	0	0
		<input type="checkbox"/> funerary	3	2
		<input type="checkbox"/> government		Total
		<input type="checkbox"/> health care		
		<input type="checkbox"/> industry		
		<input type="checkbox"/> landscape		
		<input type="checkbox"/> recreation/culture		
		<input type="checkbox"/> religion		
		<input type="checkbox"/> social		
		<input type="checkbox"/> transportation		
		<input type="checkbox"/> work in progress		
		<input type="checkbox"/> unknown		
		<input type="checkbox"/> vacant/not in use		
		<input type="checkbox"/> other:		
			Number of Contributing Resources previously listed in the Inventory	
			0	

7. Description

Inventory No. HO-897

Condition

excellent deteriorated
 good ruins
 fair altered

Prepare both a one paragraph summary and a comprehensive description of the resource and its various elements as it exists today.

The Murphy House property includes two of five houses located on a spit of land created by the intersection of Route 40 and Frederick Road about five miles west of downtown Ellicott City, Howard County, Maryland. Route 40 forms the rear (north) property boundary and Frederick Road forms the front (south) property boundary. Kiwanis Wallas Park is located across the street and Doughoregan Manor is located just west of the site. Although the property is bounded by two busy roadways, a wooded edge shields the site. The 6-acre lot has five buildings on the property. There are three contributing buildings on the property: a wood-frame house (ca. 1920s), a wood-frame garage (ca. 1930s), and a wood frame carriage house (ca. 1920s). There are two non-contributing buildings on the property: a wood frame house and shed, both constructed in the late 20th c.

The main house on the property is a 2 ½-story, 3-bay, wood-frame house (ca. 1920) with a square footprint and a cross-gable roof. The house has a concrete foundation, wood siding (now covered with aluminum siding), wood six-over-one windows, and a metal shingle roof. The pattern-book house displays characteristics of the Queen Anne style including the cross-gable roof form, use of bay windows, Palladian windows, and the broad porch. In Howard County, this type was most common in the late 19th century through WWI and visually this house initially appears to date from the turn of the century. However, no building appears at this site on the 1922 plat of the property. Additionally, features such as the concrete porch and the sunporch on the east façade suggest that house was in fact constructed in the 1920s, and is just stylistically retardaire.

The primary façade of the house faces south. The entry is located in the eastern bay and is composed of a 12-light over one panel wood door with 4-light over one panel sidelights. Two window openings are located west of the entry. The 2nd story has an oriel window in the eastern bay vertically aligned over the entry door and two window openings that are vertically aligned with the 1st story window openings. A tripartite Palladian window is centered in the gable at the attic story. A 1-story hipped-roof porch extends across the front façade. The porch has a wood deck resting on concrete piers, wood Doric columns supporting the roof, and broad wood steps leading to the porch.

A 1-story sunroom projects from the southern section of the east façade. The sunroom is located under the porch roof, which wraps around the east façade. The south façade of the sunroom, which is flush with the front façade of the house, has a 12-light over one panel door flanked by two window openings that hold six-over-six wood windows. The east façade of the sunroom has a triple window opening, which holds three six-over-six window openings. The north façade of the sunroom has a double window opening that holds two six-over-six wood windows.

The east (side) façade of the house is three bays wide. At the 1st story, the sunroom projects from the southern bay, the center bay has two small windows that probably light the stair, and the northern bay has a pair of window openings. The 2nd story has two window openings, located in the northern and southern bays. A tripartite Palladian window is centered in the gable at the attic story. A cellar landing door opening, which holds a four-light over two panel wood door is centered on the façade at the cellar level and a pair of cellar window openings with three-light windows are vertically aligned with the northern 1st story window openings.

A 1-story hipped roof rear ell extends across the north (rear) façade. The ell has one window opening on its east façade, which is flush with the house's east façade. The north façade of the ell has an entry at its east end with a four-light over two panel door. A small shed roofed porch covers the entry. A small window opening is located next to the door. The western half of the ell has two window openings. The west façade of the ell has one window opening. The 2nd story has two symmetrically located original window openings. One added window opening is located between the two original openings. The attic story has two centered window openings.

An exterior brick fireplace chimney is located on the house's west façade, near the south end. A pair of small window openings flanks the chimney. An oriel window with three window openings and a hipped roof is located north of the chimney on the 1st story. The 2nd story has three symmetrically arranged window openings, with a smaller window opening at the center. A tripartite Palladian window is centered in the gable at the attic story. One cellar window opening with a 3-light window is located at the south end of the façade.

Maryland Historical Trust

Maryland Inventory of Historic Properties Form

Inventory No. HO-897

Name
Continuation Sheet

Number 7 Page 1

The house is currently occupied by renters. The interior was not made accessible.

An intact 1-story, wood-frame garage in fair to poor condition is located north of the house. The garage has a rectangular footprint and gable roof with deep projecting eaves. It has wood shingle siding, wood doors and wood six-over-one windows, and metal shingle roofing. The primary façade of the garage faces south. The façade holds three pairs of hinged wood doors with an eight light over wood panels. The paneled lower portion of the doors have raised cross bracing. A six light window is centered in the peak of the gable. The east façade has one window opening. A shed-roofed addition projects from the western portion of the rear (north) façade. One window opening is located east of the addition on the north façade of the garage. A loft door is located in the peak of the gable. The addition has one window opening in its east façade. The north elevation has a vehicular entry with hinged wood doors. The west façade of the addition has two entry openings with wood doors. The north elevation has one window opening and one door opening. The door opening is infilled with plywood.

A 1-story, wood-frame wagon shed is located north of the garage. The wagon shed has a rectangular footprint and gable roof. It has wood German siding, and wood doors. The primary façade of the wagon shed faces north. The façade has a vehicular entry with a pair of sliding wood beadboard doors. The west façade does not have any openings. The south façade has a vehicular entry, now infilled with plywood, and an entry door opening with a wood beadboard door. The east façade does not have any openings.

A non-contributing house is located on the northern section of the property. The house looks like a post-WWII Cape Cod house raised up and set on a 1-story concrete 1st story. The house has replacement siding covering the 2nd story. It does have wood six-over-six and eight-over-eight windows and wood four-light over two-panel wood doors.

A non-contributing late-20th c. storage shed is located west of the house.

8. Significance

Inventory No. HO-897

Period	Areas of Significance	Check and justify below		
<input type="checkbox"/> 1600-1699	<input type="checkbox"/> agriculture	<input type="checkbox"/> economics	<input type="checkbox"/> health/medicine	<input type="checkbox"/> performing arts
<input type="checkbox"/> 1700-1799	<input type="checkbox"/> archeology	<input type="checkbox"/> education	<input type="checkbox"/> industry	<input type="checkbox"/> philosophy
<input type="checkbox"/> 1800-1899	<input checked="" type="checkbox"/> architecture	<input type="checkbox"/> engineering	<input type="checkbox"/> invention	<input type="checkbox"/> politics/government
<input checked="" type="checkbox"/> 1900-1999	<input type="checkbox"/> art	<input type="checkbox"/> entertainment/ recreation	<input type="checkbox"/> landscape architecture	<input type="checkbox"/> religion
<input type="checkbox"/> 2000-	<input type="checkbox"/> commerce	<input type="checkbox"/> ethnic heritage	<input type="checkbox"/> law	<input type="checkbox"/> science
	<input type="checkbox"/> communications	<input type="checkbox"/> exploration/ settlement	<input type="checkbox"/> literature	<input checked="" type="checkbox"/> social history
	<input type="checkbox"/> community planning		<input type="checkbox"/> maritime history	<input type="checkbox"/> transportation
	<input type="checkbox"/> conservation		<input type="checkbox"/> military	<input type="checkbox"/> other: _____

Specific dates 1923, 1931, 1946, 1964 **Architect/Builder** unknown

Construction dates ca. 1925

Evaluation for:

National Register Maryland Register not evaluated

Prepare a one-paragraph summary statement of significance addressing applicable criteria, followed by a narrative discussion of the history of the resource and its context. (For compliance projects, complete evaluation on a DOE Form – see manual.)

The Murphy House is associated with events that have made a contribution to the broad patterns of Howard County history. In the period between WWI and WWII, many of the houses built in Howard County were pattern-book houses constructed for young local families and for families moving to the country from Baltimore City. These houses were often built alongside primary roadways on subdivided agricultural land. Generous lots that provided space for small-scale farming were common. The house also embodies the distinctive characteristics of its type, period, and method of construction. The house is a very intact example of a large pattern-book house, with some design elements taken from the Queen Anne style. The house features the prominent gable roof, broad front porch, and Palladian windows often associated with the style. While much larger than the Gieseke House next door, the houses do share similar detailing such as windows, doors, and porch columns that suggest they could have been constructed by the same builder.

The Murphy House is located on five lots that Morris Schapiro sold from his 1923 subdivision of the St. Charles College farms. Historically the area where St Charles was located was known as Pine Orchards. Charles Carroll of Carrollton, who built Doughoregan Manor, donated the 253-acre property for St. Charles College, a Catholic seminary. The Charter for the seminary was granted in 1831 and the college opened in 1848. Cardinal Gibbons is probably the best known alumni of the school, which burned in 1911 and was not rebuilt at this location.

In 1923, Morris Schapiro sold three lots to Milton and Nellie Murphy and two lots to Thaddeus C. Grimes. Schapiro was a wealthy local merchant, born in Russia. He lived in Howard County in 1920 and in Baltimore City in 1930. His name appears many times on the real estate index for the 1920s, suggesting that he was developing land throughout Howard County. The Murphys bought Grimes' lots in 1930. The Grimes lived in Ellicott City and Thaddeus Grimes widow and daughter built a house on College Avenue (Grimes House, HO-854) in ca. 1930. In 1930, Milton A. Murphy (aged 53) – a telephone foreman, lived on Frederick Turnpike with his wife Nellie (aged 48), son Harry (aged 23) – a public school teacher, son Clyde (aged 21) – a rail co. stenographer, and daughter Ethel (aged 13). Their house was valued at \$10,000.¹ The Murphys owned the house until 1946, when the sold the property to Hershel and Ferol James. In 1964, Ferol James, widow, sold the house to Alva and Lee and Ramsburg. The property has had three additional owners since 1968 and the house is now occupied by renters.

¹ 1930, E.D. 14-4, sheet 3A.

9. Major Bibliographical References

Inventory No. HO-897

Department of Commerce – Bureau of the Census. **Census of United States: Population Schedule, 1900, 1910, 1930.**
Howard County Land Records, Dorsey Building, Columbia. See attached chain of title for specific libers and folios.

Sears, Roebuck and Company. **Small Houses of the Twenties: The Sears, Roebuck 1926 House Catalog.** Mineola, New York:
Dover Publications, 1991.

Stevenson, Katherine Cole and H. Ward Jandl. **Houses by Mail: A Guide to Houses from Sears, Roebuck and Company.**
New York: John Wiley & Sons, 1995.

10. Geographical Data

Acreage of surveyed property 6 acres
Acreage of historical setting 20 acres
Quadrangle name Sykesville

Quadrangle scale: 1:24,000

Verbal boundary description and justification

The boundary of the Milton A. Murphy House corresponds to Howard County Map 16, Grid 24, Parcel 63, which is the buildings' current legal lot.

11. Form Prepared by

name/title	Jennifer Goold, Historic Sites Surveyor		
organization	Howard County Department of Planning and Zoning	date	September 13, 2005
street & number	3430 Courthouse Drive	telephone	410-313-4335
city or town	Ellicott City	state	MD

The Maryland Inventory of Historic Properties was officially created by an Act of the Maryland Legislature to be found in the Annotated Code of Maryland, Article 41, Section 181 KA, 1974 supplement.

The survey and inventory are being prepared for information and record purposes only and do not constitute any infringement of individual property rights.

return to: Maryland Historical Trust
DHCD/DHCP
100 Community Place
Crownsville, MD 21032-2023
410-514-7600

Murphy House (140-897)
 10546 Frederick Road, Ellicott City
 Howard County
 Deed Trace

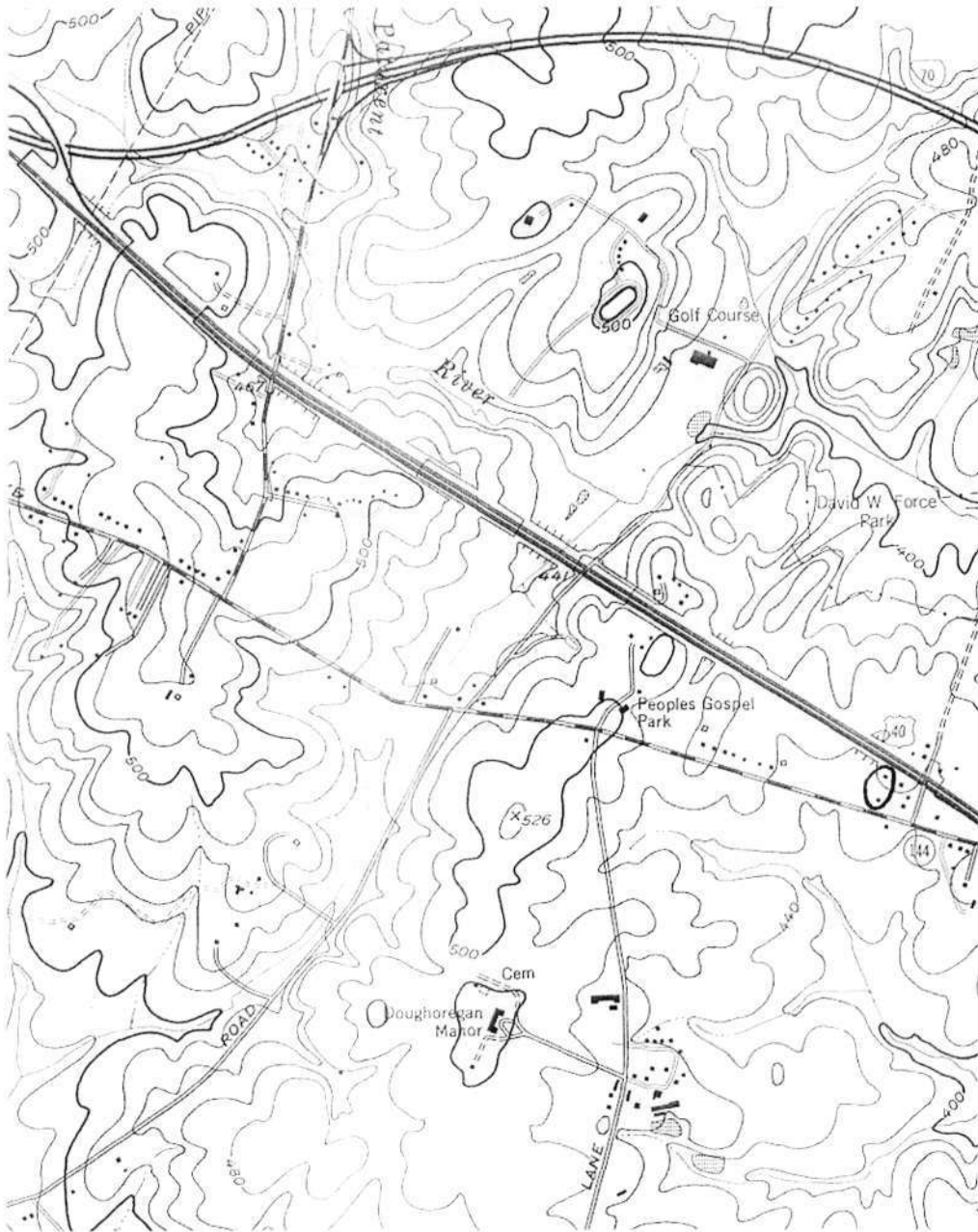
Date	Grantor	Grantee	Liber	Folio	Trans.	Amt.	Acreage	Notes
05-02-1989	Charles H. Marcus	Charles and Ellen Nemphos, etal	1997	50	Deed	365,000	5.905	Part of Lots 30, 31, 32, 33, and 34
08-12-1981	Harold L. Pruitt and Eleanor Pruitt	Charles H. Marcus and Barbara F. Marcus (2/3 interest) and Bruce L. Marcus (1/3 interest)	1067	687	Deed	150,000	5.905	Part of Lots 30, 31, 32, 33, and 34
05-27-1968	H. Lee Ramsburg and Alva S. Ramsburg	Harold L. Pruitt and Eleanor Pruitt	488	139	Deed	5.00	5.905	Part of Lots 30, 31, 32, 33, and 34
04-15-1964	Ferol R. James, widow	Alva S. Ramsburg, Jr and H. Lee Ramsburg	416	641	Deed	5.00	5.905	Part of Lots 30, 31, 32, 33, and 34
04-30-1946	Milton A. Murphy and Nellie B. Murphy	Herschel M. James and Ferol R. James	189	469	Deed	5.00	12.18 and 8.12	Part of Lots 30, 31, 32, 33, and 34
03-02-1931	Thaddeus C. Grimes and Caroline Grimes	Milton A. Murphy and Nellie B. Murphy	140	514	Deed	5.00	8.12	Part of Lots 30, 31, 32, 33, and 34
06-26-1923	Morris Schapiro and Rebecca Schapiro	Milton A. Murphy and Nellie B. Murphy	118	242	Deed	5.00	12.18	Lots 30, 31, and 32, in the subdivision of the Saint Charles College Farm. Covenants included: "that at no time shall the land hereby granted, or nay part thereof, be conveyed to, or owned by, a negro, or person of negro extraction, and that this covenant shall run with the land, and bind the parties hereto, their heirs and assigns,

Murphy House (170-897)
 10546 Frederick Road, Ellicott City
 Howard County
 Deed Trace

								forever.
06-26-1923	Morris Schapiro and Rebecca Schapiro	Thaddeus C. Grimes	118	292	Deed	5.00	8.12	Lots 33 and 34 in the subdivision of the Saint Charles College Farm. Covenants included: "that at no time shall the land hereby granted, or nay part thereof, be conveyed to, or owned by, a negro, or person of negro extraction, and that this covenant shall run with the land, and bind the parties hereto, their heirs and assigns, forever.
08-22-1922	Trustees of St. Charles College	Morris Shapiro	118	77	Deed	5.00		The property hereby conveyed comprising ten tracts of land conveyed to the said party of the first part by the following deeds: deed from Harry M. Benzinger and Edward M. Hammond, Trustees, dated April 27 th 1914 and recorded as aforesaid in Liber 97, folio 207; deed from Anita Cole and husband dated May 5 th 1903 and recorded as aforesaid in Liber 78, folio 197; deed from Royal G. Harper Carroll dated May 7 th 1903 and recorded in Liber 78, folio 195; mary A. de la Bassetiere and husband dated January 30 th 1897 and recorded in Liber 65 folio 584; deed from John J. Vernay and husband dated October 15, 1884 and recorded in Liber 48 folio 387; deed from Charles Gerwig and wife et al dated April 10, 1883 and recorded in Liber 46, folio 176; deed from Michael C. Jenkins dated August 10 th 1869 and recorded in Liber 29, folio 420; deed from Charles Carroll et al dated December 10 th 1860 and recorded in Liber 21 folio 216; deed from John S. Tyson et al dated October 10 th 1868 and recorded in Liber 46 folio 155. See also deeds recorded among said Land Records in Liber 93 folio 470; Liber 95 folios 227, 337, 493,

Murphy House (Ho-897)
10546 Frederick Road, Ellicott City
Howard County
Deed Trace

								530, 560, 571, 574, 573, 575, 577, 578; Liber 96, folios 4, 5, 77, 98, 149, 150, 243, 311, 495; Liber 97, folios 207, 264, 352.
--	--	--	--	--	--	--	--	---



Murphy House (HO-897)
10546 Frederick Road, Ellicott City
Howard County
USGS Sykesville Quad



Murphy House (HO-897)
10546 Frederick Road, Ellicott City
Howard County
Site plan/Aerial photo



Distance: ft

Zoom: ft



Murphy House (HO-897)
10546 Frederick Road, Ellicott City
Howard County
Site plan/Aerial photo



HO-897

Milton A. Murphy House

Howard County, MD

Jennifer Goold

09/05

MD SHPO

View N. Shows primary facade.

1066



HO-897

Milton A. Murphy House

Howard County, MD

Jennifer Good

09-05

MD SHPO

View NE. Shows front + side facade.

Zob 6



HO-897

Milton A. Murphy House

Howard County, MD

Jennifer Gould

09/05

MD SHPO

View SE. Shows side & rear facades.

3 of 6



H0-897

Milton A. Murphy House

Howard County, MD

Jennifer Good

09/05

MD SHPO

View SW.

013 11 102 1000- 6429

Shows side & rear facades.

4 of 6



HO-897

Milton A. Murphy House

Howard County, MD

Jennifer Gould

69/05

MD SHPO

View N. Snowz House + garage.

5066



HO-897

Milton A. Murphy House

Howard County, MD

Jennifer Gould

09/05

MD SHPO

View S. Shows second house on the property

+ outbuilding.

6066