

HO-482
Catherine Kuhn House
8572 Main Street (MD 144)
Ellicott City

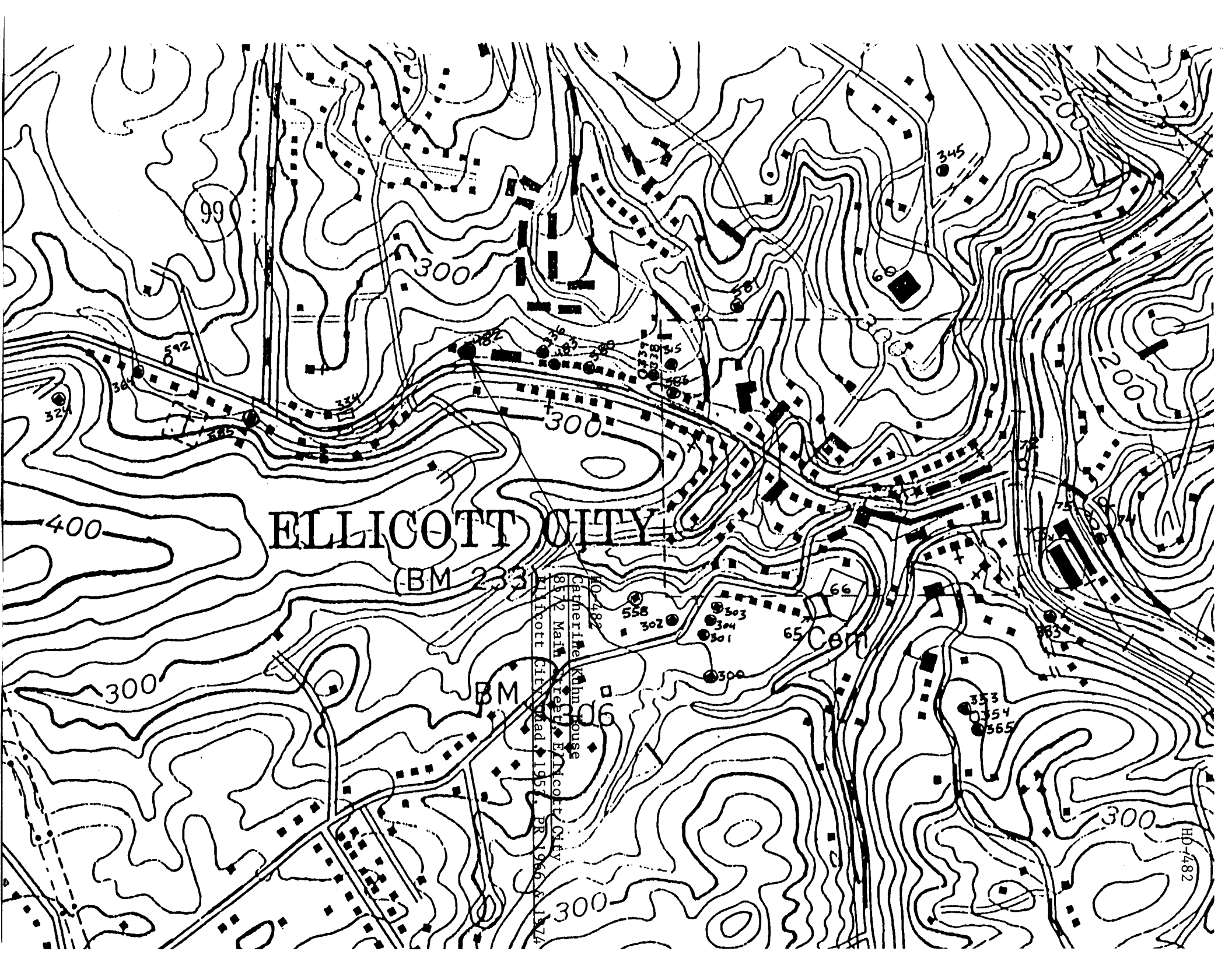
Located on the north side of Main Street on the west side of Ellicott City, the Catherine Kuhn House is a half stone-half frame duplex with a shared brick stove chimney in the center of the gable roof. Four bays wide and two stories high, the duplex has its doors in the first and fourth bays. All front (south) facade windows are double hung with 6/6 lights. The west (left) half of the house is stone to just above the sills of the 2nd floor windows, and frame above. The first floor window to the east of the western door has a splayed brick jack arch. The east half of the house is all frame.

There is a first floor window centered in the (stone) west gable end, also with a splayed brick jack arch. Below this, in the basement level, is a door. A one-story shed-roofed addition has been made to the rear of the building. The west facade of this addition has a 6/6 sash window on the first floor and an enclosed porch on the basement level.

The east facade has one 6/6 sash window centered on the first floor and one on the second floor, just north of center. There is a small 6-light casement window in the stone foundation basement level. This elevation of the shed-roofed addition has a 1/1 window on the first floor, and an enclosed porch around the basement level.

The rear facade of the building has a frame addition covering the first floor and basement levels. This addition is three bays wide with 6/6 windows in the

outer bays on both floors, and one 1/1 window between and slightly east of center on the second floor. The main block is four bays wide, with 6/6 windows in all bays of the second floor, except for the next-to-westernmost (third from the left).



ELLICOTT CITY

(BM 233)

40-482
Catherine Kuhn House
1872 Main Street, Ellicott City,
Md., 1957, PR 1960 & 1974

BM

65 BM

HO-482



Ho. ~~0000~~

482

Silico City

333E

KS 8/70

Catherine Kuhn House

~~Peter Van Rossum~~ 8572² W. Main St