

HO-364  
Essie Hammond House  
(Joseph & Ave Young House)  
8777 Main Street, Ellicott City

Facing north on the south side of Main Street, this 3-bay wide gable-front stone house is 2 1/2 stories high, with a new shed-roofed front porch with square posts and a balustrade. Windows are 6/6 sash, with 2 flanking the central door on the first floor (which is covered with stucco), three on the second floor, and one in the attic gable. Windows have splayed stone arches.

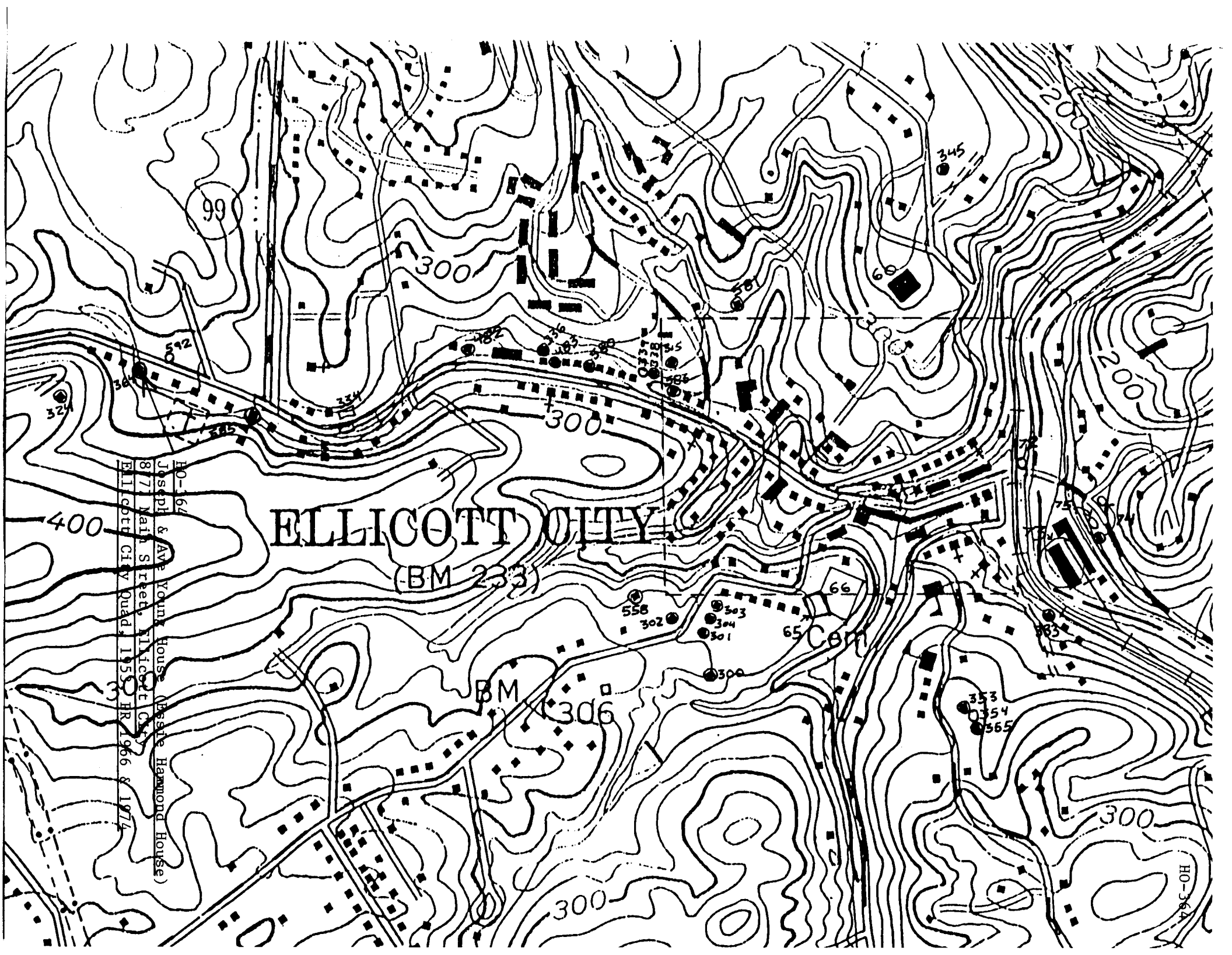
Four bays long, the building once had a frame addition on the east facade, covering the southernmost two bays. This wing has been removed, but was three bays wide and two stories high, with the gable roof perpendicular to that of the stone house. This wing was actually a separate residence, with its own entrance and address. The first floor had two doors, in the east and center bays, and a 6/6 sash window in the west bay. The second floor had three 6/6 sash windows. There was an internal brick chimney between this frame house and the surviving stone house. A wraparound porch with square posts covered the front of this frame house and continued around the east end, covered the south facade, and turned again, extending to cover the east facade of the stone house. This porch has now been removed, also. The southeast corner of this porch was enclosed. One section of balustrade remained in a 1972 photo, to the north of this enclosed section. The attic gable of this frame house held a 6/6 sash window. The rear (south) facade of this frame house had three 6/6 sash windows on the second floor, fenestration of the first floor is indeterminable, as

part of it was covered with an enclosed porch, and the west bay is in shadow in the 1972 photo.

The area where the frame house had joined the stone house is now covered with vertical wooden siding. The remaining two (southernmost) bays of the east facade of the stone house contain two entrances. The northern of these two doors has a four-light transom, and paneled jambs. As mentioned above, the porch formerly covering these two entrances has been removed. There is now a deck outside these doors. The second floor contains two 6/6 sash windows.

The south facade of the stone house is three bays wide, with an exterior chimney in the center, which is stone up to the attic level, and brick above. Flanking this chimney are 6/6 windows with splayed stone arches on the first two floors, and small 4/2 sash windows in the attic gable.

The west facade has three 6/6 sash windows with splayed stone arches per floor, in the (l-r) first, third, and fourth bays. The second floor windows still have their shutters.

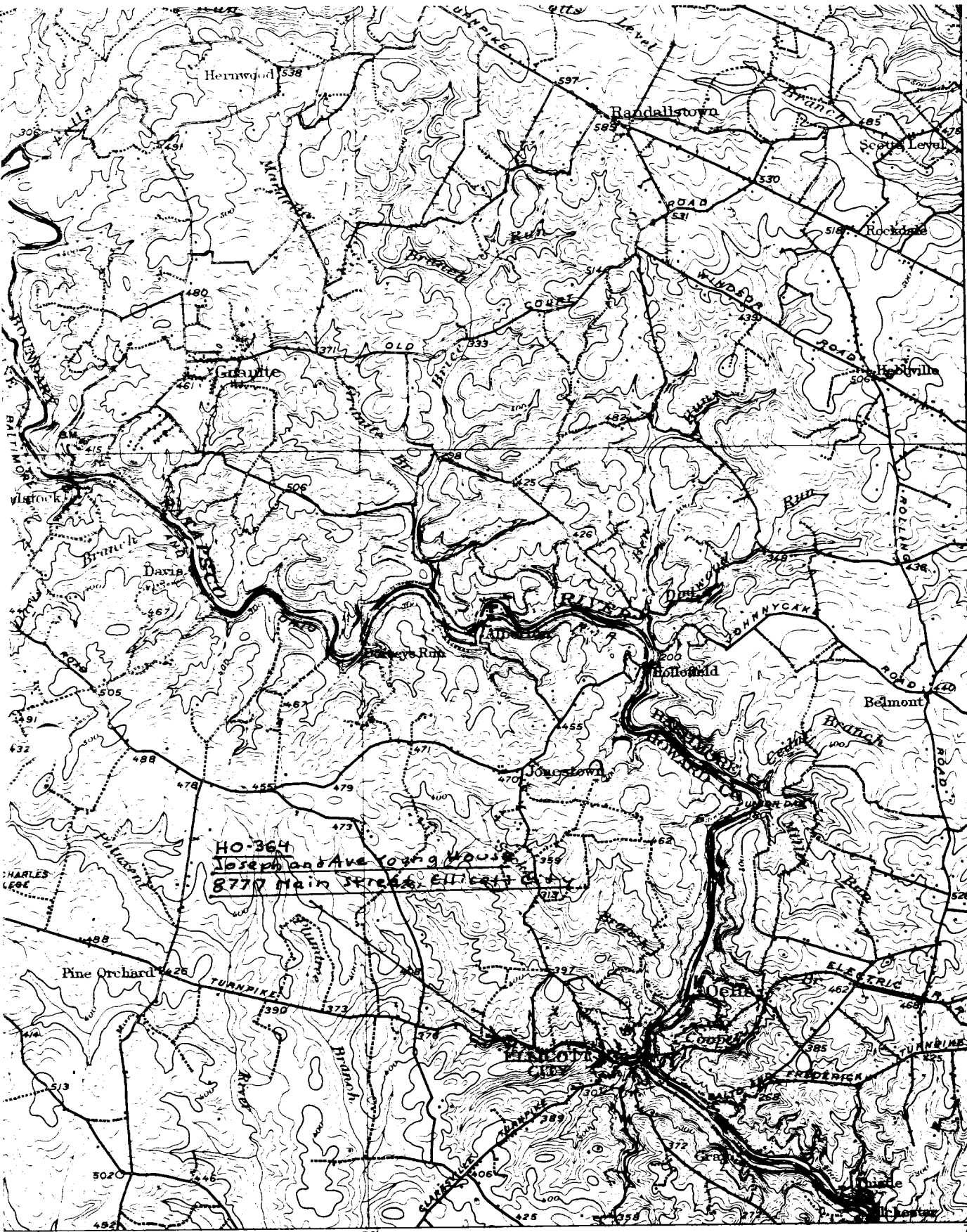


# ELLICOTT CITY

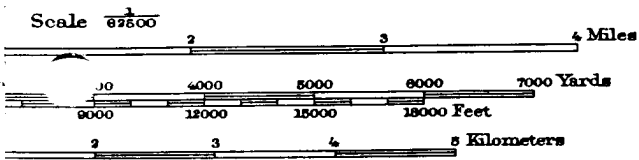
(BM 233)

HO-164  
 Joseph & Ave Young House (Nearside Hammond House)  
 877 Nain Street, Ellicott City  
 Ellicott City Quad, 1955, HR 1966 & 1974

HO-564



HO-364  
 Joseph and Ave Young House  
 8777 Main Street, Ellicott City

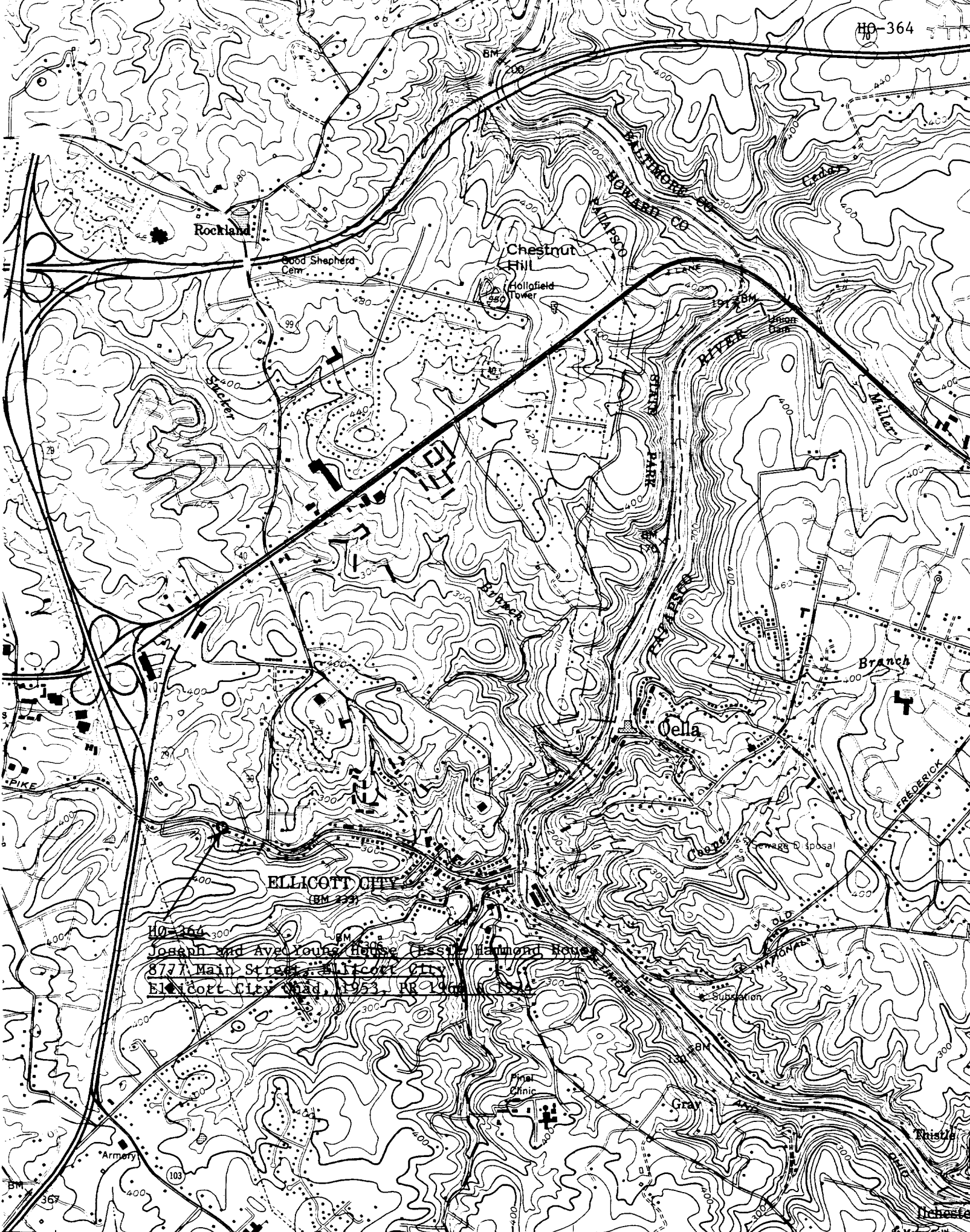


Edition of April 1906, reprinted 1944  
 Polyconic projection

ELLICOTT, MD.

contour interval 20 feet  
 datum is mean sea level

N 3915-W 7645/15



HP-364  
 Joseph and Ave Young House (Essie Hammond House)  
 877 A Main Street, Ellicott City  
 Ellicott City, Md. 21531, RR 1966, N 1924



Ellisworth City

8777 Main St.

HO. 364

827E

Joseph & Ave Young house

RE. 8/72





Ellicott City 8777 Main St

HO. 364

827E

ASS 8/72  
354

Joseph & Ave Young house