

HO-160  
Bassler House  
Cedar Lane, Clarksville  
(site?, now on Sunny Spring)

c. 1830-1840

Located in the field by Michael O. Bourne in July of 1970, the house was listed with the Rouse Company Historic Structures, in Columbia.

This 2-story stone house is five bays long with a rear wing. A small stone springhouse was on the property, as well.

In 1970, Tax Map #35 listed the property as owned by Howard Research & Dev. Corp.

HO-160  
1401607404

Bassler House

Cedar Lane, Clarksville (Now on Sunny Spring)

located ~~in~~ filed by MRS 7/70 -

listed with Rouse Company Historic Structures - Columbia

2-story stone - 5 bays long w/wing  
c. 1830-40

Tax Map # 35

Ind. Reg.

Howard Research + Dev. Corp.

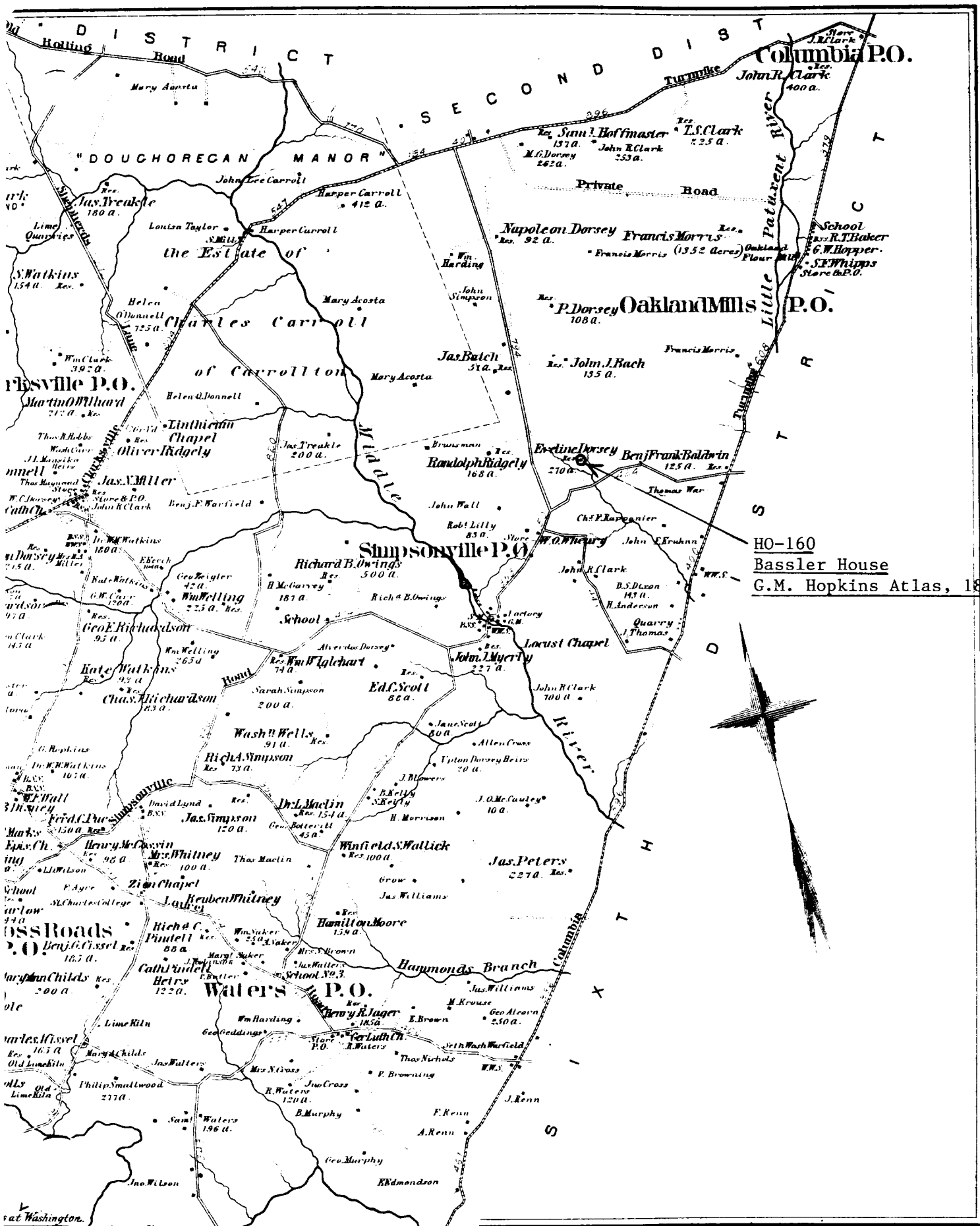
414/697

139.02 A.

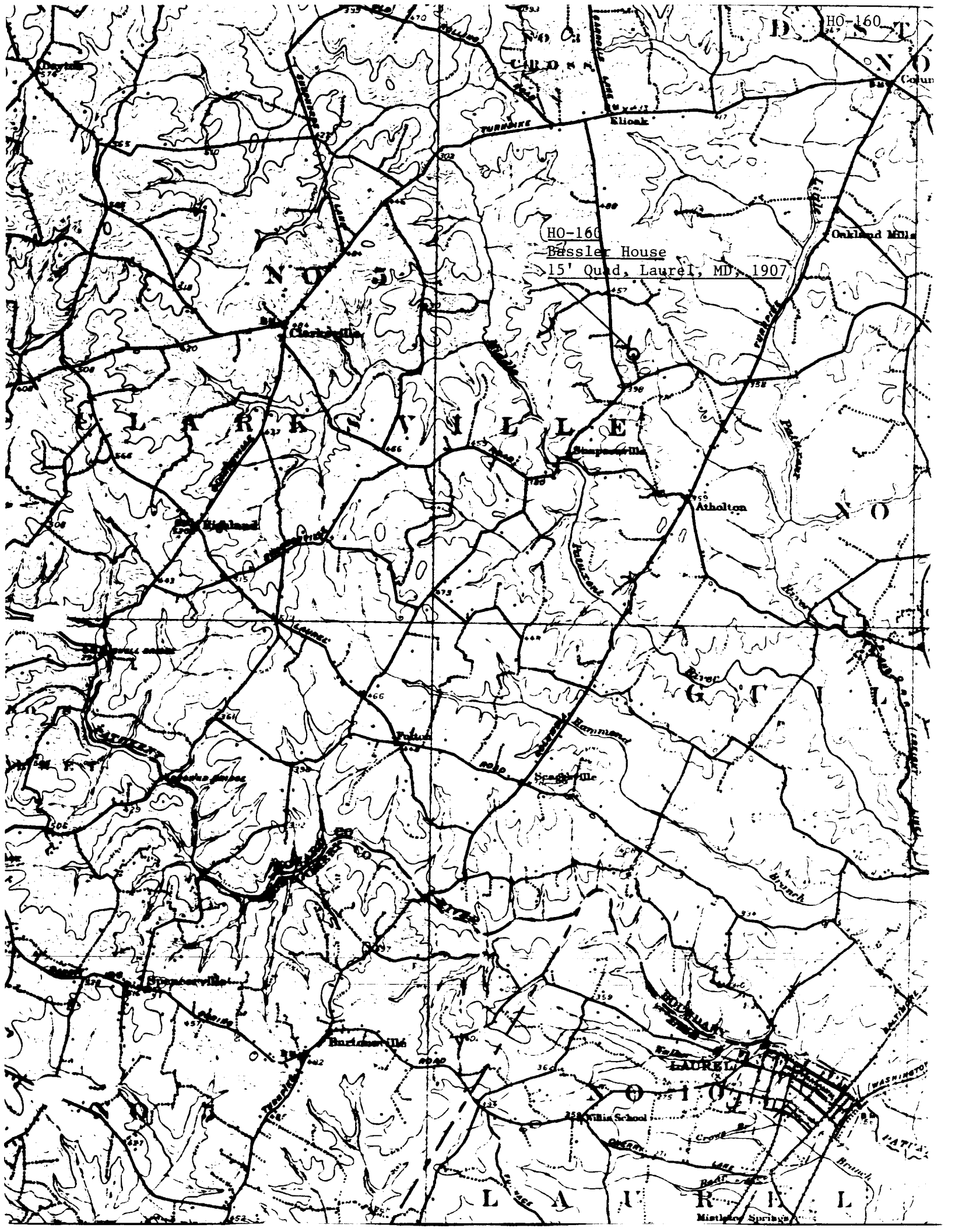
p. 48

CHAMPAGNE - SHEET PROTECTOR 1900

CHAMPAGNE - SHEET PROTECTOR 1900



HO-160  
 Bassler House  
 G.M. Hopkins Atlas, 1878



HO-160  
Bessler House  
15' Quad, Laurel, MD, 1907

D. HO-160

LAUREL

LAUREL

LAUREL

LAUREL

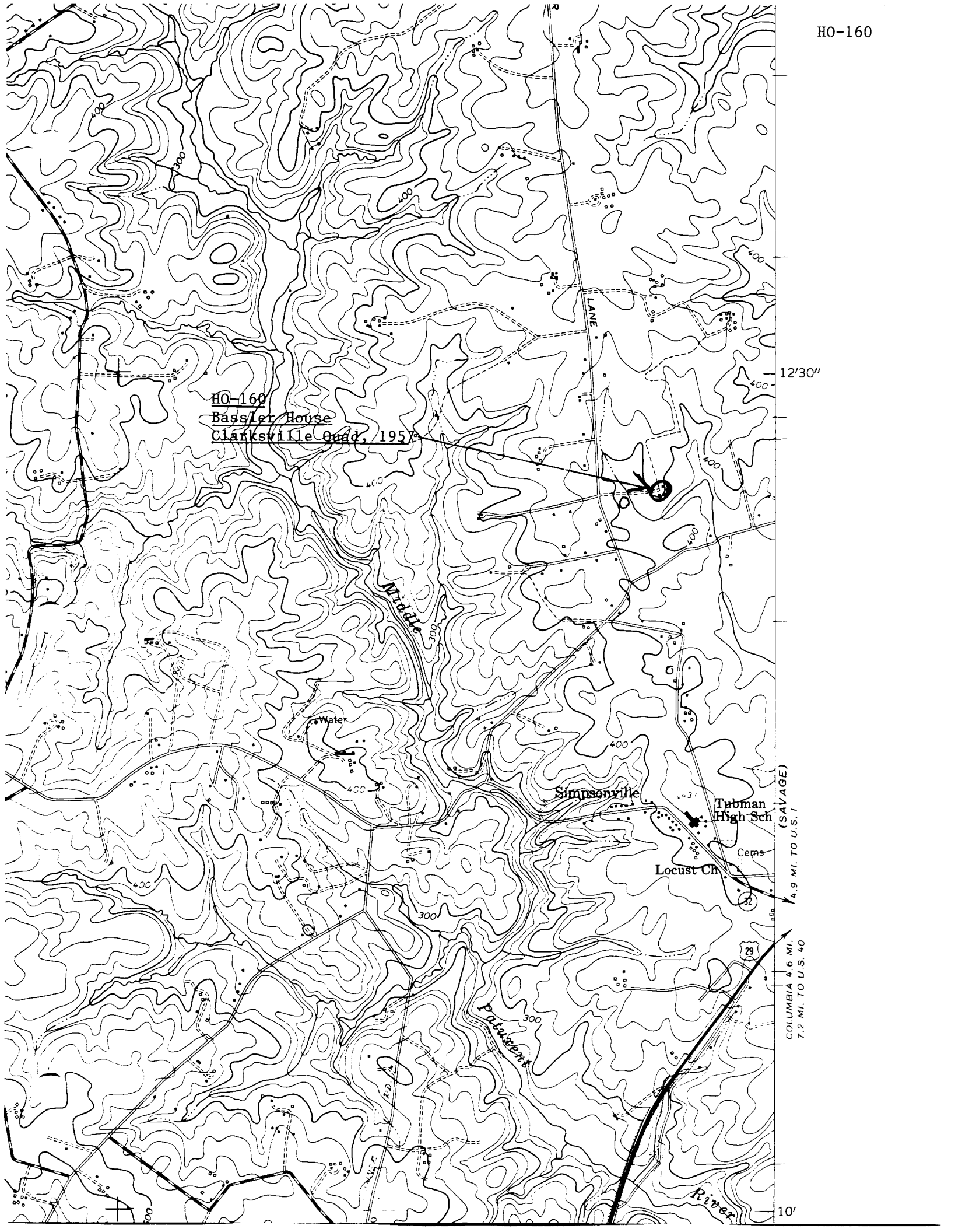
HO-160  
Bassler House  
Clarksville Quad, 1957

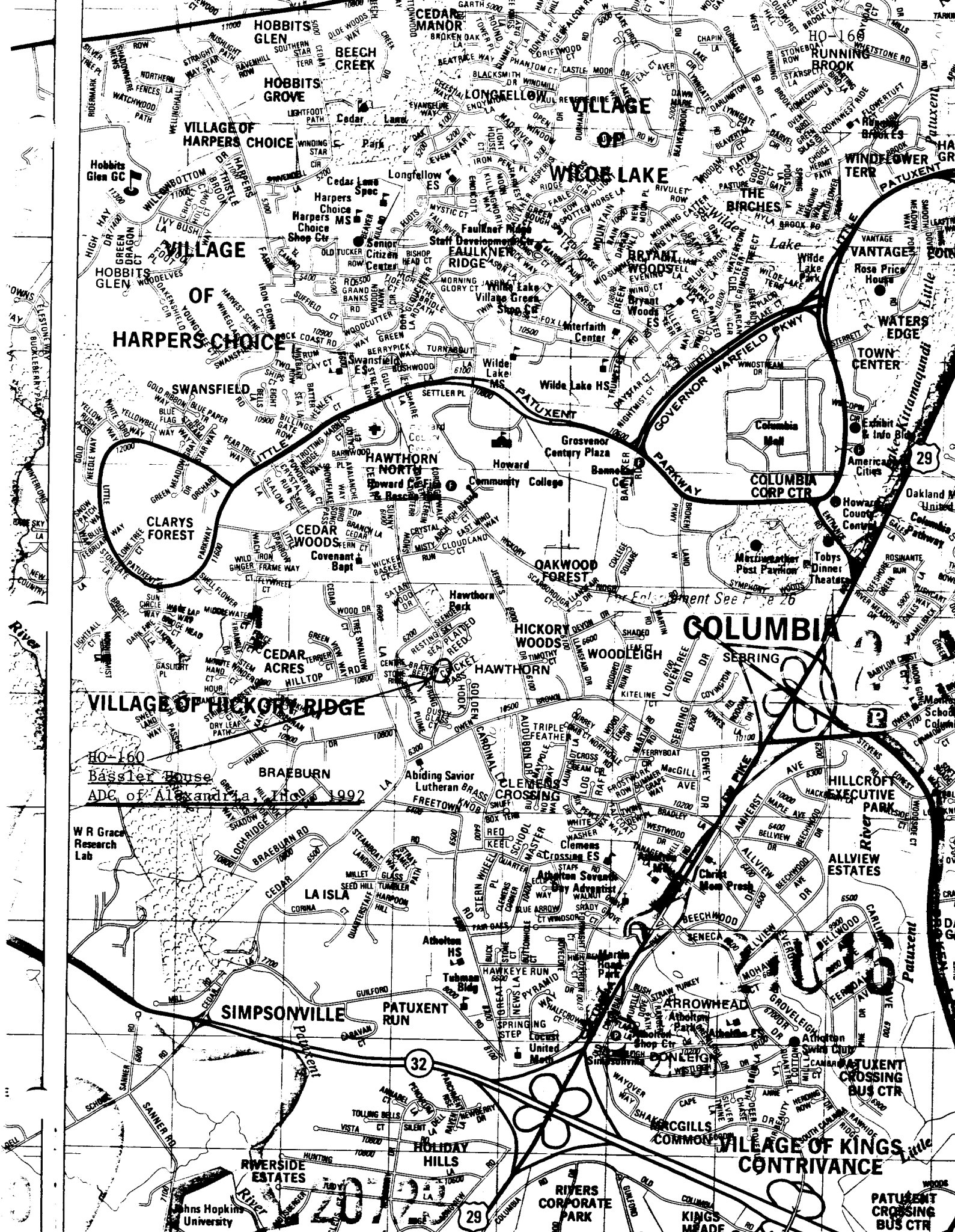
12'30"

(SAVAGE)  
4.9 MI. TO U.S. 1

COLUMBIA 4.6 MI.  
7.2 MI. TO U.S. 40

10'





**HARPERS CHOICE**

**VILLAGE OF HARPERS CHOICE**

**VILLAGE OF HARPER'S CHOICE**

**CLARYS FOREST**

**VILLAGE OF HICKORY RIDGE**

HO-160  
Bassler House  
ADC of Alexandria, Ind. 1992

**SIMPSONVILLE**

**COLUMBIA**

**VILLAGE OF KINGS CONTRIVANCE**

W R Grace Research Lab

Johns Hopkins University

32

29

29

HO-160

HO-160

HO-160

HO-160

HO-160

HO-160

HO-160

HO-160

HO-160

HO-160

HO-160

HO-160

HO-160

HO-160

HO-160

HO-160

HO-160

HO-160

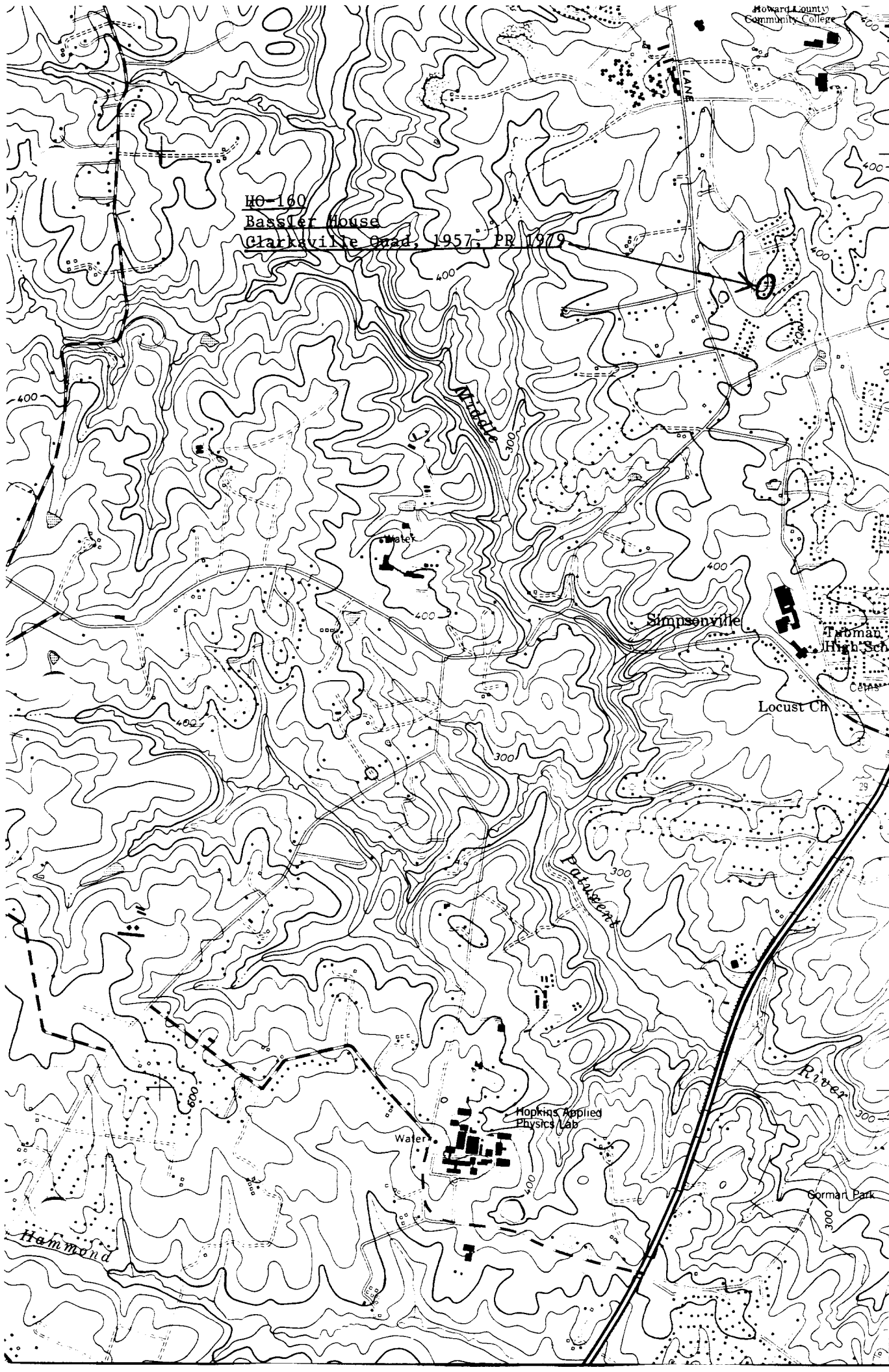
HO-160

HO-160

HO-160

HO-160

HO-160



4342  
12'30"  
4341  
4340  
4.9 MI. TO U.S. 1 5662 III NE (SAVAGE)  
COLUMBIA 4.6 MI.  
7.7 MI. TO U.S. 40  
4337  
10'  
4336





H0160

4210

Baseler house



HO 160

4210

Bassler house

JSZ Mar. 72



HO 160

4210

Bassler Spring house

SEE Mar 72