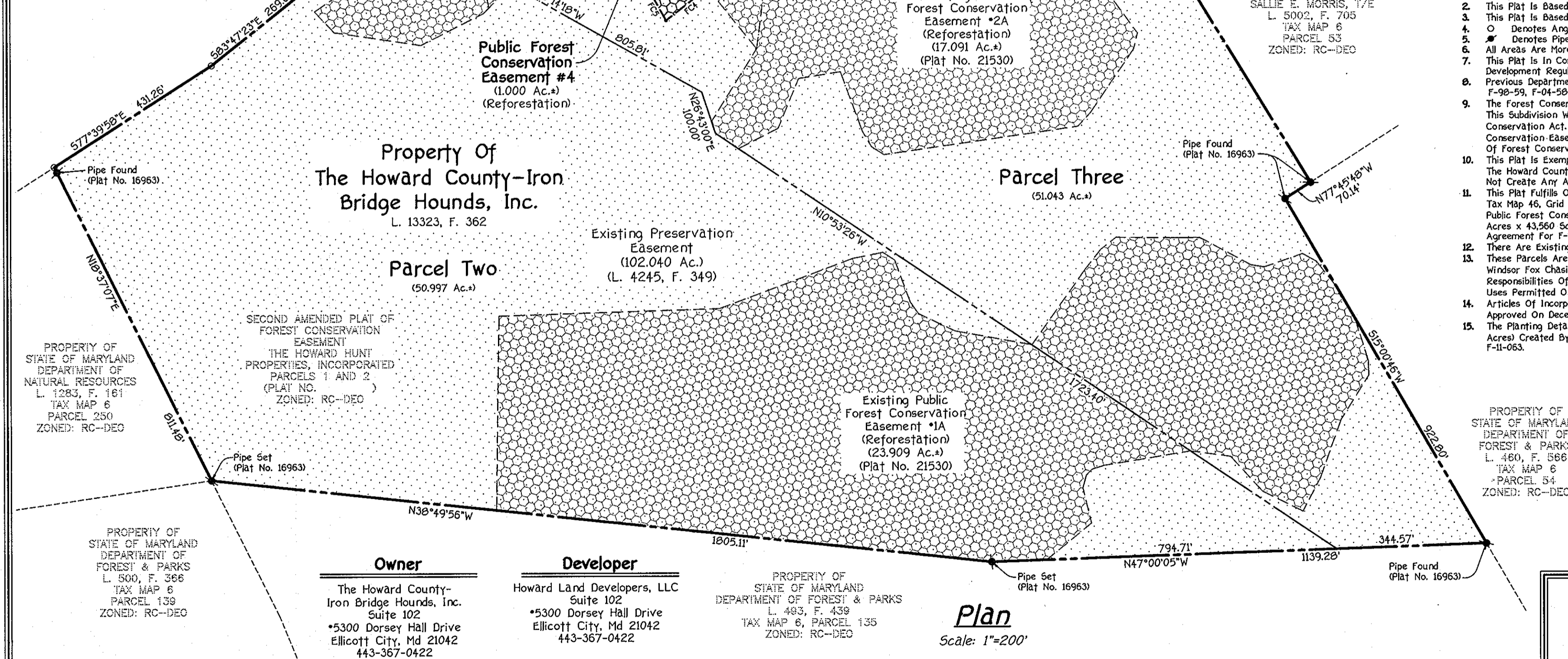


Density Exchange Tabulation (*)				
	First Exchange	Second Exchange	Third Exchange	Fourth Exchange
Receiving Parcel Information	Quarterfield III (F-90-27) Tax Map 23, Parcels 77 & 84	Sloping Ridge (F-97-102) Tax Map 27, P/O Parcel 19	Gather Hunt, Sec. 1, Area 1 (F-90-24) T. H. 23, Parcel 128	Heyn Property (F-90-59) Tax Map 10, Parcel 39
Total Parcel Computed Acreage	102,040 Acres	102,040 Acres	102,040 Acres	102,040 Acres
Preservation Parcel Acreage	102,040 Acres	102,040 Acres	102,040 Acres	102,040 Acres
DCO Units Created (4:25)	102,040 / 4.25 = 24	94,790 / 4.25 = 22	90,540 / 4.25 = 21	22,540 / 4.25 = 5
DCO Units Sent (4:25)	1 Unit (Retained For The On-Site Residence)	1 (1 x 4.25 = 4.25 Acres)	16 (16 x 4.25 = 68 Acres)	0
DCO Units Created (3:0)	97,790 / 3 = 32	90,540 / 3 = 30	22,540 / 3 = 7	22,540 / 3 = 7
DCO Units Sent (3:0)	1	0	0	4
Acreage Of Easement Remaining	97,790 - 3 = 94,790 Acres	97,790 - 4.25 = 90,540 Acres	90,540 - 68 = 22,540 Acres	22,540 - 12 = 10,540 Acres

**Reservation Of Public Utility And Forest Conservation Easements**

\* Developer Reserves Unto Itself, Its Successors And Assigns, All Easements Shown On This Plan For Water, Sewer, Storm Drainage, Other Public Utilities And Forest Conservation (Designated As "Forest Conservation Area"), Located In, On, Over, And Through Parcels Two And Three. Any Conveyances Of The Aforesaid Parcels Shall Be Subject To The Easements Herein Reserved, Whether Or Not Expressly Stated In The Deeds Conveying Said Parcels. Developer Shall Execute And Deliver Deeds For The Easements Herein Reserved To Howard County, With A Metes And Bounds Description Of The Forest Conservation Area. Upon Completion Of The Public Utilities And Their Acceptance By Howard County, And In The Case Of The Forest Conservation Easement(s), Upon Completion Of The Developer's Obligations Under The Forest Conservation Installation And Maintenance Agreement Executed By Developer And The County, And The Release Of Developer's Surety Posted With Said Agreement, The County Shall Accept The Easements And Record The Deeds Of Easement In The Land Records Of Howard County.

\* For Information Purposes Only.



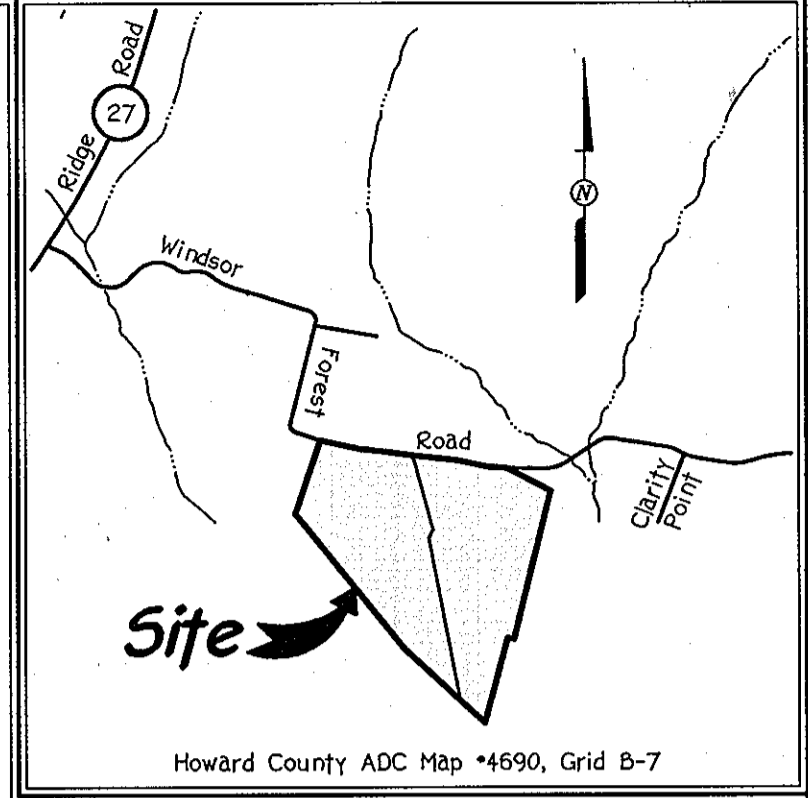
**Legend**

- Existing Public Forest Conservation Easement (Plat Nos. 21530 And 21530)
- Existing Preservation Easement (L. 4245, F. 349)
- Public Forest Conservation Easement \*4 Created By Recordation Of This Plat

The Requirements S-3-100, The Real Property Article, Annotated Code Of Maryland, 1986 Replacement Volume, (As Supplemented As Far As They Relate To The Making Of This Plat And The Setting Of Markers Have Been Complied With.

*Terrell A. Fisher* 8/16/2011 Date  
 (Registered Land Surveyor)  
 By: Donald R. Reuwer, Jr., President 8/3/11 Date

Forest Conservation Easement Chart		
Easement No.	Project Name	File Nos. & Area
Existing Public Forest Conservation Easement *1A (Reforestation)	Amended Plat Of Forest Conservation Easement The Howard Hunt Properties, Incorporated, Parcels 1 And 2	GTW's Waverly Woods Section 13 (F-04-058) Plat No. 21530 23,909 Ac.
Existing Public Forest Conservation Easement *2A (Reforestation)	Amended Plat Of Forest Conservation Easement The Howard Hunt Properties, Incorporated, Parcels 1 And 2	GTW's Waverly Woods Section 13 (F-04-058) Plat No. 21530 17,091 Ac.
Existing Public Forest Conservation Easement *3 (Reforestation)	Second Amended Plat Of Forest Conservation Easement The Howard Hunt Properties, Incorporated, Parcels 1 And 2	Forest Green Section 13 (F-11-020) Plat No. 21530 1,300 Ac.
Public Forest Conservation Easement *4 (Reforestation)	Third Amended Plat Of Forest Conservation Easement The Howard County-Iron Bridge Hounds, Inc., Parcels Two And Three	Cherrytree View (F-11-063) 1,000 Ac.



**General Notes:**

- Subject Property Zoned RC-DEO Per The 02/02/04 Comprehensive Zoning Plan And The "Comp-Lite" Zoning Amendments Dated 07-28-06.
- This Plat Is Based On A Boundary Survey Performed By LDE, Inc. On September, 1996.
- This Plat Is Based On An Assumed Coordinate System As Identified On Plat No. 16963.
- O Denotes Angular Change In Bearing Of Boundary Or Rights-Of-Way.
- # Denotes Pipe Found/Set By LDE Inc. And Identified On Plat No. 16963.
- All Areas Are More Or Less.
- This Plat Is In Compliance With The Amended Fifth Edition Of The Subdivision And Land Development Regulations.
- Previous Department Of Planning And Zoning File Nos: F-97-182, F-98-24, F-98-27, F-98-59, F-04-58, F-04-58 (FC-A), F-11-063 And F-11-020(FC).
- The Forest Conservation Easement Has Been Established To Fulfill The Requirements Of This Subdivision With Respect To Section 16.1200 Of The Howard County Code And Forest Conservation Act. No Clearing, Grading Or Construction Is Permitted Within The Forest Conservation Easement, However, Forest Management Practices As Defined In The Deed Of Forest Conservation Easement Are Allowed.
- This Plat Is Exempt From Perimeter Landscaping In Accordance With Section 16.124 Of The Howard County Code And Landscape Manual Since It Is A Revision Plat That Does Not Create Any Additional Lots.
- This Plat Fulfills Off-Site Forest Conservation Obligations For "Cherrytree View" (F-11-063), Tax Map 46, Grid II, Parcel 55 By The Placement Of 1,000 Acres Of Reforestation Into Public Forest Conservation Easement No. 4. Surety In The Amount Of \$21,780.00 (1,000 Acres x 43,560 Sq.Ft./Acre x \$0.50/Sq. Ft.) Will Be Provided With The Developer's Agreement For F-11-063.
- There Are Existing Dwellings/Structures Located On Parcels 1 And 2 To Remain.
- These Parcels Are Encumbered By A Preservation Easement With Howard County And Windsor Fox Chasing Homeowners Association. This Agreement Outlines The Maintenance Responsibilities Of The Owner, Prohibits Subdivision Of The Parcel, And Enumerates The Uses Permitted On The Property.
- Articles Of Incorporation For Windsor Forest Fox Chasing Homeowners Association Approved On December 29, 1995 By The State Department Of Taxation And Assessment.
- The Planting Details Of The Forest Conservation Plan For This Forest Easement (1,000 Acres) Created By Are Included In The Final Construction Plans For Cherrytree View F-11-063.

**Public Forest Conservation Easement #4 Created By This Plat (Reforestation) 1,000 Ac.\***

Line	Bearing	And Distance
FC1	N 89°09'33" E	69.22'
FC2	S 75°23'38" E	239.13'
FC3	S 06°31'42" W	267.77'
FC4	N 83°28'18" W	121.71'
FC5	N 16°15'25" E	70.15'
FC6	N 10°46'26" W	156.07'
FC7	N 57°12'21" W	82.10'
FC8	N 60°04'52" W	49.06'
FC9	N 52°09'13" W	35.68'

**Owner**  
 The Howard County-Iron Bridge Hounds, Inc.  
 Suite 102  
 \*5300 Dorsey Hall Drive  
 Ellicott City, Md 21042  
 443-367-0422

**Developer**  
 Howard Land Developers, LLC  
 Suite 102  
 \*5300 Dorsey Hall Drive  
 Ellicott City, Md 21042  
 443-367-0422

PROPERTY OF STATE OF MARYLAND DEPARTMENT OF FOREST & PARKS L. 483, F. 439 TAX MAP 6, PARCEL 135 ZONED: RC-DEO

**Plan**  
 Scale: 1"=200'

**FISHER, COLLINS & CARTER, INC.**  
 CIVIL ENGINEERING CONSULTANTS & LAND SURVEYORS  
 CENTENNIAL SQUARE OFFICE PARK - 10272 BALTIMORE NATIONAL PIKE  
 ELLICOTT CITY, MARYLAND 21042  
 (410) 461-2855

APPROVED: Howard County Department Of Planning And Zoning.

*Kurt Shandor* 10/06/11 Date  
 Director gmf

**OWNER'S CERTIFICATE**

The Howard County-Iron Bridge Hounds, Inc., By Donald R. Reuwer, Jr., President, Owner Of The Property Shown And Described Hereon, Hereby Adopts This Plan In Consideration Of The Approval Of This Plat Of Forest Conservation Easement By The Department Of Planning And Zoning, To Establish A Forest Conservation Easement.

Witness My Hand This 31<sup>st</sup> Day Of August, 2011.

*Donald R. Reuwer, Jr.*  
 The Howard County-Iron Bridge Hounds, Inc., Owner  
 By: Donald R. Reuwer, Jr., President

*Terrell A. Fisher*  
 Witness

**SURVEYOR'S CERTIFICATE**

I Hereby Certify That The Final Easement Plat Shown Hereon Is Correct; That It Defines A Forest Conservation Easement On A Portion Of A Parcel Of Ground Conveyed By The Howard Hunt Properties, Incorporated To The Howard County-Iron Bridge Hounds, Inc. By Deed Dated June 14, 2011 And Recorded In The Land Records Of Howard County, Maryland In Liber No. 13323, Folio No. 362. All Monuments Are In Place.

*Terrell A. Fisher*  
 Terrell A. Fisher, Professional Land Surveyor No. 10692  
 Expiration Date: December 13, 2011 8/16/2011 Date

RECORDED AS PLAT No. \_\_\_\_\_ ON \_\_\_\_\_ AMONG THE LAND RECORDS OF HOWARD COUNTY, MARYLAND.

**Third Amended Plat Of Forest Conservation Easement**  
**The Howard County-Iron Bridge Hounds, Inc.**  
 Parcels Two And Three

Being A Revision To A Plat Entitled "Second Amended Plat Of Forest Conservation Easement, The Howard Hunt Properties, Incorporated, Parcels 1 And 2" Recorded Among The Land Records Of Howard County, Maryland As Plat No.

Zoned: RC-DEO

Tax Map No. 6, P/O Parcel No. 51, Grid 15  
 Tax Map No. 6, P/O Parcel No. 159, Grid 14  
 Fourth Election District, Howard County, Maryland

Date: August 16, 2011 Scale: As Shown Sheet 1 of 1

F-11-063 (FG)

K:\SDS\KPKO\130788.dwg section 13.dwg\3RD-REVISION PLAT-HOWARD HUNT PROPERTIES-TO CHERRYTREE VIEW.dwg, Layout1, 8/16/2011 11:37:30 AM, dlsrett, 1:1