

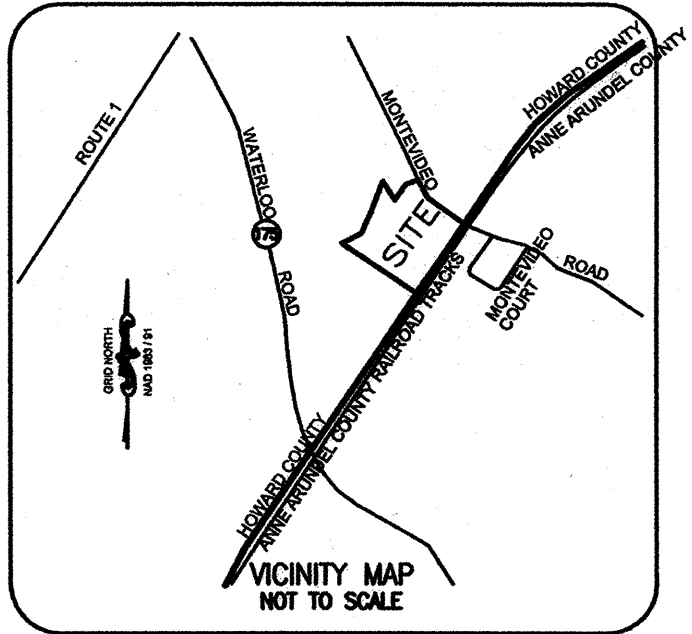
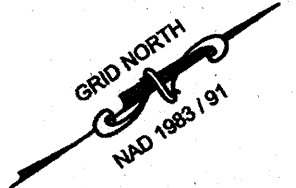
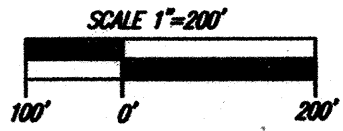
FOREST CONSERVATION EASEMENT LINE TABLE with columns: LINE, BEARING, LENGTH. Includes lines L1 through L53.

FLOODPLAIN EASEMENT LINE TABLE with columns: LINE, BEARING, LENGTH. Includes lines F1 through F61.

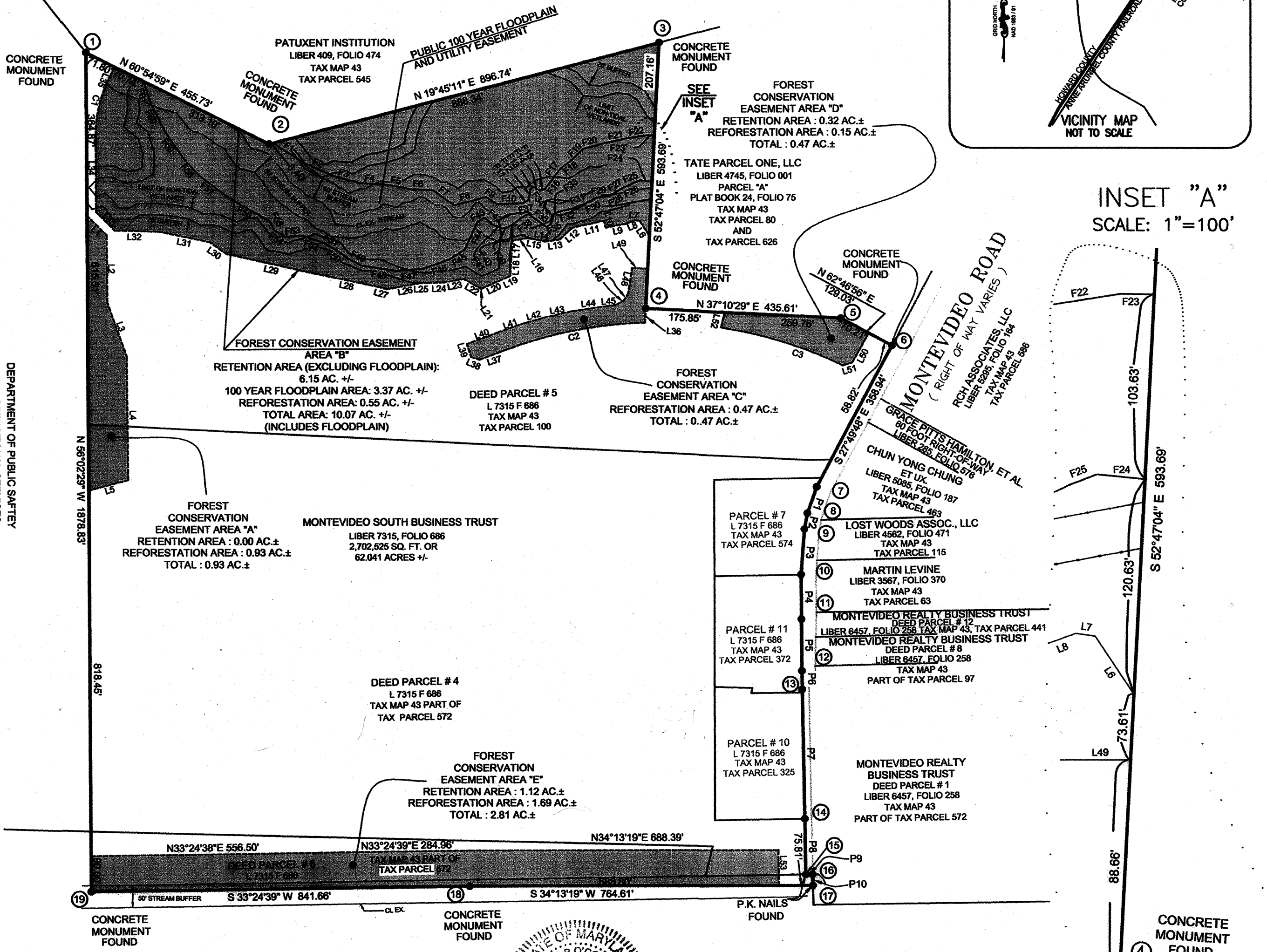
PROPERTY LINE TABLE with columns: LINE, BEARING, LENGTH. Includes lines P1 through P10.

COORDINATE TABLE with columns: POINT, NORTHING, EASTING. Includes points 1 through 19.

CURVE TABLE with columns: CURVE, RADIUS, ARC LENGTH, DELTA ANGLE, CHORD BEARING, CHORD LENGTH, TANGENT. Includes curves C1, C2, C3.



INSET "A" SCALE: 1"=100'



GENERAL NOTES

- 1) THIS PLAT IS BASED UPON FIELD RUN BOUNDARY SURVEY PERFORMED BY THE RBA GROUP ON AND BETWEEN JANUARY 08, AND JUNE 25, 2003...
2) COORDINATES AND COURSES SHOWN HEREON ARE REFERRED TO THE MARYLAND STATE PLANE COORDINATE SYSTEM...
3) THE FOREST CONSERVATION EASEMENT SHOWN ON THESE PLATS HAS BEEN ESTABLISHED TO FULFILL THE REQUIREMENTS OF SDP-04-18...
4) PROPERTY ZONED M2 PER THE COMPREHENSIVE ZONING PLAN DATED 2/2/2004.

PLAT TABULATION
TOTAL AREA OF PLAT 62.041 AC.±
FOREST CONSERVATION EASEMENT: 14.75 AC. ±
FLOODPLAIN AREA: 3.37 AC±
NET FOREST CONSERVATION EASEMENT: 11.38 AC. ±

■ DENOTES FOREST CONSERVATION EASEMENT AREA
AREA = 656,449 SQ. FT. OR 15.07 AC. ±

christopher consultants engineering · surveying · land planning
christopher consultants, ltd.
7172 columbia gateway drive (suite 100) · columbia, md. 21046-2990
410.872.8690 metro 301.881.0148 · fax 410.872.8693

APPROVED: HOWARD COUNTY DEPARTMENT OF PLANNING AND ZONING.

DIRECTOR [Signature] DATE 5/13/04

OWNER'S CERTIFICATE

MONTEVIDEO SOUTH BUSINESS TRUST OWNER OF THE PROPERTY SHOWN AND DESCRIBED HEREON, HEREBY ADOPTS THIS PLAN OF SUBDIVISION...
By: BALTIMORE LAND HOLDINGS, LLC, a Delaware limited liability company, its Trustee
By: TC Management Development, Inc., a Delaware corporation, its Administrative Member
By: Daniel S. Hudson its Executive Vice President

SURVEYOR'S CERTIFICATE

I HEREBY CERTIFY THAT THE FINAL EASEMENT SHOWN HEREON IS CORRECT; THAT IT DEFINES A FOREST CONSERVATION EASEMENT ON ALL OR PART OF THE PARCELS OF LAND DESCRIBED IN A DEED FROM THE MONTEVIDEO REALTY BUSINESS TRUST TO MONTEVIDEO SOUTH BUSINESS TRUST DATED JUNE 23, 2003...
THE REQUIREMENTS OF 3-108, THE REAL PROPERTY ARTICLE ANNOTED CODE OF MARYLAND, 1988 REPLACEMENT VOLUME (AS SUPPLEMENTED) AS FAR AS THEY RELATE TO THE MAKING OF THIS PLAT AND THE SETTING OF MARKERS HAVE BEEN COMPLIED WITH.
James P. O'Connor Prof.L.S.
03 March 04
DATE

RECORDED AS PLAT NUMBER 110082 ON 5/19/04 AMONG THE LAND RECORDS OF HOWARD COUNTY, MARYLAND

PURPOSE STATEMENT
THE PURPOSE OF THIS PLAT OF FOREST CONSERVATION EASEMENT IS TO ESTABLISH FOREST CONSERVATION EASEMENT IN THE AMOUNT OF 15.16 ACRES OF RETENTION FOR THE LAND OF MONTEVIDEO SOUTH BUSINESS TRUST

PLAT OF FOREST CONSERVATION EASEMENT
LAND OF MONTEVIDEO SOUTH BUSINESS TRUST
TAX MAP 43 PARCELS 100, 325, 372, 572 AND 574
1ST ELECTION DISTRICT SHEET 1 OF 1 HOWARD COUNTY, MARYLAND

SCALE 1" = 200 DATE: 03/04/03 DRAWN BY: SP CHECKED BY: JO'C