

TABULATION CHART FOR FOREST CONSERVATION EASEMENT AREA THIS SHEET

AREA	SQ. FEET	ACRES
D	105,266	2.417
E	69,999	1.607
F	16,422	0.377
H*	13,870	0.318
I*	3,047	0.070
TOTAL	208,604	4.789

TABULATION CHART FOR FOREST CONSERVATION EASEMENT AREA THIS SUBMISSION

AREA	SQ. FEET	ACRES
A	77,426	1.777
B	106,753	2.451
C	484,270	11.117
D	105,266	2.417
E	69,999	1.607
F	16,422	0.377
H*	13,870	0.318
I*	3,047	0.070
J	108,460	2.490
TOTAL	985,513	22.624

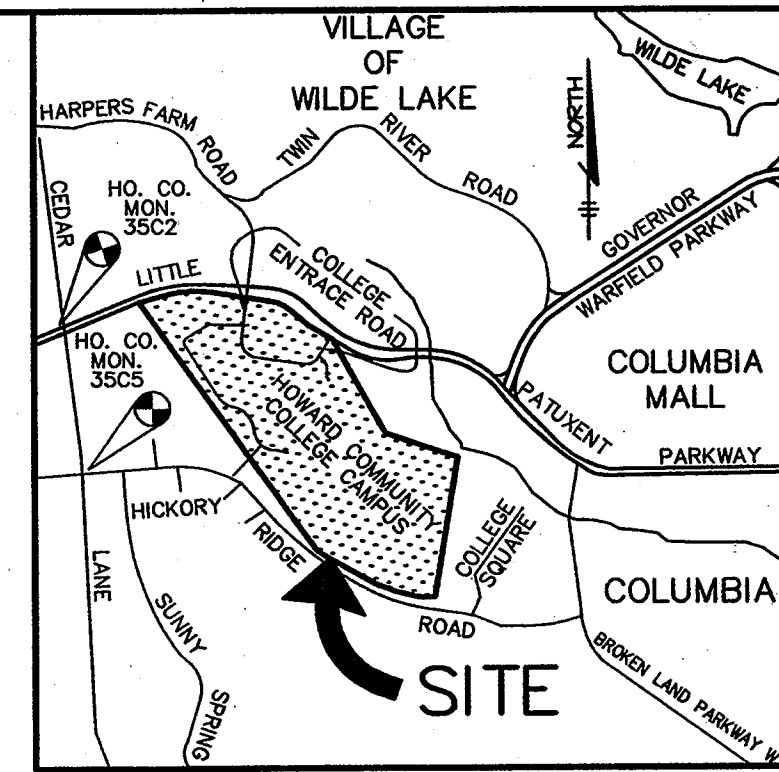
CURVE DATA

CURVE	RADIUS	LENGTH	TANGENT	BEARING	CHORD	DELTA
2-3	2251.83'	765.14'	386.29'	N 85°05'09" E	761.47'	19°28'06"
4-5	1016.27'	598.53'	308.23'	S 68°18'20" E	589.92'	33°44'40"
6-7	1242.37'	269.86'	135.46'	S 57°39'22" E	269.33'	12°26'44"

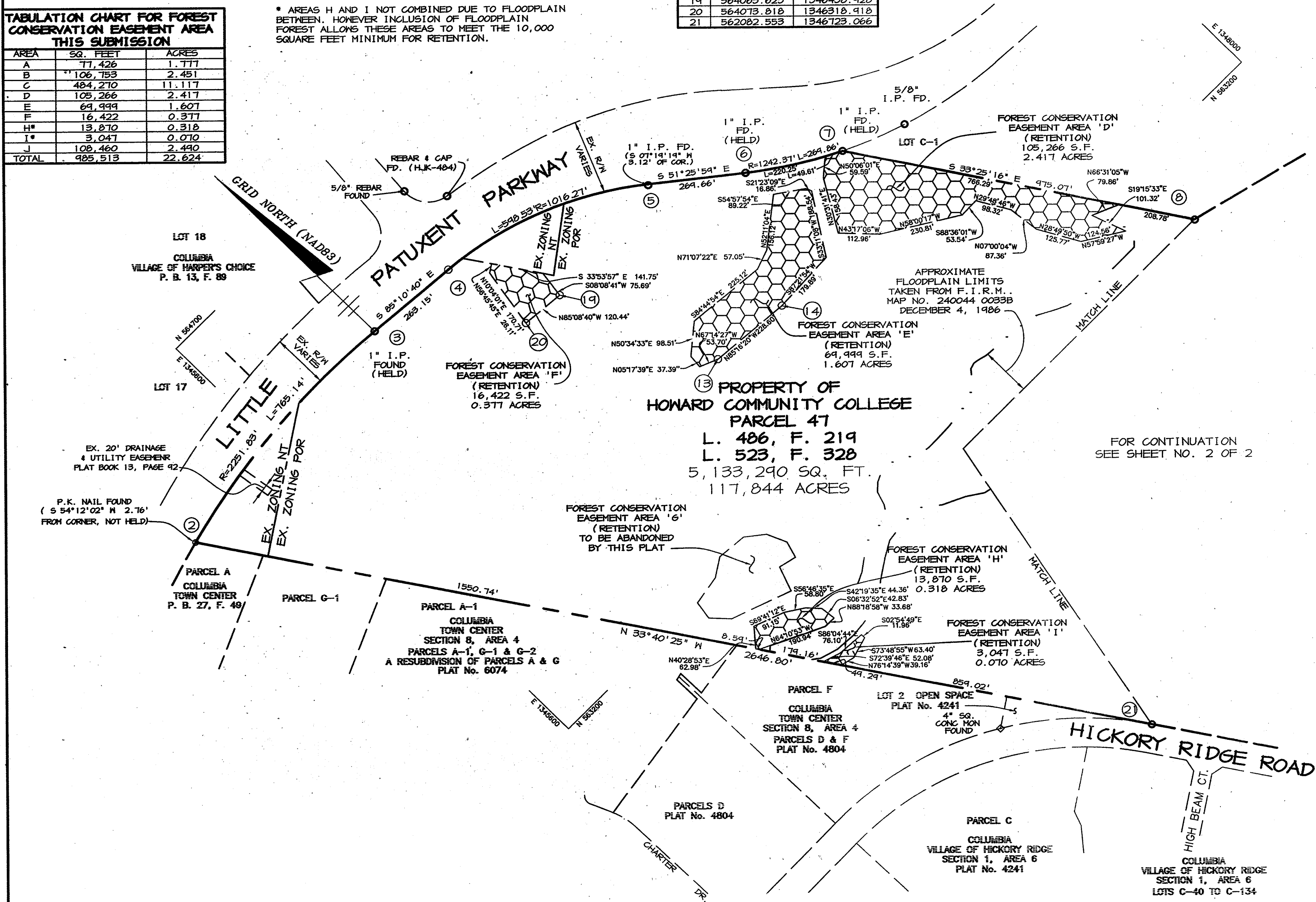
COORDINATE LIST

No.	NORTH	EAST
2	564285.252	1345255.519
3	564350.482	1346014.186
4	564328.360	1346276.408
5	564110.292	1346824.544
6	563942.177	1347085.388
7	563798.085	1347262.932
13	563640.935	1346563.252
14	563616.849	1346867.611
19	564063.623	1346438.928
20	564073.818	1346318.918
21	562082.553	1346723.066

NOTE:
* AREAS H AND I NOT COMBINED DUE TO FLOODPLAIN BETWEEN. HOWEVER INCLUSION OF FLOODPLAIN FOREST ALLOWS THESE AREAS TO MEET THE 10,000 SQUARE FEET MINIMUM FOR RETENTION.



VICINITY MAP
SCALE: 1" = 2000'



GENERAL NOTES:

- SUBJECT PROPERTY ZONED FOR AND NT PER THE 10/18/93 COMPREHENSIVE ZONING PLAN.
- COORDINATES BASE ON NAD '83 MARYLAND COORDINATES SYSTEM AS PROJECTED BY HOWARD COUNTY GEODETIC CONTROL STATIONS NO. 35C2 & 35C5.
- THIS PLAT IS BASED ON A FIELD RUN MONUMENTED BOUNDARY SURVEY PERFORMED ON OR ABOUT DECEMBER 2000 BY RIEMER MUEGGE, A DIVISION OF PATTON HARRIS RUST & ASSOCIATES, PC.
- DENOTES AN IRON PIPE FOUND AND AN REBAR & CAP FOUND
● DENOTES AN P.K. NAIL FOUND
- FOREST CONSERVATION EASEMENTS 'A' THRU 'I' HAVE BEEN ESTABLISHED TO FULFILL THE REQUIREMENTS FOR SDP-01-58, WITH RESPECT TO SECTION 16.200 OF THE HOWARD COUNTY FOREST CONSERVATION ACT. NO CLEARING, GRADING, OR CONSTRUCTION IS PERMITTED WITHIN THE FOREST CONSERVATION EASEMENT; HOWEVER, FOREST MANAGEMENT PRACTICES, AS DEFINED IN THE DEED OF FOREST CONSERVATION EASEMENT, ARE ALLOWED.
- NO SURETY IS REQUIRED SINCE THIS IS A GOVERNMENT USE. FOREST CONSERVATION OBLIGATIONS FOR ENTIRE CAMPUS, IN ACCORDANCE WITH SECTION 16.202 OF THE HOWARD COUNTY CODE AND FOREST CONSERVATION MANUAL, HAVE BEEN MET BY THE PLACEMENT OF 23.53 ACRES OF FOREST RETENTION EASEMENTS AND PAYMENT OF FEE-IN-LIEU FOR 0.07 ACRES OF REFORESTATION OBLIGATION IN THE AMOUNT OF \$1524.60 UNDER SDP-01-58. THIS PLAN WILL ABANDON FOREST CONSERVATION EASEMENT 'G' (0.904 AC. OF RETENTION) BY PAYING AN ABANDONMENT FEE OF \$19,689.00 (\$0.50 PER SQUARE FOOT).

PURPOSE STATEMENT
THE PURPOSE OF THIS PLAT IS TO ABANDON FOREST CONSERVATION EASEMENT AREA "G".

Patton Harris Rust & Associates, pc
ENGINEERING • ENVIRONMENTAL SERVICES • PLANNING • SURVEYING
8818 Centre Park Drive, Columbia, MD 21046
tel 410.997.8800 fax 410.997.9282

RECORDED AS PLAT NUMBER 16125
Aug. 15, 2003 AMONG THE
LAND RECORDS OF HOWARD COUNTY, MARYLAND.

THE REQUIREMENTS OF SECTION 3-108, THE REAL PROPERTY ARTICLE, ANNOTATED CODE OF MARYLAND, 1988 REPLACEMENT VOLUME (AS SUPPLEMENTED) AS FAR AS THEY RELATE TO THE MAKING OF THIS PLAT AND THE SETTING OF MARKERS HAVE BEEN COMPLIED WITH.

Thomas L. Frazier, Jr. 7/25/03
THOMAS L. FRAZIER, JR.
PROFESSIONAL LAND SURVEYOR #21047
DATE

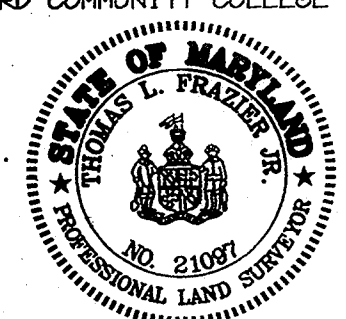
James O. Lash 8-5-03
BOARD OF HOWARD COMMUNITY COLLEGE
BY JAMES O. LASH, EXECUTIVE DIRECTOR
OF FACILITIES/CAPITAL PROJECTS
DATE

APPROVED: HOWARD COUNTY DEPARTMENT OF PLANNING AND ZONING.
Mark A. Leight 8/12/03
DIRECTOR DATE

SURVEYOR'S CERTIFICATE

I HEREBY CERTIFY THAT THE FINAL EASEMENT SHOWN HEREON IS CORRECT; THAT IT DEFINES A FOREST CONSERVATION EASEMENT ON PART OF THE LANDS CONVEYED BY THE HOWARD RESEARCH AND DEVELOPMENT CORPORATION TO BOARD OF HOWARD COMMUNITY COLLEGE BY DEED DATED APRIL 18, 1968 AND RECORDED AMONG THE LAND RECORDS OF HOWARD COUNTY, MARYLAND IN LIBER 486 AT FOLIO 219 AND INQUISTION MADE BY THE BOARD OF TRUSTEES OF HOWARD COMMUNITY COLLEGE VS. SAMUEL AUGUSTUS COOK, ET AL, BY THE DEED DATED OCTOBER 8, 1969 AND RECORDED AMONG THE LAND RECORDS OF HOWARD COUNTY, MARYLAND IN LIBER 523 AT FOLIO 329.

Thomas L. Frazier, Jr. 7/25/03
THOMAS L. FRAZIER, JR.
PROFESSIONAL LAND SURVEYOR
MD REGISTRATION No. 21047
DATE



OWNER'S CERTIFICATE

BOARD OF HOWARD COMMUNITY COLLEGE, BY JAMES O. LASH, EXECUTIVE DIRECTOR OF FACILITIES/CAPITAL PROJECTS OWNER OF THE PROPERTY SHOWN AND DESCRIBED HEREON, HEREBY ADOPT THIS PLAT; AND IN CONSIDERATION OF THE APPROVAL OF THIS PLAT OF FOREST CONSERVATION EASEMENT SHOWN HEREON.

WITNESS MY HAND THIS 5th DAY OF August 2003.

James O. Lash
BOARD OF HOWARD COMMUNITY COLLEGE
JAMES O. LASH, EXECUTIVE DIRECTOR
OF FACILITIES/CAPITAL PROJECTS

Chris J. Row
WITNESS

PLAT FOR FOREST CONSERVATION EASEMENT PROPERTY OF HOWARD COMMUNITY COLLEGE

SDP-01-58
5TH ELECTION DISTRICT HOWARD COUNTY, MARYLAND
TAX MAP No. 35 PARCEL 47 ZONED: POR & NT
GRID No. 6 & 12
SCALE: 1" = 200' DATE: 07-25-03 SHEET 1 OF 2
00161\FCPLAT3-REV.DWG

TABULATION CHART FOR FOREST CONSERVATION EASEMENT AREA THIS SHEET

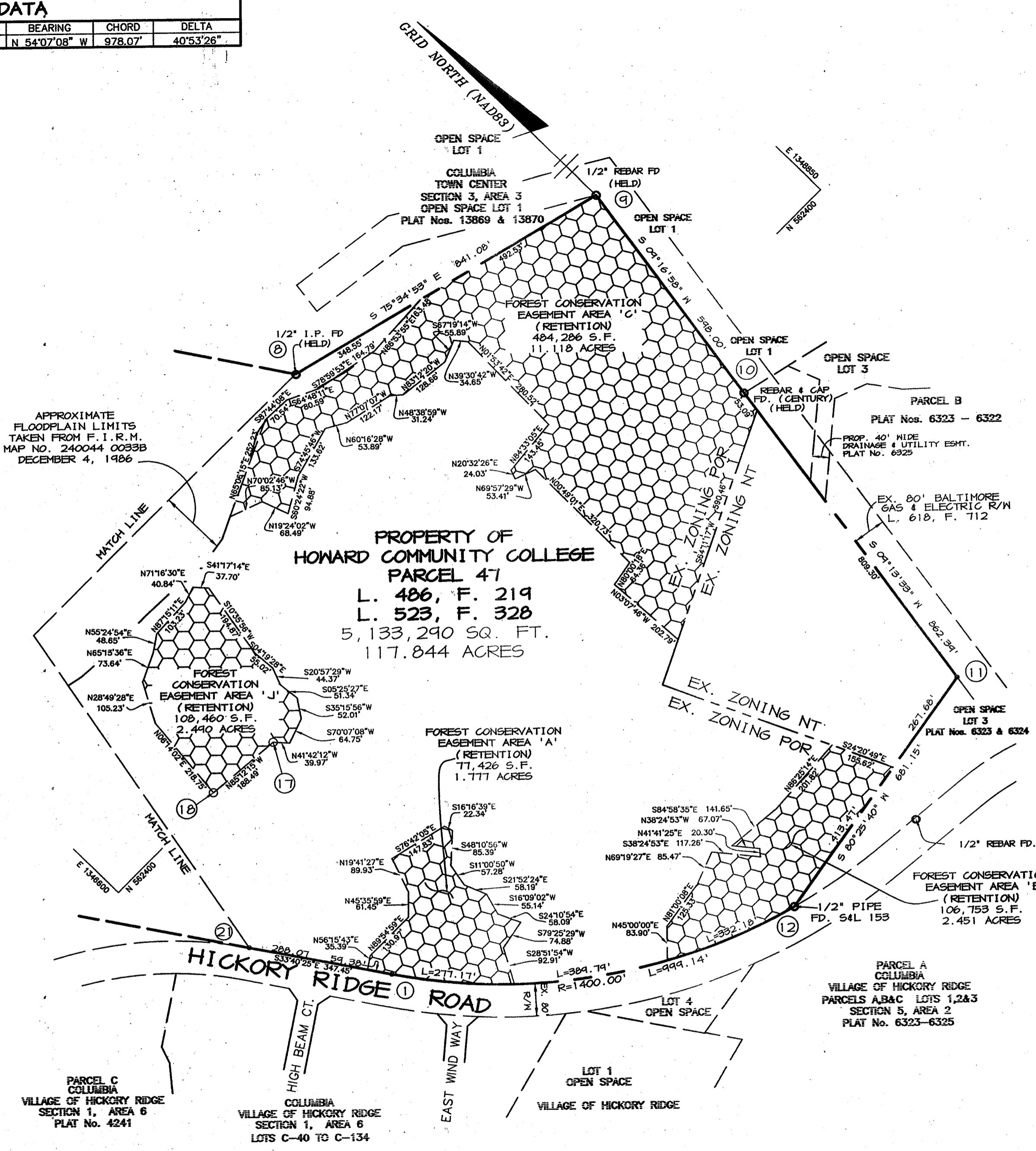
AREA	SQ. FEET	ACRES
A	77,426	1.777
B	106,753	2.451
C	404,210	11.117
J	108,460	2.440
TOTALS	716,909	17.835

CURVE DATA

CURVE	RADIUS	LENGTH	TANGENT	BEARING	CHORD	DELTA
12-1	1400.00'	999.14'	521.91'	N 54°07'08" W	978.07'	40°53'26"

COORDINATE DATA

No.	NORTH	EAST
1	561793.344	1346445.714
8	562404.240	1347799.980
9	562774.014	1348614.577
10	562104.641	1348518.113
11	561333.411	1348374.044
12	561220.143	1347700.183
17	562392.348	1347120.614
18	562400.157	1346932.783



FOR CONTINUATION SEE SHEET NO. 1 OF 2

THE REQUIREMENTS OF SECTION 3-100, THE REAL PROPERTY ARTICLE, ANNOTATED CODE OF MARYLAND, 1980 REPLACEMENT VOLUME (AS SUPPLEMENTED) AS FAR AS THEY RELATE TO THE MAKING OF THIS PLAT AND THE SETTING OF MARKERS HAVE BEEN COMPLIED WITH.

Thomas L. Frazier, Jr.
 THOMAS L. FRAZIER, JR.
 PROFESSIONAL LAND SURVEYOR #21097
 DATE: 7/25/03

BY: *James O. Lash*
 JAMES O. LASH, EXECUTIVE DIRECTOR
 OF FACILITIES/CAPITAL PROJECTS
 DATE: 8.5.03

APPROVED: *David M. Layton*
 DIRECTOR
 DATE: 8/12/03

SURVEYOR'S CERTIFICATE

I HEREBY CERTIFY THAT THE FINAL EASEMENT SHOWN HEREON IS CORRECT; THAT IT DEFINES A FOREST CONSERVATION EASEMENT ON PART OF THE LANDS CONVEYED BY THE HOWARD RESEARCH AND DEVELOPMENT CORPORATION TO BOARD OF HOWARD COMMUNITY COLLEGE BY DEED DATED APRIL 18, 1968 AND RECORDED AMONG THE LAND RECORDS OF HOWARD COUNTY, MARYLAND IN LIBER 486 AT FOLIO 219 AND INQUISITION MADE BY THE BOARD OF TRUSTEES OF HOWARD COMMUNITY COLLEGE VS. SAMUEL AUGUSTUS COOK, ET AL., BY THE DEED DATED OCTOBER 8, 1969 AND RECORDED AMONG THE LAND RECORDS OF HOWARD COUNTY, MARYLAND IN LIBER 523 AT FOLIO 329.

Thomas L. Frazier, Jr.
 THOMAS L. FRAZIER, JR.
 PROFESSIONAL LAND SURVEYOR
 MD REGISTRATION NO. 21097
 DATE: 7/25/03



OWNER'S CERTIFICATE

BOARD OF HOWARD COMMUNITY COLLEGE, BY JAMES O. LASH, EXECUTIVE DIRECTOR OF FACILITIES/CAPITAL PROJECTS OWNER OF THE PROPERTY SHOWN AND DESCRIBED HEREON, HEREBY ADOPT THIS PLAT; AND IN CONSIDERATION OF THE APPROVAL OF THIS PLAT OF FOREST CONSERVATION EASEMENT SHOWN HEREON.

WITNESS MY HAND THIS 5th DAY OF August 2003.

James O. Lash
 JAMES O. LASH, EXECUTIVE DIRECTOR
 OF FACILITIES/CAPITAL PROJECTS

Christopher P. ...
 WITNESS

Patton Harris Rust & Associates, pc
 ENGINEERING • ENVIRONMENTAL SERVICES • PLANNING • SURVEYING
 8818 Centre Park Drive, Columbia, MD 21045
 tel 410.997.8900 fax 410.997.9282

RECORDED AS PLAT NUMBER 16126
 AUG. 15, 2003 AMONG THE
 LAND RECORDS OF HOWARD COUNTY, MARYLAND.

PLAT FOR FOREST CONSERVATION EASEMENT PROPERTY OF HOWARD COMMUNITY COLLEGE

SDP-01-58
 5TH ELECTION DISTRICT HOWARD COUNTY, MARYLAND
 TAX MAP No. 35 PARCEL 47 ZONED: POR & NT
 GRID No. 6 & 12
 SCALE: 1" = 200' DATE: 07-25-03 SHEET 2 OF 2
 00161NCPPLAT4-REV.DWG