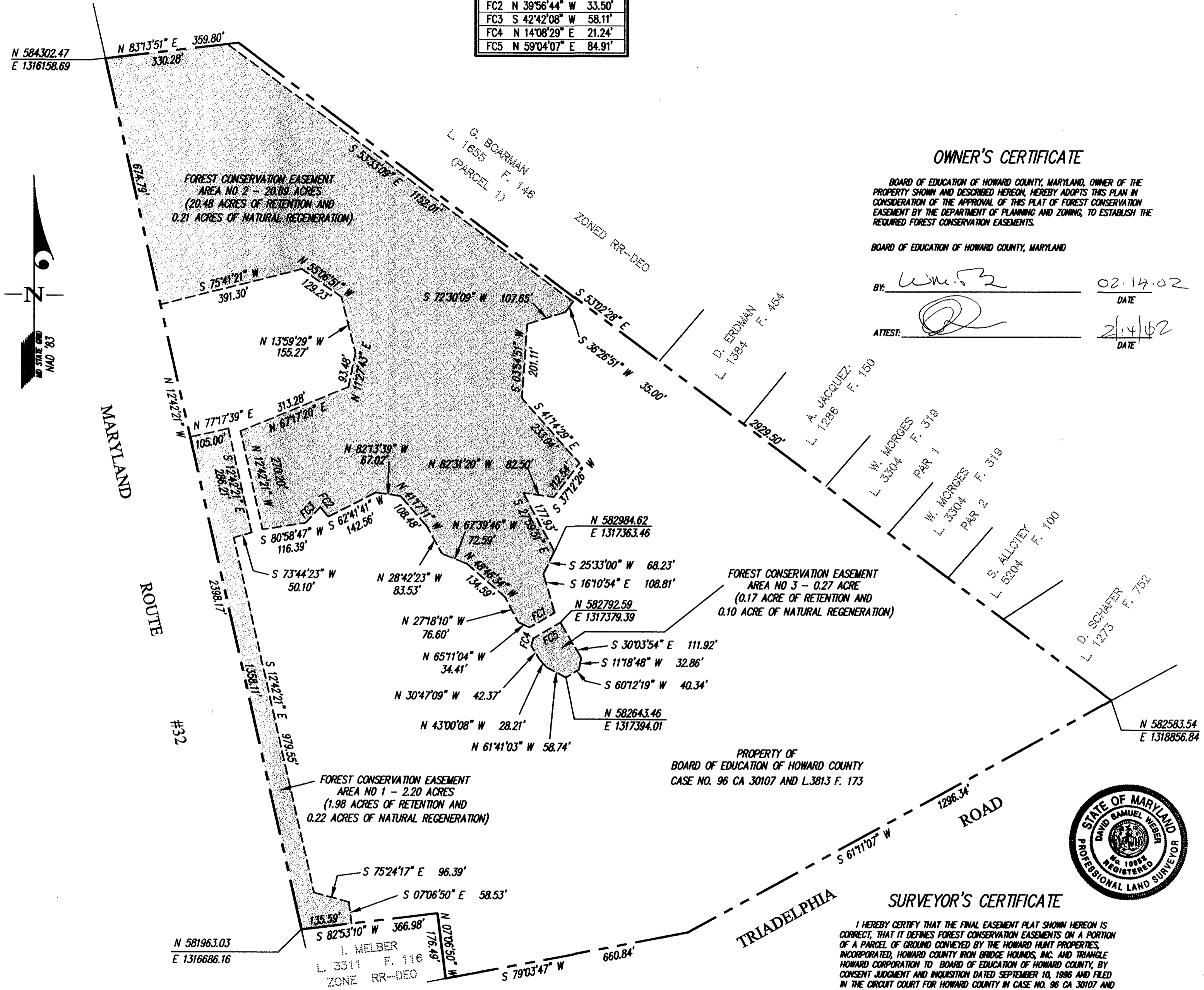


LINE	BEARING	DIST.
FC1	S 59°04'07" W	78.46'
FC2	N 39°56'44" W	33.50'
FC3	S 42°42'08" W	58.11'
FC4	N 14°08'29" E	21.24'
FC5	N 59°04'07" E	84.91'



**OWNER'S CERTIFICATE**

BOARD OF EDUCATION OF HOWARD COUNTY, MARYLAND, OWNER OF THE PROPERTY SHOWN AND DESCRIBED HEREON, HEREBY ADOPTS THIS PLAN IN CONSIDERATION OF THE APPROVAL OF THIS PLAT OF FOREST CONSERVATION EASEMENT BY THE DEPARTMENT OF PLANNING AND ZONING, TO ESTABLISH THE REQUIRED FOREST CONSERVATION EASEMENTS.

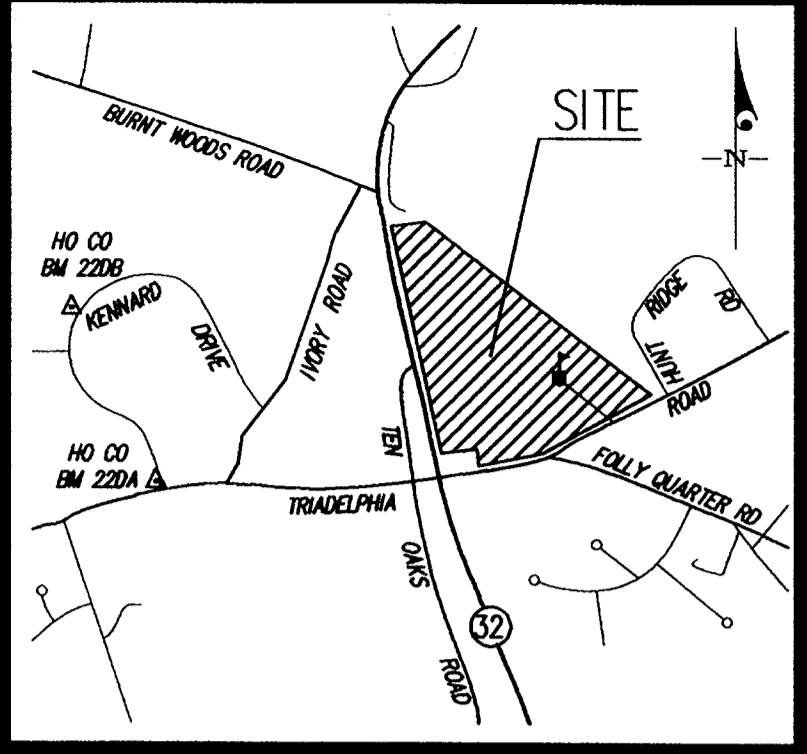
BOARD OF EDUCATION OF HOWARD COUNTY, MARYLAND

BY: Wm. F. Z 02.14.02  
DATE

ATTEST: [Signature] 2/14/02  
DATE

**NOTES:**

1. THE FOREST CONSERVATION EASEMENTS SHOWN ON THIS PLAT HAVE BEEN ESTABLISHED TO FULFILL THE REQUIREMENTS OF THE WESTERN MIDDLE SCHOOL NO. 3 (SDP-01-122) IN ACCORDANCE WITH SECTION 16.1200 OF THE HOWARD COUNTY FOREST CONSERVATION ACT. NO CLEARING, GRADING OR CONSTRUCTION IS PERMITTED WITHIN THE FOREST CONSERVATION EASEMENTS, HOWEVER, FOREST MANAGEMENT PRACTICES AS DEFINED IN THE DEED OF FOREST CONSERVATION EASEMENT ARE ALLOWED.
2. THE PURPOSE OF THIS PLAT OF FOREST CONSERVATION EASEMENT IS TO ESTABLISH FOREST CONSERVATION EASEMENTS IN THE AMOUNT OF 23.16 ACRES TO FULFILL THE FOREST CONSERVATION OBLIGATION FOR THE WESTERN MIDDLE SCHOOL NO. 3 (SDP-01-122) IN THE AMOUNT OF 22.63 ACRES OF RETENTION AND 0.53 ACRES OF NATURAL REGENERATION.
3. THE SUBJECT PROPERTY IS ZONED RR-DEO, PER THE 10/18/93 COMPREHENSIVE ZONING PLAN.
4. COORDINATES BASED ON NAD '83 MARYLAND COORDINATE SYSTEM AS PROJECTED BY HOWARD COUNTY GEODETIC CONTROL STATIONS NO. 22DA AND NO. 22DB.



VICINITY MAP  
SCALE 1"=2,000'

**SURVEYOR'S CERTIFICATE**

I HEREBY CERTIFY THAT THE FINAL EASEMENT PLAT SHOWN HEREON IS CORRECT, THAT IT DEFINES FOREST CONSERVATION EASEMENTS ON A PORTION OF A PARCEL OF GROUND CONVEYED BY THE HOWARD HUNT PROPERTIES, INCORPORATED, HOWARD COUNTY IRON BRIDGE HOUNDS, INC. AND TRIANGLE HOWARD CORPORATION TO BOARD OF EDUCATION OF HOWARD COUNTY, BY CONSENT JUDGMENT AND INQUIRY DATED SEPTEMBER 10, 1996 AND FILED IN THE CIRCUIT COURT FOR HOWARD COUNTY IN CASE NO. 96 CA 30107 AND RECORDED IN THE LAND RECORDS OF HOWARD COUNTY, MARYLAND IN LIBER 3813 AT FOLIO 173.

APPROVED: HOWARD COUNTY DEPARTMENT OF PLANNING AND ZONING

[Signature] 2/21/02  
DIRECTOR DATE

David S. Weber 2/15/2002  
DAVID S. WEBER  
PROFESSIONAL LAND SURVEYOR  
MARYLAND REGISTRATION No. 10852

RECORDED AS PLAT 15258 ON 2/25 2002  
AMONG THE LAND RECORDS OF HOWARD COUNTY, MARYLAND



WESTERN MIDDLE SCHOOL NO. 3 - SDP-01-122  
PLAT FOR GRANT OF FOREST  
CONSERVATION EASEMENTS  
TO HOWARD COUNTY, MARYLAND

BOARD OF EDUCATION OF HOWARD COUNTY, MARYLAND  
L.3818 F.173

TAX MAP 22 PART OF PARCEL 6  
3rd ELECTION DISTRICT  
SCALE 1"=200'  
HOWARD COUNTY, MARYLAND  
FEBRUARY, 2002

**GLW GUTSCHICK LITTLE & WEBER, P.A.**  
CIVIL ENGINEERS, LAND SURVEYORS, LAND PLANNERS, LANDSCAPE ARCHITECTS  
3909 NATIONAL DRIVE - SUITE 250 - BURTONSVILLE OFFICE PARK  
BURTONSVILLE, MARYLAND 20866  
TEL: 301-421-4024 BAL: 410-880-1820 DC/VA: 301-989-2524 FAX: 301-421-4186

SDP-01-122 (F)