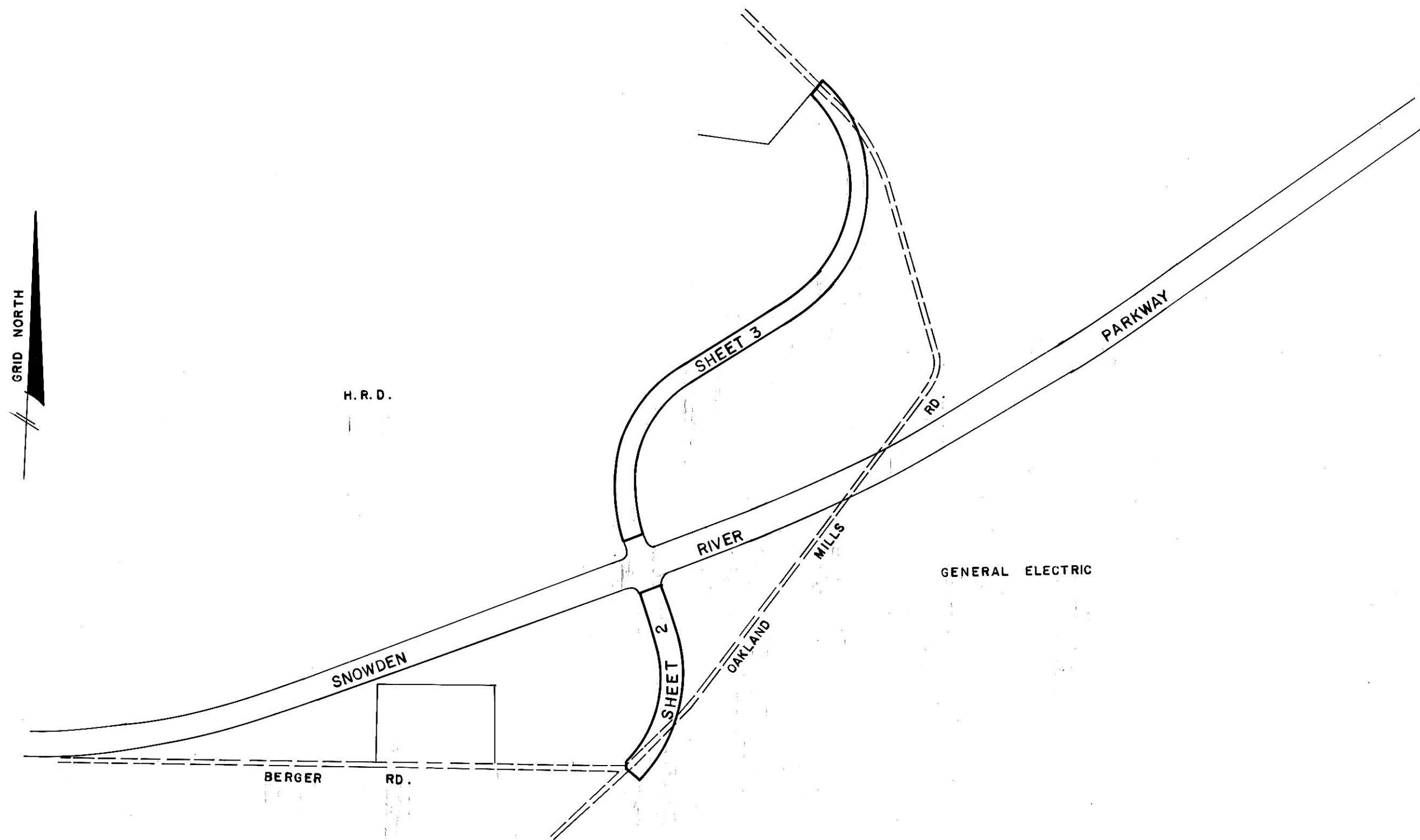


VICINITY MAP  
SCALE 2" = 1 mi.



E.G.U. SUBDIVISION

SECTION I AREA 4

PETITIONER AND OWNER

THE HOWARD RESEARCH AND DEVELOPMENT CORPORATION  
AND GENERAL ELECTRIC COMPANY  
COLUMBIA, MARYLAND 21043

**COLUMBIA**

FINAL DEVELOPMENT PLAN PHASE NINETY-THREE  
6<sup>TH</sup> ELECTION DISTRICT HOWARD COUNTY, MD.

SCALE 1" = 400' MARCH, 1970 SHEET 1 OF 3

PREPARED AS TO SHEETS 1 TO 3  
IN ACCORDANCE WITH THE ZONING REGULATIONS  
OF HOWARD COUNTY  
ADOPTED MAY 16, 1961 AND AS  
AMENDED MAY 27, 1965

*Bernard J. Palmer*  
LAND SURVEYOR'S SIGNATURE

BOARD OF COUNTY COMM. B. C. C. CASE 412  
RESOLUTION APPROVED AUGUST 10, 1965

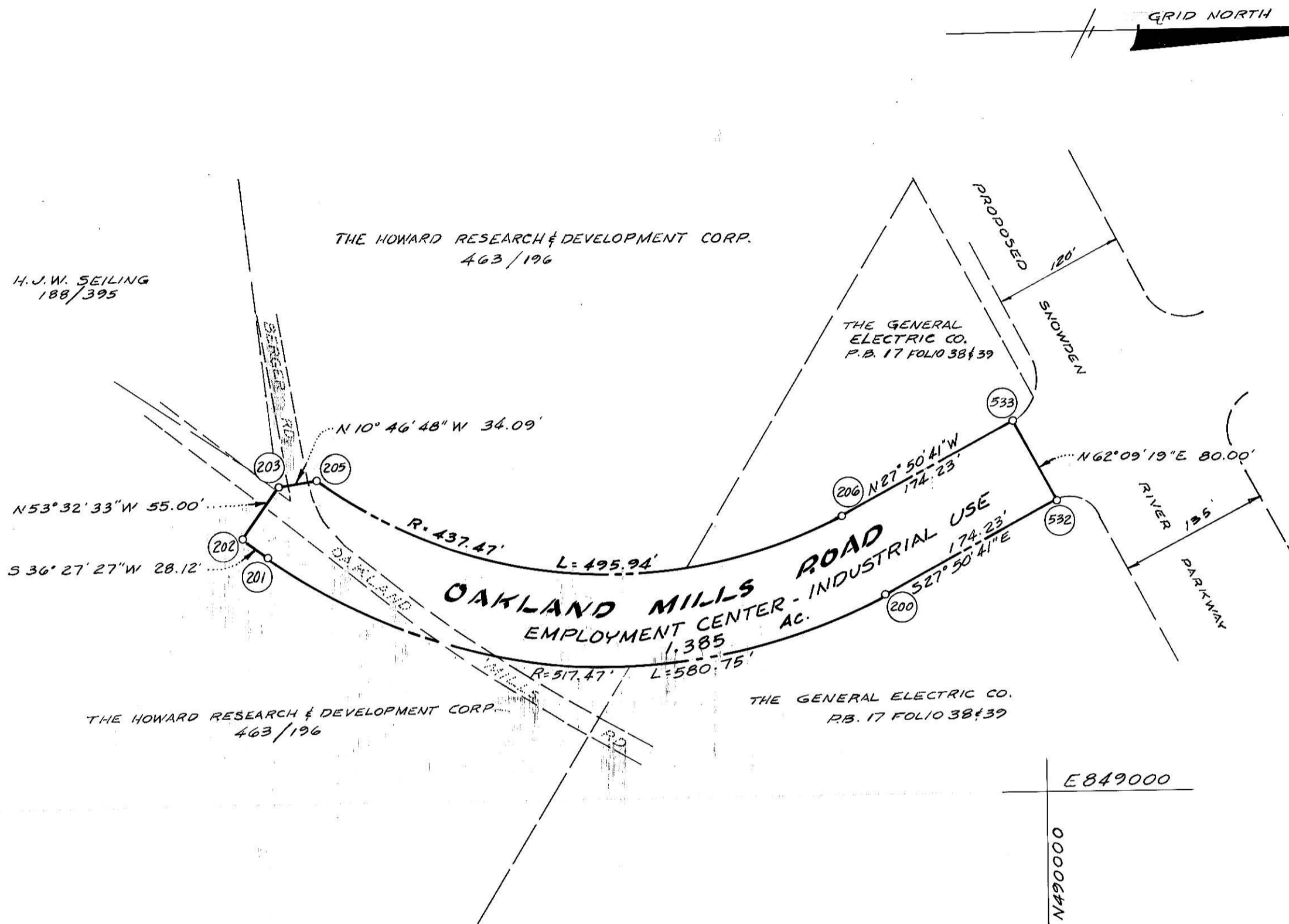
HOWARD COUNTY PLANNING BOARD

*Thomas A. Hammett* 4-29-70  
H.C.P.B. EXECUTIVE SEC. DATE H.C.P.B. CHAIRMAN DATE  
*E. M. ...* 6-24-70

RECORDED PLAT BOOK 19 FOLIO 145  
ON July 21, 1970 AMOUNT TO BE RECORDED IN  
HOWARD COUNTY, MD.

**COORDINATES**

NO.	NORTH	EAST
533	489 977.50	848 668.12
532	490 014.87	848 738.85
200	489 860.81	848 820.24
201	489 311.62	848 778.89
202	489 289.01	848 762.18
203	489 321.69	848 717.95
205	489 355.17	848 711.56
206	489 823.45	848 749.50



**FINAL DEVELOPMENT PLAN CRITERIA**

The area included in this Final Development Plan Phase is Applicable to Section I, Area 4, of E.G.U.

All of the land within this Final Development Plan Phase shall be used as the right-of-way for a portion of Oakland Mills Road and may be used for roadway and utility easement purposes. For the purpose of land use allocations under the provisions of Section 17.018 of the Howard County Zoning Regulations, such land shall be classified as Employment Center Industrial use, as indicated on the maps contained in this Final Development Plan Phase.

**TABULATION OF LAND USE IN ACRES**

Land Use	Acres
Employment Center	
Industrial	
Roadway	5.350
<b>TOTAL</b>	<b>5.350</b>

**E.G.U. SUBDIVISION  
SECTION I AREA 4**

PETITIONER AND OWNER  
THE HOWARD RESEARCH AND DEVELOPMENT CORPORATION  
AND GENERAL ELECTRIC COMPANY  
COLUMBIA, MARYLAND 21043

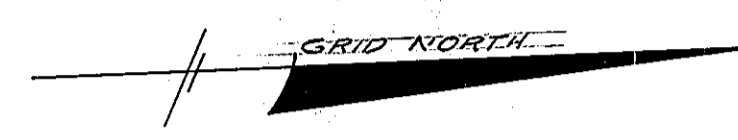
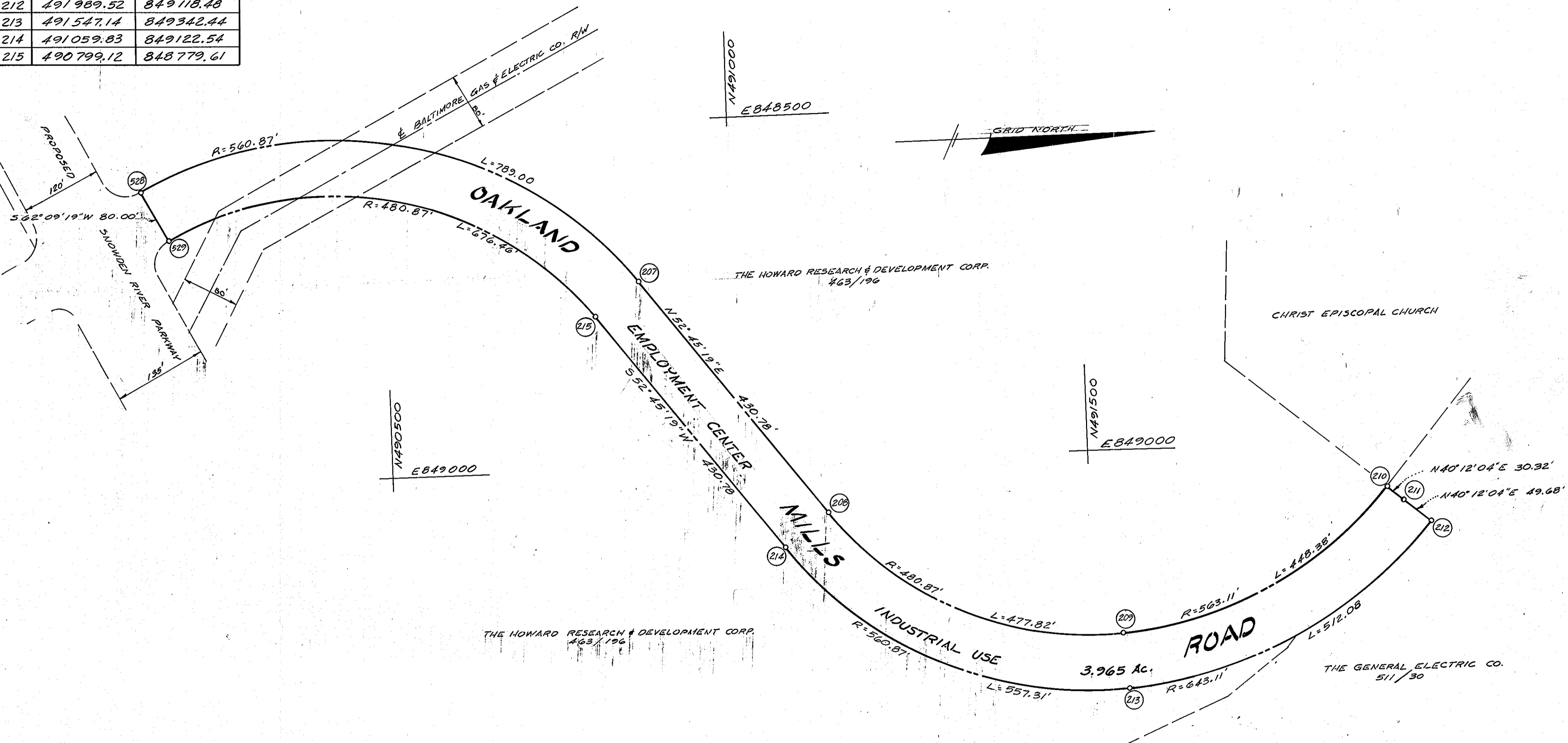
**COLUMBIA**

FINAL DEVELOPMENT PLAN PHASE NINETY-THREE  
6<sup>TH</sup> ELECTION DISTRICT HOWARD COUNTY, MD.  
SCALE 1"=100' MARCH, 1970 SHEET 2 OF 3

RECORDED... PLAY BOOK 19 FOLIO 146  
ON July 21 1970... HOWARD COUNTY, MD.

**COORDINATES**

NO.	NORTH	EAST
528	490154.35	848574.71
529	490191.71	848645.45
207	490862.80	848731.19
208	491123.52	849074.12
209	491541.32	849262.65
210	491928.42	849066.84
211	491951.58	849086.42
212	491989.52	849118.48
213	491547.14	849342.44
214	491059.83	849122.54
215	490799.12	848779.61



**E.G.U. SUBDIVISION  
SECTION I AREA 4**

PETITIONER AND OWNER  
THE HOWARD RESEARCH AND DEVELOPMENT CORPORATION  
AND GENERAL ELECTRIC COMPANY  
COLUMBIA, MARYLAND 21043

**COLUMBIA**

FINAL DEVELOPMENT PLAN PHASE NINETY-THREE  
6<sup>TH</sup> ELECTION DISTRICT HOWARD COUNTY, MD.  
SCALE 1" = 100' MARCH, 1970 SHEET 3 OF 3

RECORDED PLAT BOOK 19 FOLIO 142  
ON July 21, 1970  
HOWARD COUNTY, MD.