

VICINITY MAP  
SCALE: 1"=2000'

VILLAGE OF HARPER'S CHOICE  
 HARPER'S FARM ROAD  
 PETITIONER AND OWNER  
 THE HOWARD RESEARCH AND DEVELOPMENT CORPORATION  
 THE VILLAGE OF CROSS KEYS  
 BALTIMORE, MARYLAND 21210

**COLUMBIA**

FINAL DEVELOPMENT PLAN PHASE SEVENTY-EIGHT  
 5<sup>TH</sup> ELECTION DISTRICT HOWARD COUNTY, MD.  
 SCALE 1"=400' JULY, 1969 SHEET 1 OF 2

PREPARED AS TO SHEETS 1 TO 2  
 IN ACCORDANCE WITH THE ZONING REGULATIONS  
 OF HOWARD COUNTY  
 ADOPTED MAY 16, 1961 AND AS  
 AMENDED MAY 27, 1965

*Bernard Rodgers*  
 LAND SURVEYOR'S SIGNATURE



BOARD OF COUNTY COMM. B. C. C. CASE 412  
 RESOLUTION APPROVED AUGUST 10, 1965

HOWARD COUNTY PLANNING BOARD

*Thomas J. Harris* 9-5-69 *E. Mann* 9-10-69  
 H. C. P. B. EXECUTIVE SEC. DATE H. C. P. B. CHAIRMAN DATE

RECORDED IN PLAT BOOK 16 FOLIO 144  
 ON Sept. 15 1969 AMONG THE LAND RECORDS OF  
 HOWARD COUNTY, MD.

COORDINATES

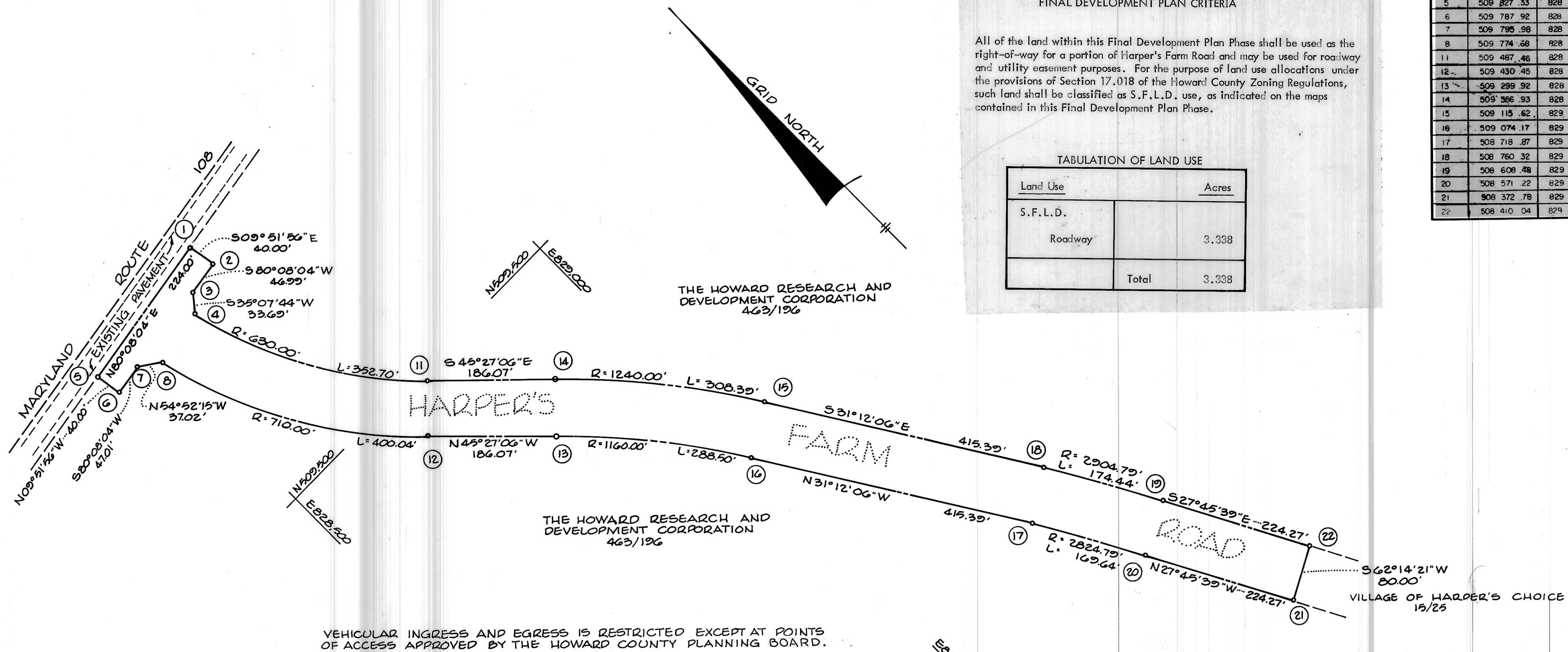
No.	NORTH	EAST
1	509 865 .71	828 640 .43
2	509 826 .30	828 647 .28
3	509 818 .25	828 600 .99
4	509 790 .70	828 581 .60
5	509 827 .33	828 419 .74
6	509 787 .92	828 426 .60
7	509 795 .98	828 472 .91
8	509 774 .68	828 503 .19
11	509 487 .46	828 752 .56
12	509 430 .45	828 696 .44
13	509 299 .92	828 829 .05
14	509 566 .93	828 885 .17
15	509 115 .62	829 075 .93
16	509 074 .17	829 007 .50
17	508 718 .87	829 222 .70
18	508 760 .32	829 291 .12
19	508 608 .48	829 376 .96
20	508 571 .22	829 306 .17
21	508 372 .78	829 410 .62
22	508 410 .04	829 481 .41

FINAL DEVELOPMENT PLAN CRITERIA

All of the land within this Final Development Plan Phase shall be used as the right-of-way for a portion of Harper's Farm Road and may be used for roadway and utility easement purposes. For the purpose of land use allocations under the provisions of Section 17.018 of the Howard County Zoning Regulations, such land shall be classified as S.F.L.D. use, as indicated on the maps contained in this Final Development Plan Phase.

TABULATION OF LAND USE

Land Use	Acres
S.F.L.D.	
Roadway	3.338
Total	3.338



VILLAGE OF HARPER'S CHOICE  
 HARPER'S FARM ROAD  
 PETITIONER AND OWNER  
 THE HOWARD RESEARCH AND DEVELOPMENT CORPORATION  
 THE VILLAGE OF CROSS KEYS  
 BALTIMORE, MARYLAND 21210

**COLUMBIA**

FINAL DEVELOPMENT PLAN PHASE SEVENTY-EIGHT  
 5<sup>TH</sup> ELECTION DISTRICT HOWARD COUNTY, MD.  
 SCALE 1"=100' JULY, 1969 SHEET 2 OF 2

RECORDED IN PLAY BOOK 16 FOLIO 149  
 ON Sept 15 1969 AMONG THE LAND RECORDS OF  
 HOWARD COUNTY, MD.