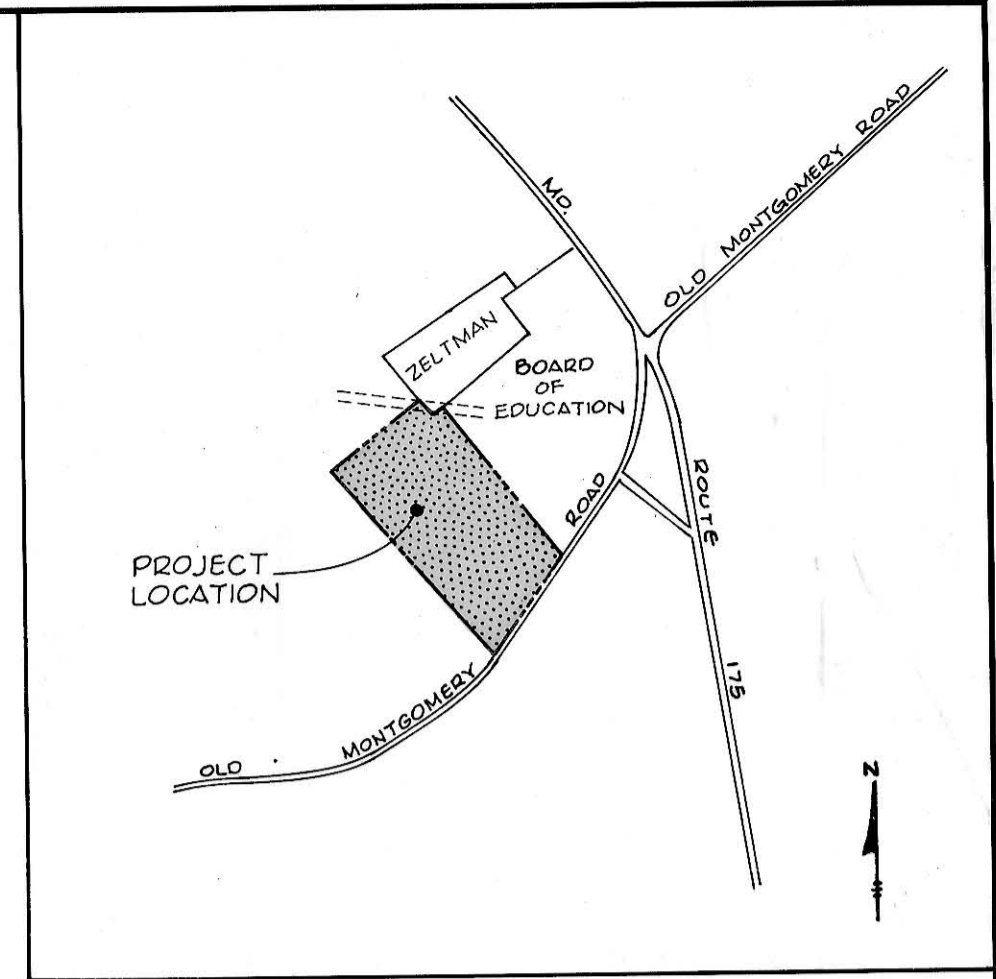
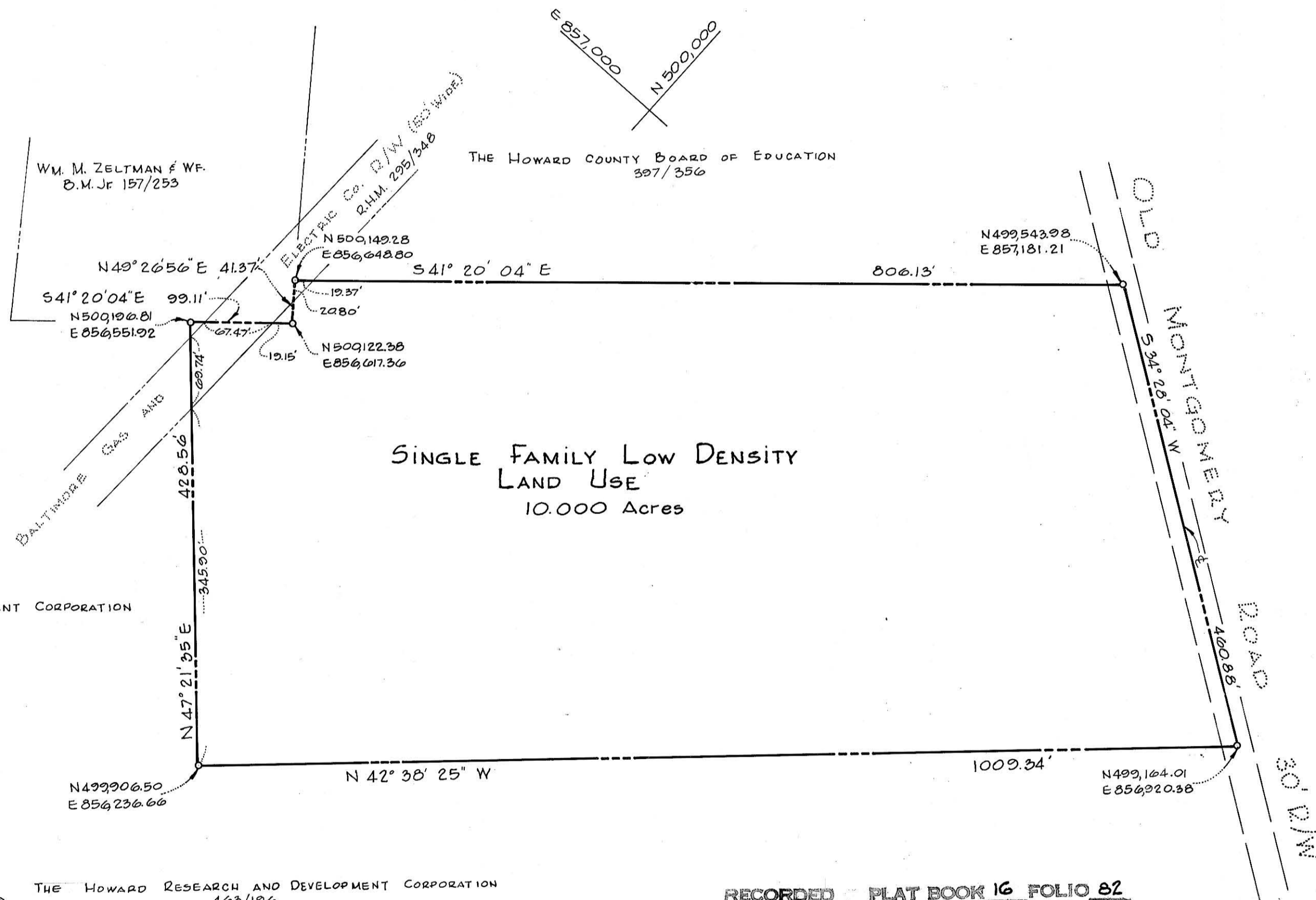


THE LAND ENCOMPASSED BY THIS FINAL DEVELOPMENT PLAN WILL BE CONVEYED TO HOWARD COUNTY, MARYLAND (HOWARD COUNTY METROPOLITAN COMMISSION) FOR PUBLIC USE.



VICINITY MAP
Scale: 1"=800'



SINGLE FAMILY LOW DENSITY
LAND USE
10.000 Acres

RECORDED PLAT BOOK 16 FOLIO 82
ON 1/20 1862 AMONG THE LAND RECORDS OF
HOWARD COUNTY, MD.

PART OF THE ZELTMAN FARM
PETITIONER AND OWNER
THE HOWARD RESEARCH AND DEVELOPMENT CORPORATION
THE VILLAGE OF CROSS KEYS
BALTIMORE, MARYLAND 21210

COLUMBIA

FINAL DEVELOPMENT PLAN PHASE 63
6TH ELECTION DISTRICT HOWARD COUNTY, MD.
SCALE 1"=100' AUGUST 1968 SHEET 1 OF 1

PREPARED AS TO SHEET 1
IN ACCORDANCE WITH THE ZONING REGULATIONS
OF HOWARD COUNTY
ADOPTED MAY 16, 1961 AND AS
AMENDED MAY 27, 1965

Lawrence Relford #5871
LAND SURVEYOR'S SIGNATURE



BOARD OF COUNTY COMMISSIONERS B.C.C. CASE 412
RESOLUTION APPROVED AUGUST 10, 1965

HOWARD COUNTY PLANNING COMMISSION
APPROVED AS TO LEGAL SUFFICIENCY

James M. Vaughan 1/17/68 H.C.P.C. COUNSEL DATE
William K. Adams 1-17-68 H.C.P.C. CHAIRMAN DATE