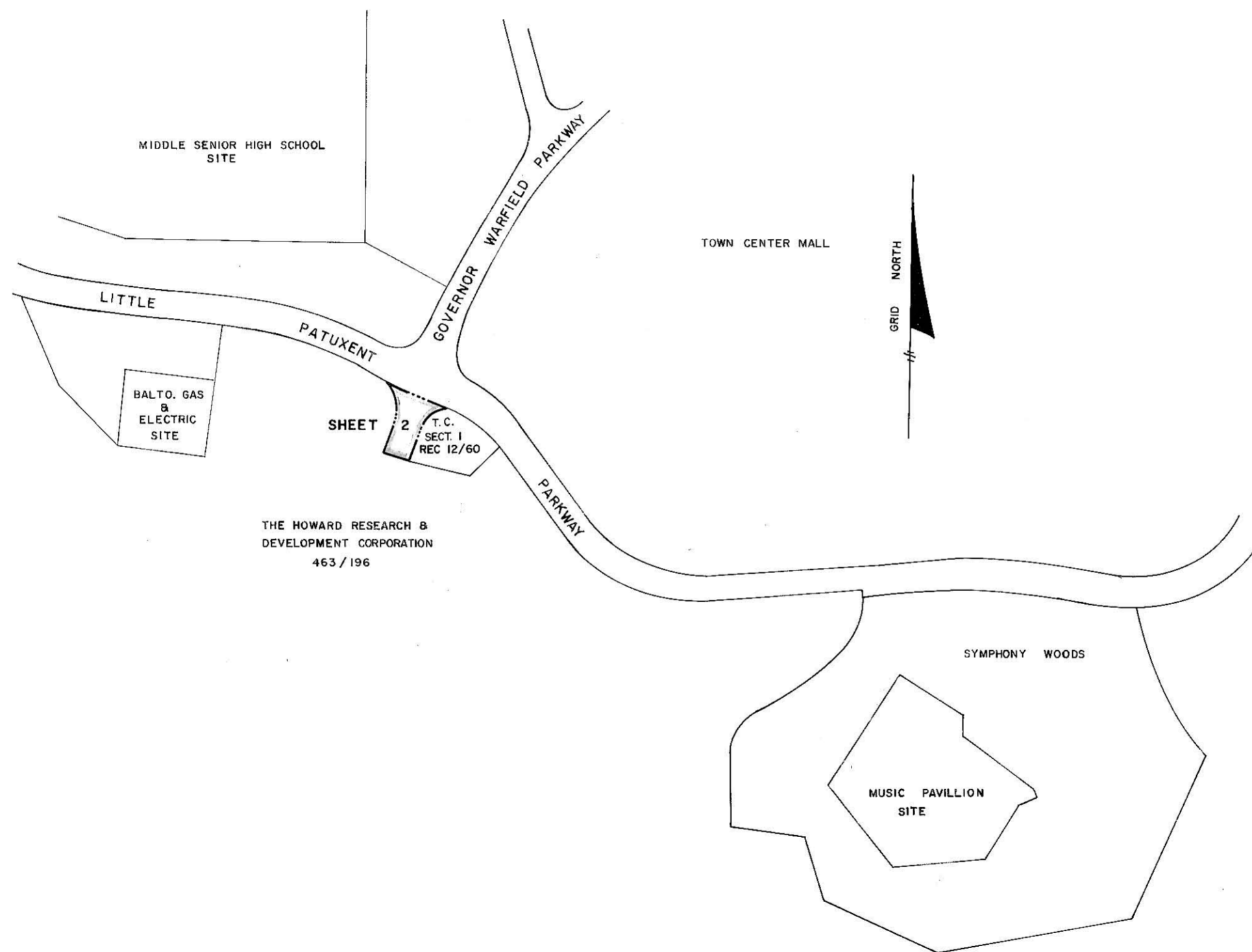


VICINITY MAP  
SCALE: 1" = 2000'



RECORDED PLAT BOOK 16 FOLIO 47  
ON 8-30-68 AMONG THE LAND RECORDS OF  
HOWARD COUNTY, MD.

TOWN CENTER  
SECTION 3 AREA 1  
PETITIONER AND OWNER  
THE HOWARD RESEARCH AND DEVELOPMENT CORPORATION  
THE VILLAGE OF CROSS KEYS  
BALTIMORE, MARYLAND 21210

# COLUMBIA

FINAL DEVELOPMENT PLAN PHASE FIFTY-FOUR  
5<sup>TH</sup> ELECTION DISTRICT HOWARD COUNTY, MD.  
SCALE 1" = 400' AUGUST, 1968 SHEET 1 OF 2

PREPARED AS TO SHEETS 1 TO 2  
IN ACCORDANCE WITH THE ZONING REGULATIONS  
OF HOWARD COUNTY  
ADOPTED MAY 16, 1961 AND AS  
AMENDED MAY 27, 1965

*Lawrence Redfield* 5871  
LAND SURVEYOR'S SIGNATURE

BOARD OF COUNTY COMMISSIONERS B.C.C. CASE 412  
RESOLUTION APPROVED AUGUST 10, 1965

HOWARD COUNTY PLANNING COMMISSION  
APPROVED AS TO LEGAL SUFFICIENCY

*James M. ...* 8/12/68  
H. C. P. C. COUNSEL DATE H. C. P. C. CHAIRMAN DATE

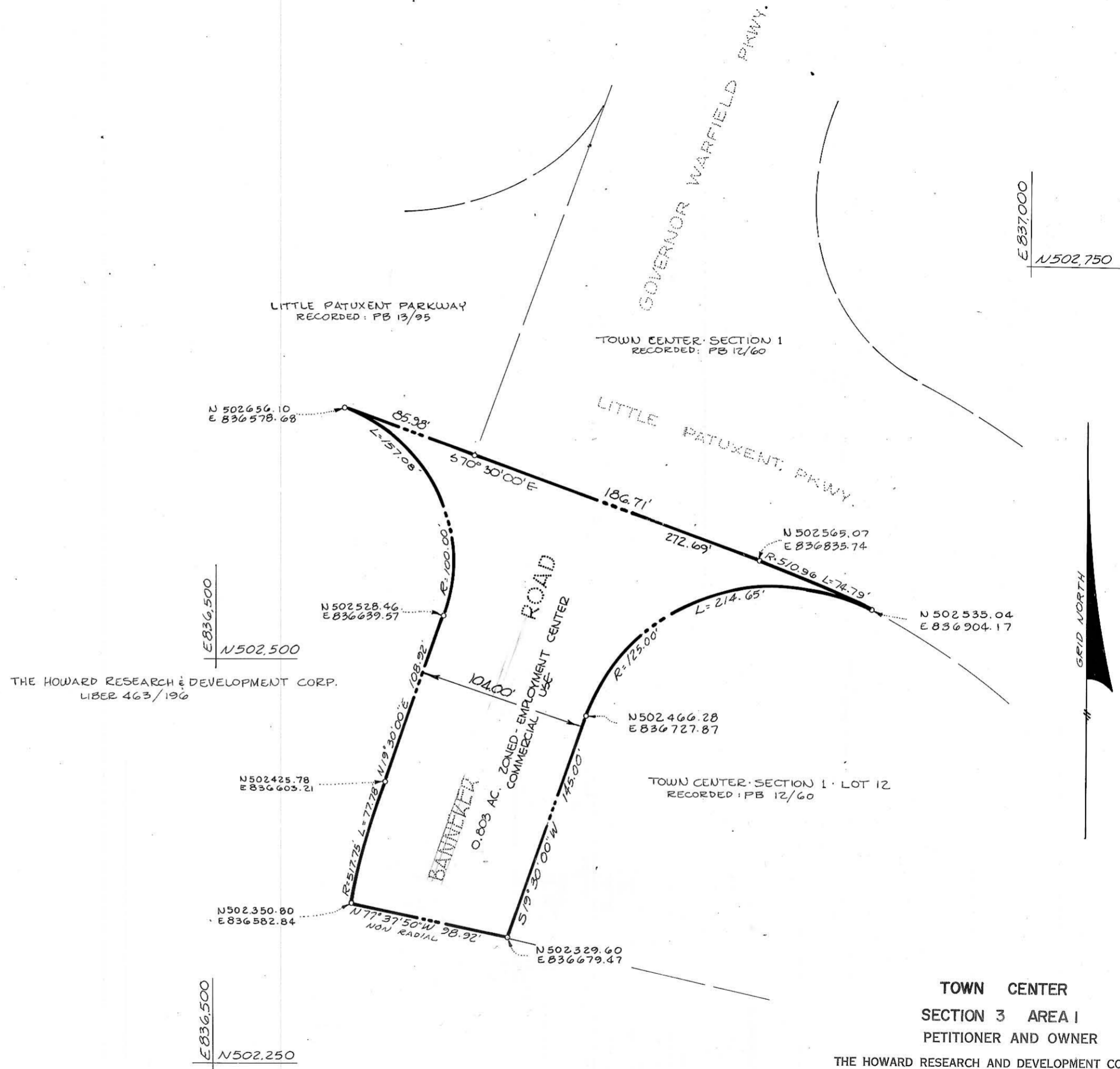
FINAL DEVELOPMENT PLAN CRITERIA - PHASE 54

The area included in this Final Development Plan Phase is Applicable to Section 3, Area 1 of Town Center

All of the land within this Final Development Plan Phase shall be used as the right-of-way for a portion of Banner Road and may be used for roadway and utility easement purposes. For the purpose of land use allocations under the provisions of Section 17.018 of the Howard County Zoning Regulations, such land shall be classified as Employment Center, Commercial Land use, as indicated on the maps contained in this Final Development Plan Phase.

TABULATION OF LAND USE IN ACRES

Land Use	Acres
Employment Center Commercial	0.803



RECORDED PLAT BOOK 16 FOLIO 48  
 IN 8-30 1968 AMONG THE LAND RECORDS OF  
 HOWARD COUNTY, MD.

TOWN CENTER  
 SECTION 3 AREA 1  
 PETITIONER AND OWNER  
 THE HOWARD RESEARCH AND DEVELOPMENT CORPORATION  
 THE VILLAGE OF CROSS KEYS  
 BALTIMORE, MARYLAND 21210

# COLUMBIA

FINAL DEVELOPMENT PLAN PHASE FIFTY-FOUR  
 5<sup>TH</sup> ELECTION DISTRICT HOWARD COUNTY, MD.  
 SCALE 1" = 50' AUGUST, 1968 SHEET 2 OF 2