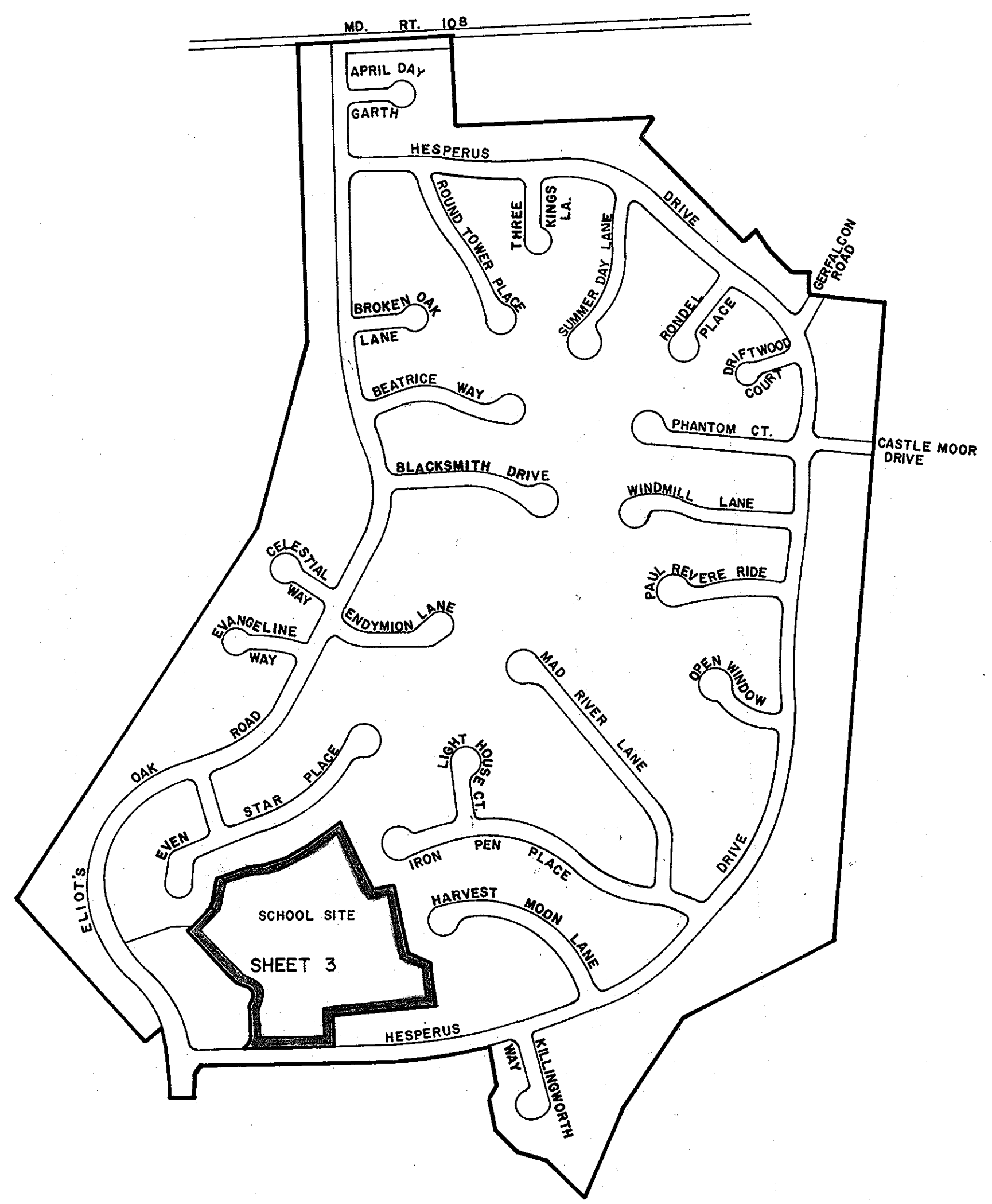


VICINITY MAP  
1:2640



RECORDED PLAT BOOK 14 FOLIO 44  
ON 3/29 1968 AMONG THE LAND RECORDS OF  
HOWARD COUNTY, MD.

VILLAGE OF HARPER'S CHOICE  
SECTION 1  
LONGFELLOW - AREA 5  
PETITIONER  
THE HOWARD RESEARCH & DEVELOPMENT CORPORATION  
THE VILLAGE OF CROSS KEYS  
BALTIMORE MARYLAND 21210

# COLUMBIA

FINAL DEVELOPMENT PLAN PHASE THIRTY THREE  
5<sup>TH</sup> ELECTION DISTRICT HOWARD COUNTY, MD.  
SCALE: 1" = 400'  
JANUARY, 1968

PREPARED AS TO SHEETS 1 TO 3  
IN ACCORDANCE WITH THE ZONING  
REGULATIONS OF HOWARD COUNTY  
ADOPTED MAY 16, 1961 AND AS  
AMENDED MAY 27, 1965

*Bernard J. Rodgers*  
LAND SURVEYORS SIGNATURE



BOARD OF COUNTY COMM. B.C.C. CASE 412  
RESOLUTION APPROVED AUGUST 10, 1965

HOWARD COUNTY PLANNING COMMISSION  
APPROVED AS TO LEGAL SUFFICIENCY  
*James N. Vaughan* 1/24/68 *William H. Damm* 1-24-68  
H.C.P.C. COUNSEL DATE H.C.P.C. CHAIRMAN DATE

FINAL DEVELOPMENT PLAN CRITERIA - PHASE 33  
VILLAGE OF HARPER'S CHOICE SECTION 1, AREA 5, LOT 4

1. PUBLIC STREETS AND ROADS - SECTION 17.031 A (1):  
As shown on subdivision plats.
2. PUBLIC RIGHTS-OF-WAY - SECTION 17.031 A (2):  
As shown on subdivision plats.
3. MAJOR UTILITY RIGHTS-OF-WAY - SECTION 17.031 A (3):  
As shown on subdivision plats.
4. DRAINAGE FACILITIES - SECTION 17.031 A (4):  
As shown on subdivision plats.
5. RECREATIONAL, SCHOOL, PARK, AND OTHER COMMUNITY USES - SECTION 17.031 B:  
As shown on Final Development Plan.
6. PERMITTED GENERAL LOCATION OF ALL BUILDINGS AND STRUCTURES - SECTION 17.031 D:
  - A. SCHOOL SITES  
No structure shall be located within 25 feet of the right-of-way of any public street, road, or highway nor within 25 feet of any property line.
7. PERMITTED USES - SECTION 17.031 D:
  - A. SCHOOL SITE  
Lot 4 shall be used as a public school. In computing the amount of land devoted to Open Space Use under the requirements of Section 17.018 of the Howard County Zoning Regulations, only 90% of the area of Lot 4 shall be evaluated as Open Space Use.
8. HEIGHT LIMITATIONS - SECTION 17.031 E:
  - A. SCHOOL SITES  
No structure shall be constructed upon areas designated as school sites more than 35 feet in height from the highest adjoining ground elevations.
9. PARKING REQUIREMENTS - SECTION 17.031 E:  
25 parking spaces shall be provided on Lot 4 which is to be used as a school site.
10. SETBACK PROVISIONS - SECTION 17.031 E:
  - A. Setbacks shall conform to the requirements of Section 6 above.

B. No other setback restrictions are imposed upon land within this Final Development Plan Phase.

11. MINIMUM LOT SIZES - SECTION 17.031 E:

As shown on subdivision plat.

12. COVERAGE REQUIREMENTS - SECTION 17.031 E:

A. SCHOOL SITES

No coverage requirement is imposed upon land within this Final Development Plan Phase used as a School Site.

TABULATION OF LAND USE IN ACRES

Land Use	
Open Space	
Credited	8.548
Non-Credited	.950
Total	9.498

RECORDED PLAT BOOK 14 FOLIO 45  
ON 3/29 <sup>19</sup>~~68~~ <sub>68</sub> AMONG THE LAND RECORDS OF  
HOWARD COUNTY, MD.

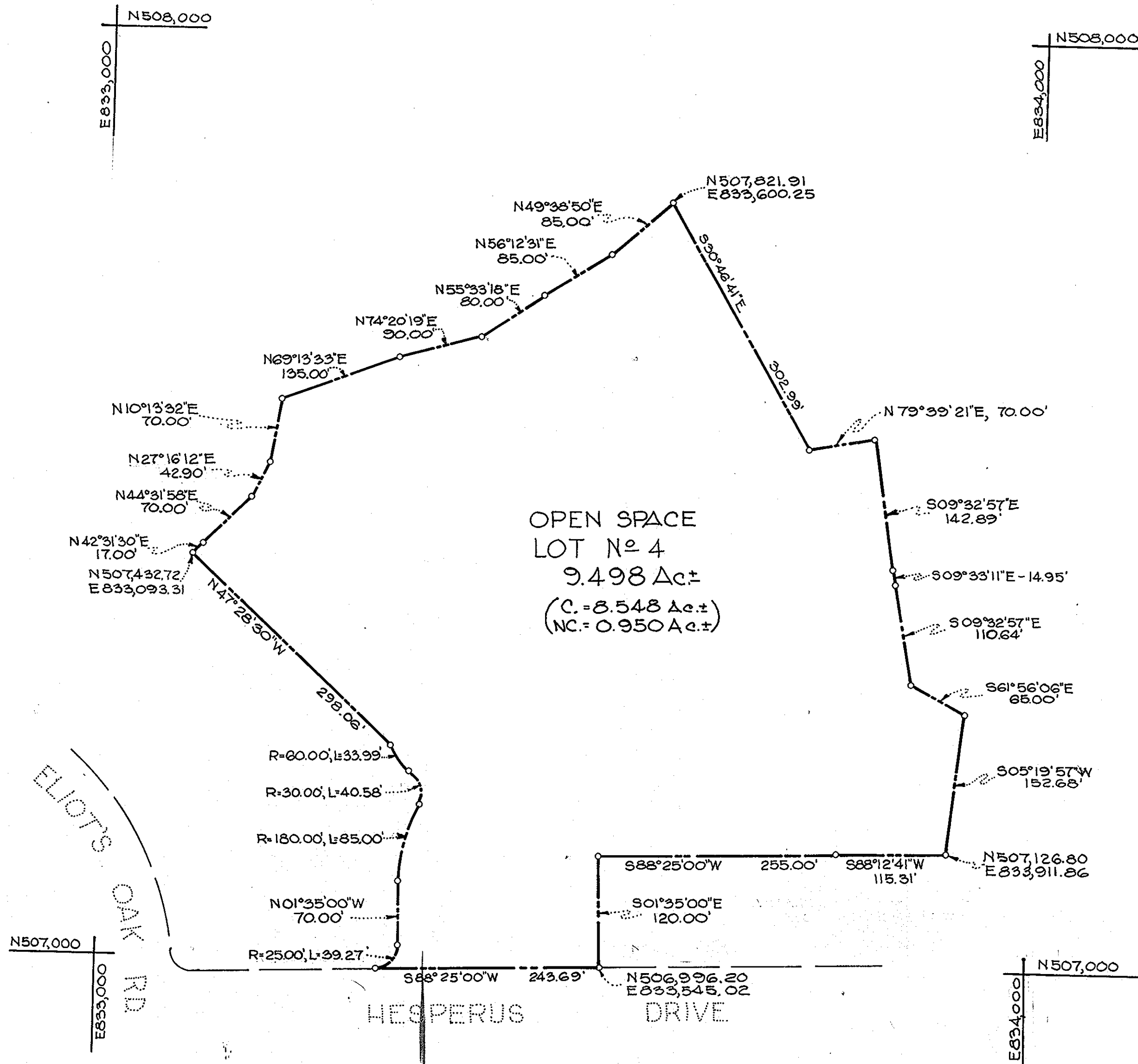
VILLAGE OF HARPER'S CHOICE  
SECTION 1  
LONGFELLOW - AREA 5  
PETITIONER  
THE HOWARD RESEARCH & DEVELOPMENT CORPORATION  
THE VILLAGE OF CROSS KEYS  
BALTIMORE MARYLAND 21210

COLUMBIA

FINAL DEVELOPMENT PLAN PHASE THIRTY THREE  
5<sup>TH</sup> ELECTION DISTRICT HOWARD COUNTY, MD.

JANUARY, 1968

GARD NORTH



RECORDED PLAT BOOK 14 FOLIO 46  
ON 3/22 1968 AMONG THE LAND RECORDS OF  
HOWARD COUNTY, MD.

VILLAGE OF HARPER'S CHOICE  
SECTION 1  
LONGFELLOW - AREA 5

PETITIONER  
THE HOWARD RESEARCH & DEVELOPMENT CORPORATION  
THE VILLAGE OF CROSS KEYS  
BALTIMORE MARYLAND 21210

# COLUMBIA

FINAL DEVELOPMENT PLAN PHASE THIRTY THREE  
5TH ELECTION DISTRICT HOWARD COUNTY, MD.  
SCALE 1" = 100' JANUARY, 1968