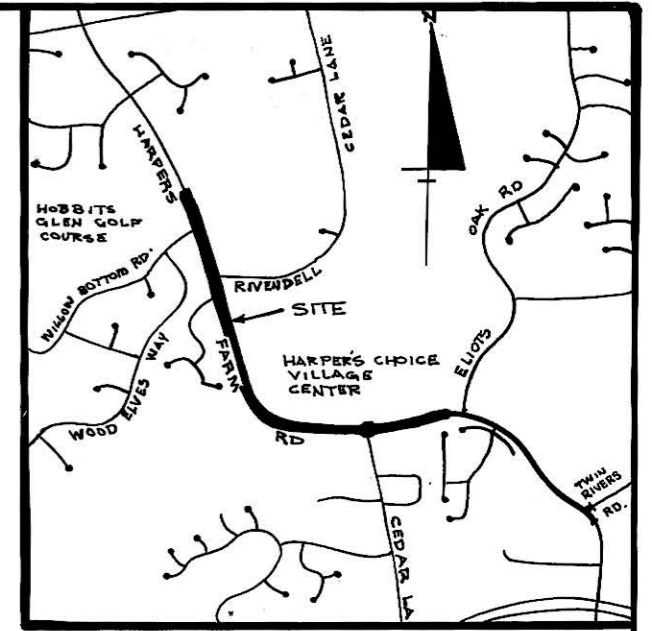


KEY MAP
SCALE: 1"=400'



VICINITY MAP
SCALE: 1"=2000'

RIGHT-OF-WAY AREA

All of the land within this Final Development Plan Phase shall be used as the right-of-way for a portion of Harper's Farm Road and may be used for roadway and utility easement purposes. For the purpose of land use allocations under the provisions of Section 125-A.8 of the Howard County Zoning Regulations, such land shall be classified as single family low density land use, as indicated on the maps contained in this Final Development Plan Phase.

TABULATION OF LAND USE	
LAND USE	ACRES
SINGLE FAMILY LOW DENSITY	8.981
ROADWAY	8.981
TOTAL	8.981

DATE 1-24-96
REF# 3054-A-1515 *SWW*

COLUMBIA

VILLAGE OF HARPERS CHOICE
HARPERS FARM ROAD

PETITIONER
THE HOWARD RESEARCH & DEVELOPMENT CORP.

FINAL DEVELOPMENT PLAN PHASE 227

5th ELECTION DISTRICT OF HOWARD COUNTY, MARYLAND

SHEET 1 OF 3

PREPARED AS TO SHEETS 1 TO 4
IN ACCORDANCE WITH THE ZONING REGULATIONS
OF HOWARD COUNTY
ADOPTED OCTOBER 18, 1993



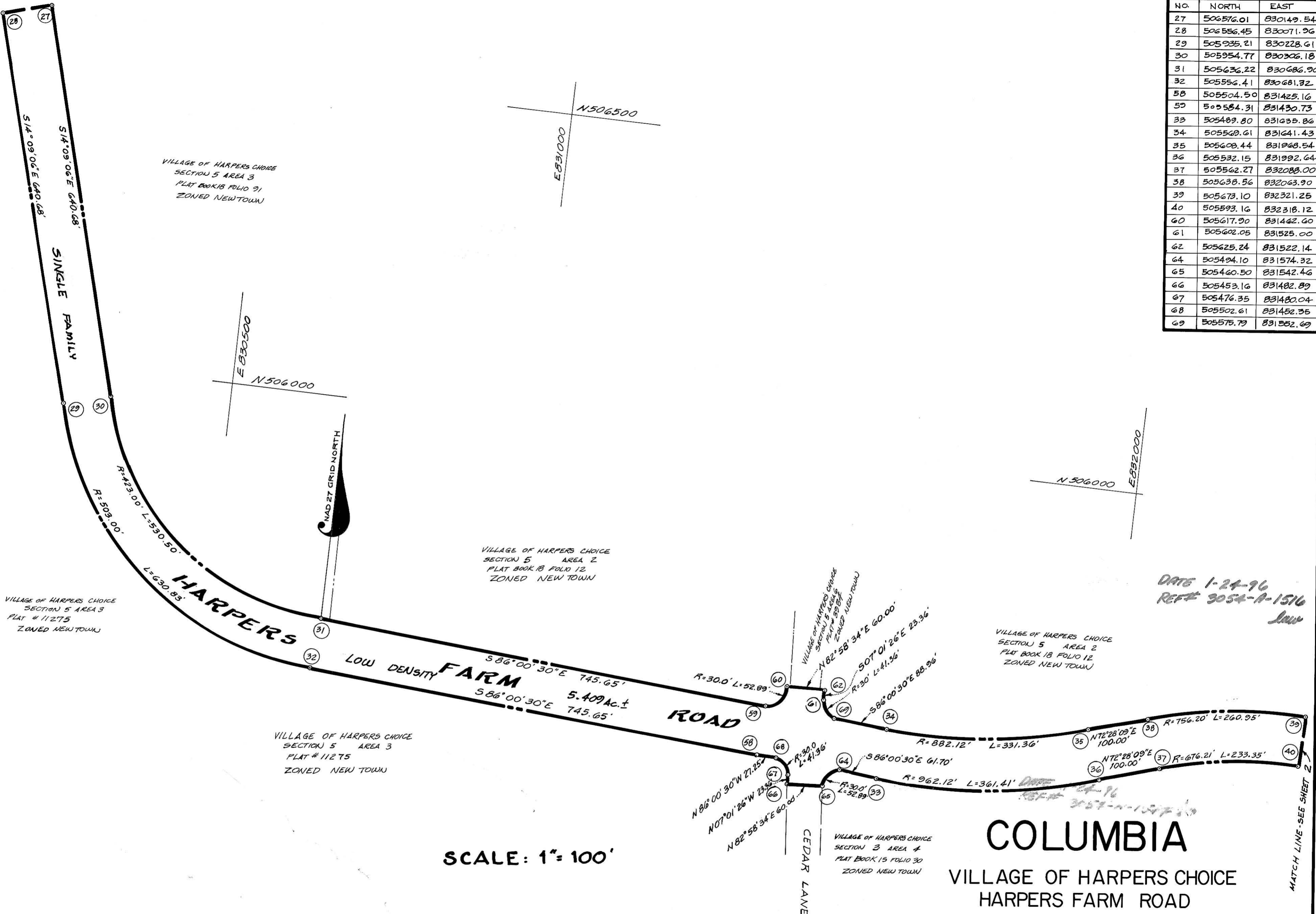
BOARD OF COUNTY COMMISSIONERS CASE B.C.C. 412 RESOLUTION APPROVED 8-10-65
AMENDED B.C.C. CASE 507 RESOLUTION APPROVED 11-04-68
AMENDED Z.B. CASE 606 RESOLUTION APPROVED 11-22-72
AMENDED Z.B. CASE 664 RESOLUTION APPROVED 01-07-74
AMENDED Z.B. CASE 693 RESOLUTION APPROVED 12-20-76
AMENDED Z.B. CASE 817 RESOLUTION APPROVED 09-09-86
AMENDED Z.B. CASE 918 RESOLUTION APPROVED 03-17-92
AMENDED Z.B. CASE 939 RESOLUTION APPROVED 11-19-92
AMENDED Z.B. CASE 969 RESOLUTION APPROVED 10-23-95

HOWARD COUNTY PLANNING BOARD
Joseph S. Smith 1/13/96 *Joseph Hedger, Jr.* 18 Jan 96
H.C.P.B. EXEC. SECRETARY DATE H.C.P.B. CHAIRMAN DATE

Joseph S. Smith

MATCH LINE - SEE SHEET 4

COORDINATE SCHEDULE		
NO.	NORTH	EAST
27	506576.01	830149.54
28	506556.45	830071.96
29	505935.21	830228.61
30	505954.77	830306.18
31	505636.22	830686.90
32	505556.41	830681.82
58	505504.50	831425.16
59	505584.31	831430.73
33	505489.80	831635.86
34	505569.61	831641.43
35	505608.44	831868.54
36	505532.15	831992.64
37	505562.27	832088.00
38	505638.56	832063.90
39	505673.10	832321.25
40	505593.16	832318.12
60	505617.90	831462.60
61	505602.05	831525.00
62	505625.24	831522.14
64	505494.10	831574.32
65	505460.50	831542.46
66	505453.16	831482.89
67	505476.35	831480.04
68	505502.61	831452.35
69	505575.79	831552.69



DATE 1-24-96
 REF# 9054-A-1516
 JAW

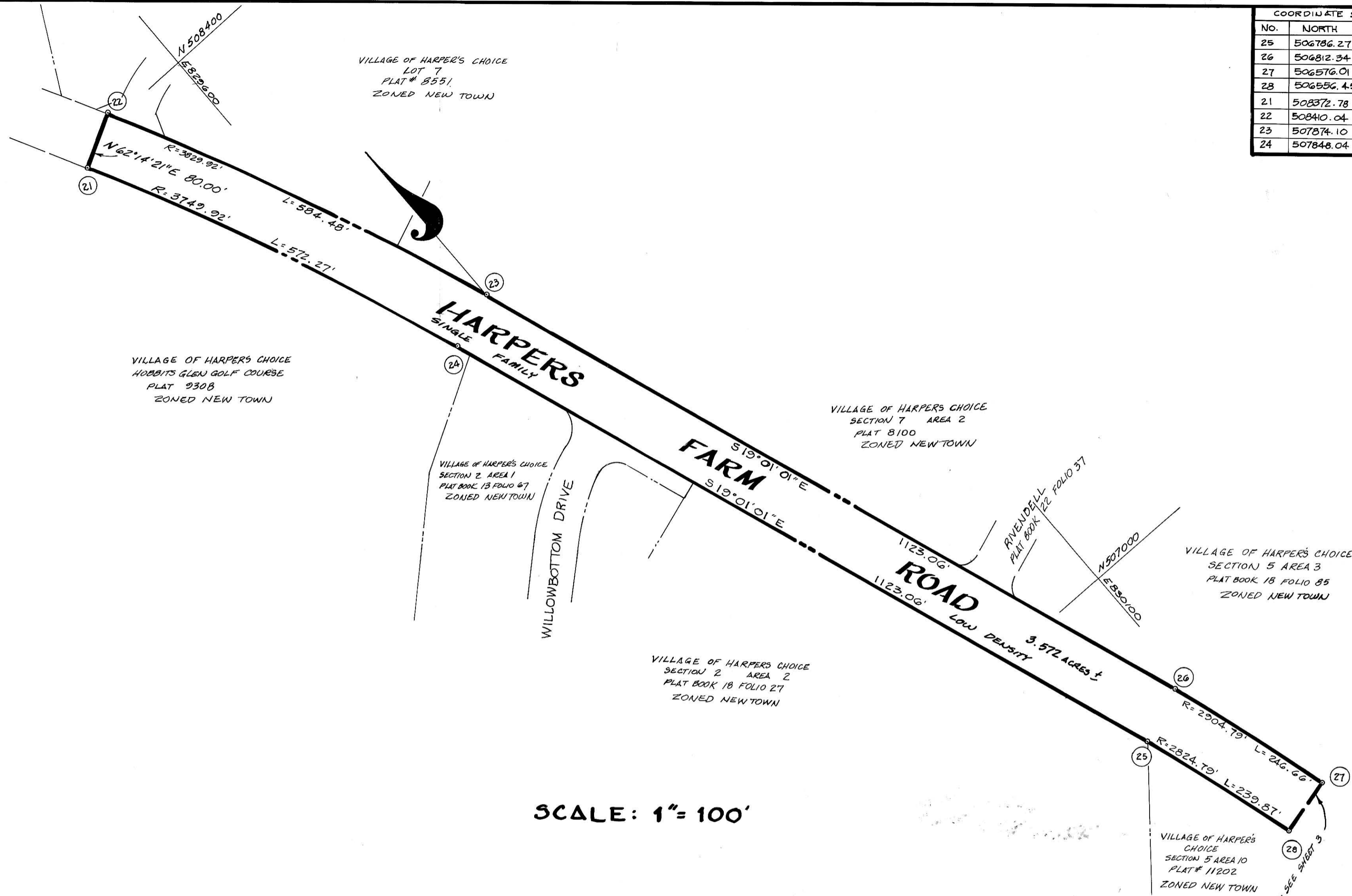
SCALE: 1" = 100'

COLUMBIA
 VILLAGE OF HARPERS CHOICE
 HARPERS FARM ROAD

PETITIONER
 THE HOWARD RESEARCH & DEVELOPMENT CORP.

FINAL DEVELOPMENT PLAN PHASE 227
 5th ELECTION DISTRICT OF HOWARD COUNTY, MARYLAND

COORDINATE SCHEDULE		
NO.	NORTH	EAST
25	506786.27	830003.52
26	506812.34	830079.15
27	506576.01	830149.54
28	506556.45	830071.96
21	508372.78	829410.62
22	508410.04	829481.41
23	507874.10	829713.21
24	507848.04	829637.57



SCALE: 1" = 100'

DATE 1-24-96
REF# 3054-A-1517 Jim

COLUMBIA

VILLAGE OF HARPER'S CHOICE
HARPERS FARM ROAD

PETITIONER
THE HOWARD RESEARCH & DEVELOPMENT CORP.

FINAL DEVELOPMENT PLAN PHASE 227

5th ELECTION DISTRICT OF HOWARD COUNTY, MARYLAND