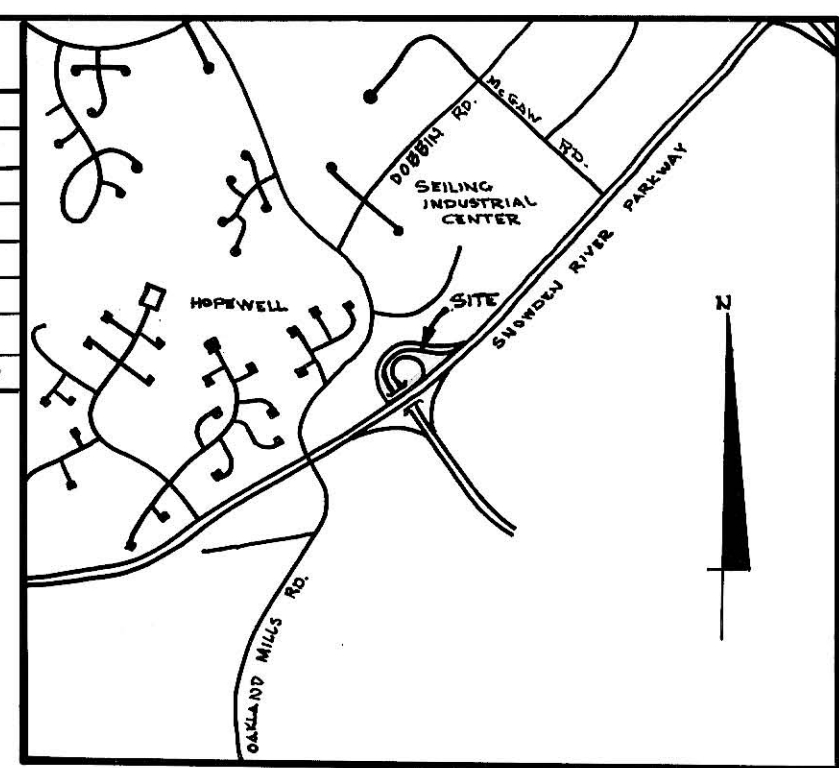


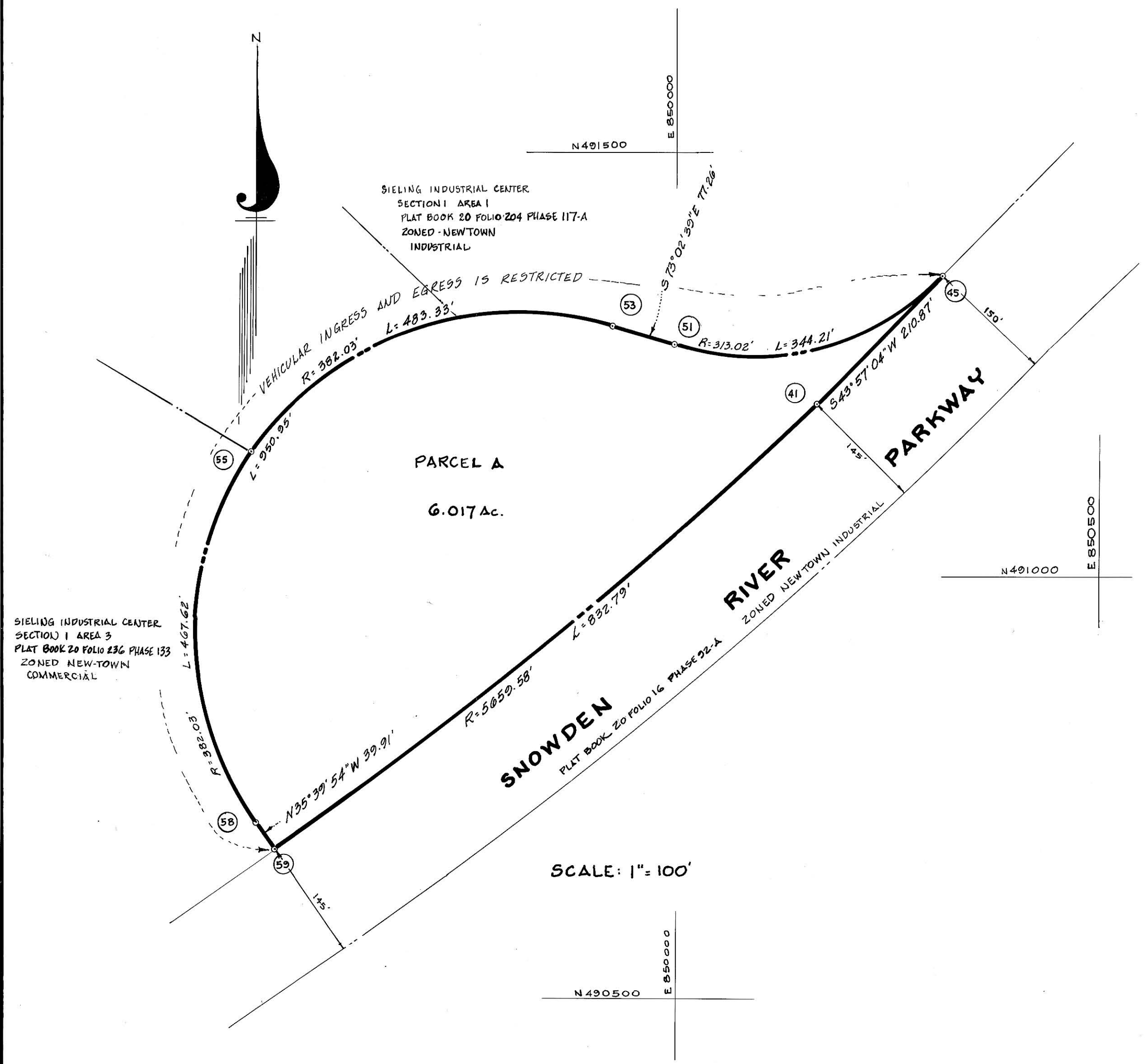
COORDINATES		
NO.	NORTH	EAST
41	491202.715	850167.889
45	491354.527	850314.242
51	491272.364	849997.602
53	491294.895	849923.700
55	491145.676	849497.322
58	490706.732	849501.911
59	490674.308	849525.179



VICINITY MAP
SCALE: 1" = 2000'

TABULATION OF LAND USE

LAND USE	ACRES
EMPLOYMENT CENTER INDUSTRIAL	6.017
ROADWAY 6.017	
TOTAL	6.017



**FINAL DEVELOPMENT PLAN CRITERIA
PHASE 215**

THE AREA INCLUDED WITHIN THIS FINAL DEVELOPMENT PLAN PHASE IS APPLICABLE TO SIELING INDUSTRIAL CENTER, SECTION 1 AREA 4.

RIGHT-OF-WAY AREAS
ALL OF THE LAND WITHIN THIS FINAL DEVELOPMENT PLAN PHASE SHALL BE USED AS THE RIGHT-OF-WAY FOR GATEWAY COMMERCE CENTER AND MAY BE USED FOR ROADWAY AND UTILITY EASEMENT PURPOSES. FOR THE PURPOSE OF LAND USE ALLOCATIONS UNDER THE PROVISIONS OF SECTION 122-A-B OF THE HOWARD COUNTY ZONING REGULATIONS, SUCH LAND SHALL BE CLASSIFIED AS EMPLOYMENT CENTER, INDUSTRIAL USE, AS INDICATED ON THE MAP CONTAINED IN THIS FINAL DEVELOPMENT PLAN PHASE. VEHICULAR INGRESS AND EGRESS WILL BE RESTRICTED EXCEPT AT POINTS OF ACCESS APPROVED BY THE DEPT. OF PLANNING AND ZONING.

**SIELING INDUSTRIAL CENTER
SECTION 1 AREA 4**

PETITIONER
THE HOWARD RESEARCH AND DEVELOPMENT CORPORATION
COLUMBIA, MARYLAND 21044

COLUMBIA

FINAL DEVELOPMENT PLAN PHASE 215
6TH ELECTION DISTRICT OF HOWARD COUNTY, MD.

PREPARED AS TO SHEET 1 IN ACCORDANCE WITH THE ZONING REGULATIONS OF HOWARD COUNTY ADOPTED AUGUST 2, 1985



BOARD OF COUNTY COMMISSIONERS B.C.C. CASE 412 RESOLUTION APPROVED AUG. 10, 1965
AMENDED B.C.C. CASE 507 RESOLUTION APPROVED NOV. 4, 1968
AMENDED Z.B. CASE 606 RESOLUTION APPROVED NOV. 22, 1972
AMENDED Z.B. CASE 644 RESOLUTION APPROVED JAN. 7, 1974
AMENDED Z.B. CASE 693 RESOLUTION APPROVED DEC. 20, 1976
AMENDED Z.B. CASE 817 RESOLUTION APPROVED SEPT. 9, 1986

HOWARD COUNTY PLANNING BOARD
James R. Rutter 1/21/92 H.C.P.B. EXEC. SECRETARY
Allen E. Rether 1/21/92 H.C.P.B. CHAIRMAN

2/3/92 3054-A-1225
FILED IN THE LAND RECORDS OF

Michael Walsh
PROPERTY LINE SURVEYOR

SCALE: AS SHOWN

SHEET 1 OF 1