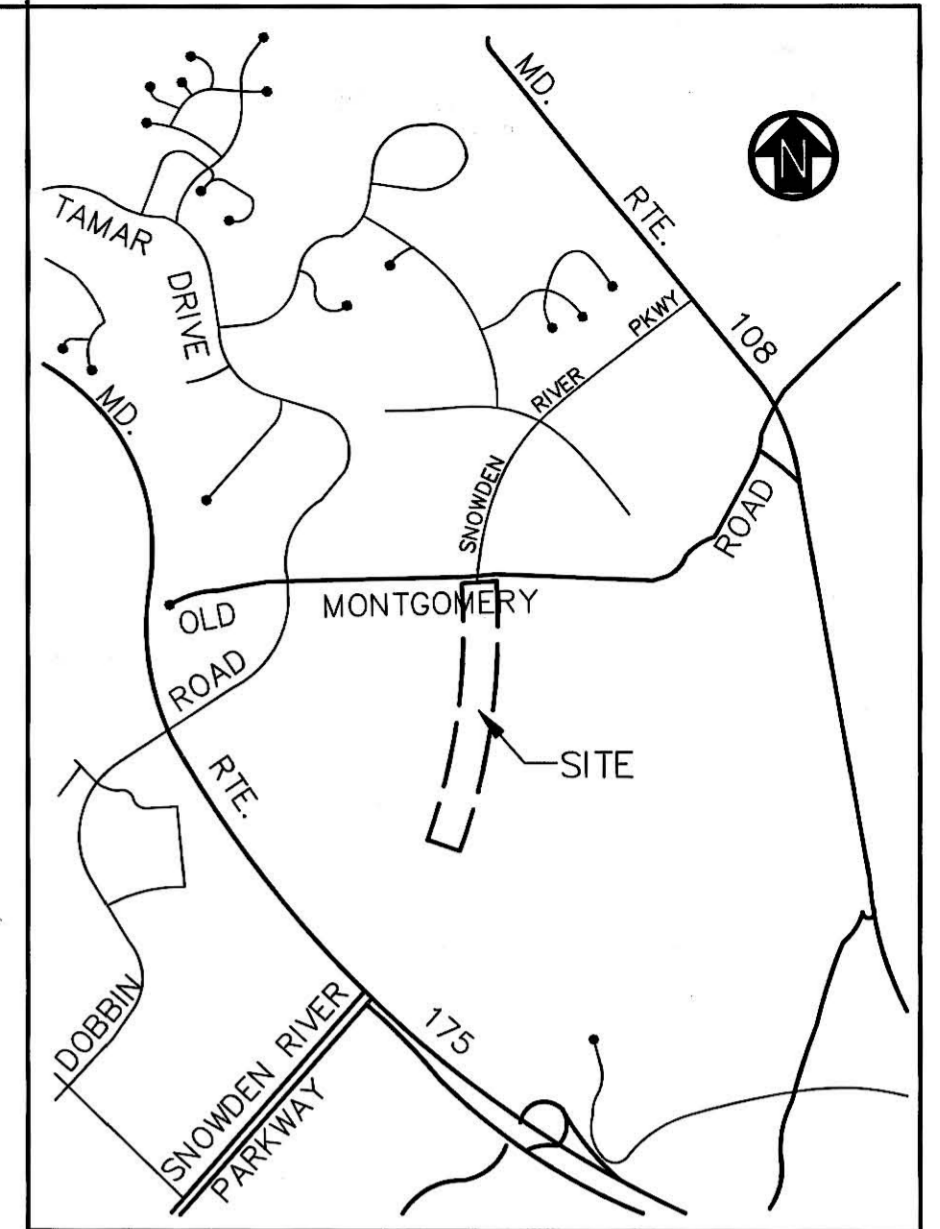
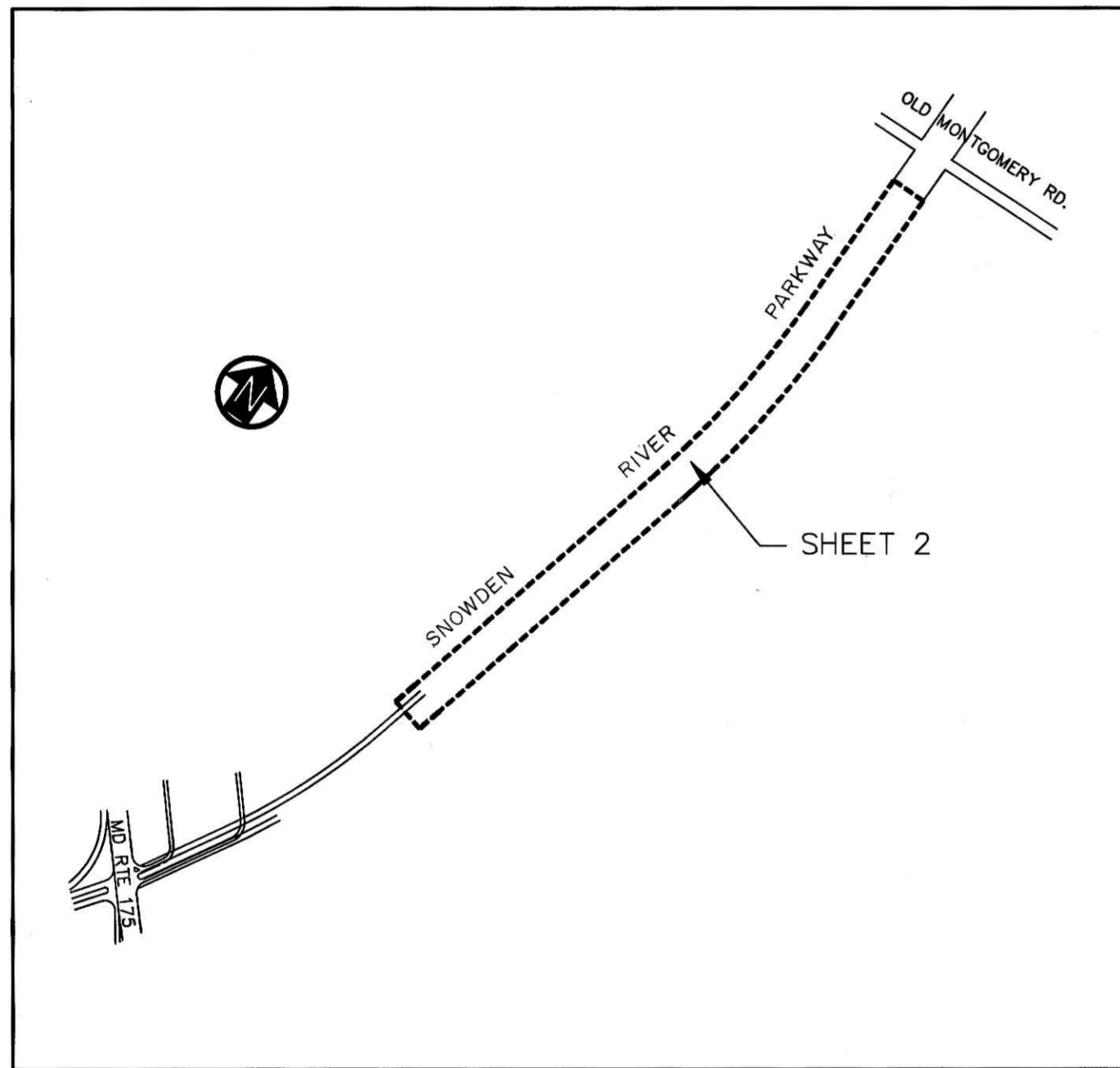


VILLAGE OF LONGREACH SECTION 3-AREA 4 FINAL DEVELOPMENT PLANS



VICINITY MAP
SCALE: 1" = 2000'

LAND USE	ACRES
COMMERCIAL ROADWAY	10.404 AC.
TOTAL FOR SECTION 3 AREA 4	10.404



LOCATION MAP
SCALE: 1" = 600'

NOTE: All of the land within this Final Development Plan Phase shall be used as the right-of-way for a portion of Snowden River Parkway and may be used for roadway and utility easement purposes. For the purpose of land use allocations under the provisions of Section 122-A-8 of the Howard County Zoning Regulations, such land shall be classified as Employment Center Commercial use, as indicated on the maps contained in this Final Development Plan Phase.

RECORDED # PLAT FDP-197-3054A-1080
12-29-89 AMONG THE LAND RECORDS OF HOWARD COUNTY, MD.

VILLAGE OF LONGREACH
SECTION 3-AREA 4
PETITIONER AND OWNER
THE HOWARD RESEARCH AND DEVELOPMENT LAND CO.
COLUMBIA, MARYLAND 21044

COLUMBIA

FINAL DEVELOPMENT PLAN
PHASE 197 - PART III
6th ELECTION DISTRICT HOWARD COUNTY, MD.
SCALE: AS SHOWN SHEET 1 OF 2

PREPARED IN ACCORDANCE WITH
THE ZONING REGULATIONS OF
HOWARD COUNTY ADOPTED
AUGUST 2, 1985



BOARD OF COUNTY COMM. B.C.C. CASE 412 RESOLUTION APPROVED 8-10-65
AMMENDED B.C.C. CASE 507 RESOLUTION APPROVED NOV. 4, 1968
AMMENDED Z.B. CASE 606 RESOLUTION APPROVED NOV. 22, 1972
AMMENDED Z.B. CASE 644 RESOLUTION APPROVED JAN. 7, 1974
AMMENDED Z.B. CASE 693 RESOLUTION APPROVED DEC. 20, 1976
AMMENDED Z.B. CASE 817 RESOLUTION APPROVED SEPT. 9, 1986

HOWARD COUNTY PLANNING BOARD
Joseph S. Reuter 12/20/89 DATE H.O.P.B. EXEC. SECRETARY
Katherine Mann 12/20/89 DATE H.C.P.B. CHAIRMAN

William D. Purdum
WILLIAM D. PURDUM, L.S.

FDP-197-3054A-1080

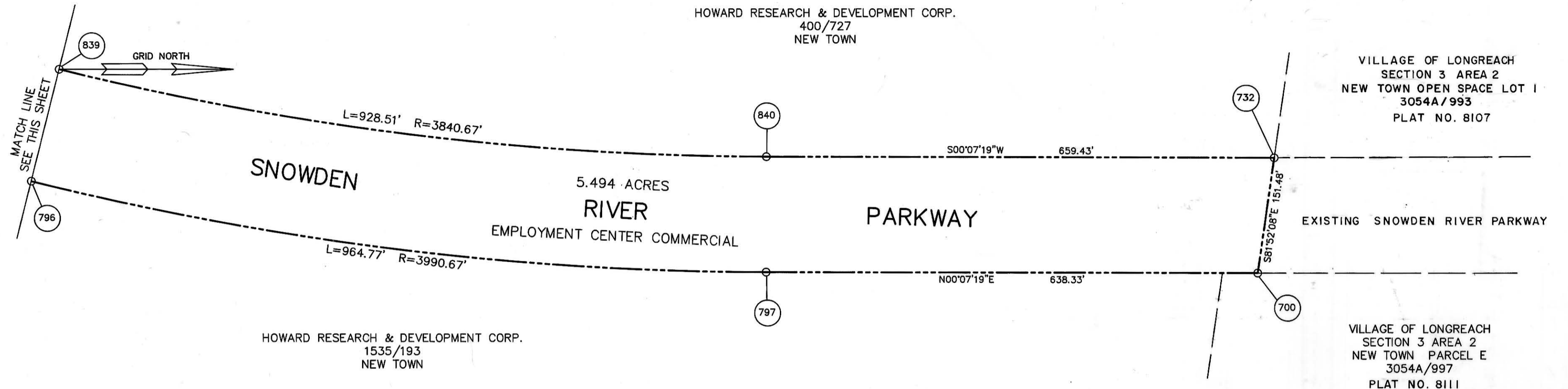
E 854000
N 497000

E 854000
N 498750

N 497000
E 854500

HOWARD RESEARCH & DEVELOPMENT CORP.
400/727
NEW TOWN

VILLAGE OF LONGREACH
SECTION 3 AREA 2
NEW TOWN OPEN SPACE LOT 1
3054A/993
PLAT NO. 8107



SNOWDEN

5.494 ACRES

RIVER

PARKWAY

EMPLOYMENT CENTER COMMERCIAL

EXISTING SNOWDEN RIVER PARKWAY

HOWARD RESEARCH & DEVELOPMENT CORP.
1535/193
NEW TOWN

VILLAGE OF LONGREACH
SECTION 3 AREA 2
NEW TOWN PARCEL E
3054A/997
PLAT NO. 8111

HOWARD RESEARCH & DEVELOPMENT CORP.
400/727
NEW TOWN

MARYLAND STATE
HIGHWAY ADMINISTRATION

SNOWDEN

EMPLOYMENT CENTER COMMERCIAL

RIVER

PARKWAY

4.910 ACRES

E 854000
N 495500

E 854000
N 497000

N 497000
E 854500

RECORDED # 197-197-3054A-1081
IN 12-29-89 AMONG THE LAND RECORDS OF
HOWARD COUNTY, MD.

VILLAGE OF LONGREACH
SECTION 3

PETITIONER AND OWNER
THE HOWARD RESEARCH AND DEVELOPMENT LAND CO.
COLUMBIA, MARYLAND 21044

COLUMBIA

FINAL DEVELOPMENT PLAN
PHASE 197 - PART III
6th ELECTION DISTRICT HOWARD COUNTY, MD.

SCALE: 1" = 100' SHEET 2 OF 2

POINT	NORTH	EAST
700	498736.1680	854503.9750
732	498757.5930	854354.0202
795	495758.3142	854040.0446
796	497142.6868	854384.5303
797	498097.8419	854502.6169
838	495794.4788	853894.4695
839	497178.9081	854238.9693
840	498098.1610	854352.6172

CURVE DATA								
CURVE	Δ	RADIUS	TANGENT	LENGTH	CHD LENGTH	CHD BEARING		
839 - 840	13°51'06"	3840.67'	466.53'	928.51'	926.25'	N07°02'52"E		
796 - 797	13°51'06"	3990.67'	484.75'	964.77'	962.43'	N07°02'52"E		

FDP 197 3054 A 1081