

COORDINATES

NO.	NORTH	EAST	NO.	NORTH	EAST
7	501132.17	837377.60	376	501492.94	837382.06
109	500213.92	837602.30	377	501686.66	837442.80
110	500068.13	837638.25	378	501817.03	837499.48
130	500182.50	837584.25	379	501938.07	837466.18
131	500085.25	837608.05	380	501820.36	837747.49
355	499741.94	837772.90	381	501761.66	837638.97
356	499851.48	837902.52	382	501626.85	837580.35
357	501380.96	837364.48	383	501113.58	837536.58
358	501499.57	837348.95	384	500168.75	837767.78
8	501820.36	837747.49	9	502066.04	837331.89
50	501847.38	838309.52	51	501805.81	837989.46
52	501817.35	837741.92	53	501802.87	837493.32
54	501904.33	837475.46	55	502000.90	837378.11
56	502081.89	837303.24	57	502193.91	837214.84
58	502234.25	837198.09			

VILLAGE OF HICKORY RIDGE
SECTION 2 AREA 1
THE HOWARD RESEARCH AND DEVELOPMENT CORP.
LIBER 463 FOLIO 196

SEE M.S.H.A.
PLAT NO. 37696

FINAL DEVELOPMENT PLAN CRITERIA
PHASE 193-A-1

THE AREA INCLUDED WITHIN THIS FINAL DEVELOPMENT
PLAN PHASE IS APPLICABLE TO BROKEN LAND
PARKWAY WEST

RIGHT-OF-WAY AREAS

ALL OF THE LAND WITHIN THIS FINAL DEVELOPMENT PLAN PHASE
SHALL BE USED AS THE RIGHT-OF-WAY FOR A PORTION OF BROKEN
LAND PARKWAY WEST AND MAY BE USED FOR ROADWAY AND UTILITY
EASEMENT PURPOSES. FOR THE PURPOSE OF LAND USE ALLOCATIONS
UNDER THE PROVISIONS OF SECTION 122-A-8 OF THE HOWARD COUNTY
ZONING REGULATIONS, SUCH LAND SHALL BE CLASSIFIED AS
EMPLOYMENT CENTER, COMMERCIAL USE, AS INDICATED ON THE MAP
CONTAINED IN THIS FINAL DEVELOPMENT PLAN PHASE. VEHICULAR
INGRESS AND EGRESS WILL BE RESTRICTED EXCEPT AT POINTS OF
ACCESS APPROVED BY THE DEPT. OF PLANNING AND ZONING.

NOTE: THIS PLAT IS INTENDED TO SUPERSEDE FINAL DEVELOPMENT PLAN PHASE 193-A
SHEET 1 OF 1 RECORDED AMONG THE LAND RECORDS OF HOWARD COUNTY, MD. AS PLAT 3054A-T124.

PREPARED IN ACCORDANCE WITH
THE ZONING REGULATIONS OF
HOWARD COUNTY ADOPTED
AUGUST 2, 1985

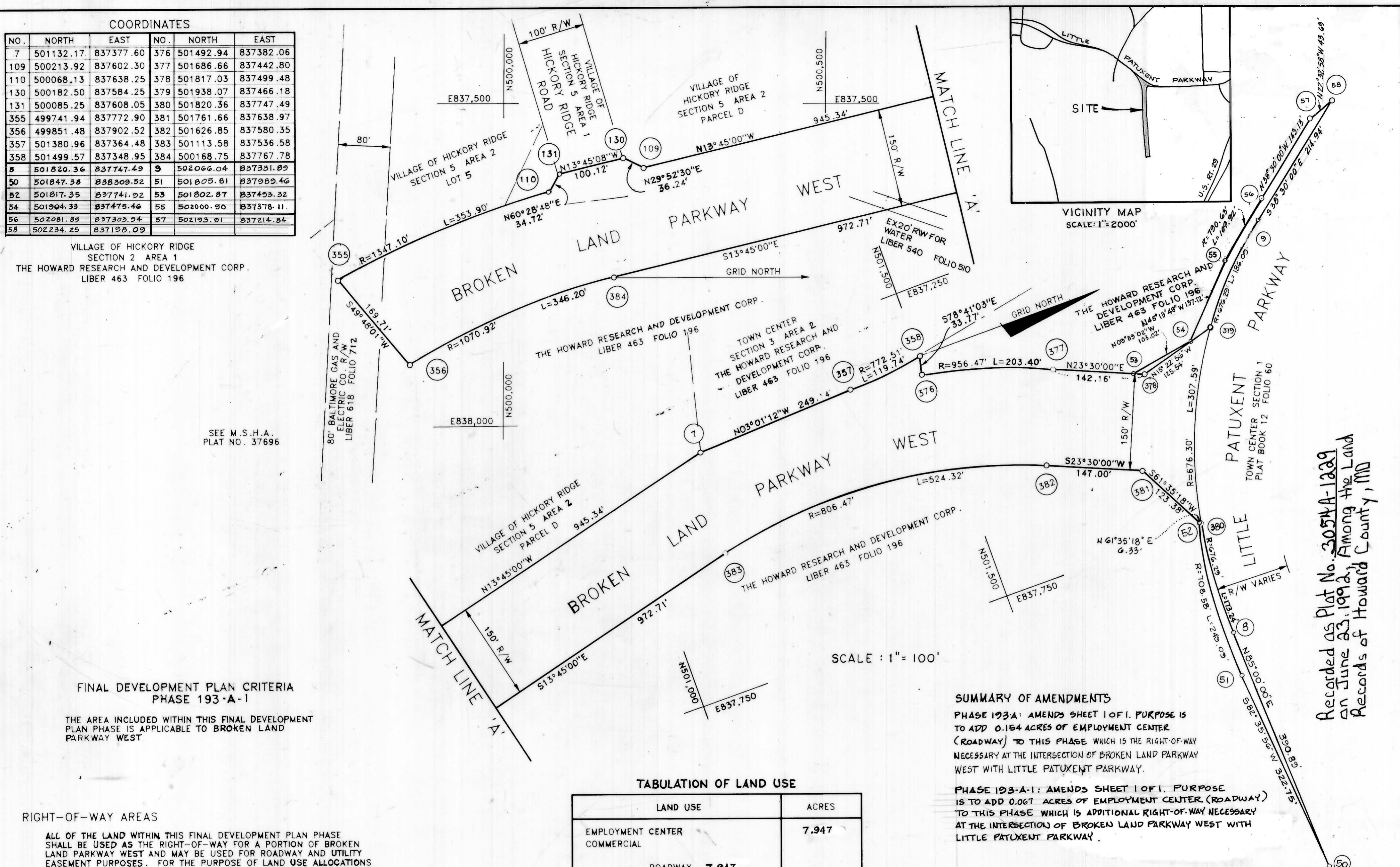


BOARD OF COUNTY COMM. B.C.C. CASE 412 RESOLUTION APP. AUGUST 10, 1965.
AMENDED B.C.C. CASE 507 RESOLUTION APPROVED NOVEMBER 4, 1968.
AMENDED Z.B. CASE 606 RESOLUTION APPROVED NOVEMBER 22, 1972.
AMENDED Z.B. CASE 644 RESOLUTION APPROVED JANUARY 7, 1974.
AMENDED Z.B. CASE 693 RESOLUTION APPROVED DECEMBER 20, 1976.
AMENDED Z.B. CASE 817 RESOLUTION APPROVED SEPTEMBER 9, 1980.
AMENDED Z.B. CASE 818 RESOLUTION APPROVED MARCH 17, 1982.

HOWARD COUNTY PLANNING BOARD

James S. Butler 6/10/92 *Kay B. Partridge* 6/9/92
H.C.P.B. Exec. Secretary Date H.C.P.B. Chairman Date

193-A	7-25-91	3054A-1194
193	9-16-85	3054A-759
PHASE OR AMENDMENT	DATE	PLAT BOOK FOLIO
	RECORDED	



SCALE: 1" = 100'

TABULATION OF LAND USE

LAND USE	ACRES
EMPLOYMENT CENTER COMMERCIAL	7.947
ROADWAY 7.947	
TOTAL	7.947

SUMMARY OF AMENDMENTS

PHASE 193-A: AMENDS SHEET 1 OF 1. PURPOSE IS
TO ADD 0.154 ACRES OF EMPLOYMENT CENTER
(ROADWAY) TO THIS PHASE WHICH IS THE RIGHT-OF-WAY
NECESSARY AT THE INTERSECTION OF BROKEN LAND PARKWAY
WEST WITH LITTLE PATUXENT PARKWAY.

PHASE 193-A-1: AMENDS SHEET 1 OF 1. PURPOSE
IS TO ADD 0.067 ACRES OF EMPLOYMENT CENTER (ROADWAY)
TO THIS PHASE WHICH IS ADDITIONAL RIGHT-OF-WAY NECESSARY
AT THE INTERSECTION OF BROKEN LAND PARKWAY WEST WITH
LITTLE PATUXENT PARKWAY.

BROKEN LAND PARKWAY WEST

PETITIONER AND OWNER
THE HOWARD RESEARCH AND DEVELOPMENT CORPORATION
COLUMBIA MARYLAND
21044

COLUMBIA
AMENDED

FINAL DEVELOPMENT PLAN PHASE 193-A-1
5TH ELECTION DISTRICT HOWARD COUNTY, MD.

Recorded as Plat No. 3054A-1229
on June 23, 1992. Among the Land
Records of Howard County, MD