

SUMMARY OF AMENDMENTS

Phase 136 Part II-A: Revise sheets 1 and 2 of 2. Purpose is to correct the property line along Martin Road to conform with State Highway Administration Right-of-Way Plat No. 37799.

The Final Development Plan Criteria for this Phase (136 Part II-A) has been recorded in Phase 136 Part 8, Plat Book 20, Folio 238 with the following exceptions:

- A. Lot 315 referred to in Paragraph 7E-2 is now Lot 330I.
- B. Lot 314 referred to in Paragraph 7E-7 is now Lot 329.

RECORDED PLAT BOOK 3373 FOLIO
ON 1/16 1976 AMONG THE LAND RECORDS OF
HOWARD COUNTY, MD.

VILLAGE OF HICKORY RIDGE
SECTION 1 AREA 2

PETITIONER AND OWNER

THE HOWARD RESEARCH AND DEVELOPMENT CORPORATION

COLUMBIA, MARYLAND 21044

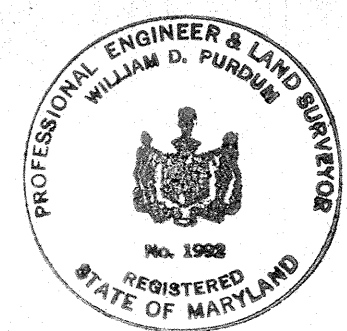
COLUMBIA

FINAL DEVELOPMENT PLAN PHASE 136 - PART II-A
5TH ELECTION DISTRICT HOWARD COUNTY, MD.

SCALE 1"=400' SHEET 1 OF 2

PREPARED AS TO SHEETS 1 TO 2
IN ACCORDANCE WITH THE ZONING REGULATIONS
OF HOWARD COUNTY
ADOPTED MAY 16, 1961 AND AS
AMENDED MAY 27, 1965

William D. Purdum
LAND SURVEYOR'S SIGNATURE REG. No. 1992



BOARD OF COUNTY COMM. B.C.C. CASE 412
RESOLUTION APPROVED AUGUST 10, 1965
AMENDED B.C.C. CASE 507 RESOLUTION APPROVED NOVEMBER 4, 1968
AMENDED B.C.C. CASE 606 RESOLUTION APPROVED NOVEMBER 22, 1972
AMENDED B.C.C. CASE 644 RESOLUTION APPROVED JANUARY 7, 1974

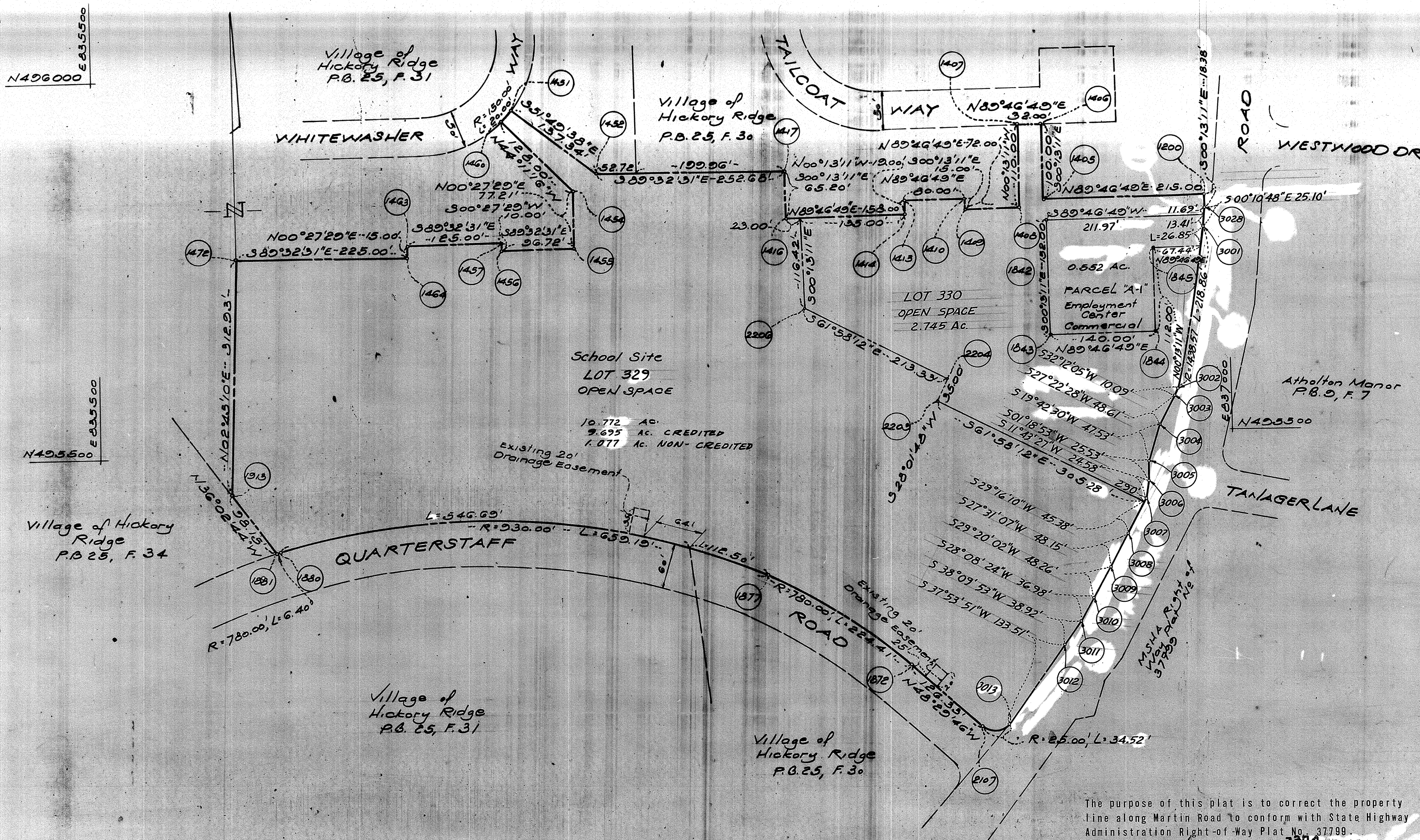
HOWARD COUNTY PLANNING BOARD

Roman D. Harvath 1-14-76 *William D. Purdum* 1/14/76
H.C.P.B. EXEC. SECY. DATE H.C.P.B. CHAIRMAN DATE

| | | | |
|--------------------|---------|-----------|---------|
| 136 Part II-A | | | |
| 136 Part II | 3/28/74 | 20 | 286-287 |
| Phase or Amendment | Date | Plat Book | Folio |
| Recorded | | | |

COORDINATES

| No | NORTH | EAST |
|------|-----------|-----------|
| 1200 | 495815.63 | 836971.95 |
| 1405 | 495814.81 | 836756.95 |
| 1406 | 495914.80 | 836756.57 |
| 1407 | 495914.68 | 836724.57 |
| 1408 | 495804.68 | 836724.99 |
| 1409 | 495804.41 | 836652.99 |
| 1410 | 495819.41 | 836652.93 |
| 1413 | 495810.10 | 836572.93 |
| 1414 | 495800.10 | 836573.01 |
| 1416 | 495799.40 | 836415.01 |
| 1417 | 495864.70 | 836414.76 |
| 1451 | 495951.60 | 836054.12 |
| 1452 | 495866.72 | 836162.05 |
| 1454 | 495844.96 | 836129.96 |
| 1455 | 495767.75 | 836129.35 |
| 1456 | 495768.52 | 836032.62 |
| 1457 | 495778.52 | 836032.70 |
| 1460 | 495936.74 | 836040.74 |
| 1463 | 495779.52 | 835907.71 |
| 1464 | 495764.52 | 835907.59 |
| 1472 | 495766.32 | 835682.60 |
| 1872 | 495200.44 | 836561.77 |
| 1880 | 495376.14 | 835731.48 |
| 1881 | 495374.40 | 835725.32 |
| 1913 | 495453.75 | 835667.57 |
| 2107 | 495116.72 | 836656.39 |
| 1842 | 495724.81 | 836752.85 |
| 1843 | 495632.81 | 836752.43 |
| 1844 | 495633.35 | 836899.43 |
| 1845 | 495745.35 | 836899.00 |
| 2206 | 495603.17 | 836438.45 |
| 2203 | 495552.02 | 836610.31 |
| 2204 | 495582.92 | 836626.76 |
| 3001 | 495722.29 | 836969.44 |
| 3002 | 495557.13 | 836930.54 |
| 3003 | 495548.59 | 836925.16 |
| 3004 | 495505.42 | 836902.81 |
| 3005 | 495460.68 | 836886.78 |
| 3006 | 495435.16 | 836886.20 |
| 3007 | 495411.08 | 836881.20 |
| 3008 | 495368.97 | 836857.60 |
| 3009 | 495326.27 | 836835.35 |
| 3010 | 495284.20 | 836811.71 |
| 3011 | 495251.59 | 836794.27 |
| 3012 | 495220.99 | 836770.22 |
| 3013 | 495115.64 | 836668.21 |
| 3028 | 495797.25 | 836972.02 |



School Site
 LOT 329
 OPEN SPACE
 10.772 AC.
 9.695 AC. CREDITED
 1.077 AC. NON-CREDITED

LOT 330
 OPEN SPACE
 2.745 AC.

The purpose of this plat is to correct the property line along Martin Road to conform with State Highway Administration Right-of-Way Plat No. 37799.
 RECORDED PLAT BOOK 3374 FOLIO _____
 ON 1/16 1976 AMONG THE LAND RECORDS OF HOWARD COUNTY, MD.

TABULATION OF LAND USE

| LAND USE | ACRES |
|------------------------------|---------------|
| EMPLOYMENT CENTER COMMERCIAL | 0.552 |
| OPEN SPACE CREDITED | 12.440 |
| NON-CREDITED | 1.077 |
| TOTAL | 14.069 |

NOTE:
 FDP CRITERIA RECORDED IN PHASE 136 PART I PLAT BOOK 20 FOLIO 238

VILLAGE OF HICKORY RIDGE
 SECTION 1 AREA 2
 PETITIONER AND OWNER
 THE HOWARD RESEARCH AND DEVELOPMENT CORPORATION
 COLUMBIA, MARYLAND 21044

COLUMBIA

FINAL DEVELOPMENT PLAN PHASE 136 PART II-A
 5th ELECTION DISTRICT HOWARD COUNTY, MD.
 SCALE 1"=100'
 SHEET 2 OF 2

DRWN. BY: CHKD. BY: FDP-136 JA