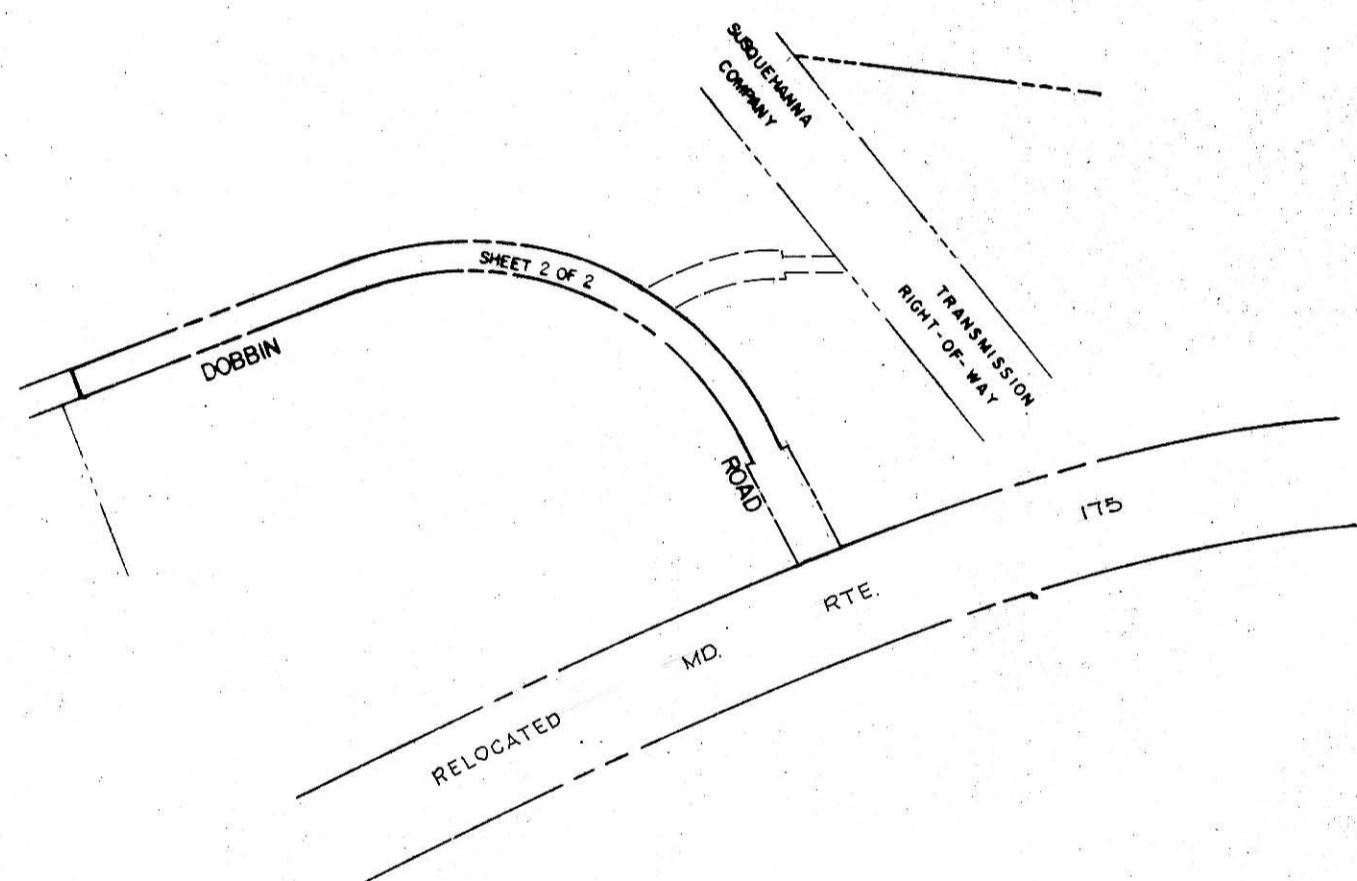


VICINITY MAP
SCALE - 1" = 2000'



NOTES:

1. The Purpose of this plat is to supercede and amend Final Development Plan Phase 134 recorded in P.B. 20, F. 227 & 228 on May 18, 1973, by the elimination of "Proposed Old Montgomery Road" as shown herein.
2. The horizontal alignment of Dobbin Road from Sta. 51+55.68 to Sta. 75+63.55 is not affected by this amendment.

RECORDED PLAT BOOK 28 FOLIO 60
ON 5/30 1974 AMONG THE LAND RECORDS OF
HOWARD COUNTY, MD.

RECORDED PLAT BOOK
AMONG THE LAND RECORDS OF
HOWARD COUNTY, MD.
DOBBIN ROAD
FROM RELOCATED MD. ROUTE 175
TO A POINT 2388'± SOUTH

PETITIONER AND OWNER

COLUMBIA INDUSTRIAL DEVELOPMENT CORPORATION
COLUMBIA, MARYLAND 21044

COLUMBIA

FINAL DEVELOPMENT PLAN PHASE 134-A
6TH ELECTION DISTRICT HOWARD COUNTY, MD.
SCALE 1" = 400' MAY 21, 1974 SHEET 1 OF 2

PREPARED AS TO SHEETS 1 TO 2
IN ACCORDANCE WITH THE ZONING REGULATIONS
OF HOWARD COUNTY
ADOPTED MAY 16, 1961 AND AS
AMENDED MAY 27, 1965



Guy Della-Rocca 8714
PROFESSIONAL LAND SURVEYOR

BOARD OF COUNTY COMM. B.C.C. CASE 412
AMENDED B.C.C. CASE 644 RESOLUTION APPROVED JAN. 7, 1974
RESOLUTION APPROVED AUGUST 10, 1965.
AMENDED B.C.C. CASE 507 RESOLUTION APPROVED: 11-4-68
AMENDED B.C.C. CASE 606 RESOLUTION APPROVED: 11-22-72.

HOWARD COUNTY PLANNING BOARD
Thomas J. Harris 529-74 *William P. Beardsley* 5/22/74
H.C.P.B. EXEC. SECRETARY DATE H.C.P.B. CHAIRMAN DATE

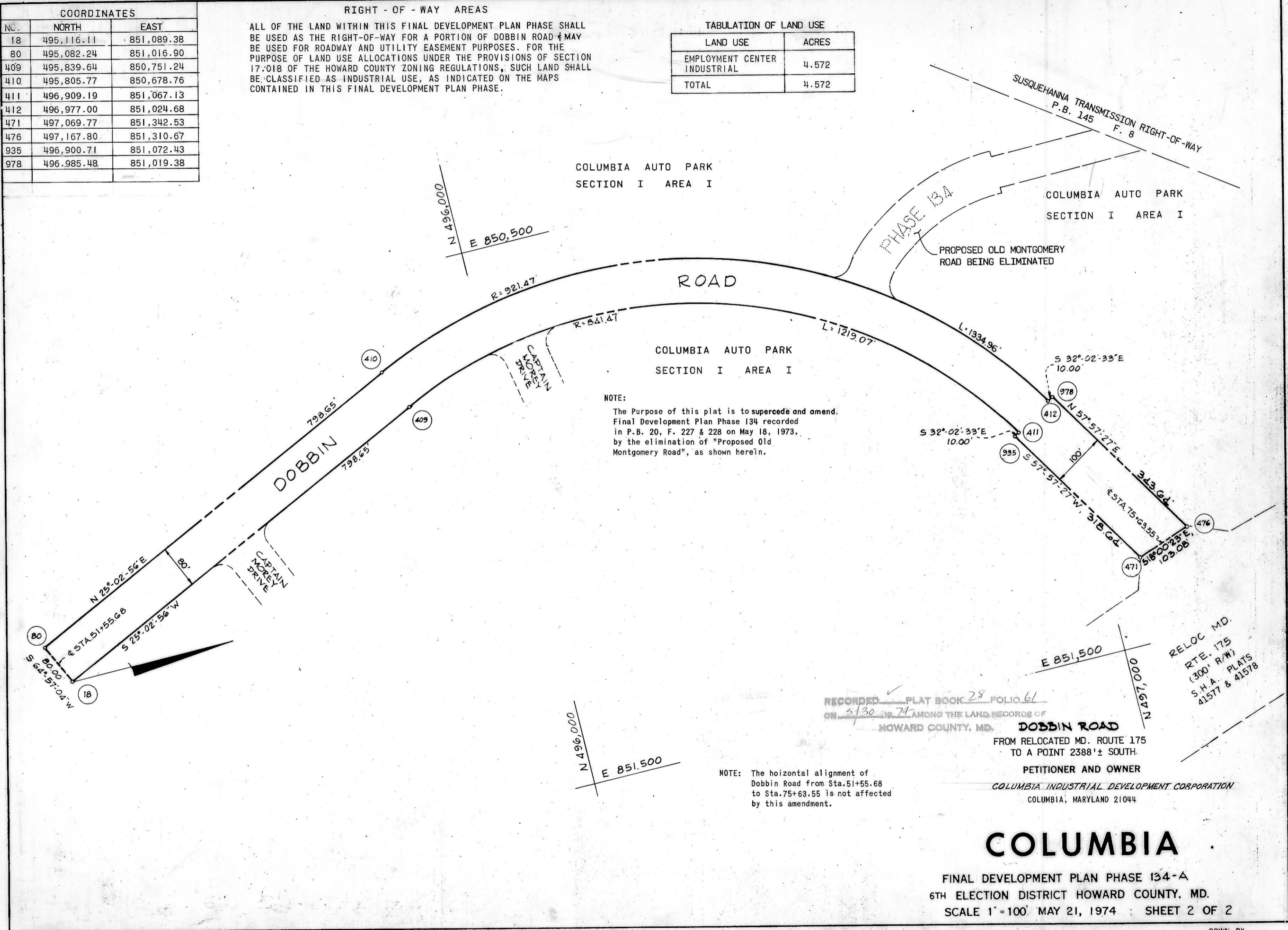
COORDINATES		
NO.	NORTH	EAST
18	495,116.11	851,089.38
80	495,082.24	851,016.90
409	495,839.64	850,751.24
410	495,805.77	850,678.76
411	496,909.19	851,067.13
412	496,977.00	851,024.68
471	497,069.77	851,342.53
476	497,167.80	851,310.67
935	496,900.71	851,072.43
978	496,985.48	851,019.38

RIGHT - OF - WAY AREAS

ALL OF THE LAND WITHIN THIS FINAL DEVELOPMENT PLAN PHASE SHALL BE USED AS THE RIGHT-OF-WAY FOR A PORTION OF DOBBIN ROAD & MAY BE USED FOR ROADWAY AND UTILITY EASEMENT PURPOSES. FOR THE PURPOSE OF LAND USE ALLOCATIONS UNDER THE PROVISIONS OF SECTION 17-018 OF THE HOWARD COUNTY ZONING REGULATIONS, SUCH LAND SHALL BE CLASSIFIED AS INDUSTRIAL USE, AS INDICATED ON THE MAPS CONTAINED IN THIS FINAL DEVELOPMENT PLAN PHASE.

TABULATION OF LAND USE

LAND USE	ACRES
EMPLOYMENT CENTER INDUSTRIAL	4.572
TOTAL	4.572



NOTE:
The Purpose of this plat is to supersede and amend Final Development Plan Phase 134 recorded in P.B. 20, F. 227 & 228 on May 18, 1973, by the elimination of "Proposed Old Montgomery Road", as shown herein.

NOTE: The horizontal alignment of Dobbin Road from Sta. 51+55.68 to Sta. 75+63.55 is not affected by this amendment.

RECORDED PLAT BOOK 28 FOLIO 61
ON 5/30 1974 AMONG THE LAND RECORDS OF
HOWARD COUNTY, MD.

DOBBIN ROAD
FROM RELOCATED MD. ROUTE 175
TO A POINT 2388'± SOUTH.
PETITIONER AND OWNER
COLUMBIA INDUSTRIAL DEVELOPMENT CORPORATION
COLUMBIA, MARYLAND 21044

COLUMBIA

FINAL DEVELOPMENT PLAN PHASE 134-A
6TH ELECTION DISTRICT HOWARD COUNTY, MD.
SCALE 1"=100' MAY 21, 1974 SHEET 2 OF 2

FDP-134-A DRWN BY
CHKD BY