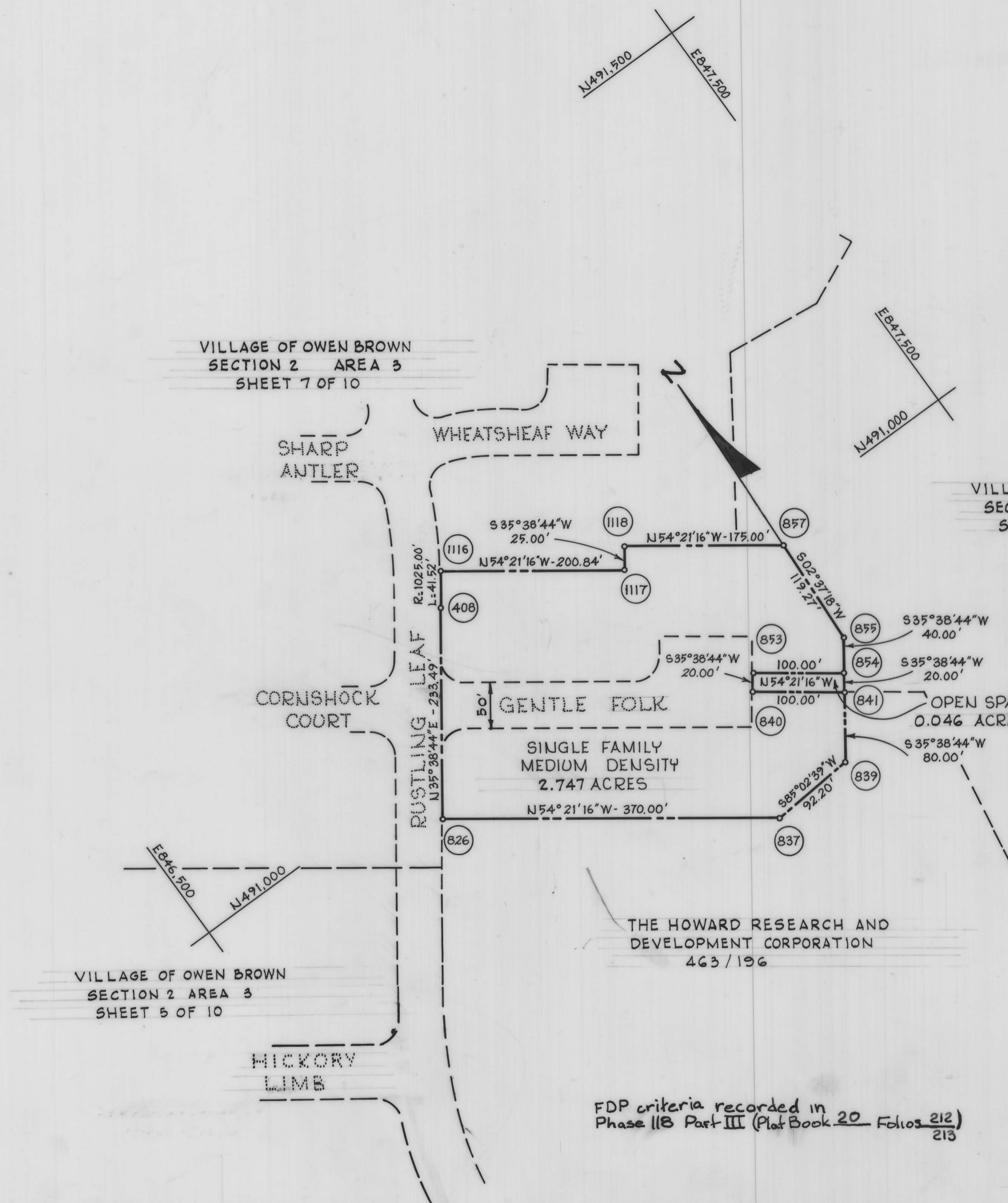


COORDINATES

No.	NORTH	EAST
1116	491,173.59	846,945.68
1117	491,056.54	847,108.89
1118	491,076.86	847,123.46
857	490,974.87	847,265.67
855	490,855.72	847,260.21
854	490,823.22	847,236.90
853	490,881.50	847,155.64
840	490,865.24	847,143.98
841	490,806.97	847,225.25
839	490,741.95	847,178.63
837	490,733.99	847,086.78
826	490,949.61	846,786.10
408	491,139.36	846,922.17

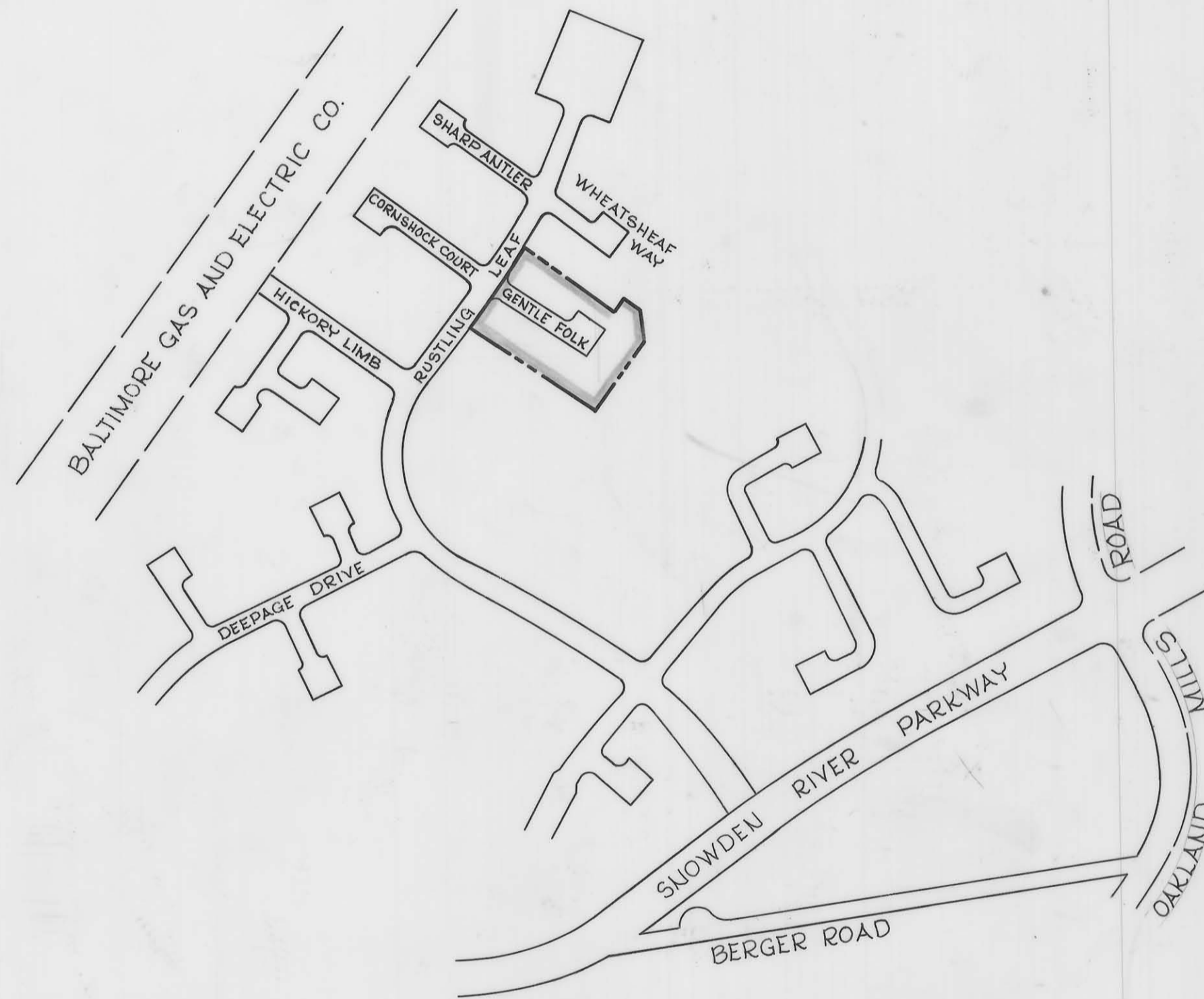


RECORDED PLAT BOOK 20 FOLIO 258  
 ON MAY 31 1973 AMONG THE LAND RECORDS OF  
 HOWARD COUNTY, MD.

VILLAGE OF OWEN BROWN  
 SECTION 2 AREA 3  
 PETITIONER AND OWNER  
 THE HOWARD RESEARCH AND DEVELOPMENT CORPORATION  
 COLUMBIA, MARYLAND 21044

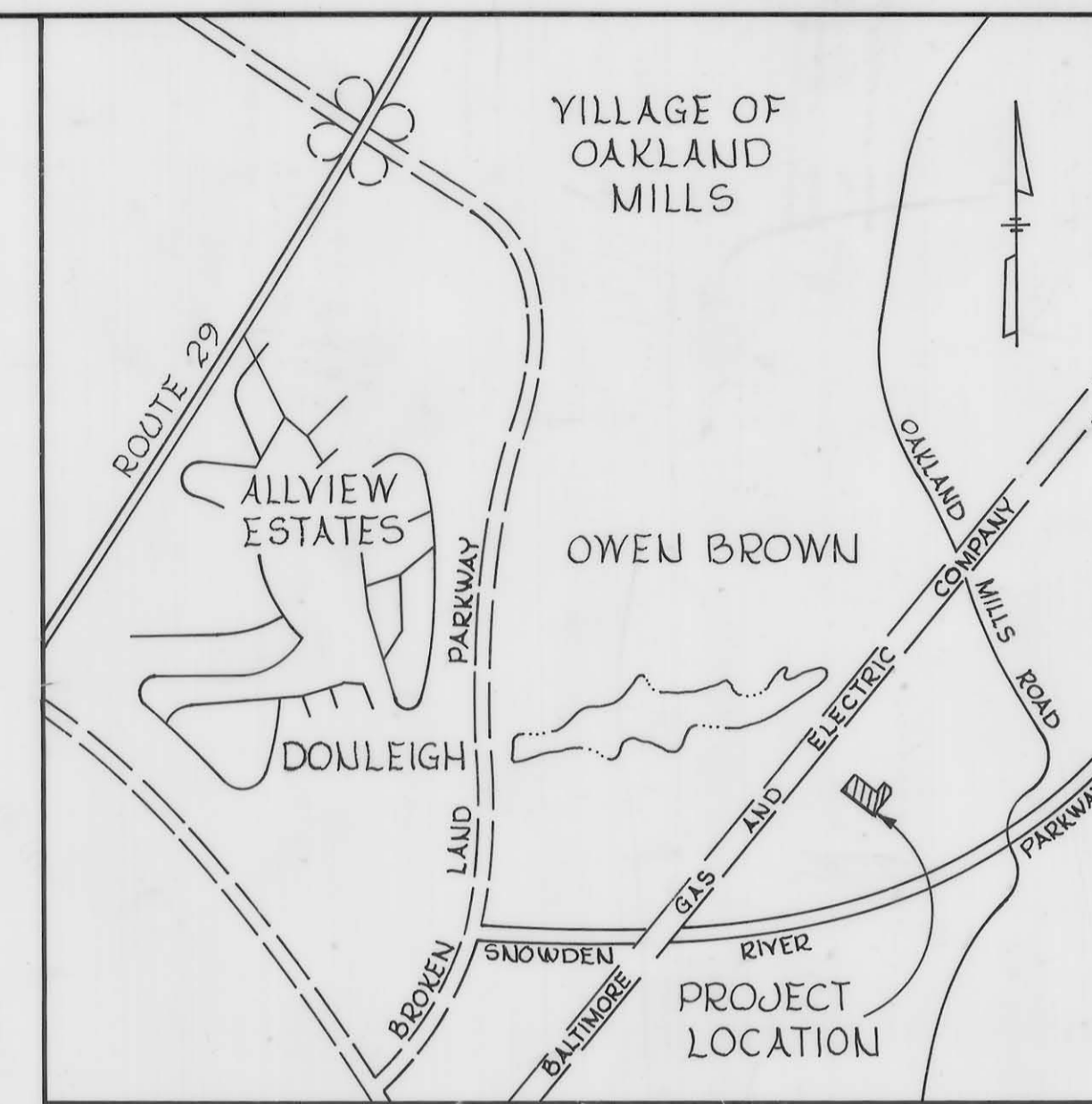
COLUMBIA

FINAL DEVELOPMENT PLAN PHASE 118 PART IV  
 6<sup>TH</sup> ELECTION DISTRICT HOWARD COUNTY, MD.  
 SCALE 1"=100' May 30, 1973 SHEET 2 OF 2



**KEY MAP**

Scale: 1" = 400'



**VICINITY MAP**

Scale 1" = 3000'

RECORDED PLAT BOOK 20 FOLIO 257  
 ON MAY 31 1973 AMONG THE LAND RECORDS OF  
 HOWARD COUNTY, MD.

VILLAGE OF OWEN BROWN  
 SECTION 2, AREA 3  
 PETITIONER AND OWNER  
 THE HOWARD RESEARCH AND DEVELOPMENT CORPORATION  
 COLUMBIA, MARYLAND 21044

**COLUMBIA**

FINAL DEVELOPMENT PLAN PHASE 118 PART IV  
 6<sup>th</sup> ELECTION DISTRICT HOWARD COUNTY, MD.  
 SCALE 1" = 400' May 30, 1973 SHEET 1 OF 2

PREPARED AS TO SHEETS 1 TO 2  
 IN ACCORDANCE WITH THE ZONING REGULATIONS  
 OF HOWARD COUNTY  
 ADOPTED MAY 16, 1961 AND AS  
 AMENDED MAY 27, 1965

*Kenneth G. Melrod*  
 LAND SURVEYOR'S SIGNATURE



AMENDED BOARD OF COUNTY COMM. B.C.C. CASE 606  
 RESOLUTION APPROVED NOVEMBER 22, 1972

AMENDED BOARD OF COUNTY COMM. B.C.C. CASE 507  
 RESOLUTION APPROVED NOVEMBER 4, 1968

BOARD OF COUNTY COMM. B. C. C. CASE 412  
 RESOLUTION APPROVED AUGUST 10, 1965

HOWARD COUNTY PLANNING BOARD

*Thomas L. Harris* 5-31-73  
 H.C.P.B. EXECUTIVE SECRETARY DATE  
*William P. Bunch* 5/21/73  
 H. C. P. B. CHAIRMAN DATE