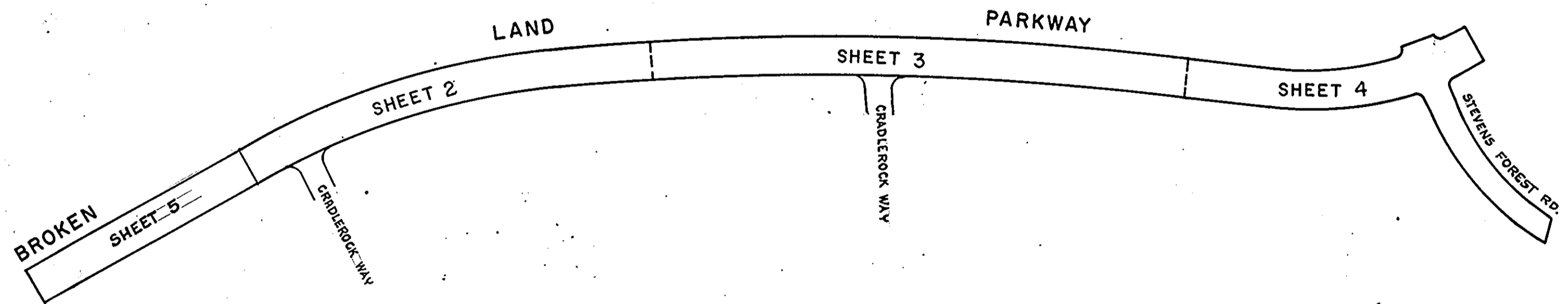


VICINITY MAP
SCALE: 3/4" = 1 MILE



SUMMARY OF AMENDMENTS

114-A ADDS 2.817 ACRES OF SINGLE FAMILY MEDIUM DENSITY TO PHASE FOR BROKEN LAND PARKWAY RIGHT-OF-WAY SHOWN ON SHEET 5.



NOTE:
THIS AMENDED FINAL DEVELOPMENT PLAN SUPERSEDES PHASE 114 RECORDED AMONG THE LAND RECORDS OF HOWARD COUNTY, MARYLAND IN PLAT BOOK 20 FOLIO 137 ON MAY 26, 1972.

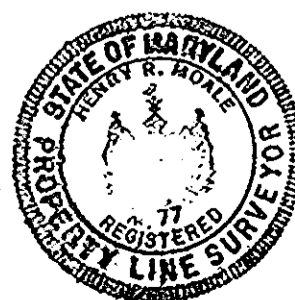
RECORDED PLAT 3054A-345
OCT. 5-28, 1981 AMONG THE LAND RECORDS OF HOWARD COUNTY, MD.
BROKEN LAND PARKWAY

PETITIONER AND OWNER
THE HOWARD RESEARCH AND DEVELOPMENT CORPORATION
COLUMBIA, MARYLAND 21043

COLUMBIA
AMENDED
FINAL DEVELOPMENT PLAN PHASE 114-A
6TH ELECTION DISTRICT HOWARD COUNTY, MD.
SCALE 1" = 400'
SHEET 1 OF 5

PREPARED AS TO SHEETS 1 TO 5
IN ACCORDANCE WITH THE ZONING REGULATIONS
OF HOWARD COUNTY
ADOPTED OCTOBER 3, 1977

H. Richard Wolfe
LAND SURVEYOR'S SIGNATURE

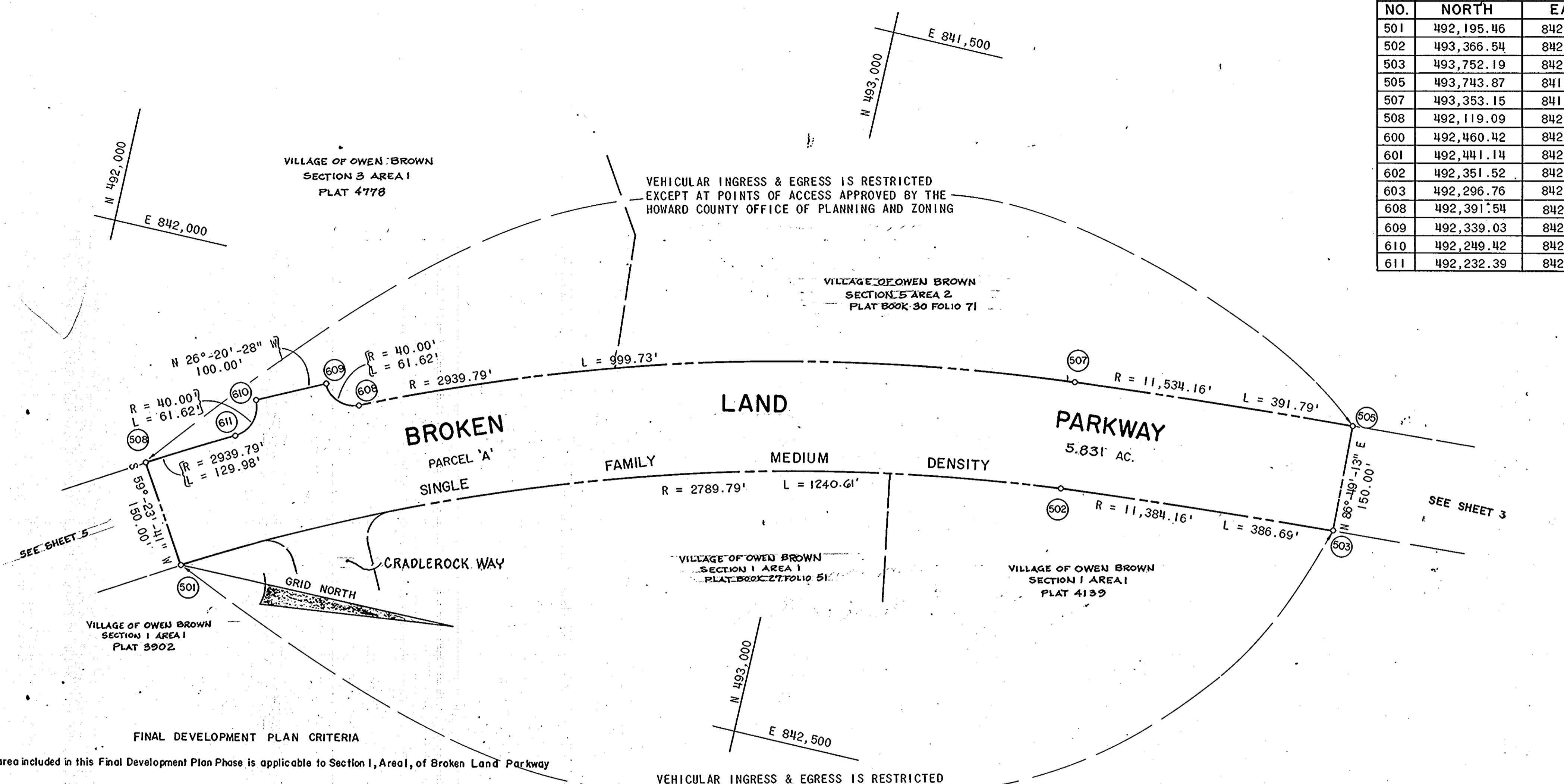


BOARD OF COUNTY COMM. B.C.C. CASE 412 RESOLUTION APPROVED AUGUST 10, 1965.
AMENDED B.C.C. CASE 507 RESOLUTION APPROVED NOVEMBER 4, 1968
AMENDED Z.B. CASE 606 RESOLUTION APPROVED NOVEMBER 22, 1972
AMENDED Z.B. CASE 644 RESOLUTION APPROVED JANUARY 7, 1974
AMENDED Z.B. CASE 693 RESOLUTION APPROVED DECEMBER 20, 1976

HOWARD COUNTY PLANNING BOARD
Thomas G. Harris 5-21-81 H.C.P.B. EXECUTIVE SECRETARY
Helen Reuther 5/21/81 H.C.P.B. CHAIRMAN

114-A		
114	5-26-72	PLAT BOOK 20 FOLIOS 137 TO 140
	DATE	PLAT
PHASE	RECORDATION	

COORDINATES		
NO.	NORTH	EAST
501	492,195.46	842,444.66
502	493,366.54	842,067.19
503	493,752.19	842,039.19
505	493,743.87	841,889.42
507	493,353.15	841,917.79
508	492,119.09	842,315.56
600	492,460.42	842,306.53
601	492,441.14	842,360.68
602	492,351.52	842,405.05
603	492,296.76	842,387.56
608	492,391.54	842,172.08
609	492,339.03	842,154.46
610	492,249.42	842,198.83
611	492,232.39	842,251.88



FINAL DEVELOPMENT PLAN CRITERIA

The area included in this Final Development Plan Phase is applicable to Section 1, Area 1, of Broken Land Parkway

All of the land within this Final Development Plan Phase shall be used as the right of way for a portion of Broken Land Parkway and Steven's Forest Road and may be used for roadway and utility easement purposes. For the purpose of land use allocations under the provisions of Section 119-A-9 of the Howard County Zoning Regulations, such land shall be classified as Single Family Medium Density use, as indicated on the maps contained in this Final Development Plan Phase.

Vehicular ingress and egress to Broken Land Parkway will be permitted only at points of access approved by the Howard County Office of Planning and Zoning.

TABULATION OF LAND USE IN ACRES

Land Use	Acres
S. F. M. D Roadway	21.709
Total	21.709

NOTE:
 THIS AMENDED FINAL DEVELOPMENT PLAN SUPERSEDES PHASE 114 RECORDED AMONG THE LAND RECORDS OF HOWARD COUNTY, MARYLAND IN PLAT BOOK 20 FOLIO 138 ON MAY 26, 1972.

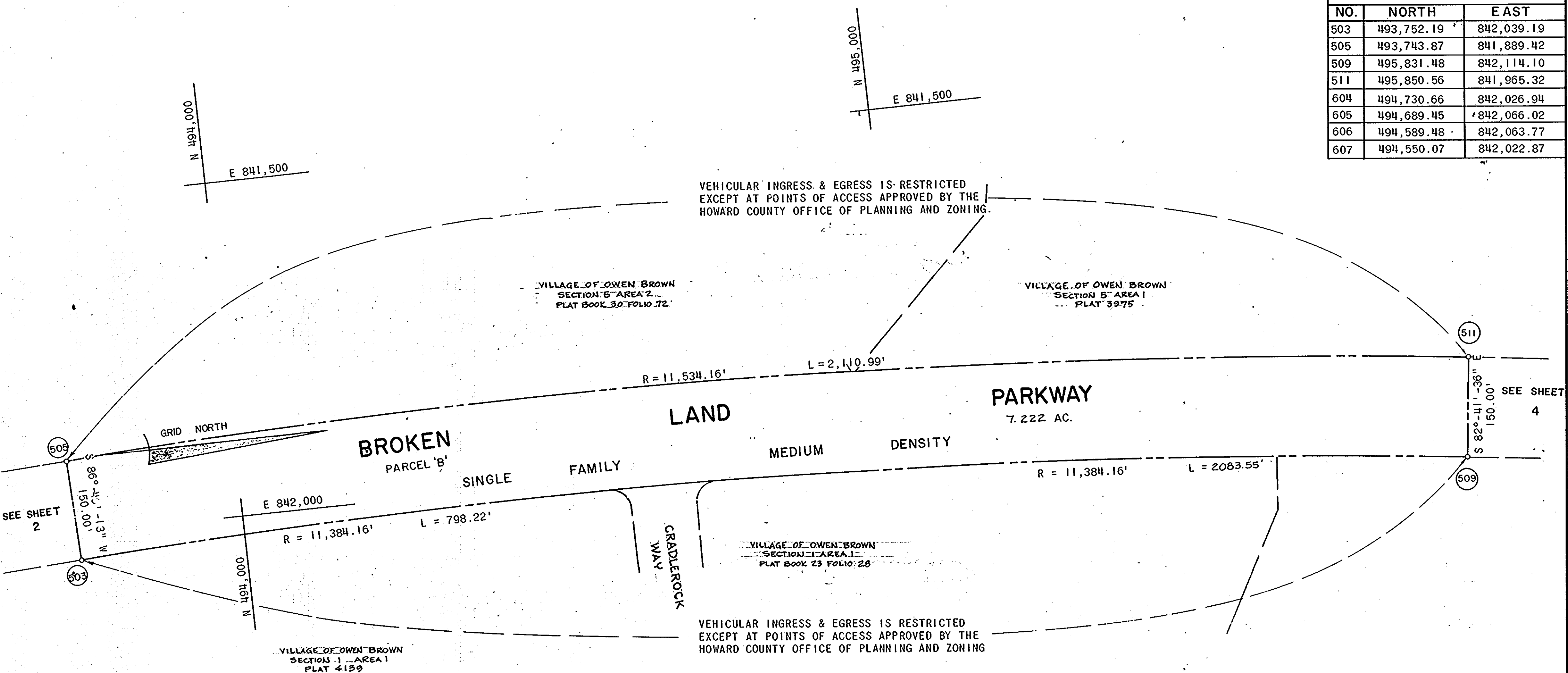
RECORDED PLAT 3054A-346
 ON 5-28 1981 AMONG THE LAND RECORDS OF HOWARD COUNTY, MD.

BROKEN LAND PARKWAY

PETITIONER AND OWNER
 THE HOWARD RESEARCH AND DEVELOPMENT CORPORATION
 COLUMBIA, MARYLAND 21043

COLUMBIA
 AMENDED
 FINAL DEVELOPMENT PLAN PHASE 114-A
 6TH ELECTION DISTRICT HOWARD COUNTY, MD.
 SCALE 1"=100' SHEET 2 OF 5

COORDINATES		
NO.	NORTH	EAST
503	493,752.19	842,039.19
505	493,743.87	841,889.42
509	495,831.48	842,114.10
511	495,850.56	841,965.32
604	494,730.66	842,026.94
605	494,689.45	842,066.02
606	494,589.48	842,063.77
607	494,550.07	842,022.87



RECORDED PLAT 3054A 347
 ON 5-28-81 AMONG THE LAND RECORDS
 HOWARD COUNTY, MD

BROKEN LAND PARKWAY

PETITIONER AND OWNER
 THE HOWARD RESEARCH AND DEVELOPMENT CORPORATION
 COLUMBIA, MARYLAND 21043

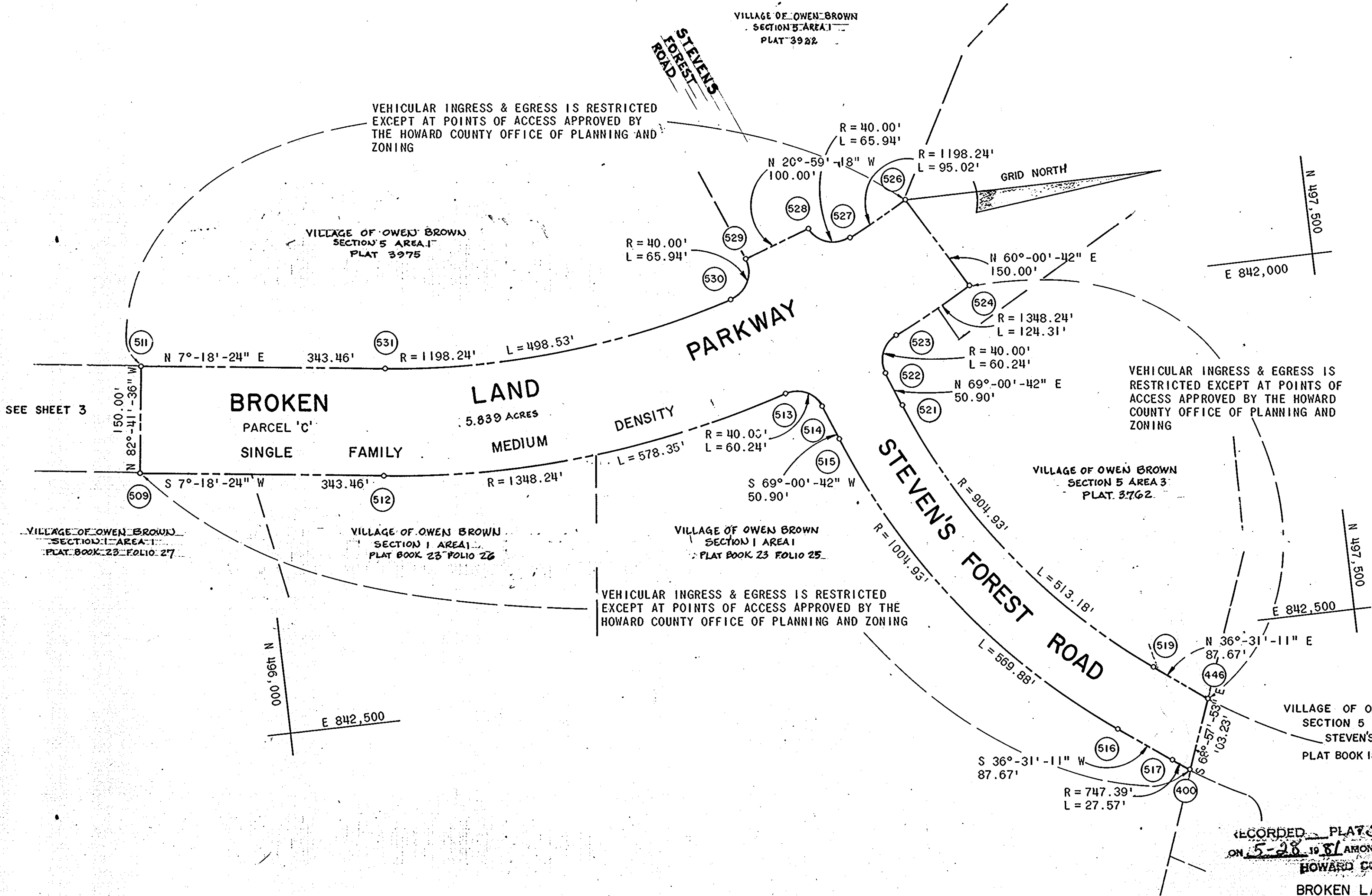
COLUMBIA

AMENDED
 FINAL DEVELOPMENT PLAN PHASE 114-A
 6TH ELECTION DISTRICT HOWARD COUNTY, MD.

SCALE 1" = 100' SHEET 3 OF 5

NOTE:
 THIS AMENDED FINAL DEVELOPMENT PLAN SUPERSEDES
 PHASE 114 RECORDED AMONG THE LAND RECORDS
 OF HOWARD COUNTY, MARYLAND IN PLAT BOOK 20 FOLIO 139
 ON MAY 26, 1972.

COORDINATES		
NO.	NORTH	EAST
509	495,831.48	842,114.10
511	495,850.56	841,965.33
512	496,172.15	842,157.78
513	496,743.90	842,107.94
514	496,793.13	842,131.81
515	496,811.36	842,179.33
516	497,151.58	842,627.00
517	497,222.04	842,679.17
400	497,244.49	842,695.16
446	497,281.55	842,598.80
519	497,211.09	842,546.63
521	496,904.73	842,143.51
522	496,886.49	842,095.99
523	496,907.12	842,045.32
524	497,017.50	841,988.24
526	496,942.53	841,858.32
527	496,858.44	841,902.50
528	496,803.90	841,880.71
529	496,710.54	841,916.52
530	496,684.58	841,969.19
531	496,191.23	842,009.00



VEHICULAR INGRESS & EGRESS IS RESTRICTED EXCEPT AT POINTS OF ACCESS APPROVED BY THE HOWARD COUNTY OFFICE OF PLANNING AND ZONING

VEHICULAR INGRESS & EGRESS IS RESTRICTED EXCEPT AT POINTS OF ACCESS APPROVED BY THE HOWARD COUNTY OFFICE OF PLANNING AND ZONING

RECORDED PLAT 3054A-348 ON 5-28-81 AMONG THE LAND RECORDS OF HOWARD COUNTY, MD.

PETITIONER AND OWNER
THE HOWARD RESEARCH AND DEVELOPMENT CORPORATION
COLUMBIA, MARYLAND 21043

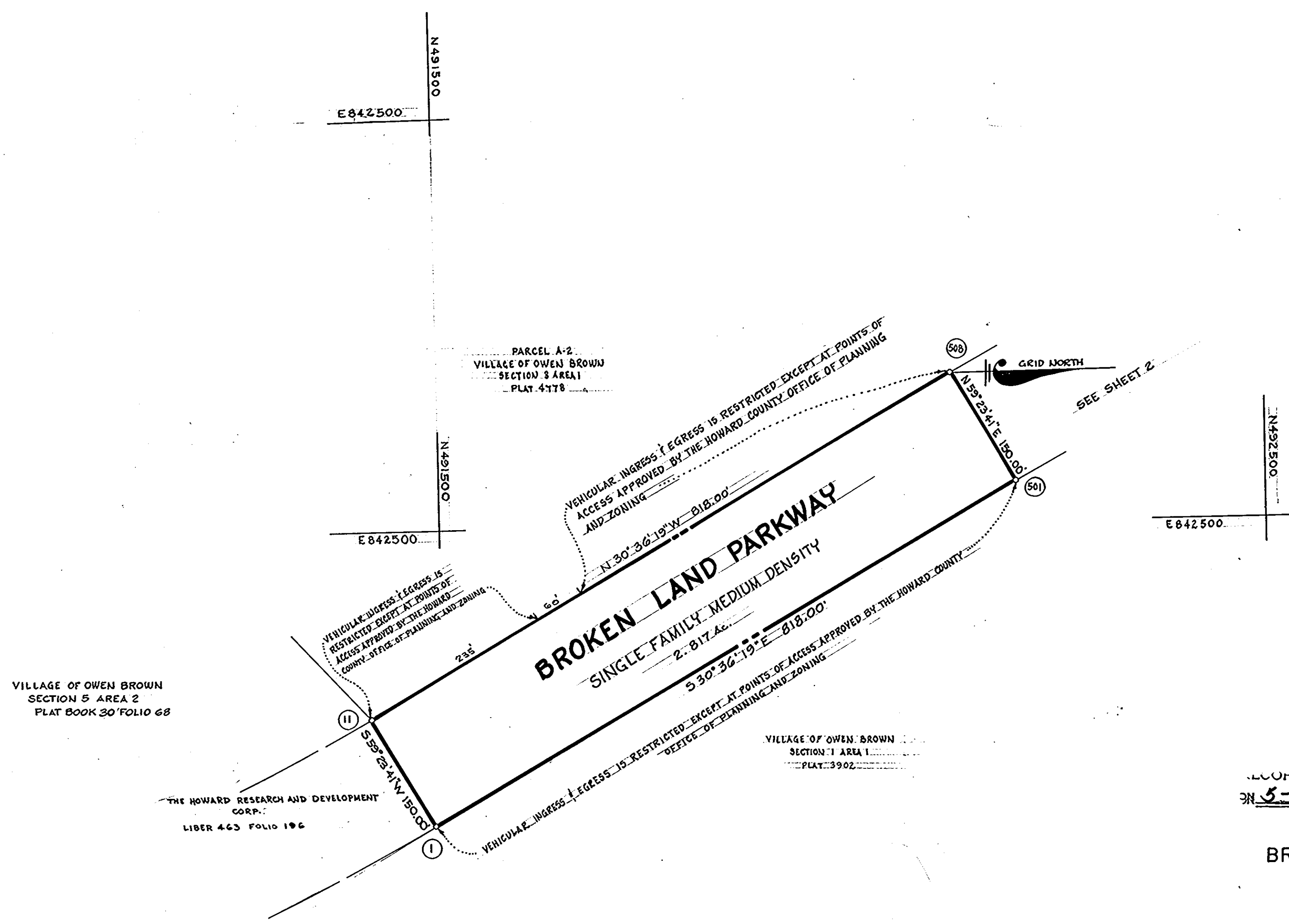
COLUMBIA

AMENDED
FINAL DEVELOPMENT PLAN PHASE 114-A
6TH ELECTION DISTRICT HOWARD COUNTY, MD.

SCALE 1" = 100' SHEET 4 OF 5

NOTE:
THIS AMENDED FINAL DEVELOPMENT PLAN SUPERSEDES
PHASE 114 RECORDED AMONG THE LAND RECORDS
OF HOWARD COUNTY, MARYLAND IN PLAT BOOK 20 FOLIO 140
ON MAY 26, 1972

COORDINATES		
NO.	NORTH	EAST
I	491491.41	842861.12
501	492195.46	842444.66
508	492119.09	842315.56
II	491415.04	842732.02



VILLAGE OF OWEN BROWN
SECTION 5 AREA 2
PLAT BOOK 30 FOLIO 68

THE HOWARD RESEARCH AND DEVELOPMENT
CORP.
LIBER 463 FOLIO 196

PARCEL A-2
VILLAGE OF OWEN BROWN
SECTION 3 AREA 1
PLAT 4178

VILLAGE OF OWEN BROWN
SECTION 1 AREA 1
PLAT 3902

RECORDED PLAT 3054A-349
ON 5-28 1981 AMONG THE LAND RECORDS OF
HOWARD COUNTY, MD

BROKEN LAND PARKWAY

PETITIONER AND OWNER
THE HOWARD RESEARCH AND DEVELOPMENT CORPORATION
COLUMBIA, MARYLAND 21043

COLUMBIA

AMENDED
FINAL DEVELOPMENT PLAN PHASE 114-A
6TH ELECTION DISTRICT HOWARD COUNTY, MD.

SCALE 1" = 100' SHEET 5 OF 5

NOTE:
THIS AMENDED FINAL DEVELOPMENT PLAN SUPERSEDES
PHASE 114 RECORDED AMONG THE LAND RECORDS
OF HOWARD COUNTY, MARYLAND IN PLAT BOOK 20 FOLIO 137 TO 140
ON MAY 26, 1972.