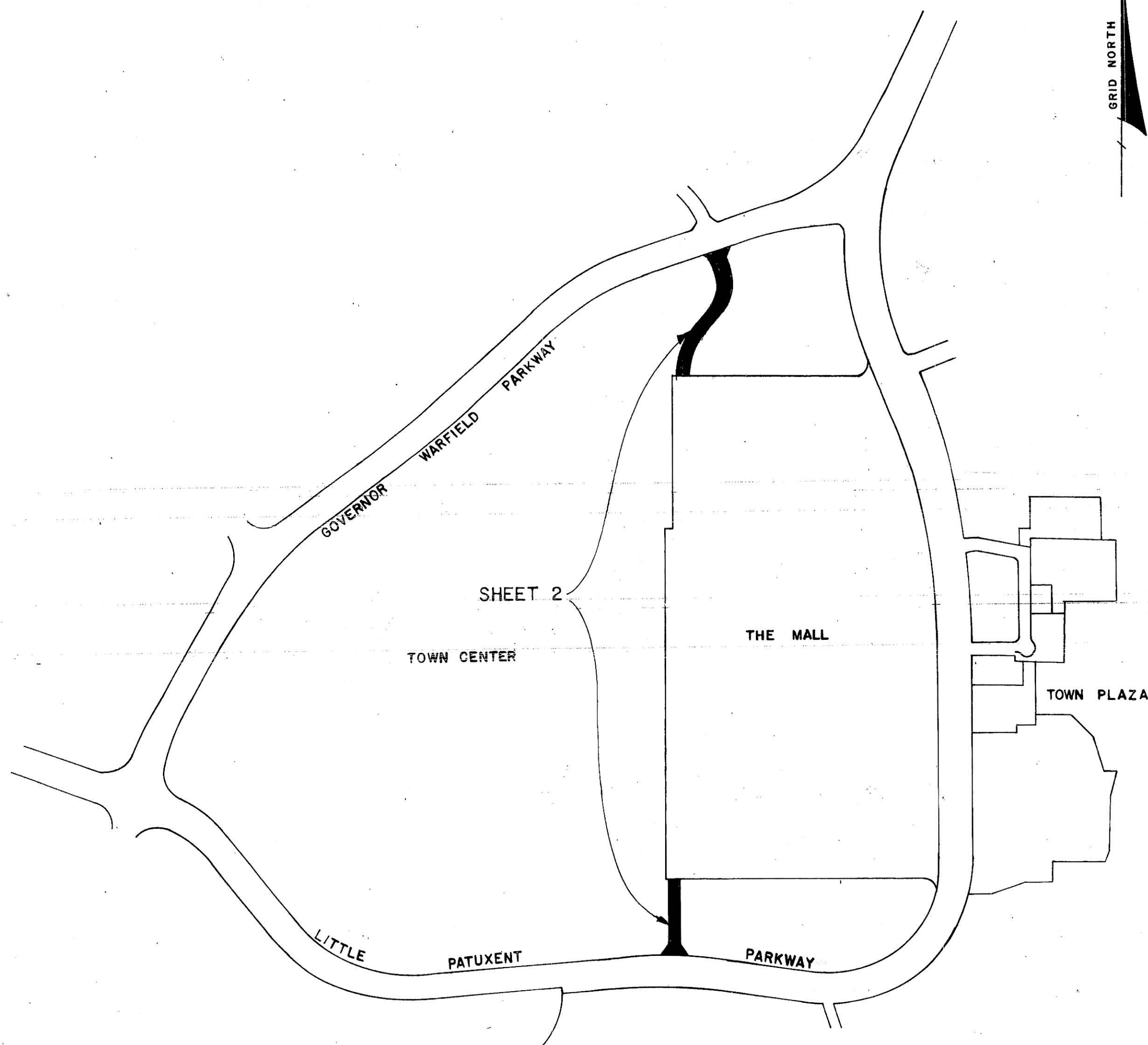


VICINITY MAP

SCALE 1" = 2000'



SUMMARY OF AMENDMENTS
 PHASE 101 A: AMENDS SHEET 2 OF 2. PURPOSE IS TO ADD 0.175 ACRES OF EMPLOYMENT CENTER COMMERCIAL (ROADWAY) TO THIS PHASE.

*HO CO GOVT
 PLAT# 3054-A-1617
 DATE RECORDED 4/30/97
 TOWN CENTER *lu**

NOTE: THIS AMENDED PLAT IS INTENDED TO SUPERSEDE FINAL DEVELOPMENT PLAN PHASE 101 RECORDED AMONG THE LAND RECORDS OF HOWARD CO., MD. AS PLAT BOOK 20 FOLIO 8

SECTION 2 AREA 2

PETITIONER AND OWNER
 THE HOWARD RESEARCH AND DEVELOPMENT CORPORATION

COLUMBIA, MD.
 21043

COLUMBIA
 AMENDED

FINAL DEVELOPMENT PLAN PHASE 101 A
 5TH ELECTION DISTRICT HOWARD COUNTY, MD.
 SCALE 1" = 400' SHEET 1 OF 2

BOARD OF COUNTY COMMISSIONERS CASE B.C.C. 412 RESOLUTION APPROVED AUGUST 10, 1965
 AMENDED B.C.C. CASE 507 RESOLUTION APPROVED NOVEMBER 4, 1968
 AMENDED Z.B. CASE 606 RESOLUTION APPROVED NOVEMBER 4, 1968
 AMENDED Z.B. CASE 644 RESOLUTION APPROVED JANUARY 7, 1974
 AMENDED Z.B. CASE 693 RESOLUTION APPROVED DECEMBER 20, 1976
 AMENDED Z.B. CASE 817 RESOLUTION APPROVED SEPTEMBER 9, 1986
 AMENDED Z.B. CASE 918 RESOLUTION APPROVED MARCH 17, 1992
 AMENDED Z.B. CASE 939 RESOLUTION APPROVED NOVEMBER 19, 1992
 AMENDED Z.B. CASE 969 RESOLUTION APPROVED OCTOBER 23, 1995

HOWARD COUNTY PLANNING BOARD

[Signature] 4/24/97 *[Signature]* 23.4.97
 H.C.P.B. EXEC. SECRETARY DATE H.C.P.B. CHAIRMAN DATE

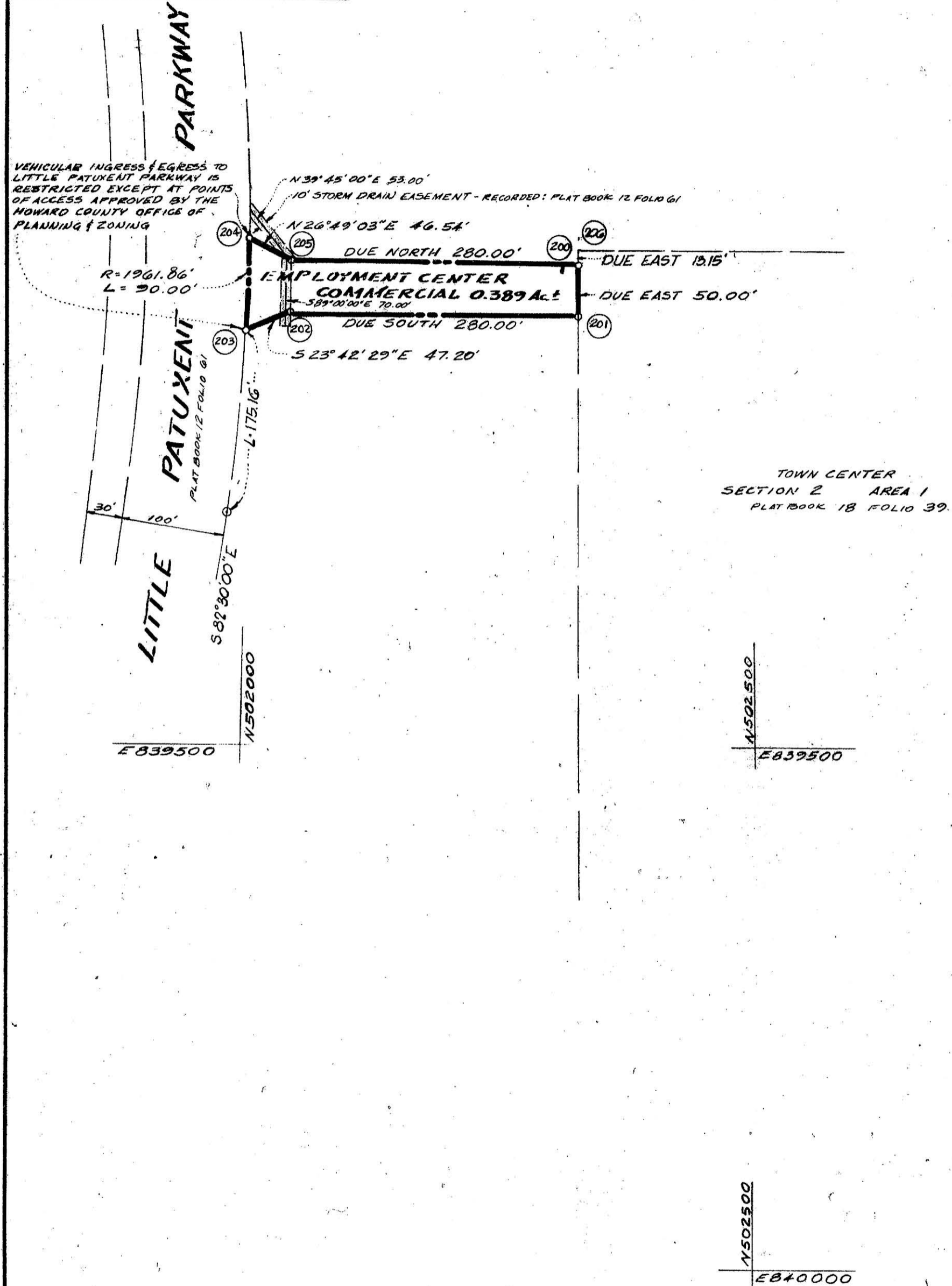
224	1-22-97	3054A-1588-90
	DATE	PLAT NO.
RECORDED		

PREPARED AS TO SHEETS 1 TO 2
 IN ACCORDANCE WITH THE ZONING REGULATIONS
 OF HOWARD COUNTY



[Signature]

COORDINATES		
NO.	NORTH	EAST
200	502328.44	839038.11
201	502328.44	839088.11
202	502048.44	839088.11
203	502005.22	839107.09
204	502006.90	839017.11
205	502048.44	839038.11
206	502328.44	839024.96

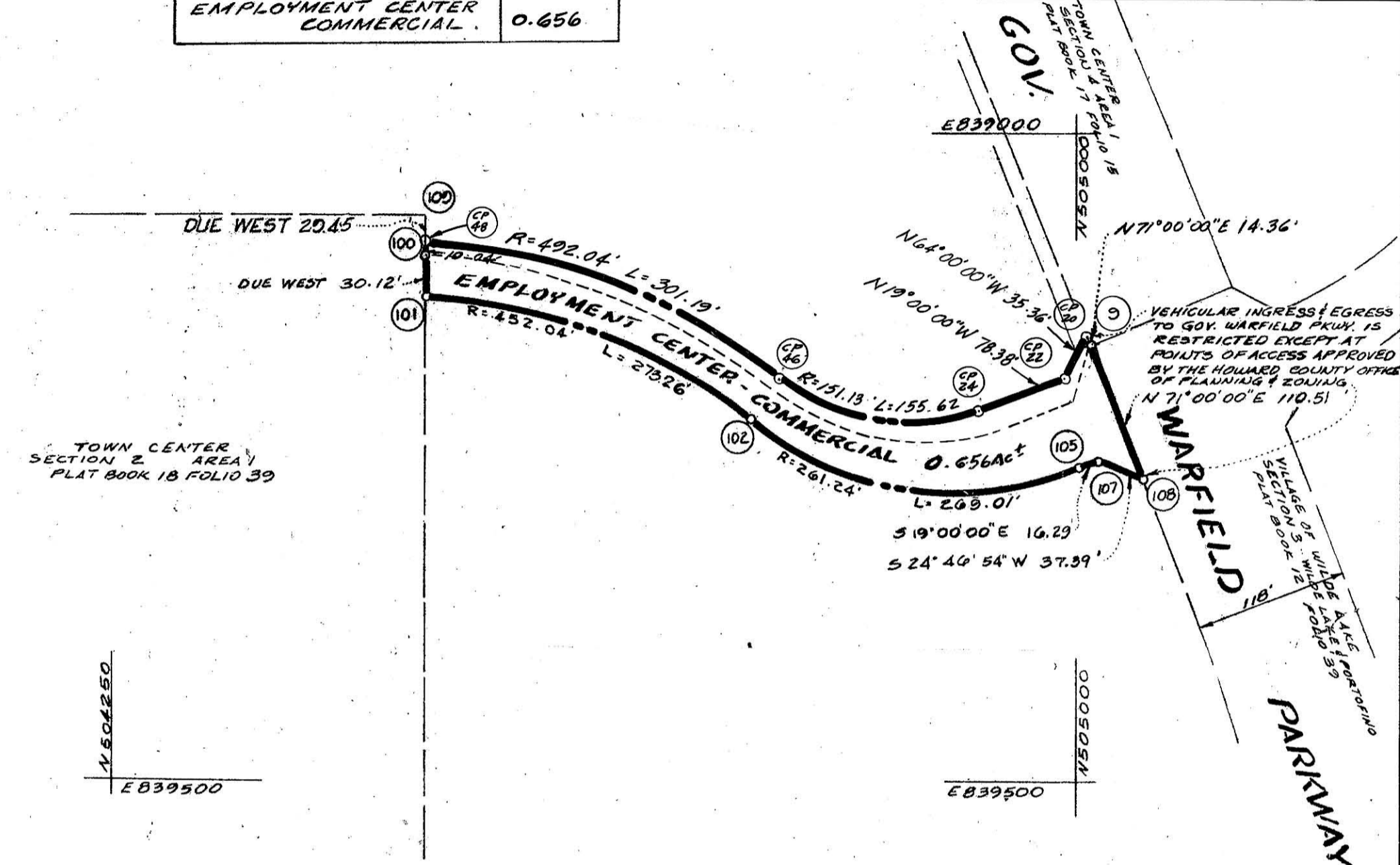


COORDINATES		
NO.	NORTH	EAST
101	504493.44	839134.57
100	504493.44	839104.45
CP48	504532.44	839099.35
CP46	504767.45	839207.71
CP24	504913.81	839234.83
9	505008.07	839191.11
108	505044.08	839295.60
107	505010.12	839279.23
105	504994.71	839285.23
102	504741.74	839238.35
109	504493.44	839064.96
CP22	504987.91	839209.31
CP20	505003.41	839177.54

RIGHT-OF-WAY AREAS

All of the land within this Final Development Plan Phase shall be used as the right-of-way for a portion of road and may be used for roadway and utility easement purposes. For the purpose of land use allocations under the provisions of Section 125 A-8 of the Howard County Zoning Regulations, such land shall be classified as Employment Center, Commercial use, as indicated on the maps contained in this Final Development Plan Phase.

TABULATION OF LAND USE	
LAND USE	ACRES
EMPLOYMENT CENTER COMMERCIAL	0.656



GRID NORTH

Ho Co. Gov't
PLAT # 3054-A-1618
DATE RECORDED

TOWN CENTER
SECTION 2 AREA 2
PETITIONER AND OWNER
THE HOWARD RESEARCH AND DEVELOPMENT CORPORATION
COLUMBIA, MD.
21044

COLUMBIA
AMENDED
FINAL DEVELOPMENT PLAN PHASE 101-A
5TH ELECTION DISTRICT HOWARD COUNTY, MD.
SCALE 1" = 100'
SHEET 2 OF 2