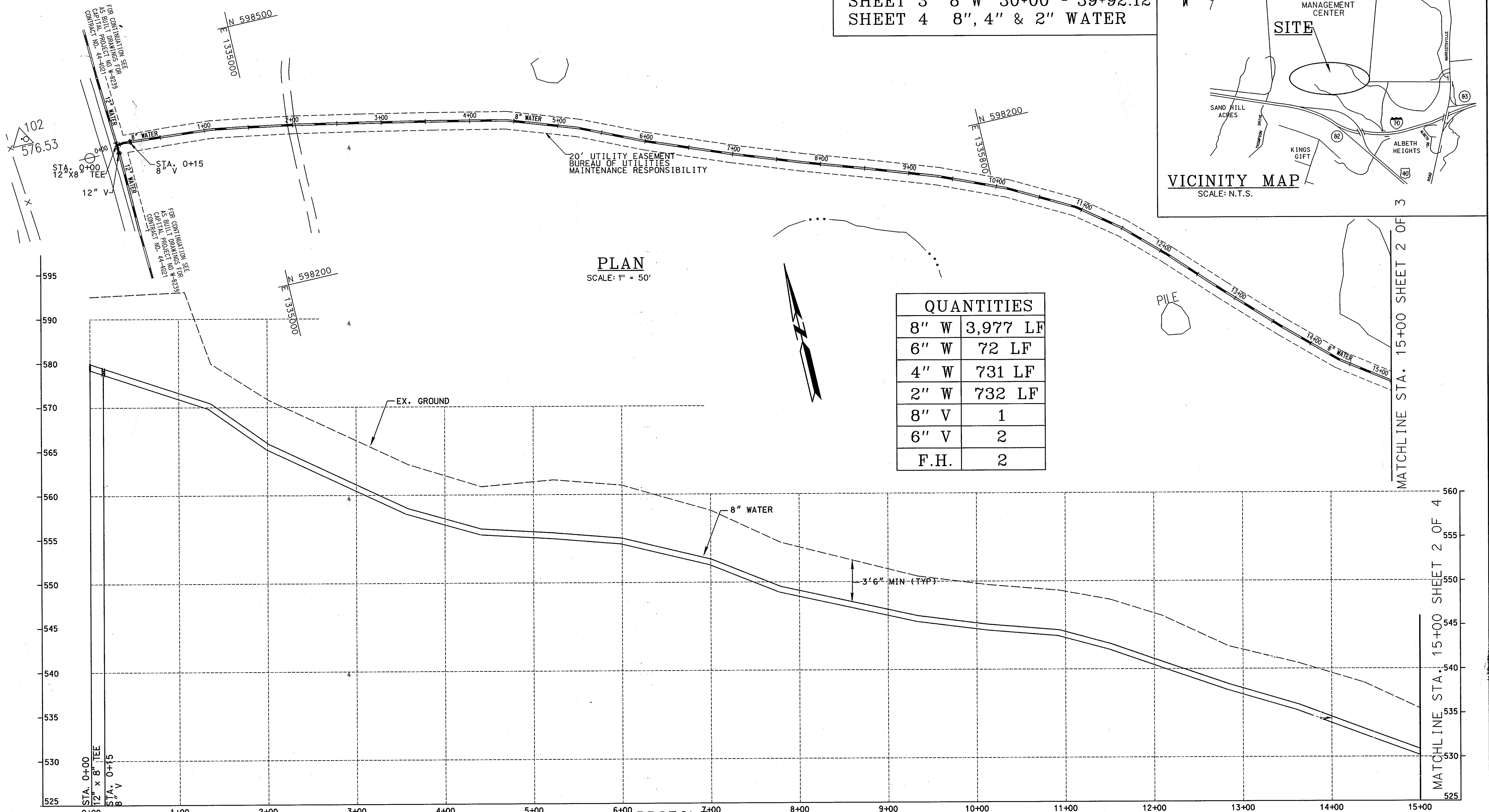
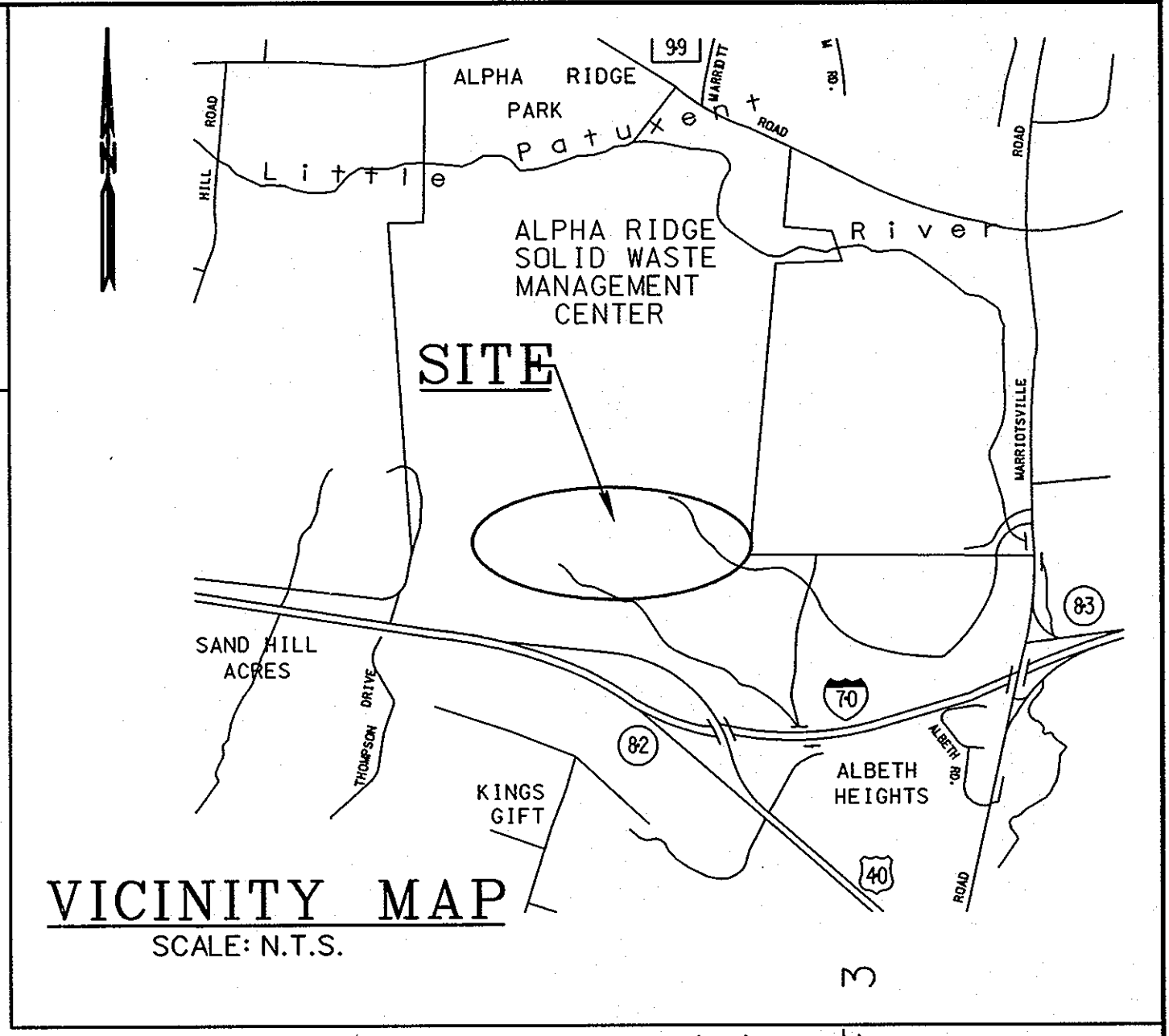


NOTE:
 THESE PLANS REPRESENT AS-BUILT CONDITIONS
 (11-2004) AS PREPARED BY KCI TECHNOLOGIES, INC.
 THIS PROJECT WAS A DETAIL-BUILD UNDER
 DIRECTION OF HOWARD COUNTY DEPARTMENT OF
 PUBLIC WORKS.

INDEX OF SHEETS			
SHEET 1	8" W	0+00 - 15+00	
SHEET 2	8" W	15+00 - 30+00	
SHEET 3	8" W	30+00 - 39+92.12	
SHEET 4	8", 4" & 2" WATER		



QUANTITIES	
8" W	3,977 LF
6" W	72 LF
4" W	731 LF
2" W	732 LF
8" V	1
6" V	2
F.H.	2

PLOTTED: 12:58 PM on Thursday, December 09, 2004
 By: Bob Jacobson, Division: Environmental Engineering
 File: M:\2004\04\3433\Alpha Ridge\AsBuilt.dwg

DEPARTMENT OF PUBLIC WORKS HOWARD COUNTY, MARYLAND	
DIRECTOR OF PUBLIC WORKS	DATE
CHIEF OF BUREAU OF UTILITIES	DATE
CHIEF, BUREAU OF ENGINEERING	DATE
CHIEF, UTILITY DESIGN DIVISION	DATE

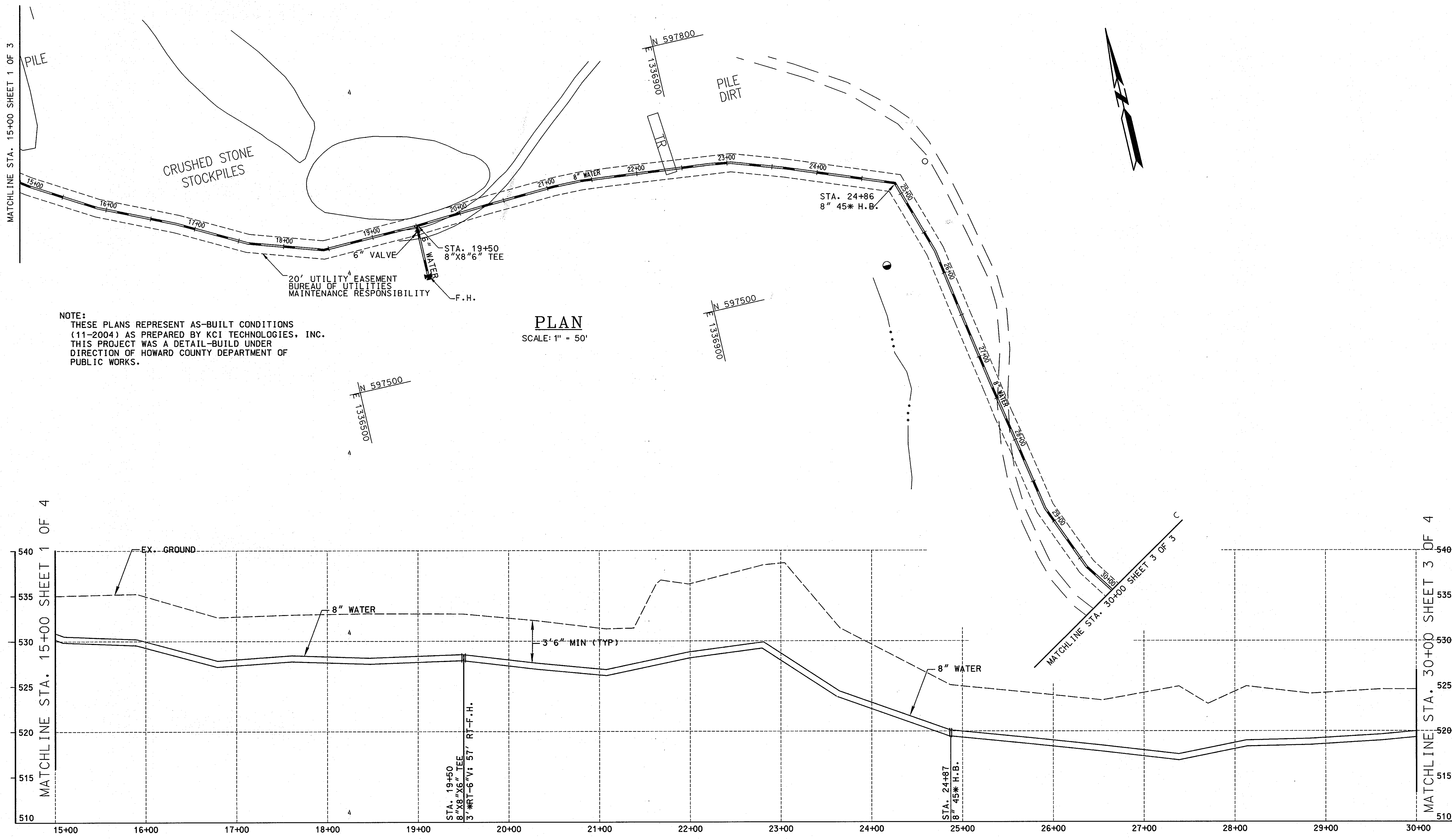
ENGINEERS
 PLANNERS
 SCIENTISTS
 CONSTRUCTION MANAGERS
 10 NORTH PARK DRIVE
 HUNT VALLEY, MD 21030
 PHONE: (410) 316-7800
 FAX: (410) 316-7817
 www.kci.com

DES:			
DRN:	RWJ		
CHK:	TWW		
DATE:	12/04		
BY:	RWJ	NO.	1
REVISION:	As-Built		
DATE:	12/10/04		

PLAN AND PROFILE
 8-INCH WATER MAIN
 STA. 0+00 - 15+00
 600' SCALE MAP NO. 16 BLOCK NO. 9 & 10

MEKENIE COURT/ALPHA RIDGE LANDFILL
 WATER MAIN LOOPING
 CAPITAL PROJECT NO. W-8239
 CONTRACT NO. 44-4158
 ELECTION DISTRICT NO. 3 HOWARD COUNTY, MARYLAND
 SCALE AS SHOWN
 SHEET 1 OF 4

AS BUILT



NOTE:
 THESE PLANS REPRESENT AS-BUILT CONDITIONS
 (11-2004) AS PREPARED BY KCI TECHNOLOGIES, INC.
 THIS PROJECT WAS A DETAIL-BUILD UNDER
 DIRECTION OF HOWARD COUNTY DEPARTMENT OF
 PUBLIC WORKS.

PLAN
 SCALE: 1" = 50'

PROFILE
 SCALE: HORIZONTAL 1" = 50'
 VERTICAL 1" = 5'

AS BUILT

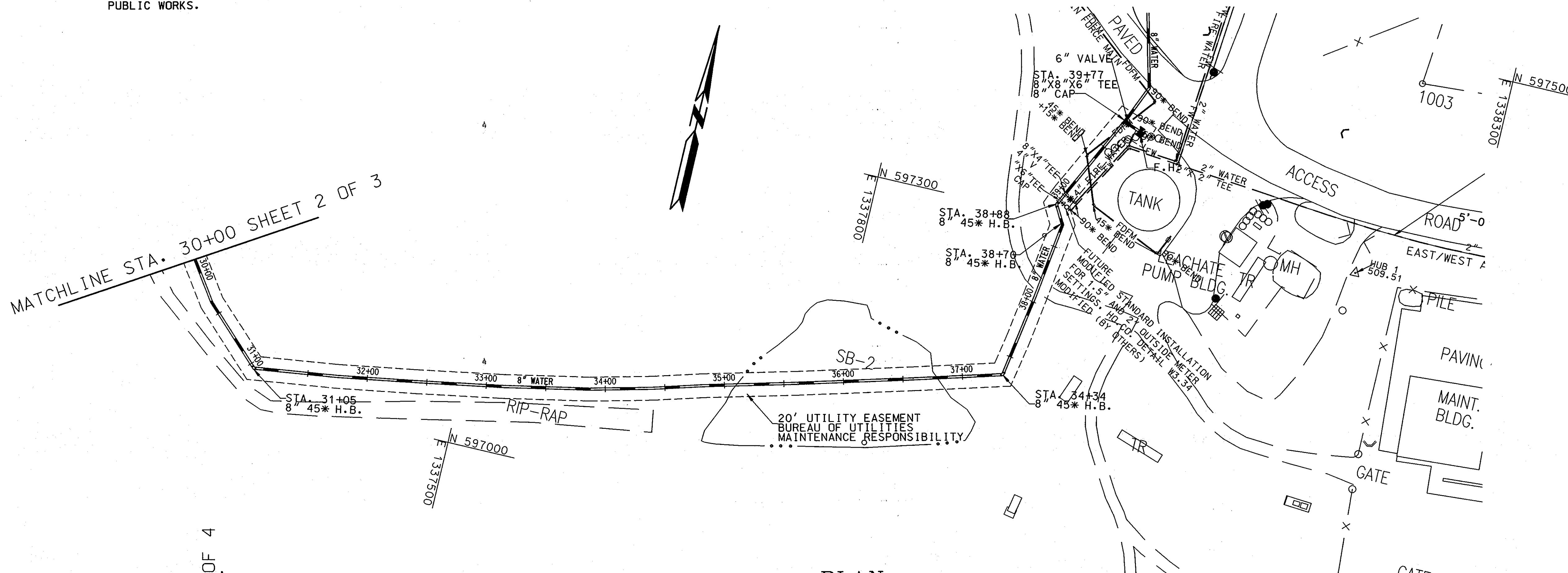
PLOTTED: 12:59 PM on Thursday, December 09, 2004
 BY: Bob Jacobson, Division Environmental Engineering
 FILE: H:\2004\0044158\301.dwg

DEPARTMENT OF PUBLIC WORKS HOWARD COUNTY, MARYLAND		 KCI TECHNOLOGIES <small>10 North Park Drive Hunt Valley, MD 21030 Phone: (410) 316-7800 Fax: (410) 316-7817 www.kci.com</small>	DES:		PLAN AND PROFILE 8-INCH WATER MAIN STA. 15+00 - 30+00	MEKENIE COURT/ALPHA RIDGE LANDFILL WATER MAIN LOOPING CAPITAL PROJECT NO. W-8239 CONTRACT NO. 44-4158		SCALE					
DIRECTOR OF PUBLIC WORKS	DATE		CHIEF, BUREAU OF ENGINEERING	DATE		DRN: RWJ	AS SHOWN	ELECTION DISTRICT NO. 3 HOWARD COUNTY, MARYLAND		SHEET			
CHIEF, BUREAU OF UTILITIES	DATE	CHIEF, UTILITY DESIGN DIVISION	DATE	CHK: TWJ	DATE: 12/04	BY: RWJ	NO. 1	AS-BUILT	REVISION	DATE: 12/04	600' SCALE MAP NO. 16	BLOCK NO. 9 & 10	2 OF 4

NOTE:
 THESE PLANS REPRESENT AS-BUILT CONDITIONS
 (11-2004) AS PREPARED BY KCI TECHNOLOGIES, INC.
 THIS PROJECT WAS A DETAIL-BUILD UNDER
 DIRECTION OF HOWARD COUNTY DEPARTMENT OF
 PUBLIC WORKS.

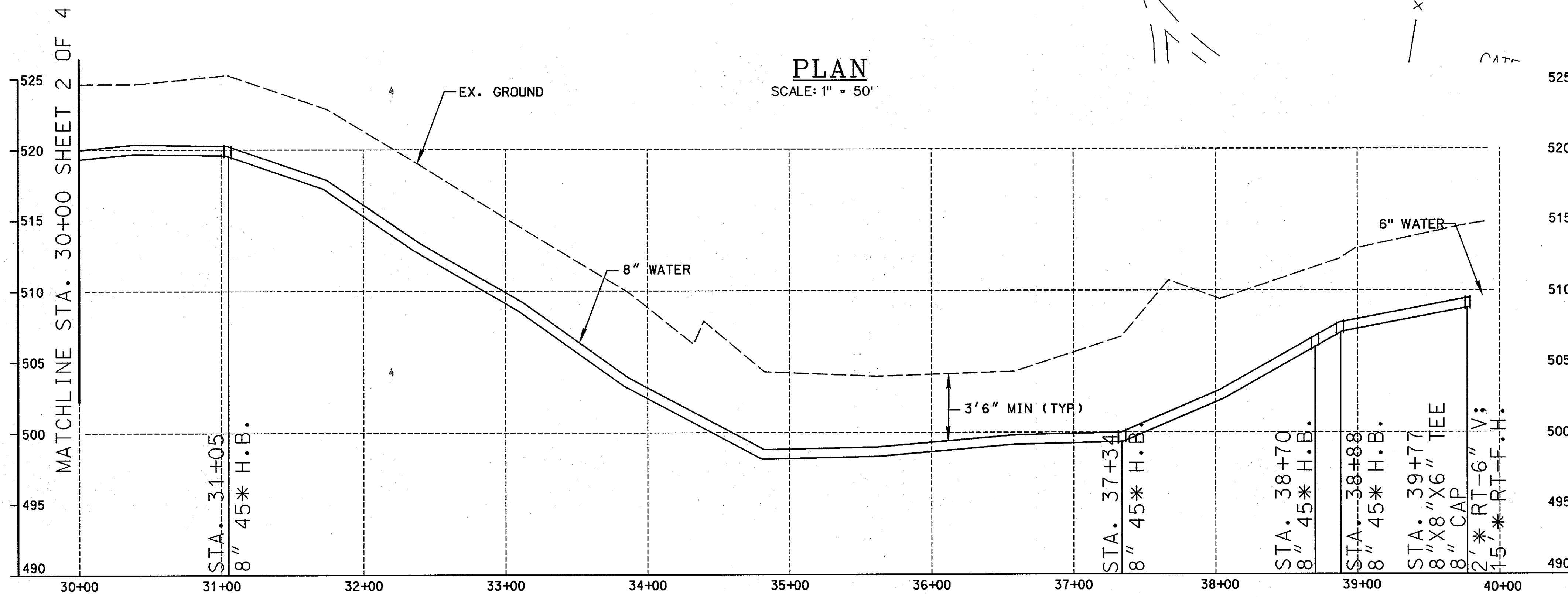
FOR 8" W, 4" W, & 2" WHC SEE SHEET 4 OF 4

MATCHLINE STA. 30+00 SHEET 2 OF 3



PLAN

SCALE: 1" = 50'



PROFILE

SCALE: HORIZONTAL 1" = 50'
 VERTICAL 1" = 5'

AS BUILT

PLOTTED: 12:59 PM on Thursday, December 09, 2004
 BY: Bob Jacobson, Division: Environmental Engineering
 FILE: J:\2004\10\04\44-1583\Alpha Ridge\ASBUILT.dgn

DEPARTMENT OF PUBLIC WORKS HOWARD COUNTY, MARYLAND			
DIRECTOR OF PUBLIC WORKS	DATE	CHIEF, BUREAU OF ENGINEERING	DATE
CHIEF, BUREAU OF UTILITIES	DATE	CHIEF, UTILITY DESIGN DIVISION	DATE

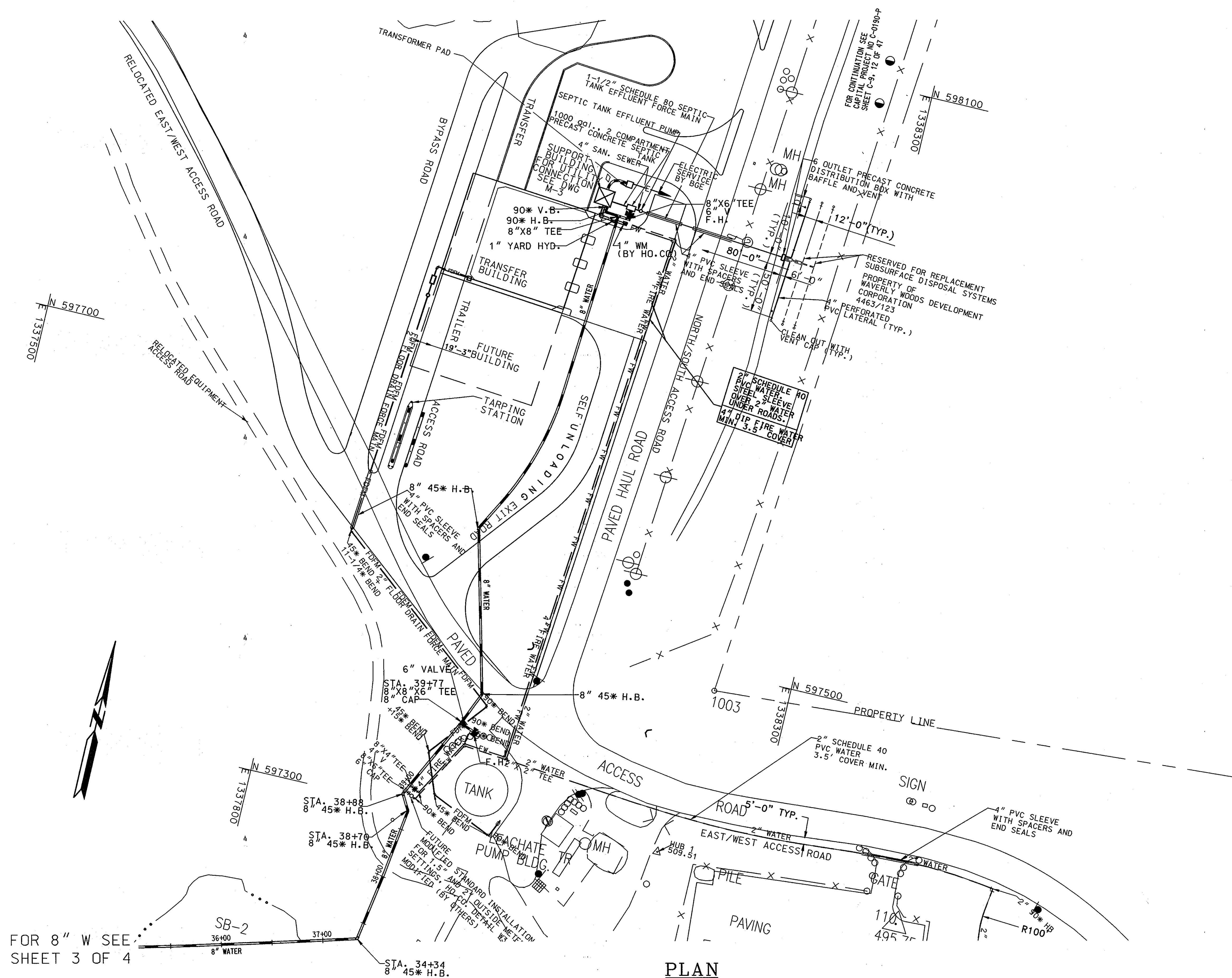

KCI
 TECHNOLOGIES
 ENGINEERS
 PLANNERS
 SCIENTISTS
 CONSTRUCTION MANAGERS
 10 North Park Drive
 Hunt Valley, MD 21030
 Phone: (410) 316-7800
 Fax: (410) 316-7817
 www.kci.com

DES:				
DRN:	RWJ			
CHK:	TWW			
DATE:	12/04			
BY:	RWJ	NO.	1	AS BUILT
REVISION				
DATE:	12/04			

PLAN AND PROFILE
8-INCH WATER MAIN
STA. 30+00 - 39+77
 600' SCALE MAP NO. 16 BLOCK NO. 9 & 10

MEKENIE COURT/ALPHA RIDGE LANDFILL
WATER MAIN LOOPING
CAPITAL PROJECT NO. W-8239
CONTRACT NO. 44-4158
ELECTION DISTRICT NO. 3 HOWARD COUNTY, MARYLAND

SCALE AS SHOWN
 SHEET 3 OF 4



FOR 8" W SEE SHEET 3 OF 4

PLAN
SCALE: 1" = 50'

AS BUILT

PLOTTED: 08:17 AM on Friday, December 10, 2004
 BY: Bob Jacobson, Division Environmental Engineering
 FILE: W-8239-1300-4158-1.dwg, RSGP, V8.00, 2.dwg

DEPARTMENT OF PUBLIC WORKS HOWARD COUNTY, MARYLAND		ENGINEERS PLANNERS SCIENTISTS CONSTRUCTION MANAGERS 10 North Park Drive HENTZ VALLEY, MD 21030 Phone: (410) 316-7800 Fax: (410) 316-7817 www.kci.com		DES: _____ DRN: RWJ CHK: TWW DATE: 12/04 BY: RWJ NO.: 1 REVISION: <i>As Built</i>		PLAN 8", 2" WHC & 4" FIRE WATER		MEKENIE COURT/ALPHA RIDGE LANDFILL WATER MAIN LOOPING CAPITAL PROJECT NO. W-8239 CONTRACT NO. 44-4158 ELECTION DISTRICT NO. 3 HOWARD COUNTY, MARYLAND		SCALE AS SHOWN SHEET 4 OF 4
DIRECTOR OF PUBLIC WORKS	DATE	CHIEF, BUREAU OF ENGINEERING	DATE	CHIEF, BUREAU OF UTILITIES	DATE	CHIEF, UTILITY DESIGN DIVISION	DATE	600' SCALE MAP NO. 16	BLOCK NO. 9 & 10	