


**LEGEND:**  
 - INDICATES AREA OF NEW WORK.  
 EX. - EXISTING  
 HPA - HIGH PRESSURE AIR

GENERAL OVERALL SITE PLAN / SITE DEVELOPMENT  
 SCALE IN FEET 0 50 100 200 300  
 SCALE: 1" = 100'

DEPARTMENT OF PUBLIC WORKS  
 HOWARD COUNTY, MARYLAND  
 R. B. B. *Ruth Berger* 5-31-02  
 CHIEF, BUREAU OF UTILITIES DATE

**b**  
**BUCHART HORN, INC.**  
 Engineers, Architects and Planners  
*Henry Cantel*



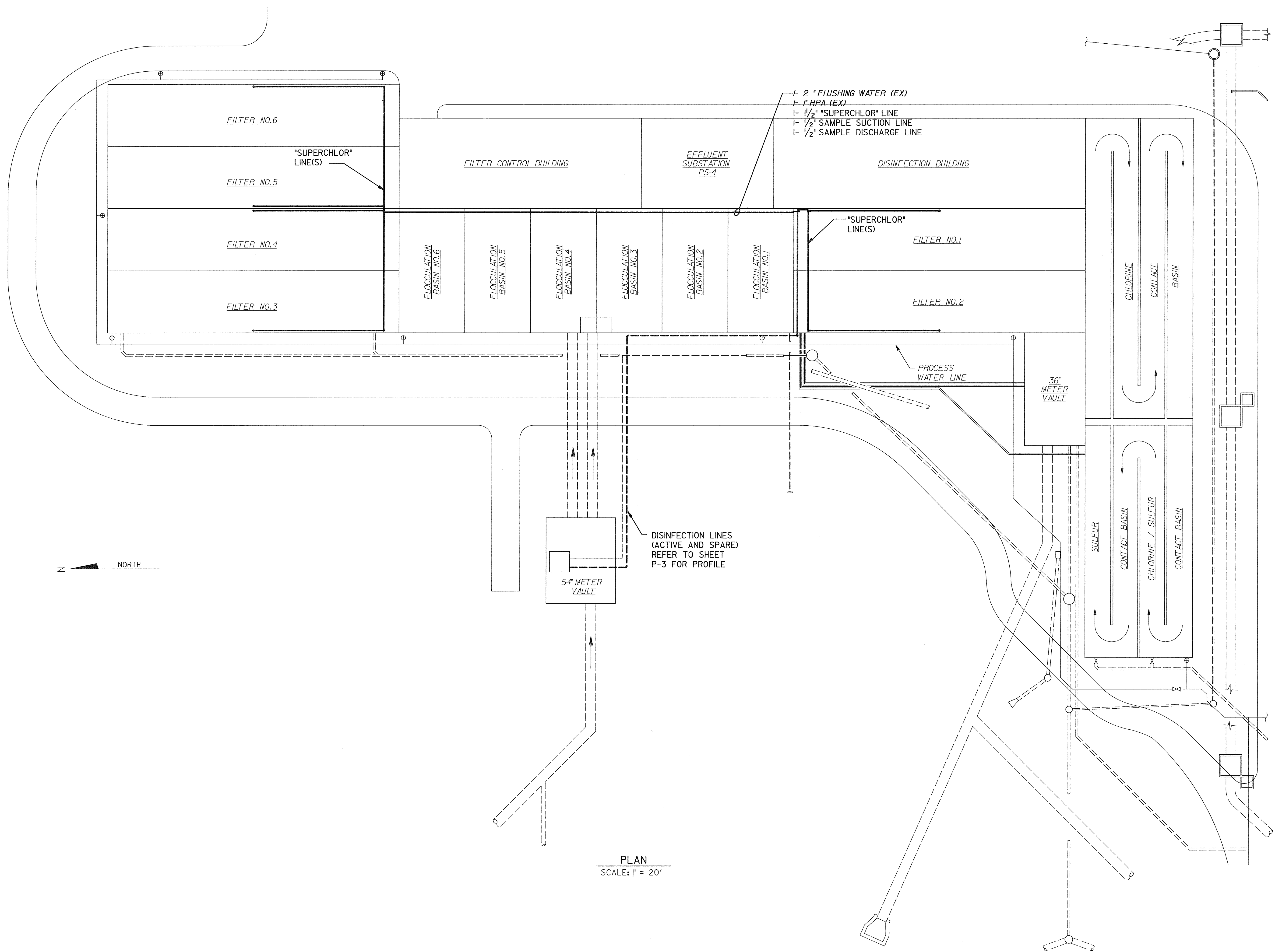
DES:	HG				
DRN:	RP				
CHK:	HG				
DATE:	2/14/00	BY	NO.	REVISION	DATE

OVERALL PLAN

LITTLE PATUXENT WATER RECLAMATION PLANT  
 MULTIPLE IMPROVEMENTS  
 CHLORINATION / DECHLORINATION  
 CAPITAL PROJECT NO. S-6223  
 CONTRACT NO. 20-3837  
 ELECTION DISTRICT NO. 6  
 HOWARD COUNTY, MARYLAND

SCALE AS SHOWN  
 SHEET 2 OF 10  
 SI-1

11:11 01/17/18 02:02 design\chris\c02d02.dwg  
 2/14/00 10:00 AM



PLAN  
SCALE: 1" = 20'

DEPARTMENT OF PUBLIC WORKS  
HOWARD COUNTY, MARYLAND



DES:	HG				
DRN:	RP				
CHK:	HC				
DATE:	2/14/00	BY:	NO.	REVISION	DATE

SPECIFIC  
SITE PLAN

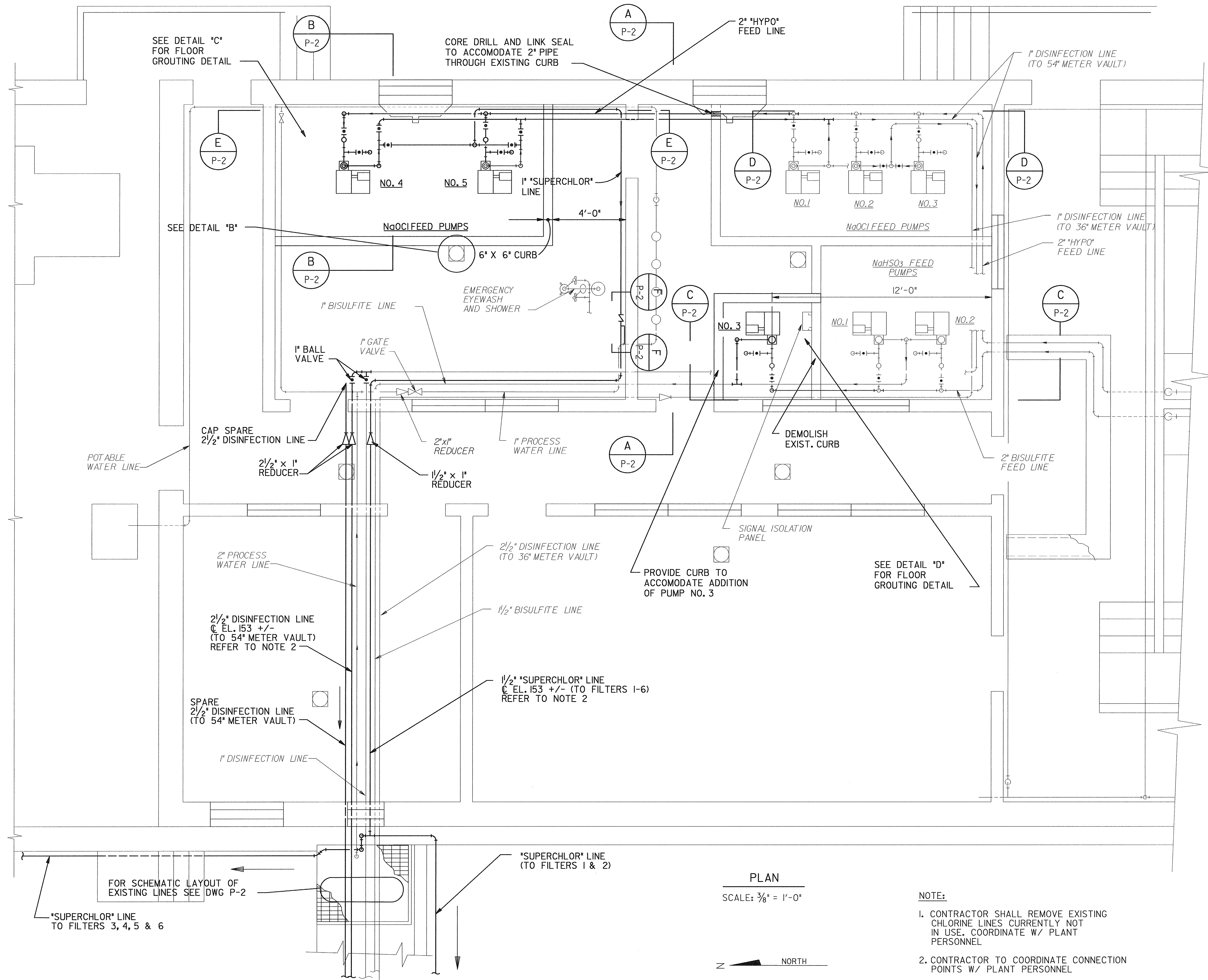
LITTLE PATUXENT WATER RECLAMATION PLANT  
MULTIPLE IMPROVEMENTS  
CHLORINATION / DECHLORINATION  
CAPITAL PROJECT NO. S-6223  
CONTRACT NO. 20-3837  
ELECTION DISTRICT NO. 6  
HOWARD COUNTY, MARYLAND

SCALE AS SHOWN SHEET  
3 OF 10  
C-1

PRF \$  
DCN \$

FILE: g:\2014\1005\02\_design\ch06\02.dwg  
DATE: 10-Nov-14 10:00

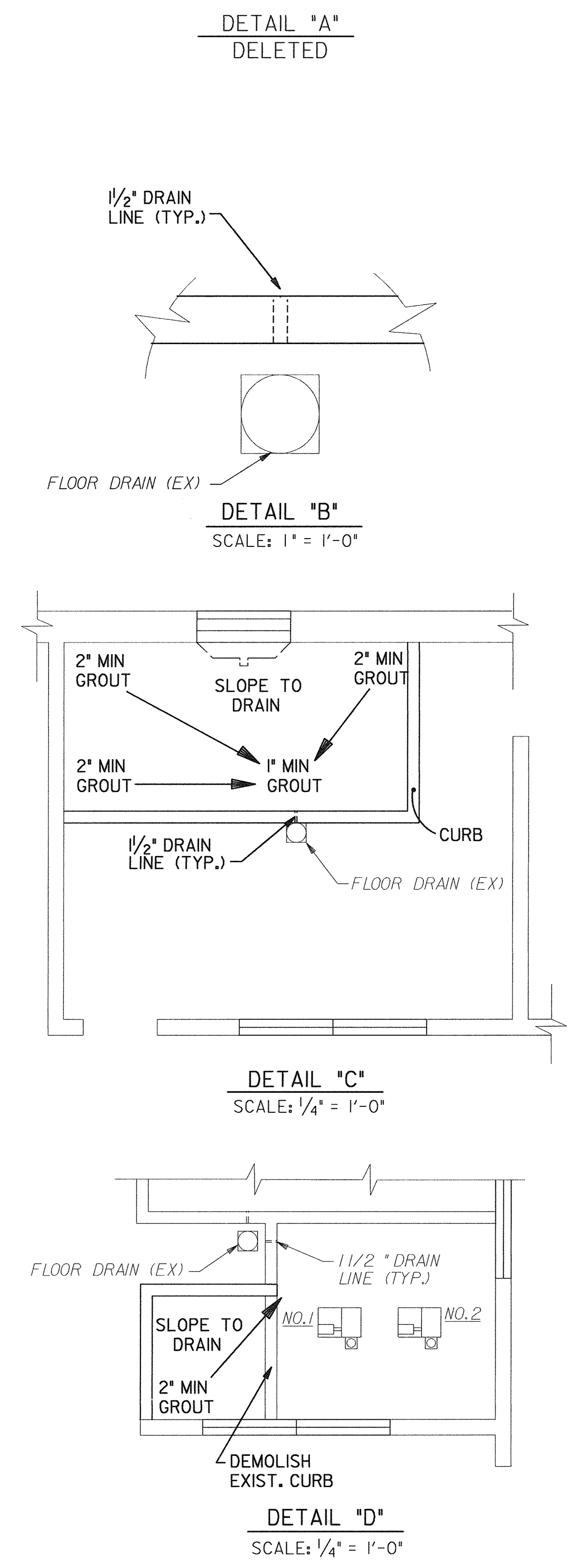




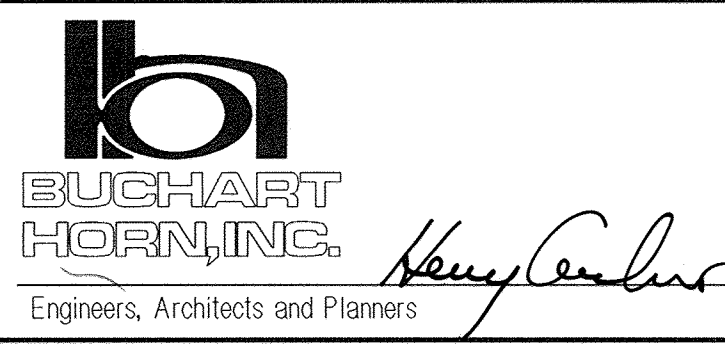
PLAN  
SCALE: 3/8" = 1'-0"



- NOTE:
- CONTRACTOR SHALL REMOVE EXISTING CHLORINE LINES CURRENTLY NOT IN USE. COORDINATE W/ PLANT PERSONNEL
  - CONTRACTOR TO COORDINATE CONNECTION POINTS W/ PLANT PERSONNEL



DEPARTMENT OF PUBLIC WORKS  
HOWARD COUNTY, MARYLAND



DES:	HG				
DRN:	RP				
CHK:	HG				
DATE:	2/14/00	BY:	NO.	REVISION	DATE

DISINFECTATION BUILDING  
MODIFICATIONS  
CHEMICAL FEED ROOM PLANS

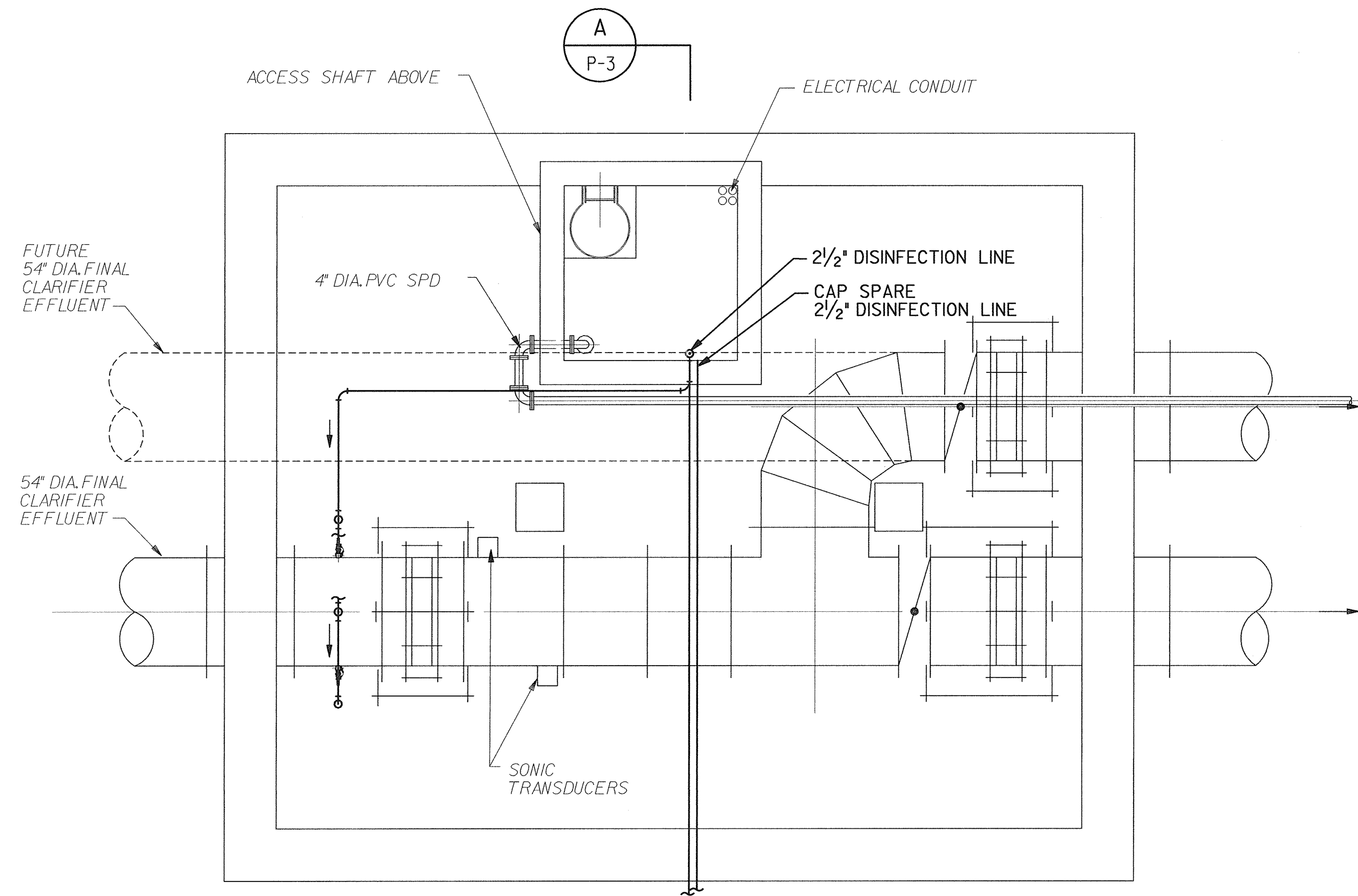
LITTLE PATUXENT WATER RECLAMATION PLANT  
MULTIPLE IMPROVEMENTS  
CHLORINATION / DECHLORINATION  
CAPITAL PROJECT NO. S-6223  
CONTRACT NO. 20-3837  
ELECTION DISTRICT NO. 6  
HOWARD COUNTY, MARYLAND

SCALE AS SHOWN  
SHEET  
4 OF 10  
P-1

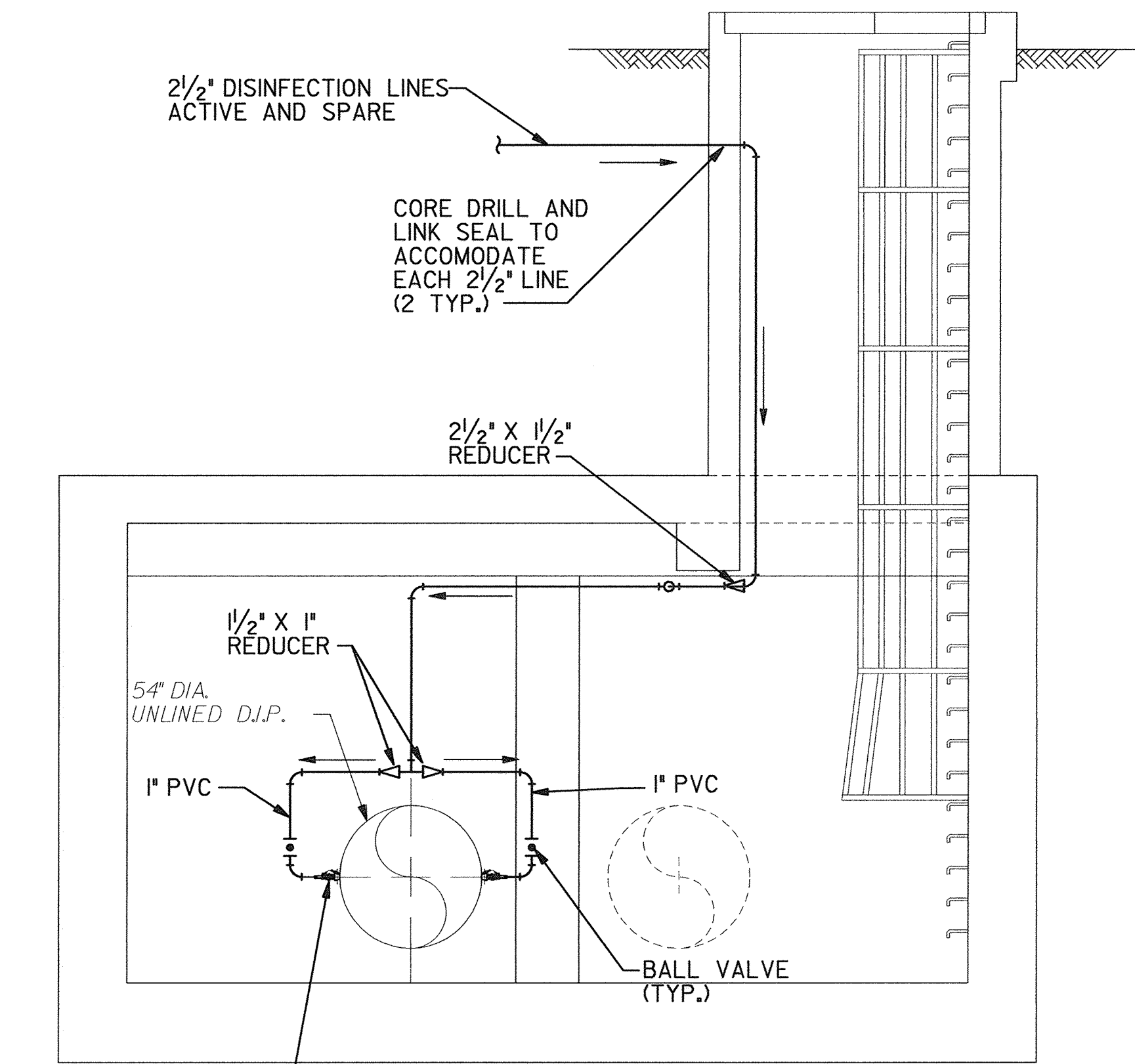
4PRF\$ 80GN\$  
FILE: g:\p\1805\02\_desig\chlor\cod\02.plt.dgn  
DATE: 12-01-99 10:25



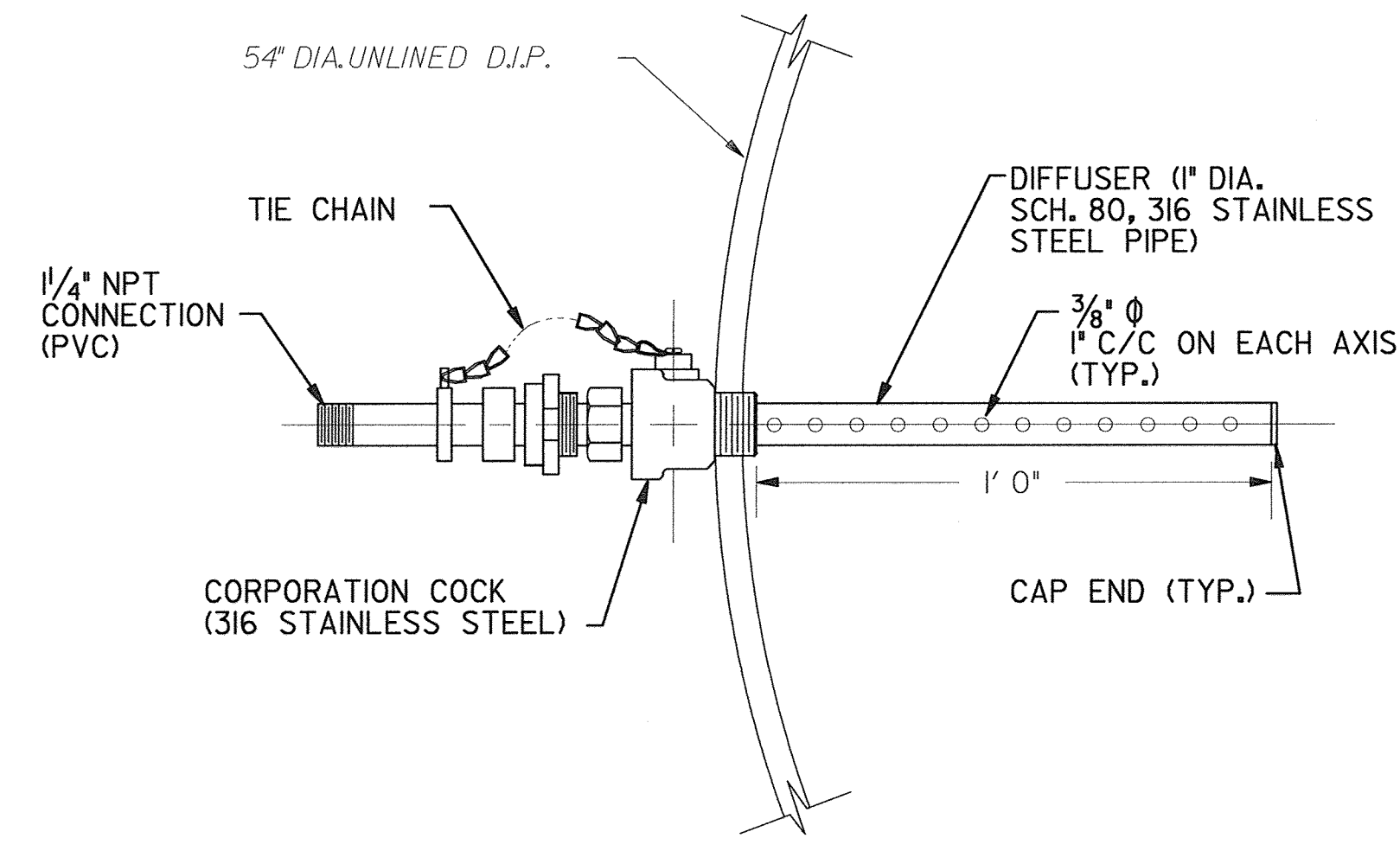




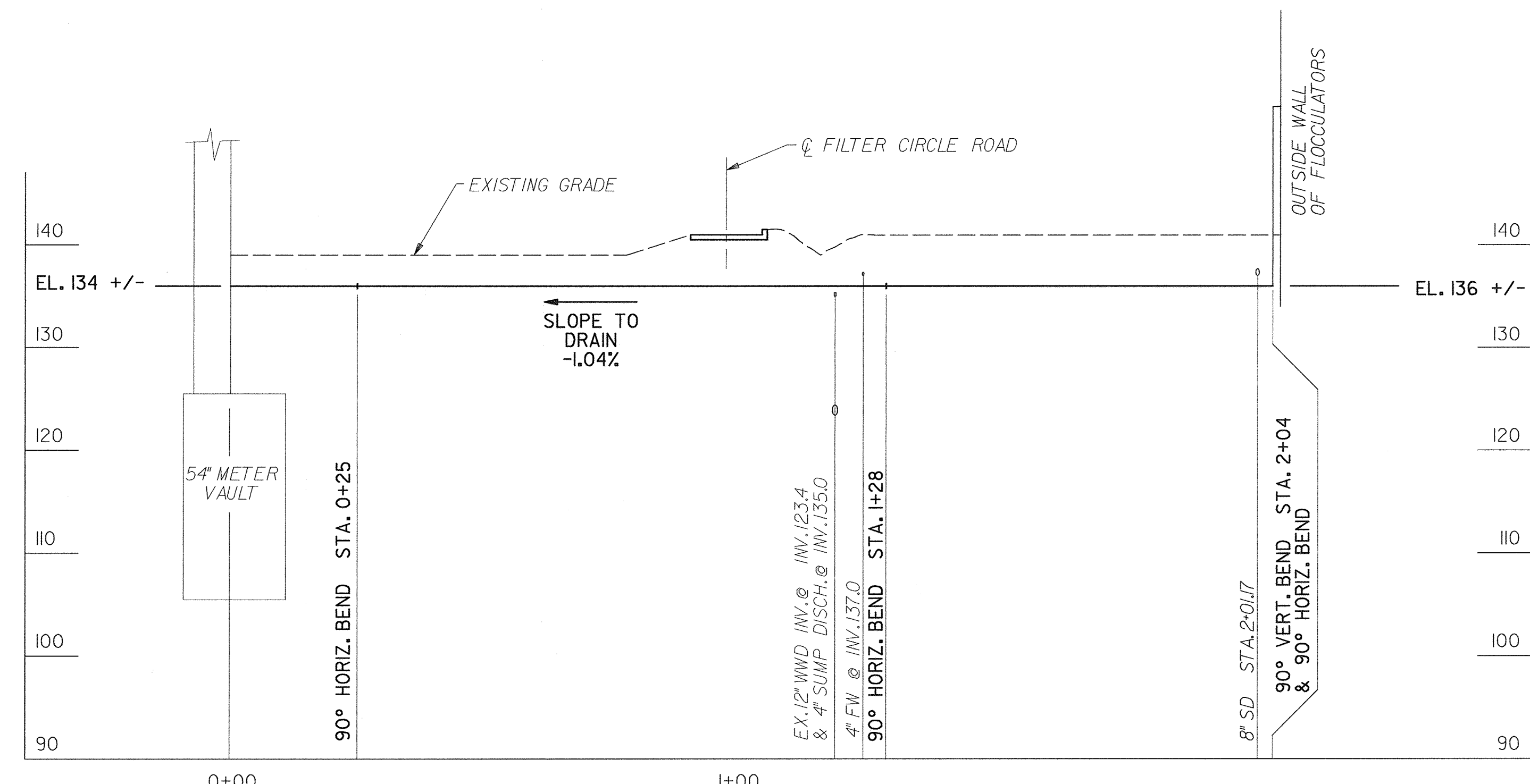
PLAN  
SCALE: 1/4" = 1'-0"



SECTION A-A  
SCALE: 1/4" = 1'-0"



CHLORINE DIFFUSER ASSEMBLY  
SCALE: 3" = 1'-0"



2 1/2" DISINFECTION LINE  
SCALE: HORIZ. 1"=20' VERT. 1"=10'

DEPARTMENT OF PUBLIC WORKS  
HOWARD COUNTY, MARYLAND

**BUCHART HORN, INC.**  
Engineers, Architects and Planners



DES:	HG			
DRN:	RP			
CHK:	HG			
DATE:	2/14/00	BY:	NO.	REVISION
				DATE

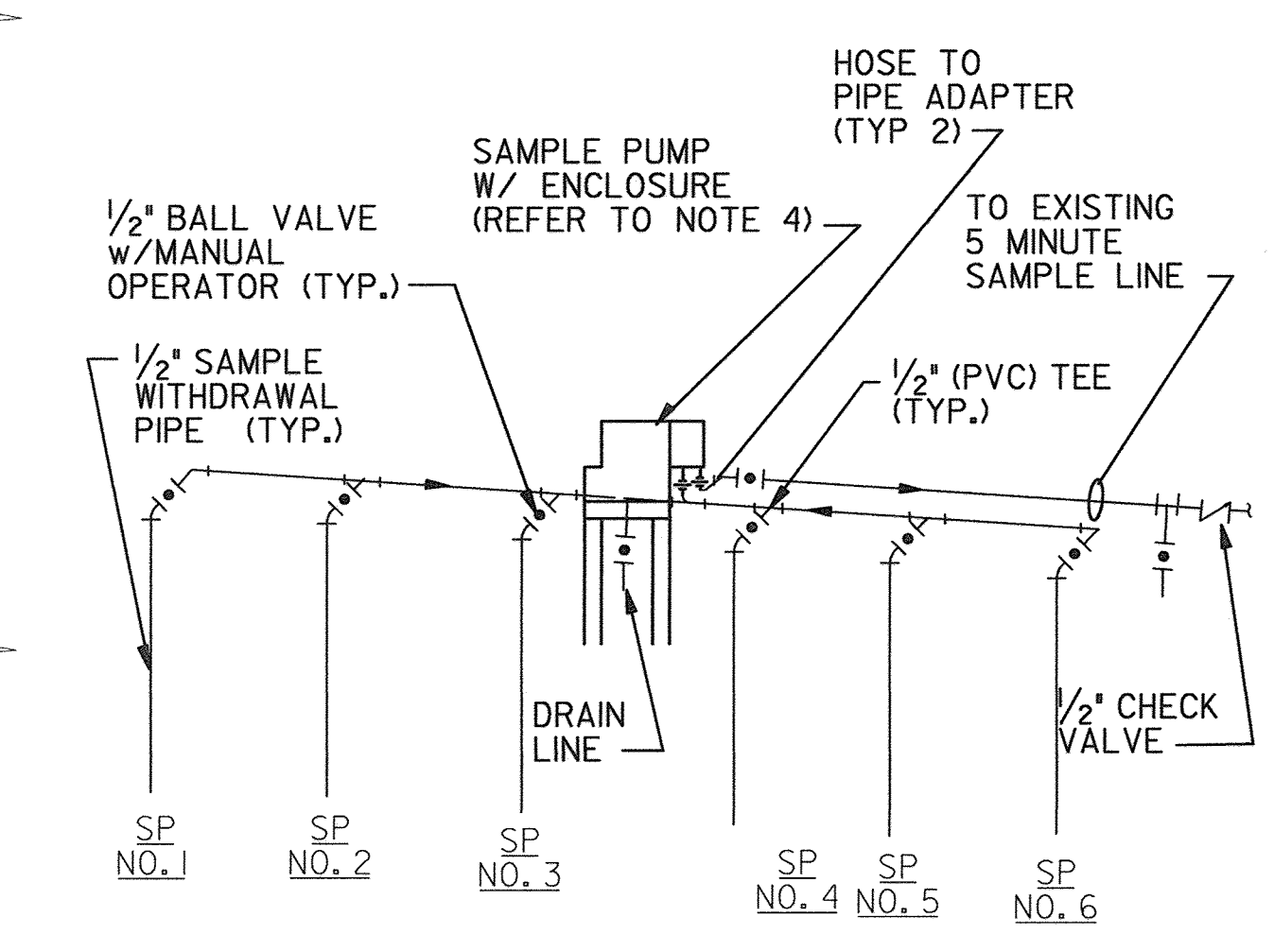
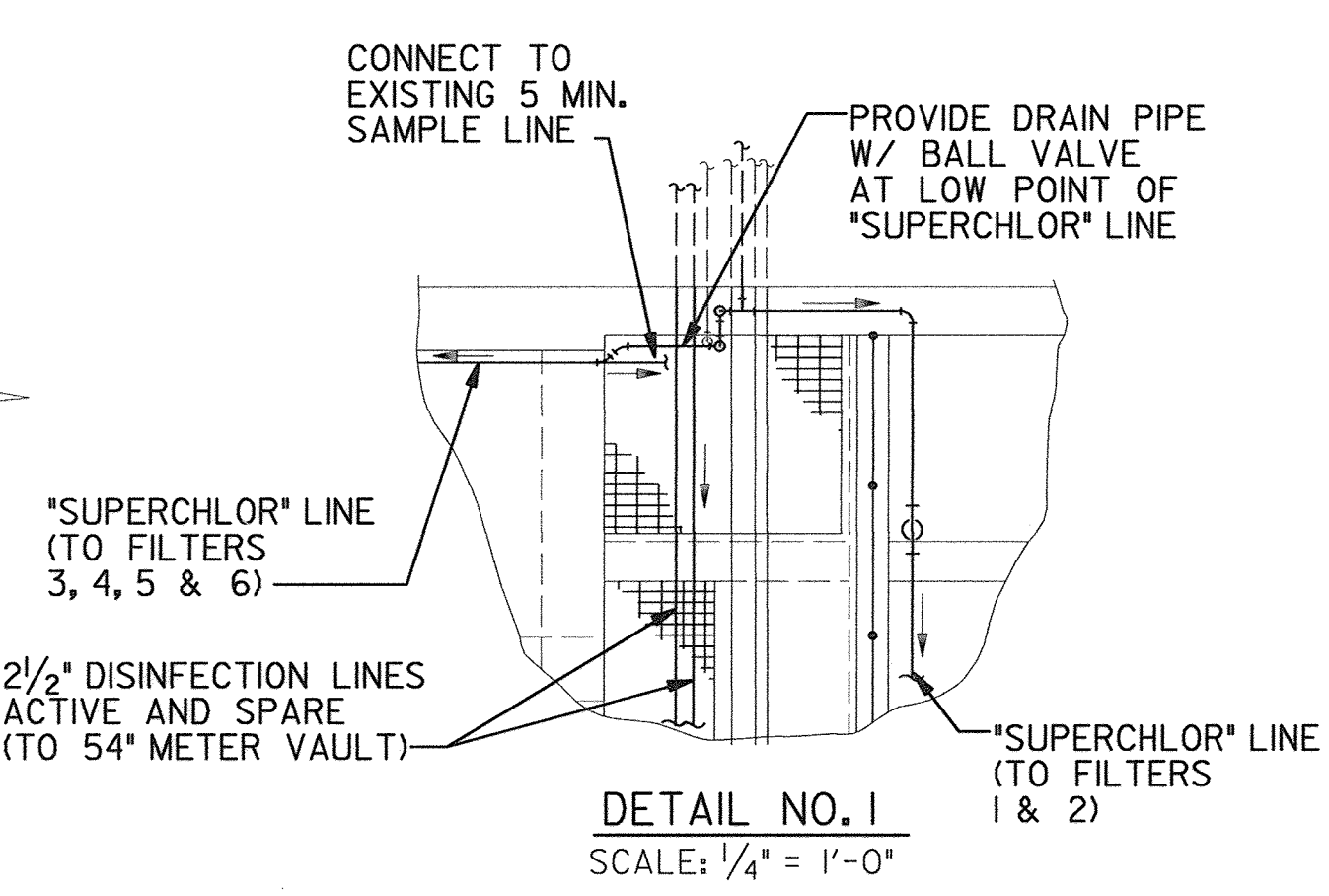
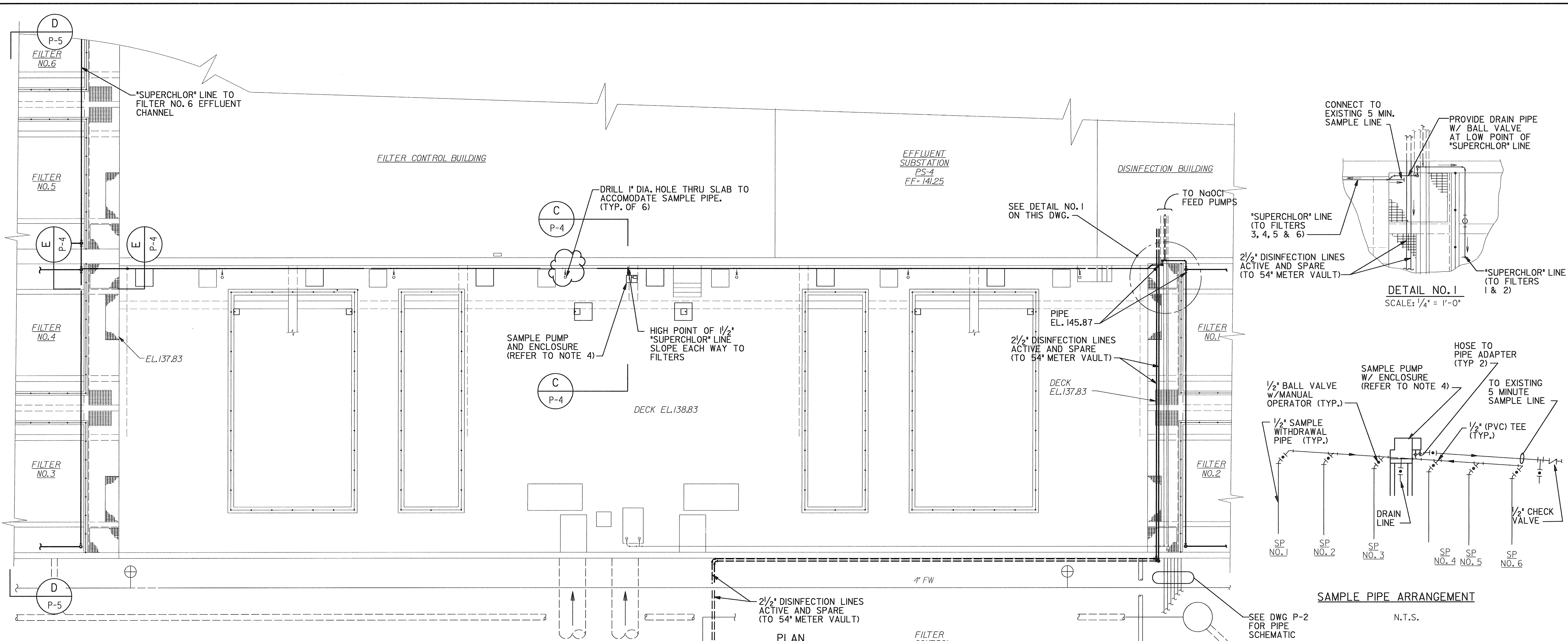
METER VAULT  
PLAN AND SECTION

LITTLE PATUXENT WATER RECLAMATION PLANT  
MULTIPLE IMPROVEMENTS  
CHLORINATION / DECHLORINATION  
CAPITAL PROJECT NO. S-6223  
CONTRACT NO. 20-3837  
ELECTION DISTRICT NO. 6  
HOWARD COUNTY, MARYLAND

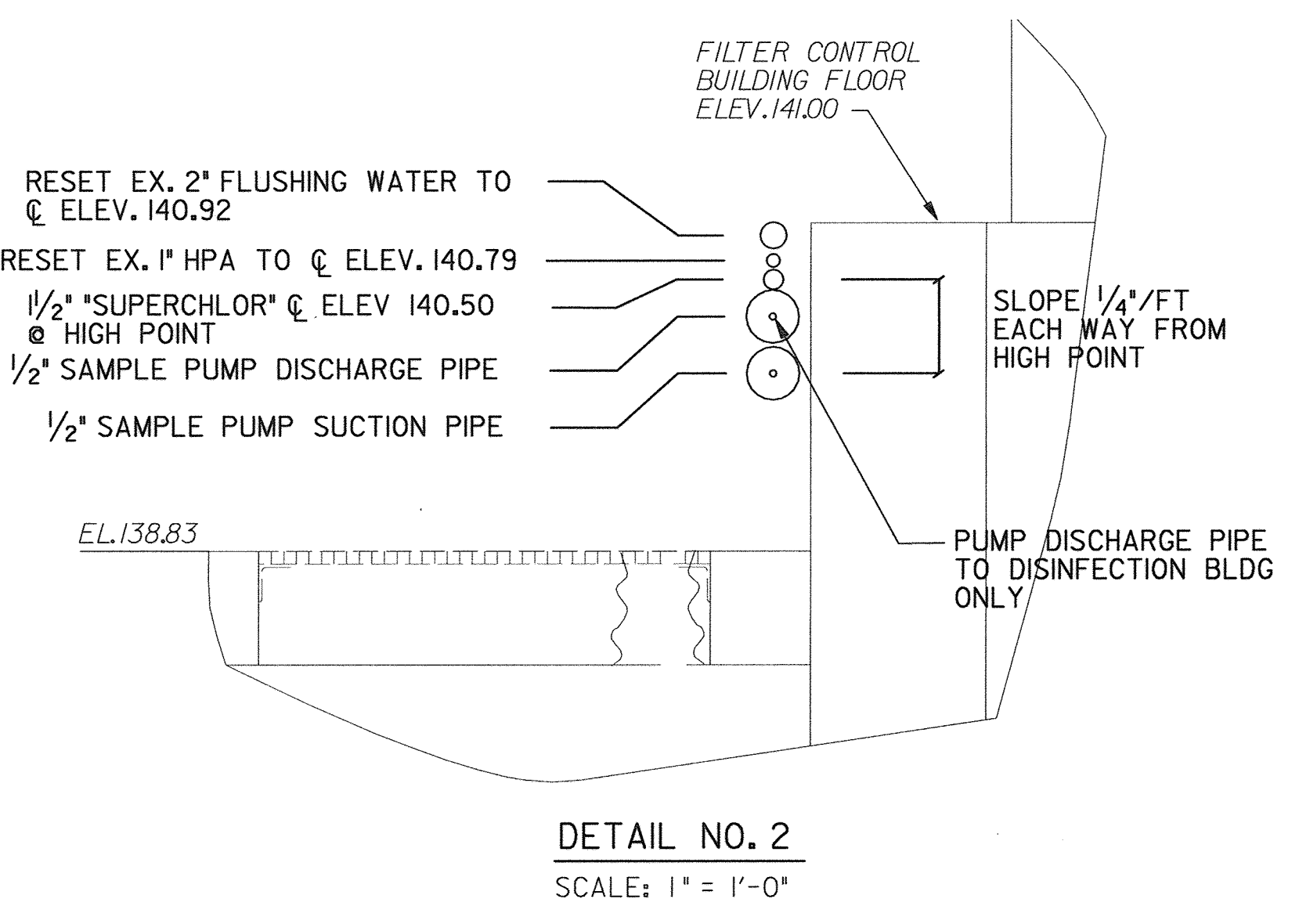
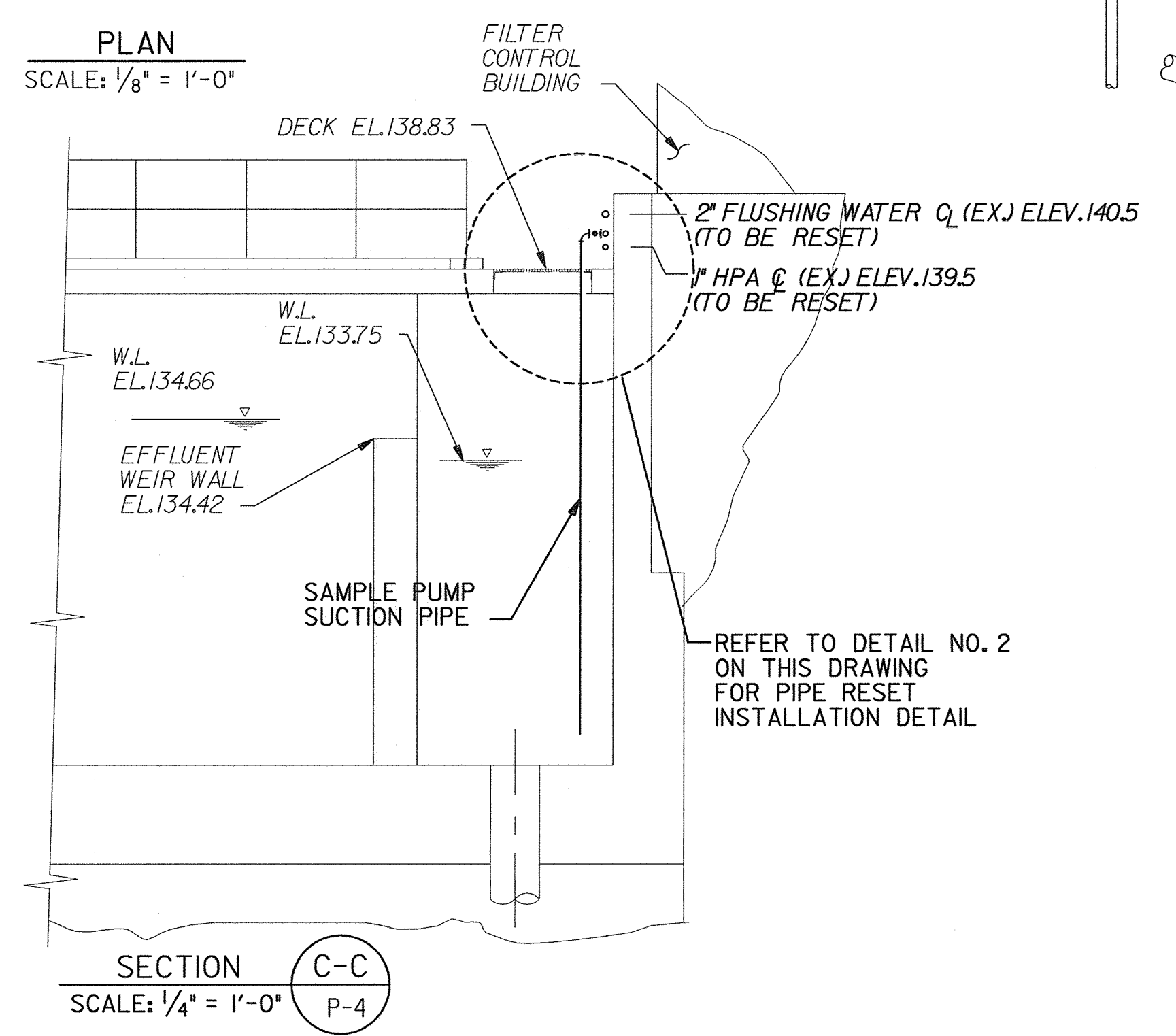
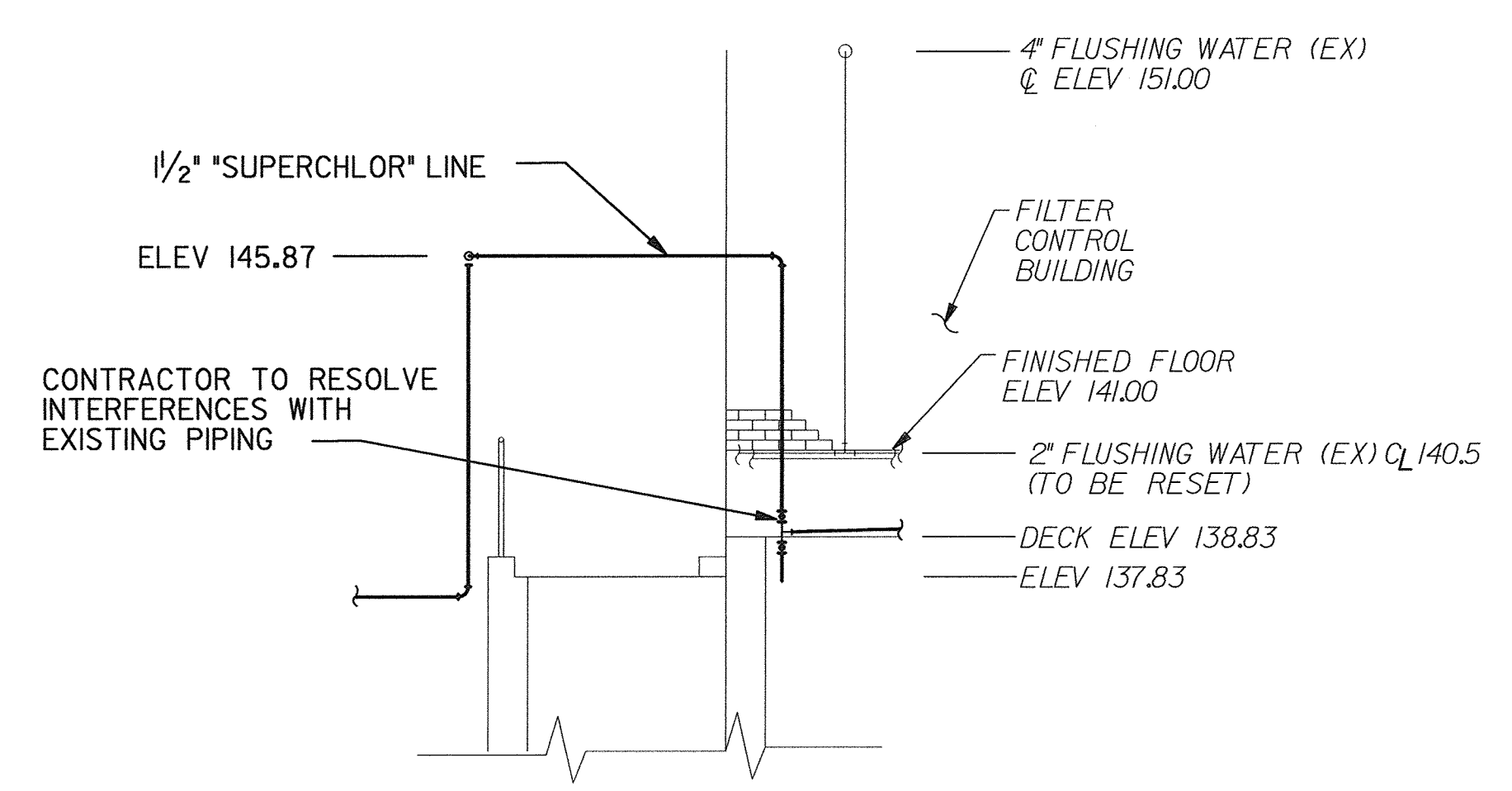
SCALE AS SHOWN  
SHEET 6 OF 10  
P-3

90006

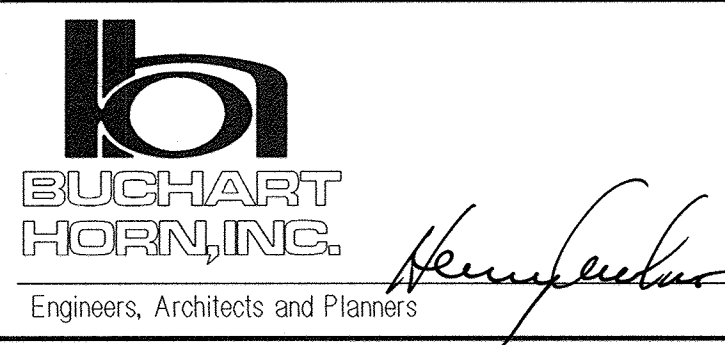
FILE: g:\09\71805\02\_design\chlor\cad\02.p3.dgn  
DATE: 12-Nov-99 15:08



- NOTES:**
1. SLOPE ALL LINES TO DRAIN
  2. CONTRACTOR SHALL PROVIDE PIPE SUPPORTS AS NEEDED MAX. SPACING - 10' C-C
  3. PIPES MAY BE STACKED
  4. PROVIDE STANDARD PUMP ENCLOSURE AND ALUMINUM FRAME WITH BASE PLATE. ENCLOSURE TO BE PUMP GUARD MODEL PG-1500 AS MANUFACTURED BY HOT BOX, INC., JACKSONVILLE, FL., OR APPROVED EQUAL.



DEPARTMENT OF PUBLIC WORKS  
HOWARD COUNTY, MARYLAND



DES:	HG				
DRN:	RP				
CHK:	HG				
DATE:	2/14/00	BY:	NO.	REVISION	DATE

FLOCCULATION BASINS

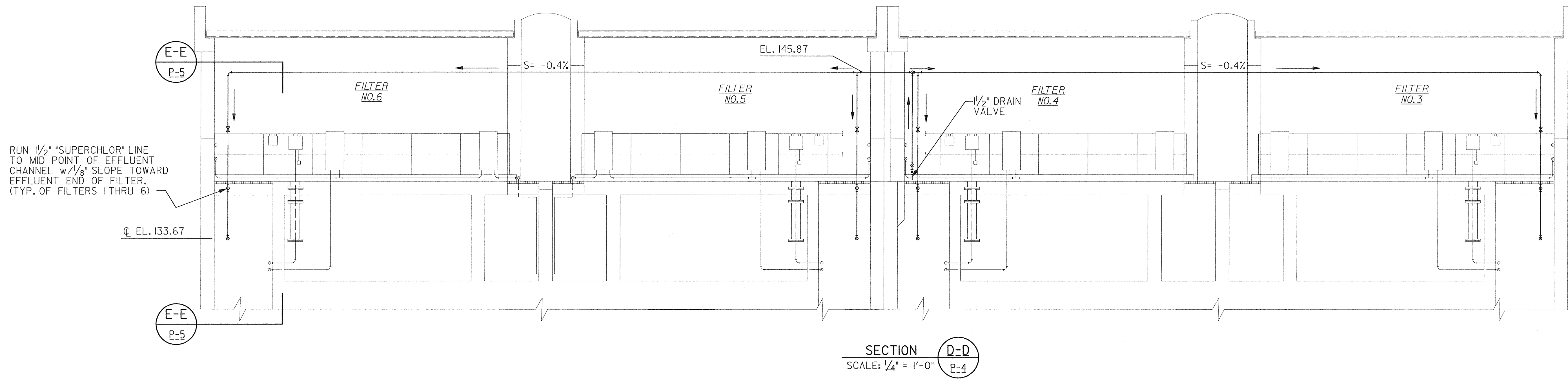
LITTLE PATUXENT WATER RECLAMATION PLANT  
MULTIPLE IMPROVEMENTS  
CHLORINATION / DECHLORINATION  
CAPITAL PROJECT NO. S-6223  
CONTRACT NO. 20-3837  
ELECTION DISTRICT NO. 6  
HOWARD COUNTY, MARYLAND

SCALE AS SHOWN SHEET  
7 OF 10  
P-4

PRF \$  
800N6

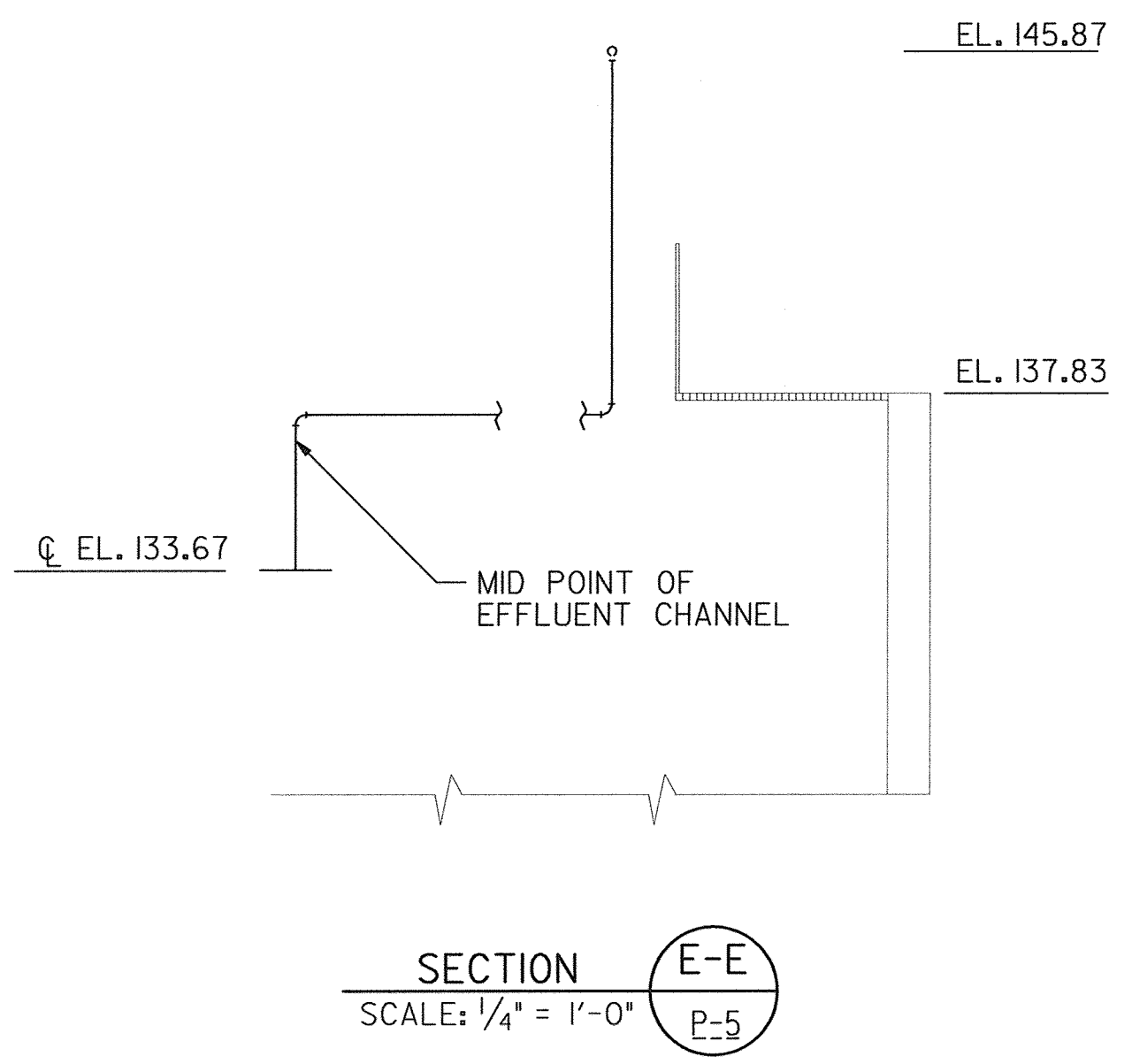
FILE: g:\09\7805\02\_desig\vhon\cccd\02\_p1a.dgn  
DATE: 01-Oct-99 08:53



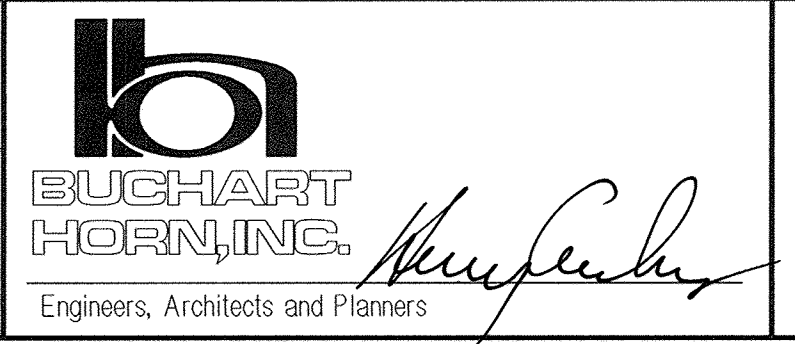


RUN 1/2" SUPERCHLOR LINE TO MID POINT OF EFFLUENT CHANNEL w/1/8" SLOPE TOWARD EFFLUENT END OF FILTER. (TYP. OF FILTERS 1 THRU 6)

- NOTE:**
- CONTRACTOR SHALL PROVIDE PIPE SUPPORTS, MINIMUM 10' C/C
  - PIPE INSTALLATION FOR FILTERS #1 AND #2 SIMILAR TO ABOVE



DEPARTMENT OF PUBLIC WORKS  
HOWARD COUNTY, MARYLAND



DES:	HG				
DRN:	RP				
CHK:	HG				
DATE:	2/14/00	BY:	NO.	REVISION	DATE

FILTER SECTIONS  
3 THROUGH 6

LITTLE PATUXENT WATER RECLAMATION PLANT  
MULTIPLE IMPROVEMENTS  
CHLORINATION / DECHLORINATION  
CAPITAL PROJECT NO. S-6223  
CONTRACT NO. 20-3837  
ELECTION DISTRICT NO. 6  
HOWARD COUNTY, MARYLAND

SCALE AS SHOWN  
SHEET 8 OF 10  
P-5

48PFS \$DCN\$

FILE: d:\09\7895\02\_dest\chlor\cad\02.p5.dgn  
DATE: 08-Nov-99 09:08



**ELECTRICAL ABBREVIATIONS**

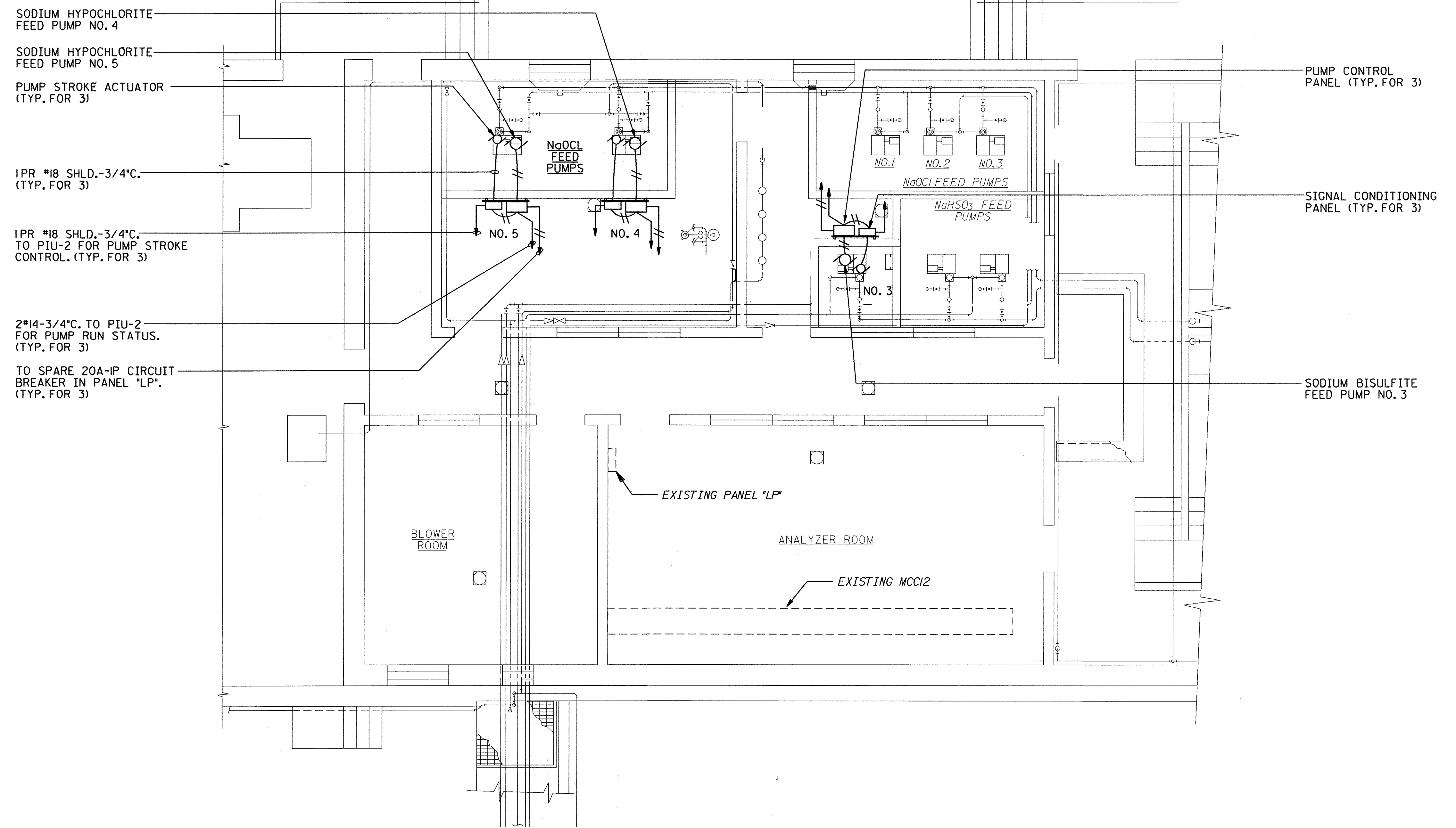
- A - AMPERE
- C - CONDUIT
- GRD. - GROUND
- HP - HORSEPOWER
- MCC - MOTOR CONTROL CENTER
- P - POLE
- PH - PHASE
- PR. - PAIR
- SHLD. - SHIELDED
- S.S. - STAINLESS STEEL
- TYP. - TYPICAL
- V - VOLTS
- W - WIRE

**ELECTRICAL SYMBOLS**

- - HOMERUN TO PANEL
- ≡ - TICKS INDICATE NUMBER OF WIRES NOT INCLUDING GROUND
- ⊕ - JUNCTION BOX
- ⊙ - MOTOR
- ⊖ - THERMOSTAT

**ELECTRICAL NOTES**

1. SLANTED LETTERING INDICATES EXISTING EQUIPMENT.
2. PROVIDE A GREEN INSULATED GROUND WIRE IN ALL CONDUIT RUNS. GROUND WIRE SHALL BE #12 UNLESS NOTED OTHERWISE.



**DISINFECTION BUILDING - ELECTRICAL PLAN**



Plot Date: 02/17/2000 (KMARKLE:23,yof,k,dbdd)  
 PRF: J:\proj\71805\cadd\elec\c12\805fel.dwg  
 DGN: J:\proj\71805\cadd\elec\c12\805fel.dgn - LV11-63

DEPARTMENT OF PUBLIC WORKS  
HOWARD COUNTY, MARYLAND

*Robert Benjamin* 5-31-00  
CHIEF, BUREAU OF UTILITIES DATE

**bh**  
**BUCHART HORN, INC.**  
Engineers, Architects and Planners



DES:					
DRN:					
CHK:					
DATE:	BY	NO.	REVISION	DATE	

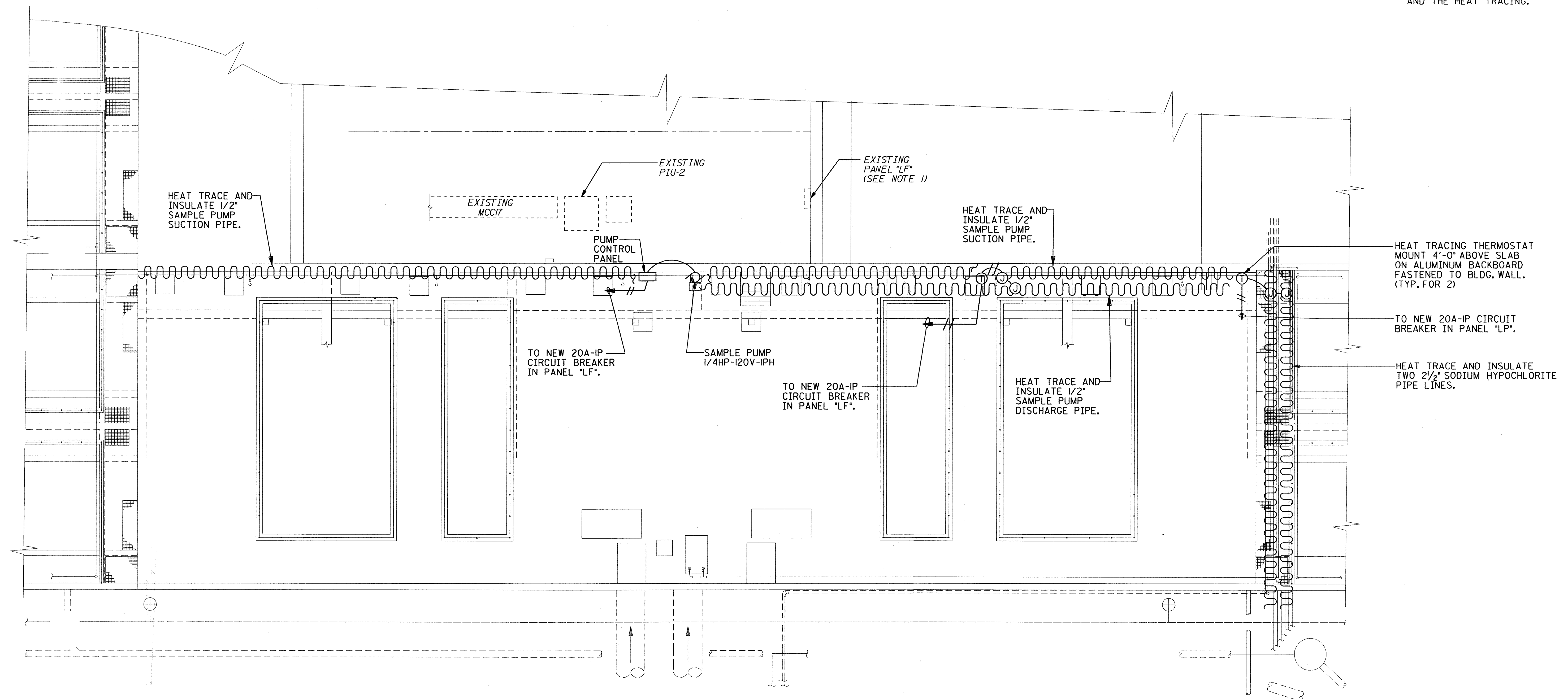
**DISINFECTION BUILDING  
ELECTRICAL PLAN**

LITTLE PATUXENT WATER RECLAMATION PLANT  
MULTIPLE IMPROVEMENTS  
CHLORINATION / DECHLORINATION  
CAPITAL PROJECT NO. S-6223  
CONTRACT NO. 20-3837  
ELECTION DISTRICT NO. 6  
HOWARD COUNTY, MARYLAND

SCALE AS SHOWN  
SHEET 9 OF 10  
E-1

**NOTES**

1. PANEL "LF" IS A GE PANELBOARD. INSTALL THREE (3) 20A-1P CIRCUIT BREAKERS IN THIS PANEL TO FEED THE SAMPLE PUMP AND THE HEAT TRACING.



**FLOCCULATION BASINS - ELECTRICAL PLAN**



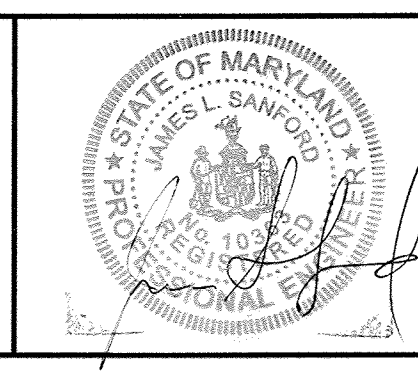
Plot Date: 02/17/2000 (KMARKLE:23.yor.k.dhbd)  
 PRF: J:\proj\71805\cadd\elec\12\805fe2.dgn  
 DGN: J:\proj\71805\cadd\elec\12\805fe2.dgn - LVH-63

DEPARTMENT OF PUBLIC WORKS  
HOWARD COUNTY, MARYLAND

*Robert Benning* 5-31-00  
CHIEF, BUREAU OF UTILITIES DATE

**BUCHART HORN, INC.**  
Engineers, Architects and Planners

*Henry Schubert*



DES:					
DRN:					
CHK:					
DATE:	BY	NO.	REVISION	DATE	

**FLOCCULATION BASINS ELECTRICAL PLAN**

LITTLE PATUXENT WATER RECLAMATION PLANT  
MULTIPLE IMPROVEMENTS  
CHLORINATION / DECHLORINATION  
CAPITAL PROJECT NO. S-6223  
CONTRACT NO. 20-3837  
ELECTION DISTRICT NO. 6  
HOWARD COUNTY, MARYLAND

SCALE AS SHOWN  
SHEET 10 OF 10  
E-2