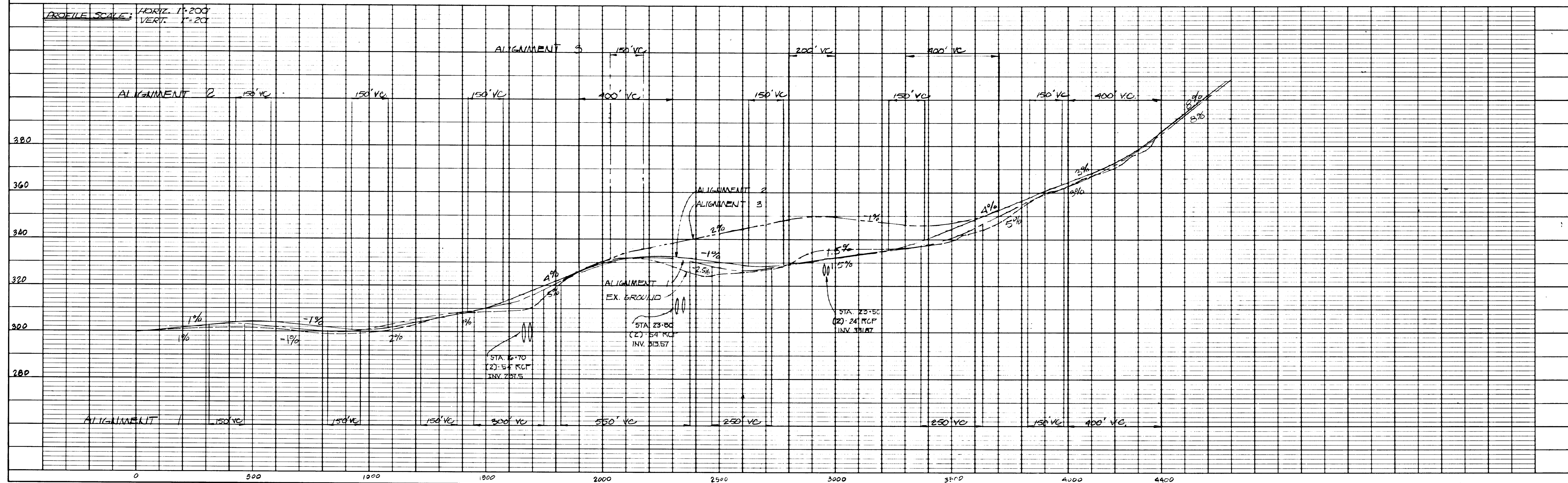
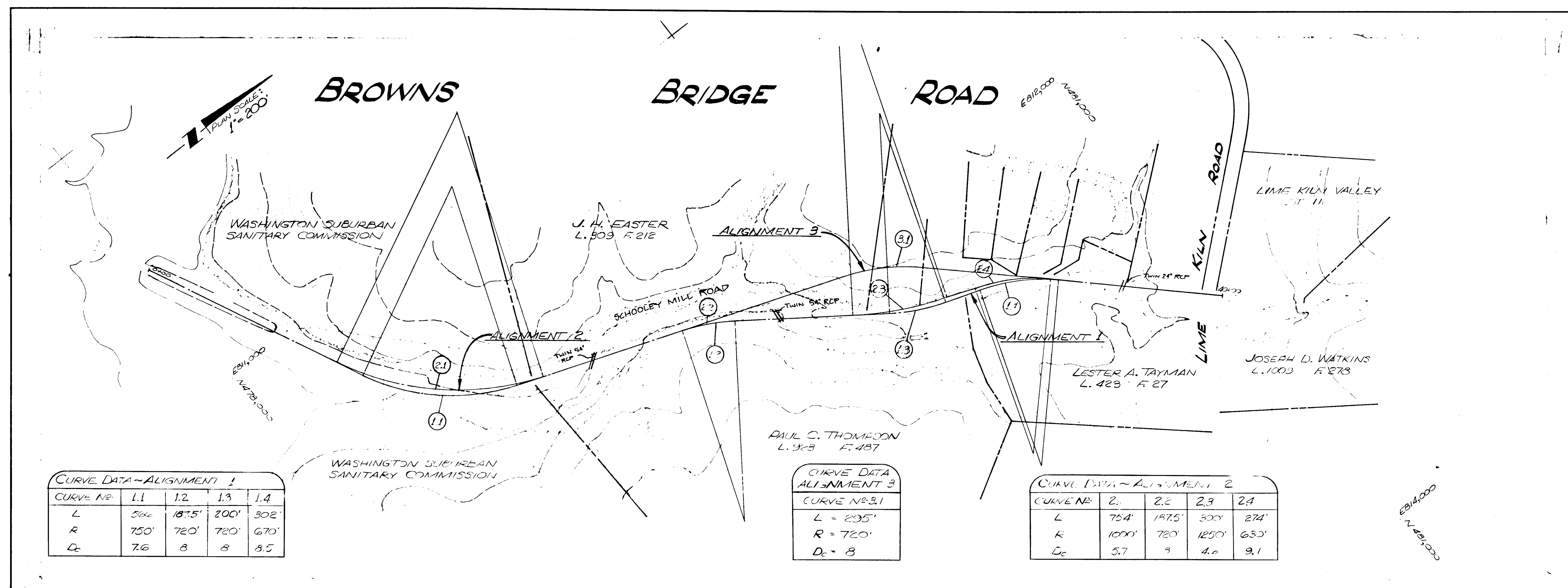


DATE
BY
CHECKED
NOTE BOOK
NO.

DATE
BY
CHECKED
NOTE BOOK
NO.



DEPARTMENT OF PUBLIC WORKS

CHIEF, BUREAU OF ENGINEERING _____ DATE _____

DEPARTMENT OF LAND DEVELOPMENT AND ZONING ADMINISTRATION

CHIEF, DIVISION OF LAND DEVELOPMENT _____ DATE _____

DATE NO. REVISION DESCRIPTION

PROJECT J-4065CC

ENGINEERING STUDY

TWO COUNTY ROADS

HOWARD COUNTY, MD.

OWNER & DEVELOPER

HOWARD COUNTY DEPT. OF PUBLIC WORKS

BUREAU OF ENGINEERING

GEORGE HOWARD OFFICE BUILDING

3430 COURT HOUSE DRIVE ELLICOTT CITY, MARYLAND 21043

AREA

BROWNS BRIDGE ROAD

TITLE

EXHIBIT "D"

PRELIMINARY ROAD ALIGNMENTS

DESIGNED BY: PAB SCALE: 1"=200' PROJECT NO.

DRAWN BY: JDP DATE: APRIL 85 DRAWING NUMBER

CHECKED BY: RHM APPROVED: 1 OF 1

C086D2d1
BROWNS BRIDGE RD 2/21/85