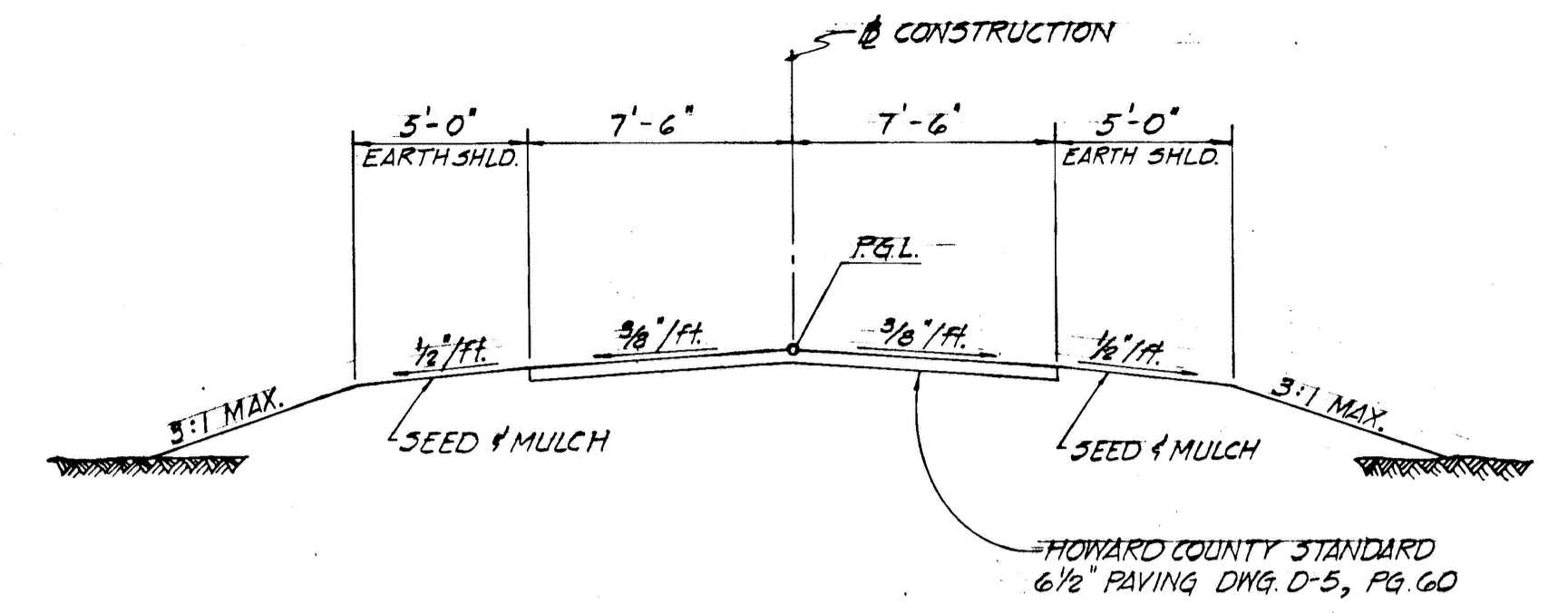
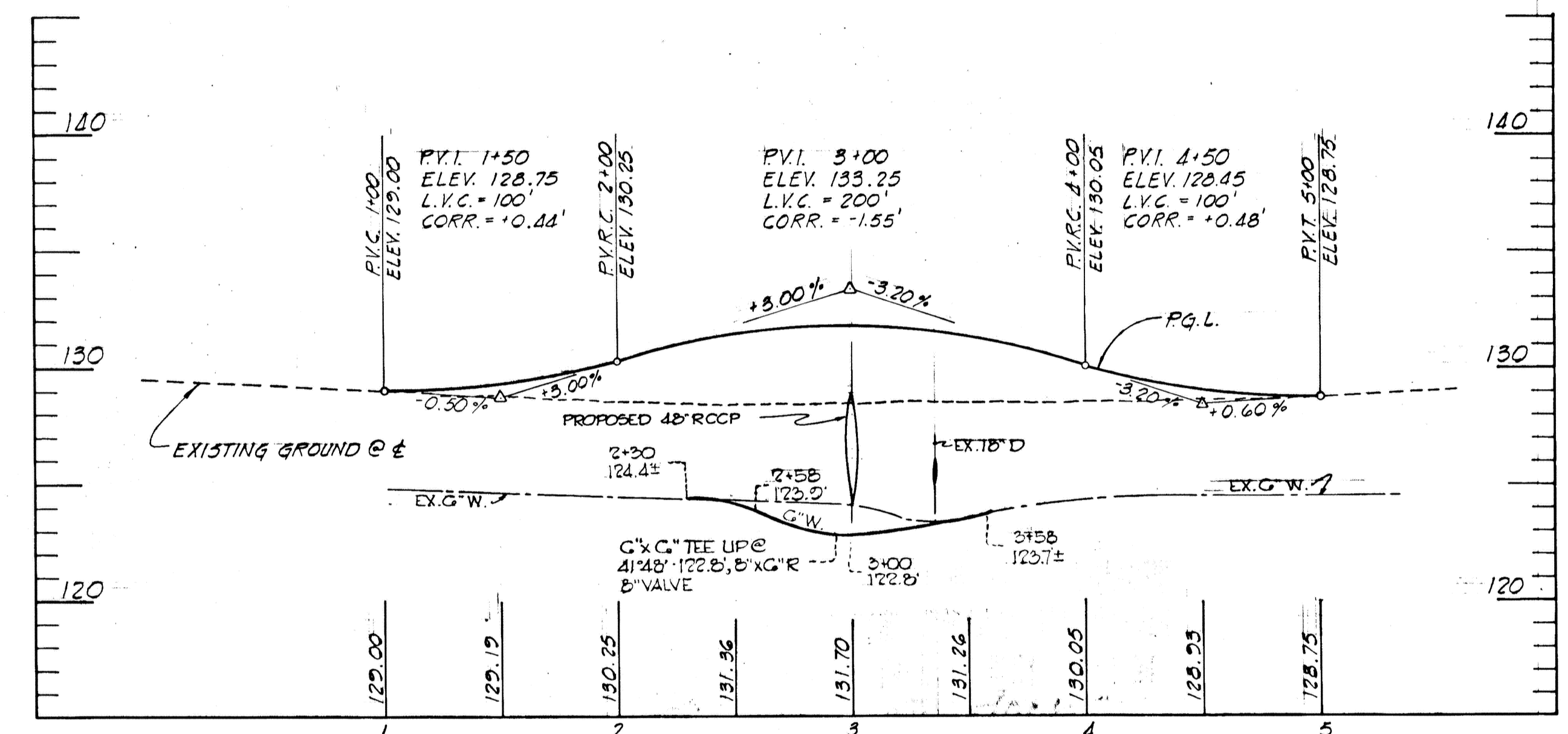


PLAN
SCALE: 1" = 50'



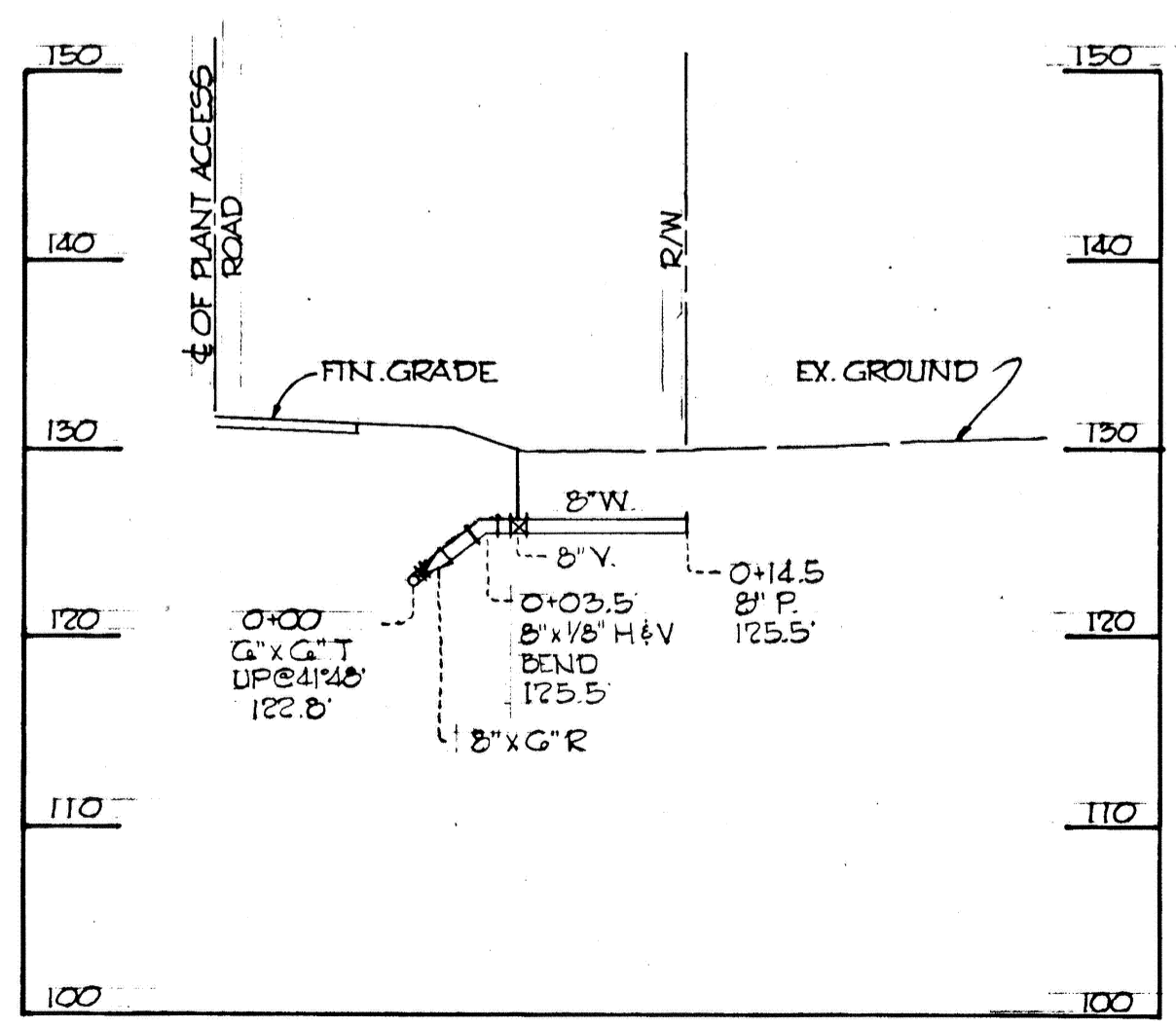
TYPICAL SECTION
NOT TO SCALE



PLANT ACCESS ROAD PROFILE
SCALE: HOR. 1" = 50', VERT. 1" = 5'

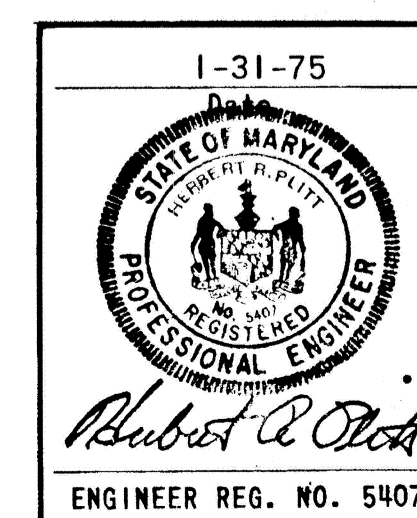
STRUCTURE SCHEDULE						
NO.	TYPE	LOCATION	INV. IN	INV. OUT	TOP ELEV.	REMARKS
I-19	(SPECIAL) DBLE. 'S' COMB.	29+70 - RT.	147.19	146.99	156.34	SEE DWG. NO. 2
MH-9	'C' MANHOLE	*	141.31	141.11	*	SEE DWG. NO. 2
MH-10	'C' MANHOLE	*	125.81	125.61	*	SEE DWG. NO. 2
S-2	'B'-48 HEADWALL	*	124.33	--	*	HO. CO. STD., D-48, PG. 103

* STRUCTURES ARE TO BE LOCATED TO FIT EXISTING SLOPE UNDER THE DIRECTION OF THE ENGINEER IN THE FIELD

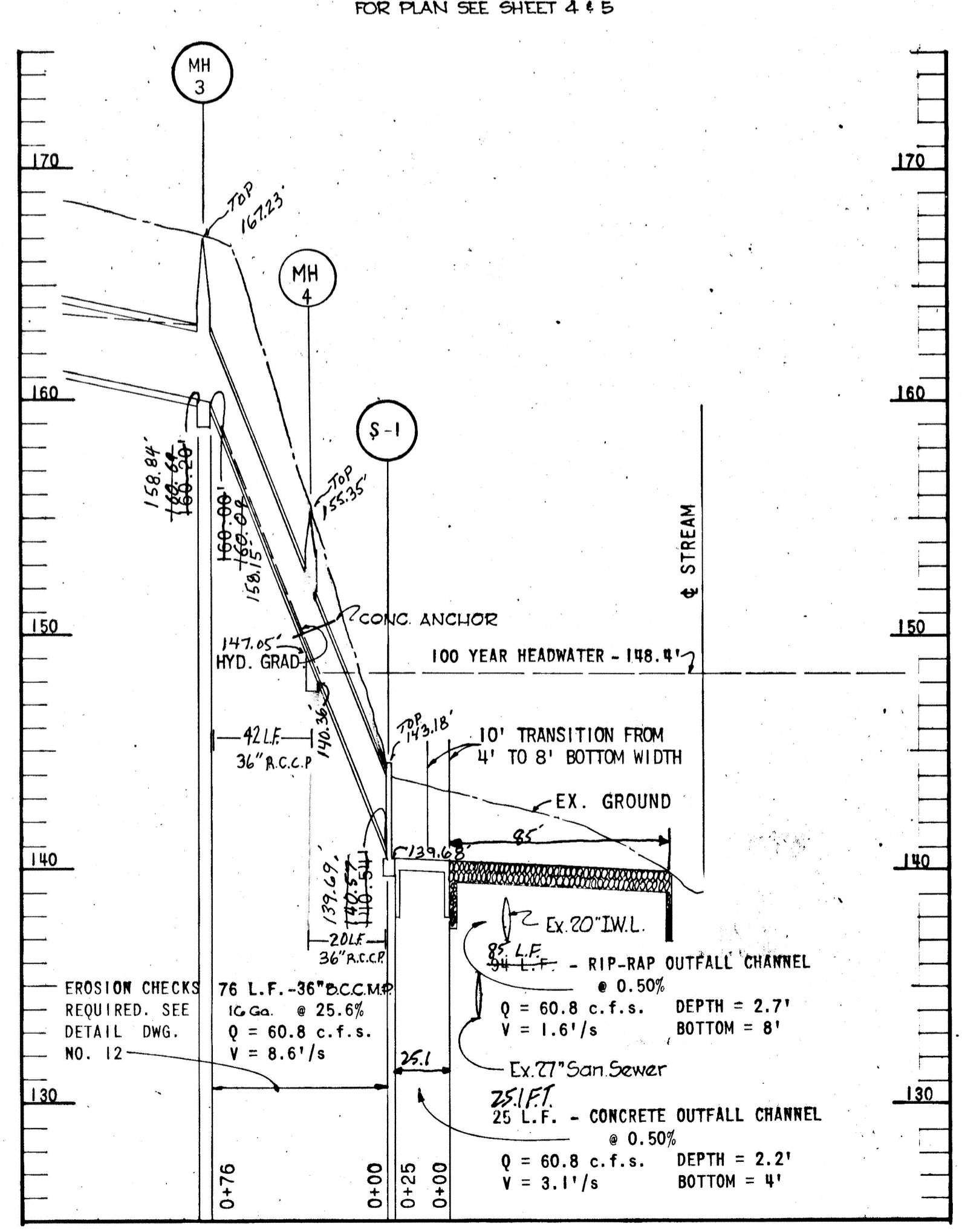
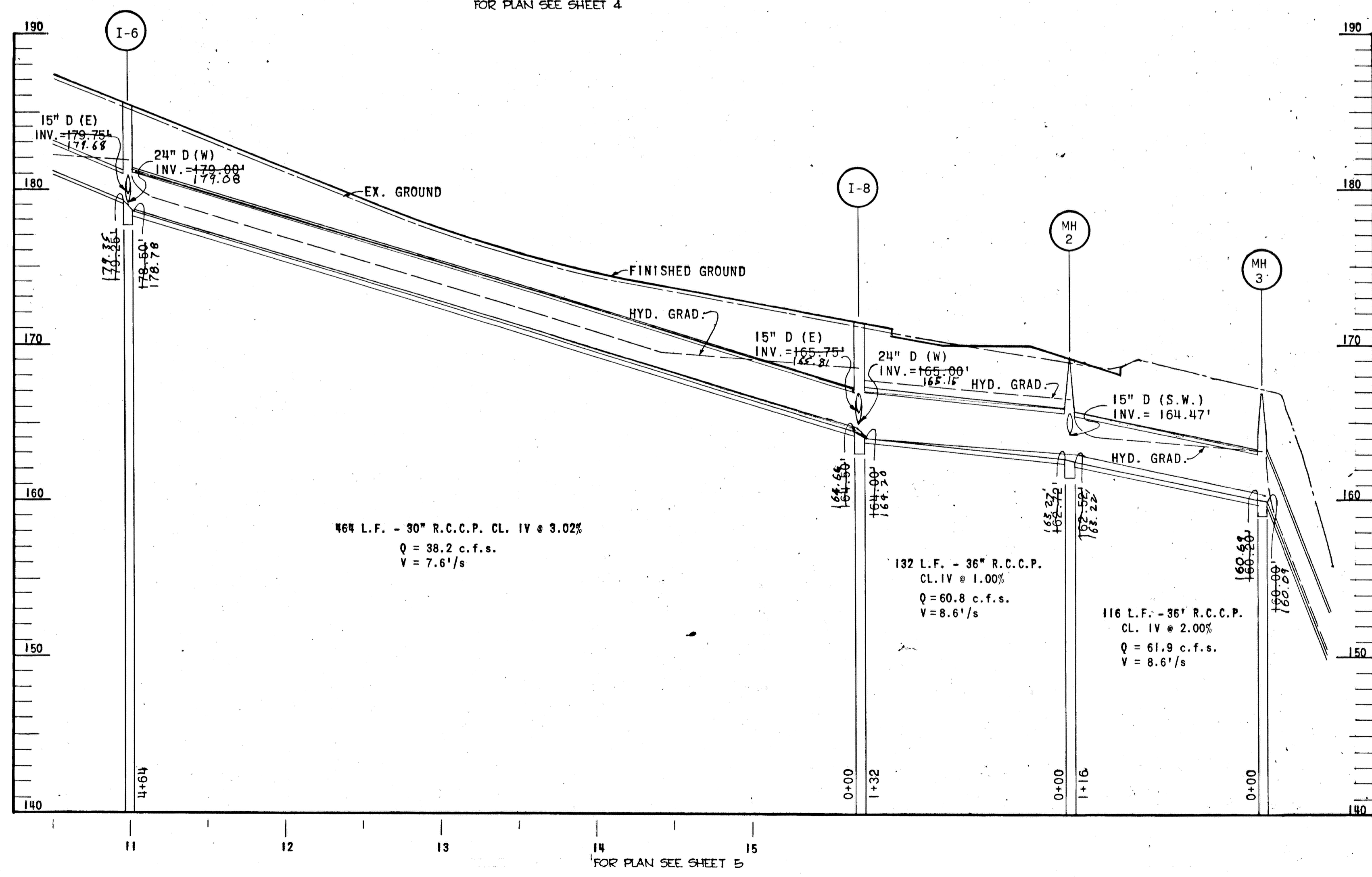
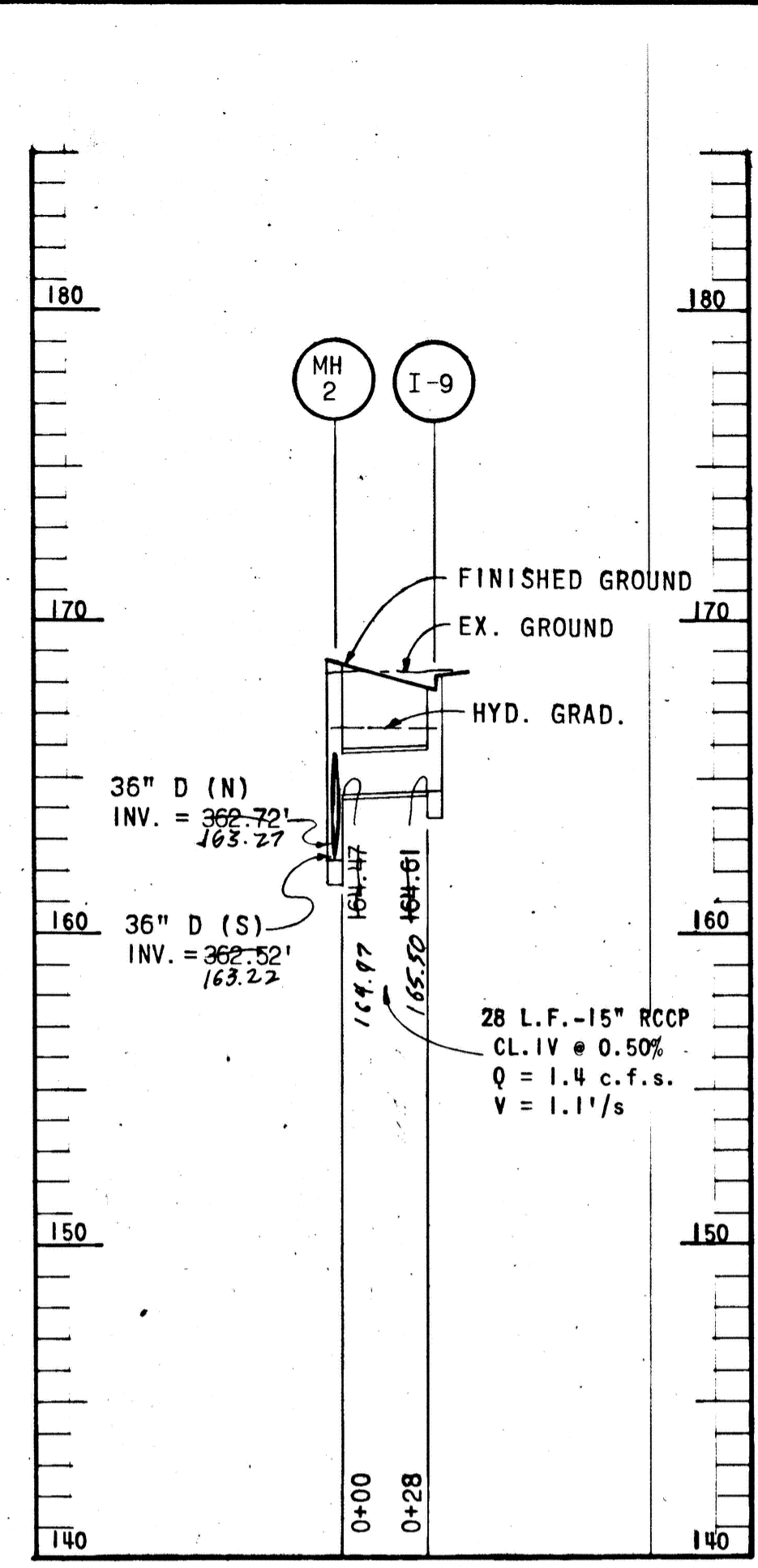
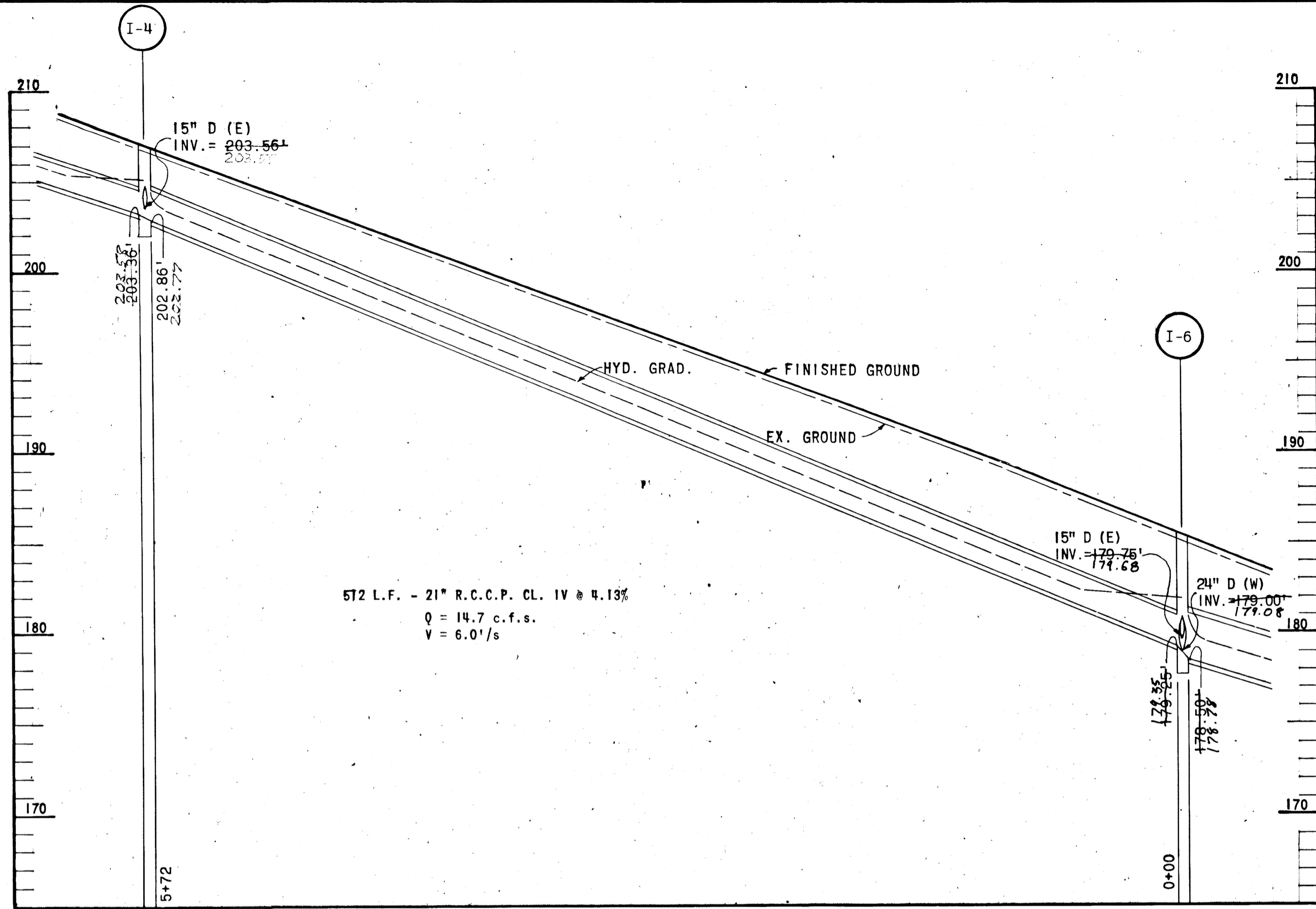
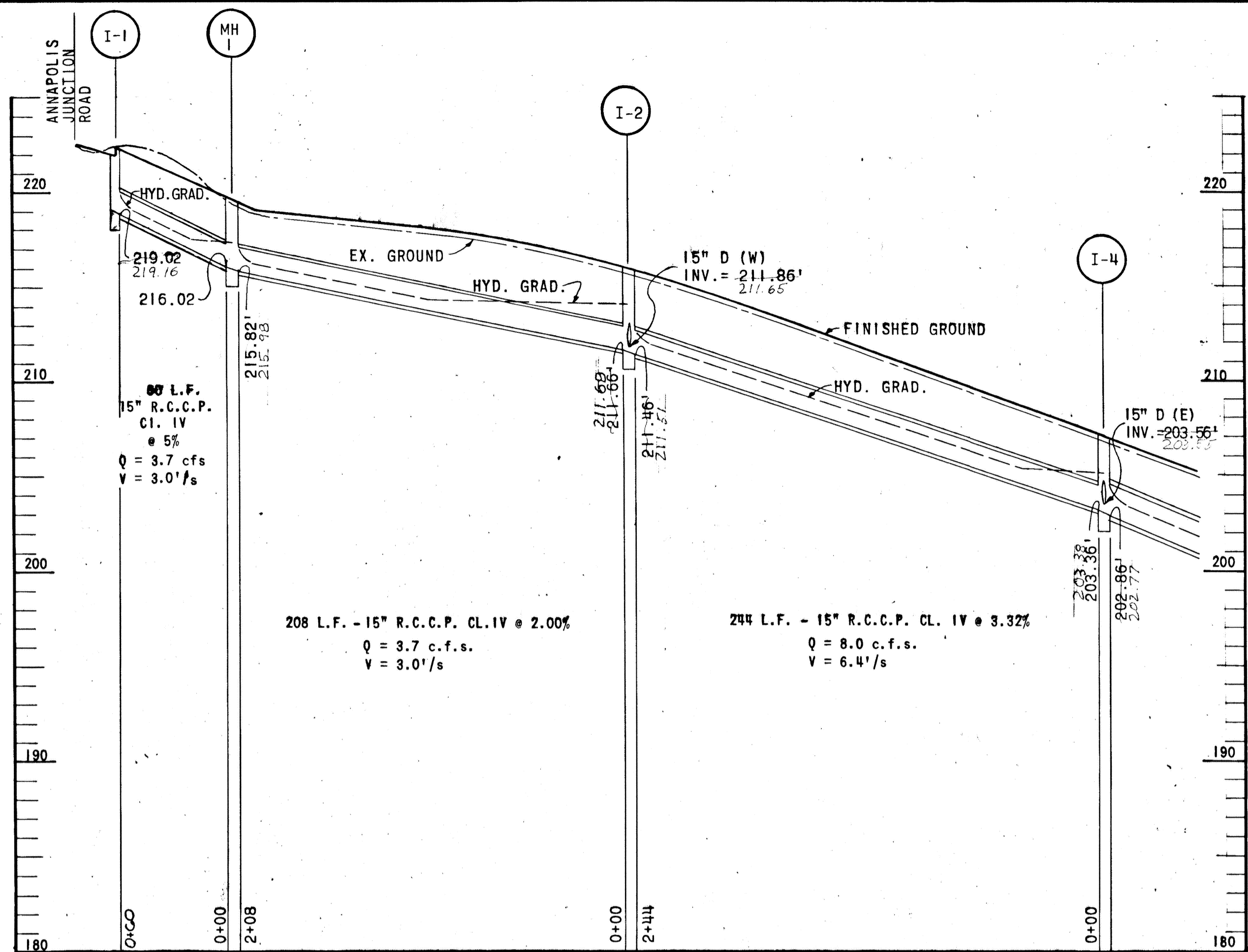


PROFILE OF 8" WATER
SCALE: 1" = 10' HOR., 1" = 10' VERT.

APPROVED
DIVISION OF LAND DEVELOPMENT AND TRANSPORTATION PLANNING
HOWARD COUNTY, MARYLAND
DATE 5/20/75
[Signature]

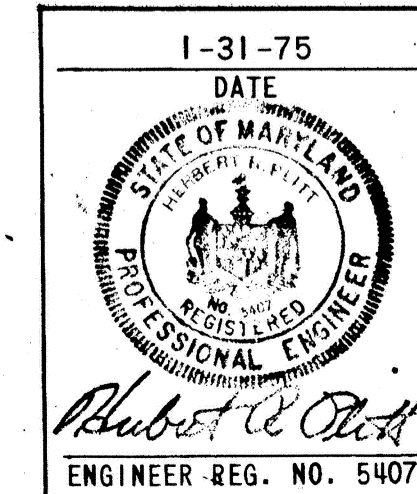


DEPARTMENT OF PUBLIC WORKS	
<i>B. M. McLeod</i> CHIEF, BUREAU OF HIGHWAYS	6/10/75 DATE
OFFICE OF PLANNING AND ZONING	
CHIEF, DIVISION OF LAND DEVELOPMENT AND TRANSPORTATION PLANNING	DATE
CENTURY ENGINEERING, INC. CONSULTING ENGINEERS - PLANNERS TOWSON, MARYLAND 21204	
Rev. Date	Rev. No. Revision Description
CORRIDOR INDUSTRIAL PARK 4 th ELECTION DISTRICT HOWARD PARK	
OWNER AND DEVELOPER COLUMBIA INDUSTRIAL DEVELOPMENT CORPORATION COLUMBIA, MARYLAND	
PROJECT AREA CORRIDOR INDUSTRIAL PARK - SECTION I	
PROJECT TITLE CHANNEL OUTFALL GREENWOOD PLACE	
Des. By J.F.L.	Scale AS SHOWN Dwg. No. 9
Drn. By J.F.L.	Date 1-31-75 C.C.F. No.
Chk. By A.W.R.	Approved
ENGINEER REG. NO. 5407	

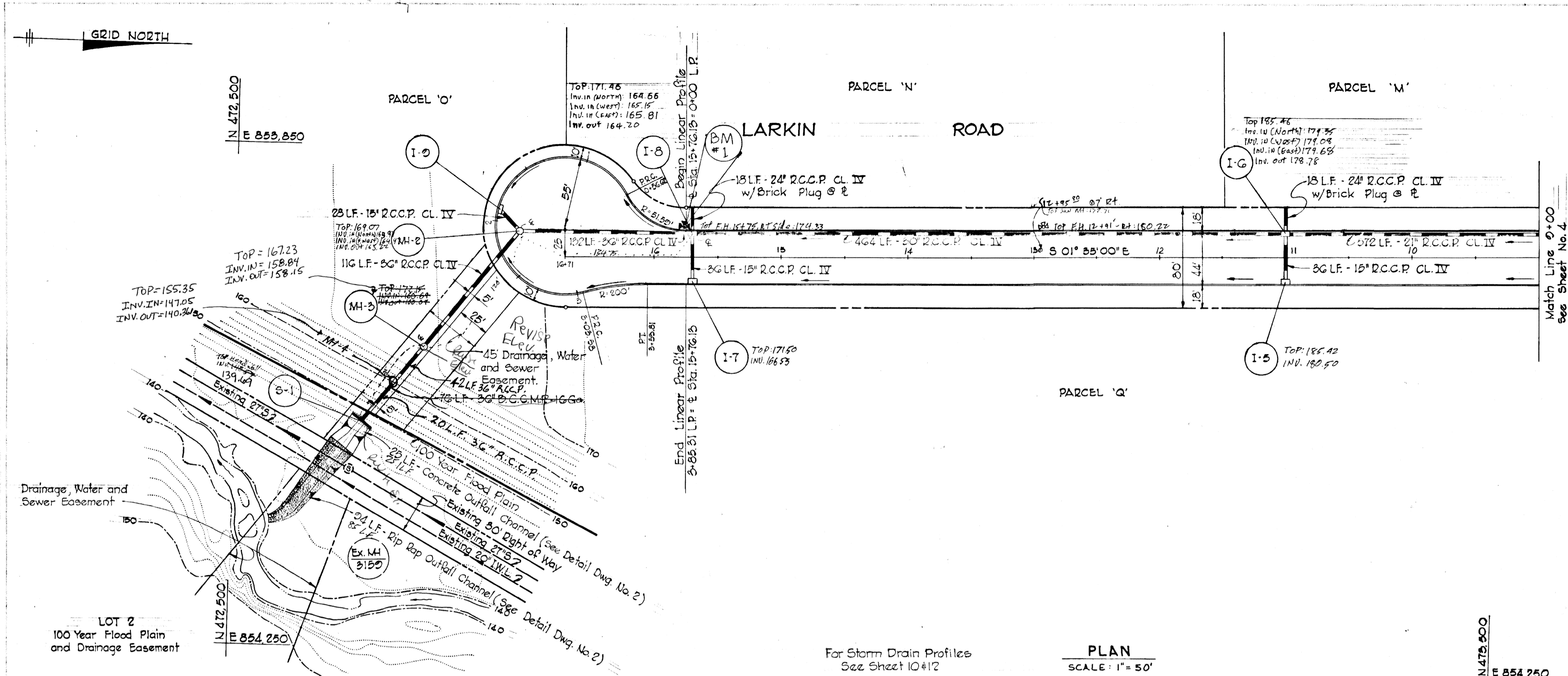


APPROVED
 DIVISION OF LAND DEVELOPMENT
 AND TRANSPORTATION PLANNING
 HOWARD COUNTY, MARYLAND
 DATE 5/20/75
[Signature]

DEPARTMENT OF PUBLIC WORKS		
<i>S. M. McKeand</i> 6/10/75		DATE
CHIEF, BUREAU OF HIGHWAYS		
OFFICE OF PLANNING AND ZONING		
CHIEF, DIVISION OF LAND DEVELOPMENT AND TRANSPORTATION PLANNING		DATE
CENTURY ENGINEERING INC. CONSULTING ENGINEERS PLANNERS TOWSON, MARYLAND 21204		
Rev. Date	Rev. No.	Revision Description
CORRIDOR INDUSTRIAL PARK 6 th ELECTION DISTRICT HOWARD COUNTY OWNER AND DEVELOPER COLUMBIA INDUSTRIAL DEVELOPMENT CORPORATION COLUMBIA, MARYLAND		
PROJECT AREA CORRIDOR INDUSTRIAL PARK - SECTION I		
PROJECT TITLE STORM DRAIN PROFILES		
Des. By	A. W. R.	Scale 1" = 5' VERT. 1" = 50' HORIZ.
Drn. By	A. W. R.	Date 1-31-75
Chk. By	F. T.	Approved
Dwg. No. 10 C.C.F. No.		



FOR PLAN SEE SHEET 5
 AS BUILT 9/19/2007
 AS BUILT 2/19/81 J.R.C.



STRUCTURE SCHEDULE						
NO.	TYPE	LOCATION	INV. IN	INV. OUT	TOP ELEV.	REMARKS
I-5	DBLE. 'S' COMB.	11+00 - LT.	--	180.47	185.46	HO. CO. STD., D-99, PG. 154
I-6	DBLE. 'S' COMB.	11+00 - RT.	179.25	178.50	185.46	HO. CO. STD., D-99, PG. 154
I-7	DBLE. 'S' COMB.	15+70 - LT.	--	166.47	171.50	HO. CO. STD., D-99, PG. 154
I-8	DBLE. 'S' COMB.	15+70 - RT.	164.50	164.00	171.50	HO. CO. STD., D-99, PG. 154
I-9	DBLE. 'S' COMB.	1+92.57 - LINEAR PROF.	--	169.61	168.36	USE 12" WALLS
MH-2	STD. MANHOLE	2+08 - 19' LT. LINEAR PROF.	162.72	162.52	168.46	HO. CO. STD., D-103, PG. 158
MH-3	STD. MANHOLE	*	160.20	160.00	*	HO. CO. STD., D-103, PG. 158
S-1	'C' ENDWALL	*	140.54	--	*	HO. CO. STD., D-52, PG. 107

* STRUCTURES ARE TO BE LOCATED TO FIT EXISTING SLOPE UNDER THE DIRECTION OF THE ENGINEER IN THE FIELD.

APPROVED
 DIVISION OF LAND DEVELOPMENT AND TRANSPORTATION PLANNING
 HOWARD COUNTY, MARYLAND
 DATE 5/20/75
[Signature]

DEPARTMENT OF PUBLIC WORKS
[Signature] 6/10/75
 CHIEF, BUREAU OF HIGHWAYS DATE

OFFICE OF PLANNING AND ZONING
 CHIEF, DIVISION OF LAND DEVELOPMENT AND TRANSPORTATION PLANNING DATE

CENTURY ENGINEERING, INC.
 CONSULTING ENGINEERS PLANNERS
 TOWSON, MARYLAND 21204

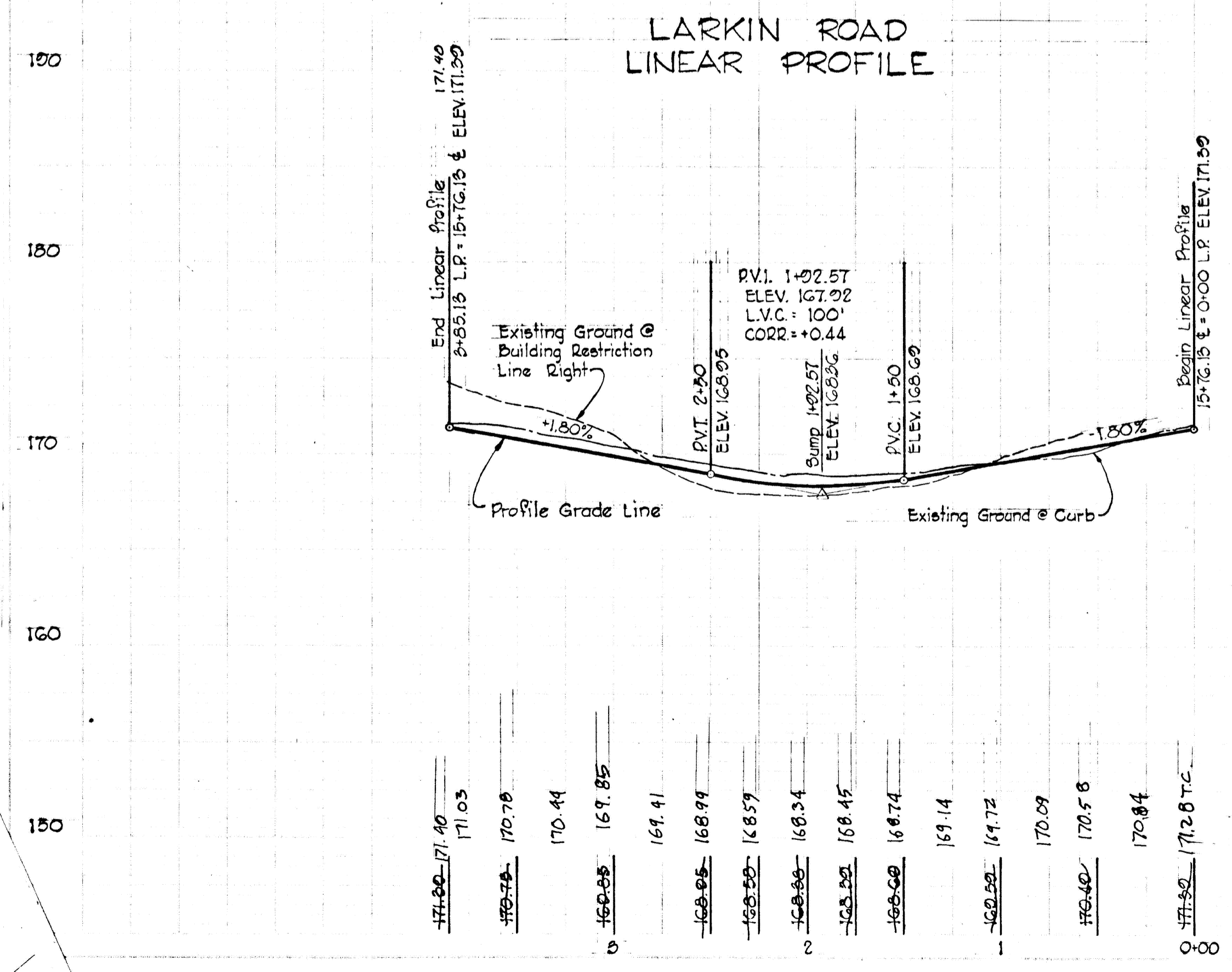
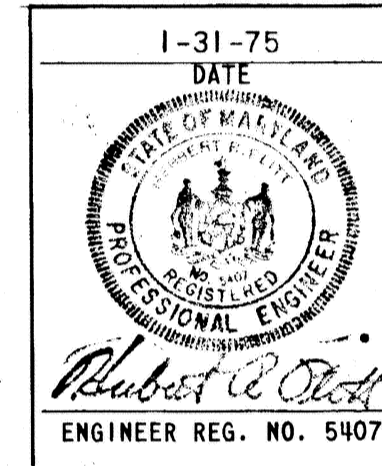
Rev. Date	Rev. No.	Revision Description

CORRIDOR INDUSTRIAL PARK
 4th ELECTION DISTRICT HOWARD COUNTY
 OWNER AND DEVELOPER
 COLUMBIA INDUSTRIAL DEVELOPMENT CORPORATION
 COLUMBIA, MARYLAND

PROJECT AREA
 CORRIDOR INDUSTRIAL PARK - SECTION I

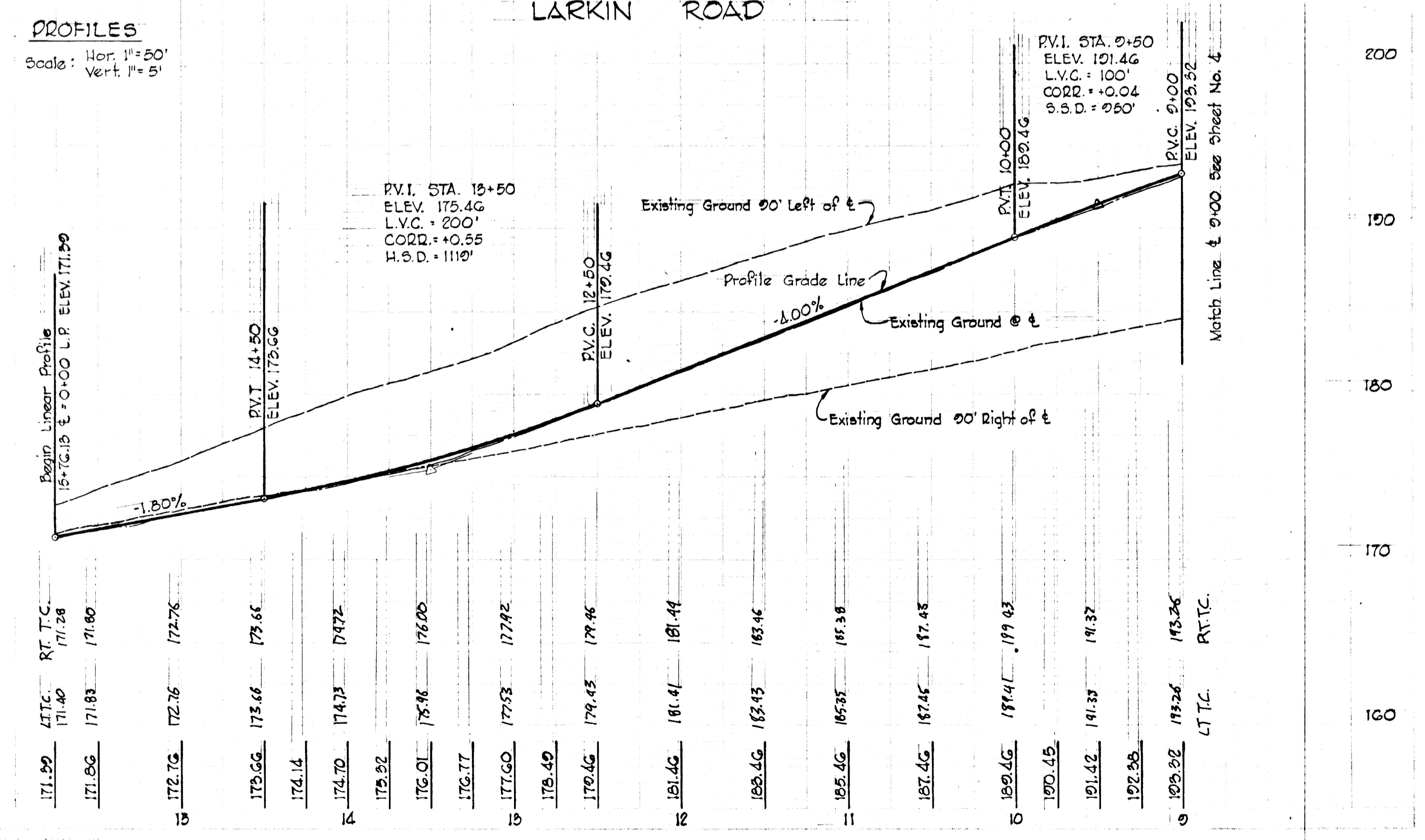
PROJECT TITLE
 PLAN AND PROFILE
 LARKIN ROAD

Des. By: F. T. Scale: AS SHOWN Dep. No. 5
 Dwn. By: L. J. D. Date: 1-31-75 C.C.F. No.
 Chk. By: F. T. Approved

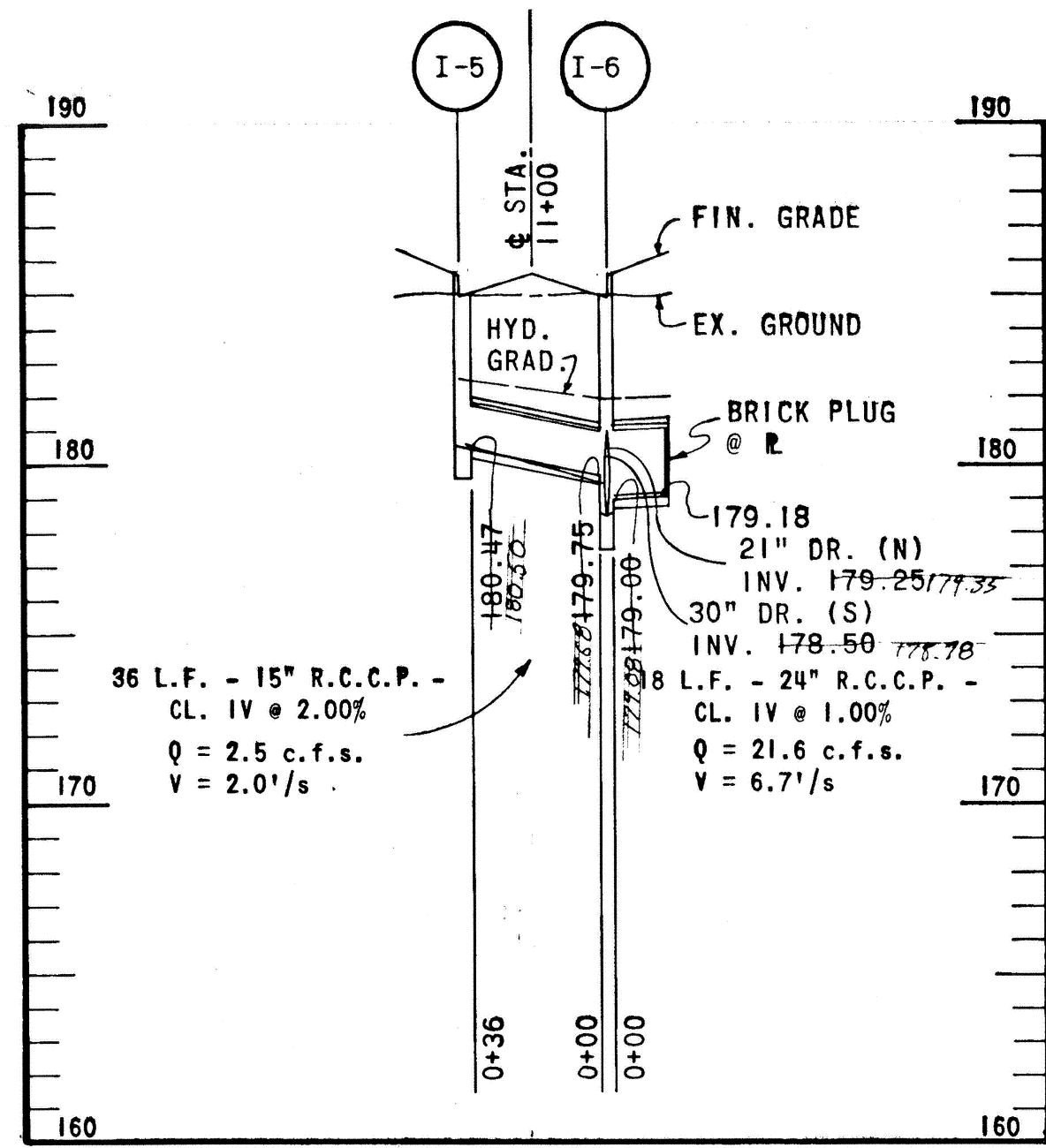


For Storm Drain Profiles See Sheet 10#12

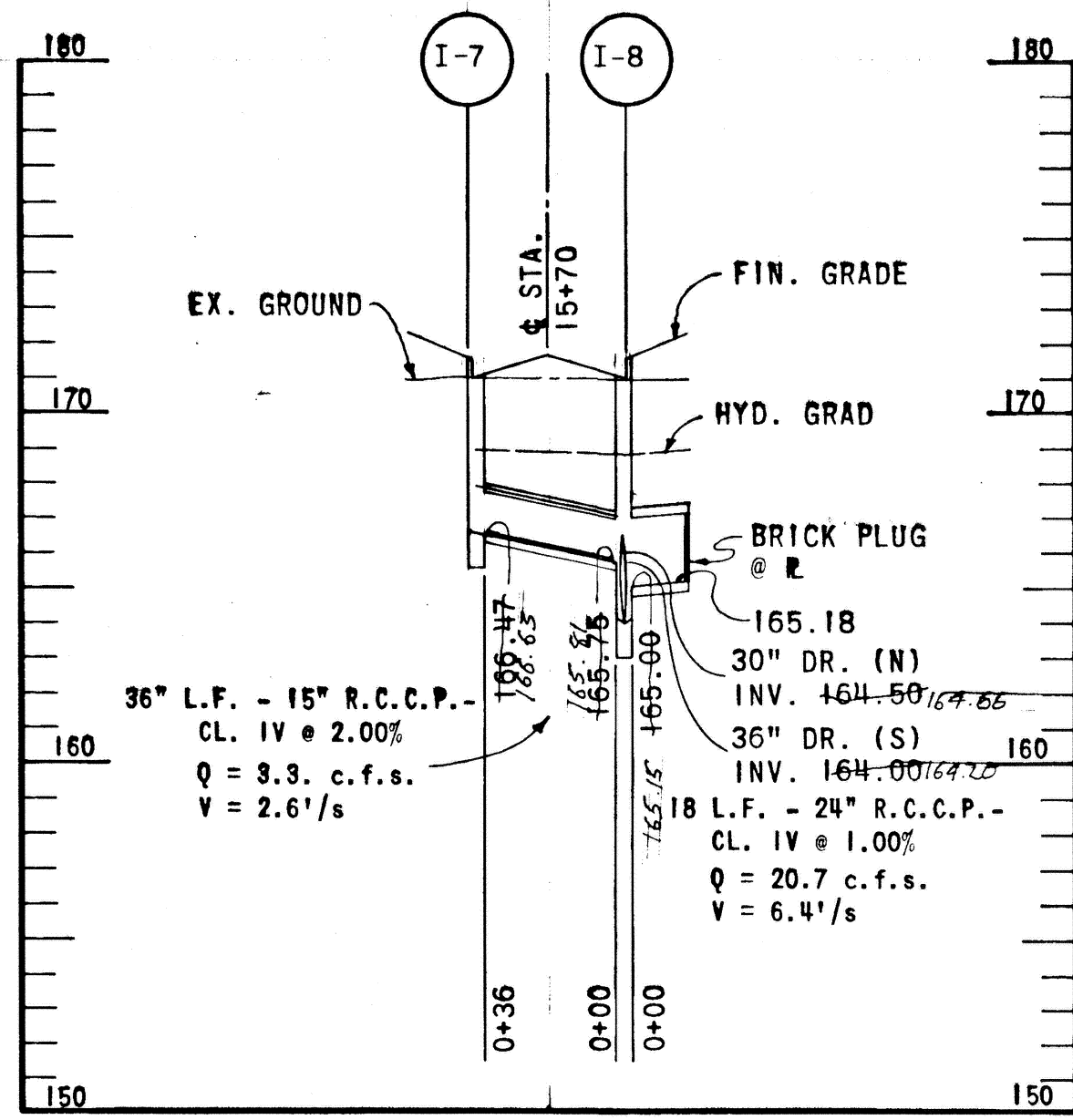
PLAN SCALE: 1" = 50'



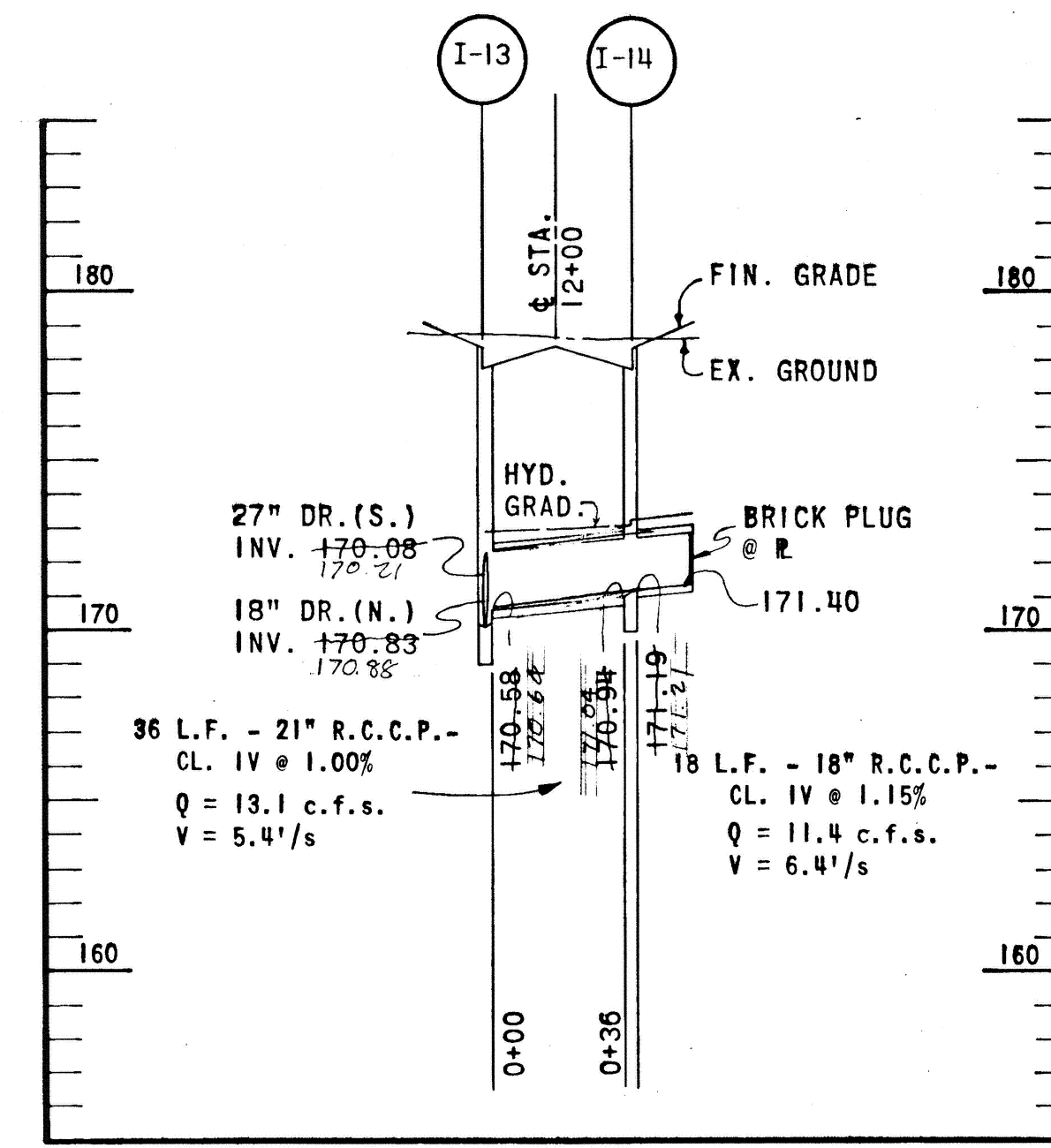
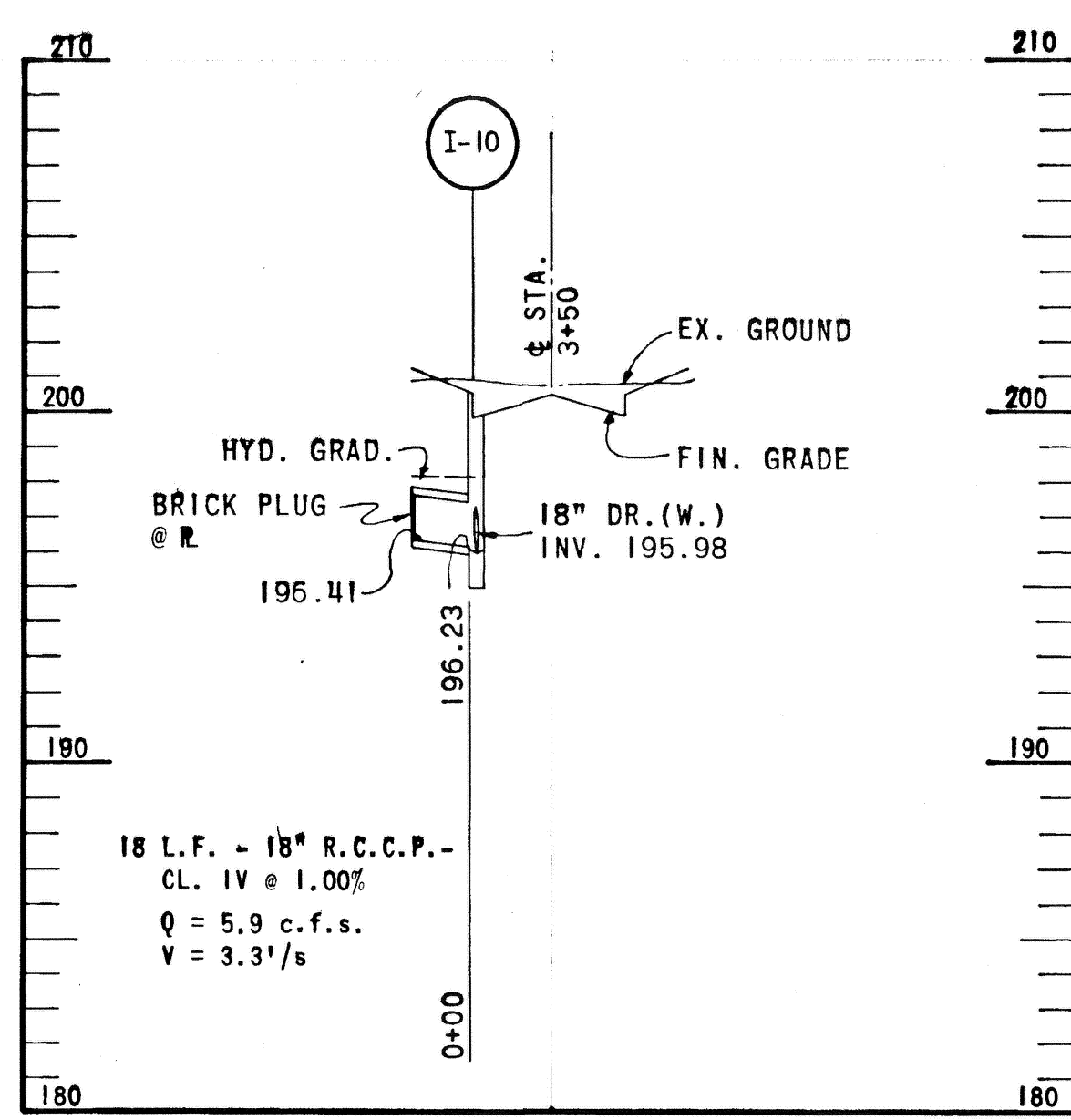
AS BUILT 2/18/81 J.K.C.
 AS BUILT 9/18/2007 F-75-57



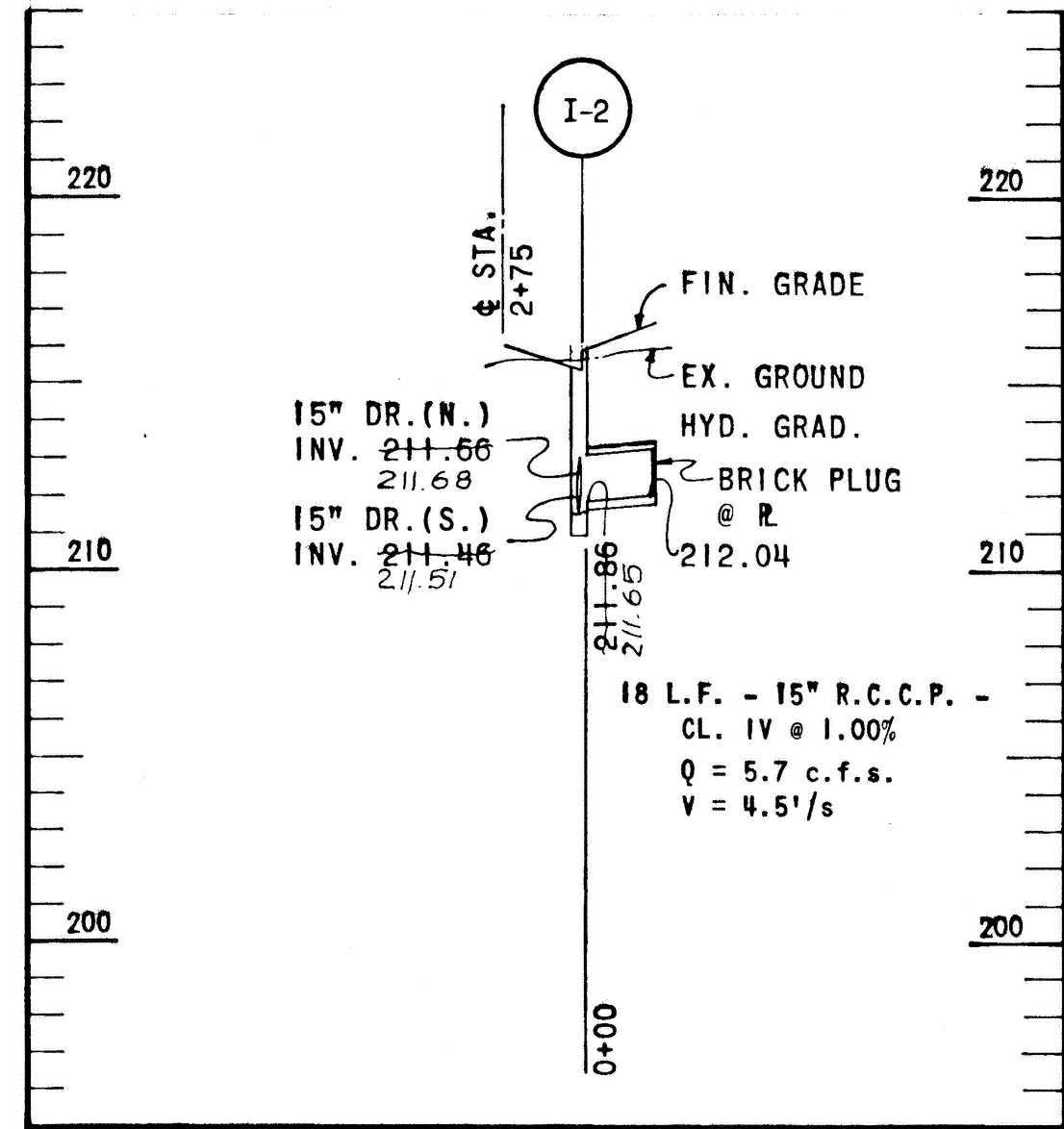
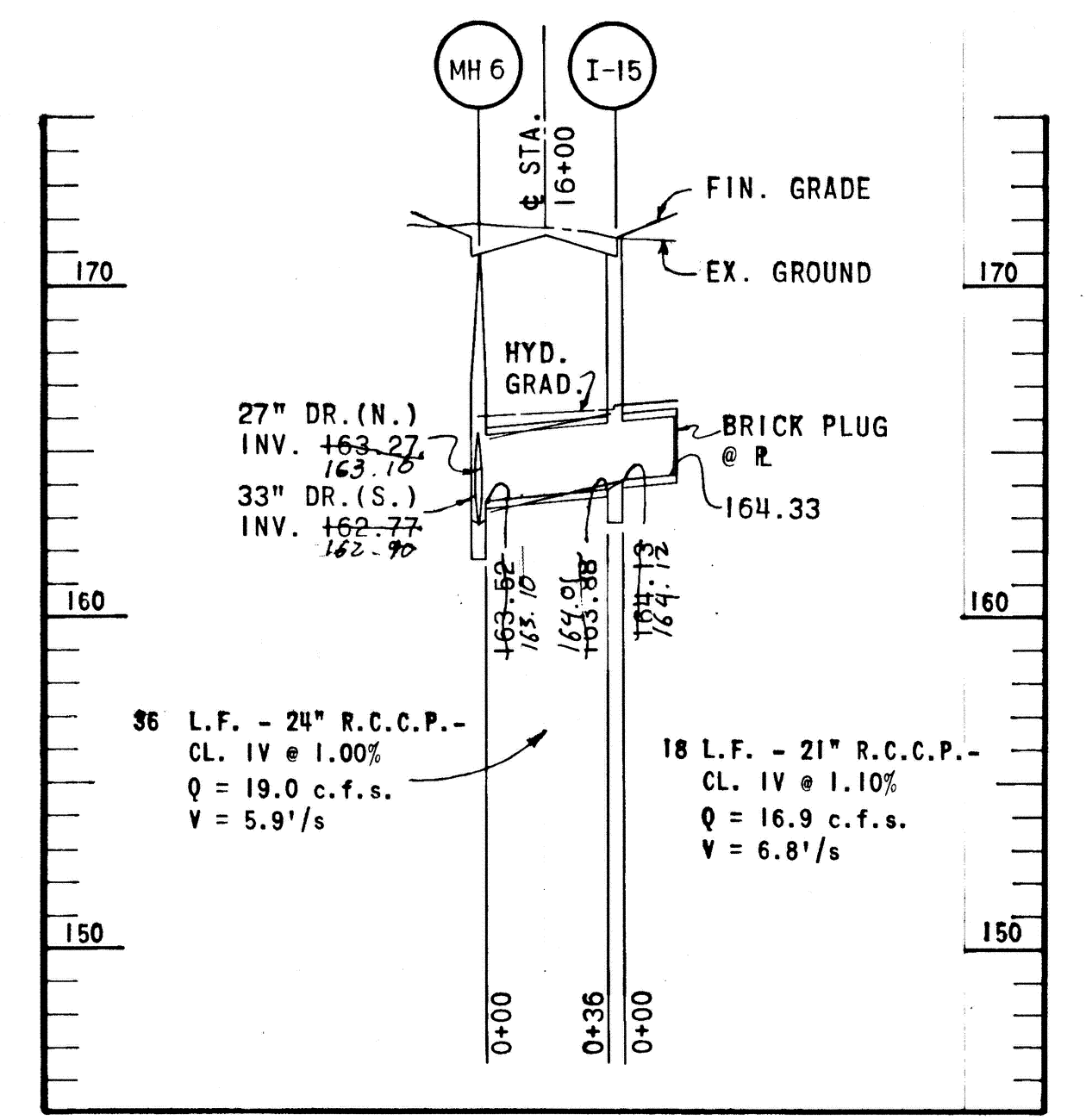
FOR PLAN SEE SHEET 5



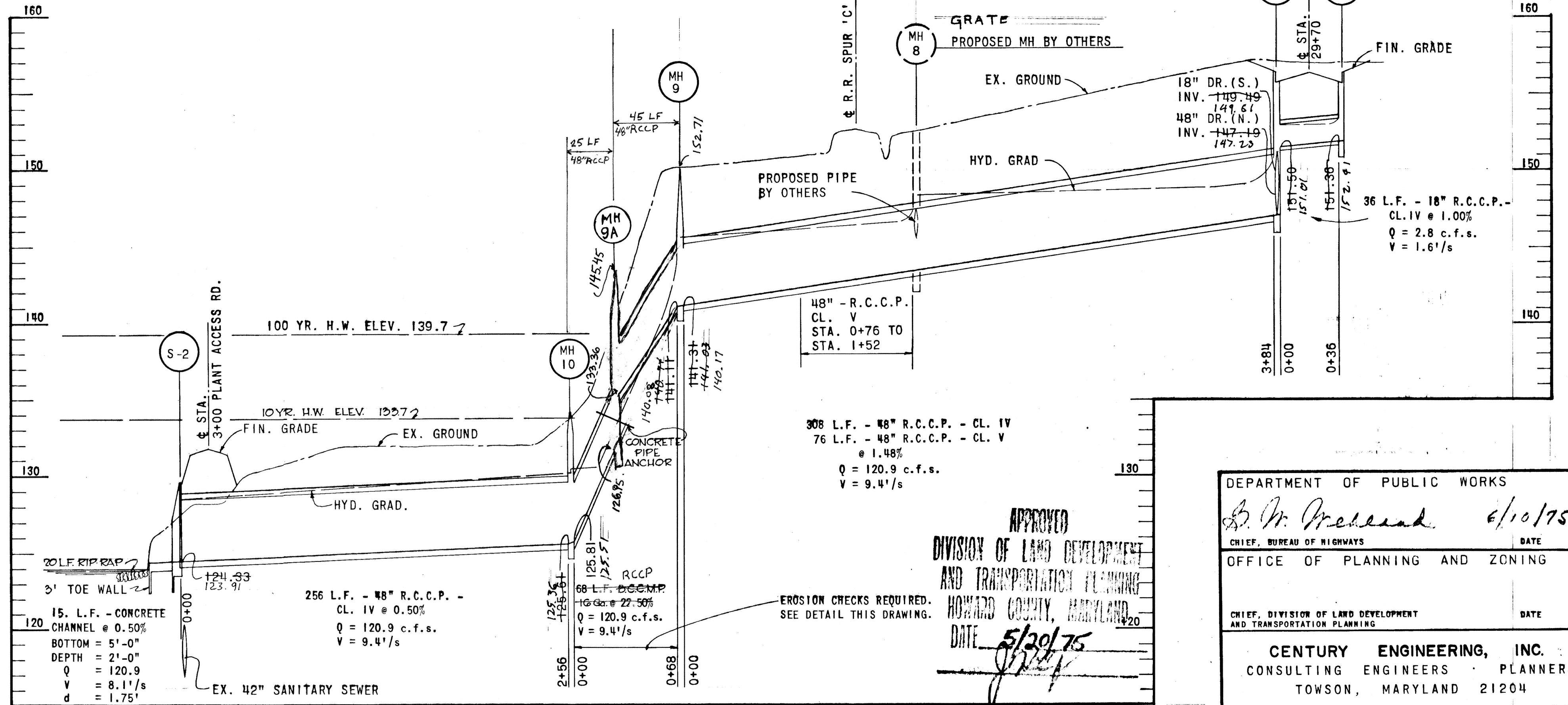
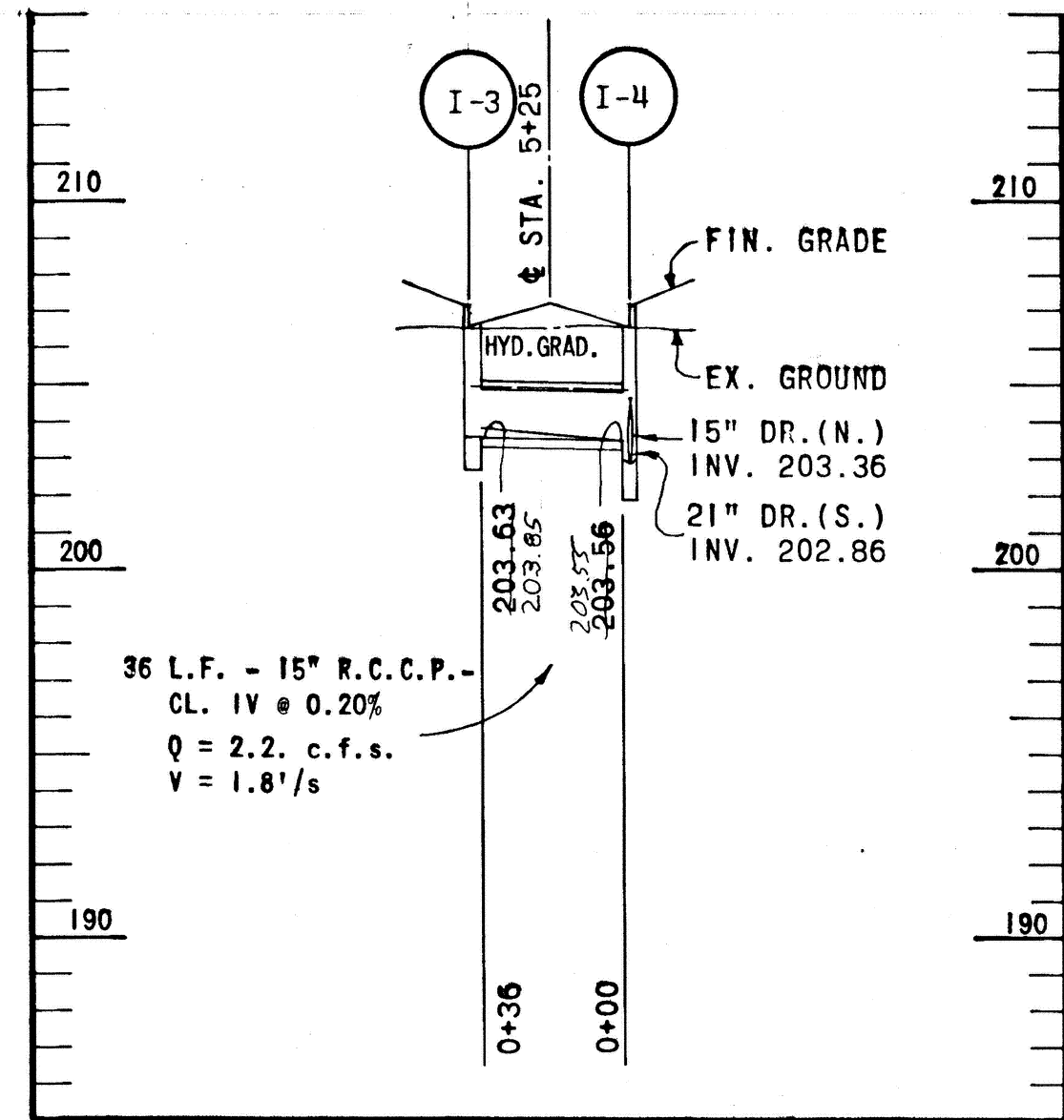
FOR PLAN SEE SHEET 6



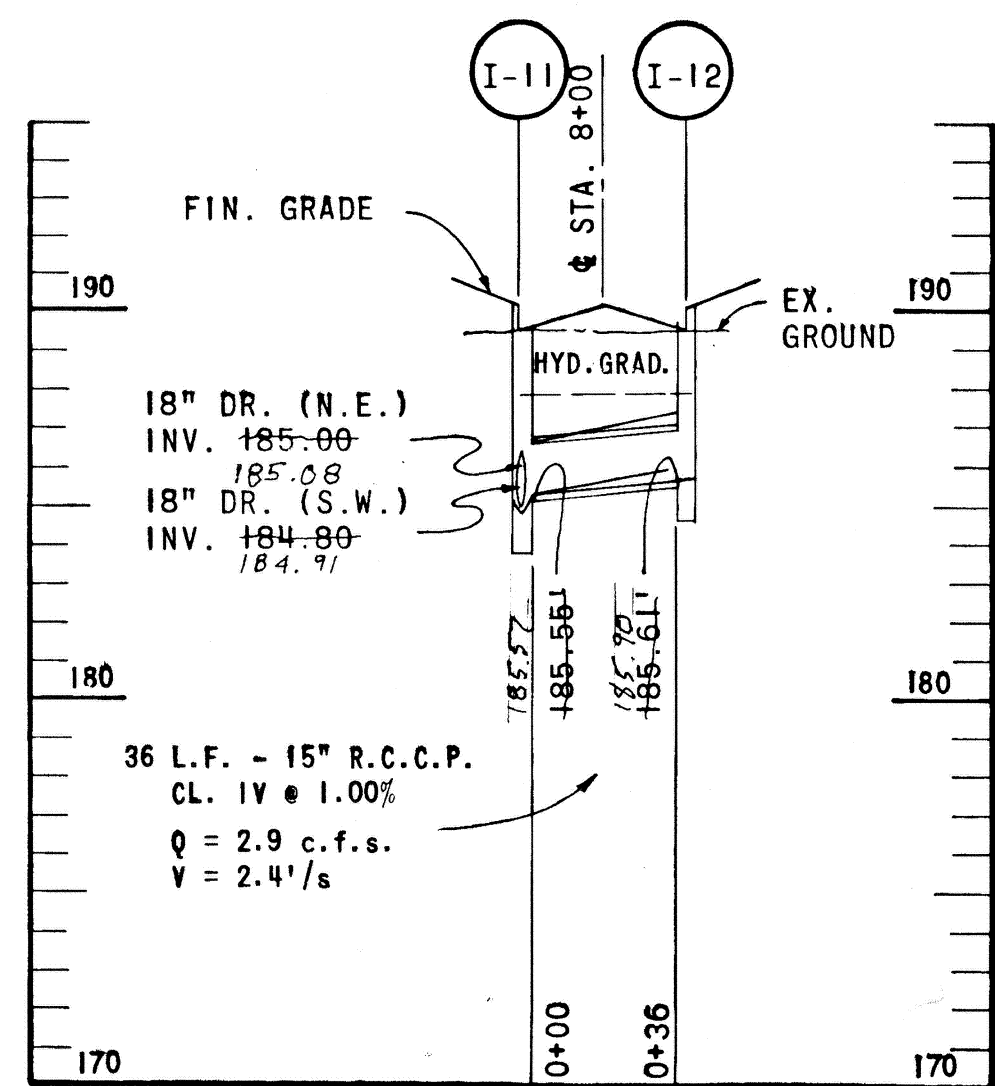
FOR PLAN SEE SHEET 7



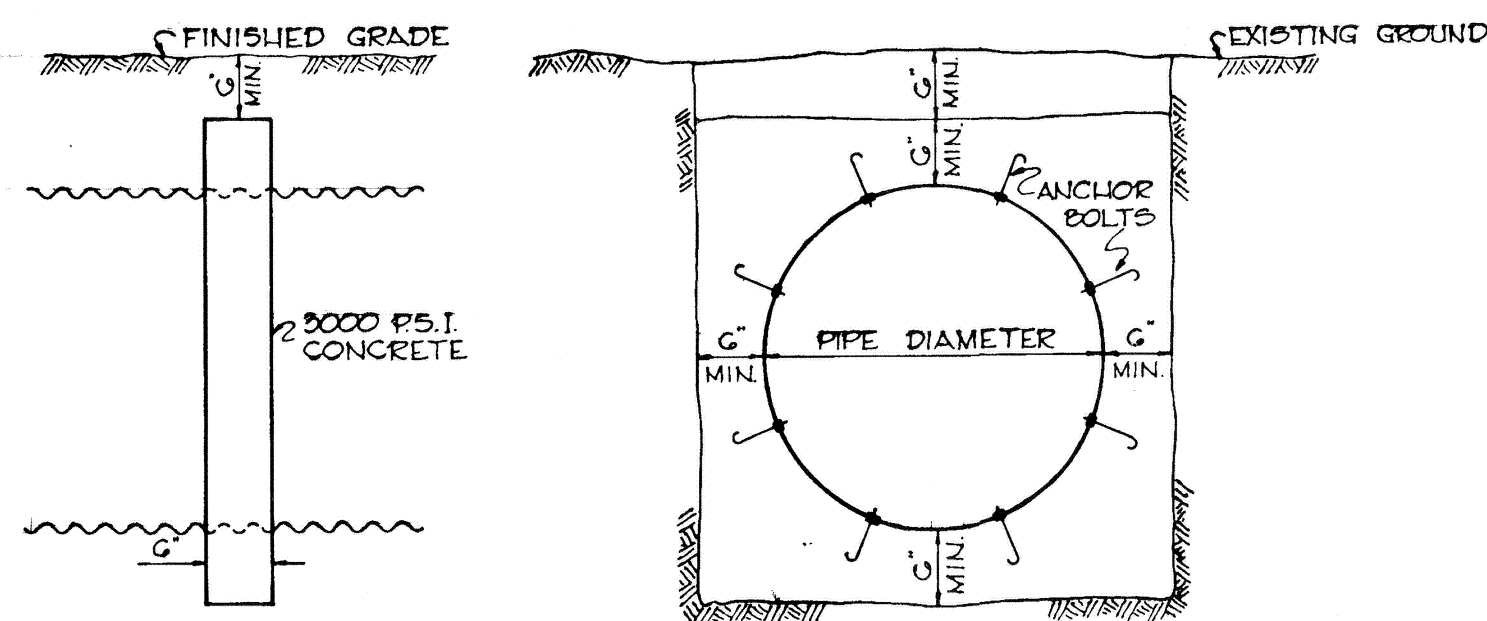
FOR PLAN SEE SHEET 4



FOR PLAN SEE SHEET 8 & 9

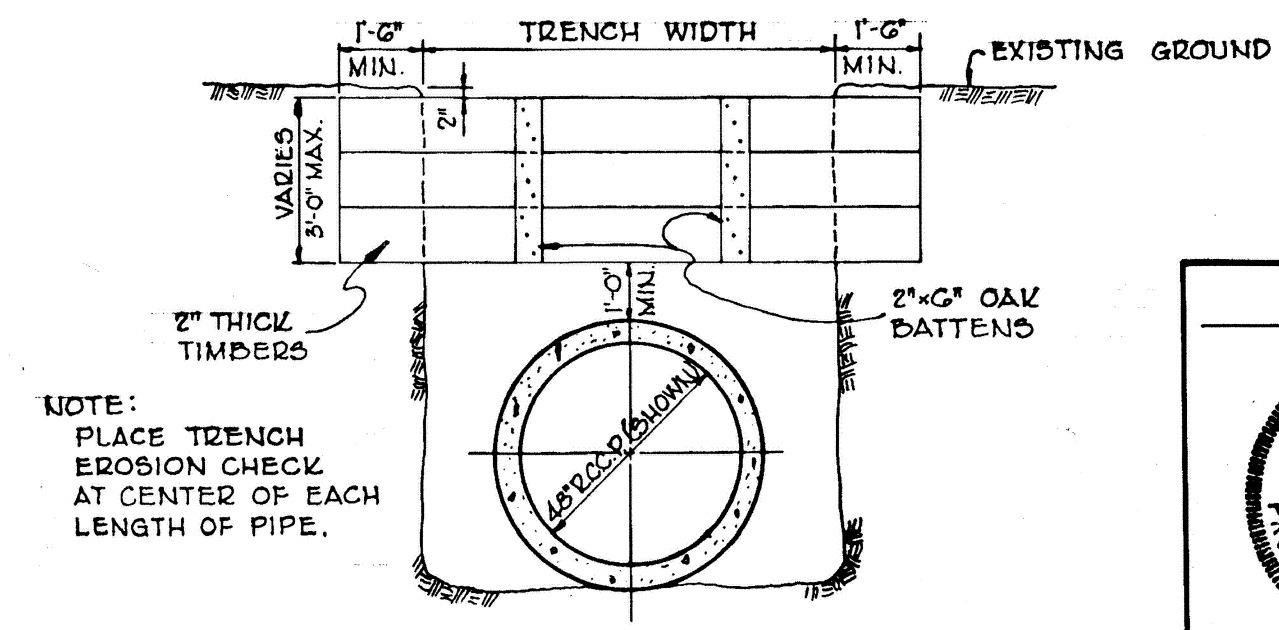


FOR PLAN SEE SHEET 6



PIPE ANCHOR DETAIL

NO SCALE



TRENCH EROSION CHECK DETAIL

NO SCALE

APPROVED
 DIVISION OF LAND DEVELOPMENT
 AND TRANSPORTATION PLANNING
 HOWARD COUNTY, MARYLAND
 DATE 5/30/75
 [Signature]

DEPARTMENT OF PUBLIC WORKS
 B. M. [Signature] 6/10/75
 CHIEF, BUREAU OF HIGHWAYS DATE
 OFFICE OF PLANNING AND ZONING
 CHIEF, DIVISION OF LAND DEVELOPMENT AND TRANSPORTATION PLANNING DATE

CENTURY ENGINEERING, INC.
 CONSULTING ENGINEERS PLANNERS
 TOWSON, MARYLAND 21204

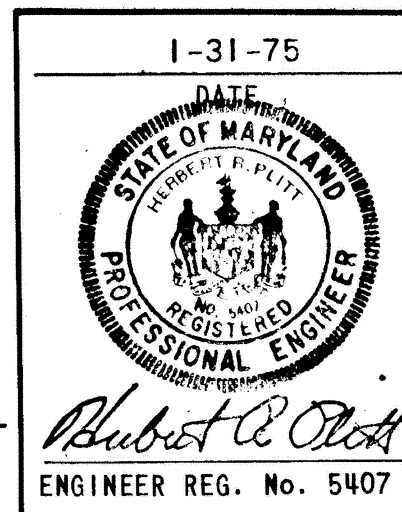
Rev. Date Rev. No. Revision Description

CORRIDOR INDUSTRIAL PARK
 6th ELECTION DISTRICT HOWARD COUNTY
 OWNER AND DEVELOPER
 COLUMBIA INDUSTRIAL DEVELOPMENT CORPORATION
 COLUMBIA, MARYLAND

PROJECT AREA
 CORRIDOR INDUSTRIAL PARK - SECTION I

PROJECT TITLE
 STORM DRAIN PROFILES

Des. By F.T. Scale 1" = 5' VERT. 1" = 50' HOR. Dwg. No. 12
 Drn. By F.T. Date 1-31-75 C.C.F. No.
 Chk. By A.W.R. Approved



AS BUILT 2/19/81 J.R.C. / AS BUILT 9/18/07

F-75-57